

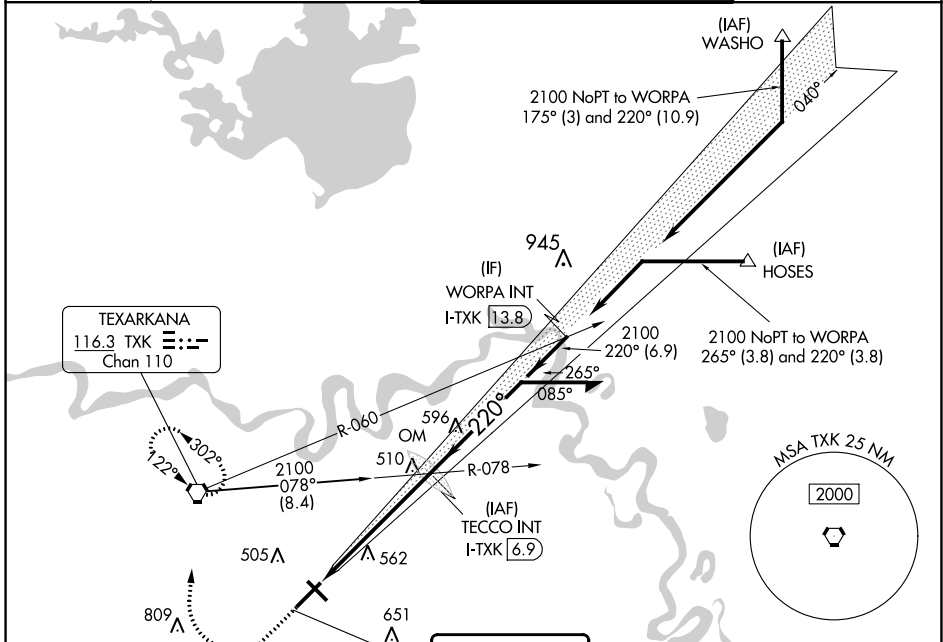
LOC/DME I-TXK <b>111.9</b> Chan <b>56</b>	APP CRS <b>220°</b>	Rwy Idg <b>6602</b> TDZE <b>384</b> Apt Elev <b>390</b>
---	------------------------	---

# ILS or LOC RWY 22

TEXARKANA RGNL-WEBB FLD (TXK)

<p>For inop ALS, increase S-LOC 22 Cats C/D visibility to 1 SM.</p>	<p>MALSR</p>	<p>MISSED APPROACH: Climb to 900 then climbing right turn to 2000 direct TXK VORTAC and hold, continue climb-in-hold to 2000.</p>
---	--------------	---

ATIS <b>120.2</b>	FORT WORTH CENTER <b>123.925 269.475</b>	TEXARKANA TOWER* <b>123.875 (CTAF) 0 235.625</b>	GND CON <b>119.225</b>
----------------------	---	---	---------------------------



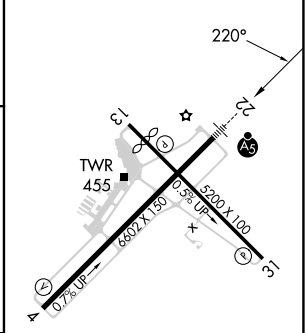
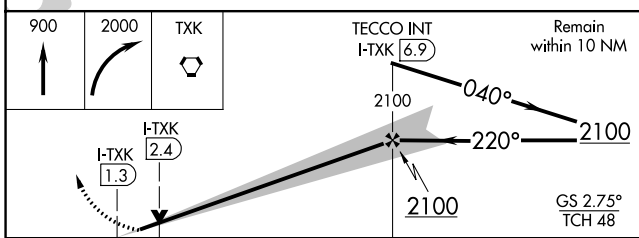
SC-1, 22 FEB 2024 to 21 MAR 2024

SC-1, 22 FEB 2024 to 21 MAR 2024

TEXARKANA  
116.3 TXK  
Chan 110

LOCALIZER 111.9  
I-TXK  
Chan 56

ELEV 390	TDZE 384
----------	----------



CATEGORY	A	B	C	D
S-ILS 22	584-1/2		200 (200-1/2)	
S-LOC 22	760-1/2	376 (400-1/2)	760-5/8	376 (400-5/8)
CIRCLING	820-1 430 (500-1)	900-1 510 (600-1)	1000-1 3/4 610 (700-1 3/4)	1080-2 1/4 690 (700-2 1/4)

MIRL Rwy 13-31					
HIRL Rwy 4-22					
FAF to MAP 5.6 NM					
Knots	60	90	120	150	180
Min:Sec	5:36	3:44	2:48	2:14	1:52

WAAS Ch <b>87099</b> <b>W13A</b>	APP CRS <b>130°</b>	Rwy Idg <b>4559</b> TDZE <b>388</b> Apt Elev <b>390</b>
--	------------------------	---

# RNAV (GPS) RWY 13

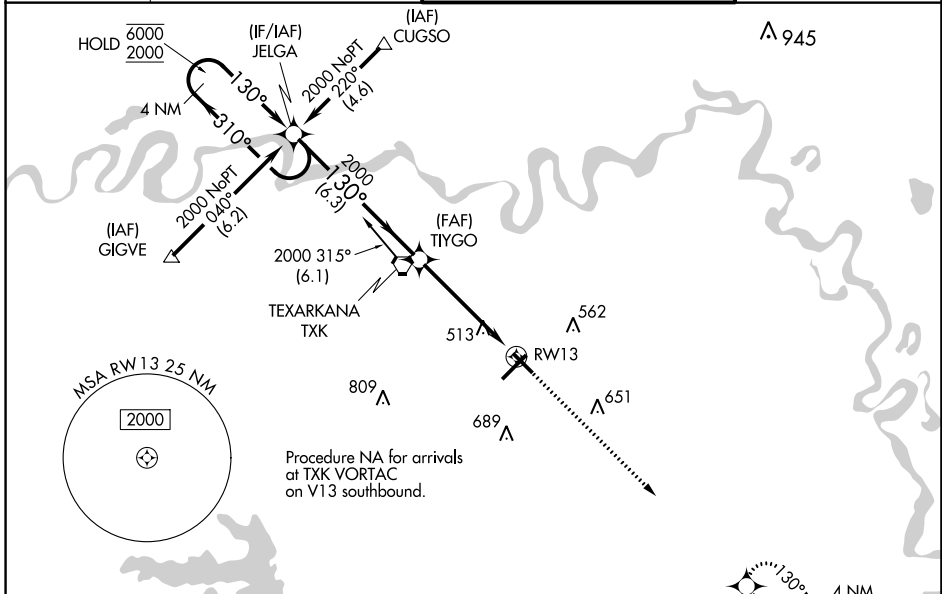
TEXARKANA RGNL-WEBB FLD (TXK)

RNP APCH - GPS.

**⚠** Baro-VNAV and VDP NA when using De Queen altimeter setting. Rwy 13 helicopter visibility reduction below  $\frac{3}{4}$  SM NA. For uncompensated Baro-VNAV systems, LNAV/VNAV NA below -15°C or above 54°C. When local altimeter setting not received, use De Queen altimeter setting and increase LPV DA to 748 feet and all Cats visibility  $\frac{1}{4}$  SM, LNAV/VNAV DA to 868 feet all Cats visibility  $\frac{3}{8}$  SM, and all MDAs 100 feet and LNAV and Circling Cats C/D visibility  $\frac{1}{4}$  SM.

**MISSED APPROACH:**  
Climb to 2000 direct WATLE and hold.

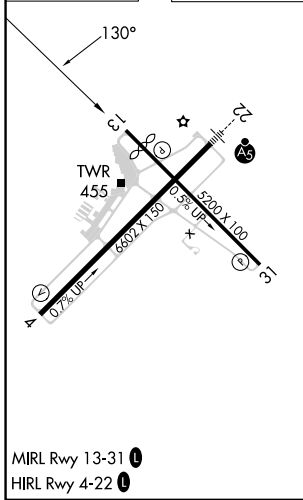
ATIS <b>120.2</b>	FORT WORTH CENTER <b>123.925 269.475</b>	TEXARKANA TOWER* <b>123.875</b> (CTAF) <b>235.625</b>	GND CON <b>119.225</b>
----------------------	---	--	---------------------------



SC-1, 22 FEB 2024 to 21 MAR 2024

SC-1, 22 FEB 2024 to 21 MAR 2024

ELEV 390	<b>D</b>	TDZE 388
----------	----------	----------



4 NM Holding Pattern	JELGA	TIYGO	2000	WATLE
6000 2000	← 310° 130° →	130° →	2000	↑
GP 3.00° TCH 54	VGSi and RNAV glidepath not coincident (VGSi Angle 3.00/TCH 48).		1.2 NM to RW13	⬠
	6.3 NM	3.8 NM	1.2 NM	
CATEGORY	A	B	C	D
LPV DA		648- $\frac{3}{4}$	260 (300- $\frac{3}{4}$ )	
LNAV/VNAV DA		768-1	380 (400-1)	
LNAV MDA	780-1	392 (400-1)	780- $\frac{1}{8}$	392 (400- $\frac{1}{8}$ )
CIRCLING	820-1 430 (500-1)	900-1 510 (600-1)	1000- $\frac{1}{4}$ 610 (700- $\frac{1}{4}$ )	1080- $\frac{1}{4}$ 690 (700- $\frac{1}{4}$ )

WAAS Ch <b>53699</b> <b>W22A</b>	APP CRS <b>220°</b>	Rwy Idg <b>6602</b> TDZE <b>384</b> Apt Elev <b>390</b>
--	------------------------	---

# RNAV (GPS) RWY 22

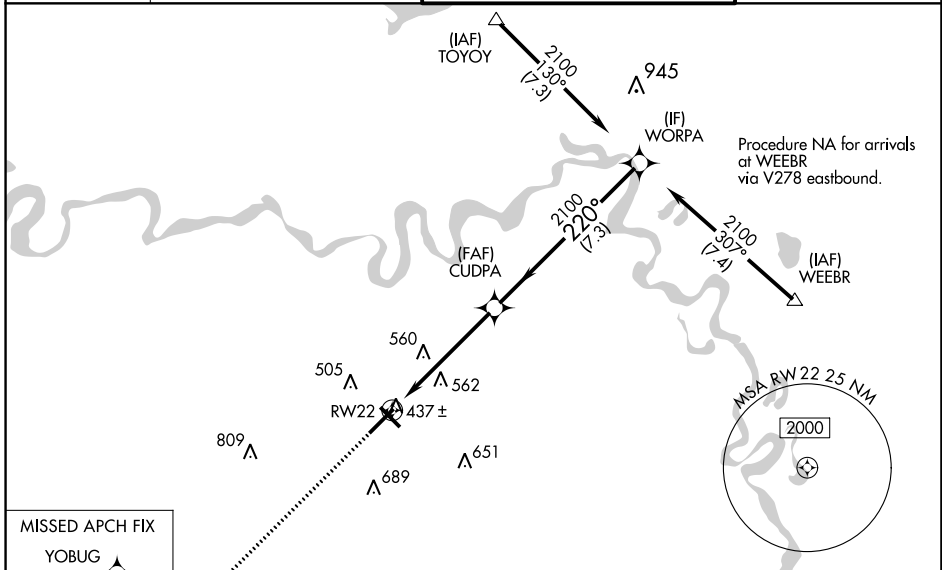
TEXARKANA RGNL-WEBB FLD (TXK)

**⚠** DME/DME RNP-0.3 NA. For uncompensated Baro-VNAV systems, LNAV/VNAV NA below -1.5°C (5°F) or above 48°C (118°F). When local altimeter setting not received, use J Lynn Helms Sevier County altimeter setting and increase all DA/MDA 100 feet, increase LPV all Cats visibility ¼ mile, LNAV/VNAV all Cats visibility ½ mile, LNAV and circling Cat C and D visibility ¼ mile. Baro-VNAV and VDP NA when using J Lynn Helms Sevier County altimeter setting. For inoperative MALSR when using J Lynn Helms Sevier County altimeter setting increase LPV all Cats visibility to 1¼.

**MALSR**

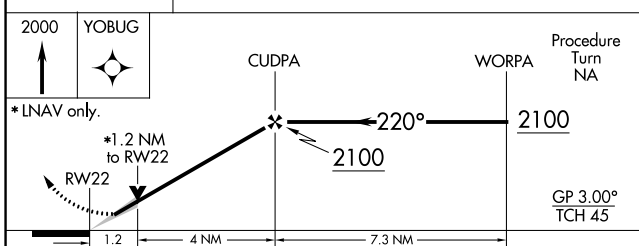
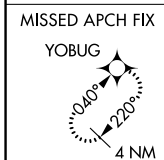
**MISSED APPROACH:**  
Climb to 2000 direct YOBUG and hold.

ATIS <b>120.2</b>	FORT WORTH CENTER <b>123.925 269.475</b>	TEXARKANA TOWER ★ <b>123.875 (CTAF) 0 235.625</b>	GND CON <b>119.225</b>
----------------------	---	--	---------------------------



SC-1, 22 FEB 2024 to 21 MAR 2024

SC-1, 22 FEB 2024 to 21 MAR 2024



ELEV 390 **D** TDZE 384

MIRL Rwy 13-31 **0**  
HIRL Rwy 4-22 **0**

CATEGORY	A	B	C	D
LPV DA	634-1/2			250 (300-1/2)
LNAV/VNAV DA	687-1/2			303 (300-1/2)
LNAV MDA	820-1/2		436 (500-1/2)	820-1
CIRCLING	820-1	900-1	1000-1 3/4	1080-2 1/4
	430 (500-1)	510 (600-1)	610 (700-1 3/4)	690 (700-2 1/4)

WAAS Ch <b>49199</b>	APP CRS <b>310°</b>	Rwy Idg <b>4559</b>
<b>W31A</b>	TDZE <b>390</b>	Apt Elev <b>390</b>

# RNAV (GPS) RWY 31

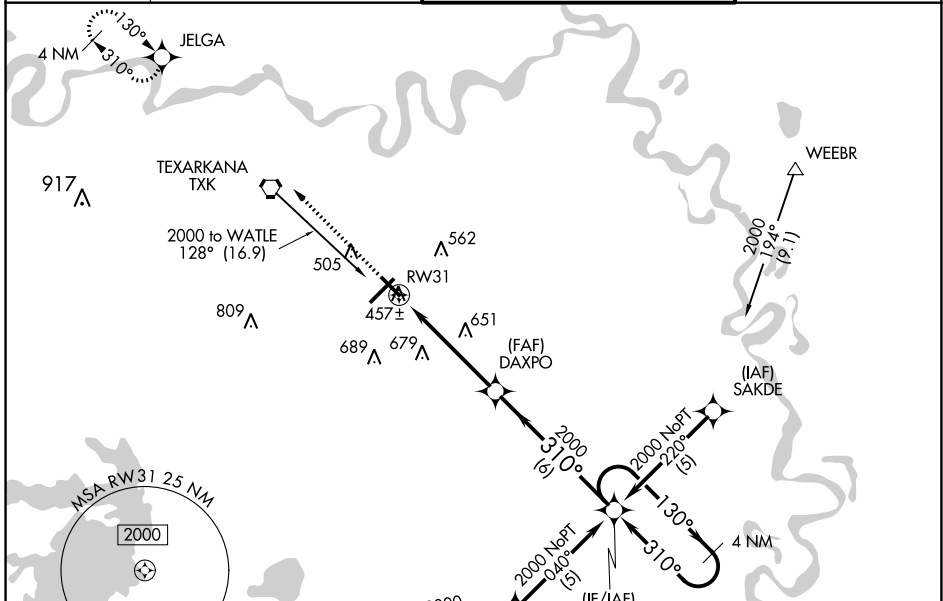
TEXARKANA RGNL-WEBB FLD (TXK)

RNP APCH-GPS.

▼ Rwy 31 helicopter visibility reduction below 3/4 SM NA. For uncompensated Baro-VNAV systems, LNAV/VNAV NA below -15°C or above 54°C. When local altimeter setting not received, use De Queen altimeter setting and increase all DA/MDA 100 feet, increase LPV and LNAV/VNAV all Cats, and LNAV Cat C and D visibility 1/4 SM, and Circling Cat C and D visibility 1/4 SM. Baro-VNAV and VDP NA when using De Queen altimeter setting.

▲ MISSED APPROACH: Climb to 2000 direct JELGA and hold.

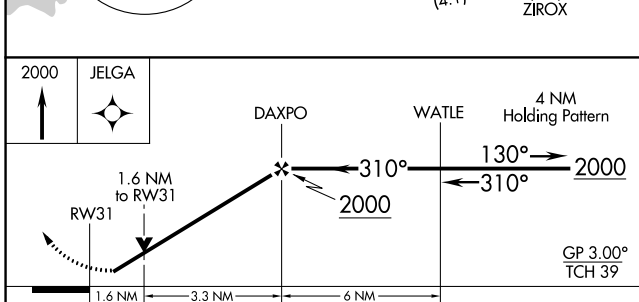
ATIS <b>120.2</b>	FORT WORTH CENTER <b>123.925 269.475</b>	TEXARKANA TOWER★ <b>123.875 (CTAF) 0 235.625</b>	GND CON <b>119.225</b>
----------------------	---	---	---------------------------



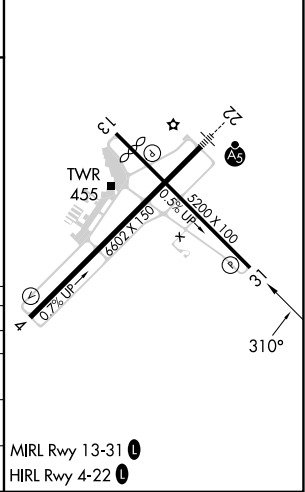
SC-1, 22 FEB 2024 to 21 MAR 2024

SC-1, 22 FEB 2024 to 21 MAR 2024

ELEV 390	TDZE 390
----------	----------



CATEGORY	A	B	C	D
LPV DA	645-1 255 (300-1)			
LNAV/VNAV DA	707-1 1/4 317 (400-1 1/4)			
LNAV MDA	920-1 530 (600-1)	920-1 1/2 530 (600-1 1/2)	920-1 3/4 530 (600-1 3/4)	
CIRCLING	920-1 530 (600-1)	1000-1 3/4 610 (700-1 3/4)	1080-2 1/4 690 (700-2 1/4)	



WAAS Ch <b>93899</b> <b>W04A</b>	APP CRS <b>040°</b>	Rwy Idg <b>6602</b> TDZE <b>360</b> Apt Elev <b>390</b>
--	------------------------	---

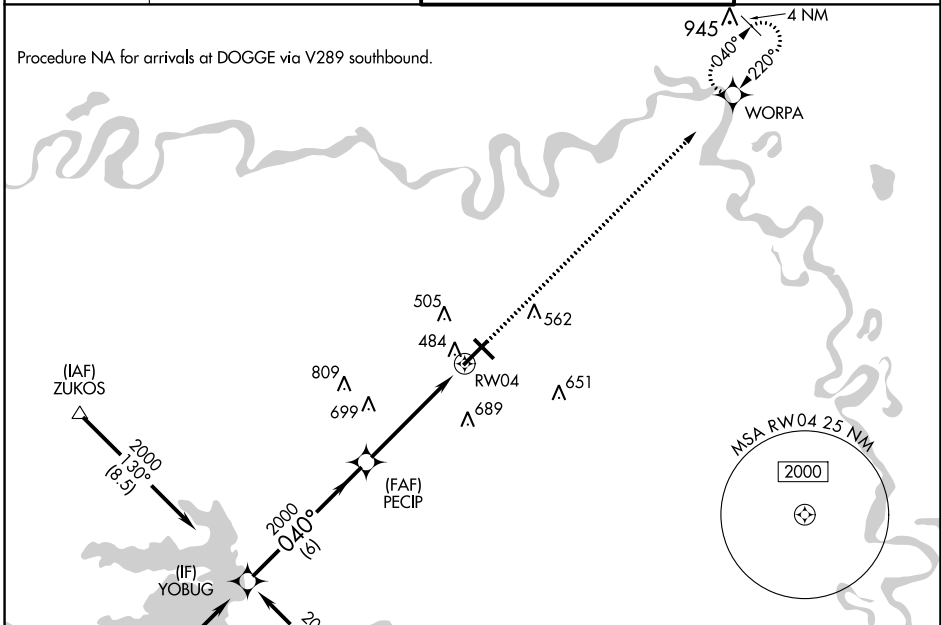
# RNAV (GPS) RWY 4

TEXARKANA RGNL-WEBB FLD (TXK)

**⚠** DME/DME RNP-0.3 NA. Visibility reduction by helicopters NA. For uncompensated Baro-VNAV systems, LNAV/VNAV NA below -15°C (5°F) or above 48°C (118°F). When local altimeter setting not received, use J Lynn Helms Sevier County altimeter setting and increase all DA/MDA 100 feet, increase LPV and LNAV/VNAV all Cats visibility ¼ mile, LNAV and Circling Cat C and D visibility ½ mile. Baro-VNAV NA when using J Lynn Helms Sevier County altimeter setting.

**⚠** MISSED APPROACH: Climb to 2100 direct WORPA and hold.

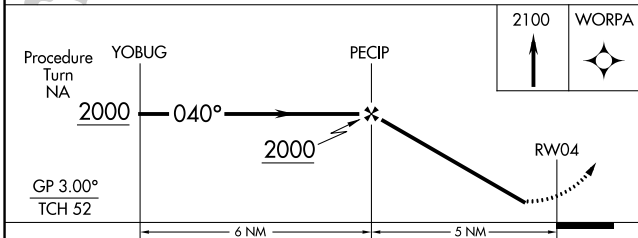
ATIS <b>120.2</b>	FORT WORTH CENTER <b>123.925 269.475</b>	TEXARKANA TOWER ★ <b>123.875 (CTAF) 0 235.625</b>	GND CON <b>119.225</b>
----------------------	---	--	---------------------------



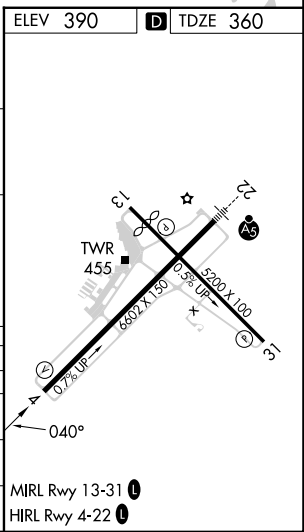
SC-1, 22 FEB 2024 to 21 MAR 2024

SC-1, 22 FEB 2024 to 21 MAR 2024

ELEV 390	<b>D</b> TDZE 360
----------	-------------------



CATEGORY	A	B	C	D
LPV DA		613-1	253 (300-1)	
LNAV/VNAV DA		866-1¾	506 (500-1¾)	
LNAV MDA	900-1	540 (600-1)	900-1½ 540 (600-1½)	900-1¾ 540 (600-1¾)
CIRCLING	900-1¾	510 (600-1¾)	1000-2 610 (700-2)	1080-2½ 690 (700-2½)



VORTAC TXK <b>116.3</b> Chan <b>110</b>	APP CRS <b>122°</b>	Rwy Idg <b>4559</b> TDZE <b>388</b> Apt Elev <b>390</b>
---	------------------------	---

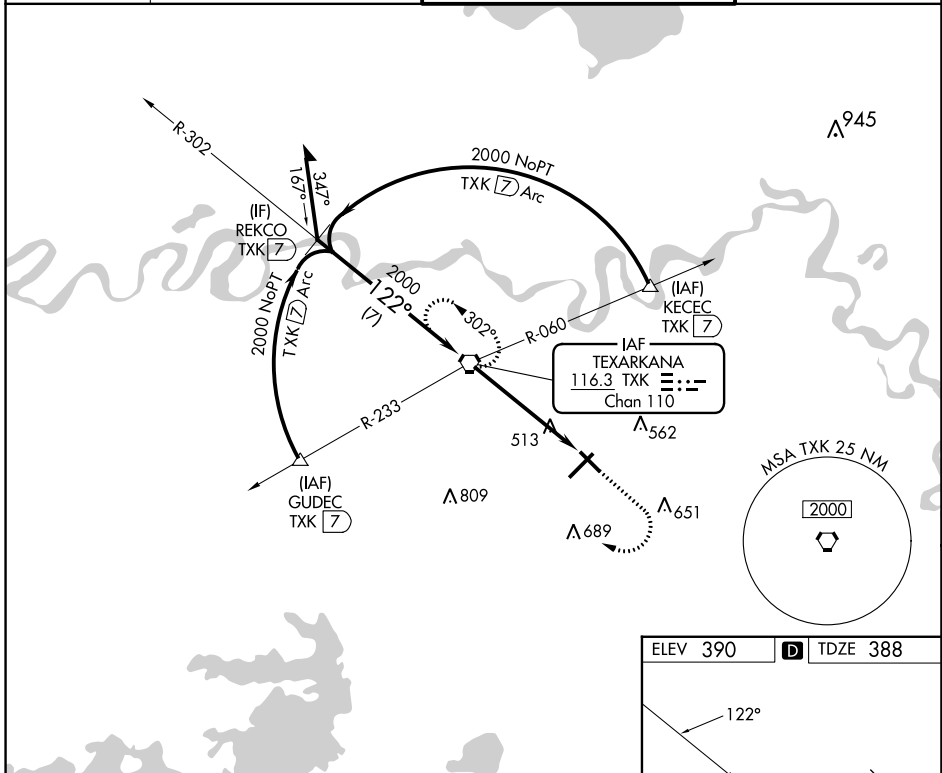
# VOR RWY 13

TEXARKANA RGNL-WEBB FLD (TXK)

**⚠** When local altimeter setting not received, use De Queen altimeter setting and increase all MDA 100 feet, increase S-13 and Cat C and D visibility  $\frac{1}{4}$  SM, and Circling Cat C and D visibility  $\frac{1}{4}$  SM. Visibility reduction by helicopters NA. VDP NA when using De Queen altimeter setting.

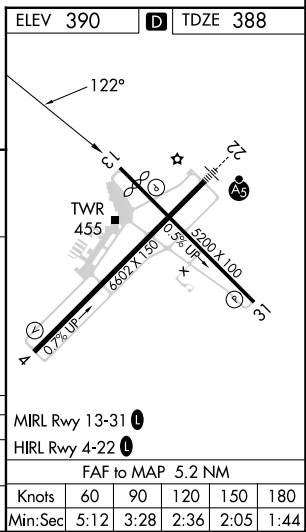
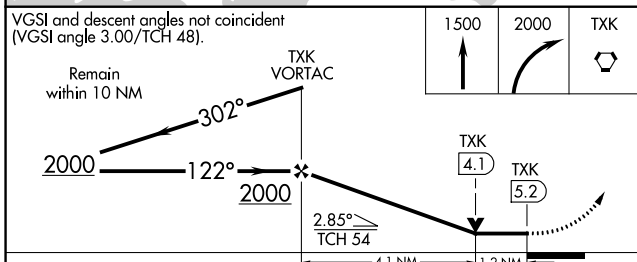
**MISSED APPROACH:** Climb to 1500 then climbing right turn to 2000 direct TXK VORTAC and hold.

ATIS <b>120.2</b>	FORT WORTH CENTER <b>123.925 269.475</b>	TEXARKANA TOWER* <b>123.875 (CTAF) 235.625</b>	GND CON <b>119.225</b>
----------------------	---	---	---------------------------



SC-1, 22 FEB 2024 to 21 MAR 2024

SC-1, 22 FEB 2024 to 21 MAR 2024



CATEGORY	A	B	C	D
S-13	780-1 392 (400-1)		780-1 $\frac{1}{8}$ 392 (400-1 $\frac{1}{8}$ )	780-1 $\frac{1}{4}$ 392 (400-1 $\frac{1}{4}$ )
CIRCLING	820-1 430 (500-1)	900-1 510 (600-1)	1000-1 $\frac{3}{4}$ 610 (700-1 $\frac{3}{4}$ )	1080-2 $\frac{1}{4}$ 690 (700-2 $\frac{1}{4}$ )