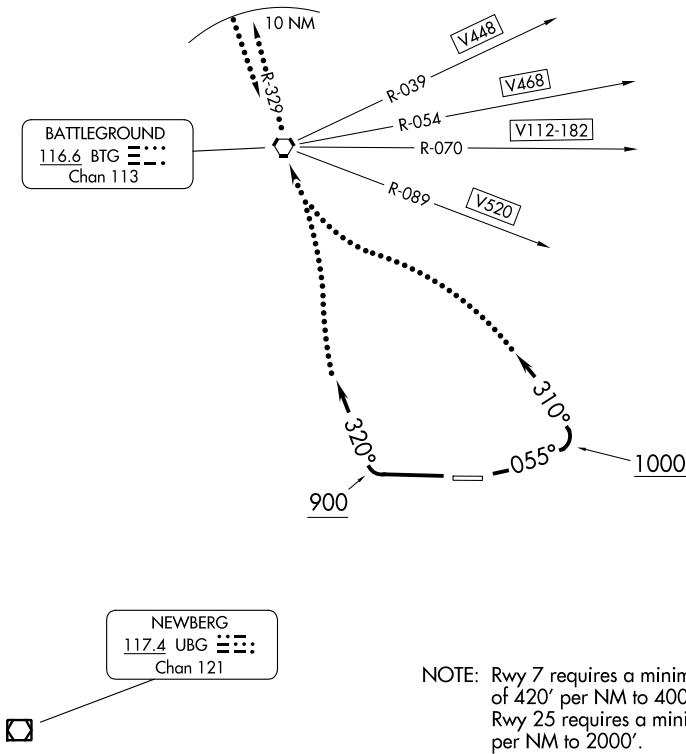


CTAF 120.9



NOTE: Chart not to scale.



#### DEPARTURE ROUTE DESCRIPTION

**TAKEOFF RUNWAY 7:** Climb via heading 055° to 1000', then turn left to 310° or as assigned.

**TAKEOFF RUNWAY 25:** Climb runway heading to 900', then turn right to 320° or as assigned.

**LOST COMMUNICATIONS:** Proceed direct to BTG VORTAC. Continue climb on the BTG R-329 within 10 NM to cross BTG VORTAC at or above: NE-bound V448, 9400'; NE-bound V468, 4500'; E-bound V112, V182, V520, 4700'; for non airways BTG R-355 CW BTG R-120, 8800'; all others, 2500'.

**ALTERNATE LOST COMMUNICATIONS PROCEDURE:** When BTG VORTAC is out of service: if no contact with ATC leaving 3000', continue climb to assigned altitude and proceed direct to UBG VOR/DME, thence via assigned route.

NW-1, 22 FEB 2024 to 21 MAR 2024

NW-1, 22 FEB 2024 to 21 MAR 2024