

▼

DEPARTURE ROUTE DESCRIPTION

TAKEOFF RUNWAYS 9L/R: Climb on heading 093° or as assigned for RADAR vectors to cross AGERS at 5000, thence. . . .

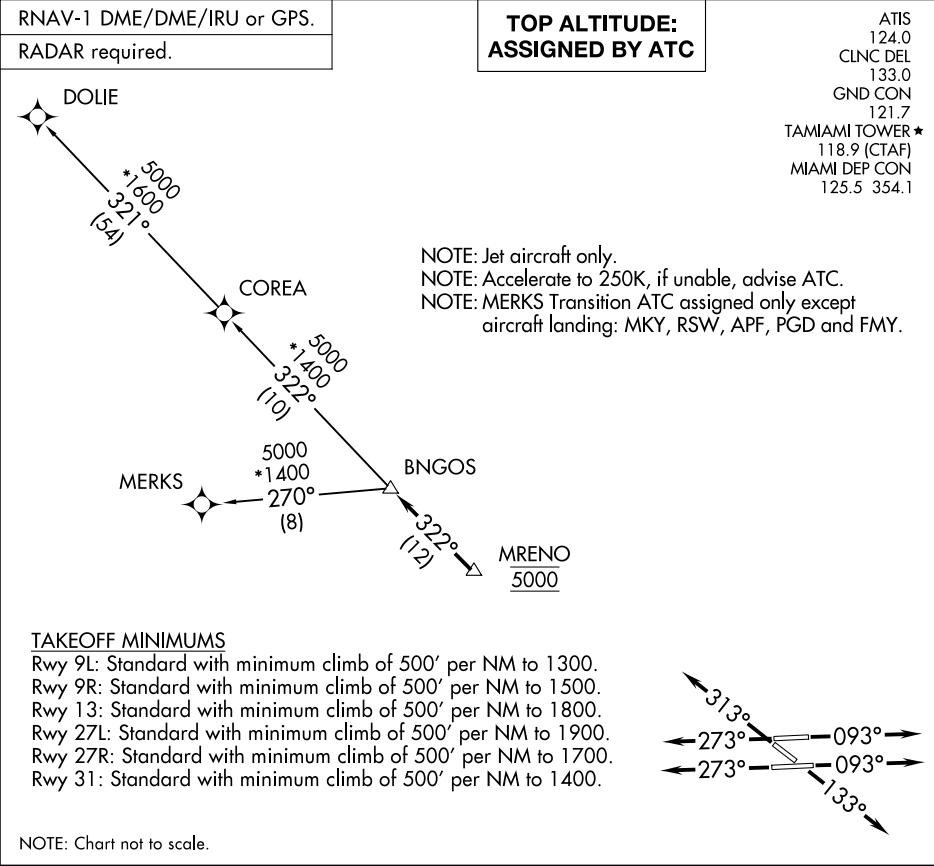
TAKEOFF RUNWAY 13: Climb on heading 133° or as assigned for RADAR vectors to cross AGERS at 5000, thence. . . .

TAKEOFF RUNWAYS 27L/R: Climb on heading 273° or as assigned for RADAR vectors to cross AGERS at 5000, thence. . . .

TAKEOFF RUNWAY 31: Climb on heading 313° or as assigned for RADAR vectors to cross AGERS at 5000, thence. . . .

. . . . on track 360° to PERTS, then on track 357° to ALTNN, then on assigned transition, maintain ATC assigned altitude, expect filed altitude within 10 minutes after departure.

DUCEN TRANSITION (ALTNN1 .DUCEN)



▼

DEPARTURE ROUTE DESCRIPTION

TAKEOFF RUNWAYS 9L/R: Climb on heading 093° or as assigned for RADAR vectors to cross MRENO at 5000, thence. . .

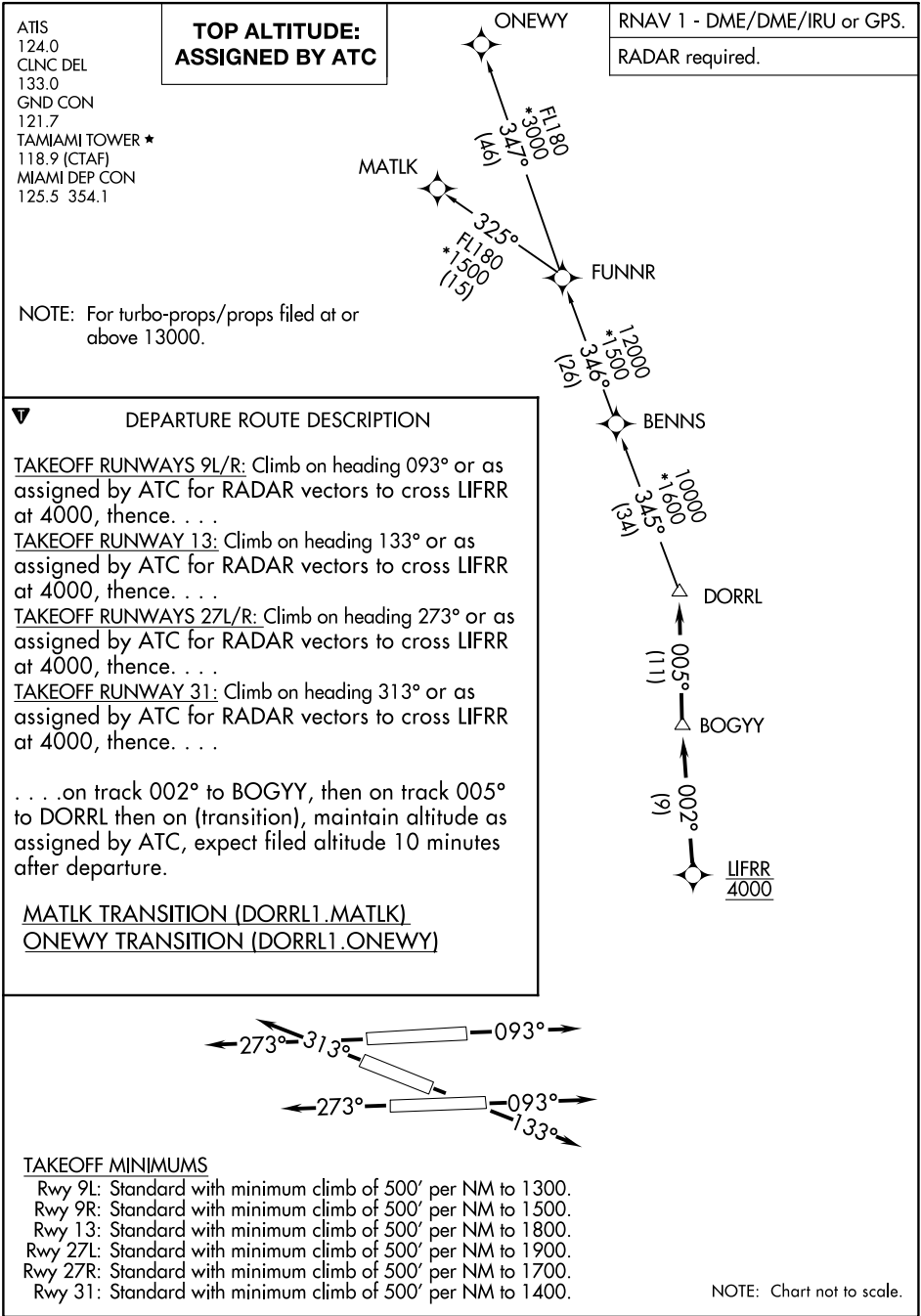
TAKEOFF RUNWAY 13: Climb on heading 133° or as assigned for RADAR vectors to cross MRENO at 5000, thence. . .

TAKEOFF RUNWAYS 27L/R: Climb on heading 273° or as assigned for RADAR vectors to cross MRENO at 5000, thence. . .

TAKEOFF RUNWAY 31: Climb on heading 313° or as assigned for RADAR vectors to cross MRENO at 5000, thence. . .

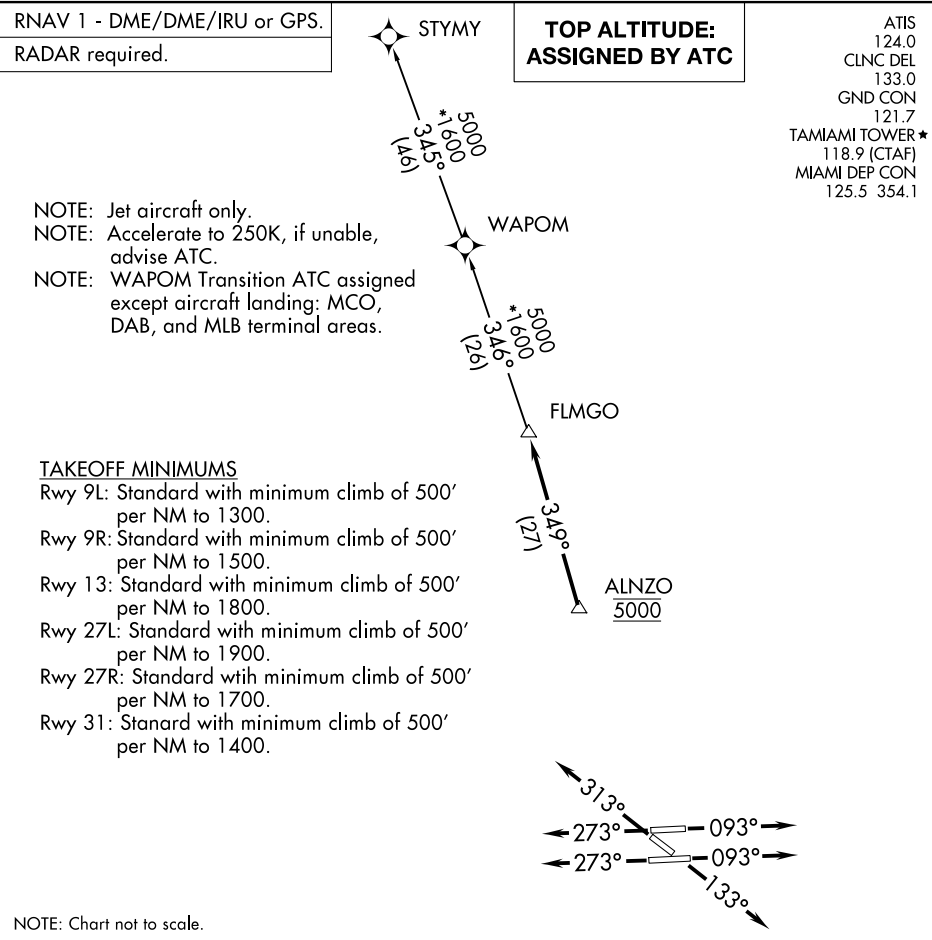
. . . on track 322° to BNGOS, then on transition, maintain ATC assigned altitude, expect clearance to filed altitude within 10 minutes after departure.

COREA TRANSITION (BNGOS3.COREA)
DOLIE TRANSITION (BNGOS3.DOLIE)
MERKS TRANSITION (BNGOS3.MERKS)



SE-3, 22 FEB 2024 to 21 MAR 2024

SE-3, 22 FEB 2024 to 21 MAR 2024



DEPARTURE ROUTE DESCRIPTION

TAKEOFF RUNWAYS 9L/R: Climb on heading 093° or as assigned for RADAR vectors to cross ALNZO at 5000, thence. . . .

TAKEOFF RUNWAY 13: Climb on heading 133° or as assigned for RADAR vectors to cross ALNZO at 5000, thence. . . .

TAKEOFF RUNWAYS 27L/R: Climb on heading 273° or as assigned for RADAR vectors to cross ALNZO at 5000, thence. . . .

TAKEOFF RUNWAY 31: Climb on heading 313° or as assigned for RADAR vectors to cross ALNZO at 5000, thence. . . .

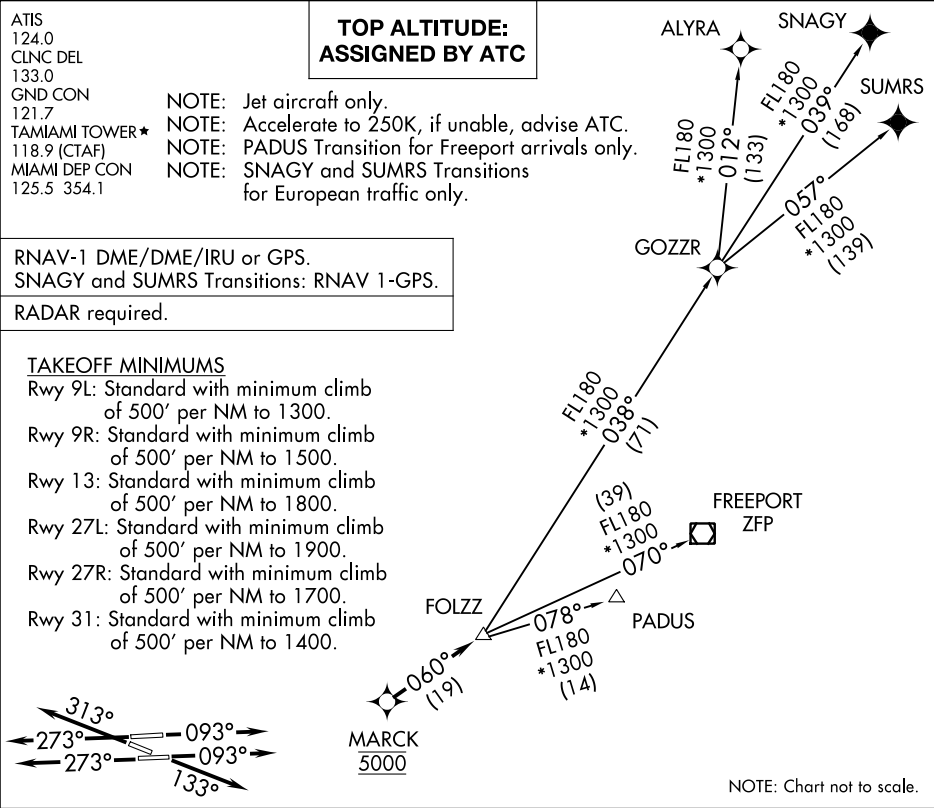
. . . .on track 349° to FLMGO, then on assigned transition. Maintain ATC assigned altitude. Expect filed altitude within 10 minutes after departure.

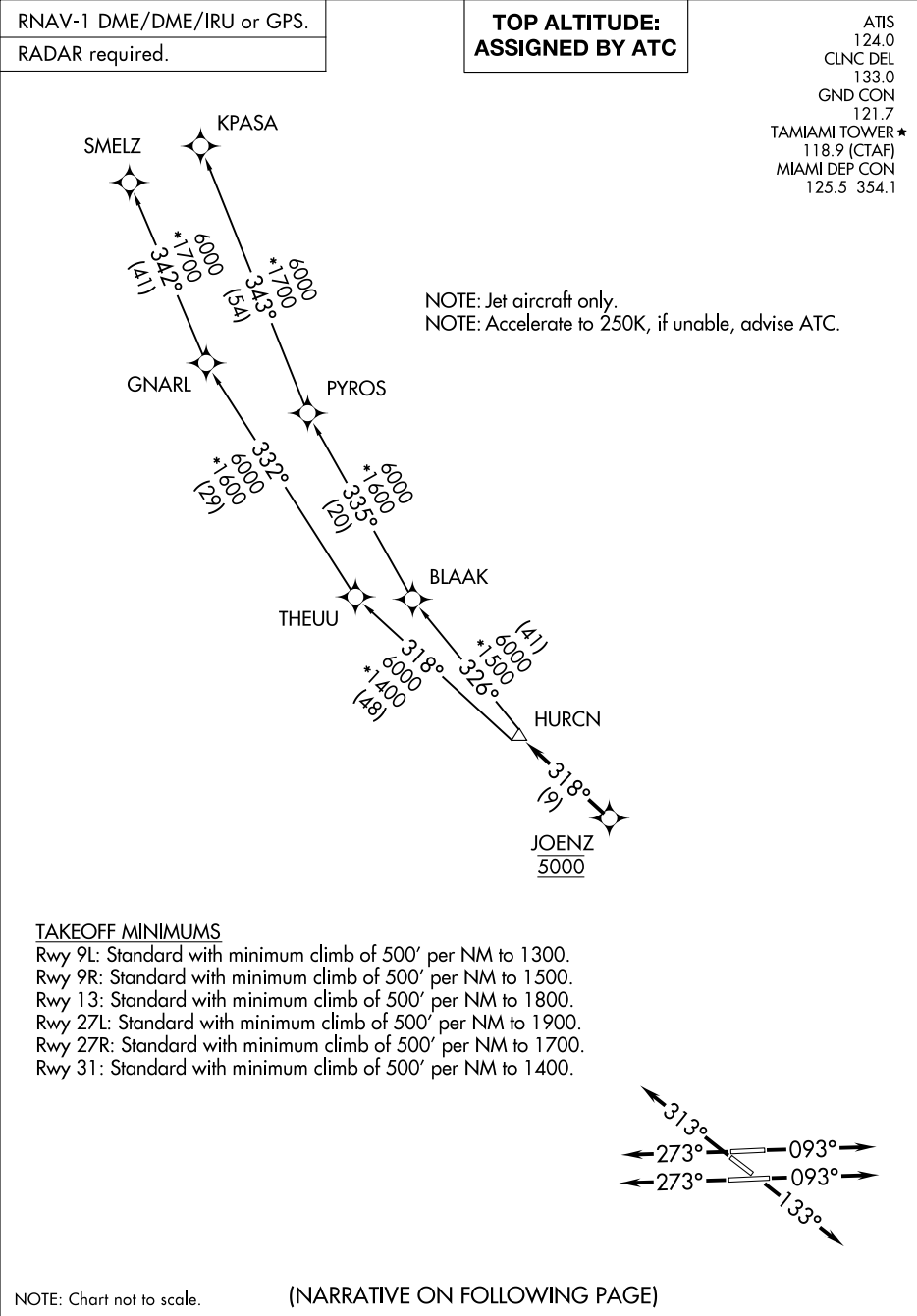
STYMY TRANSITION (FLMGO1.STYMY)

WAPOM TRANSITION (FLMGO1.WAPOM)

SE-3, 22 FEB 2024 to 21 MAR 2024

SE-3, 22 FEB 2024 to 21 MAR 2024





SE-3, 22 FEB 2024 to 21 MAR 2024

SE-3, 22 FEB 2024 to 21 MAR 2024



DEPARTURE ROUTE DESCRIPTION

TAKEOFF RUNWAYS 9L/R: Climb on heading 093° or as assigned for RADAR vectors to cross JOENZ at 5000, thence. . .

TAKEOFF RUNWAY 13: Climb on heading 133° or as assigned for RADAR vectors to cross JOENZ at 5000, thence. . .

TAKEOFF RUNWAYS 27L/R: Climb on heading 273° or as assigned for RADAR vectors to cross JOENZ at 5000, thence. . .

TAKEOFF RUNWAY 31: Climb on heading 313° or as assigned for RADAR vectors to cross JOENZ at 5000, thence. . .

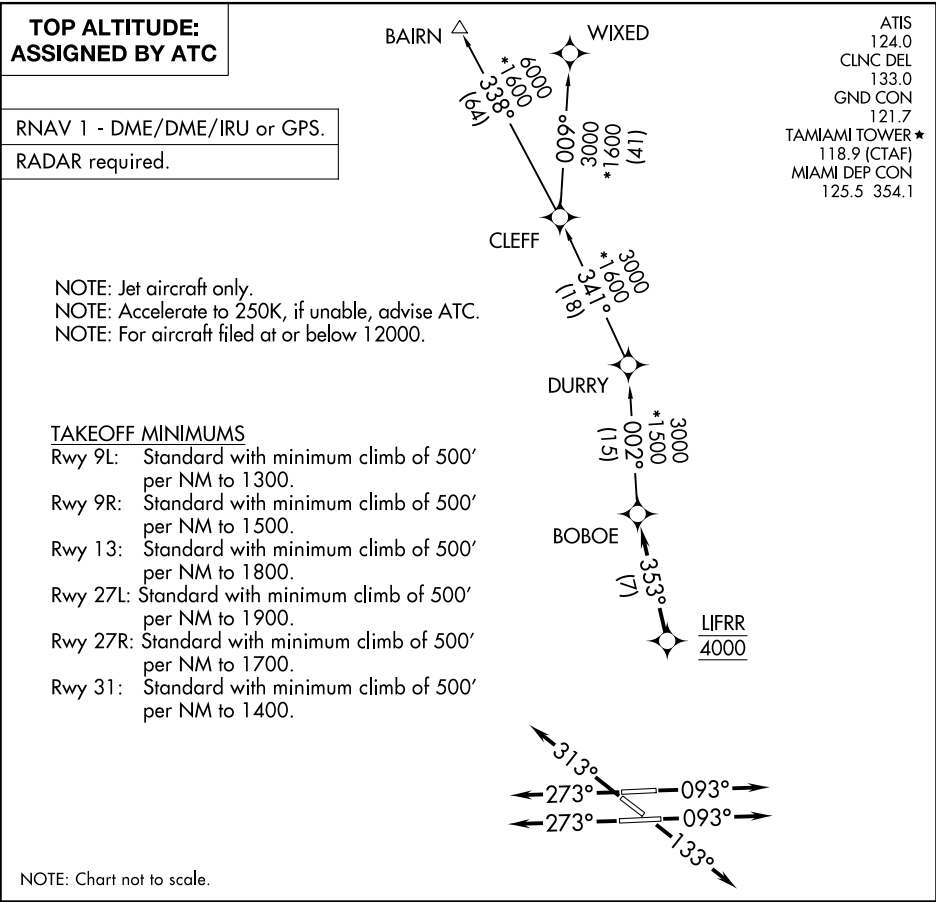
. . .on track 318° to HURCN, then on transition. Maintain ATC assigned altitude, expect clearance to filed altitude within 10 minutes after departure.

KPASA TRANSITION (HURCN3.KPASA)

SMELZ TRANSITION (HURCN3.SMELZ)

SE-3, 22 FEB 2024 to 21 MAR 2024

SE-3, 22 FEB 2024 to 21 MAR 2024



MAYNR ONE DEPARTURE (RNAV)
(MAYNR1, MAYNR) 19MAY22

MIAMI, FLORIDA
MIAMI EXEC (TMB)

ATIS
124.0
CLNC DEL
133.0
GND CON
121.7
TAMiami TOWER ★
118.9 (CTAF)
MIAMI DEP CON
125.5 354.1

RNAV1 - DME/DME/IRU or GPS.
From SLIPT to MAXIM: RNAV 1- GPS.
From SLIPT to CANOA: RNAV 1- GPS.
RADAR required.

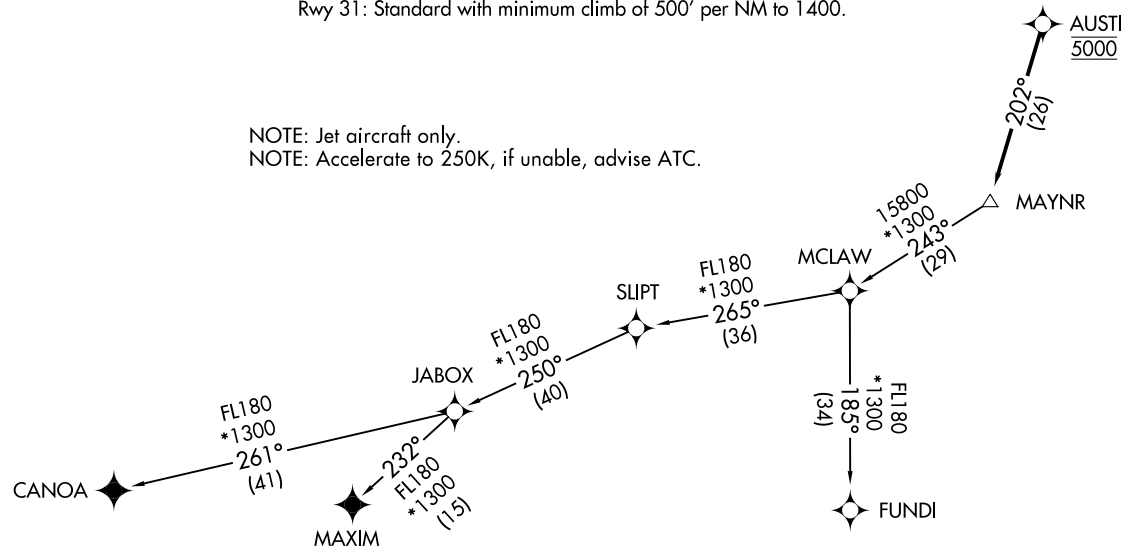
**TOP ALTITUDE:
ASSIGNED BY ATC**



TAKEOFF MINIMUMS

Rwy 9L: Standard with minimum climb of 500' per NM to 1300.
Rwy 9R: Standard with minimum climb of 500' per NM to 1500.
Rwy 13: Standard with minimum climb of 500' per NM to 1800.
Rwy 27L: Standard with minimum climb of 500' per NM to 1900.
Rwy 27R: Standard with minimum climb of 500' per NM to 1700.
Rwy 31: Standard with minimum climb of 500' per NM to 1400.

NOTE: Jet aircraft only.
NOTE: Accelerate to 250K, if unable, advise ATC.



NOTE: Chart not to scale.

(NARRATIVE ON FOLLOWING PAGE)

(MAYNR1, MAYNR) 22139
MAYNR ONE DEPARTURE (RNAV)

AL-5349 (FAA)

MIAMI EXEC (TMB)
MIAMI, FLORIDA

▼

DEPARTURE ROUTE DESCRIPTION

TAKEOFF RUNWAYS 9L/R, 13, 27L/R, 31: Climb on heading assigned by ATC for vectors to cross AUSTI at 5000, thence. . . .

. . . .on track 202° to MAYNR, then on assigned transition, maintain altitude as assigned by ATC, expect clearance to filed altitude within 10 minutes after departure.

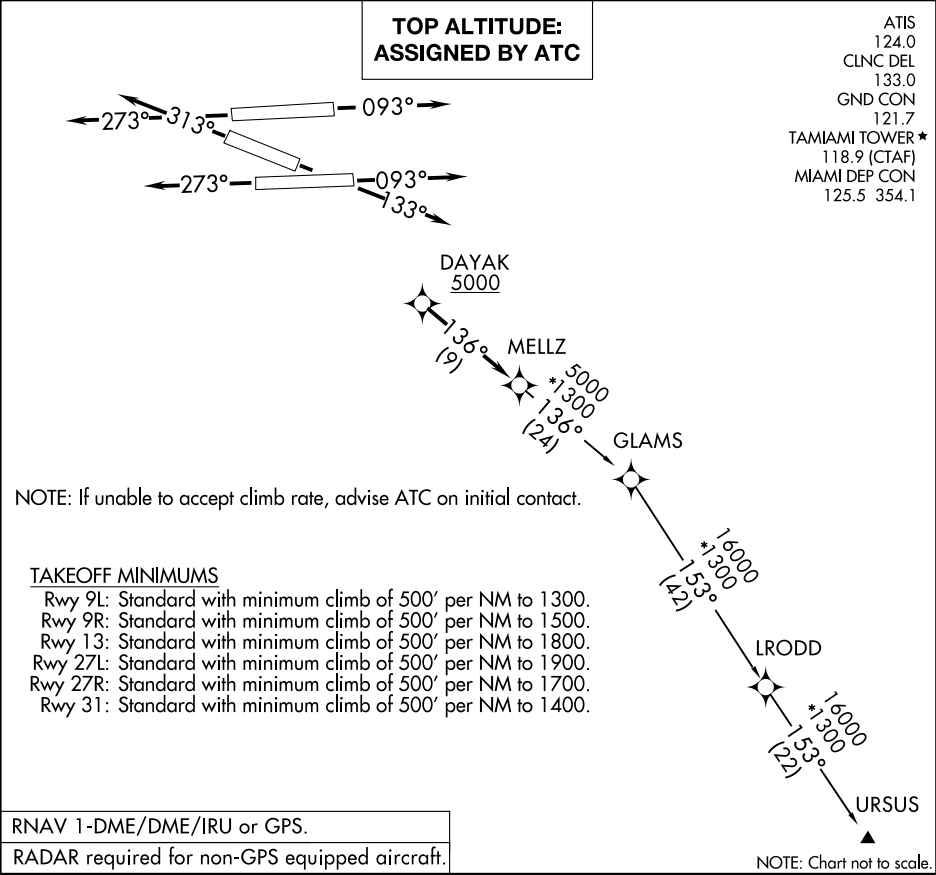
CANOA TRANSITION (MAYNR1.CANOA)

FUNDI TRANSITION (MAYNR1.FUNDI)

MAXIM TRANSITION (MAYNR1.MAXIM)

SE-3, 22 FEB 2024 to 21 MAR 2024

SE-3, 22 FEB 2024 to 21 MAR 2024



ATIS 124.0
 CLNC DEL 133.0
 GND CON 121.7
TAMiami TOWER* 118.9 (CTAF)
 MIAMI DEP CON 119.45 290.325
 (ALTNN, BEECH, BNGOS, DORRL, FLMGO, FOLZZ, HURCN, ZFP) 125.5 354.1
 (GWAVA, KETLL, MAYNR)

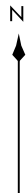
**TOP ALTITUDE:
 ASSIGNED BY ATC**

FREEPORT
 113.2 ZFP
 Chan 79
 N26° 33.32'-W78° 41.87'
 L-23, H-8

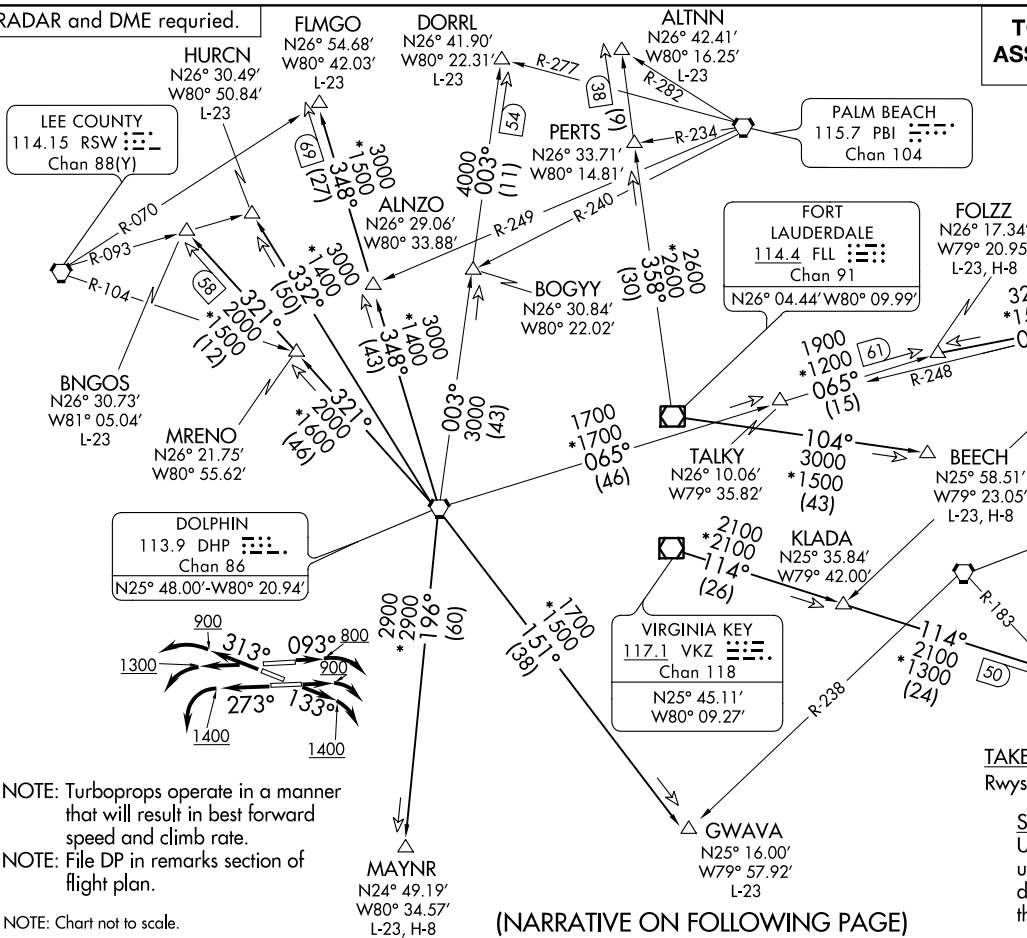
BIMINI
 116.7 ZBV
 Chan 114

TAKEOFF MINIMUMS
 Rwy 9L/R, 13, 27L/R, 31: Standard.

SPECIAL INSTRUCTIONS
 Unless otherwise assigned, use departure frequency depicted associated with the transition in clearance.



RADAR and DME required.



(NARRATIVE ON FOLLOWING PAGE)

NOTE: Turboprops operate in a manner that will result in best forward speed and climb rate.
 NOTE: File DP in remarks section of flight plan.

NOTE: Chart not to scale.



DEPARTURE ROUTE DESCRIPTION

TAKEOFF RUNWAY 9L: Climb on heading 093° to 800 before turning right, thence...
TAKEOFF RUNWAY 9R: Climb on heading 093° to 900 before turning right, thence...
TAKEOFF RUNWAY 13: Climb on heading 133° to 1400 before turning right, thence...
TAKEOFF RUNWAY 27L: Climb on heading 273° to 1400 before turning left, thence...
TAKEOFF RUNWAY 27R: Climb on heading 273° to 1300 before turning left, thence...
TAKEOFF RUNWAY 31: Climb on heading 313° to 900 before turning left, thence...

... maintain 2000 or assigned higher altitude for RADAR vectors to appropriate transition. Expect further clearance to filed altitude ten (10) minutes after departure.

ALTNN TRANSITION (MIA9.ALTNN): From over FLL VOR/DME on FLL R-358 to ALTNN.

BEECH TRANSITION (MIA9.BEECH): From over FLL VOR/DME on FLL R-104 to BEECH.

BNGOS TRANSITION (MIA9.BNGOS): From over DHP VORTAC on DHP R-321 to BNGOS.

DORRL TRANSITION (MIA9.DORRL): From over DHP VORTAC on DHP R-003 to DORRL.

FLMGO TRANSITION (MIA9.FLMGO): From over DHP VORTAC on DHP R-348 to FLMGO.

FOLZZ TRANSITION (MIA9.FOLZZ): From over DHP VORTAC on DHP R-065 to FOLZZ.

FREEPORT TRANSITION (MIA9.ZFP): From over DHP VORTAC on DHP R-065 to FOLZZ then on ZFP R-249 to ZFP VOR/DME.

GWAVA TRANSITION (MIA9.GWAVA): From over DHP VORTAC on DHP R-151 to GWAVA.

HURCN TRANSITION (MIA9.HURCN): From over DHP VORTAC on DHP R-332 to HURCN.

KETLL TRANSITION (MIA9.KETLL): From over VKZ VOR/DME on VKZ R-114 to KETLL.

MAYNR TRANSITION (MIA9.MAYNR): From over DHP VORTAC on DHP R-196 to MAYNR.

SE-3, 22 FEB 2024 to 21 MAR 2024

SE-3, 22 FEB 2024 to 21 MAR 2024