

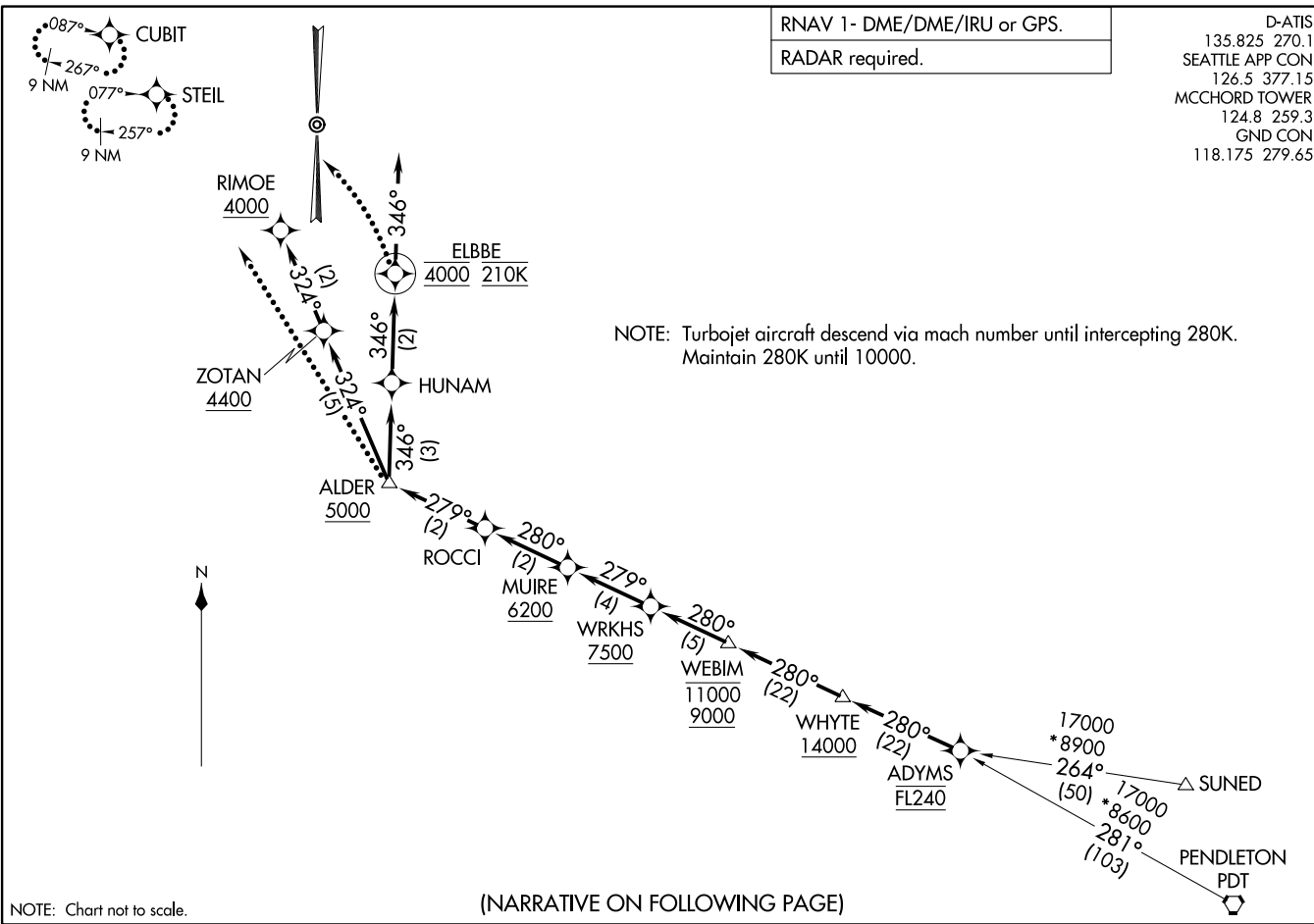
RNAV 1- DME/DME/IRU or GPS.

RADAR required.

D-ATIS
135.825 270.1
SEATTLE APP CON
126.5 377.15
MCCHORD TOWER
124.8 259.3
GND CON
118.175 279.65

(ADYMS,ADYMS3) 22027
ADYMS THREE ARRIVAL (RNAV) MCCHORD FLD (JOINT BASE LEWIS-MCCHORD) (KTCM)
AL-414 (FAA) TACOMA, WASHINGTON

ADYMS THREE ARRIVAL (RNAV) TACOMA, WASHINGTON
(ADYMS,ADYMS3) 22 JAN 22 MCCHORD FLD (JOINT BASE LEWIS-MCCHORD) (KTCM)



(NARRATIVE ON FOLLOWING PAGE)

ARRIVAL ROUTE DESCRIPTION

PENDLETON TRANSITION (PDT.ADYMS3)

SUNED TRANSITION (SUNED.ADYMS3)

From ADYMS on track 280° to cross WHYTE at or above 14000, then on track 280° to cross WEBIM between 9000 and 11000, then on track 280° to cross WRKHS at or above 7500.

LANDING RUNWAY 16: From WRKHS on track 279° to cross MUIRE at or above 6200, then on track 280° to ROCCI, then on track 279° to cross ALDER at or above 5000, then on track 346° to HUNAM, then on track 346° to cross ELBBE at 4000 and at 210K, then on track 346°. Expect RADAR vectors to final approach course or visual approach.

LANDING RUNWAY 34: From WRKHS on track 279° to cross MUIRE at or above 6200, then on track 280° to ROCCI, then on track 279° to cross ALDER at or above 5000, then on track 324° to cross ZOTAN at or above 4400, then on track 324° to cross RIMOE at/above 4000. Expect ILS or visual approach.

LOST COMMUNICATIONS

RUNWAY 34: At ALDER, execute approach, if unable, proceed direct CUBIT and hold as published, maintain 4000, squawk appropriate beacon code.

RUNWAY 16: At ELBEE, turn left direct STEIL and execute approach, if unable hold as published, maintain 4000, squawk appropriate beacon code.

NW-1, 22 FEB 2024 to 21 MAR 2024

NW-1, 22 FEB 2024 to 21 MAR 2024

ARRIE EIGHT ARRIVAL

D-ATIS
135.825 270.1
SEATTLE APP CON
126.5 377.15

VICTORIA
113.7 YYJ
Chan 84

TATOOSH
112.2 TOU
Chan 59

SEATTLE
116.8 SEA
Chan 115

OLYMPIA
113.4 OLM
Chan 81

McCHORD
Chan 33
TCM
(109.6)

EMDEN
NAVIGATIONAL PLANNING INFORMATION
Expect 10000 and maintain 10000.

NOTE: DME required.
NOTE: RADAR required.
NOTE: DOD use only.
NOTE: Chart not to scale.

ARRIVAL ROUTE DESCRIPTION

TATOOSH TRANSITION (TOU.ARRIE8): From over TOU VORTAC on TOU R-096 to ARRIE. Thence. . .

VICTORIA TRANSITION (YYJ.ARRIE8): From over YYJ VOR/DME on YYJ R-163 to ARRIE. Thence. . .

. . . From over ARRIE on OLM R-318 and TCM R-267 to CUBIT, expect RADAR vectors to final approach course.

LOST COMMUNICATIONS: Proceed direct to TCM TACAN.

NW-1, 22 FEB 2024 to 21 MAR 2024

NW-1, 22 FEB 2024 to 21 MAR 2024

ELENSBURG FOUR ARRIVAL (RNAV)
 (ELN.ELN4) 27JAN22
 MCCHORD FLD (JOINT BASE LEWIS-MCCHORD) (KTCM)
 TACOMA, WASHINGTON

D-ATIS
 135.825 270.1
 SEATTLE APP CON
 126.5 377.15
 MCCHORD TOWER
 124.8 259.3
 GND CON
 118.175 279.65

RNAV 1 - DME/DME/IRU or GPS.

RADAR required.

ARRIVAL ROUTE DESCRIPTION

ELLENSBURG TRANSITION (ELN.ELN4)

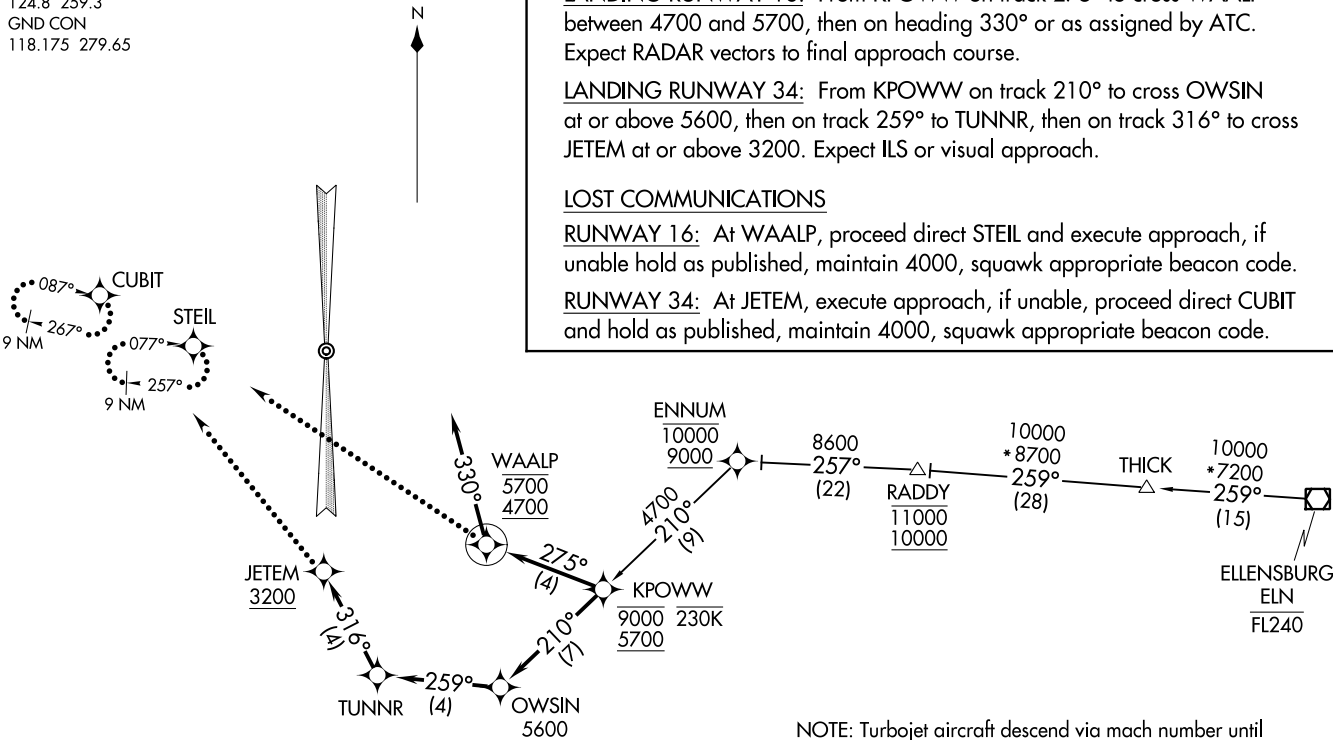
LANDING RUNWAY 16: From KPOWW on track 275° to cross WAALP between 4700 and 5700, then on heading 330° or as assigned by ATC. Expect RADAR vectors to final approach course.

LANDING RUNWAY 34: From KPOWW on track 210° to cross OWSIN at or above 5600, then on track 259° to TUNNR, then on track 316° to cross JETEM at or above 3200. Expect ILS or visual approach.

LOST COMMUNICATIONS

RUNWAY 16: At WAALP, proceed direct STEIL and execute approach, if unable hold as published, maintain 4000, squawk appropriate beacon code.

RUNWAY 34: At JETEM, execute approach, if unable, proceed direct CUBIT and hold as published, maintain 4000, squawk appropriate beacon code.



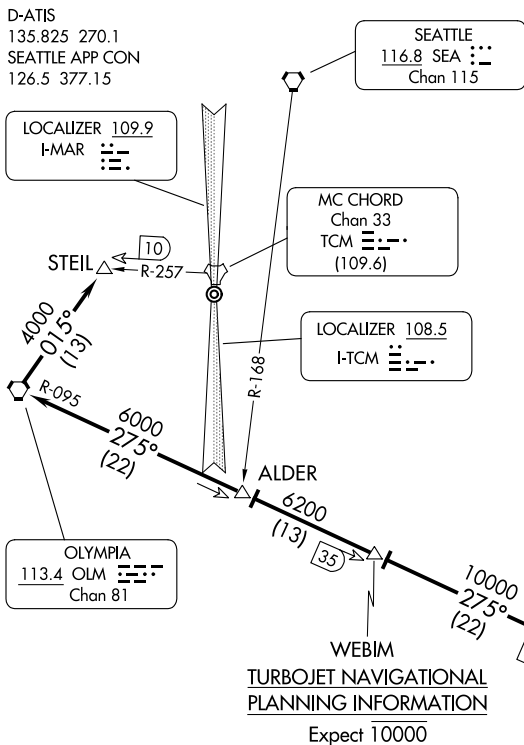
NOTE: Chart not to scale.

NOTE: Turbojet aircraft descend via mach number until intercepting 280K, maintain 280K until 10000.

(ELN.ELN4) 20027
ELLENSBURG FOUR ARRIVAL (RNAV)
 MCCHORD FLD (JOINT BASE LEWIS-MCCHORD) (KTCM)
 A1-414 (FAA)
 TACOMA, WASHINGTON

WHYTE SEVEN ARRIVAL
(WHYTE:WHYTE7) 27JAN22

MCCHORD FLD (JOINT BASE LEWIS-MCCHORD) (KTCM)
TACOMA, WASHINGTON



NOTE: DME required.
NOTE: RADAR required.
NOTE: DOD use only.

NOTE: Chart not to scale.

ARRIVAL ROUTE DESCRIPTION

PENDLETON TRANSITION (PDT.WHYTE7): From over PDT VORTAC on PDT R-282 and OLM R-095 to WHYTE. Thence. . .
YAKIMA TRANSITION (YKM.WHYTE7): From over YKM VORTAC on YKM R-250 to WHYTE. Thence. . .

. . .From over WHYTE on OLM R-095 to WEBIM, then on OLM R-095 to ALDER. Thence. . .

RUNWAY 34: Expect ILS or LOC RWY 34 or ILS RWY 34 (CAT II) approach.

RUNWAY 16: On OLM R-095 to OLM VORTAC, then on OLM R-015 to STEIL, expect ILS or LOC Z RWY 16 or TACAN RWY 16 approach.



(WHYTE:WHYTE7) 23334
WHYTE SEVEN ARRIVAL

MCCHORD FLD (JOINT BASE LEWIS-MCCHORD) (KTCM)
TACOMA, WASHINGTON
AL-1.4 (FAA)

DME and RADAR required.

SEATTLE APP CON
123.9 338.2
BFI ATIS
127.75
KTCM D-ATIS
135.825 270.1
RNT ATIS
126.95
SEA D-ATIS
118.0

JAKSN
PROP/TURBOPROP: 10000 250K
Maintain 10000.
JET AIRCRAFT: Landing North: 16000 270K
Landing South: 12000 250K
Maintain 12000.
Landing BFI or RNT: 11000 250K
Maintain 11000.

CRANBROOK
112.1 YXC
Chan 58

PAINE
110.6 PAE
Chan 43

WOODI
JET AIRCRAFT:
Landing North:
14000

HETHR
JET AIRCRAFT:
Landing North:
12000 250K
Maintain 12000.

BOEING FLD/
KING COUNTY
INTL

RENTON MUNI

SEATTLE-TACOMA
INTL

SEATTLE
116.8 SEA
Chan 115

MCCHORD FLD
◎ (JOINT BASE LEWIS-MCCHORD)

WITRO
17000
*9400
255°
(27)
ODAHL
60
10000
*9400
255°
(21) GLASR (16)

TEMPL
FL180
*9400
084°
FL180
*9400
264°
(76)

SPOKANE
115.5 GEG
Chan 102

MULLAN PASS
117.8 MLP
Chan 125

ELLENSBURG
117.9 ELN
Chan 126

NOTE: Landing north/landing south restrictions
are issued per the KSEA flow.

(CONTINUED ON FOLLOWING PAGE)

NOTE: Chart not to scale.



GLASR THREE ARRIVAL
(GLASR, GLASR3) 251AN24

SEATTLE, WASHINGTON

GLASR THREE ARRIVAL
(GLASR, GLASR3) 24025

AL-582 (FAA)

SEATTLE, WASHINGTON

ARRIVAL ROUTE DESCRIPTION

CRANBROOK TRANSITION (YXC.GLASR3): From over YXC VOR/DME on YXC R-192 and GEG R-013 to GEG VORTAC, then on GEG R-264 to WITRO, then on PAE R-075 to GLASR. Thence. . . .

MULLAN PASS TRANSITION (MLP.GLASR3): From over MLP VOR/DME on MLP R-260 and GEG R-080 to GEG VORTAC, then on GEG R-264 to WITRO, then on PAE R-075 to GLASR. Thence. . . .

SPOKANE TRANSITION (GEG.GLASR3): From over GEG VORTAC on GEG R-264 to WITRO, then on PAE R-075 to GLASR. Thence. . . .

TEMPL TRANSITION (TEMPL.GLASR3): From over TEMPL on GEG R-264 to WITRO, then on PAE R-075 to GLASR. Thence. . . .

. . . .from GLASR on PAE R-075 to JAKSN, then on SEA R-023 to WOODI, then on SEA R-023 to HETHR. Thence. . . .

LANDING NORTH: Heading 163° for vectors to final approach course.

LANDING SOUTH: Heading 250° for vectors to final approach course.

LANDING MCCHORD FLD: From over HETHR, proceed direct to SEA VORTAC.

LANDING RENTON MUNI: From over HETHR, proceed direct to SEA VORTAC.

LOST COMMUNICATIONS: From HETHR, proceed direct SEA VORTAC.

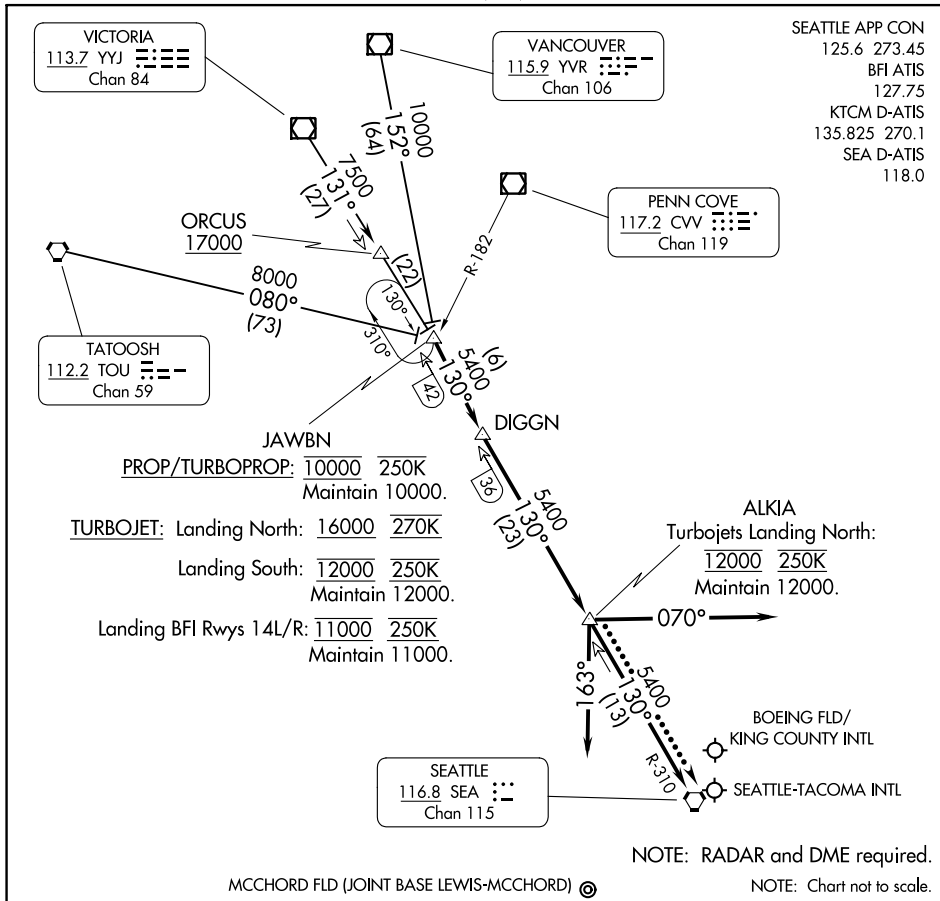
NW-1, 22 FEB 2024 to 21 MAR 2024

NW-1, 22 FEB 2024 to 21 MAR 2024

JAWBN SIX ARRIVAL

AL-582 (FAA)

SEATTLE, WASHINGTON



NW-1, 22 FEB 2024 to 21 MAR 2024

NW-1, 22 FEB 2024 to 21 MAR 2024

ARRIVAL ROUTE DESCRIPTION

TATOOSH TRANSITION (TOU.JAWBN6): From over TOU VORTAC on TOU R-080 to JAWBN. Thence . . .

VANCOUVER TRANSITION (YVR.JAWBN6): From over YVR VOR/DME on YVR R-152 to JAWBN. Thence . . .

VICTORIA TRANSITION (YYJ.JAWBN6): From over YYJ VOR/DME on YYJ R-131 to JAWBN. Thence . . .

. . . from over JAWBN on SEA R-310 to DIGGN then on SEA R-310 to ALKIA thence . . .

LANDING SOUTH: depart ALKIA heading 070° for vectors to final approach course.

LANDING NORTH: depart ALKIA heading 163° for vectors to final approach course.

LANDING MCCHORD FLD: depart ALKIA proceed direct SEA VORTAC.

LOST COMMUNICATIONS: After ALKIA, proceed direct SEA VORTAC.

JAWBN SIX ARRIVAL

SEATTLE, WASHINGTON