

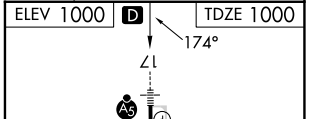
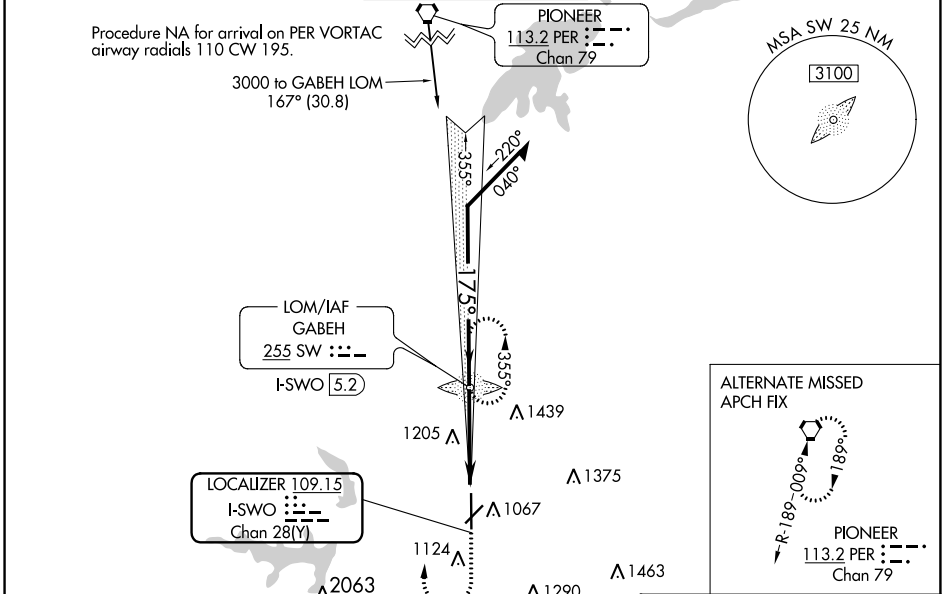
| | | |
|--|------------------------|---|
| LOC/DME I-SWO 109.15 Chan 28 (Y) | APP CRS 175° | Rwy Idg 7401 TDZE 1000 Apt Elev 1000 |
|--|------------------------|---|

ILS or LOC RWY 17

STILLWATER RGNL (SWO)

| | | |
|---|-------------|--|
| ADF required. | MALSR AS | <p>MISSED APPROACH: Climb to 1500 then climbing right turn to 3200 direct GABEH LOM and hold, continue climb-in-hold to 3200.</p> |
| <p>⚠ VDP NA when using Ponca City altimeter setting. When local altimeter setting not received, use Ponca City altimeter setting and increase S-ILS 17 DA to 1280 feet; increase all MDAs 80 feet and S-LOC 17 visibility Cats C/D 1/8 SM, and increase Circling Cat C visibility 1/2 SM and Cat D visibility 1/2 SM. For inop ALS when using Ponca City altimeter setting, increase S-ILS 17 all Cats visibility to 7/8 SM.</p> | | |

| | | | | |
|------------------------|--|---|-------------------------|-------------------------|
| ASOS 135.725 | KANSAS CITY CENTER 127.8 319.1 | STILLWATER TOWER ★ 125.35 (CTAF) 0 | GND CON 121.6 | UNICOM 122.95 |
|------------------------|--|---|-------------------------|-------------------------|



| | | | | |
|----------|-----------------------|-----------------------|-----------------------------|-----------------------------|
| CATEGORY | A | B | C | D |
| S-ILS 17 | | 1200-1/2 | 200 (200-1/2) | |
| S-LOC 17 | 1460-1/2 | 460 (500-1/2) | 1460-7/8 | 460 (500-7/8) |
| CIRCLING | 1460-1 460 (500-1) | 1480-1 480 (500-1) | 1540-1 1/2 540 (600-1/2) | 1740-2 1/4 740 (800-2/4) |

| | |
|----------------------|----------------------------------|
| REIL Rwy 35 0 | MIRL Rwy 4-22 and 17-35 0 |
| FAF to MAP 3.8 NM | |
| Knots | 60 90 120 150 180 |
| Min:Sec | 3:48 2:32 1:54 1:31 1:16 |

| | | |
|--|------------------------|---|
| WAAS CH 90108 W17A | APP CRS 174° | Rwy Ldg 7401 TDZE 1000 Apt Elev 1000 |
|--|------------------------|---|

RNAV (GPS) RWY 17

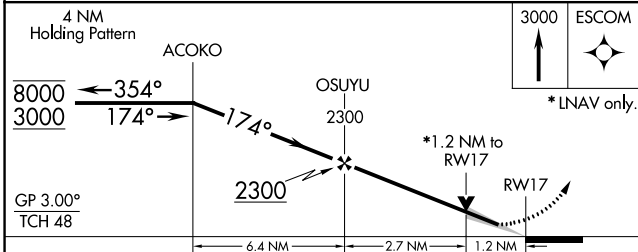
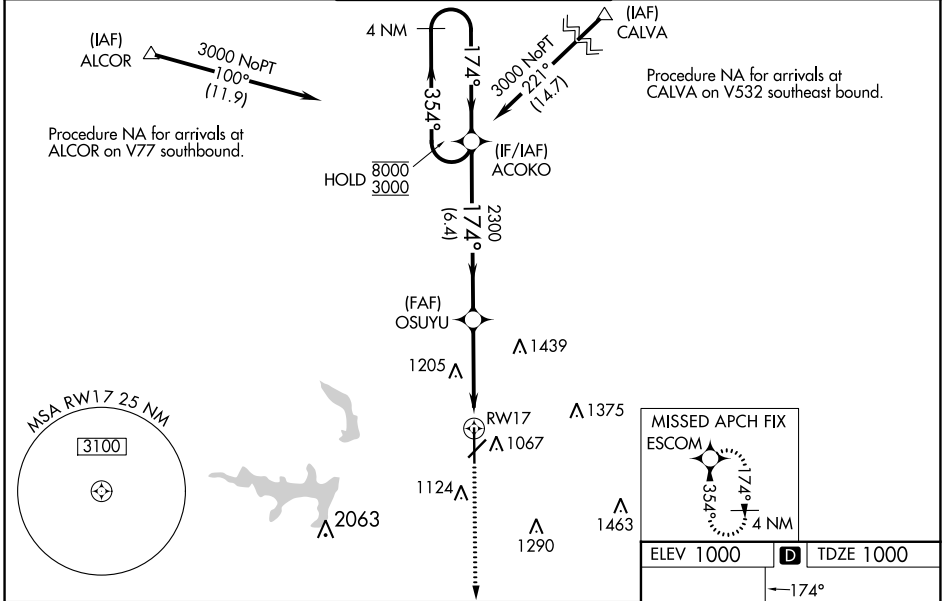
STILLWATER RGNL (SWO)

RNP APCH - GPS.

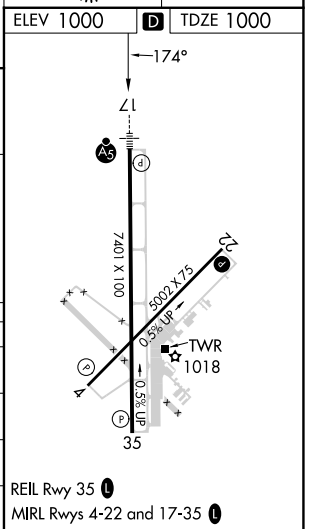
⚠ For uncompensated Baro-VNAV systems, LNAV/VNAV NA below -15°C or above 54°C. VDP and Baro-VNAV NA when using Ponca City altimeter setting. For inop ALS when using Ponca City altimeter setting, increase LPV visibility to ¾ SM, LNAV/VNAV visibility to 1 SM, and LNAV Cats C and D visibility to 1 ¾ SM. When local altimeter setting not received, use Ponca City altimeter setting; increase LPV DA to 1280 feet; increase LNAV/VNAV DA to 1359 feet and all visibilities ½ SM; increase all MDA 80 feet and visibility LNAV Cats C and D ¼ SM and Circling Cat D ½ SM. For inop ALS, increase LNAV/VNAV visibility to ¾ SM.

MALSR MISSED APPROACH: Climb to 3000 direct ESCOM and hold.

| | | | | |
|------------------------|--|--|-------------------------|-------------------------|
| ASOS 135.725 | KANSAS CITY CENTER 127.8 319.1 | STILLWATER TOWER ★ 125.35 (CTAF) 0 | GND CON 121.6 | UNICOM 122.95 |
|------------------------|--|--|-------------------------|-------------------------|



| CATEGORY | A | B | C | D |
|--------------|-----------------------|-----------------------|-------------------------|-------------------------|
| LPV DA | | 1200-½ | 200 (200-½) | |
| LNAV/VNAV DA | | 1279-½ | 279 (300-½) | |
| LNAV MDA | 1440-½ | 440 (500-½) | 1440-¾ | 440 (500-¾) |
| CIRCLING | 1440-1 440 (500-1) | 1460-1 460 (500-1) | 1520-1½ 520 (600-1½) | 1740-2¼ 740 (800-2¼) |



SC-1, 22 FEB 2024 to 21 MAR 2024

SC-1, 22 FEB 2024 to 21 MAR 2024

| | | | |
|--|------------------------|-----------------------------|--|
| WAAS CH 42633 W35A | APP CRS 354° | Rwy Idg TDZE Apt Elev | 7401 966 1000 |
|--|------------------------|-----------------------------|--|

RNAV (GPS) RWY 35

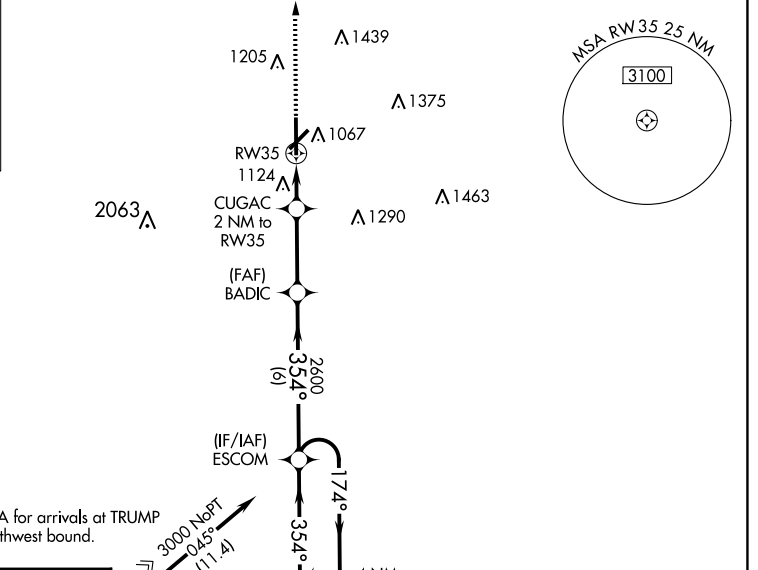
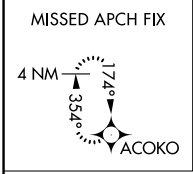
STILLWATER RGNL (SWO)

RNP APCH - GPS.

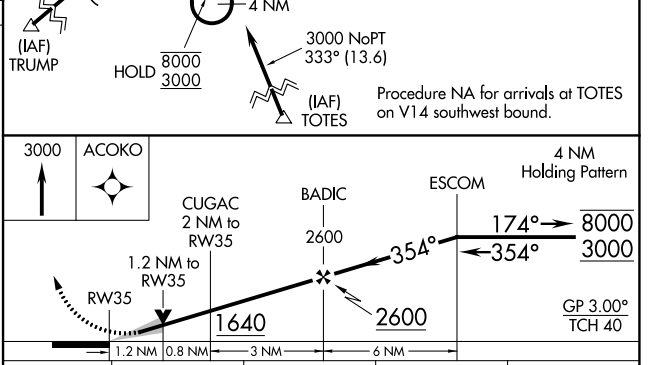
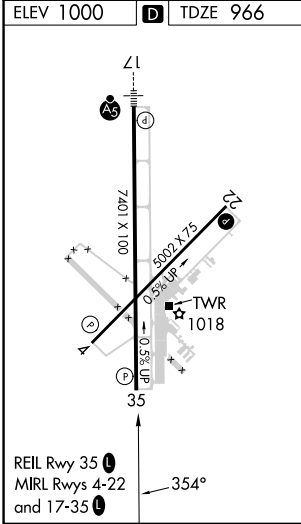
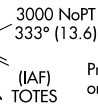
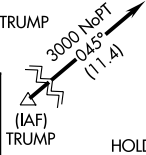
⚠ Baro-VNAV and VDP NA when using Ponca City altimeter setting. For uncompensated Baro-VNAV systems, LNAV/VNAV NA below -16°C or above 54°C. When local altimeter setting not received, use Ponca City altimeter setting: increase LPV DA to 1246 feet and all visibilities 1/2 SM. Increase LNAV/VNAV DA to 1336 feet and all visibilities 1/2 SM. Increase all MDAs 80 feet and LNAV visibility Cats C/D 1/4, and Circling visibility Cat D 1/2 SM.

MISSED APPROACH:
Climb to 3000 direct ACOKO and hold.

| | | | | |
|------------------------|--|--|-------------------------|-------------------------|
| ASOS 135.725 | KANSAS CITY CENTER 127.8 319.1 | STILLWATER TOWER ★ 125.35 (CTAF) 0 | GND CON 121.6 | UNICOM 122.95 |
|------------------------|--|--|-------------------------|-------------------------|



Procedure NA for arrivals at TRUMP on V354 southwest bound.



| CATEGORY | A | B | C | D |
|--------------|-----------------------|-----------------------|-------------------------------|-------------------------------|
| LPV DA | | 1166-3/4 | 200 (200-3/4) | |
| LNAV/VNAV DA | | 1256-1 | 290 (300-1) | |
| LNAV MDA | 1380-1 | 414 (400-1) | 1380-1 1/8 | 414 (400-1 1/8) |
| CIRCLING | 1460-1 460 (500-1) | 1480-1 480 (500-1) | 1540-1 1/2 540 (600-1 1/2) | 1740-2 1/4 740 (800-2 1/4) |

SC-1, 22 FEB 2024 to 21 MAR 2024


SC-1, 22 FEB 2024 to 21 MAR 2024

| | | |
|--|------------------------|---|
| VOR/DME SWO 108.4 Chan 21 | APP CRS 178° | Rwy Idg 7401 TDZE 1000 Apt Elev 1000 |
|--|------------------------|---|

VOR RWY 17

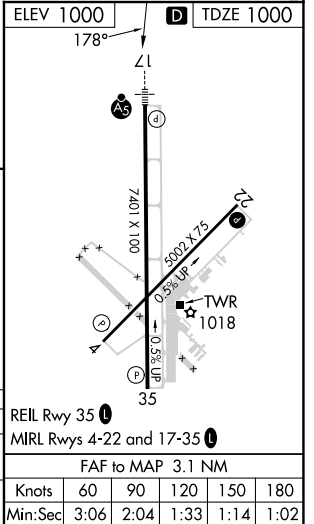
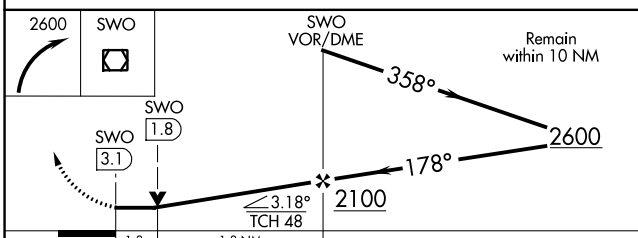
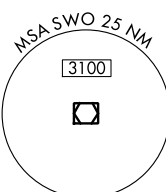
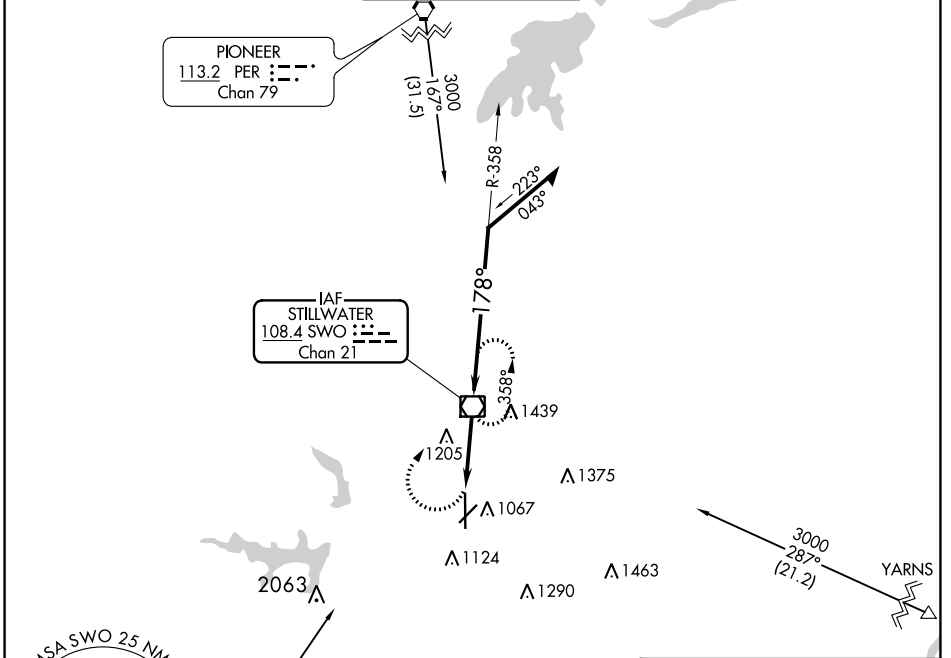
STILLWATER RGNL (SWO)


⚠ When local altimeter setting not received, use Ponca City Rgnl altimeter setting and increase all MDA 80 feet and Circling Cat D visibility ½ mile. VDP NA with Ponca City altimeter setting. For inop MALSRS increase S-17 Cats A/B visibility to 1 mile. Helicopter visibility reduction below ¾ SM NA.

MALSRS 

MISSED APPROACH: Climbing right turn to 2600 direct SWO VOR/DME and hold.

| | | | | |
|------------------------|--|--|-------------------------|-------------------------|
| ASOS 135.725 | KANSAS CITY CENTER 127.8 319.1 | STILLWATER TOWER ★ 125.35 (CTAF) 0 | GND CON 121.6 | UNICOM 122.95 |
|------------------------|--|--|-------------------------|-------------------------|



| CATEGORY | A | B | C | D |
|--|--------------------|----------------------|---|----------------------|
| S-17 | 1460-¾ 460 (500-¾) | | | 1460-1 460 (500-1) |
|  CIRCLING | 1460-1 460 (500-1) | 1520-1½ 520 (600-1½) | | 1740-2¼ 740 (800-2¼) |

| | | |
|--|------------------------|--|
| VOR/DME SWO 108.4 Chan 21 | APP CRS 356° | Rwy Idg 7401 TDZE 966 Apt Elev 1000 |
|--|------------------------|--|

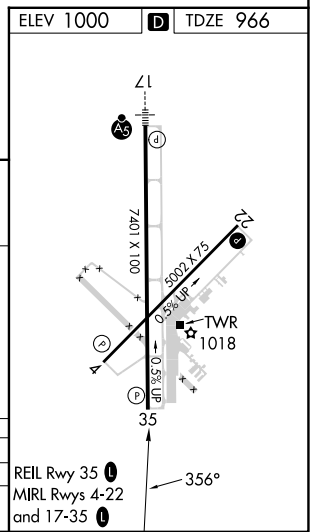
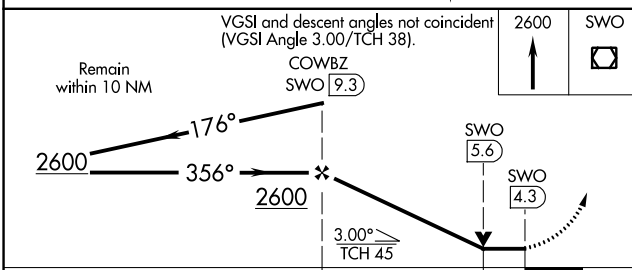
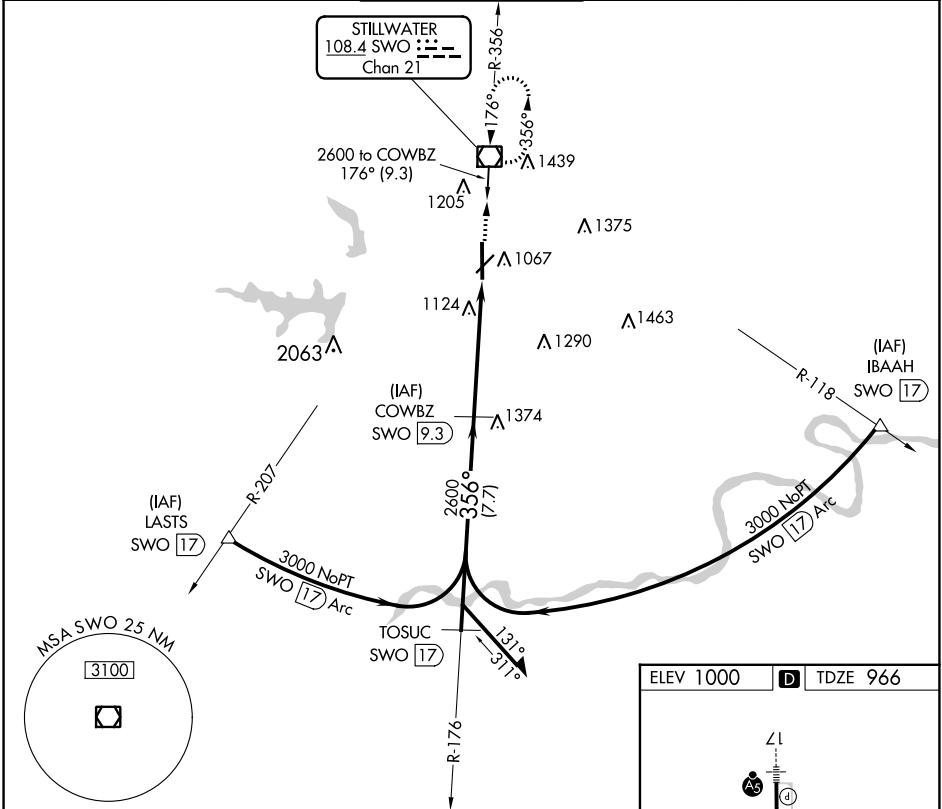
VOR/DME RWY 35

STILLWATER RGNL (SWO)

⚠ When local altimeter setting not received, use Ponca City Rgnl altimeter setting and increase all MDA 80 feet; S-35 Cats C/D visibility ¼ mile; Circling Cat D visibility ½ mile. VDP NA with Ponca City altimeter setting.

MISSED APPROACH: Climb to 2600 direct SWO VOR/DME and hold.

| | | | | |
|------------------------|--|--|-------------------------|-------------------------|
| ASOS 135.725 | KANSAS CITY CENTER 127.8 319.1 | STILLWATER TOWER ★ 125.35 (CTAF) 0 | GND CON 121.6 | UNICOM 122.95 |
|------------------------|--|--|-------------------------|-------------------------|



| CATEGORY | A | B | C | D |
|-----------------|-----------------------|-----------------------|-------------------------|-------------------------|
| S-35 | 1380-1 | 414 (400-1) | 1380-1¼ | 414 (400-1¼) |
| CIRCLING | 1420-1 420 (500-1) | 1460-1 460 (500-1) | 1520-1½ 520 (600-1½) | 1740-2¼ 740 (800-2¼) |

SC-1, 22 FEB 2024 to 21 MAR 2024

SC-1, 22 FEB 2024 to 21 MAR 2024