


LOC/DME I-VKG 111.5 Chan 52	APP CRS 146°	Rwy Idg TDZE Apt Elev 6148 705 705
--	------------------------	--

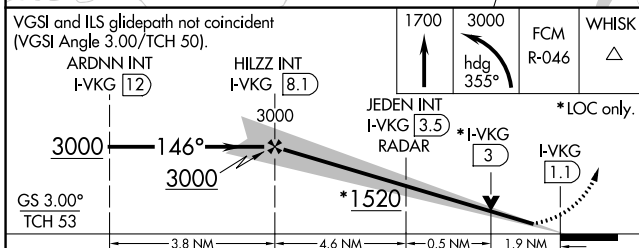
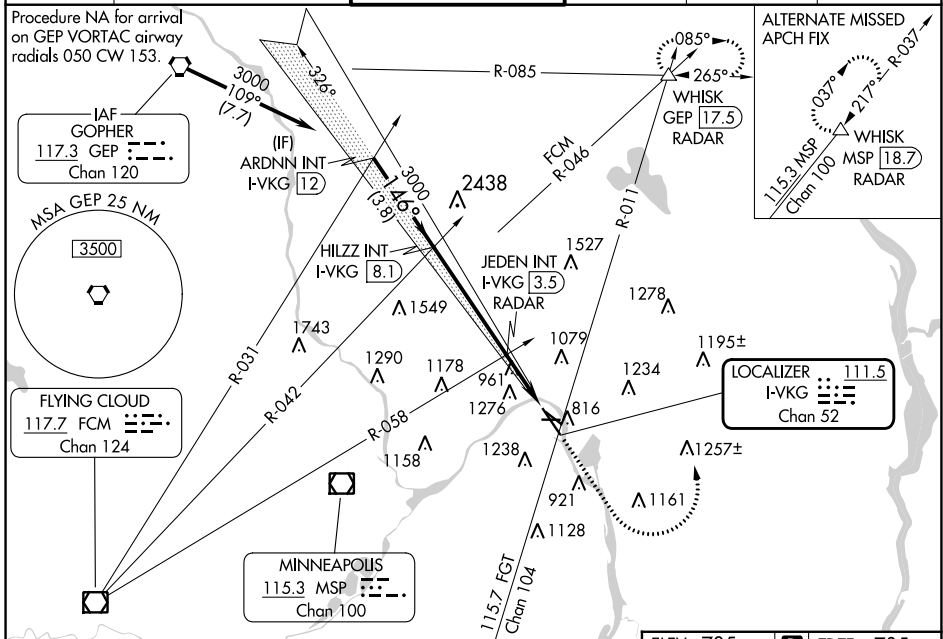
ILS or LOC RWY 14

ST PAUL DOWNTOWN HOLMAN FLD (STP)

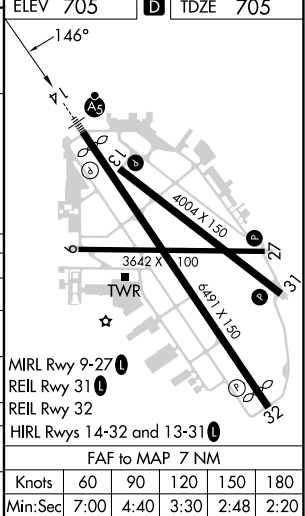
⚠ Inop table does not apply to S-ILS 14. Rwy 14 helicopter visibility reduction below RVR 4000 NA. For inop ALS, increase S-LOC 14 Cat A visibility to RVR 5500, Cat B visibility to RVR 6000, and Cat C/D visibility to 2½ SM.

MALS  MISSED APPROACH: Climb to 1700 then climbing left turn to 3000 on heading 355° and on FCM VOR/DME R-046 to WHISK INT/GEOP 17.5 DME/RADAR and hold.

ATIS 118.35	MINNEAPOLIS APP CON 121.2 335.65	ST. PAUL TOWER ★ 119.1 (CTAF) 257.8	GND CON 121.675	CLNC DEL 121.675	UNICOM 122.95
-----------------------	--	---	---------------------------	----------------------------	-------------------------



CATEGORY	A	B	C	D
S-ILS 14	955/40 250 (300-¾)			
S-LOC 14	1520/40	815 (900-¾)	1520-1⅞	815 (900-1⅞)
C CIRCLING	1580-1¼	875 (900-1¼)	1580-2½	875 (900-2½)
JEDEN FIX MINIMUMS				
S-LOC 14	1360/40	655 (700-¾)	1360-1⅓	655 (700-1⅓)
C CIRCLING	1580-1¼	875 (900-1¼)	1580-2½	875 (900-2½)



NC-1, 22 FEB 2024 to 21 MAR 2024

NC-1, 22 FEB 2024 to 21 MAR 2024

LOC/DME I-BAO 111.5 Chan 52	APP CRS 326°	Rwy Idg TDZE Apt Elev	6109 704 705
--	------------------------	-----------------------------	---

ILS or LOC RWY 32

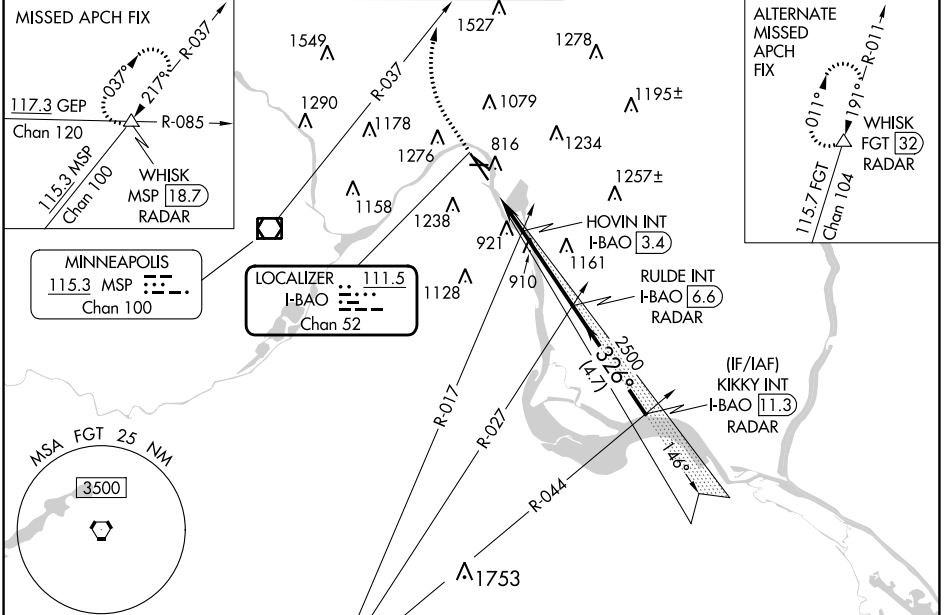
ST PAUL DOWNTOWN HOLMAN FLD (STP)

DME or RADAR required. RADAR required for procedure entry.

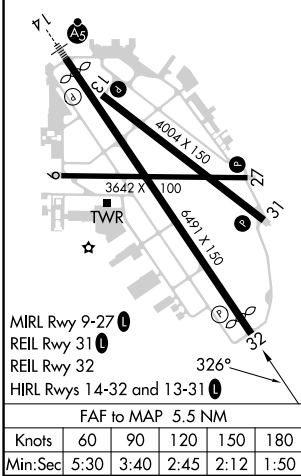
⚠ Rwy 32 helicopter visibility reduction below RVR 4000 NA. Inop table does not apply to S-ILS 32 all Cats and S-LOC all Cats. HOVIN FIX MINIMUMS: Inop table does not apply to Cats A/B. For inop ALS, increase Cats C/D visibility to 1 3/8 SM.

MISSED APPROACH: Climb to 1300 then climbing right turn to 4000 on heading 010° and MSP R-037 to WHISK INT/MSP 18.7 DME/RADAR and hold.

ATIS 118.35	MINNEAPOLIS APP CON 121.2 335.65	ST. PAUL TOWER * 119.1 (CTAF) 0 257.8	GND CON 121.675	CLNC DEL 121.675	UNICOM 122.95
-----------------------	--	---	---------------------------	----------------------------	-------------------------



ELEV 705	D	TDZE 704
----------	----------	----------



1300	4000	MSP R-037	WHISK	RULDE INT I-BAO 6.6 RADAR	KIKKY INT I-BAO 11.3 RADAR
*LOC only		I-BAO 1.1	*I-BAO 2.6	HOVIN INT I-BAO 3.4	2500
1460*		1460		326°	2500
-1.5 NM		-0.8 NM	3.2 NM	4.7 NM	GS 3.00° TCH 40
CATEGORY	A	B	C	D	
S-ILS 32	1011/50 307 (400-1)				
S-LOC 32	1460/55 756 (800-1)	1460/60 756 (800-1 1/4)	1460-2	756 (800-2)	
C CIRCLING	1580-1 1/4	875 (900-1 1/4)	1580-2 1/2	875 (900-2 1/2)	
HOVIN FIX MINIMUMS					
S-LOC 32	1220/55	516 (600-1)	1220-1 1/4	516 (600-1 1/4)	
C CIRCLING	1580-1 1/4	875 (900-1 1/4)	1580-2 1/2	875 (900-2 3/4)	

NC-1, 22 FEB 2024 to 21 MAR 2024

NC-1, 22 FEB 2024 to 21 MAR 2024

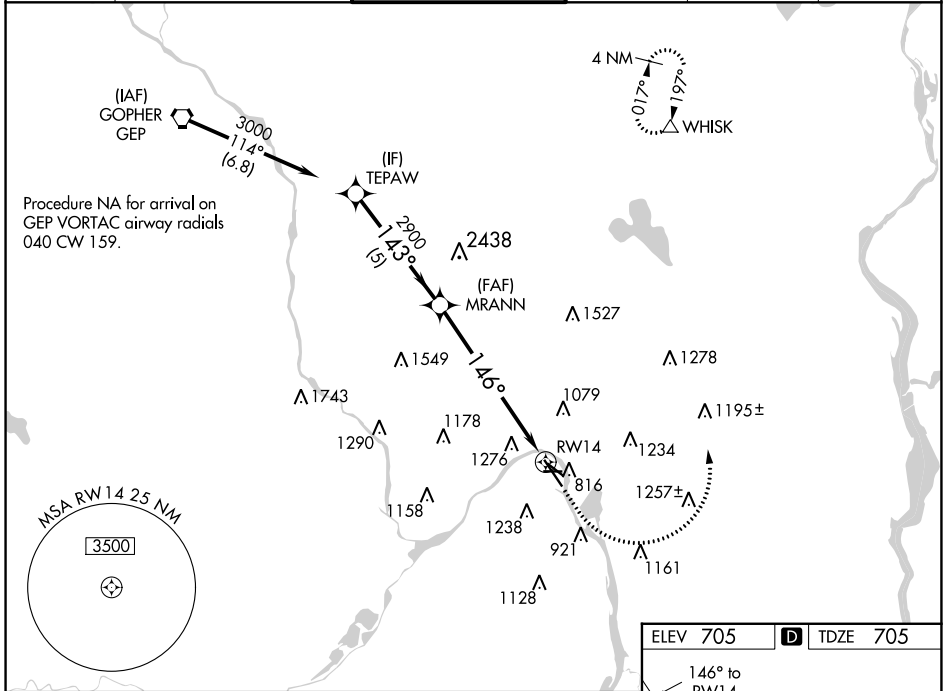
WAAS CH 62828 W14A	APP CRS 146°	Rwy Idg TDZE Apt Elev	6148 705 705
--	------------------------	-----------------------------	---

RNAV (GPS) RWY 14

ST PAUL DOWNTOWN HOLMAN FLD (STP)

	For uncompensated Baro-VNAV systems, LNAV/VNAV NA below -21°C (-5°F) or above 54°C (130°F). Rwy 14 helicopter visibility reduction below 3/4 SM NA. DME/DME RNP-0.3 NA. For inop MALSR, increase LNAV Cats C and D to 2 1/2 SM.	MALSR 	MISSED APPROACH: (Do not exceed 250K until WHISK) Climb to 1700 then climbing left turn to 3000 direct WHISK and hold.

ATIS 118.35	MINNEAPOLIS APP CON 121.2 335.65	ST. PAUL TOWER ★ 119.1(CTAF) 0 257.8	GND CON 121.675	CLNC DEL 121.675	UNICOM 122.95
-----------------------	--	--	---------------------------	----------------------------	-------------------------

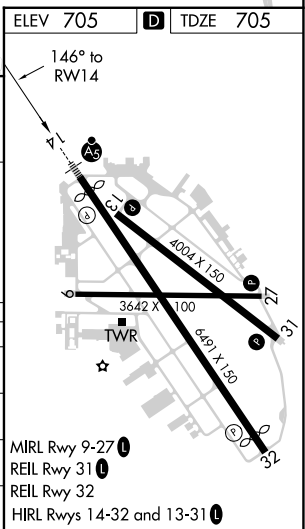


Procedure NA for arrival on GEP VORTAC airway radials 040 CW 159.

MSA RWY 14 25 NM
3500

VGSI and RNAV glidepath not coincident (VGSI Angle 3.00/TCH 50).

TEPAW	MRANN	1700	3000	WHISK
3000	2900	↑	↶	△
GP 3.00° TCH 42	2900	*LNAV only.		
5 NM	4.4 NM	2.4 NM	RWY 14	
CATEGORY	A	B	C	D
LPV DA	955/40		250 (300-3/4)	
LNAV/VNAV DA	1511-2 1/2		806 (900-2 1/2)	
LNAV MDA	1520/40	815 (900-3/4)	1520-1 7/8	815 (900-1 7/8)
CIRCLING	1580-1 1/4	875 (900-1 1/4)	1580-2 1/2 875 (900-2 1/2)	1580-2 3/4 875 (900-2 3/4)



NC-1, 22 FEB 2024 to 21 MAR 2024

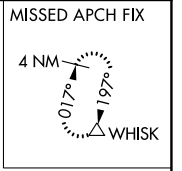
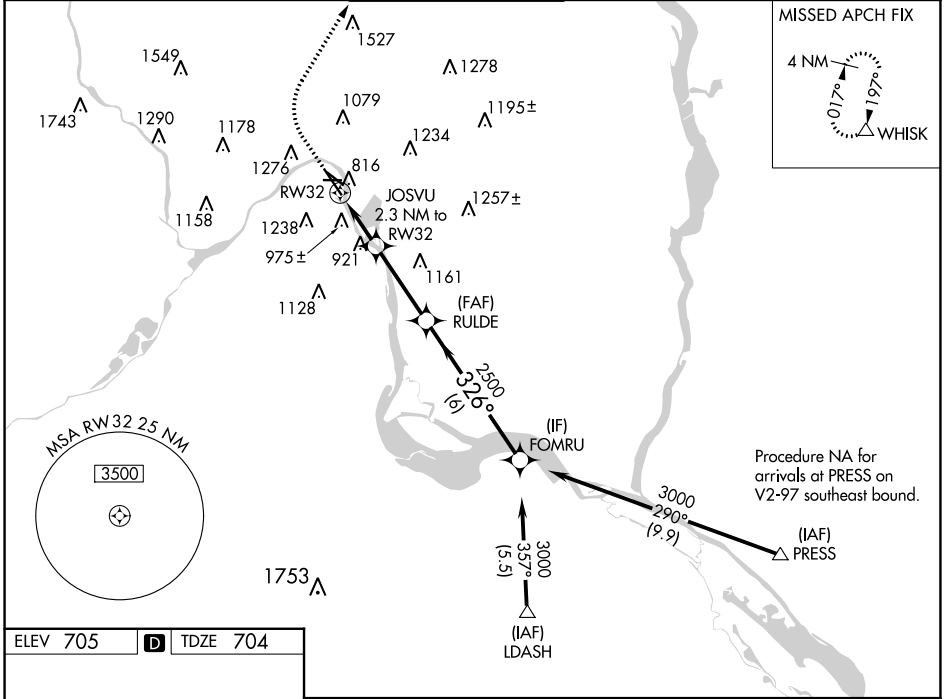
NC-1, 22 FEB 2024 to 21 MAR 2024

WAAS CH 50123 W32A	APP CRS 326°	Rwy Idg TDZE 6109 704 Apt Elev 705
--	------------------------	--

RNAV (GPS) RWY 32

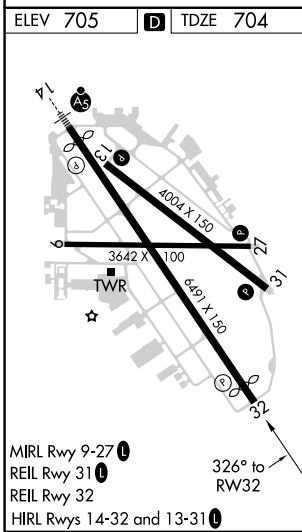
ST PAUL DOWNTOWN HOLMAN FLD (STP)

RNP APCH-GPS		<p>▽ Rwy 32 helicopter visibility reduction below 3/4 SM NA. ▲ For uncompensated Baro-VNAV systems, LNAV/VNAV NA below -21°C or above 54°C.</p>		<p>MISSED APPROACH: Climb to 1400 then climbing right turn to 3000 direct WHISK and hold.</p>	
ATIS 118.35	MINNEAPOLIS APP CON 121.2 335.65	ST. PAUL TOWER ★ 119.1(CTAF) 257.8	GND CON 121.675	CLNC DEL 121.675	UNICOM 122.95



NC-1, 22 FEB 2024 to 21 MAR 2024

NC-1, 22 FEB 2024 to 21 MAR 2024



1400	3000	WHISK			
			JOSVU 2.3 NM to RW32	RULDE 2500	FOMRU 3000
			1.6 NM to RW32	2500	GP 3.00° TCH 40
			1.6 NM	0.7 NM	3.2 NM
			1460	2500	326°
CATEGORY	A	B	C	D	
LPV DA	1031/50		327 (400-1)		
LNAV/VNAV DA	1258-1 5/8		554 (600-1 1/8)		
LNAV MDA	1240/55	536 (600-1)	1240-1 1/2	536 (600-1 1/2)	
C CIRCLING	1580-1 1/4	875 (900-1 1/4)	1580-2 1/2	875 (900-2 1/2)	1580-2 3/4
			875 (900-2 3/4)		