

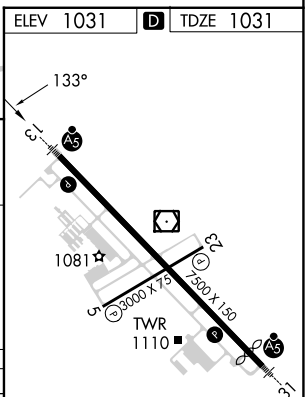
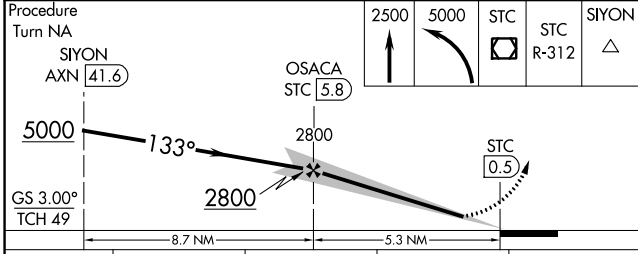
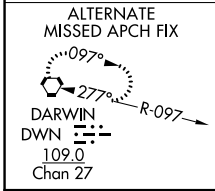
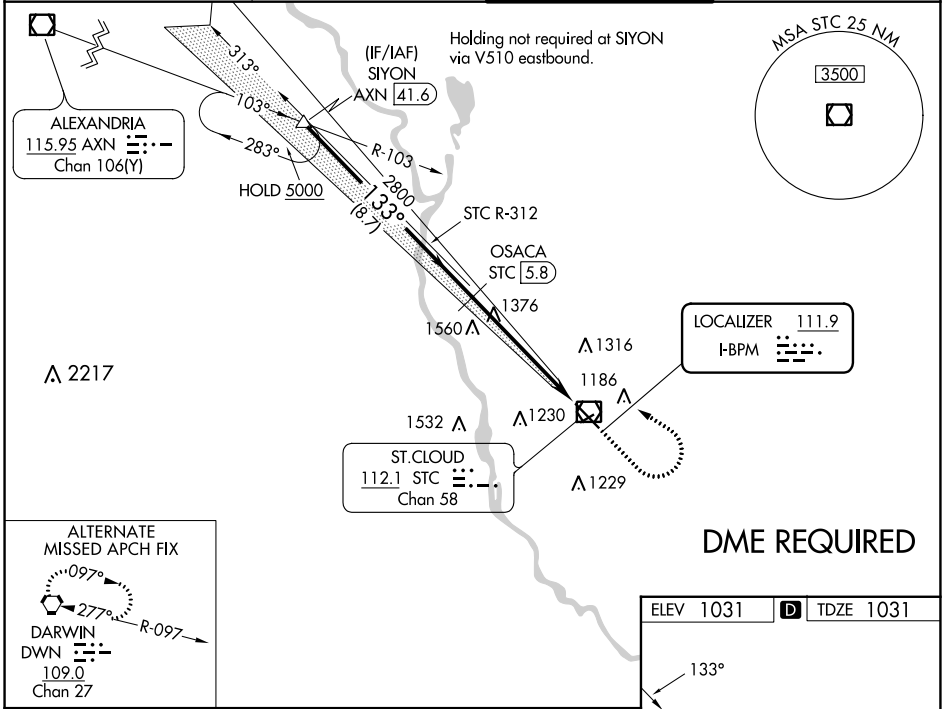
LOC I-BPM 111.9	APP CRS 133°	Rwy Idg TDZE Apt Elev	7500 1031 1031
---------------------------	------------------------	-----------------------------	---

ILS or LOC/DME RWY 13

ST CLOUD RGNL (STC)

DME required.		MALSR 	MISSED APPROACH: Climb to 2500 then climbing left turn to 5000 direct STC VOR/DME and via STC VOR/DME R-312 to SIYON/AXN VOR/DME 41.6 DME and hold.
DME from STC VOR/DME. Simultaneous reception of I-BPM and STC DME required. When local altimeter setting not received, use Little Falls altimeter setting and increase DA to 1307 and all MDAs 80 feet. Increase S-LOC 13 Cats C/D and Circling Cats C/D visibility ¼ mile. For inoperative MALSR when using Little Falls altimeter setting, increase S-ILS 13 all Cats visibility ½ mile.			

ATIS 119.375	MINNEAPOLIS CENTER 121.05 235.775	ST. CLOUD TOWER * 118.25 (CTAF)	GND CON 123.75
------------------------	---	---	--------------------------



CATEGORY	A	B	C	D
S-ILS 13	1231-½		200 (200-½)	
S-LOC 13	1680-½	649 (700-½)	1680-1¼ 649 (700-1¼)	1680-1½ 649 (700-1½)
CIRCLING	1680-1	649 (700-1)	1680-1¾ 649 (700-1¾)	1860-2¾ 829 (900-2¾)

MIRL Rwy 5-23
HIRL Rwy 13-31

NC-1, 22 FEB 2024 to 21 MAR 2024

NC-1, 22 FEB 2024 to 21 MAR 2024

WAAS CH 82013 W13A	APP CRS 133°	Rwy Idg TDZE Apt Elev	7500 1031 1031
--	------------------------	-----------------------------	---

RNAV (GPS) RWY 13

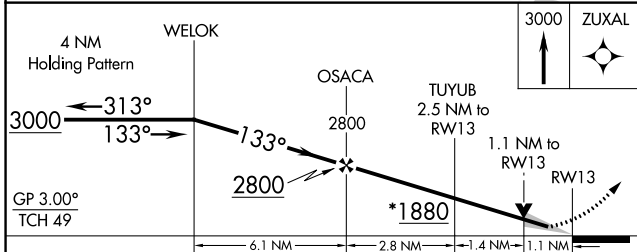
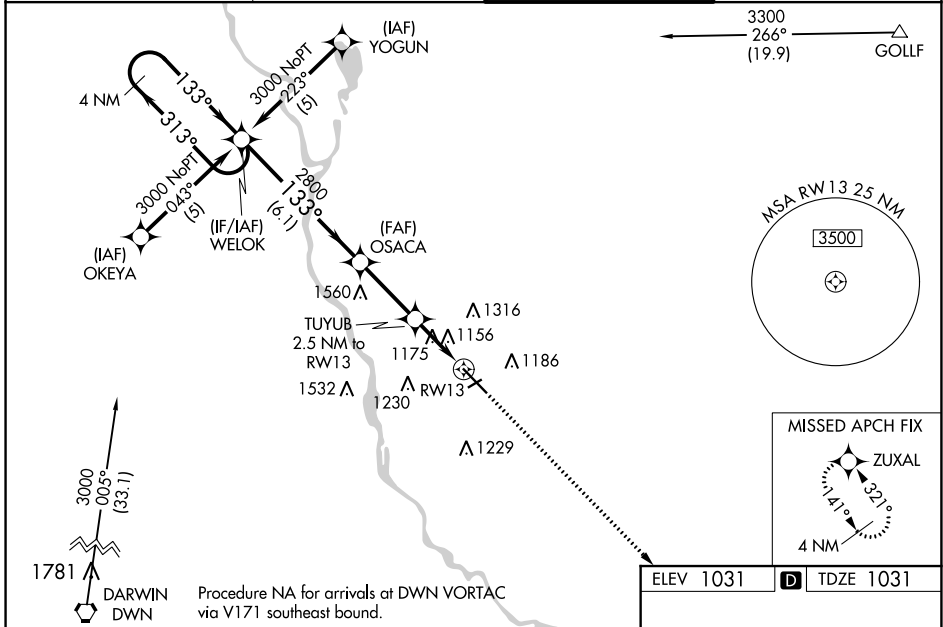
ST CLOUD RGNL (STC)

RNP APCH - GPS.

⚠ For uncompensated Baro-VNAV systems, LNAV/VNAV NA below -17°C or above 47°C. VDP and Baro-VNAV NA when using Little Falls altimeter setting. When local altimeter setting not received, use Little Falls altimeter setting; increase LPV DA to 1307 feet, LNAV/VNAV DA to 1531 feet and visibility LNAV/VNAV ¼ SM all Cats; increase all MDA 80 feet and visibility Circling Cat C and D ¼ SM. For inoperative MALS/R, increase LNAV Cat D visibility ¼ mile. For inop MALS/R when using Little Falls altimeter setting, increase LPV all Cats visibility ½ mile.

MALS/R 	MISSED APPROACH: Climb to 3000 direct ZUXAL and hold.
------------	--

ATIS 119.375	MINNEAPOLIS CENTER 121.05 235.775	ST. CLOUD TOWER ★ 118.25 (CTAF) 0	GND CON 123.75
------------------------	---	---	--------------------------



ELEV 1031	D TDZE 1031
-----------	--------------------

MIRL Rwy 5-23 **0**

HIRL Rwy 13-31 **0**

CATEGORY	A	B	C	D
LPV DA	1231-½		200 (200-½)	
LNAV/VNAV DA	1455-1		424 (500-1)	
LNAV MDA	1440-½	409 (500-½)	1440-¾ 409 (500-¾)	1440-1 409 (500-1)
CIRCLING	1500-1	469 (500-1)	1620-1½ 589 (600-1½)	1860-2¾ 829 (900-2¾)

NC-1, 22 FEB 2024 to 21 MAR 2024

NC-1, 22 FEB 2024 to 21 MAR 2024

APP CRS 236°	Rwy Idg 3000
	TDZE 1022
	Apt Elev 1031

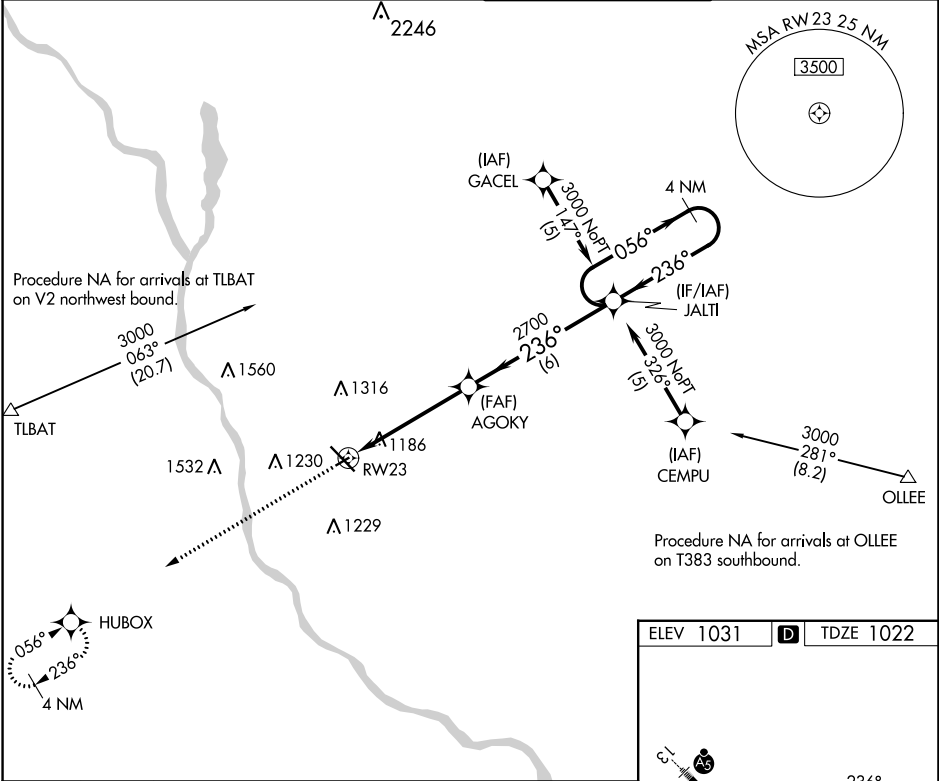
RNAV (GPS) RWY 23

ST CLOUD RGNL (STC)

⚠ Rwy 23 helicopter visibility reduction below 3/4 SM NA. DME/DME RNP-0.3 NA. VDP NA when using Little Falls altimeter setting. When local altimeter setting not received, use Little Falls altimeter setting and increase all MDA 80 feet and increase LNAV Cat C visibility 3/8 SM and Circling Cat C visibility 1/4 SM.

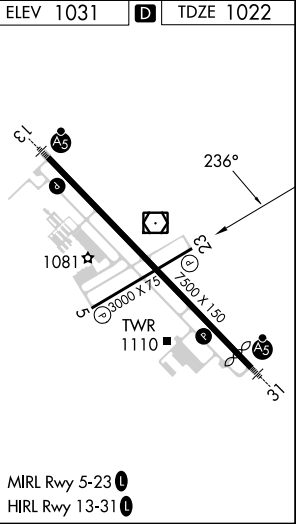
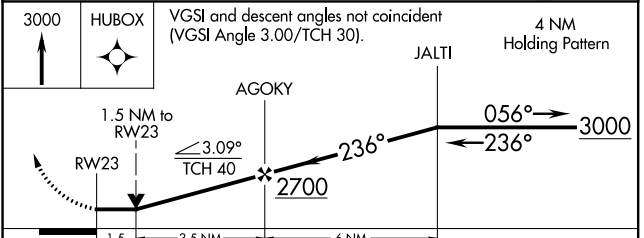
MISSED APPROACH: Climb to 3000 direct HUBOX and hold.

ATIS 119.375	MINNEAPOLIS CENTER 121.05 235.775	ST. CLOUD TOWER ★ 118.25 (CTAF) 0	GND CON 123.75
------------------------	---	---	--------------------------



NC-1, 22 FEB 2024 to 21 MAR 2024

NC-1, 22 FEB 2024 to 21 MAR 2024



CATEGORY	A	B	C	D
LNAV MDA	1540-1	518 (600-1)	1540-1 3/8 518 (600-1 3/8)	NA
CIRCLING	1540-1	509 (600-1)	1620-1 1/2 589 (600-1 1/2)	NA

WAAS CH 61213 W31A	APP CRS 313°	Rwy Idg TDZE Apt Elev	7000 1020 1031
--	------------------------	-----------------------------	---


RNAV (GPS) RWY 31

ST CLOUD RGNL (STC)

RNP APCH - GPS

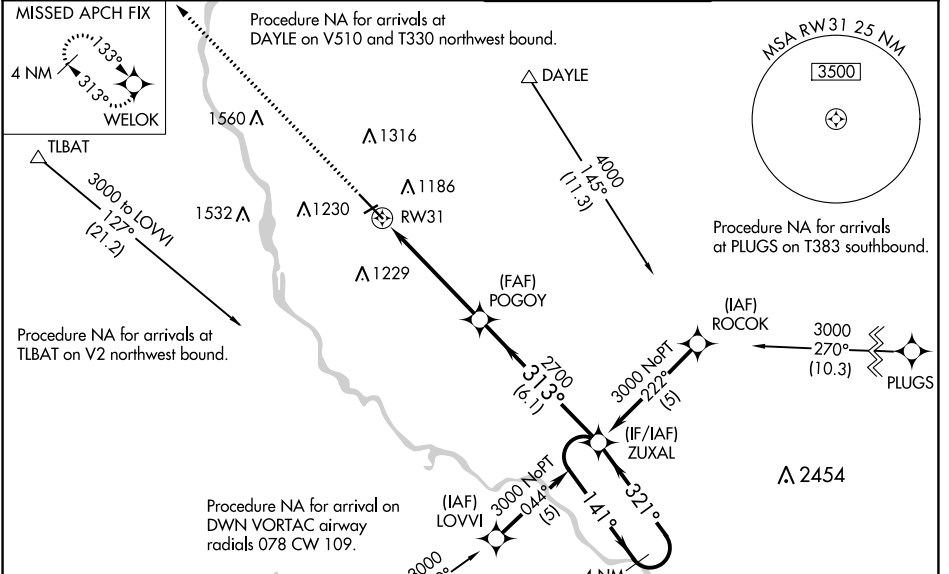
⚠ When local altimeter setting not received, use Little Falls altimeter setting: increase LPV DA to 1296 feet, LNAV/VNAV DA to 1455 feet and visibility LNAV/VNAV ¼ SM all Cats; increase all MDA 80 feet and visibility LNAV Cat C and D and Circling Cat C and D ¼ SM. For inop ALS when using Little Falls altimeter setting, increase LPV all Cats visibility to ¾ SM and LNAV Cat C/D visibility to 1¾ SM. For uncompensated Baro-VNAV systems, LNAV/VNAV NA below -17°C or above 46°C. Baro-VNAV and VDP NA when using Little Falls altimeter setting.

MALSR

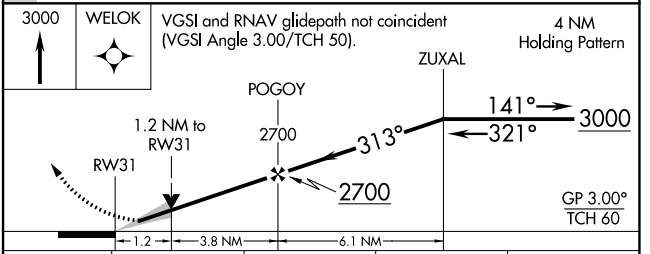
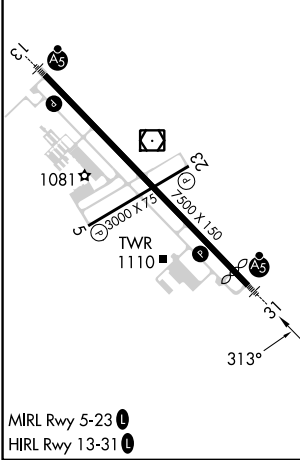


MISSED APPROACH:
Climb to 3000 direct
WELOK and hold.

ATIS 119.375	MINNEAPOLIS CENTER 121.05 235.775	ST. CLOUD TOWER ★ 118.25 (CTAF) 0	GND CON 123.75
------------------------	---	---	--------------------------



ELEV 1031	D	TDZE 1020
-----------	----------	-----------



CATEGORY	A	B	C	D
LPV DA		1220-½	200 (200-½)	
LNAV/VNAV DA		1379-¾	359 (400-¾)	
LNAV MDA	1460-½	440 (500-½)	1460-¾	440 (500-¾)
CIRCLING	1500-1	469 (500-1)	1620-1½ 589 (600-1½)	1860-2¾ 829 (900-2¾)

NC-1, 22 FEB 2024 to 21 MAR 2024

NC-1, 22 FEB 2024 to 21 MAR 2024

APP CRS	Rwy Idg	3000
056°	TDZE	1022
	Apt Elev	1031

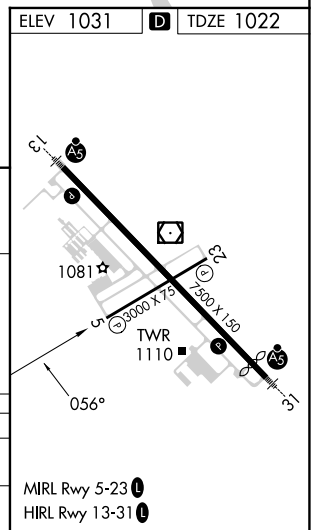
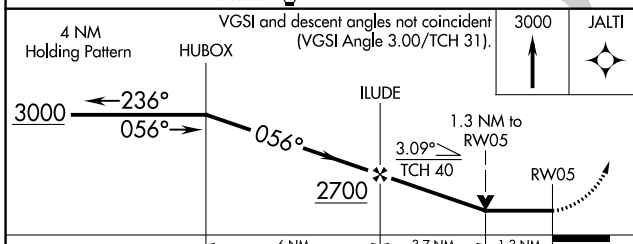
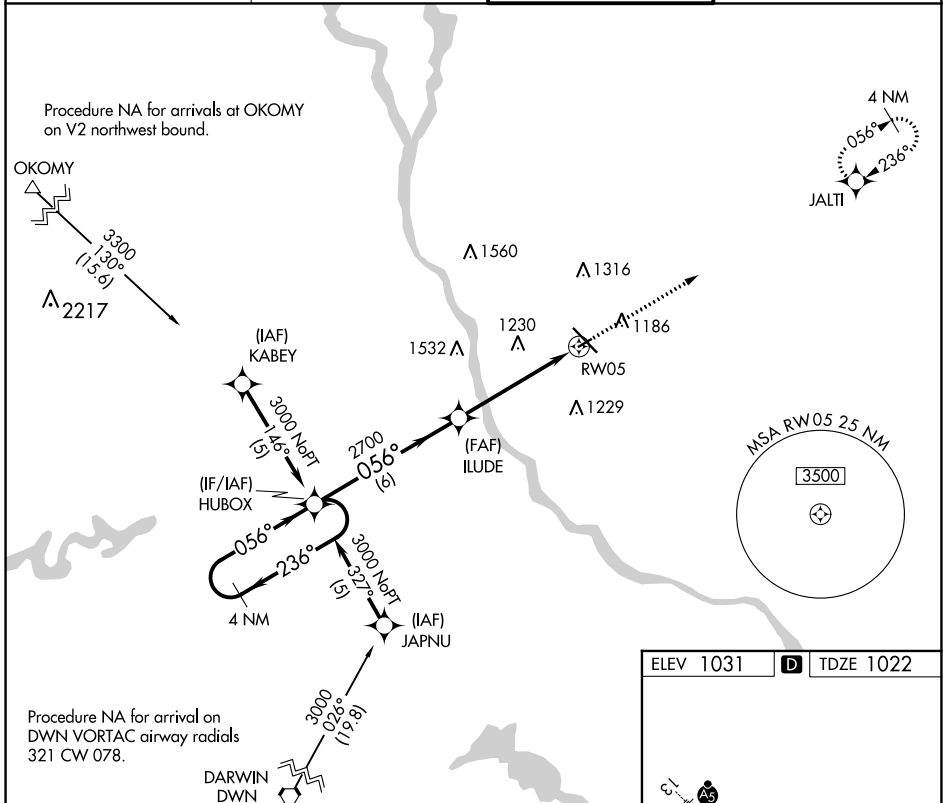
RNAV (GPS) RWY 5

ST CLOUD RGNL (STC)

▼ Rwy 5 helicopter visibility reduction below ¼ SM NA. DME/DME RNP-0.3 NA. VDP NA when using Little Falls altimeter setting. When local altimeter setting not received, use Little Falls altimeter setting: increase all MDA 80 feet and visibility LNAV Cat C ¼ SM and Circling Cat C ¼ SM.

▲ MISSED APPROACH: Climb to 3000 direct JALTI and hold.

ATIS 119.375	MINNEAPOLIS CENTER 121.05 235.775	ST. CLOUD TOWER ★ 118.25 (CTAF) 0	GND CON 123.75
------------------------	---	---	--------------------------



CATEGORY	A	B	C	D
LNAV MDA	1480-1	458 (500-1)	1480-1 ⅓ 458 (500-1 ⅓)	NA
CIRCLING	1500-1	469 (500-1)	1620-1 ½ 589 (600-1 ½)	NA

NC-1, 22 FEB 2024 to 21 MAR 2024

NC-1, 22 FEB 2024 to 21 MAR 2024

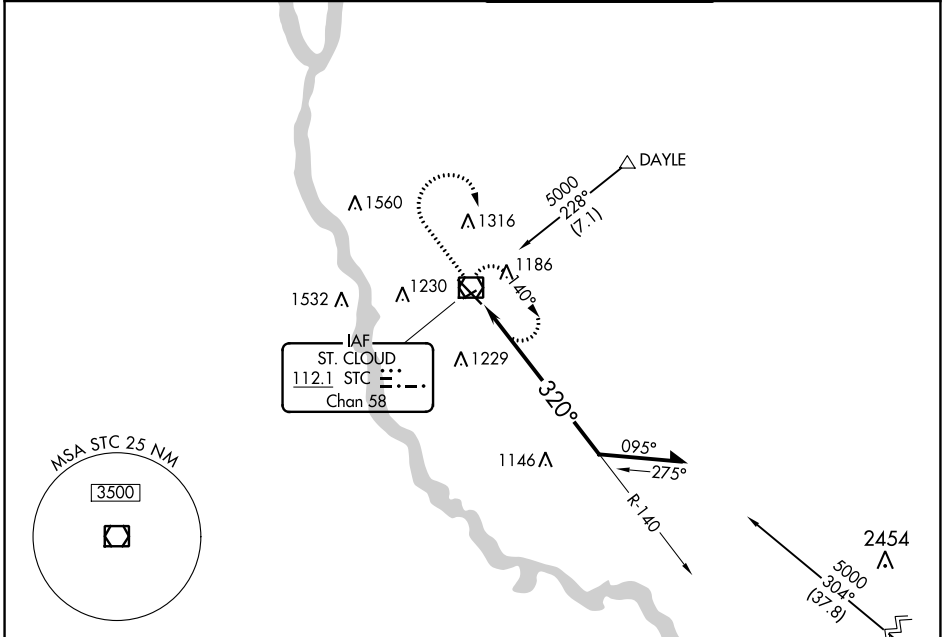
VOR/DME STC 112.1 Chan 58	APP CRS 320°	Rwy Idg TDZE 7000 1020	Apt Elev 1031
---	------------------------	--	-------------------------

VOR RWY 31

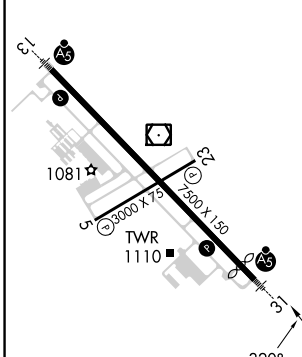
ST CLOUD RGNL (STC)

For inop ALS, increase S-31 Cat C and D visibility to 1 3/8 SM.	MALSR MISSED APPROACH: Climb to 2700 then right turn direct STC VOR/DME and hold.
---	---

ATIS 119.375	MINNEAPOLIS CENTER 121.05 235.775	ST. CLOUD TOWER ★ 118.25 (CTAF)	GND CON 123.75
------------------------	---	---	--------------------------



ELEV 1031	D	TDZE 1020
-----------	----------	-----------

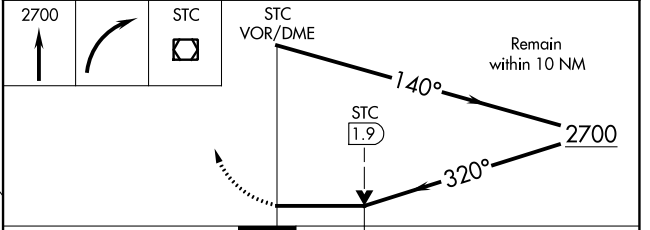


MIRL Rwy 5-23

HIRL Rwy 13-31

Procedure NA for arrival on GEP VORTAC airway radials 260 CW 352.

GOPHER
117.3 GEP
Chan 120



CATEGORY	A	B	C	D
S-31	1460-1/2	440 (500-1/2)	1460-3/4 440 (500-3/4)	1460-1 440 (500-1)
CIRCLING	1500-1	469 (500-1)	1620-1 1/2 589 (600-1 1/2)	1860-2 3/4 829 (900-2 3/4)

NC-1, 22 FEB 2024 to 21 MAR 2024

NC-1, 22 FEB 2024 to 21 MAR 2024