

LOC I-SLN 108.9	APP CRS 353°	Rwy Idg 12300
		TDZE 1271
		Apt Elev 1288

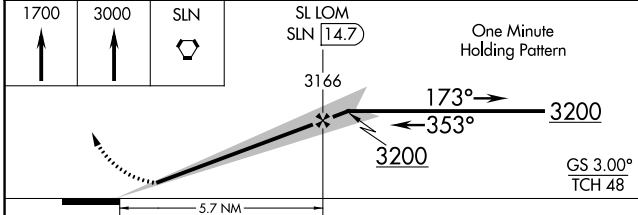
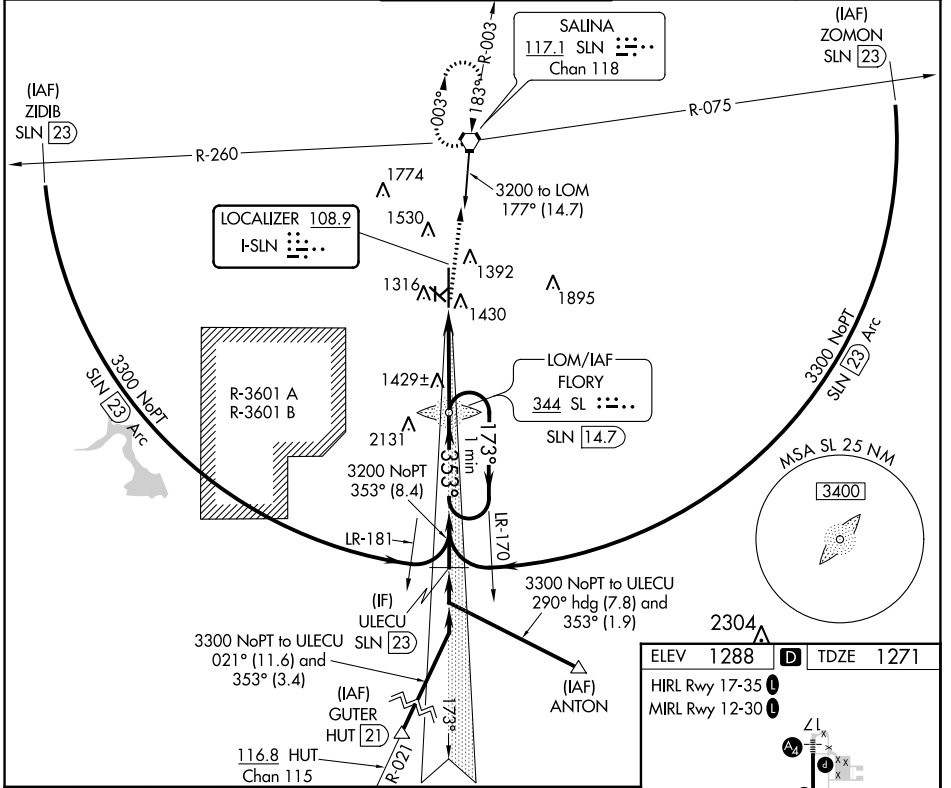
ILS or LOC RWY 35

SALINA RGNL (SLN)

⚠ For inop ALS, increase S-LOC 35 Cat D visibility to 1 1/2 SM and Cat E visibility to 1 1/2 SM. For inop ALS, increase S-ILS 35 Cat E visibility to 3/4 SM. Circling NA for Cats D and E southwest of Rwy 12-30.

MALS MISSED APPROACH: Climb to 1700 then climb to 3000 direct SLN VORTAC and hold.

ATIS 120.15	KANSAS CITY CENTER 134.9 363.2	SALINA TOWER ★ 119.3 (CTAF) 257.7	GND CON 121.9 360.8	UNICOM 122.95
-----------------------	--	---	-------------------------------	-------------------------



CATEGORY	A	B	C	D	E
S-ILS 35	1471-1/2 200 (200-1/2)				
S-LOC 35	1680-1/2 409 (400-1/2)				
CIRCLING	1820-1 532 (600-1)	1840-1 552 (600-1)	1860-1 1/2 572 (600-1 1/2)	1860-2 572 (600-2)	1920-2 1/4 632 (700-2 1/4)

ELEV 1288	D	TDZE 1271
HIRL Rwy 17-35		MIRL Rwy 12-30

FAF to MAP 5.7 NM					
Knots	60	90	120	150	180
Min:Sec	5:42	3:48	2:51	2:17	1:54

NC-2, 22 FEB 2024 to 21 MAR 2024


NC-2, 22 FEB 2024 to 21 MAR 2024

LOM SL 344	APP CRS 353°	Rwy Idg TDZE Apt Elev 12300 1271 1288
----------------------	------------------------	---

NDB RWY 35

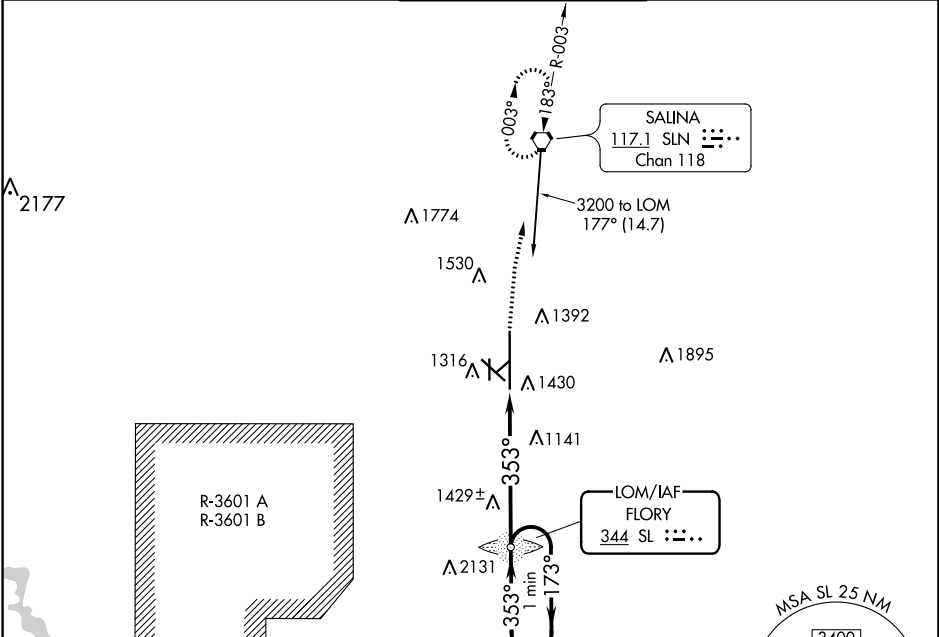
SALINA RGNL (SLN)

⚠ Cat D Circling NA southwest of runway 12-30. For inop ALS, increase S-35 Cats A/B visibility to 1 SM and Cats C/D to 1½ SM.

MALSR 

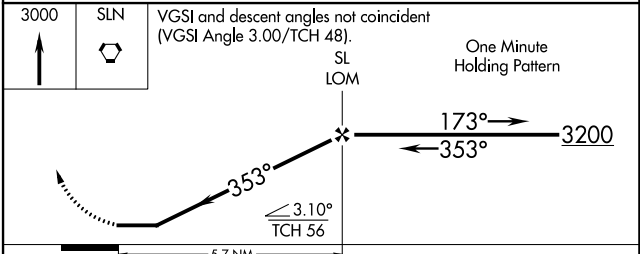
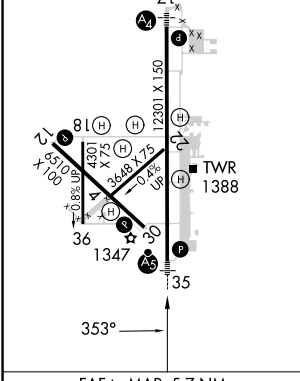
MISSED APPROACH: Climb to 3000 direct SLN VORTAC and hold.

ATIS 120.15	KANSAS CITY CENTER 134.9 363.2	SALINA TOWER ★ 119.3 (CTAF) 257.7	GND CON 121.9 360.8	UNICOM 122.95
-----------------------	--	---	-------------------------------	-------------------------



ELEV 1288 **D** TDZE 1271

HIRL Rwy 17-35 **L**
MIRL Rwy 12-30 **L**



CATEGORY	A	B	C	D
S-35	1760-¾ 489 (500-¾)	489 (500-¾)	1760-1 489 (500-1)	1760-1¼ 489 (500-1¼)
CIRCLING	1820-1 532 (600-1)	1840-1 552 (600-1)	1860-1½ 572 (600-1½)	1860-2 572 (600-2)

FAF to MAP 5.7 NM

Knots	60	90	120	150	180
Min:Sec	5:42	3:48	2:51	2:17	1:54

NC-2, 22 FEB 2024 to 21 MAR 2024

NC-2, 22 FEB 2024 to 21 MAR 2024

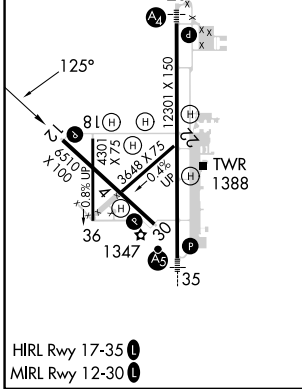
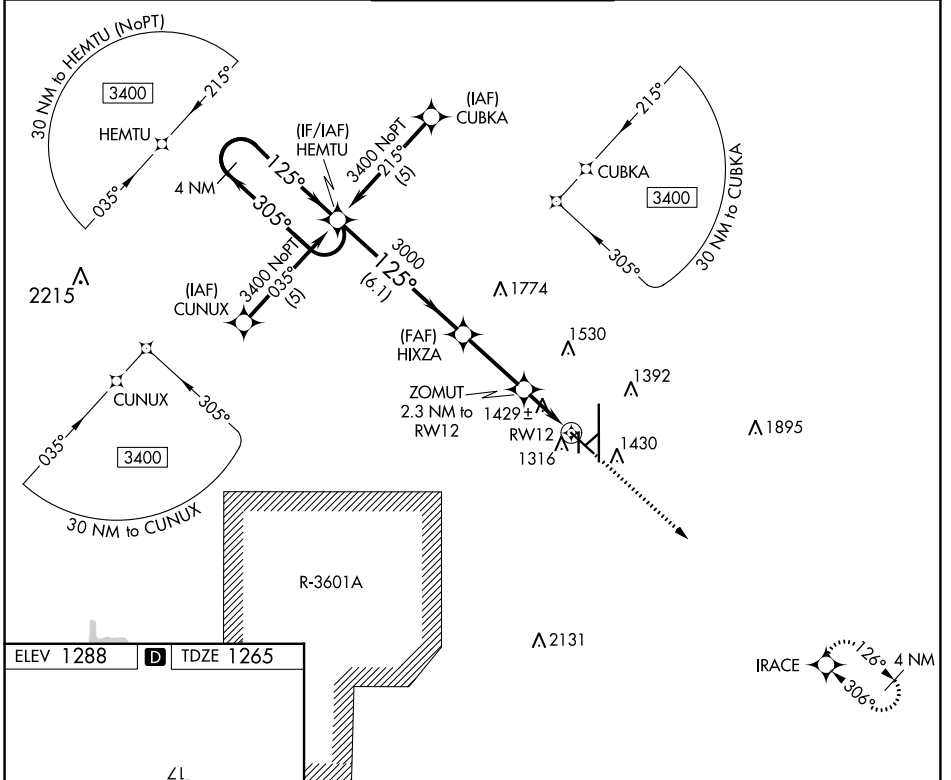
APP CRS 125°	Rwy Idg TDZE Apt Elev	6510 1265 1288
------------------------	-----------------------------	---

RNAV (GPS) RWY 12

SALINA RGNL (SLN)

⚠ Circling NA for Cat D southwest of runway 12-30. DME/DME RNP-0.3 NA.	MISSED APPROACH: Climb to 3400 direct IRACE and hold.
--	---

ATIS 120.15	KANSAS CITY CENTER 134.9 363.2	SALINA TOWER ★ 119.3 (CTAF) 0 257.7	GND CON 121.9 360.8	UNICOM 122.95
-----------------------	--	---	-------------------------------	-------------------------



4 NM Holding Pattern	HEMTU	HIXZA	ZOMUT	IRACE
	3400 ← 305°	125° →	3000	3400 ↑
HEMTU to HIXZA: 6.1 NM		HIXZA to ZOMUT: 3 NM	ZOMUT to RW12: 1 NM	RW12 to RW12: 1.3 NM
CATEGORY	A	B	C	D
LNAV MDA	1700-1	435 (500-1)	1700-1¼ 435 (500-1½)	1700-1½ 435 (500-1½)
CIRCLING	1820-1 532 (600-1)	1840-1 552 (600-1)	1860-1½ 572 (600-1½)	1860-2 572 (600-2)

NC-2, 22 FEB 2024 to 21 MAR 2024

NC-2, 22 FEB 2024 to 21 MAR 2024

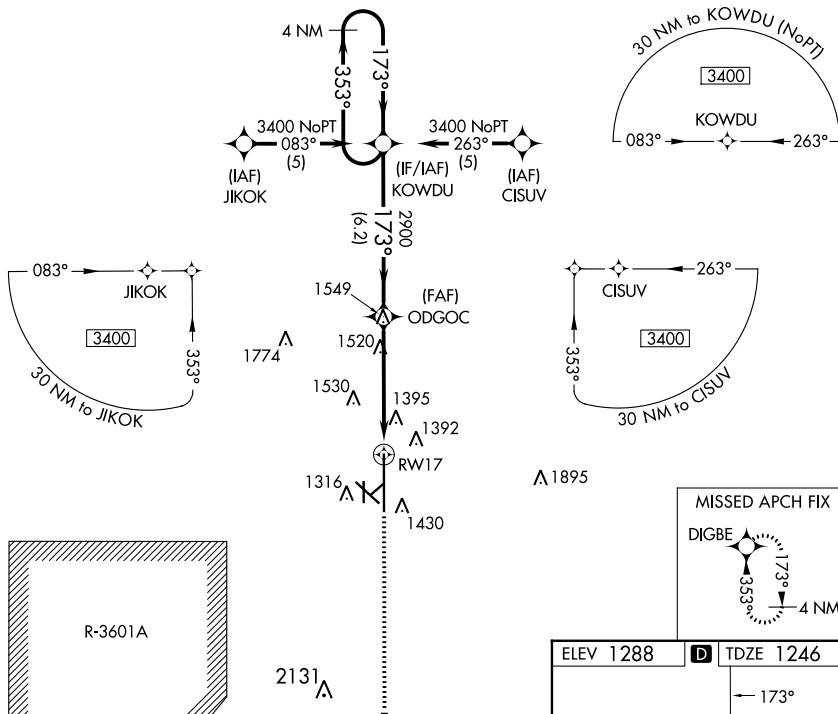
WAAS CH 70322 W17A	APP CRS 173°	Rwy ldg 12300 TDZE 1246 Apt Elev 1288
--	------------------------	--

RNAV (GPS) RWY 17

SALINA RGNL (SLN)

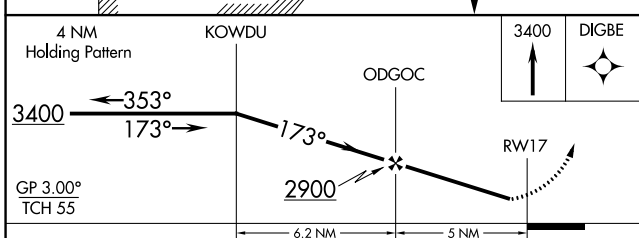
▽ DME/DME RNP-0.3 NA. Baro-VNAV NA below -17°C (2°F). Circling NA for Cat D southwest of Rwy 12-30. Inoperative table does not apply.	MALS 	MISSED APPROACH: Climb to 3400 direct DIGBE and hold.
--	----------	---

ATIS 120.15	KANSAS CITY CENTER 134.9 363.2	SALINA TOWER ★ 119.3 (CTAF) 257.7	GND CON 121.9 360.8	UNICOM 122.95
-----------------------	--	---	-------------------------------	-------------------------



NC-2, 22 FEB 2024 to 21 MAR 2024

NC-2, 22 FEB 2024 to 21 MAR 2024



ELEV 1288	D TDZE 1246

CATEGORY	A	B	C	D
LPV DA	1496-1 250 (300-1)			
LNAV/VNAV DA	1741-1¾ 495 (500-1¾)			
LNAV MDA	1780-1 534 (500-1)	1780-1½ 534 (500-1½)	1780-1¾ 534 (500-1¾)	
CIRCLING	1820-1¾ 532 (600-1¾)	1840-1¾ 552 (600-1¾)	1860-1¾ 572 (600-1¾)	1860-2 572 (600-2)

APP CRS 305°	Rwy Idg TDZE Apt Elev	6510 1273 1288
------------------------	-----------------------------	---

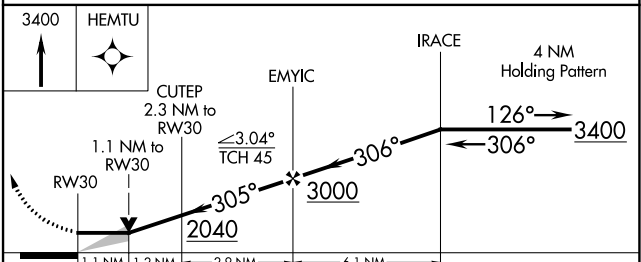
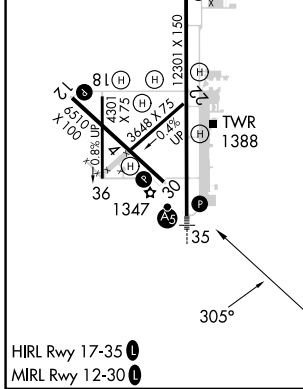
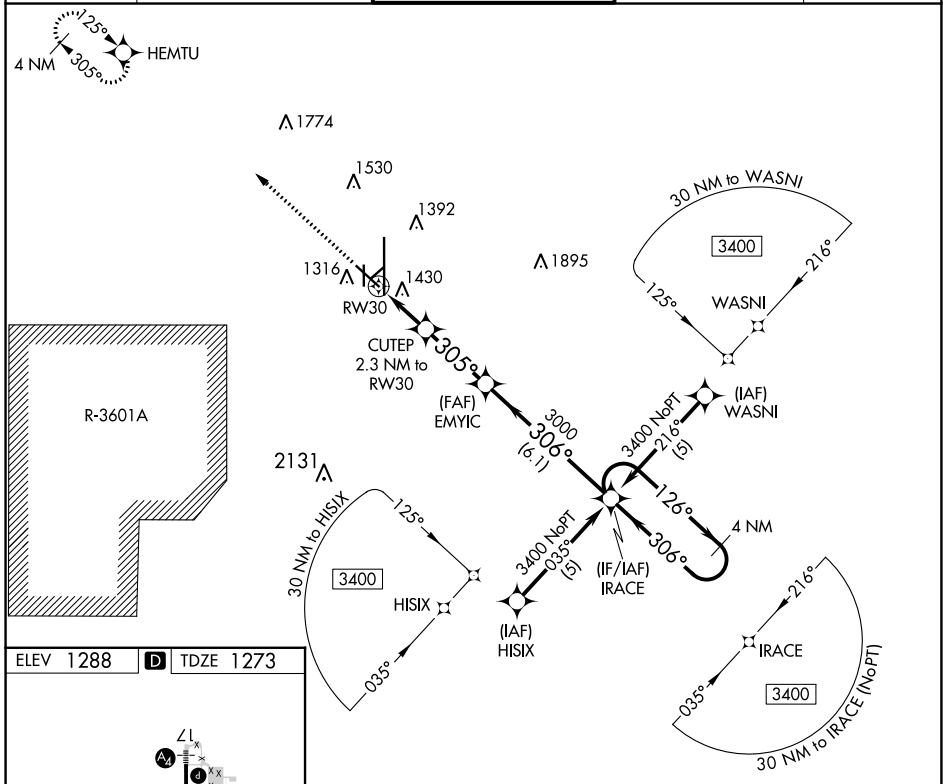
RNAV (GPS) RWY 30

SALINA RGNL (SLN)

⚠ Circling NA for Cat D southwest of runway 12-30.
⚠ DME/DME RNP-0.3 NA.

MISSED APPROACH: Climb to 3400 direct HEMTU and hold.

ATIS 120.15	KANSAS CITY CENTER 134.9 363.2	SALINA TOWER ★ 119.3 (CTAF) 0 257.7	GND CON 121.9 360.8	UNICOM 122.95
-----------------------	--	---	-------------------------------	-------------------------



CATEGORY	A	B	C	D
LNAV MDA	1680-1	407 (400-1)	1680-1½	407 (400-1½)
CIRCLING	1820-1 532 (600-1)	1840-1 552 (600-1)	1860-1½ 572 (600-1½)	1860-2 572 (600-2)


NC-2, 22 FEB 2024 to 21 MAR 2024

NC-2, 22 FEB 2024 to 21 MAR 2024

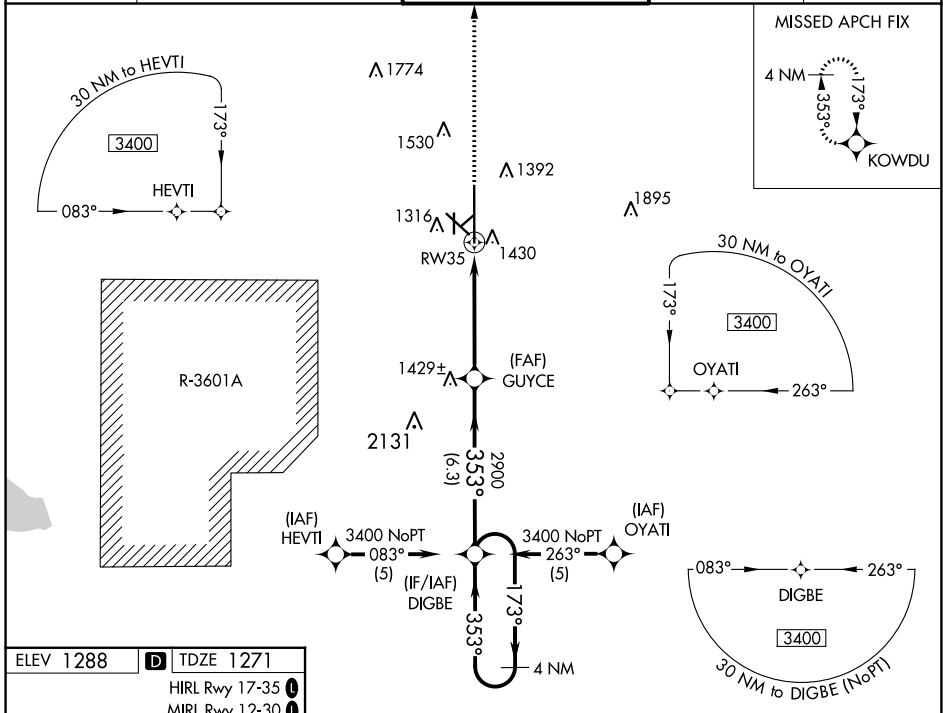
WAAS CH 77522 W35A	APP CRS 353°	Rwy ldg 12300 TDZE 1271 Apt Elev 1288
--	------------------------	--

RNAV (GPS) RWY 35

SALINA RGNL (SLN)

<p>▽ DME/DME RNP-0.3 NA. Baro-VNAV NA below -17°C (2°F). Circling NA for Cat D southwest of Rwy 12-30. For inoperative MALSR, increase LNAV Cat D visibility to 1¼ and LPV visibility all Cats to ¾.</p>	<p>MALSR </p>	<p>MISSED APPROACH: Climb to 3400 direct KOWDU and hold.</p>
---	--	--

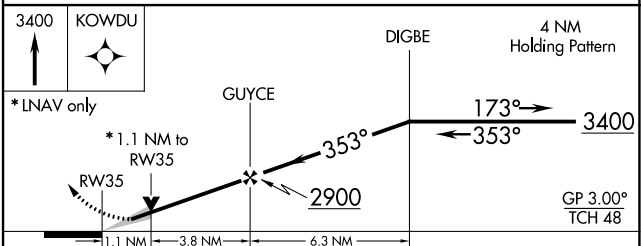
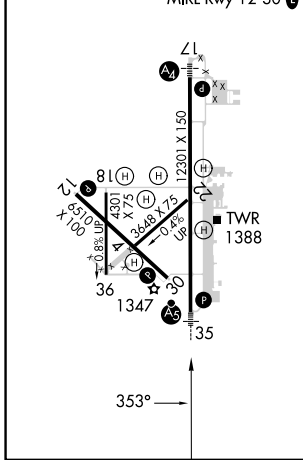
ATIS 120.15	KANSAS CITY CENTER 134.9 363.2	SALINA TOWER * 119.3 (CTAF) 0 257.7	GND CON 121.9 360.8	UNICOM 122.95
-----------------------	--	---	-------------------------------	-------------------------



NC-2, 22 FEB 2024 to 21 MAR 2024

NC-2, 22 FEB 2024 to 21 MAR 2024

ELEV 1288	D TDZE 1271
HIRL Rwy 17-35 	
MIRL Rwy 12-30 	



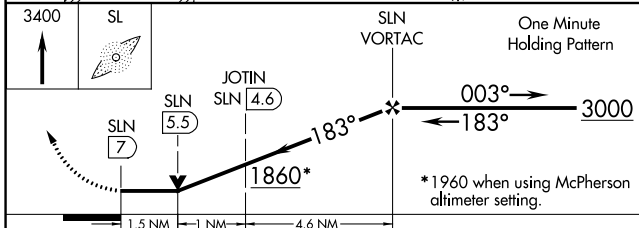
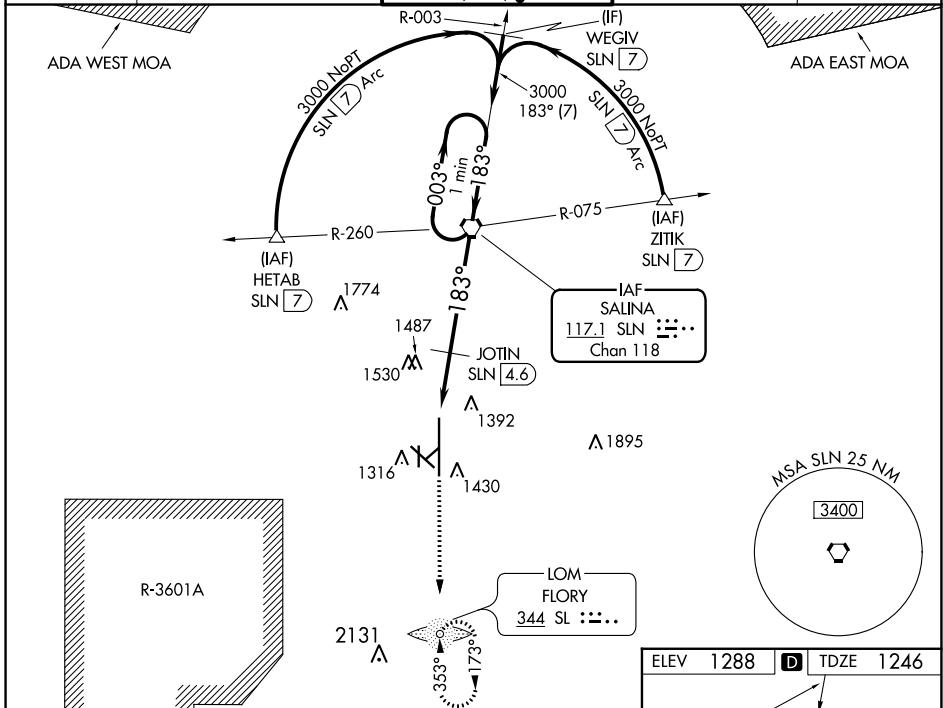
CATEGORY	A	B	C	D
LPV DA		1521-½	250 (300-½)	
LNAV/VNAV DA		1623-¾	352 (400-¾)	
LNAV MDA	1680-½	409 (400-½)	1680-¾ 409 (400-¾)	1680-1 409 (400-1)
CIRCLING	1820-1¼ 532 (600-1¼)	1840-1¼ 552 (600-1¼)	1860-1½ 572 (600-1½)	1860-2 572 (600-2)

VORTAC SLN 117.1 Chan 118	APP CRS 183°	Rwy Idg TDZE 1246 Apt Elev 1288	12300
---	------------------------	---	--------------

VOR RWY 17

SALINA RGNL (SLN)

<p>▽ Inoperative table does not apply to Cat C/D/E. ▲ Circling NA for Cat D/E southwest of Rwy 12-30. ADF required.</p>	<p>MALS</p>	<p>MISSED APPROACH: Climb to 3400 direct SL LOM and hold.</p>		
<p>ATIS 120.15</p>	<p>KANSAS CITY CENTER 134.9 363.2</p>	<p>SALINA TOWER * 119.3 (CTAF) 0 257.7</p>	<p>GND CON 121.9 360.8</p>	<p>UNICOM 122.95</p>



ELEV 1288	D TDZE 1246
<p>HIRL Rwy 17-35 ① MIRL Rwy 12-30 ①</p>	
<p>FAF to MAP 7 NM</p>	
Knots	60 90 120 150 180
Min:Sec	7:00 4:40 3:30 2:48 2:20

CATEGORY	A	B	C	D	E
S-17	1860-¾ 614 (600-¾)		1860-1¾ 614 (600-1¾)	1860-2 614 (600-2)	1860-2½ 614 (600-2½)
CIRCLING	1860-1 572 (600-1)		1860-1¾ 572 (600-1¾)	1860-2 572 (600-2)	1920-2½ 632 (700-2½)
JOTIN FIX MINIMUMS					
S-17	1760-¾ 514 (500-¾)		1760-1½ 514 (500-1½)	1760-1¾ 514 (500-1¾)	
CIRCLING	1820-1 532 (600-1)	1840-1 552 (600-1)	1860-1½ 572 (600-1½)	1860-2 572 (600-2)	1920-2½ 632 (700-2½)