

WAAS CH 62823 W21A	APP CRS 206°	Rwy Idg TDZE Apt Elev	5502 315 315
--	------------------------	-----------------------------	---

RNAV (GPS) RWY 21

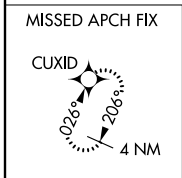
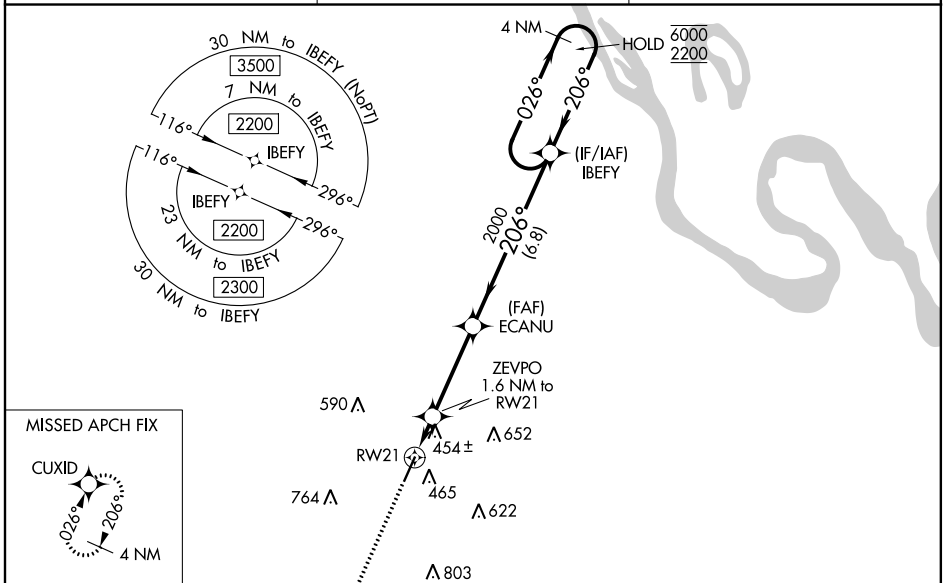
SIKESTON MEML MUNI (SIK)

RNP APCH.

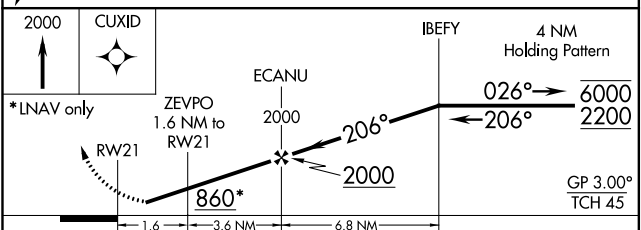
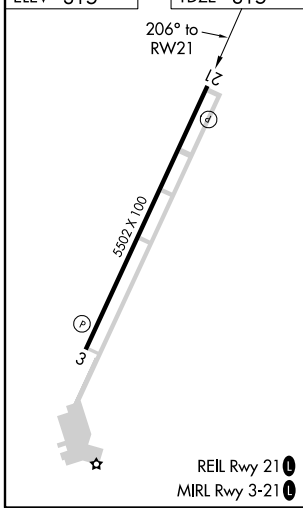
▽ Rwy 21 helicopter visibility reduction below 3/4 SM NA. Baro-VNAV NA when using Cape Girardeau altimeter setting. For uncompensated Baro-VNAV systems, LNAV/VNAV NA below -15°C or above 54°C. When local altimeter setting not received, use Cape Girardeau altimeter setting and increase all DA 49 feet and all MDA 60 feet. Increase LNAV and Circling Cat C/D visibility 1/4 SM.

MISSED APPROACH: Climb to 2000 direct CUXID and hold.

AWOS-3 119.175	MEMPHIS CENTER 133.65 292.15	UNICOM 122.8 (CTAF) 0
--------------------------	--	---------------------------------



ELEV 315	TDZE 315
----------	----------



CATEGORY	A	B	C	D
LPV DA	565-1 250 (300-1)			
LNAV/VNAV DA	761-1 3/8 446 (500-1 3/8)			
LNAV MDA	720-1	405 (500-1)	720-1 1/8	405 (500-1 1/8)
<input checked="" type="checkbox"/> CIRCLING	840-1 525 (600-1)	860-1 545 (600-1)	1080-2 1/4 765 (800-2 1/4)	1160-2 3/4 845 (900-2 3/4)

NC-3, 02 DEC 2021 to 30 DEC 2021

NC-3, 02 DEC 2021 to 30 DEC 2021

WAAS CH 86801 W03A	APP CRS 026°	Rwy Idg 5502 TDZE 315 Apt Elev 315
--	------------------------	---

RNAV (GPS) RWY 3

SIKESTON MEML MUNI (SIK)

RNP APCH.

▽ Rwy 3 helicopter visibility reduction below 3/4 SM NA. Baro-VNAV NA when using Cape Girardeau altimeter setting. For uncompensated Baro-VNAV systems, procedure NA below -15°C or above 54°C. When local altimeter setting not received, use Cape Girardeau altimeter setting and increase all DA 49 feet and all MDA 60 feet. Increase LNAV and Circling Cat C/D visibility 1/4 SM.

MISSED APPROACH: Climb to 2200 direct IBEFY and hold.

AWOS-3
119.175

MEMPHIS CENTER
133.65 292.15

UNICOM
122.8 (CTAF) 0

MISSED APCH FIX



△1058

590 **△**

△652

RW03 **△**

△465

△459±

△622

764 **△**

YEKUD

1.6 NM to RW03

(FAF) GAYEV

△803

1009 **△**

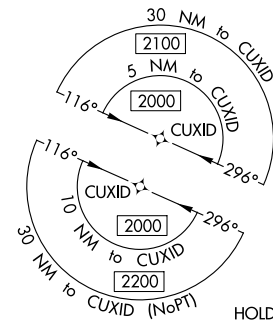
2000 **△**

026° (S)

(IF/IAF) CUXID

CUXID

4 NM



2200

IBEFY

↑

✧

YEKUD

*LNAV only

1.6 NM to RW03

RW03

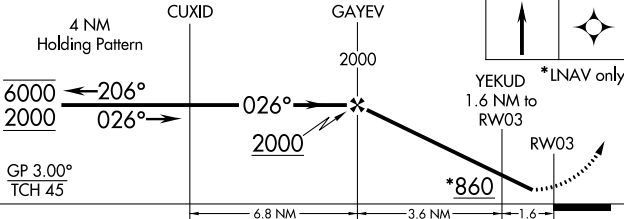
*860

↑

6.8 NM

3.6 NM

1.6



CATEGORY	A	B	C	D
LPV DA	629-1 314 (400-1)			
LNAV/VNAV DA	769-1 3/8 454 (500-1 3/8)			
LNAV MDA	720-1	405 (500-1)	720-1 1/8	405 (500-1 1/8)
CIRCLING	840-1	860-1	1080-2 1/4	1160-2 3/4
	525 (600-1)	545 (600-1)	765 (800-2 1/4)	845 (900-2 3/4)

