

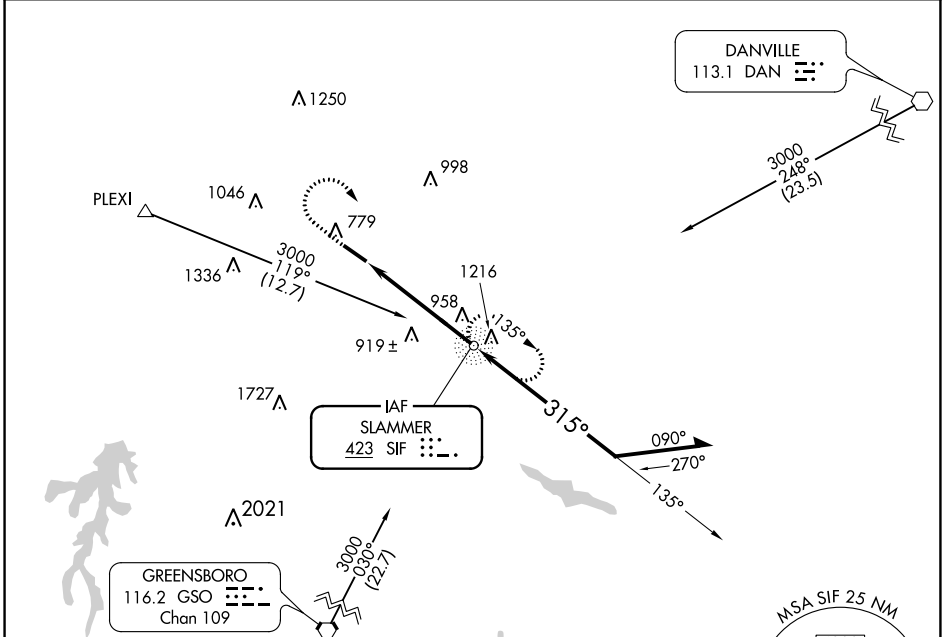
NDB SIF	APP CRS	Rwy Idg	5200
423	315°	TDZE	668
		Apt Elev	694

NDB RWY 31

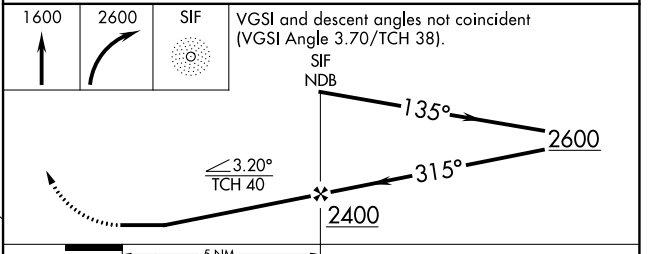
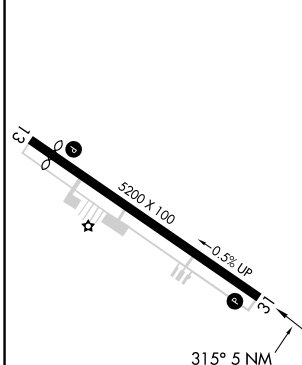
ROCKINGHAM COUNTY NC SHILOH (SIF')

▼ Rwy 31 helicopter visibility reduction below 1 SM NA. **▲** MISSED APPROACH: Climb to 1600 then climbing right turn to 2600 direct SIF NDB and hold.

AWOS-3 119.775	GREENSBORO APP CON 124.35 269.225	UNICOM 122.8 (CTAF) 0
--------------------------	---------------------------------------------	---------------------------------



ELEV 694	TDZE 668
----------	----------



CATEGORY	A	B	C	D
S-31	1220-1	552 (600-1)	1220-1½ 552 (600-1½)	1220-1¾ 552 (600-1¾)
CIRCLING	1280-1 586 (600-1)	1320-1 626 (700-1)	1360-1¾ 666 (700-1¾)	1420-2¼ 726 (800-2¼)

SE-2, 09 SEP 2021 to 07 OCT 2021

SE-2, 09 SEP 2021 to 07 OCT 2021

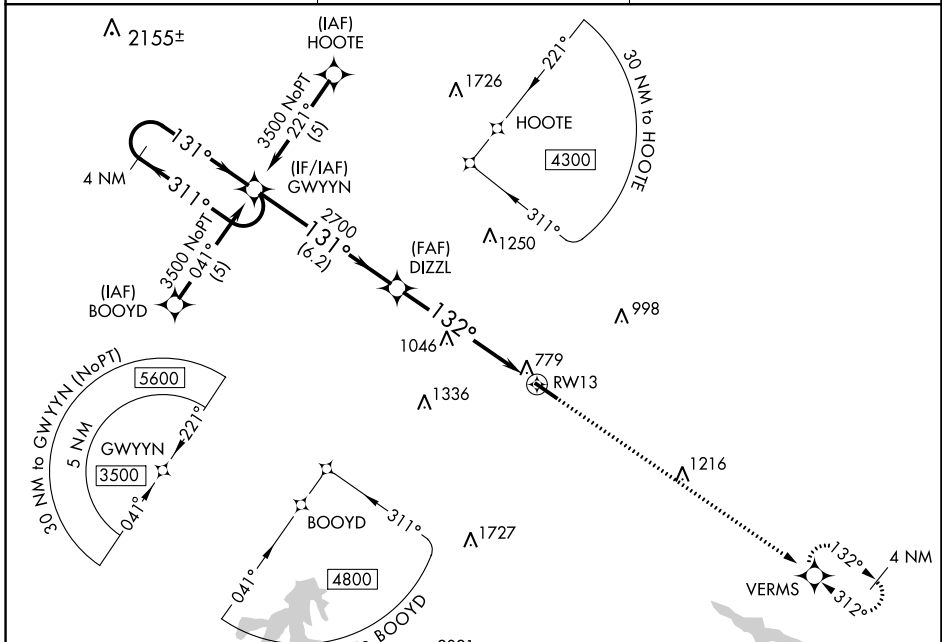
APP CRS	Rwy Idg	4700
132°	TDZE	691
	Apt Elev	694

RNAV (GPS) RWY 13

ROCKINGHAM COUNTY NC SHILOH (SIF')

RNP APCH.
 ▼ Rwy 13 helicopter visibility reduction below 1 SM NA.
 ▲ Procedure NA at night.
 MISSED APPROACH: Climb to 3600 direct VERMS and hold.

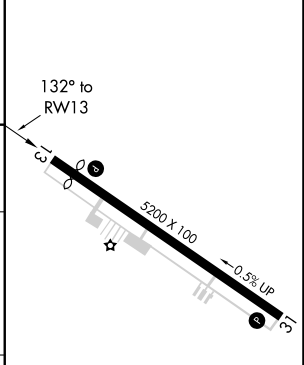
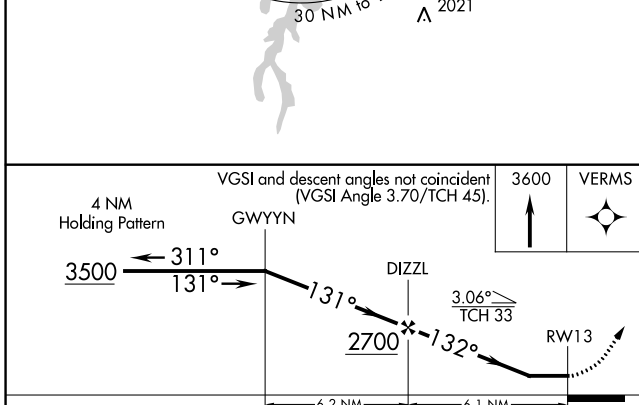
AWOS-3 119.775	GREENSBORO APP CON 124.35 269.225	UNICOM 122.8 (CTAF) 1
--------------------------	---------------------------------------------	---------------------------------



SE-2, 09 SEP 2021 to 07 OCT 2021

SE-2, 09 SEP 2021 to 07 OCT 2021

ELEV 694	TDZE 691
----------	----------



CATEGORY	A	B	C	D
LNVA MDA	1300-1	609 (700-1)	1300-1¼ 609 (700-1¼)	1300-2 609 (700-2)
CIRCLING	1300-1 606 (700-1)	1320-1 626 (700-1)	1360-1¼ 666 (700-1¼)	1420-2¼ 726 (800-2¼)

REIL Rwy 13 and 31 1
 HIRL Rwy 13-31 1

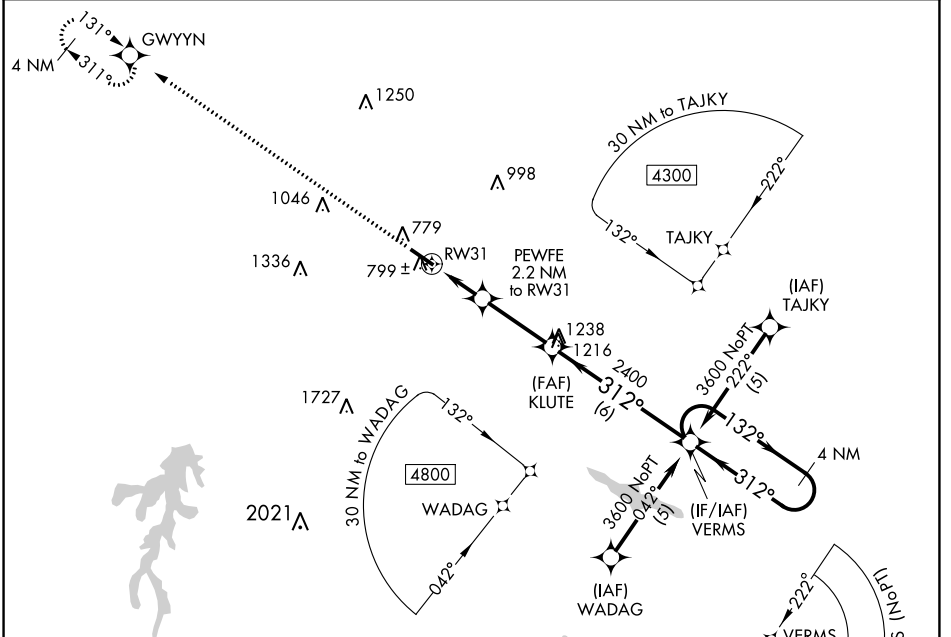
APP CRS	Rwy Idg	5200
312°	TDZE	668
	Apt Elev	694

RNAV (GPS) RWY 31

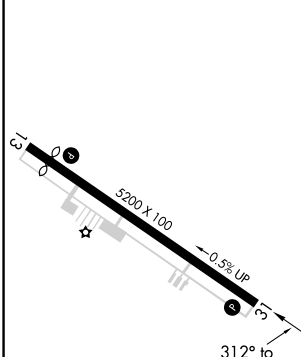
ROCKINGHAM COUNTY NC SHILOH (SIF')

RNP APCH.	MISSED APPROACH: Climb to 3500 direct GWYYN and hold.
Rwy 31 helicopter visibility reduction below 1 SM NA.	

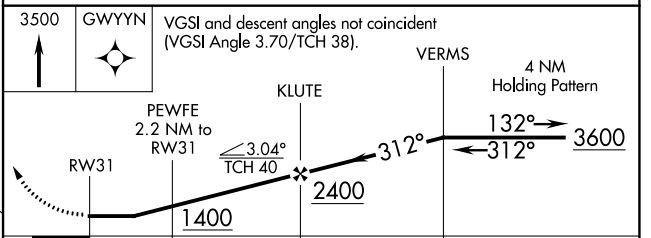
AWOS-3 119.775	GREENSBORO APP CON 124.35 269.225	UNICOM 122.8 (CTAF) 0
--------------------------	---------------------------------------------	---------------------------------



ELEV	694	TDZE	668
------	------------	------	------------



REIL Rwy 13 and 31 0
HIRL Rwy 13-31 0



CATEGORY	A	B	C	D
LNAV MDA	1060-1 392 (400-1)			1060-1¼ 392 (400-1¼)
CIRCLING	1280-1 586 (600-1)	1320-1 626 (700-1)	1360-1¾ 666 (700-1¾)	1420-2¼ 726 (800-2¼)

SE-2, 09 SEP 2021 to 07 OCT 2021

SE-2, 09 SEP 2021 to 07 OCT 2021

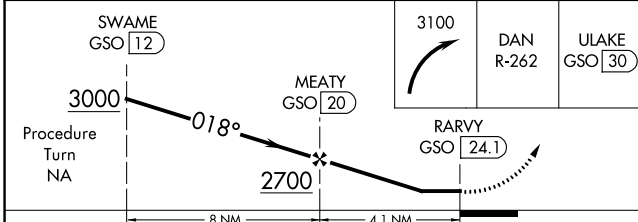
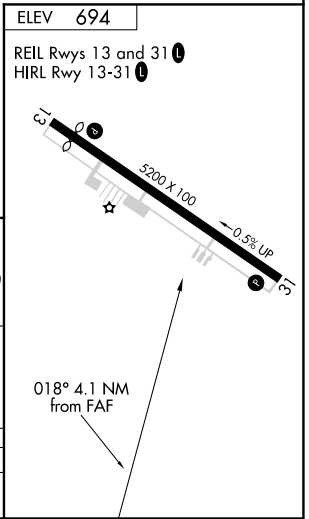
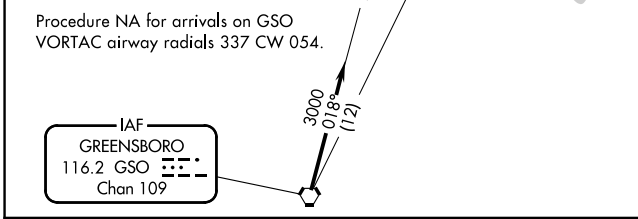
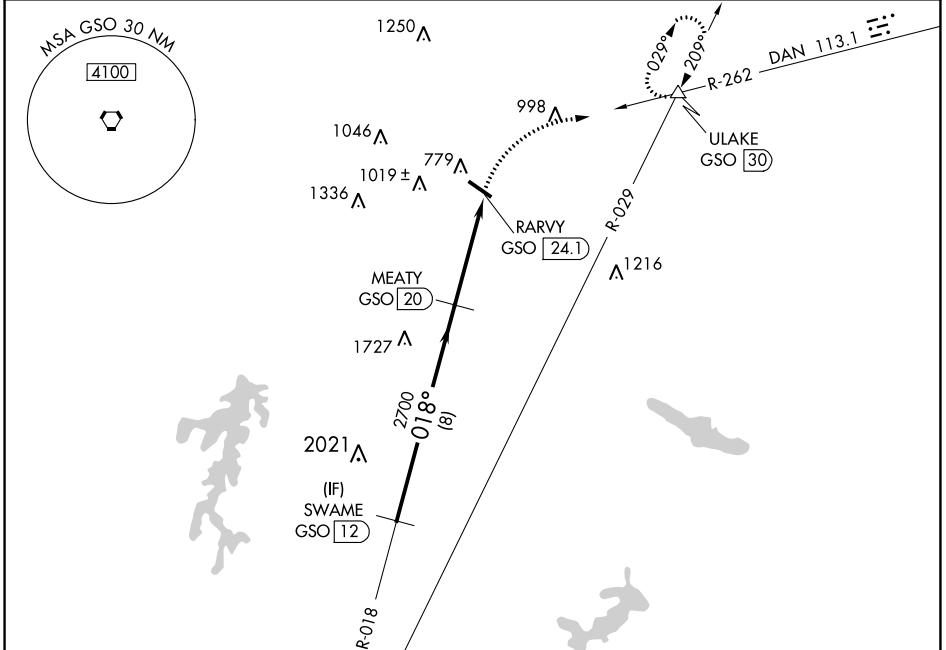
VORTAC GSO 116.2 Chan 109	APP CRS 018°	Rwy Idg TDZE Apt Elev N/A N/A 694
-----------------------------------------------	------------------------	--------------------------------------------------------------------

VOR/DME-A

ROCKINGHAM COUNTY NC SHILOH (SIF')

<p>NA</p> <p>Helicopter visibility reduction NA. Procedure NA at night.</p>	<p>MISSED APPROACH: Climbing right turn to 3100 via DAN VOR R-262 to ULAKE/GSO 30 DME and hold.</p>
----------------------------------------------------------------------------------------	-----------------------------------------------------------------------------------------------------

<p>AWOS-3 119.775</p>	<p>GREENSBORO APP CON 124.35 269.225</p>	<p>UNICOM 122.8 (CTAF)</p>
----------------------------------	-----------------------------------------------------	---------------------------------------



CATEGORY	A	B	C	D
CIRCLING	1400-1 706 (800-1)	1400-1¼ 706 (800-1¼)	1400-2 706 (800-2)	1420-2¼ 726 (800-2¼)

SE-2, 09 SEP 2021 to 07 OCT 2021

SE-2, 09 SEP 2021 to 07 OCT 2021