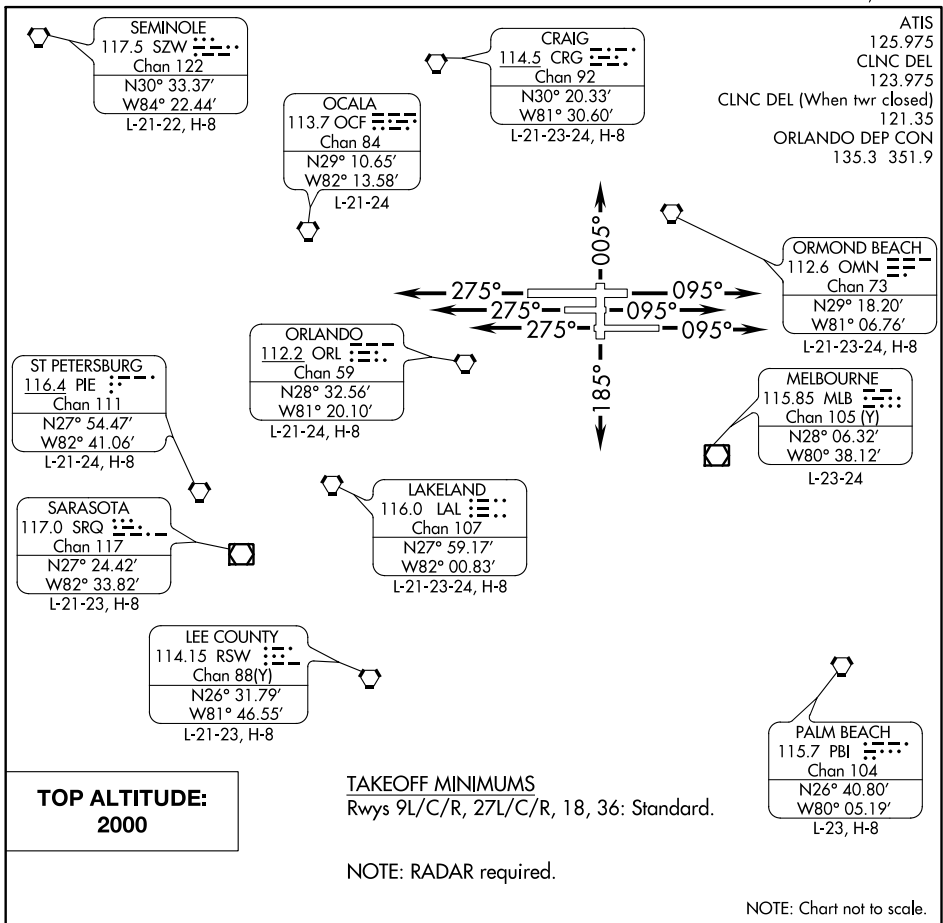


# SANFORD ONE DEPARTURE



SE-3, 27 JAN 2022 to 24 FEB 2022

SE-3, 27 JAN 2022 to 24 FEB 2022

**DEPARTURE ROUTE DESCRIPTION**

TAKEOFF RUNWAYS 9L/C/R: Climb on heading 095°, thence. . . .

TAKEOFF RUNWAYS 27L/C/R: Climb on heading 275°, thence. . . .

TAKEOFF RUNWAY 18: Climb on heading 185°, thence. . . .

TAKEOFF RUNWAY 36: Climb on heading 005°, thence. . . .

. . . .expect vectors to appropriate fix. Maintain 2000. Expect further clearance to filed altitude/flight level ten (10) minutes after departure.

# SANFORD ONE DEPARTURE