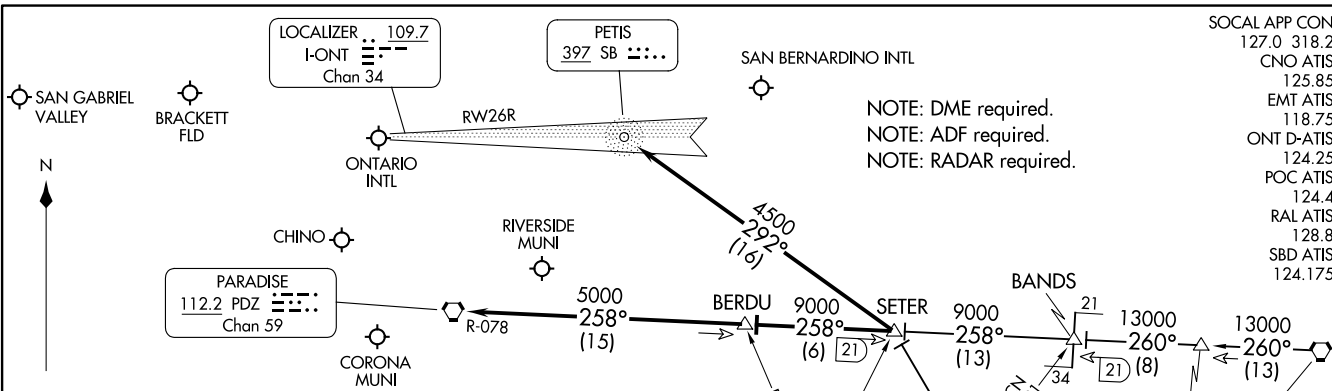


SETER FIVE ARRIVAL  
(SETER,SETER5) 17AUG17

(SETER,SETER5) 23278  
SETER FIVE ARRIVAL



SOCAL APP CON  
127.0 318.2  
CNO ATIS  
125.85  
EMT ATIS  
118.75  
ONT D-ATIS  
124.25  
POC ATIS  
124.4  
RAL ATIS  
128.8  
SBD ATIS  
124.175

**ARRIVAL ROUTE DESCRIPTION**

**JULIAN TRANSITION (JLI.SETER5):** From over JLI VORTAC on JLI R-315 to SETER. Thence. . . .  
**PALM SPRINGS TRANSITION (PSP.SETER5):** From over PSP VORTAC on PSP R-260 to BANDS, then on PDZ R-078 to SETER. Thence. . . .

**LANDING ONTARIO INTL**  
**RUNWAYS 26L/R:** From over SETER on SB NDB 292° course to SB NDB; expect ILS approach.  
**RUNWAYS 8L/R:** From over SETER on PDZ R-078 to BERDU, then on PDZ R-078 to PDZ VORTAC; expect vectors to final approach course.

**ALL OTHER AIRPORTS**  
 From over SETER via PDZ R-078 to BERDU, then on PDZ R-078 to PDZ VORTAC; expect vectors to final approach course.

HOMELAND  
112.05 HDF  
Chan 102

ROTHY  
VERTICAL NAVIGATION  
PLANNING INFORMATION  
Expect 12000

VERTICAL NAVIGATION  
PLANNING INFORMATION  
Expect 16000

OCEANSIDE  
115.3 OCN  
Chan 100

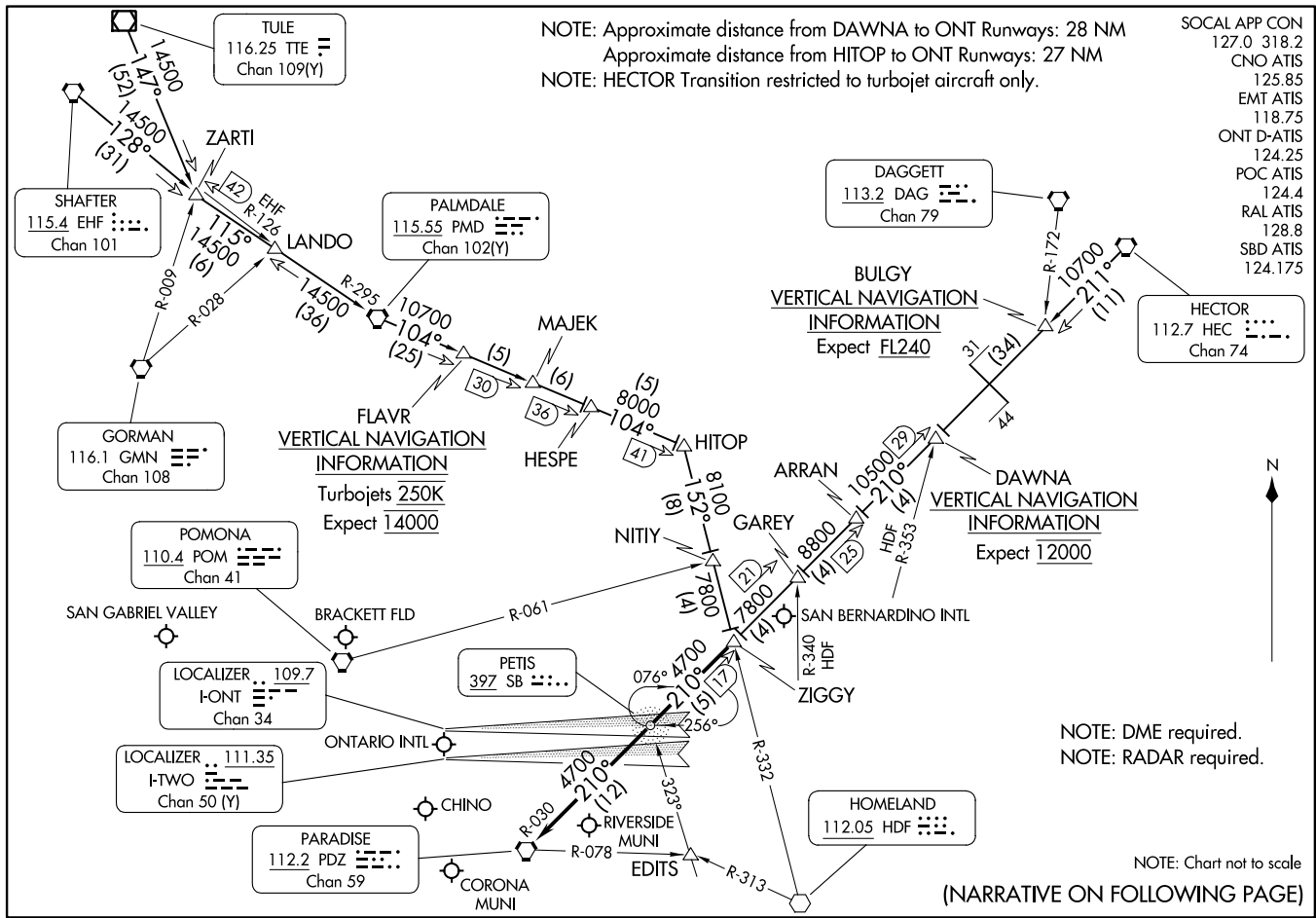
JULIAN  
114.0 JLI  
Chan 87  
VERTICAL NAVIGATION  
PLANNING INFORMATION  
Expect FL240

NOTE: Chart not to scale.

ONTARIO, CALIFORNIA

AL-965 (FAA)

ONTARIO, CALIFORNIA



NOTE: Approximate distance from DAWNA to ONT Runways: 28 NM  
 Approximate distance from HITOP to ONT Runways: 27 NM  
 NOTE: HECTOR Transition restricted to turbojet aircraft only.

- SOCAL APP CON 127.0 318.2
- CNO ATIS 125.85
- EMT ATIS 118.75
- ONT D-ATIS 124.25
- POC ATIS 124.4
- RAL ATIS 128.8
- SBD ATIS 124.175

NOTE: DME required.  
 NOTE: RADAR required.

NOTE: Chart not to scale  
 (NARRATIVE ON FOLLOWING PAGE)

ARRIVAL ROUTE DESCRIPTION

HECTOR TRANSITION (HEC.ZIGGY7): From over HEC VORTAC on HEC R-211 and PDZ R-030 to ZIGGY. Thence . . . .

PALMDALE TRANSITION (PMD.ZIGGY7): From over PMD VORTAC on PMD R-104 to HITOP, then on HDF R-332 to ZIGGY. Thence . . . .

SHAFTER TRANSITION (EHF.ZIGGY7): From over EHF VORTAC on EHF R-128 and PMD R-295 to PMD VORTAC, then on PMD R-104 to HITOP, then on HDF R-332 to ZIGGY. Thence . . . .

TULE TRANSITION (TTE.ZIGGY7): From over TTE VOR/DME on TTE R-147 and PMD R-295 to PMD VORTAC, then on PMD R-104 to HITOP, then on HDF R-332 to ZIGGY. Thence . . . .

LANDING ONTARIO INTL

RUNWAYS 8L/R: From over ZIGGY on PDZ R-030 to PDZ VORTAC; expect RADAR vectors to final approach course.

RUNWAYS 26 L/R: From over ZIGGY direct PETIS NDB or on PDZ R-030 to PETIS; expect RADAR vectors for ILS approach.

ALL OTHER AIRPORTS

From over ZIGGY on PDZ R-030 to PDZ VORTAC; expect RADAR vectors to final approach course.

SW-3, 22 FEB 2024 to 21 MAR 2024

SW-3, 22 FEB 2024 to 21 MAR 2024