

(POAKE2.POAKE) 23334

# POAKE TWO DEPARTURE

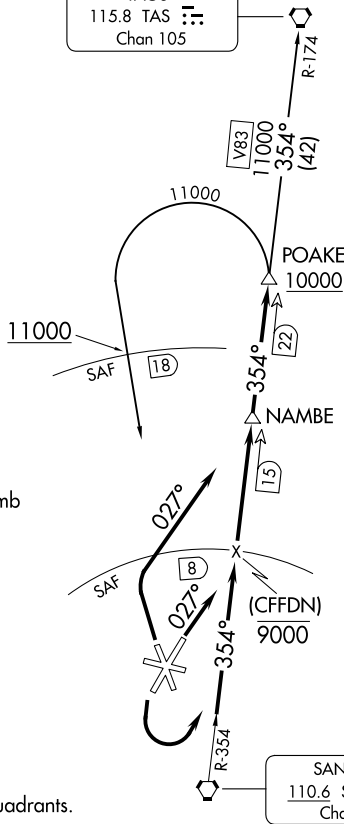
AL-548 (FAA)

SANTA FE RGNL (SAF)  
SANTA FE, NEW MEXICO

ALBUQUERQUE CENTER  
132.8 346.35  
ATIS  
128.55  
GND CON  
121.7  
SANTA FE TOWER\*  
119.5 (CTAF) 239.3

TAOS  
115.8 TAS : : :  
Chan 105

**TOP ALTITUDE:  
ASSIGNED by ATC**



### TAKEOFF MINIMUMS

Rwy 2: Standard with minimum climb of 220' per NM to 7300.

Rwy 20, 30: Standard.

CAUTION: Mountainous terrain all quadrants.

NOTE: DME required.

NOTE: Chart not to scale.

### DEPARTURE ROUTE DESCRIPTION

TAKEOFF RUNWAY 2: Climb heading 027° thence. . . .

TAKEOFF RUNWAY 20: Climbing left turn thence. . . .

TAKEOFF RUNWAY 33: Climbing right turn to heading 027° thence. . . .

. . . Intercept and proceed on SAF R-354 to POAKE DME fix. Cross 8 DME ARC north of SAF VORTAC at or below 9000. Cross POAKE DME fix at or above 10000. Then on (transition) or (assigned route).

SANTA FE TRANSITION (POAKE2.SAF): From POAKE DME fix left turn direct SAF VORTAC. Cross 18 DME north of SAF VORTAC at/above 11000'.

TAOS TRANSITION (POAKE2.TAS): From POAKE DME fix via SAF R-354 and TAS R-174 to TAS VORTAC.

# POAKE TWO DEPARTURE

(POAKE2.POAKE) 05JAN17

SANTA FE, NEW MEXICO  
SANTA FE RGNL (SAF)

SW-1, 22 FEB 2024 to 21 MAR 2024

SW-1, 22 FEB 2024 to 21 MAR 2024

(TAFOY3.TAFOY) 23334

# TAFOY THREE DEPARTURE

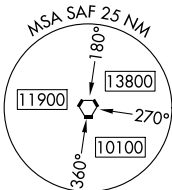
AL-548 (FAA)

SANTA FE RGNL (SAF)

SANTA FE, NEW MEXICO

ALBUQUERQUE CENTER  
 132.8 346.35  
 ATIS  
 128.55  
 GND CON  
 121.7  
 SANTA FE TOWER \*  
 119.5 239.3

**TOP ALTITUDE:  
 ASSIGNED BY ATC**



FORT UNION  
 117.3 FTI  
 Chan 120

SANTA FE  
 110.6 SAF  
 Chan 43

### TAKEOFF MINIMUMS

Rwys 15, 20, 33: Standard.  
 Rwy 2: Standard with minimum climb of  
 256' per NM to 8000.

CAUTION: Mountainous terrain all quadrants.

NOTE: Pilots must notify SAF air traffic control tower or  
 Albuquerque air route traffic control center prior  
 to flying this departure procedure.

NOTE: Chart not to scale.

TAFOY

ANTON CHICO  
 117.8 ACH  
 Chan 125

### DEPARTURE ROUTE DESCRIPTION

TAKEOFF RUNWAY 2: Climbing left turn direct SAF VORTAC, then on SAF VORTAC R-104 to TAFOY, thence. . . .

TAKEOFF RUNWAY 15: Climb on heading 159° direct SAF VORTAC, then on SAF VORTAC R-104 to TAFOY, thence. . . .

TAKEOFF RUNWAY 20: Climbing left turn on heading 160° to intercept SAF VORTAC R-284 to SAF VORTAC, then on SAF VORTAC R-104 to TAFOY, thence. . . .

TAKEOFF RUNWAY 33: Climbing right turn direct SAF VORTAC, then on SAF VORTAC R-104 to TAFOY, thence. . . .

. . . . on assigned transition. Maintain ATC assigned altitude. Expect further clearance to filed altitude ten minutes after departure.

ANTON CHICO TRANSITION (TAFOY3.ACH): From over TAFOY on ACH R-285 to ACH VORTAC.

FORT UNION TRANSITION (TAFOY3.FTI): From over TAFOY on FTI R-215 to FTI VORTAC.

# TAFOY THREE DEPARTURE

(TAFOY3.TAFOY) 15JUN23

SANTA FE, NEW MEXICO  
 SANTA FE RGNL (SAF)

SW-1, 22 FEB 2024 to 21 MAR 2024

SW-1, 22 FEB 2024 to 21 MAR 2024

(ZIASE5.ZIASE) 24025

# ZIASE FIVE DEPARTURE

AL-548 (FAA)

SANTA FE RGNL (SAF)  
SANTA FE, NEW MEXICO

ALBUQUERQUE CENTER  
132.8 346.35  
ATIS  
128.55  
GND CON  
121.7  
SANTA FE TOWER\*  
119.5 239.3

RADAR required.

**TOP ALTITUDE:  
ASSIGNED BY ATC**

CAUTION: Mountainous terrain all quadrants.

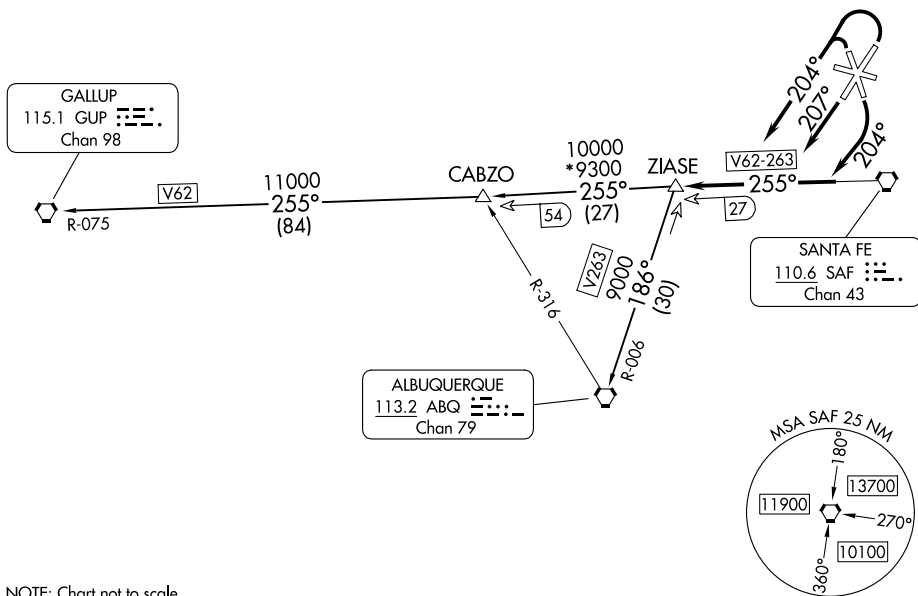
### TAKEOFF MINIMUMS

Rwys 10, 28: NA - ATC.

Rwys 15, 20: Standard.

Rwy 2: Standard with minimum climb of 235' per NM to 8200.

Rwy 33: Standard with minimum climb of 310' per NM to 8200.



NOTE: Chart not to scale.

### DEPARTURE ROUTE DESCRIPTION

**TAKEOFF RUNWAYS 2, 33:** Climbing left turn to heading 204° thence. . . .

**TAKEOFF RUNWAY 15:** Climbing right turn to heading 204° thence. . . .

**TAKEOFF RUNWAY 20:** Climb on heading 207° thence. . . .

. . . . intercept and proceed on SAF R-255 to ZIASE INT, then on assigned transition. Maintain ATC assigned altitude.

**ALBUQUERQUE TRANSITION (ZIASE5.ABQ):** From over ZIASE INT on ABQ R-006 to ABQ VORTAC.

**GALLUP TRANSITION (ZIASE5.GUP):** From over ZIASE INT on SAF R-255 and GUP R-075 to GUP VORTAC.

# ZIASE FIVE DEPARTURE

(ZIASE5.ZIASE) 25JAN24

SANTA FE, NEW MEXICO  
SANTA FE RGNL (SAF)

SW-1, 22 FEB 2024 to 21 MAR 2024

SW-1, 22 FEB 2024 to 21 MAR 2024