

**TOP ALTITUDE:  
ASSIGNED BY ATC**

**AEROZ TWO DEPARTURE (RNAV)**  
(AEROZ2.AEROZ) 22ARR21

(AEROZ2.AEROZ) 21112  
**AEROZ TWO DEPARTURE (RNAV)** AL-6111

ASOS  
119.375  
UNICOM (CTAF)  
122.725  
AUSTIN DEP CON  
119.0 370.85

SAN ANGELO  
SJT

TAKEOFF MINIMUMS  
Rwys 15, 33: Standard.

NOTE: RADAR required.  
NOTE: DME/DME/IRU or GPS required.  
NOTE: RNAV 1.

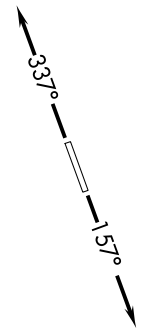


FL180  
293°  
(91)

AEROZ

293°  
(33)

AMUSE  
5000



NOTE: Chart not to scale.

**DEPARTURE ROUTE DESCRIPTION**

TAKEOFF RUNWAY 15: Climb on heading 157° or as assigned by ATC for vectors to cross AMUSE at or above 5000, thence....  
TAKEOFF RUNWAY 33: Climb on heading 337° or as assigned by ATC for vectors to cross AMUSE at or above 5000, thence....

... on track 293° to AEROZ, then on SAN ANGELO TRANSITION. Maintain altitude assigned by ATC. Expect filed altitude 10 minutes after departure.

SAN ANGELO TRANSITION (AEROZ2.SJT)

LAGO VISTA, TEXAS  
**LAGO VISTA TX - RUSTY ALLEN (R.Y.W)**

**LAGO VISTA TX - RUSTY ALLEN (R.Y.W)**  
LAGO VISTA, TEXAS

(BNDIA3.BNDIA) 21112

AL-6111 (FAA)

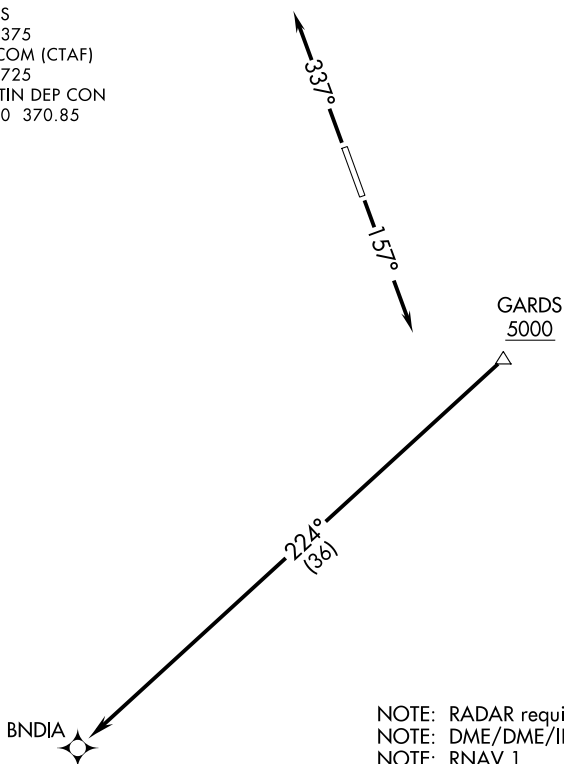
LAGO VISTA TX - RUSTY ALLEN (RYW)

# BNDIA THREE DEPARTURE (RNAV)

LAGO VISTA, TEXAS

ASOS  
119.375  
UNICOM (CTAF)  
122.725  
AUSTIN DEP CON  
119.0 370.85

**TOP ALTITUDE:  
ASSIGNED BY ATC**



NOTE: RADAR required.  
NOTE: DME/DME/IRU or GPS required.  
NOTE: RNAV 1.

TAKEOFF MINIMUMS:  
Rwys 15, 33: Standard.

NOTE: Chart not to scale.

## DEPARTURE ROUTE DESCRIPTION

TAKEOFF RUNWAY 15: Climb on heading 157° or as assigned by ATC for vectors to cross GARDS at or above 5000, thence....

TAKEOFF RUNWAY 33: Climb on heading 337° or as assigned by ATC for vectors to cross GARDS at or above 5000, thence....

....on track 224° to BNDIA. Maintain altitude assigned by ATC. Expect filed altitude 10 minutes after departure.

**BNDIA THREE DEPARTURE (RNAV)**  
(BNDIA3.BNDIA) 22APR21

LAGO VISTA, TEXAS  
LAGO VISTA TX - RUSTY ALLEN (RYW)

SC-3, 02 DEC 2021 to 30 DEC 2021

SC-3, 02 DEC 2021 to 30 DEC 2021

(ELOEL3.ELOEL) 21112

LAGO VISTA TX - RUSTY ALLEN (RYW)

# ELOEL THREE DEPARTURE (RNAV) AL-6111 (FAA)

LAGO VISTA, TEXAS

**TOP ALTITUDE:  
ASSIGNED BY ATC**

ASOS  
119.375  
UNICOM (CTAF)  
122.725  
AUSTIN DEP CON  
119.0 370.85

ABILENE  
ABI

FL 180  
307°  
(120)

TAKEOFF MINIMUMS:  
Rwys 15, 33: Standard.

FORSS

KLNGR

10500  
\*2700  
338°  
(10)

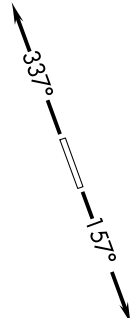
10500  
\*2700  
329°  
(18)

NOTE: RADAR required.  
NOTE: DME/DME/IRU or GPS required.  
NOTE: RNAV 1.

ELOEL

338°  
(10)

WLMRT  
5000



NOTE: Chart not to scale.



## DEPARTURE ROUTE DESCRIPTION

TAKEOFF RUNWAY 15: Climb on heading 157° or as assigned by ATC for vectors to cross WLMRT at or above 5000, thence....

TAKEOFF RUNWAY 33: Climb on heading 337° or as assigned by ATC for vectors to cross WLMRT at or above 5000, thence....

... on track 338° to ELOEL. then on transition. Maintain altitude assigned by ATC. Expect filed altitude 10 minutes after departure.

ABILENE TRANSITION (ELOEL3.ABI)

FORSS TRANSITION (ELOEL3.FORSS)

KLNGR TRANSITION (ELOEL3.KLNGR)

# ELOEL THREE DEPARTURE (RNAV)

(ELOEL3.ELOEL) 22APR21

LAGO VISTA, TEXAS

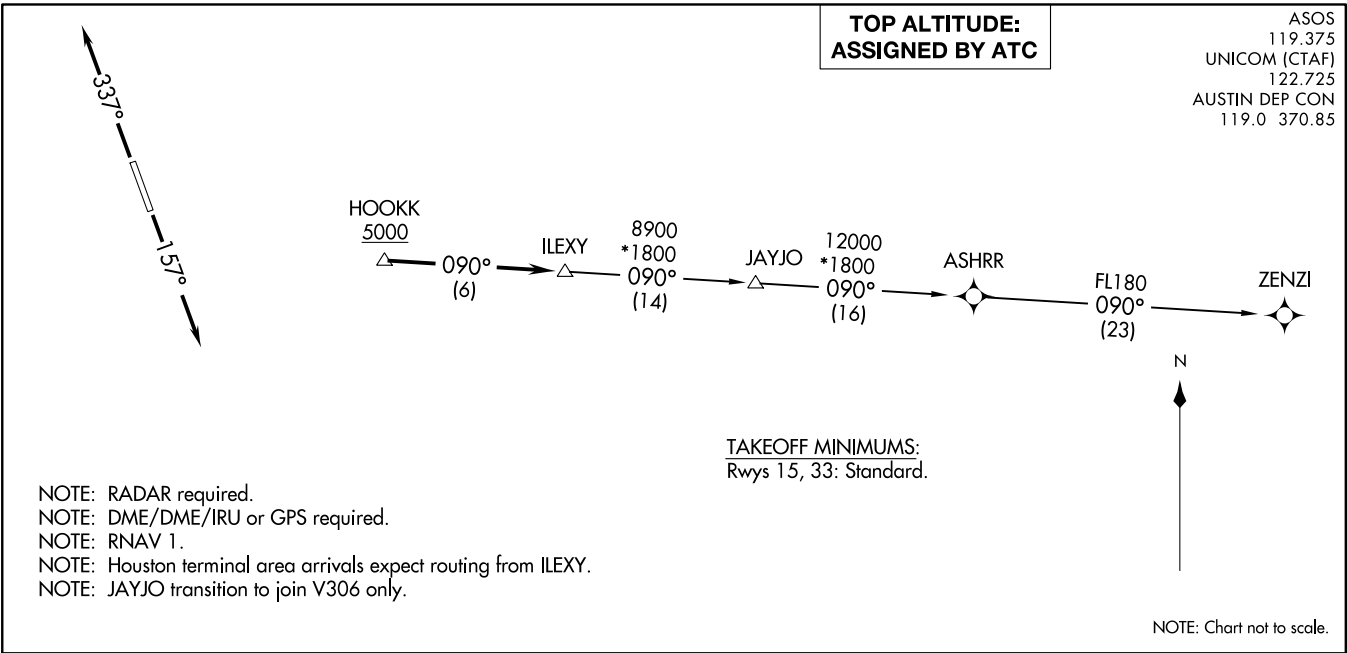
LAGO VISTA TX - RUSTY ALLEN (RYW)

SC-3, 02 DEC 2021 to 30 DEC 2021

SC-3, 02 DEC 2021 to 30 DEC 2021

**ILEXY THREE DEPARTURE (RNAV)**  
(ILEXY3.ILEXY) 22APR21

LAGO VISTA TX - RUSTY ALLEN (R.YW)  
LAGO VISTA, TEXAS



(ILEXY3.ILEXY) 21112  
**ILEXY THREE DEPARTURE (RNAV)** AL-6111 (FAA)

LAGO VISTA TX - RUSTY ALLEN (R.YW)  
LAGO VISTA, TEXAS

**DEPARTURE ROUTE DESCRIPTION**

TAKEOFF RUNWAY 15: Climb on heading 157° or as assigned by ATC for vectors to cross HOOKK at or above 5000, thence. . . .  
TAKEOFF RUNWAY 33: Climb on heading 337° or as assigned by ATC for vectors to cross HOOKK at or above 5000, thence. . . .  
 . . . . on track 090° to ILEXY, then on transition. Maintain altitude assigned by ATC. Expect filed altitude 10 minutes after departure.

JAYJO TRANSITION (ILEXY3.JAYJO)  
ZENZI TRANSITION (ILEXY3.ZENZI)

(MUCKY3.MUCKY) 21112

AL-6111 (FAA)

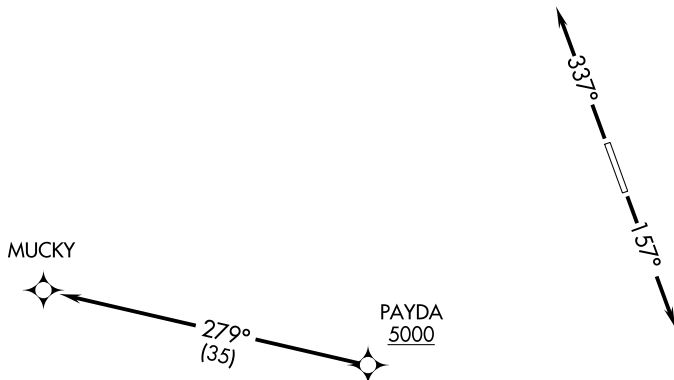
LAGO VISTA TX - RUSTY ALLEN (RYW)

# MUCKY THREE DEPARTURE (RNAV)

LAGO VISTA, TEXAS

ASOS  
119.375  
UNICOM (CTAF)  
122.725  
AUSTIN DEP CON  
119.0 370.85

**TOP ALTITUDE:  
ASSIGNED BY ATC**



TAKEOFF MINIMUMS:  
Rwys 15, 33: Standard.

NOTE: RADAR required.  
NOTE: DME/DME/IRU or GPS required.  
NOTE: RNAV 1.

NOTE: Chart not to scale.



## DEPARTURE ROUTE DESCRIPTION

TAKEOFF RUNWAY 15: Climb on heading 157° or as assigned by ATC for vectors to cross PAYDA at or above 5000, thence....

TAKEOFF RUNWAY 33: Climb on heading 337° or as assigned by ATC for vectors to cross PAYDA at or above 5000, thence....

... on track 279° to MUCKY. Maintain altitude assigned by ATC.  
Expect filed altitude 10 minutes after departure.

# MUCKY THREE DEPARTURE (RNAV)

(MUCKY3.MUCKY) 22APR21

LAGO VISTA, TEXAS

LAGO VISTA TX - RUSTY ALLEN (RYW)

SC-3, 02 DEC 2021 to 30 DEC 2021

SC-3, 02 DEC 2021 to 30 DEC 2021

(SAYBR3.SAYBR) 21112

# SAYBR THREE DEPARTURE (RNAV)

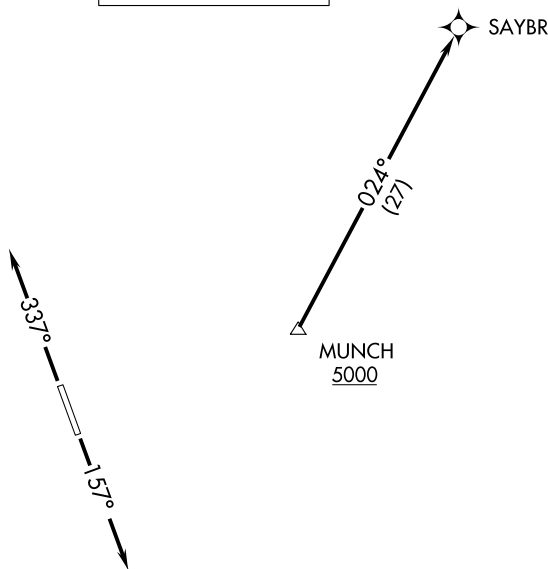
AL-6111 (FAA)

LAGO VISTA TX - RUSTY ALLEN (RYW)

LAGO VISTA, TEXAS

ASOS  
119.375  
UNICOM (CTAF)  
122.725  
AUSTIN DEP CON  
119.0 370.85

**TOP ALTITUDE:  
ASSIGNED BY ATC**



NOTE: RADAR required.  
NOTE: DME/DME/IRU or GPS required.  
NOTE: RNAV 1.  
NOTE: For DFW terminal area arrivals at FL230 or below only.

### TAKEOFF MINIMUMS

Rwys 15, 33: Standard.

NOTE: Chart not to scale.



### DEPARTURE ROUTE DESCRIPTION

TAKEOFF RUNWAY 15: Climb on heading 157° or as assigned by ATC for vectors to cross MUNCH at or above 5000, thence....

TAKEOFF RUNWAY 33: Climb on heading 337° or as assigned by ATC for vectors to cross MUNCH at or above 5000, thence....

... on track 024° to SAYBR. Maintain altitude assigned by ATC.  
Expect filed altitude 10 minutes after departure.

# SAYBR THREE DEPARTURE (RNAV)

(SAYBR3.SAYBR) 22APR21

LAGO VISTA, TEXAS

LAGO VISTA TX - RUSTY ALLEN (RYW)

SC-3, 02 DEC 2021 to 30 DEC 2021

SC-3, 02 DEC 2021 to 30 DEC 2021