

| | |
|------------------------|------------------------|
| APP CRS 146° | Rwy Idg 3252 |
| | TDZE 391 |
| | Apt Elev 391 |

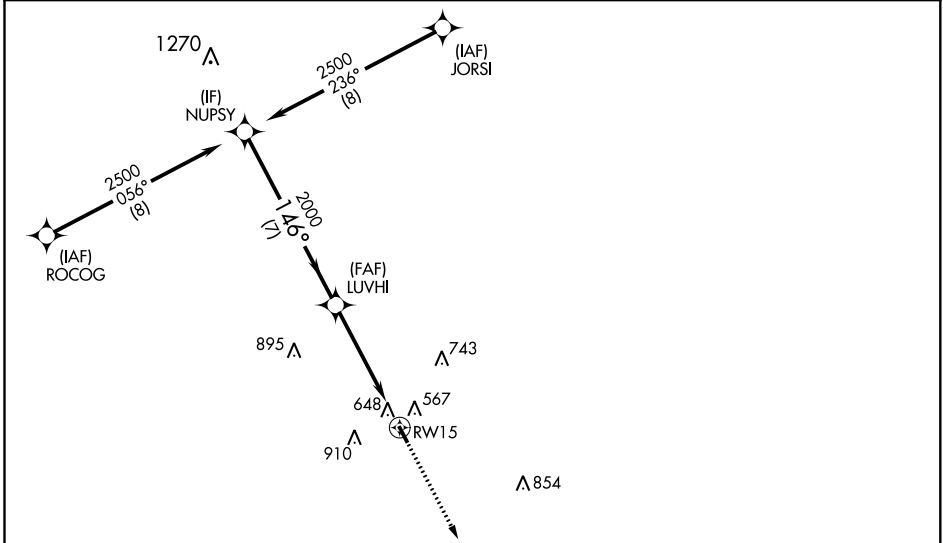
RNAV (GPS) RWY 15

CALDWELL MUNI (RWV)

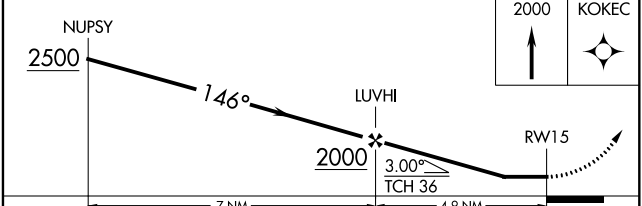
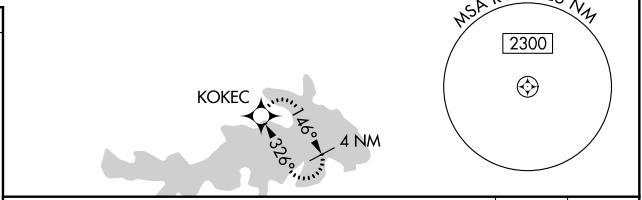
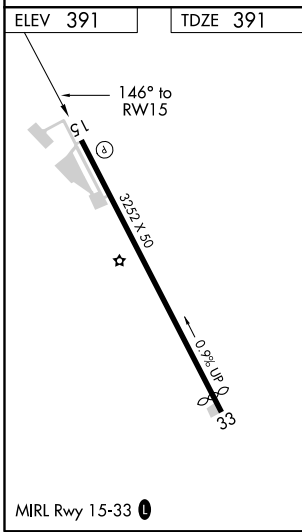
⚠ When local altimeter setting not received, use College Station altimeter setting and increase all MDA 60 feet. Circling NA east of Rwy 15-33. DME/DME RNP-0.3 NA. Procedure NA at night. Helicopter visibility reduction below 1 SM NA.

⚠ MISSED APPROACH: Climb to 2000 direct KOKEC and hold.

| | | |
|---------------------------|--|-------------------------------|
| AWOS-3PT 118,35 | HOUSTON APP CON 134.3 360,85 | CTAF 122.9 ① |
|---------------------------|--|-------------------------------|



RADAR REQUIRED



| | | | | |
|----------|-----------------------|-------------------------|----|---|
| CATEGORY | A | B | C | D |
| LNAV MDA | 960-1 | 569 (600-1) | NA | |
| CIRCLING | 1000-1 609 (700-1) | 1220-1¼ 829 (900-1¼) | NA | |

SC-5, 16 JUN 2022 to 14 JUL 2022

SC-5, 16 JUN 2022 to 14 JUL 2022

| | | |
|-------------|----------|-------------|
| APP CRS | Rwy Idg | 3010 |
| 326° | TDZE | 390 |
| | Apt Elev | 391 |

RNAV (GPS) RWY 33

CALDWELL MUNI (RWV)

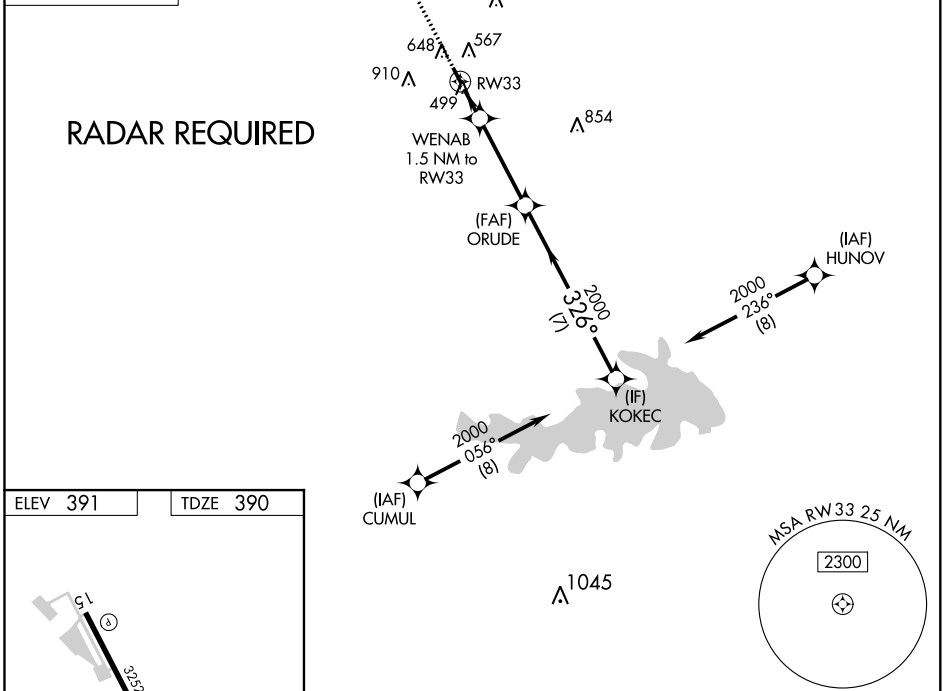
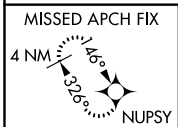
⚠ When local altimeter setting not received, use College Station altimeter setting and increase all MDA 60 feet. Circling NA east of Rwy 15-33. DME/DME RNP-0.3 NA. Procedure NA at night. Rwy 33 helicopter visibility reduction below 1 SM NA.

MISSED APPROACH: Climb to 2500 direct NUPSY and hold.

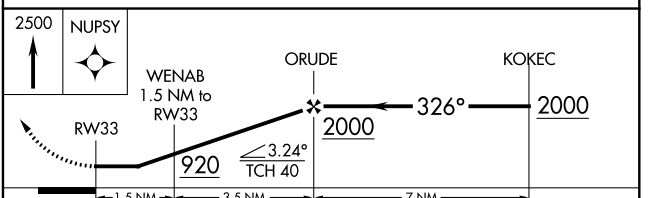
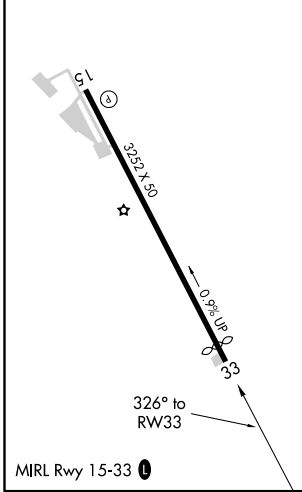
AWOS-3PT
118.35

HOUSTON APP CON
134.3 360.85

CTAF
122.9



| | |
|----------|----------|
| ELEV 391 | TDZE 390 |
|----------|----------|



| CATEGORY | A | B | C | D |
|----------|-----------------------|-------------------------|----|---|
| LNAV MDA | 760-1 | 370 (400-1) | NA | |
| CIRCLING | 1000-1 609 (700-1) | 1220-1¼ 829 (900-1¼) | NA | |

SC-5, 16 JUN 2022 to 14 JUL 2022

SC-5, 16 JUN 2022 to 14 JUL 2022

| | | | |
|--|------------------------|---|--------------------------|
| VORTAC CLL 113.3 Chan 80 | APP CRS 243° | Rwy Idg TDZE Apt Elev 391 | N/A N/A 391 |
|--|------------------------|---|--------------------------|

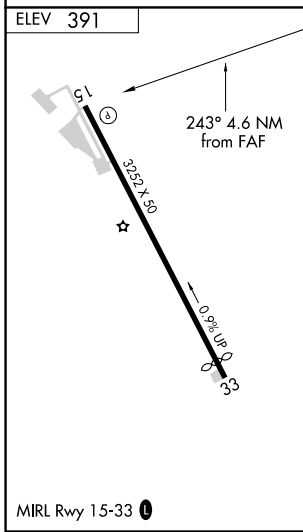
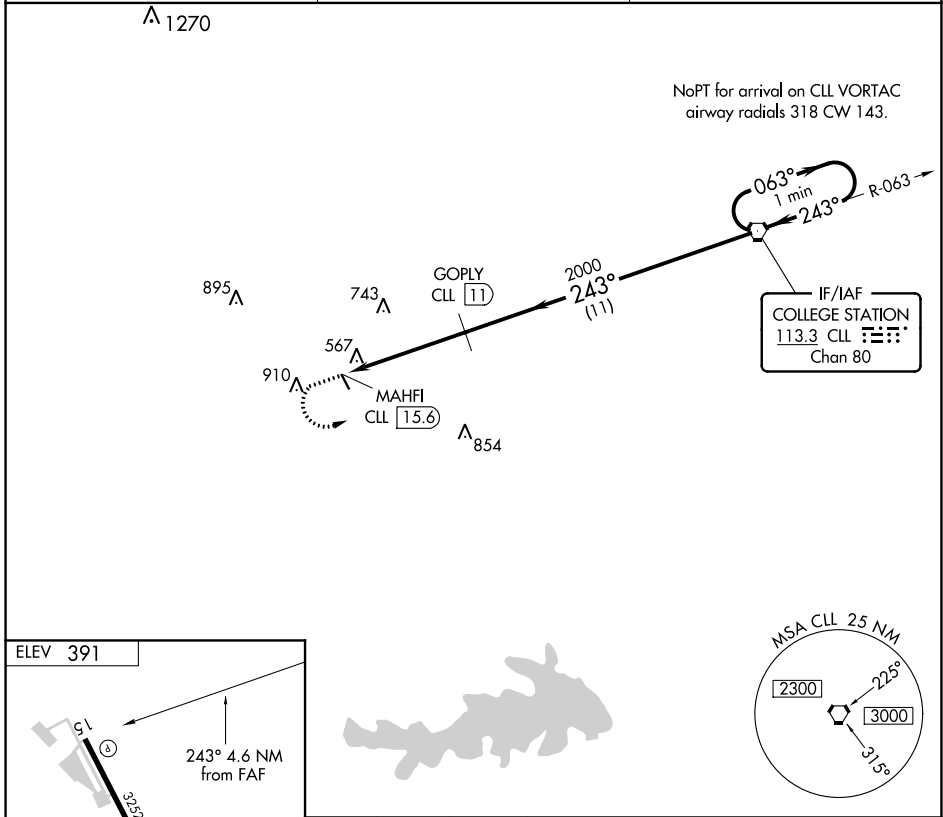
VOR/DME-A

CALDWELL MUNI (R/WV)

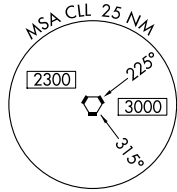
⚠ When local altimeter setting not received, use College Station altimeter setting and increase MDA 60 feet. Circling NA east of Rwy 15-33. Procedure NA at night.

MISSED APPROACH: Climb to 2000 then climbing left turn to 2100 direct CLL VORTAC and hold.

| | | |
|---------------------------|--|----------------------|
| AWOS-3PT 118.35 | HOUSTON APP CON 134.3 360.85 | CTAF 122.9 |
|---------------------------|--|----------------------|



| | | | | |
|----------------|-----------------------|-------------------------|------------|----------------------------|
| 2000 | 2100 | CLL | CLL VORTAC | One Minute Holding Pattern |
| ↑ | ↶ | ⬡ | ⬡ | ⬡ |
| MAHFI CLL 15.6 | | GOPLY CLL 11 | 2000 | 2100 |
| 4.6 NM | | 11 NM | | 063° → 2100 |
| ← 243° | | ← 243° | | ← 243° |
| CATEGORY | A | B | C | D |
| CIRCLING | 1000-1 609 (700-1) | 1220-1¼ 829 (900-1¼) | NA | |



SC-5, 16 JUN 2022 to 14 JUL 2022

SC-5, 16 JUN 2022 to 14 JUL 2022