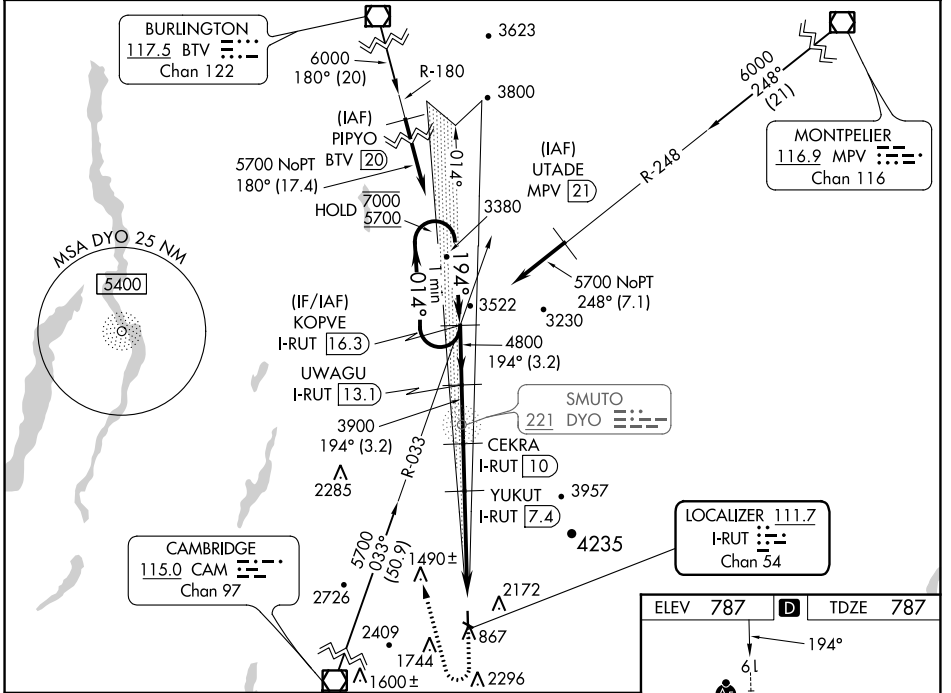


LOC/DME I-RUT 111.7 Chan 54	APP CRS 194°	Rwy Idg 5003 TDZE 787 Apt Elev 787
---	------------------------	---

ILS Y or LOC Y RWY 19

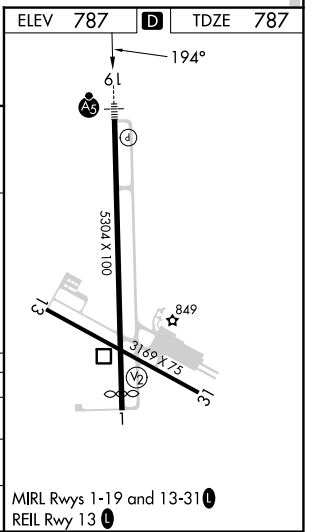
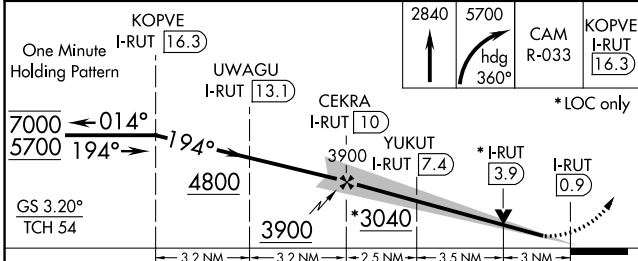
RUTLAND/SOUTHERN VERMONT RGNL (RUT)

DME required.		MALSR 	MISSED APPROACH: Climb to 2840 then climbing right turn to 5700 on heading 360° and CAM VOR/DME R-033 to KOPVE/I-RUT 16.3 DME and hold.
	Circling to Rwy 13, 31 NA at night. Circling NA northeast of Rws 19 and 31. Inop table does not apply to S-ILS 19 all Cats, S-LOC 19 Cats C/D.		
AWOS-3PT 118.375	BOSTON CENTER 135.7 282.2	UNICOM 122.8 (CTAF) 0	



NE-1, 22 FEB 2024 to 21 MAR 2024

NE-1, 22 FEB 2024 to 21 MAR 2024



CATEGORY	A	B	C	D
S-ILS 19	2162-5 1375 (1400-5)			
S-LOC 19	2160-3/4 1373 (1400-3/4)	2160-1 1373 (1400-1)	2160-3 1373 (1400-3)	
CIRCLING	2160-1 1/4 1373 (1400-1 1/4)	2160-1 1/2 1373 (1400-1 1/2)	2520-3 1733 (1800-3)	2760-3 1973 (2000-3)

LOC/DME I-RUT 111.7 Chan 54	APP CRS 194°	Rwy ldg 5003 TDZE 787 Apt Elev 787
---	------------------------	---

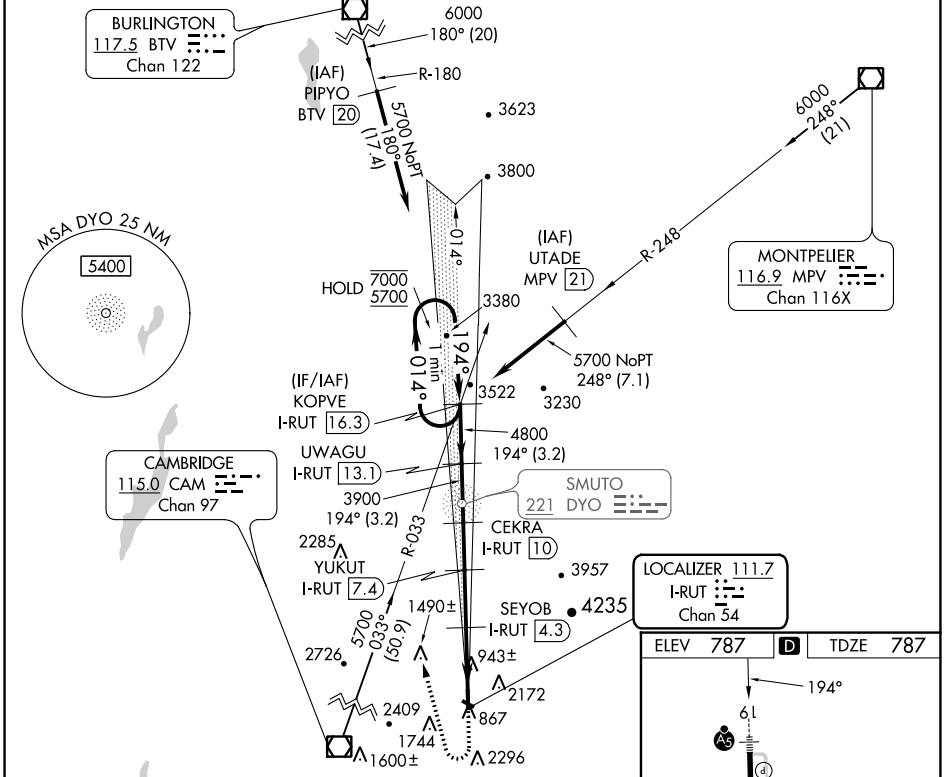
ILS Z or LOC Z RWY 19

RUTLAND/SOUTHERN VERMONT RGNL (RUT)

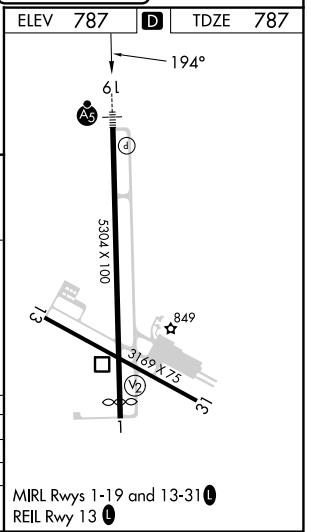
DME required.

MALS R MISSED APPROACH: Climb to 1900 then climbing right turn to 5700 on heading 360° and CAM VOR/DME R-033 to KOPVE/I-RUT 16.31 DME and hold. If unable to meet climb gradient, see ILS Y or LOC Y Rwy 19. # Missed approach requires minimum climb of 425 feet per NM to 3200.

AWOS-3PT 118.375	BOSTON CENTER 135.7 282.2	UNICOM 122.8 (CTAF) 0
----------------------------	-------------------------------------	---------------------------------



One Minute Holding Pattern	1900	5700	CAM R-033	KOPVE I-RUT 16.3
KOPVE I-RUT 16.3	UWAGU I-RUT 13.1	CEKRA I-RUT 10	YUKUT I-RUT 7.4	SEYOBB I-RUT 4.3
7000 ← 014°	5700 → 194°	4800 → 194°	3900 → 194°	3040 → 194°
GS 3.20° TCH 54	3.2 NM	3.2 NM	2.5 NM	3.1 NM
1.4 NM	2 NM	*LOC only		
CATEGORY	A	B	C	D
S-ILS 19 #	1451-1½ 664 (700-1½)			
S-LOC 19 #	1520-½ 733 (800-½)	1520-1½ 733 (800-1½)	2520-3 1733 (1800-3)	2760-3 1973 (2000-3)
CIRCLING	2160-1¼ 1373 (1400-1¼)	2160-1½ 1373 (1400-1½)	2520-3 1733 (1800-3)	2760-3 1973 (2000-3)



NE-1, 22 FEB 2024 to 21 MAR 2024

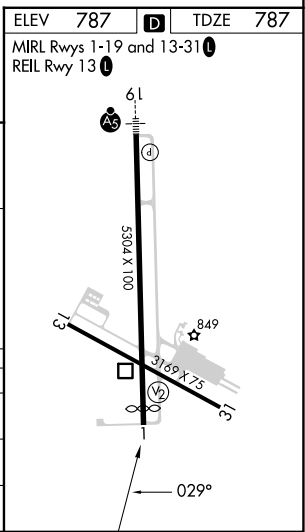
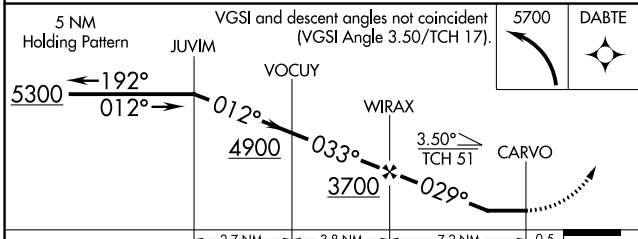
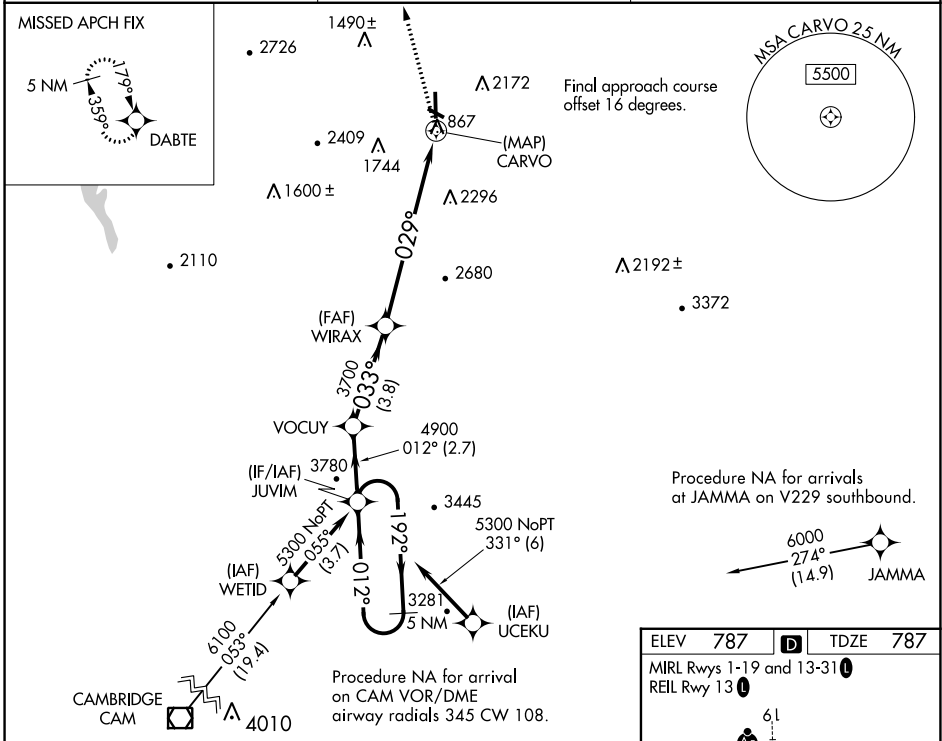
NE-1, 22 FEB 2024 to 21 MAR 2024

WAAS CH 50141 W01A	APP CRS 029°	Rwy Idg TDZE Apt Elev	5003 787 787
--	------------------------	-----------------------------	---

RNAV (GPS) RWY 1

RUTLAND/SOUTHERN VERMONT RGNL (RUT)

	DME/DME RNP-0.3 NA. Procedure NA at night. When local altimeter setting not received, use Springfield altimeter setting and increase all MDA 500 feet. Rwy 1 helicopter visibility reduction below 1 SM NA. Circling NA E of Rws 19 and 31.	MISSED APPROACH: Climbing left turn 5700 direct DABTE and hold.
AWOS-3PT 118.375	BOSTON CENTER 135.7 282.2	UNICOM 122.8 (CTAF)



CATEGORY	A	B	C	D
LP MDA	2420-1¼ 1633 (1700-1¼)	2420-1½ 1633 (1700-1½)	2420-3	1633 (1700-3)
LNAV MDA	3100-1¼ 2313 (2400-1¼)	3100-1½ 2313 (2400-1½)	3100-3	2313 (2400-3)
CIRCLING	3100-1¼ 2313 (2400-1¼)	3100-1½ 2313 (2400-1½)	3100-3	2313 (2400-3)

NE-1, 22 FEB 2024 to 21 MAR 2024

NE-1, 22 FEB 2024 to 21 MAR 2024

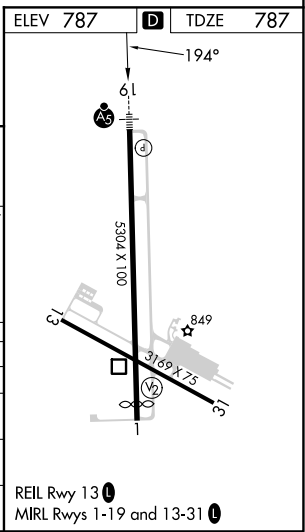
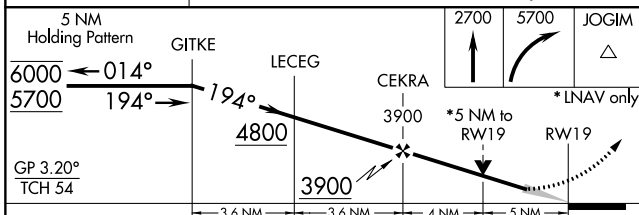
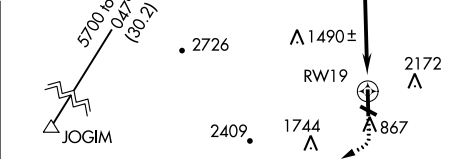
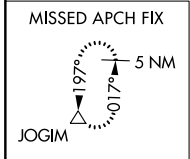
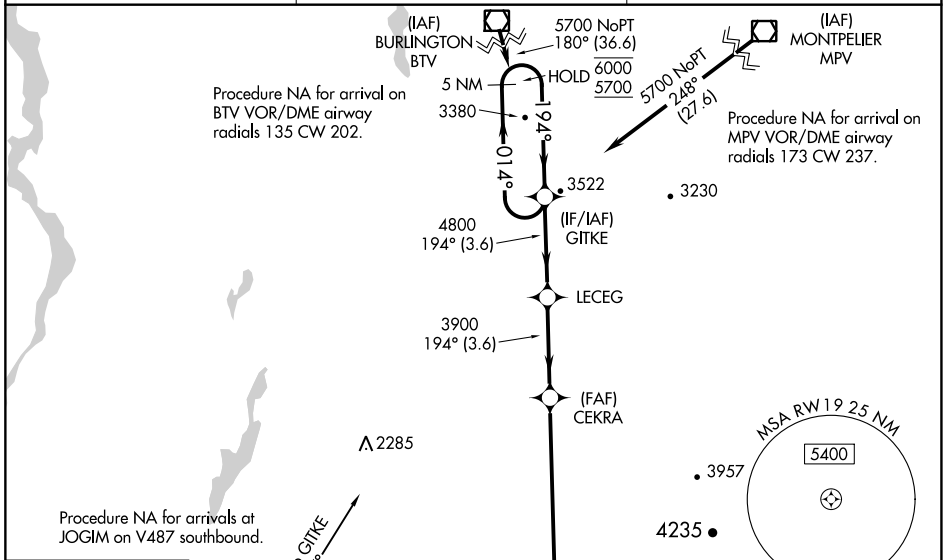
WAAS CH 65830 W19A	APP CRS 194°	Rwy Idg TDZE 787 Apt Elev 787	5003
--	------------------------	---	-------------

RNAV (GPS) Y RWY 19

RUTLAND/SOUTHERN VERMONT RGNL (RUT)

RNP APCH.	<p>Circling NA northeast of Rwy 19 and 31. Circling Rwy 13, 31 NA at night. Inop table does not apply to LPV, LNAV/VNAV all Cats; LNAV Cat C. Baro-VNAV NA.</p>	MALSR	<p>MISSED APPROACH: Climb to 2700, then climbing right turn to 5700 direct JOGIM and hold, continue climb-in-hold to 5700.</p>
-----------	---	-------	--

AWOS-3PT 118.375	BOSTON CENTER 135.7 282.2	UNICOM 122.8 (CTAF) 0
----------------------------	-------------------------------------	---------------------------------



CATEGORY	A	B	C	D
LPV DA	2270-5	1483 (1500-5)		NA
LNAV/VNAV DA	2223-5	1436 (1500-5)		NA
LNAV MDA	2560-3/4 1773 (1800-3/4)	2560-1 1773 (1800-1)	2560-3 1773 (1800-3)	NA
C CIRCLING	2560-1 1/4 1773 (1800-1 1/4)	2560-1 1/2 1773 (1800-1 1/2)	2560-3 1773 (1800-3)	NA

NE-1, 22 FEB 2024 to 21 MAR 2024

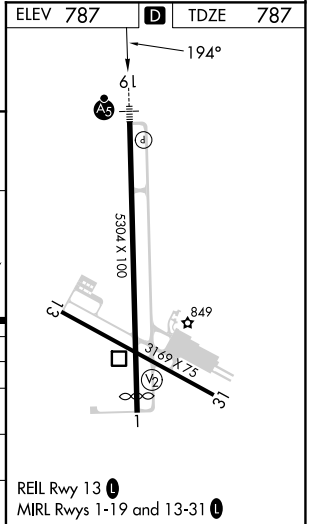
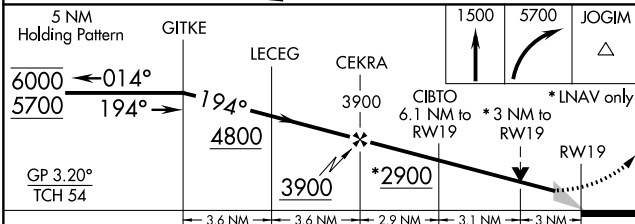
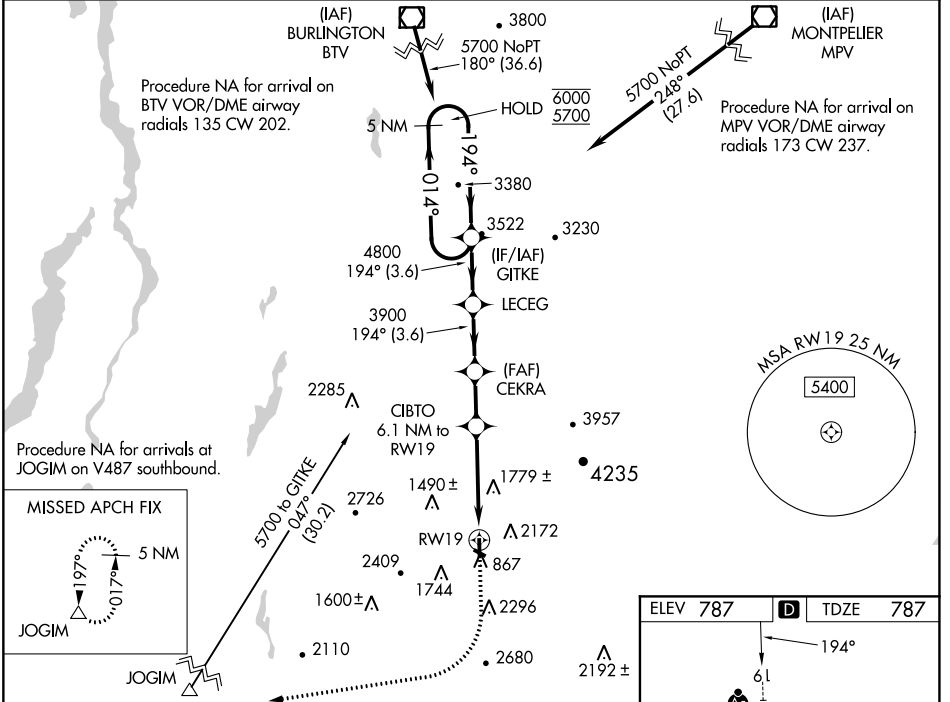
NE-1, 22 FEB 2024 to 21 MAR 2024

WAAS CH 93730 W19B	APP CRS 194°	Rwy Idg TDZE Apt Elev	5003 787 787
--	------------------------	-----------------------------	---

RNAV (GPS) Z RWY 19

RUTLAND/SOUTHERN VERMONT RGNL (RUT)

RNP APCH.		MALSRL	MISSED APPROACH: Climb to 1500 then climbing right turn to 5700 direct JOGIM and hold, continue climb-in-hold to 5700. † Missed approach requires minimum climb of 420 feet per NM to 3200; if unable to meet climb gradient, see RNAV (GPS) Y Rwy 19.
<p>⚠ Circling NA northeast of Rwy 19 and 31. ⚠ Circling Rwy 13, 31 NA at night. ⚠ Inop table does not apply to LNAV/VNAV all Cats. ⚠ Baro-VNAV NA. For inop ALS, increase LPV all Cats visibility to 1½ miles.</p>			
AWOS-3PT 118.375		BOSTON CENTER 135.7 282.2	UNICOM 122.8 (CTAF) 0



CATEGORY	A	B	C	D
LPV DA†	1201-¾	414 (500-¾)		NA
LNAV/VNAV DA	2150-5	1363 (1400-5)		NA
LNAV MDA†	1820-¾ 1033 (1100-¾)	1820-1 1033 (1100-1)	1820-2½ 1033 (1100-2½)	NA
CIRCLING	2560-1¼ 1773 (1800-1¼)	2560-1½ 1773 (1800-1½)	2560-3 1773 (1800-3)	NA

RNAV (GPS) Z RWY 19

NE-1, 22 FEB 2024 to 21 MAR 2024

NE-1, 22 FEB 2024 to 21 MAR 2024