

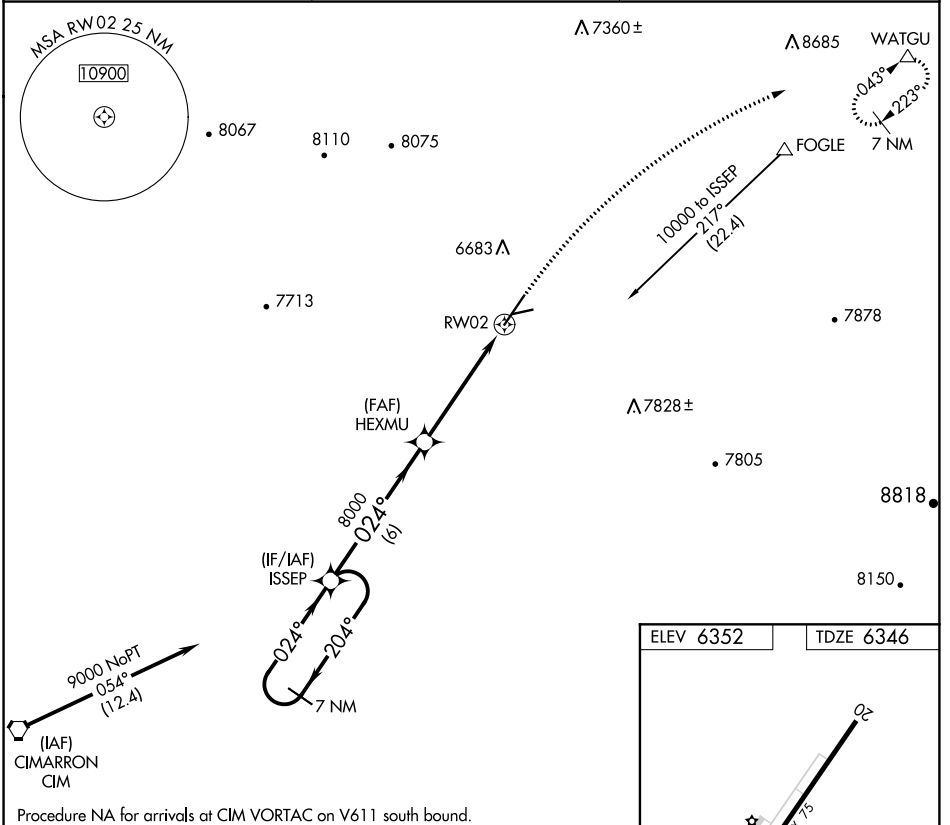
APP CRS 024°	Rwy Idg TDZE Apt Elev	7615 6346 6352
------------------------	-----------------------------	---

RNAV (GPS) RWY 2

RATON MUNI/CREWS FLD (RTN)

RNP APCH-GPS.	MISSED APPROACH: Climbing right turn to 11600 direct WATGU and hold, continue climb-in-hold to 11600.
Procedure NA at night. Rwy 2 helicopter visibility reduction below 1 SM NA.	

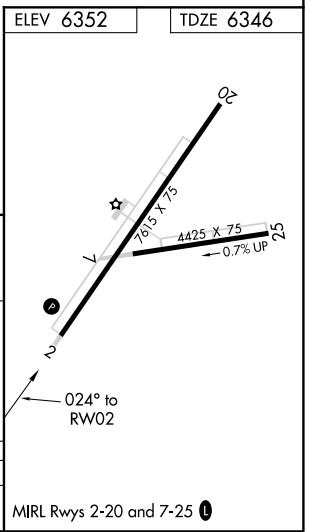
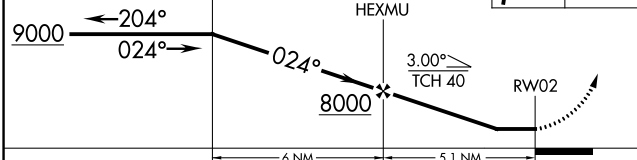
ASOS 118.375	ALBUQUERQUE CENTER 132.8 346.35	UNICOM 122.8 (CTAF)
------------------------	---	-------------------------------



Procedure NA for arrivals at CIM VORTAC on V611 south bound.

7 NM Holding Pattern

VGSI and descent angles not coincident (VGSI Angle 3.00/TCH 44).



CATEGORY	A	B	C	D
LNAV MDA	7020-1	674 (700-1)	7020-2	674 (700-2)

SW-1, 30 DEC 2021 to 27 JAN 2022

SW-1, 30 DEC 2021 to 27 JAN 2022

APP CRS 248°	Rwy Idg 4425
	TDZE 6338
	Apt Elev 6352

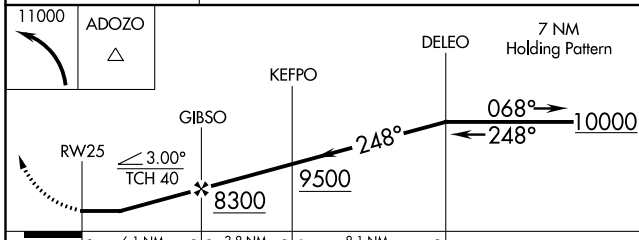
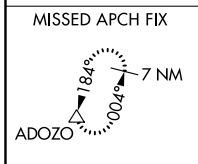
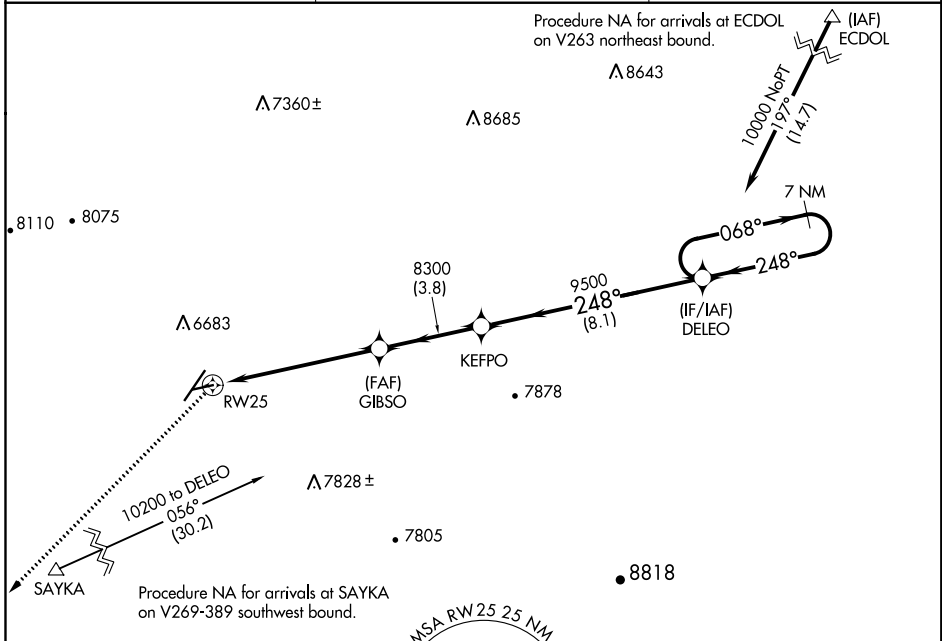
RNAV (GPS) RWY 25

RATON MUNI/CREWS FLD (RTN)

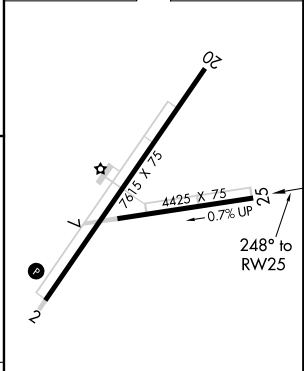
⚠ Circling NA for Cats C/D west of Rwy 2-20.
⚠ DME/DME RNP-0.3 NA. Procedure NA at night.
 Rwy 2 helicopter visibility reduction below 1 SM NA.

MISSED APPROACH: Climbing left turn to 11000
 direct ADOZO and hold.

ASOS 118.375	ALBUQUERQUE CENTER 132.8 346.35	UNICOM 122.8 (CTAF) 0
------------------------	---	---------------------------------



ELEV 6352	TDZE 6338
-----------	-----------



CATEGORY	A	B	C	D
LNAV MDA	6760-1	422 (500-1)	6760-1 3/8	422 (500-1 3/8)
CIRCLING	6840-1 488 (500-1)	7000-1 648 (700-1)	7020-1 3/4 668 (700-1 3/4)	7640-3 1288 (1300-3)

MIRL Rwy 2-20 and 7-25 0

SW-1, 30 DEC 2021 to 27 JAN 2022

SW-1, 30 DEC 2021 to 27 JAN 2022