

WAAS CH <b>93904</b> <b>W17A</b>	APP CRS <b>167°</b>	Rwy Idg TDZE <b>1864</b> Apt Elev <b>1864</b>	<b>5000</b>
--	------------------------	---	-------------

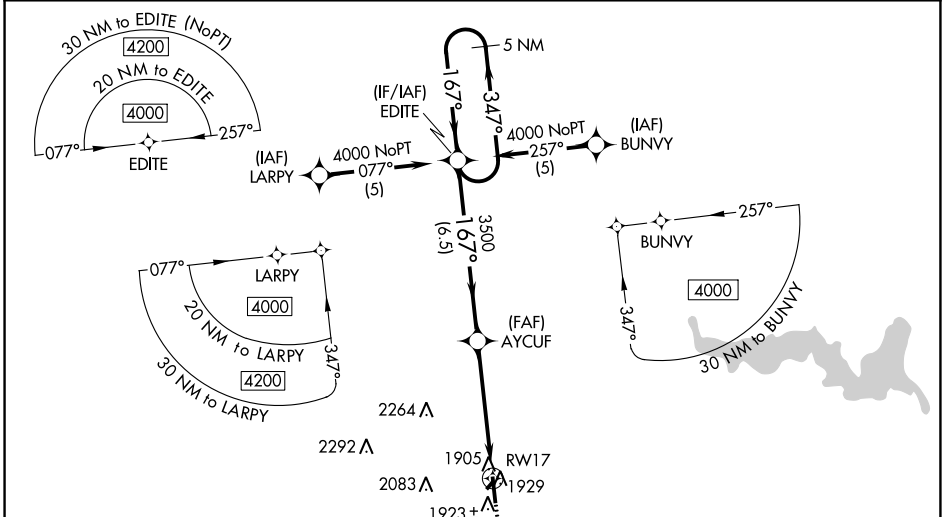
# RNAV (GPS) RWY 17

RUSSELL MUNI (RSL)

**⚠** Baro-VNAV and VDP NA when using Hays altimeter setting. For uncompensated Baro-VNAV systems, LNAV/VNAV NA below -18°C (0°F) or above 54°C (130°F). DME/DME RNP-0.3 NA. Helicopter visibility reduction below ¼ SM NA. When local altimeter setting not received, use Hays altimeter setting: increase LPV DA all Cats to 2186 feet, LNAV/VNAV all Cats DA to 2244 feet and all visibilities ¼ SM; increase all MDA 80 feet and LNAV Cat C and Circling Cat C visibility ¼ SM. Circling NA to Rwys 3 and 21.

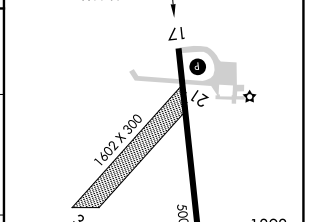
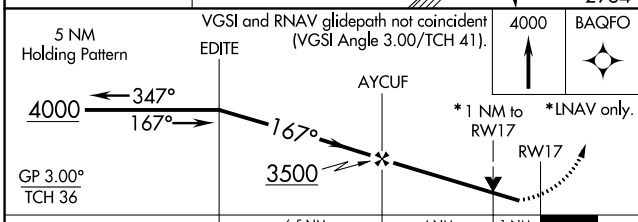
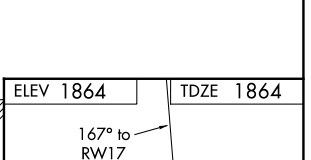
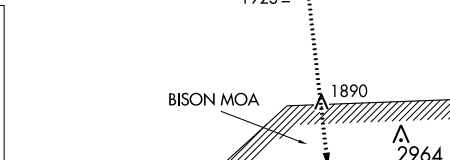
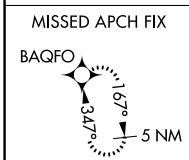
MISSED APPROACH:  
Climb to 4000 direct  
BAQFO and hold.

ASOS <b>128.325</b>	KANSAS CITY CENTER <b>124.4 322.4</b>	UNICOM <b>122.7 (CTAF) 0</b>
------------------------	--	---------------------------------

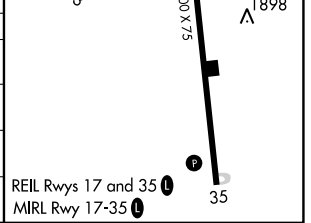


NC-2, 22 FEB 2024 to 21 MAR 2024

NC-2, 22 FEB 2024 to 21 MAR 2024



CATEGORY	A	B	C	D
LPV DA	2117-1	253 (300-1)		NA
LNAV/VNAV DA	2175-1½	311 (400-1½)		NA
LNAV MDA	2220-1	356 (400-1)		NA
CIRCLING	2240-1 376 (400-1)	2320-1 456 (500-1)	2620-2¼ 756 (800-2¼)	NA



WAAS CH <b>99704</b> <b>W35A</b>	APP CRS <b>347°</b>	Rwy Idg TDZE Apt Elev	<b>5000</b> <b>1864</b> <b>1864</b>
--	------------------------	-----------------------------	---

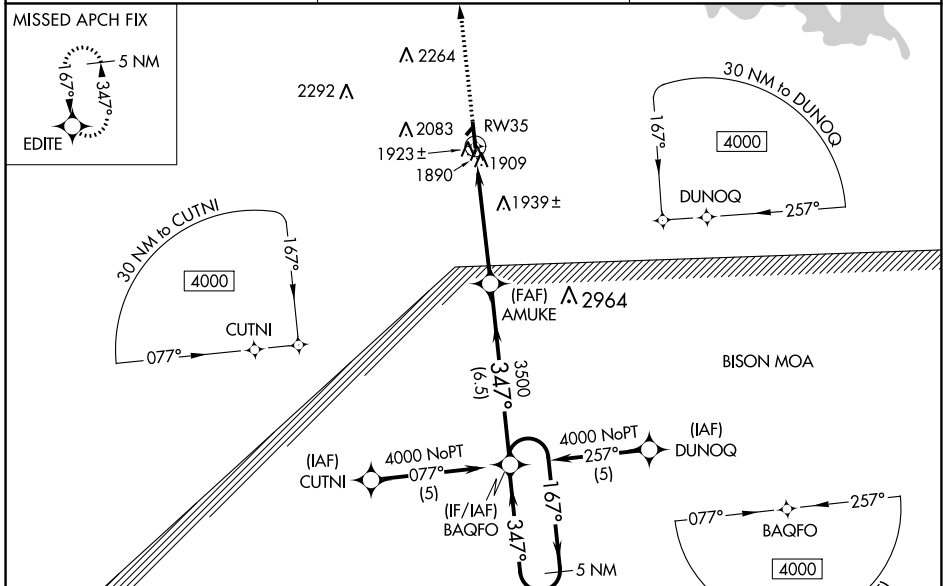
# RNAV (GPS) RWY 35

RUSSELL MUNI (RSL)

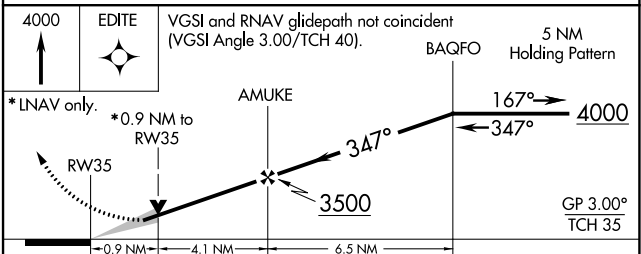
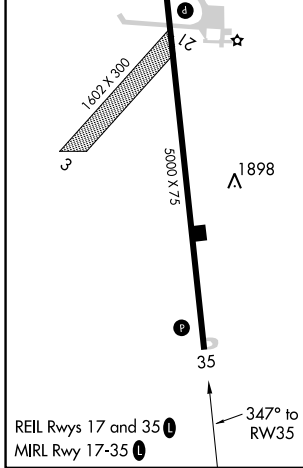
**⚠** Baro-VNAV NA when using Hays altimeter setting. For uncompensated Baro-VNAV systems, LNAV/VNAV NA below -18°C (0°F) or above 54°C (130°F). DME/DME RNP-0.3 NA. VDP NA when using Hays altimeter setting. When local altimeter setting not received, use Hays altimeter setting; increase LPV all Cats DA to 2187 feet, LNAV/VNAV all Cats DA to 2267 feet and all visibilities ¼ SM; increase all MDA 80 feet, LNAV Cat C visibility ⅓ SM and Circling Cat C visibility ¼ SM. Circling NA to Rwys 3 and 21.

**MISSED APPROACH:**  
Climb to 4000 direct EDITE and hold.

ASOS <b>128.325</b>	KANSAS CITY CENTER <b>124.4 322.4</b>	UNICOM <b>122.7 (CTAF) 0</b>
------------------------	--	---------------------------------



ELEV 1864	TDZE 1864
-----------	-----------



CATEGORY	A	B	C	D
LPV DA		2118-1	254 (300-1)	NA
LNAV/VNAV DA		2198-1½	334 (400-1½)	NA
LNAV MDA		2200-1	336 (400-1)	NA
CIRCLING	2240-1 376 (400-1)	2320-1 456 (500-1)	2620-2¼ 756 (800-2¼)	NA

NC-2, 22 FEB 2024 to 21 MAR 2024

NC-2, 22 FEB 2024 to 21 MAR 2024

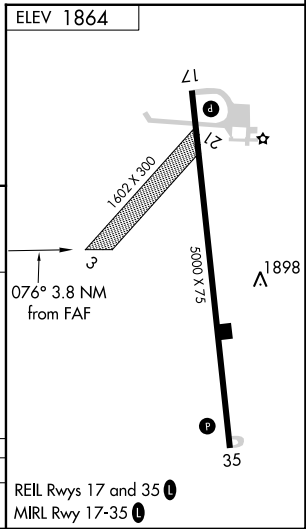
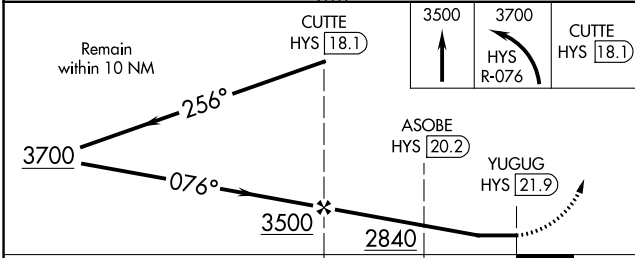
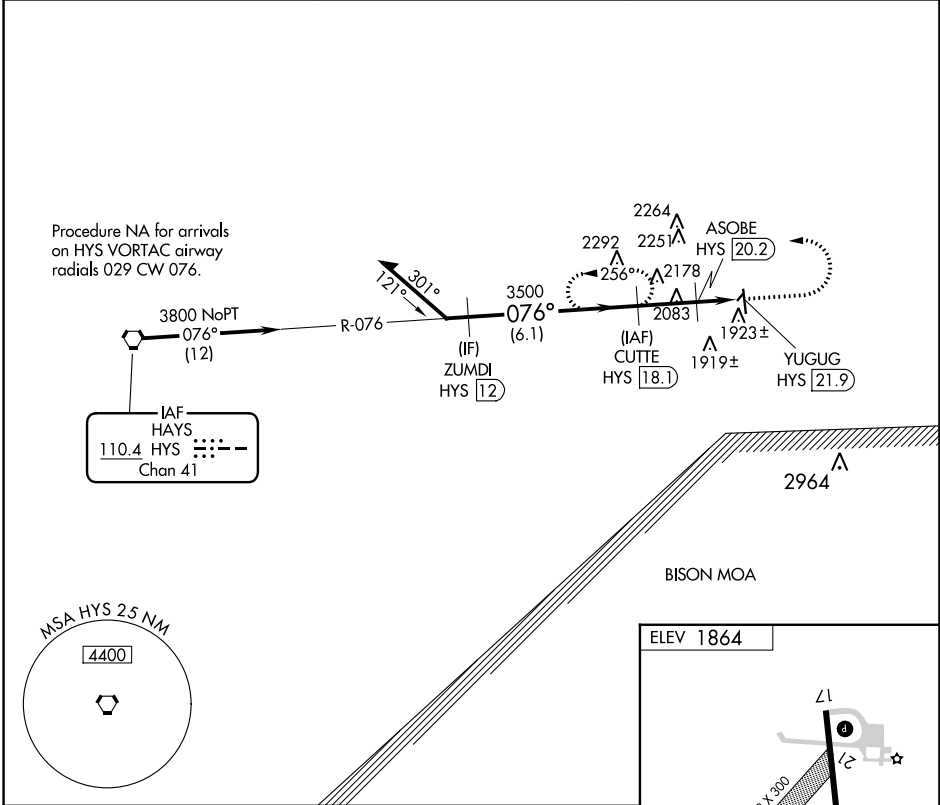
VORTAC HYS <b>110.4</b> Chan <b>41</b>	APP CRS <b>076°</b>	Rwy Idg TDZE Apt Elev <b>N/A</b> <b>N/A</b> <b>1864</b>
--	------------------------	--

**VOR/DME-A**  
RUSSELL MUNI (RSL)

**⚠** When local altimeter setting not received, use Hays altimeter setting; increase all MDA 80 feet and Cat C visibility ¼ SM. Circling NA to Rwy's 3 and 21.

MISSED APPROACH: Climb to 3500 then climbing left turn to 3700 via HYS R-076 to CUTTE/18.1 DME and hold.

ASOS <b>128.325</b>	KANSAS CITY CENTER <b>124.4 322.4</b>	UNICOM <b>122.7 (CTAF)</b>
------------------------	--	-------------------------------



CATEGORY	A	B	C	D
CIRCLING	2240-1 376 (400-1)	2320-1¼ 456 (500-1¼)	2620-2¼ 756 (800-2¼)	NA

NC-2, 22 FEB 2024 to 21 MAR 2024

NC-2, 22 FEB 2024 to 21 MAR 2024