

APP CRS	Rwy Idg	4006
167°	TDZE	442
	Apt Elev	442

RNAV (GPS) RWY 17

RUSK COUNTY (R.F.I)

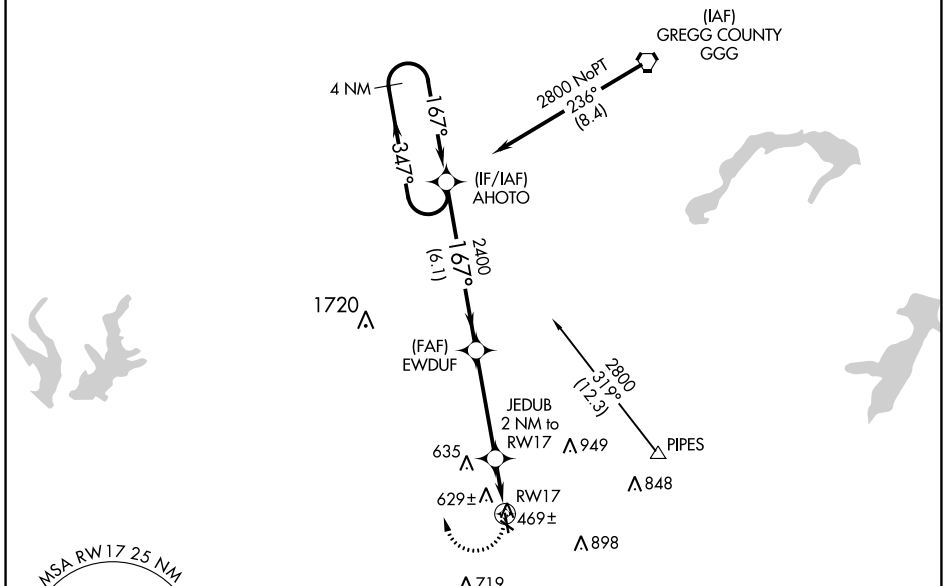
RNP APCH

▼ Rwy 17 helicopter visibility reduction below 1 SM NA. When local altimeter setting not received, use Longview altimeter setting and increase all MDA 60 feet.
 ▲ Rwy 17 Straight-in minimums NA at night. Circling Rwy 12, 17 and 30 NA at night.

MISSED APPROACH: Climbing right turn to 2800 direct AHOTO and hold.

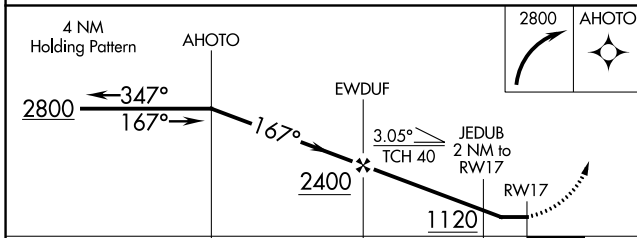
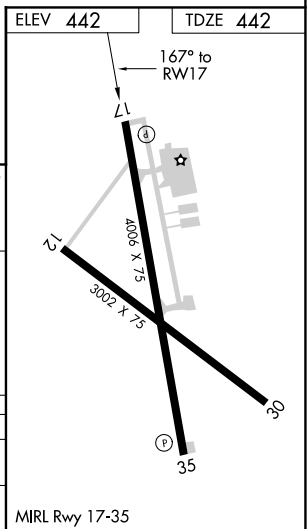
AWOS-3 119,375	LONGVIEW APP CON ★ 124.275 257.975	UNICOM 122.8 (CTAF)
--------------------------	--	-------------------------------

Procedure NA for arrivals at GGG VORTAC on V94 eastbound.



SC-2, 07 OCT 2021 to 04 NOV 2021

SC-2, 07 OCT 2021 to 04 NOV 2021



CATEGORY	A	B	C	D
LNVA MDA	980-1	538 (600-1)	980-1½ 538 (600-1½)	NA
CIRCLING	980-1	538 (600-1)	1200-2½ 758 (800-2½)	NA

VORTAC GGG 112.9 Chan 76	APP CRS 190°	Rwy Idg TDZE Apt Elev N/A N/A 442
---------------------------------------	------------------------	--

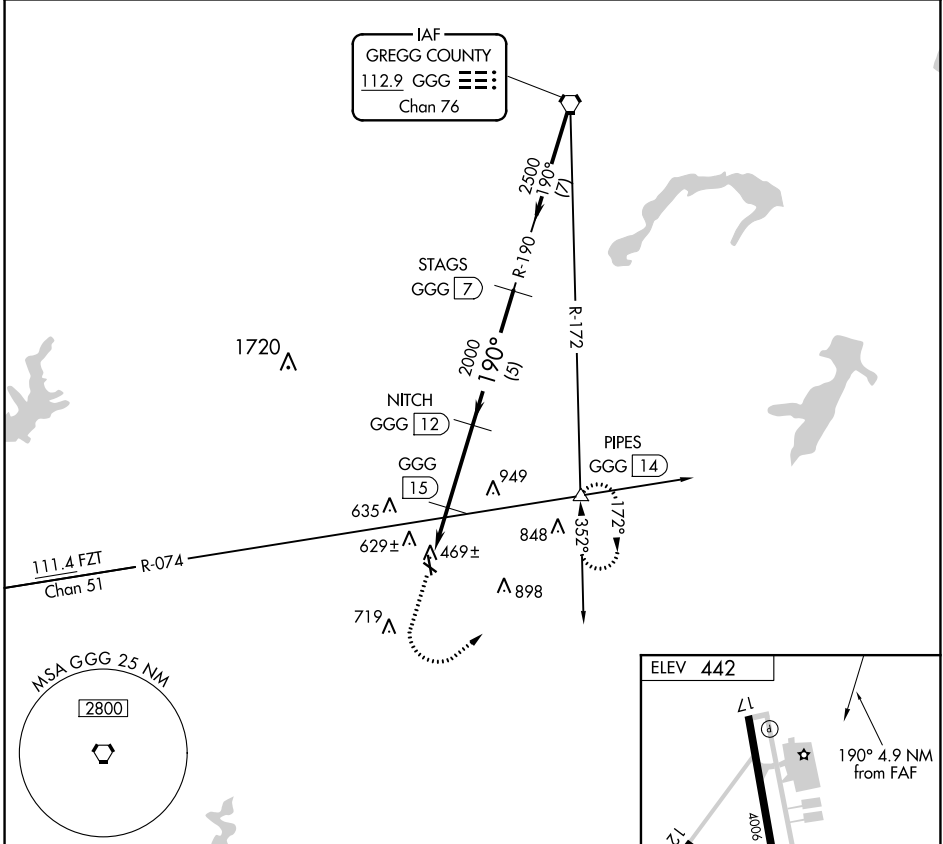
VOR/DME-A

RUSK COUNTY (R.F.I)

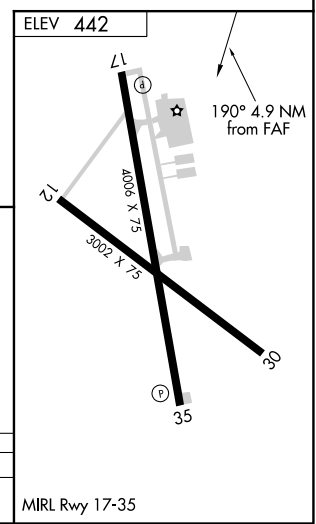
NA When local altimeter setting not received, use Longview altimeter setting and increase all MDAs 60 feet and Circling Cat C visibility 1/4 SM. Circling Rwy 12, 17 and 30 NA at night.

MISSED APPROACH: Climb to 1800 then climbing left turn to 2500 via heading 045° and GGG R-172 to PIPES INT/14 DME and hold.

AWOS-3 119,375	LONGVIEW APP CON ★ 124,275 257,975	UNICOM 122.8 (CTAF)
--------------------------	--	-------------------------------



1800	2500	hdg 045°	GGG R-172	PIPES GGG 14	STAGS GGG 7
		<p>Procedure Turn NA</p>			
1.9 NM		3 NM		5 NM	
CATEGORY	A	B	C	D	
CIRCLING	1220-1 778 (800-1)	1220-1¼ 778 (800-1¼)	1220-2¼ 778 (800-2¼)	NA	



SC-2, 07 OCT 2021 to 04 NOV 2021

SC-2, 07 OCT 2021 to 04 NOV 2021