

WAAS CH 72727 W25A	APP CRS 247°	Rwy ldg TDZE Apt Elev	5500 595 595
----------------------------------------	------------------------	-----------------------------	-----------------------------------------

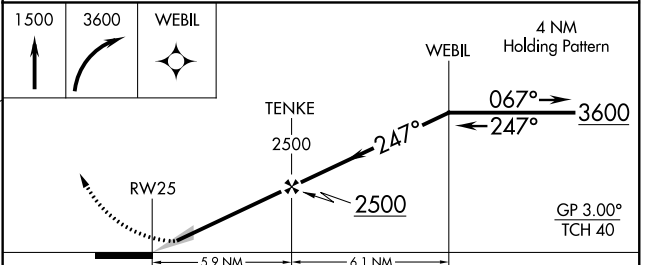
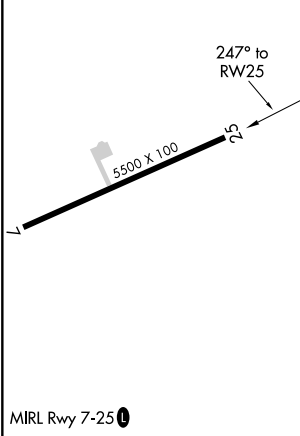
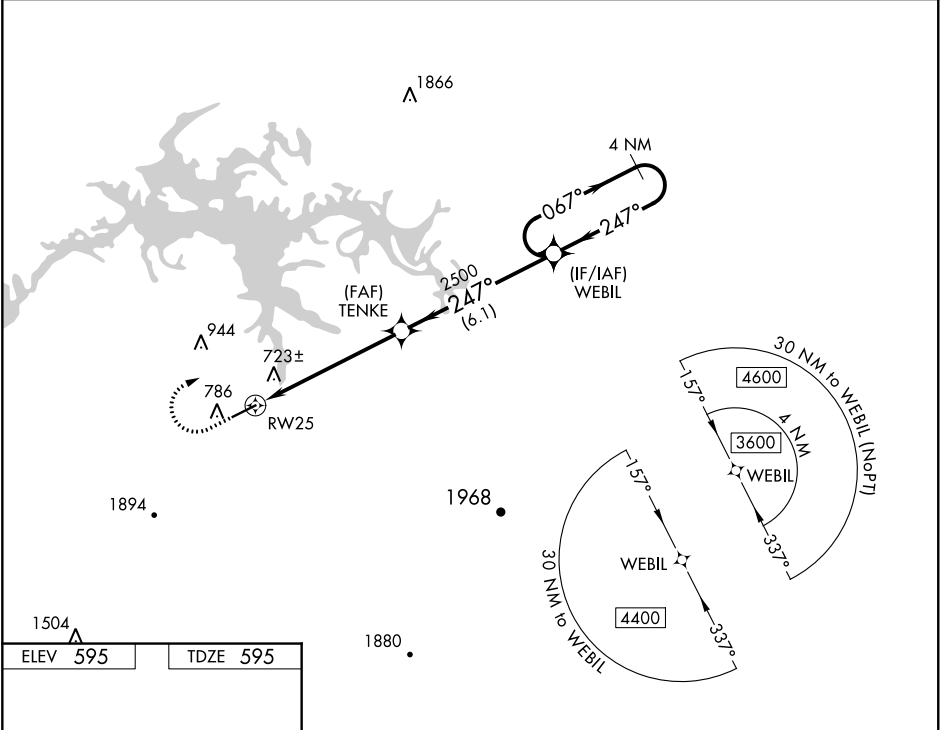
RNAV (GPS) RWY 25

CENTRE-PIEDMONT CHEROKEE COUNTY RGNL (PYP)

NA Baro-VNAV NA. DME/DME RNP-0.3 NA. Use Gadsden altimeter setting, when not received, use Anniston altimeter setting and increase all DA/MDA 20 feet.

MISSED APPROACH: Climb to 1500 then climbing right turn to 3600 direct WEBIL and hold.

GAD AWOS-3PT 127.825	ATLANTA CENTER 124.5 270.325	CTAF 122.90
--------------------------------	----------------------------------------	-----------------------



CATEGORY	A	B	C	D
LPV DA	856-7/8		261 (300-7/8)	
LNAV/VNAV DA	1064-1 5/8		469 (500-1 5/8)	
LNAV MDA	1180-1 585 (600-1)		1180-1 3/4 585 (600-1 3/4)	
CIRCLING	1180-1 585 (600-1)		1360-2 1/4 765 (800-2 1/4)	2260-3 1665 (1700-3)

SE-4, 08 SEP 2022 to 06 OCT 2022

SE-4, 08 SEP 2022 to 06 OCT 2022

WAAS CH 48927 W07A	APP CRS 067°	Rwy ldg 5500 TDZE 585 Apt Elev 595
----------------------------------------	------------------------	---------------------------------------------------------------

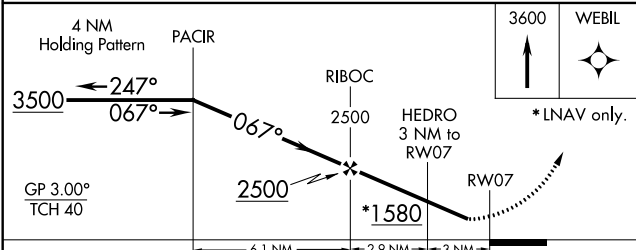
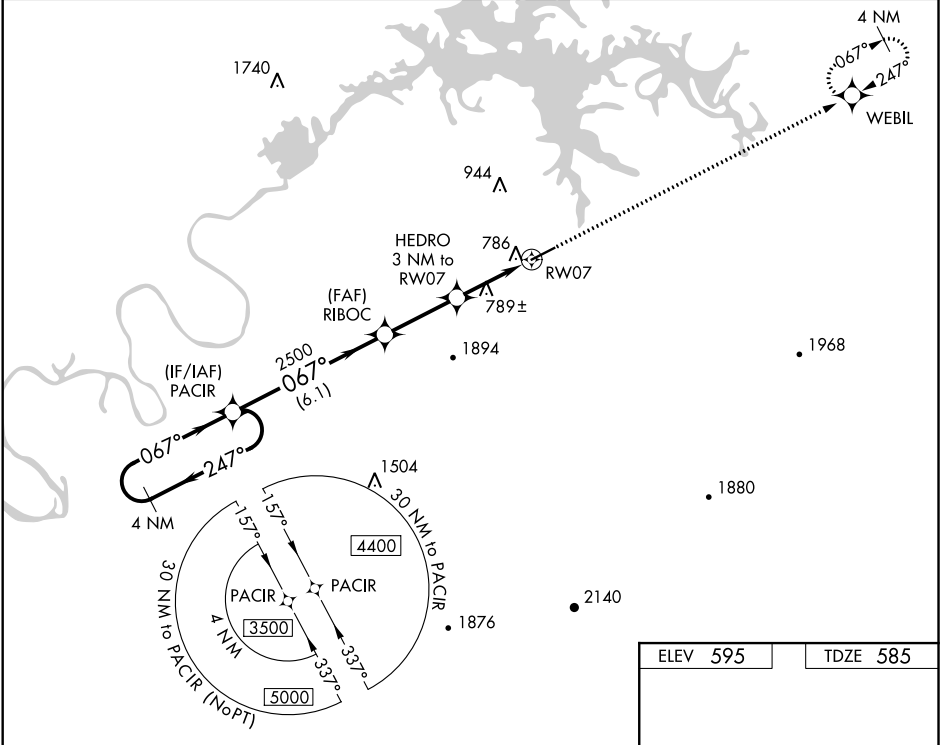
RNAV (GPS) RWY 7

CENTRE-PIEDMONT CHEROKEE COUNTY RGNL (PYP)

▼ Baro-VNAV NA. DME/DME RNP-0.3 NA. Helicopter visibility reduction below 3/4 SM NA.
▲ NA Use Gadsden altimeter setting; when not received use Anniston altimeter setting and increase all DA/MDA 20 feet; increase LPV all Cats and LNAV Cats C/D visibility 1/8 mile.

MISSED APPROACH:
Climb to 3600 direct WEBIL and hold.

GAD AWOS-3PT 127.825	ATLANTA CENTER 124.5 270.325	CTAF 122.90
--------------------------------	----------------------------------------	-----------------------



ELEV 595	TDZE 585
-----------------	-----------------

3600	WEBIL
↑	✦

067° to RW07	5500 X 100
--------------	------------

MIRL Rwy 7-25 **0**

CATEGORY	A	B	C	D
LPV DA		896-1	311 (400-1)	
LNAV/VNAV DA		1009-1½	424 (500-1½)	
LNAV MDA	1100-1	515 (600-1)	1100-1¾	515 (600-1¾)
CIRCLING	1180-1	585 (600-1)	1360-2¼	2260-3
			765 (800-2¼)	1665 (1700-3)

SE-4, 08 SEP 2022 to 06 OCT 2022

SE-4, 08 SEP 2022 to 06 OCT 2022