

WAAS CH <b>99607</b> <b>W17A</b>	APP CRS <b>173°</b>	Rwy Idg TDZE <b>1952</b> Apt Elev <b>1953</b>
--	------------------------	---

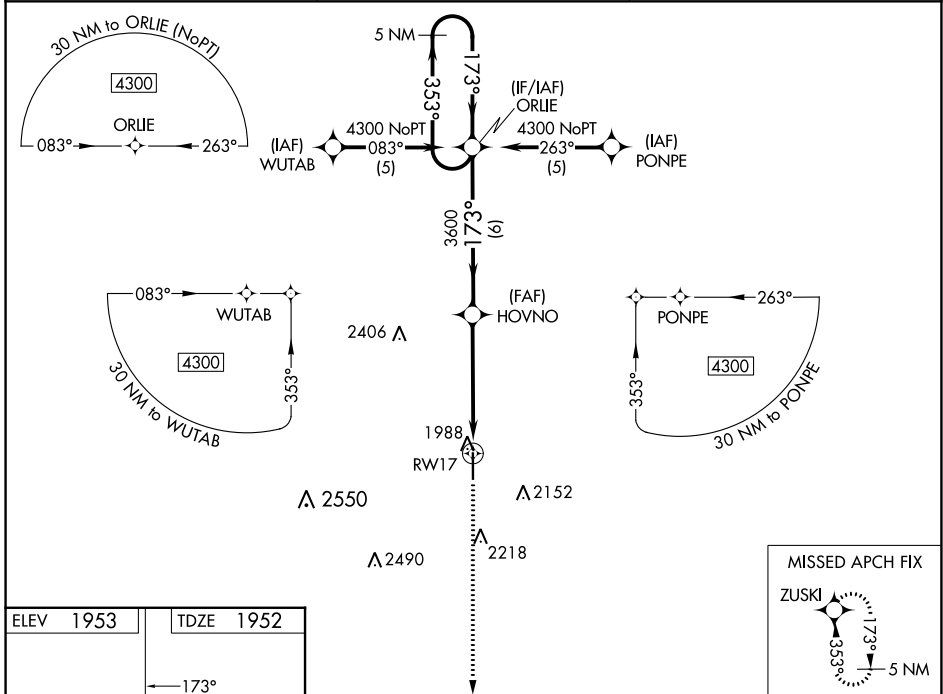
# RNAV (GPS) RWY 17

PRATT RGNL (PTT)

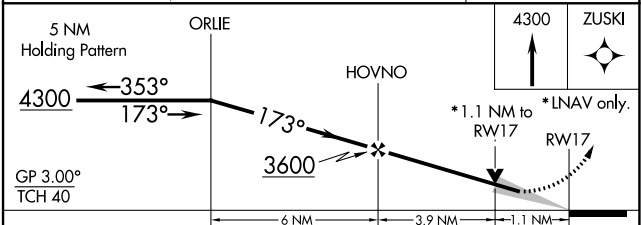
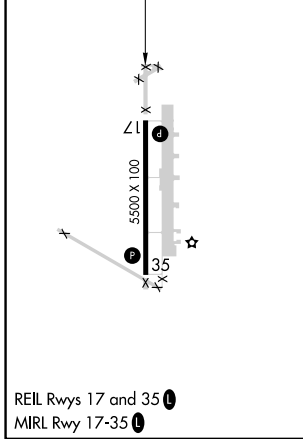
**⚠** For uncompensated Baro-VNAV systems, LNAV/VNAV NA below -18°C (0°F) or above 54°C (130°F). DME/DME RNP-0.3 NA. When local altimeter setting not received, use Great Bend altimeter setting: Increase LPV DA to 2301 Feet and all visibilities ¼ SM; Increase LNAV/VNAV DA to 2356 feet and all visibilities ½ SM; Increase all MDAs 100 feet and visibility Cat C ¼ SM. Baro-VNAV and VDP NA when using Great Bend altimeter setting.

MISSED APPROACH: Climb to 4300 direct ZUSKI and hold.

AWOS-3PT <b>118.725</b>	KANSAS CITY CENTER <b>118.8 322.425</b>	UNICOM <b>122.8 (CTAF) ①</b>
----------------------------	--	---------------------------------



ELEV 1953	TDZE 1952
-----------	-----------



CATEGORY	A	B	C	D
LPV DA		2202-1	250 (300-1)	NA
LNAV/VNAV DA		2257-1	305 (400-1)	NA
LNAV MDA		2340-1	388 (400-1)	NA
CIRCLING	2380-1 427 (500-1)	2420-1 467 (500-1)	2580-1¾ 627 (700-1¾)	NA

NC-2, 22 FEB 2024 to 21 MAR 2024

NC-2, 22 FEB 2024 to 21 MAR 2024

WAAS CH <b>86607</b> W35A	APP CRS <b>353°</b>	Rwy Idg TDZE Apt Elev	<b>5500</b> <b>1946</b> <b>1953</b>
---------------------------------	------------------------	-----------------------------	---

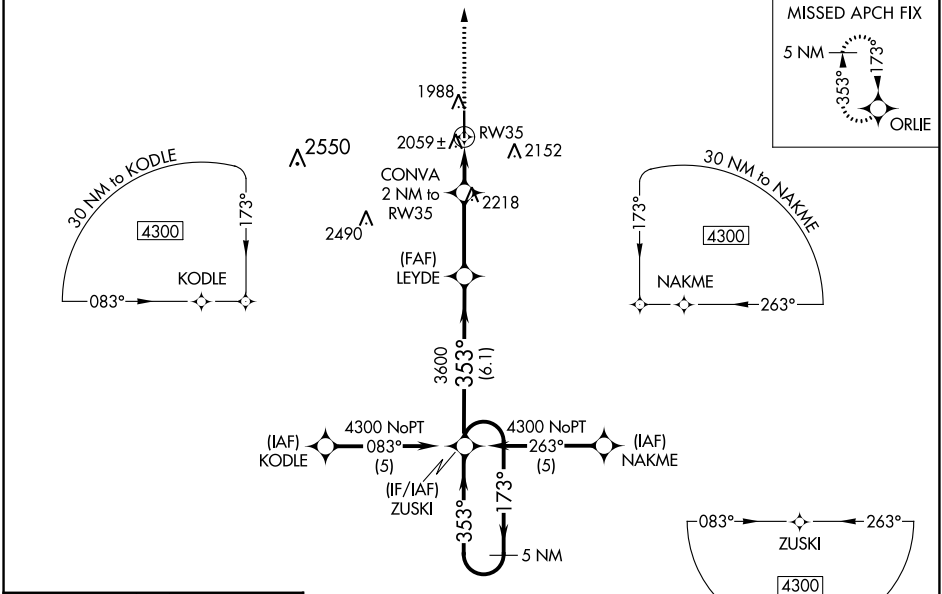
# RNAV (GPS) RWY 35

PRATT RGNL (P'TT)

**A** For uncompensated Baro-VNAV systems, LNAV/VNAV NA below -18°C (0°F) or above 54°C (130°F). DME/DME RNP-0.3 NA. When local altimeter setting not received, use Great Bend altimeter setting: Increase LPV DA to 2295 feet and all visibilities ¼ SM; Increase LNAV/VNAV DA to 2421 feet and all visibilities ½ SM; Increase all MDAs 100 feet and visibility Cat C ¼ SM. Baro-VNAV and VDP NA when using Great Bend altimeter setting.

MISSED APPROACH: Climb to 4300 direct ORLIE and hold.

AWOS-3PT <b>118.725</b>	KANSAS CITY CENTER <b>118.8 322.425</b>	UNICOM <b>122.8 (CTAF) 0</b>
----------------------------	--	---------------------------------

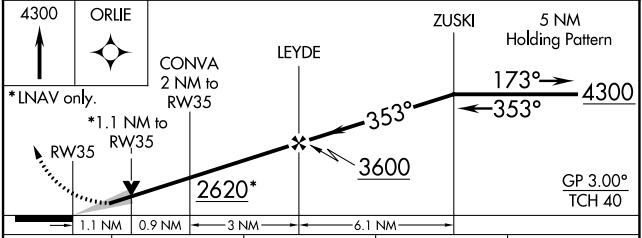
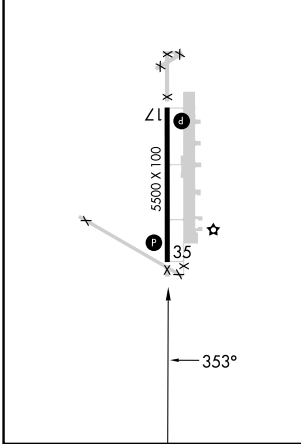


NC-2, 22 FEB 2024 to 21 MAR 2024

NC-2, 22 FEB 2024 to 21 MAR 2024

ELEV 1953	TDZE 1946
-----------	-----------

REIL Rwy 17 and 35  
MIRL Rwy 17-35



CATEGORY	A	B	C	D
LPV DA	2196-1	250 (300-1)		NA
LNAV/VNAV DA	2322-1¼	376 (400-1¼)		NA
LNAV MDA	2320-1	374 (400-1)		NA
CIRCLING	2380-1 427 (500-1)	2420-1 467 (500-1)	2580-1¾ 627 (700-1¾)	NA