

PITTSBURG, KANSAS

AL-981 (FAA)

22195

WAAS CH <b>61130</b> <b>W17A</b>	APP CRS <b>168°</b>	Rwy Idg TDZE Apt Elev	<b>6100</b> <b>936</b> <b>946</b>
--	------------------------	-----------------------------	---

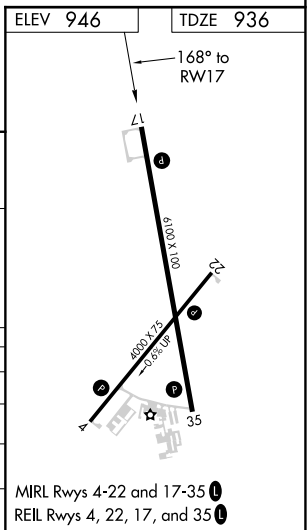
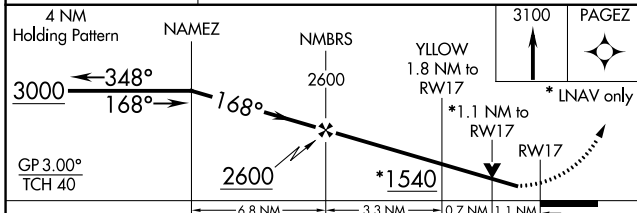
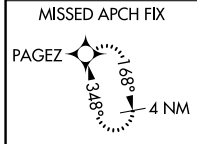
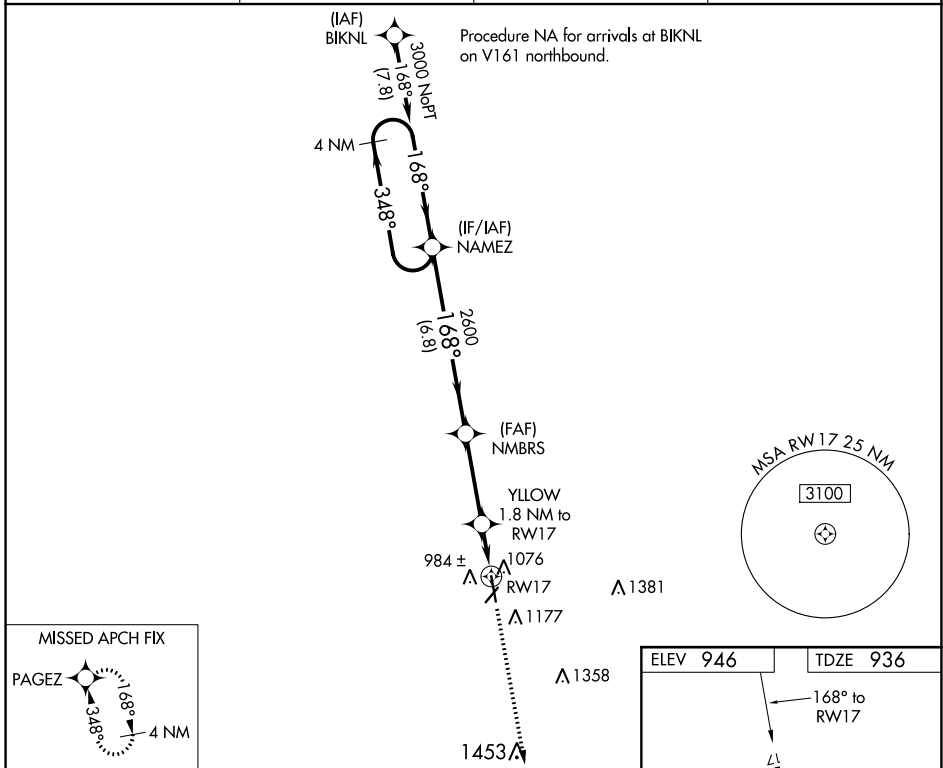
# RNAV (GPS) RWY 17

ATKINSON MUNI (PTS)

**⚠** For uncompensated Baro-VNAV systems, LNAV/VNAV NA below -16°C (4°F) or above 54°C (130°F). DME/DME RNP-0.3 NA. Rwy 17 helicopter visibility reduction below ¾ SM NA.

MISSED APPROACH: Climb to 3100 direct PAGEZ and hold.

AWOS-3PT <b>118.775</b>	KANSAS CITY CENTER <b>128.6 282.325</b>	GCO <b>121.725</b>	UNICOM <b>123.0 (CTAF)</b> <b>📻</b>
----------------------------	--	-----------------------	--



CATEGORY	A	B	C	D
LPV DA	1216-1		280 (300-1)	
LNAV/VNAV DA	1237-1		301 (300-1)	
LNAV MDA	1340-1 404 (400-1)		1340-1½ 404 (400-1½)	
<b>📻</b> CIRCLING	1480-1 534 (600-1)		1520-1½ 574 (600-1½) 1720-2½ 774 (800-2½)	

PITTSBURG, KANSAS  
Amdt 3A 01MAR18

37°27'N-94°44'W

# RNAV (GPS) RWY 17

NC-2, 30 NOV 2023 to 28 DEC 2023

NC-2, 30 NOV 2023 to 28 DEC 2023

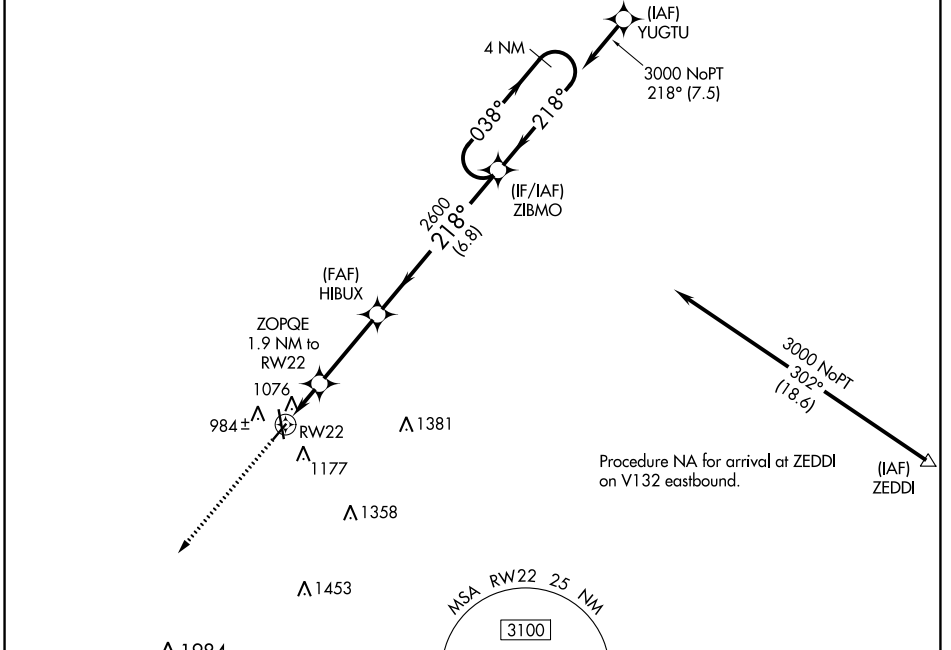
WAAS CH <b>82430</b> <b>W22A</b>	APP CRS <b>218°</b>	Rwy Idg TDZE Apt Elev	<b>4000</b> <b>942</b> <b>946</b>
--	------------------------	-----------------------------	---

# RNAV (GPS) RWY 22

ATKINSON MUNI (PTS)

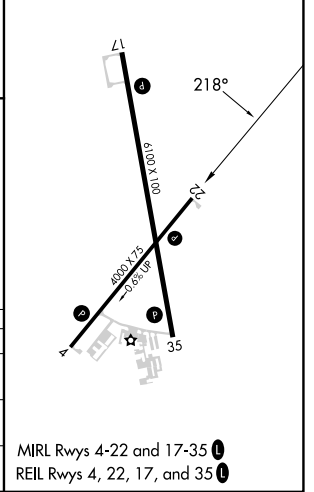
RNP APCH - GPS.		MISSED APPROACH: Climb to 3100 direct EXORY and hold.	
▼ ▲ Rwy 22 helicopter visibility reduction below 3/4 SM NA.			

AWOS-3PT <b>118.775</b>	KANSAS CITY CENTER <b>128.6 282.325</b>	GCO <b>121.725</b>	UNICOM <b>123.0 (CTAF) 0</b>
----------------------------	--	-----------------------	---------------------------------



3100	EXORY	VGSI and descent angles not coincident (VGSI Angle 3.80/TCH 55).		ZIBMO	4 NM Holding Pattern
0.8 NM	1.1 NM	3.2 NM	6.8 NM		

ELEV	946	TDZE	942
------	-----	------	-----



CATEGORY	A	B	C	D
LP MDA	1300-1		358 (400-1)	NA
LNAV MDA	1340-1	398 (400-1)	1340-1 1/8 398 (400-1 1/8)	NA
CIRCLING	1480-1	534 (600-1)	1520-1 1/2 574 (600-1 1/2)	NA

MIRL Rwy 4-22 and 17-35 1  
REIL Rwy 4, 22, 17, and 35 0

NC-2, 30 NOV 2023 to 28 DEC 2023

NC-2, 30 NOV 2023 to 28 DEC 2023

WAAS CH <b>77600</b> W35A	APP CRS <b>348°</b>	Rwy Idg <b>6100</b> TDZE <b>929</b> Apt Elev <b>946</b>
---------------------------------	------------------------	---

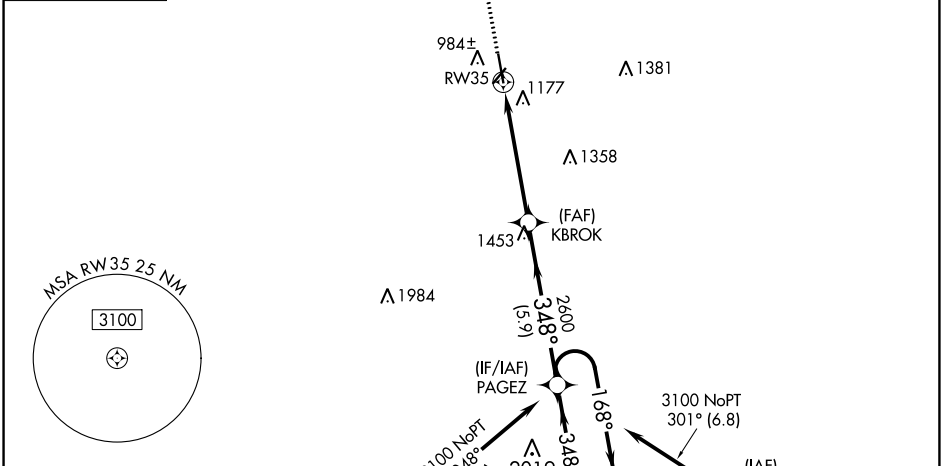
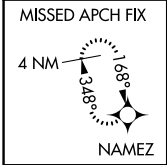
# RNAV (GPS) RWY 35

ATKINSON MUNI (PTS)

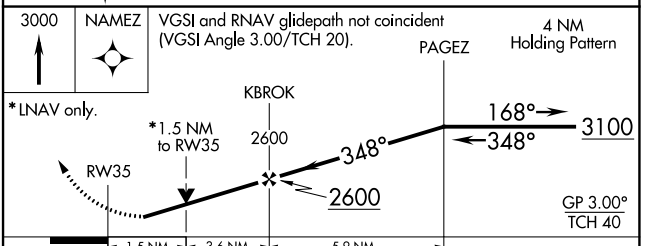
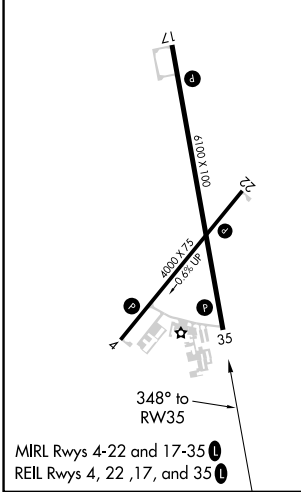
**⚠** For uncompensated Baro-VNAV systems, LNAV/VNAV NA below -16°C (4°F) or above 54°C (130°F). Rwy 35 helicopter visibility reduction below ¾ SM NA. DME/DME RNP-0.3 NA.

MISSED APPROACH: Climb to 3000 direct NAMEZ and hold.

AWOS-3PT <b>118.775</b>	KANSAS CITY CENTER <b>128.6 282.325</b>	GCO <b>121.725</b>	UNICOM <b>123.0 (CTAF) 0</b>
----------------------------	--	-----------------------	---------------------------------



ELEV 946	TDZE 929
----------	----------



CATEGORY	A	B	C	D
LPV DA	1179-1 250 (300-1)			
LNAV/VNAV DA	1338-1½ 409 (400-1½)			
LNAV MDA	1440-1	511 (500-1)	1440-1¾	511 (500-1¾)
<input checked="" type="checkbox"/> CIRCLING	1480-1	534 (600-1)	1520-1½	1720-2½ 574 (600-1½) 774 (800-2½)

NC-2, 30 NOV 2023 to 28 DEC 2023

NC-2, 30 NOV 2023 to 28 DEC 2023

WAAS CH <b>53430</b> <b>W04A</b>	APP CRS <b>038°</b>	Rwy Idg <b>4000</b> TDZE <b>946</b> Apt Elev <b>946</b>
--	------------------------	---

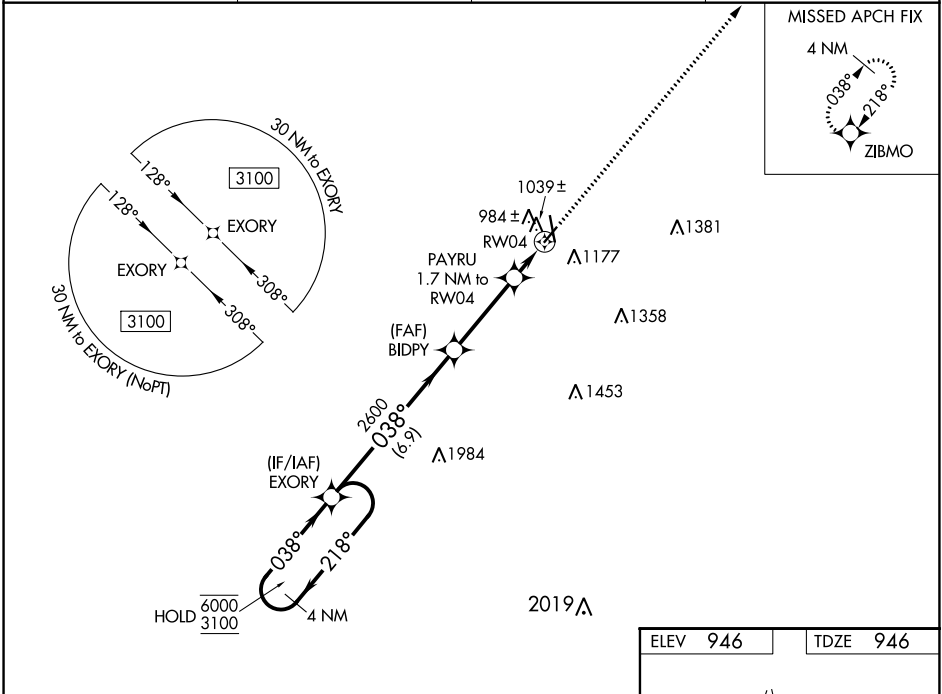
# RNAV (GPS) RWY 4

ATKINSON MUNI (PTS)

RNP APCH-GPS.  
 ▼ For uncompensated Baro-VNAV systems, LNAV/VNAV NA below -16°C or above 54°C.  
 ▲

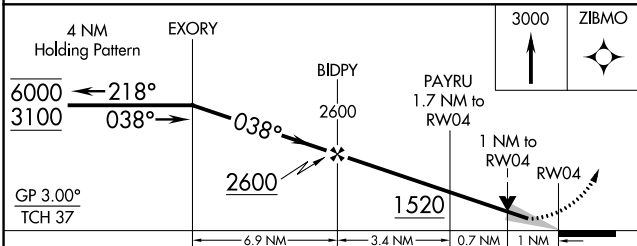
MISSED APPROACH: Climb to 3000 direct ZIBMO and hold.

AWOS-3PT <b>118.775</b>	KANSAS CITY CENTER <b>128.6 282.325</b>	GCO <b>121.725</b>	UNICOM <b>123.0 (CTAF)</b>
----------------------------	--	-----------------------	-------------------------------

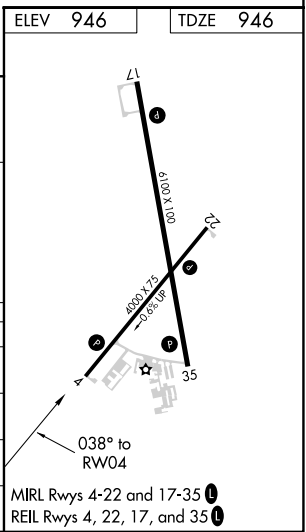


NC-2, 30 NOV 2023 to 28 DEC 2023

NC-2, 30 NOV 2023 to 28 DEC 2023



CATEGORY	A	B	C	D
LPV DA	1196-1	250 (300-1)		NA
LNAV/VNAV DA	1196-1	250 (300-1)		NA
LNAV MDA	1300-1	354 (400-1)		NA
<b>C</b> CIRCLING	1480-1	534 (600-1)	1520-1½ 574 (600-1½)	NA



MIRL Rwy 4-22 and 17-35  
REIL Rwy 4, 22, 17, and 35