


LOC/DME I-PQL 110.1 Chan 38	APP CRS 168°	Rwy Idg 6501 TDZE 17 Apt Elev 17
---	------------------------	---

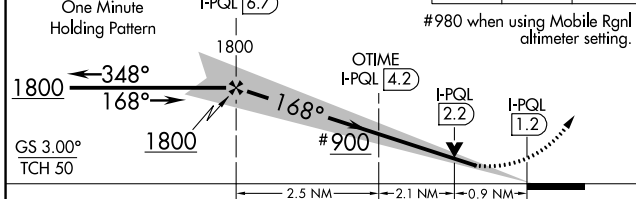
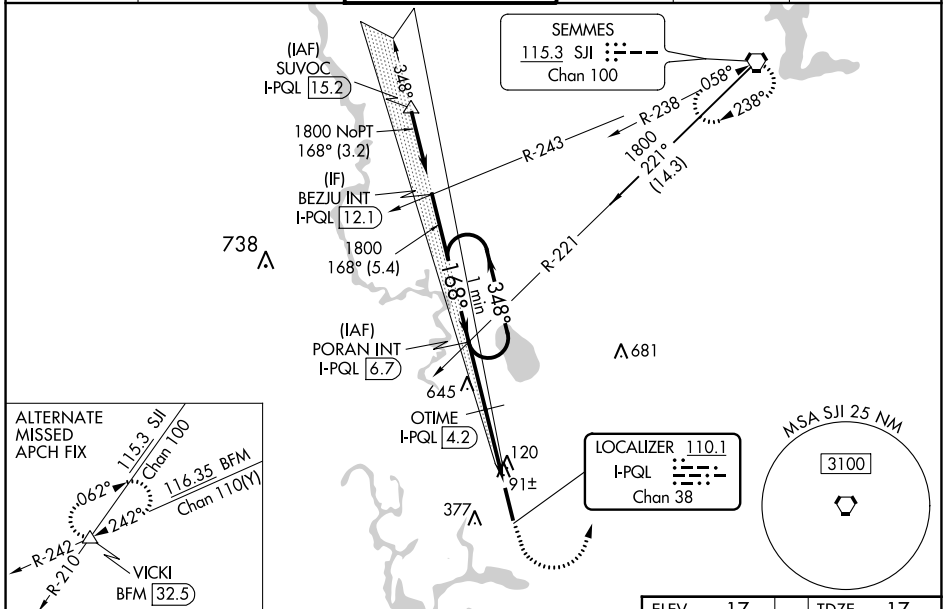
ILS or LOC RWY 17



TRENT LOTT INTL (PQL)

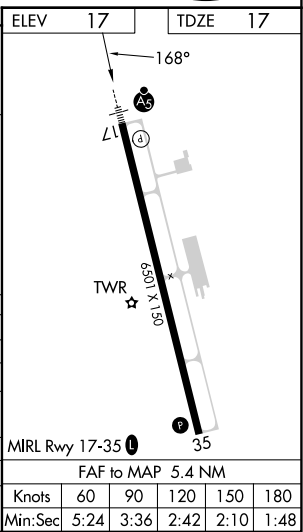
⚠ When local altimeter setting not received, use Mobile Rgnl altimeter setting and increase DA to 292 feet; increase all MDA 80 feet and S-LOC 17 visibility Cat B ¼ SM, increase Circling visibility Cats B and C ¼ SM. OTIME Fix Minimums, increase S-LOC 17 visibility Cats C and D ½ SM and Circling Cats C and D ½ SM. For inop ALS when using Mobile Rgnl altimeter setting increase S-ILS all Cats visibility to ¾ SM.

MALSR  MISSED APPROACH: Climb to 900 then climbing left turn to 2000 direct SJI VORTAC and hold.

ATIS 135.175	MOBILE APP CON ★ 121.0 307.1	TRENT LOTT TOWER ★ 118.575 (CTAF) 	GND CON 121.725	CLNC DEL 121.725	UNICOM 122.8
------------------------	--	---	---------------------------	----------------------------	------------------------



CATEGORY	A	B	C	D
S-ILS 17	217-½ 200 (200-½)			
S-LOC 17	900-¾ 883 (900-¾)	900-2 883 (900-2)		
 CIRCLING	900-1¼ 883 (900-1¼)	900-2¾ 883 (900-2¾)		
OTIME FIX MINIMUMS				
S-LOC 17	360-½ 343 (400-½)	360-¾ 343 (400-¾)		
 CIRCLING	480-1 463 (500-1)	680-1 663 (700-1)	680-1¾ 663 (700-1¾)	680-2 663 (700-2)



SC-4, 22 FEB 2024 to 21 MAR 2024

SC-4, 22 FEB 2024 to 21 MAR 2024

WAAS CH 58204 W17A	APP CRS 168°	Rwy Idg 6501 TDZE 17 Apt Elev 17
--	------------------------	---

RNAV (GPS) RWY 17

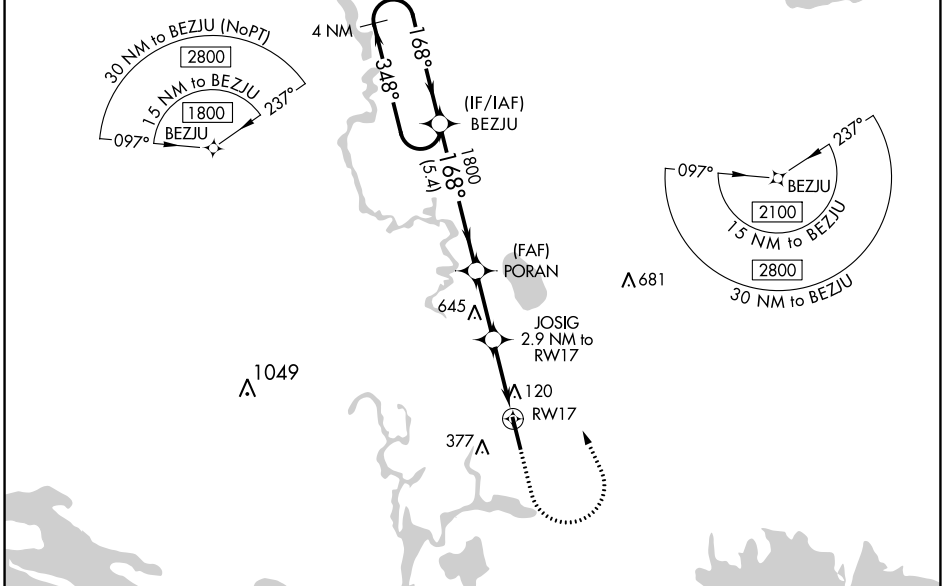
TRENT LOTT INTL (PQL)

RNP APCH - GPS.

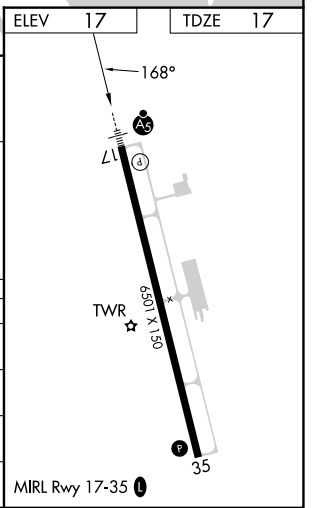
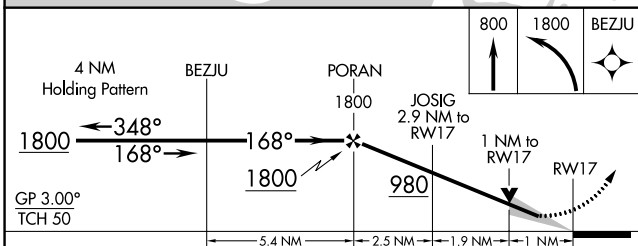
▼ For uncompensated Baro-VNAV systems, LNAV/VNAV NA below -5°C or above 54°C.
 ▲ When local altimeter setting not received, use Mobile Rgnl altimeter setting; increase LPV DA to 292 feet and LNAV/VNAV DA to 357 feet; increase LNAV/VNAV all visibilities 1/8 SM. Increase all MDA 80 feet and LNAV Cat C/D visibility 1/4 SM and Circling Cat C/D visibility 1/2 SM. Baro-VNAV and VDP NA with Mobile Rgnl altimeter setting. For inop ALS when using Mobile Rgnl altimeter setting increase LPV all Cats visibility to 1/8 SM.

MALSR MISSED APPROACH: Climb to 800 then climbing left turn to 1800 direct BEZJU and hold.

ATIS 135.175	MOBILE APP CON ★ 121.0 307.1	TRENT LOTT TOWER ★ 118.575 (CTAF) 0	GND CON 121.725	CLNC DEL 121.725	UNICOM 122.8
------------------------	--	---	---------------------------	----------------------------	------------------------



ELEV 17	TDZE 17
---------	---------



CATEGORY	A	B	C	D
LPV DA		217-1/2	200 (200-1/2)	
LNAV/VNAV DA		282-1/2	265 (300-1/2)	
LNAV MDA	380-1/2	363 (400-1/2)	380-5/8	363 (400-5/8)
CIRCLING	480-1 463 (500-1)	680-1 663 (700-1)	680-1 3/4 663 (700-1 3/4)	680-2 663 (700-2)

SC-4, 22 FEB 2024 to 21 MAR 2024

SC-4, 22 FEB 2024 to 21 MAR 2024

WAAS CH 72904 W35A	APP CRS 348°	Rwy Idg 6501 TDZE 17 Apt Elev 17
--	------------------------	---

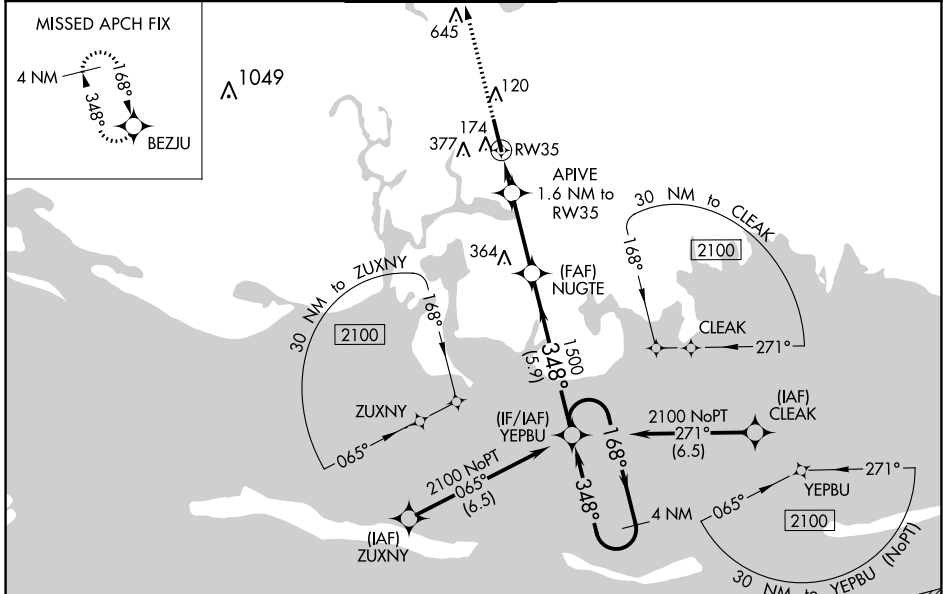
RNAV (GPS) RWY 35

TRENT LOTT INTL (PQL)

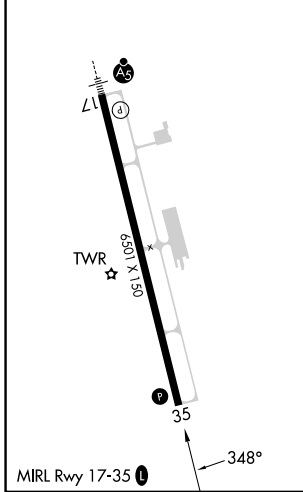
Baro-VNAV NA when using Mobile Rgnl altimeter setting. For uncompensated Baro-VNAV systems, LNAV/VNAV NA below -5°C (23°F) or above 54°C (130°F). DME/DME RNP-0.3 NA. When local altimeter setting not received, use Mobile Rgnl altimeter setting and increase LPV DA to 342 feet, LNAV/VNAV DA to 422 feet, and all MDA 80 feet; increase LPV and LNAV/VNAV visibility ¼ mile all Cts. Increase LNAV visibility Cts C/D ½ mile and Circling visibility Cts C/D ½ mile.

MISSED APPROACH: Climb to 1800 direct BEZJU and hold.

ATIS 135.175	MOBILE APP CON ★ 121.0 307.1	TRENT LOTT TOWER ★ 118.575 (CTAF)	GND CON 121.725	CLNC DEL 121.725	UNICOM 122.8
------------------------	--	---	---------------------------	----------------------------	------------------------



ELEV 17	TDZE 17
---------	---------



CATEGORY	A	B	C	D
LPV DA		267- ⁷ / ₈	250 (300- ⁷ / ₈)	
LNAV/VNAV DA		347-1 ¹ / ₈	330 (400-1 ¹ / ₈)	
LNAV MDA	440-1	423 (500-1)	440-1 ¹ / ₄	423 (500-1 ¹ / ₄)
CIRCLING	480-1 463 (500-1)	680-1 663 (700-1)	680-1 ³ / ₄ 663 (700-1 ³ / ₄)	680-2 663 (700-2)

RNAV (GPS) RWY 35

SC-4, 22 FEB 2024 to 21 MAR 2024

SC-4, 22 FEB 2024 to 21 MAR 2024