

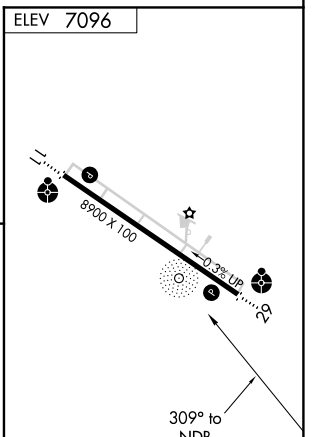
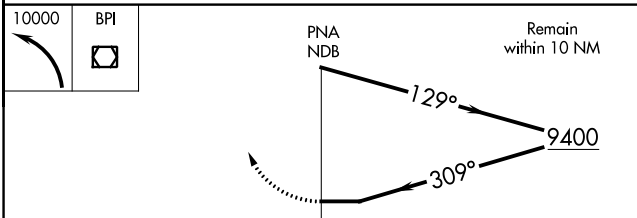
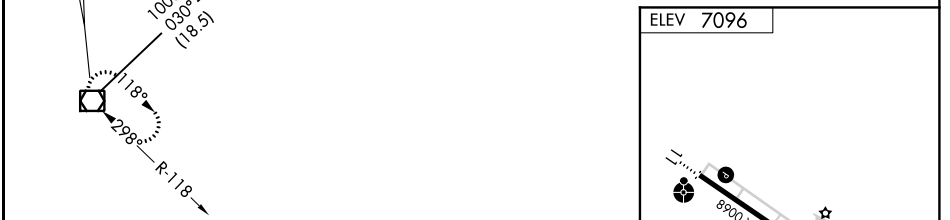
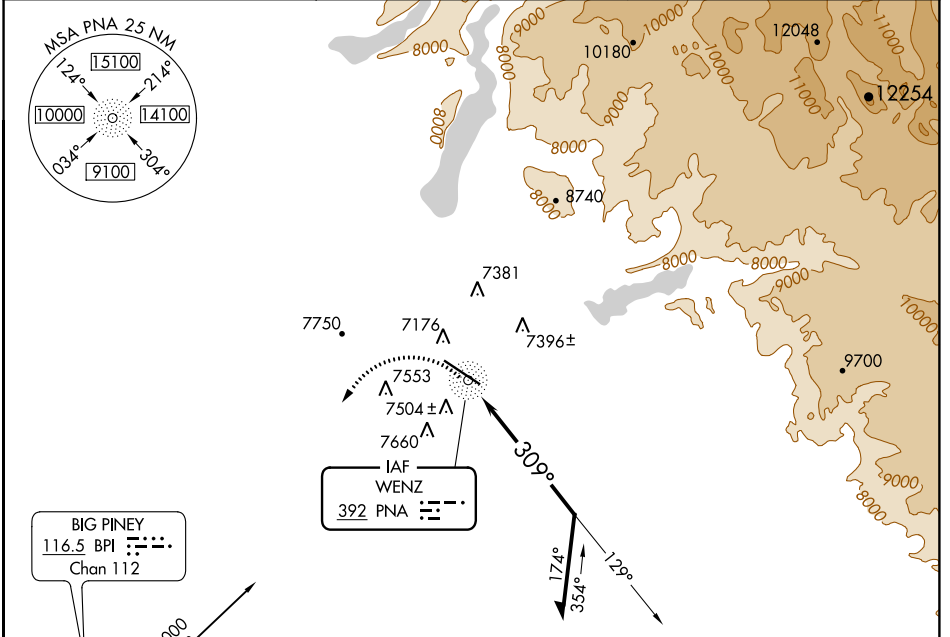
NDB PNA 392	APP CRS 309°	Rwy Idg TDZE Apt Elev N/A N/A 7096
-----------------------	------------------------	--

NDB-A
RALPH WENZ FLD (P.N.A)

⚠ When local altimeter setting not received, use Miley Meml Fld altimeter setting and increase all MDA 60 feet.

⚠ MISSED APPROACH: Climbing left turn to 10000 direct BPI VOR/DME and hold.

AWOS-3 118.325	SALT LAKE CENTER 128.35 239.25	UNICOM 122.8 (CTAF) ⓪
--------------------------	--	--



CATEGORY	A	B	C	D	
CIRCLING	7940-1¼	844 (900-1¼)	8180-3 1084 (1100-3)	8260-3 1164 (1200-3)	MIRL Rwy 11-29 ⓪ REIL Rwys 11 and 29 ⓪

NW-1, 11 AUG 2022 to 08 SEP 2022

NW-1, 11 AUG 2022 to 08 SEP 2022

WAAS CH 58326 W11A	APP CRS 110°	Rwy Idg TDZE Apt Elev	8900 7096 7096
--	------------------------	-----------------------------	---

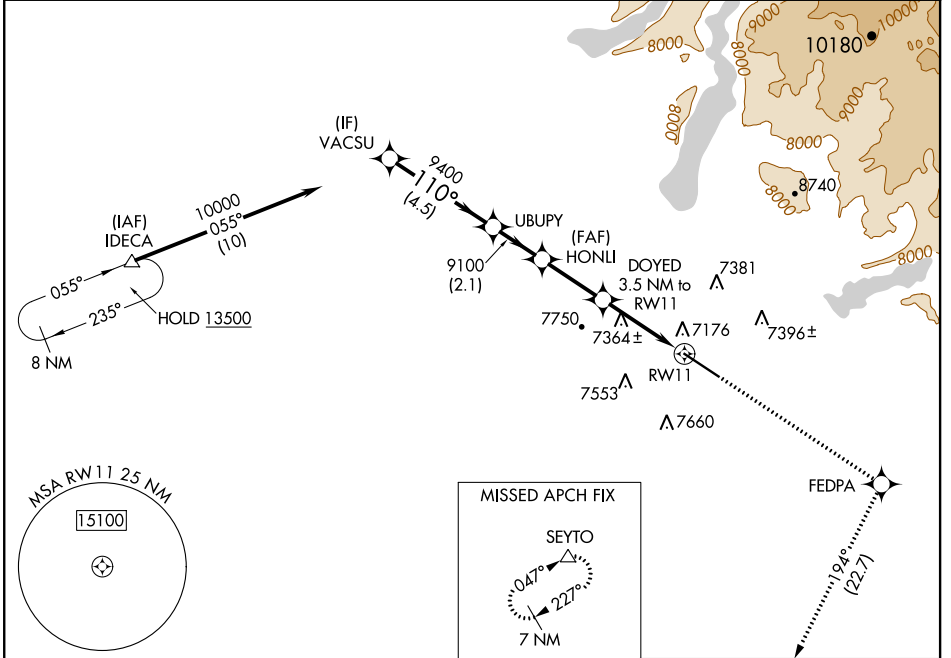
RNAV (GPS) RWY 11

RALPH WENZ FLD (PNA)

▼ Baro-VNAV NA. When local altimeter setting not received, use Big Piney altimeter setting and increase LPV DA to 7404 feet and all visibilities ¼ SM; increase LNAV/VNAV DA to 7413 feet and all visibilities ¼ SM; increase all MDA 60 feet and LNAV Cat C/D visibility ¼ SM. Circling NA south of Rwy 11/29. DME/DME RNP-0.3 NA. VDP NA with Big Piney altimeter setting.

ODALS MISSED APPROACH: Climb to 10000 direct FEDPA and on track 194° to SEYTO and hold.

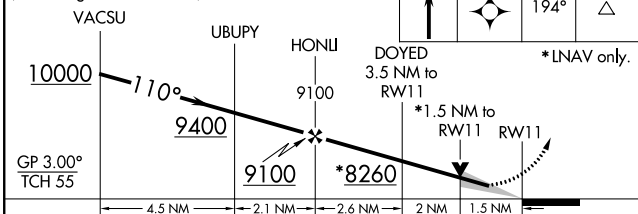
AWOS-3 118.325	SALT LAKE CENTER 128.35 239.25	UNICOM 122.8 (CTAF)
--------------------------	--	-------------------------------



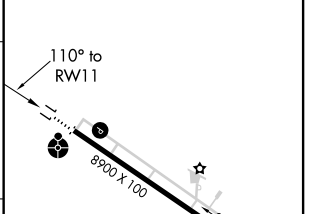
NW-1, 11 AUG 2022 to 08 SEP 2022

NW-1, 11 AUG 2022 to 08 SEP 2022

VGSI and RNAV glidepath not coincident (VGSI Angle 2.83/TCH 40).



ELEV 7096	TDZE 7096
-----------	-----------



CATEGORY	A	B	C	D
LPV DA		7346-¾	250 (300-¾)	
LNAV/VNAV DA		7355-¾	259 (300-¾)	
LNAV MDA	7620-1	524 (600-1)	7620-1½	524 (600-1½)
CIRCLING	7640-1	544 (600-1)	7840-2¼ 744 (800-2¼)	7980-3 884 (900-3)


MIRL Rwy 11-29 REIL Rwy 11 and 29

WAAS CH 40426 W29A	APP CRS 291°	Rwy ldg TDZE Apt Elev	8900 7078 7096
--	------------------------	-----------------------------	---

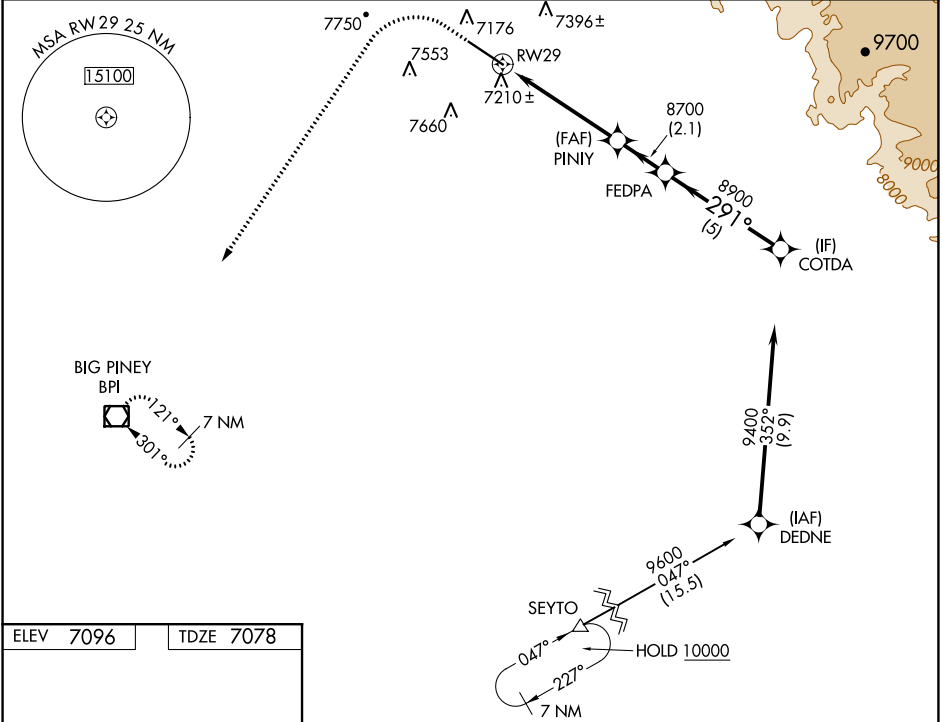
RNAV (GPS) RWY 29

RALPH WENZ FLD (PNA)

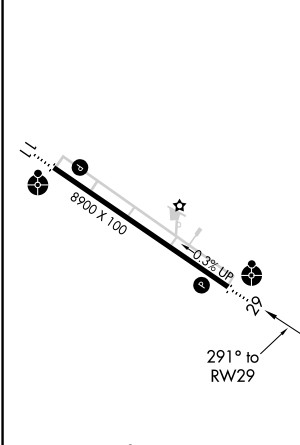
⚠ Baro-VNAV NA. When local altimeter setting not received, use Big Piney altimeter setting and increase LPV DA to 7386 feet and all visibilities 1/4 SM; increase LNAV/VNAV DA to 7664 feet and all visibilities 1/8 SM; increase all MDA 60 feet and LNAV Cats C/D visibility 1/4 SM. Circling NA south of Rwy 11/29. DME/DME RNP-0.3 NA. Helicopter visibility reduction below 3/4 SM NA. VDP NA with Big Piney altimeter setting.



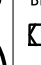

ODALS  MISSED APPROACH: Climb to 7600 then climbing left turn to 10000 direct BPI VOR/DME and hold.



AWOS-3 118.325	SALT LAKE CENTER 128.35 239.25	UNICOM 122.8 (CTAF) 
--------------------------	--	---



ELEV 7096	TDZE 7078
-----------	-----------



7600	10000	BPI	VGSI and RNAV glidepath not coincident (VGSI Angle 2.83/TCH 40).	COTDA
				
*LNAV only.		*1.5 NM to RWY 29	PINY	FEDPA
			8700	8900
1.5 NM		3.5 NM	2.1 NM	5 NM
CATEGORY	A	B	C	D
LPV DA	7328-3/4 250 (300-3/4)			
LNAV/VNAV DA	7606-1 3/4 528 (600-1 3/4)			
LNAV MDA	7600-1	522 (600-1)	7600-1 1/2	522 (600-1 1/2)
CIRCLING	7640-1	544 (600-1)	7840-2 1/4 744 (800-2 1/4)	7980-3 884 (900-3)

MIRL Rwy 11-29 
REIL Rwy 11 and 29 

NW-1, 11 AUG 2022 to 08 SEP 2022

NW-1, 11 AUG 2022 to 08 SEP 2022