

WAAS CH <b>58134</b> <b>W01A</b>	APP CRS <b>011°</b>	Rwy Idg <b>4412</b> TDZE <b>221</b> Apt Elev <b>221</b>
--	------------------------	---

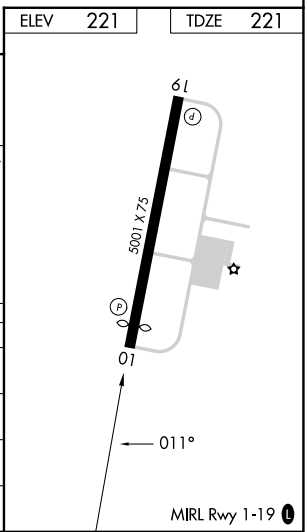
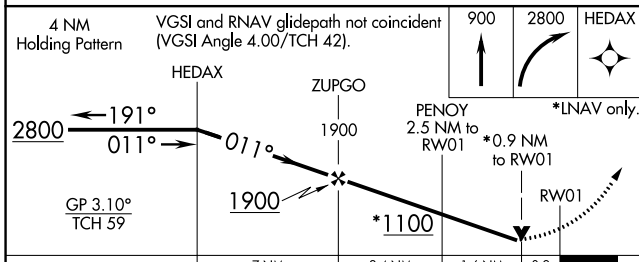
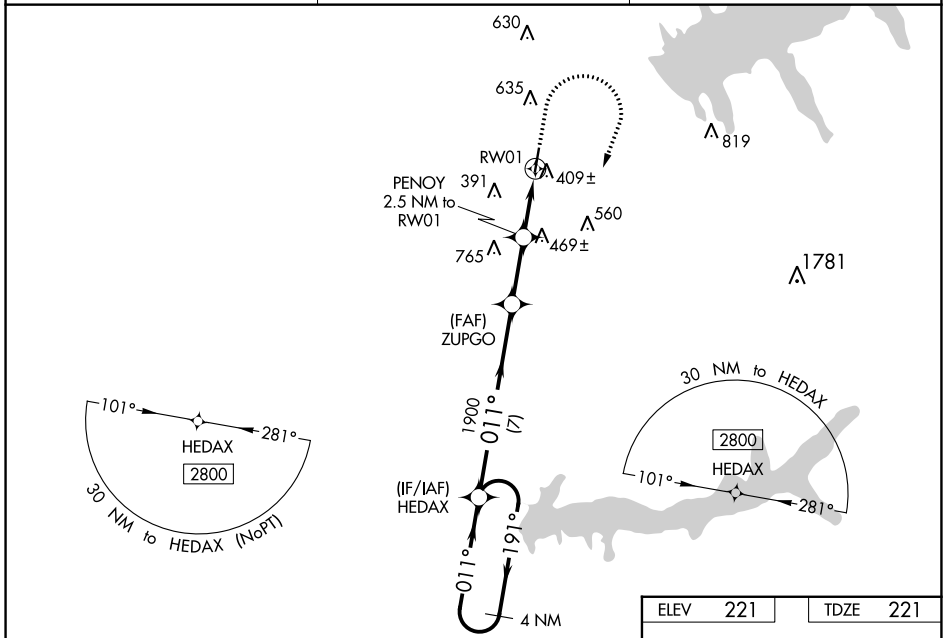
# RNAV (GPS) RWY 1

PANOLA COUNTY (PMU)

**⚠** For uncompensated Baro-VNAV systems, LNAV/VNAV NA below -15°C (5°F) or above 46°C (115°F).  
**⚠** DME/DME RNP-0.3 NA. Baro-VNAV and VDP NA when using University-Oxford altimeter setting.  
**⚠** When local altimeter setting not received, use Oxford altimeter setting and increase LPV DA to 688, LNAV/VNAV DA to 729 and MDA 80 feet, increase LPV and LNAV/VNAV all Cats visibility ¼ mile, LNAV Cats C, D visibility ½ mile, and Circling Cats B, C visibility ¼ mile. Helicopter visibility reduction below ¾ SM NA.

**MISSED APPROACH:** Climb to 900 then climbing right turn to 2800 direct HEDAX and hold.

AWOS-3PT <b>118.225</b>	MEMPHIS CENTER <b>128.5 279.55</b>	UNICOM <b>122.8 (CTAF) 0</b>
----------------------------	---------------------------------------	---------------------------------



CATEGORY	A	B	C	D
LPV DA		614-1¼	393 (400-1¼)	
LNAV/VNAV DA		661-1⅜	440 (500-1⅜)	
LNAV MDA	660-1	439 (500-1)	660-1¼	439 (500-1¼)
<b>C</b> CIRCLING	740-1 519 (600-1)	1000-1 779 (800-1)	1000-2¼ 779 (800-2¼)	1120-3 899 (900-3)

SC-4, 22 FEB 2024 to 21 MAR 2024

SC-4, 22 FEB 2024 to 21 MAR 2024

WAAS CH <b>72834</b> <b>W19A</b>	APP CRS <b>191°</b>	Rwy Idg <b>5001</b> TDZE <b>221</b> Apt Elev <b>221</b>
--	------------------------	---

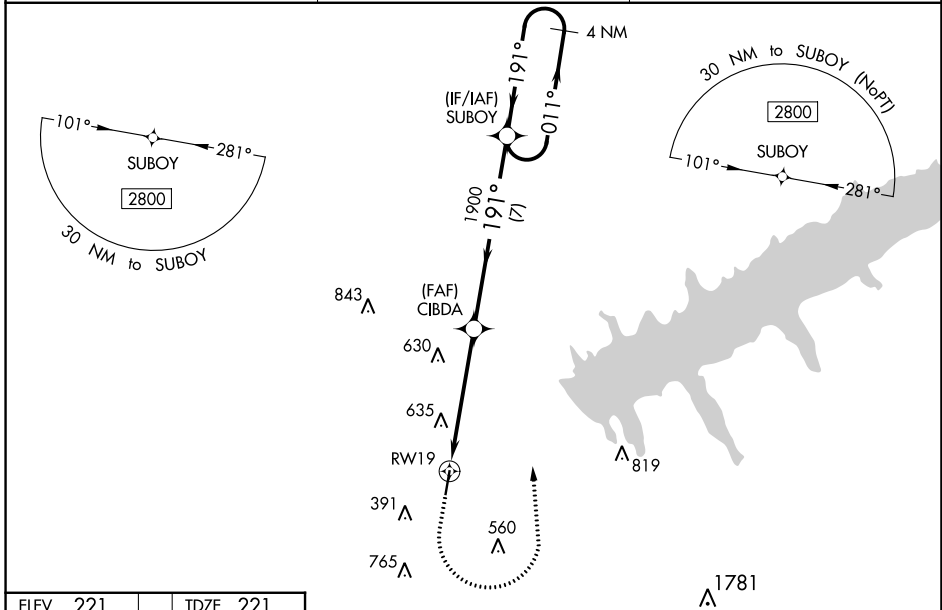
# RNAV (GPS) RWY 19

PANOLA COUNTY (PMU)

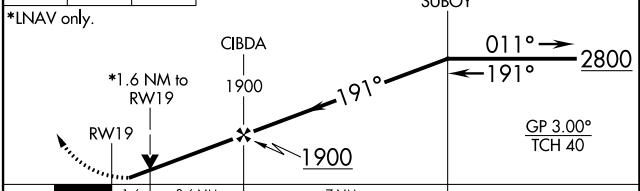
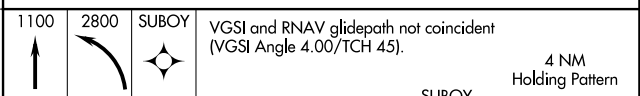
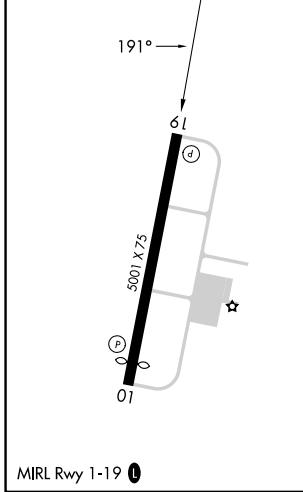
**▼** For uncompensated Baro-VNAV systems, LNAV/VNAV NA below -15°C (5°F) or above 54°C (130°F).  
**▲ NA** DME/DME RNP-0.3 NA. Baro-VNAV and VDP NA when using Oxford altimeter setting.  
 When local altimeter setting not received, use Oxford altimeter setting and increase LPV DA to 571, LNAV/VNAV DA to 1116 and all MDA 80 feet, increase LPV all Cats visibility  $\frac{3}{8}$  mile, LNAV/VNAV all Cats visibility  $\frac{1}{2}$  mile, LNAV Cat B visibility  $\frac{1}{4}$  mile, LNAV Cats C, D visibility  $\frac{1}{2}$  mile, and Circling Cats B, C visibility  $\frac{1}{4}$  mile. Rwy 19 helicopter visibility reduction below  $\frac{3}{4}$  SM NA.

**MISSED APPROACH:**  
 Climb to 1100 then climbing left turn to 2800 direct SUBOY and hold.

AWOS-3PT <b>118.225</b>	MEMPHIS CENTER <b>128.5 279.55</b>	UNICOM <b>122.8 (CTAF) 0</b>
----------------------------	---------------------------------------	---------------------------------



ELEV <b>221</b>	TDZE <b>221</b>
-----------------	-----------------



CATEGORY	A	B	C	D
LPV DA	500- $\frac{7}{8}$		279 (300- $\frac{3}{8}$ )	
LNAV/VNAV DA	1045-3		824 (900-3)	
LNAV MDA	940-1	719 (800-2)	940-2	719 (800-2)
<b>C</b> CIRCLING	940-1 719 (800-1)	1000-1 779 (800-1)	1000-2 $\frac{1}{4}$ 779 (800-2 $\frac{1}{4}$ )	1120-3 899 (900-3)

SC-4, 22 FEB 2024 to 21 MAR 2024

SC-4, 22 FEB 2024 to 21 MAR 2024