

LOC I-PLN 111.3	APP CRS 321°	Rwy Idg 6513
		TDZE 712
		Apt Elev 721

ILS or LOC RWY 32

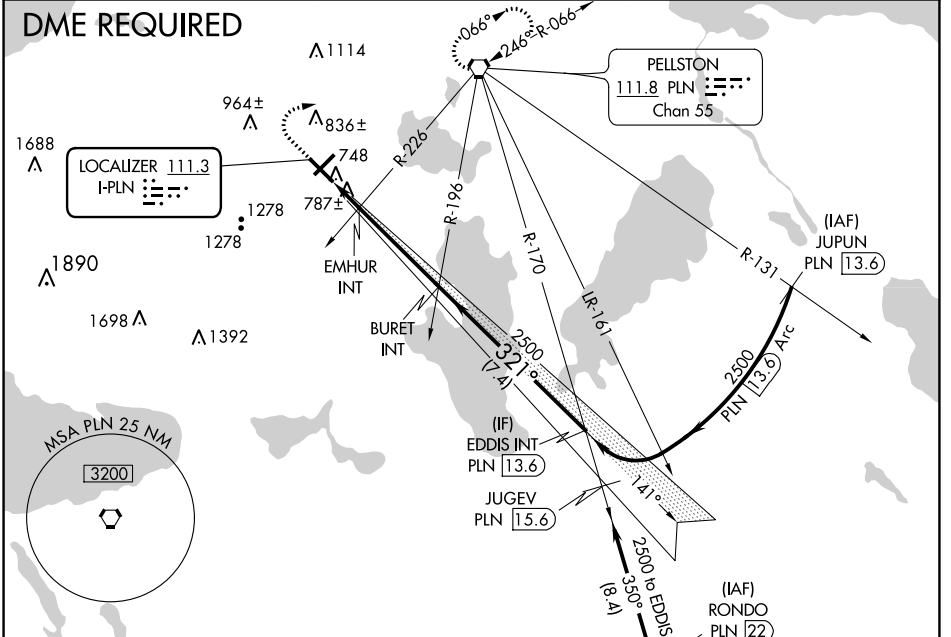
PELLSTON RGNL/EMMET COUNTY (PLN)

When local altimeter setting not received, use Harbor Springs altimeter setting: increase S-ILS 32 DA to 942 feet; increase all MDA 40 feet and visibility S-LOC 32 Cat D and EMHUR fix minimums S-LOC 32 Cat C ¼ SM. Circling Rwy 5, 14, 23 NA at night. Autopilot coupled approach NA below 1868 feet.

MALSR

MISSED APPROACH: Climb to 1400 then climbing right turn to 2600 direct PLN VORTAC and hold.

ASOS 119.025	MINNEAPOLIS CENTER 134.6 354.05	UNICOM 123.0 (CTAF) 0
------------------------	---	---------------------------------



EC-1, 22 FEB 2024 to 21 MAR 2024

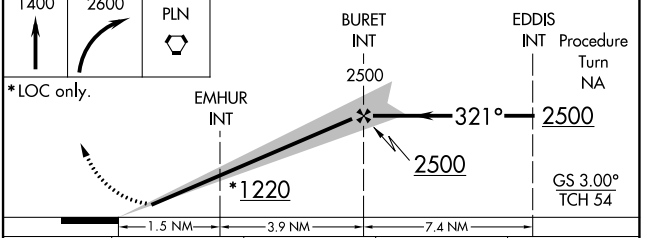
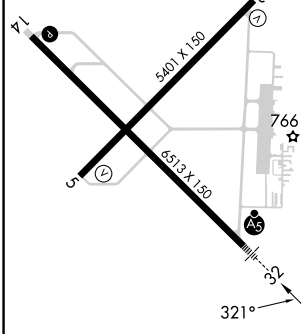
EC-1, 22 FEB 2024 to 21 MAR 2024

ELEV 721	D	TDZE 712
----------	----------	----------

HIRL Rwy 14-32

MIRL Rwy 5-23

REIL Rws 5, 14, and 23



FAF to MAP 5.4 NM					
Knots	60	90	120	150	180
Min:Sec	5:24	3:36	2:42	2:10	1:48

CATEGORY	A	B	C	D
S-ILS 32		912-½	200 (200-½)	
S-LOC 32	1220-½	508 (500-½)	1220-1	508 (500-1)
CIRCLING	1280-1 559 (600-1)	1320-1 599 (600-1)	1560-2½ 839 (900-2½)	1660-3 939 (1000-3)
EMHUR FIX MINIMUMS (DUAL VOR RECEIVERS REQUIRED)				
S-LOC 32	1080-½ 368 (400-½)			1080-¾ 368 (400-¾)
CIRCLING	1280-1 559 (600-1)	1320-1 599 (600-1)	1560-2½ 839 (900-2½)	1660-3 939 (1000-3)

WAAS CH 81915 W23A	APP CRS 231°	Rwy Idg TDZE Apt Elev	5395 721 721
--	------------------------	-----------------------------	---

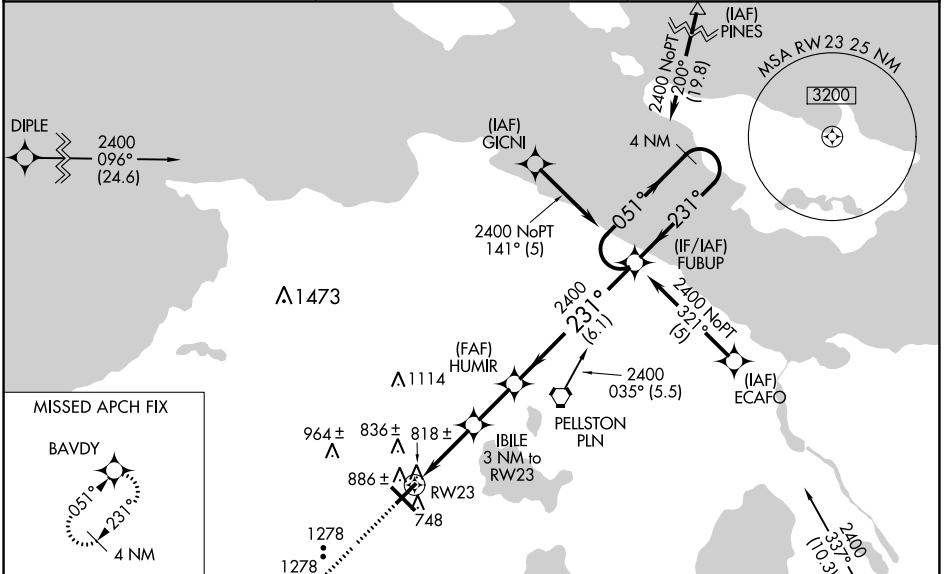
RNAV (GPS) RWY 23

PELLSTON RGNL/EMMET COUNTY (PLN)

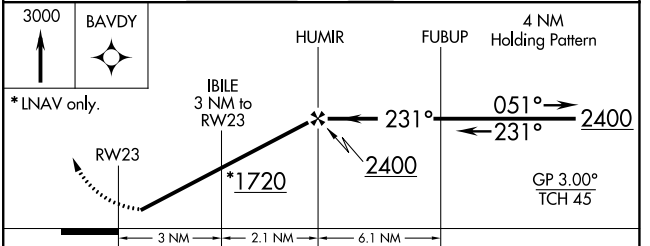
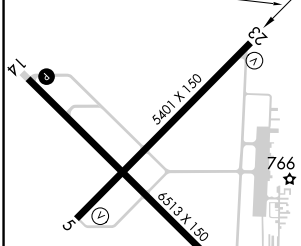
⚠ Baro-VNAV NA when using Harbor Springs altimeter setting. For uncompensated Baro-VNAV systems, LNAV/VNAV NA below -16°C (4°F) or above 47°C (116°F). DME/DME RNP-0.3 NA. Rwy 23 helicopter visibility reduction below 3/4 SM NA. When local altimeter setting not received, use Harbor Springs altimeter setting; increase LPV DA to 1087 feet, LNAV/VNAV DA to 1139 feet and all visibilities 1/2 SM; increase all MDA 40 feet. Circling Rwy 5, 14, 23 NA at night.

MISSED APPROACH:
Climb to 3000 direct BAVDY and hold.

ASOS 119.025	MINNEAPOLIS CENTER 134.6 354.05	UNICOM 123.0 (CTAF) 0
------------------------	---	---------------------------------



ELEV 721	D	TDZE 721
----------	----------	----------



CATEGORY	A	B	C	D
LPV DA		1057-1¼	336 (400-1¼)	
LNAV/VNAV DA		1109-1¼	388 (400-1¼)	
LNAV MDA	1240-1	519 (600-1)	1240-1½ 519 (600-1½)	1240-1¾ 519 (600-1¾)
CIRCLING	1280-1 559 (600-1)	1320-1 599 (600-1)	1560-2½ 839 (900-2½)	1660-3 939 (1000-3)

HIRL Rwy 14-32 **0**
MIRL Rwy 5-23 **0**
REIL Rwy 5, 14, and 23 **0**

EC-1, 22 FEB 2024 to 21 MAR 2024

EC-1, 22 FEB 2024 to 21 MAR 2024

WAAS CH 77813 W32A	APP CRS 321°	Rwy Idg 6513 TDZE 712 Apt Elev 721
--	------------------------	---

RNAV (GPS) RWY 32

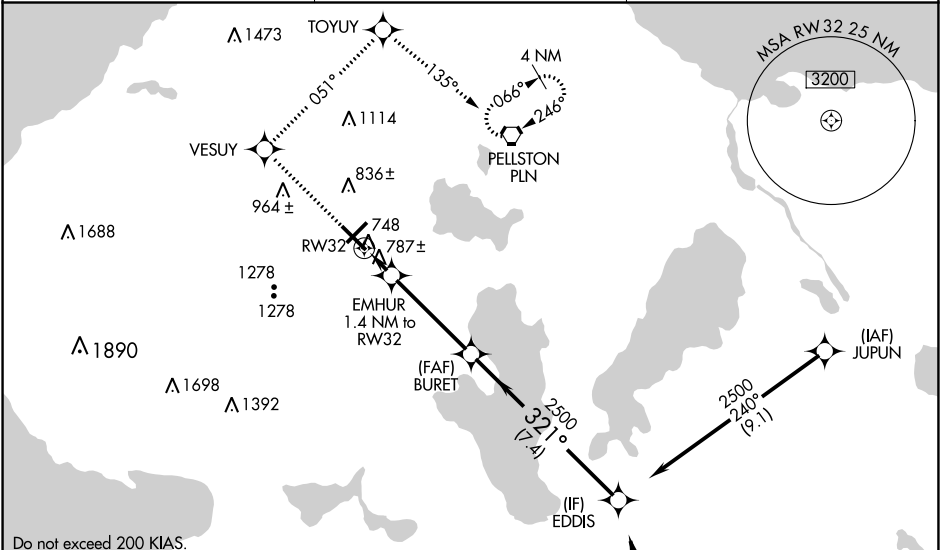
PELLSTON RGNL/EMMET COUNTY (PLN)

⚠ Baro-VNAV NA when using Harbor Springs altimeter setting. For uncompensated Baro-VNAV systems, LNAV/VNAV NA below -16°C (4°F) or above 47°C (116°F). DME/DME RNP-0.3 NA. When local altimeter setting not received, use Harbor Springs altimeter setting and increase LPV DA to 942 feet, LNAV/VNAV DA to 1086 feet, and all MDA 40 feet. Circling Rwy 5, 14, 23 NA at night. For inop MALSRS when using Harbor Springs altimeter setting, increase LNAV visibility Cats C/D to 1 ½ mile.

MALSRS

MISSED APPROACH:
Climb to 2600 direct VESUY and via track 051° to TOYUY and via track 135° to PLN VORTAC and hold.

ASOS 119.025	MINNEAPOLIS CENTER 134.6 354.05	UNICOM 123.0 (CTAF) 0
------------------------	---	---------------------------------



Do not exceed 200 KIAS.

ELEV 721	D	TDZE 712
----------	----------	----------

HIRL Rwy 14-32 **0**
MIRL Rwy 5-23 **0**
REIL Rwy 5, 14, and 23 **0**

Procedure NA for arrivals at RONDO via V609 southbound.

2600	VESUY	tr 051°	TOYUY	tr 135°	PLN	Procedure Turn NA
------	-------	---------	-------	---------	-----	-------------------

* LNAV only.

GP 3.00° TCH 54

CATEGORY	A	B	C	D
LPV DA		912-½	200 (200-½)	
LNAV/VNAV DA		1056-⅝	344 (400-⅝)	
LNAV MDA	1080-½	368 (400-½)	1080-⅝	368 (400-⅝)
CIRCLING	1280-1 559 (600-1)	1320-1 599 (600-1)	1560-2½ 839 (900-2½)	1660-3 939 (1000-3)

EC-1, 22 FEB 2024 to 21 MAR 2024

EC-1, 22 FEB 2024 to 21 MAR 2024

APP CRS	Rwy Idg	5395
051°	TDZE	716
	Apt Elev	721

RNAV (GPS) RWY 5

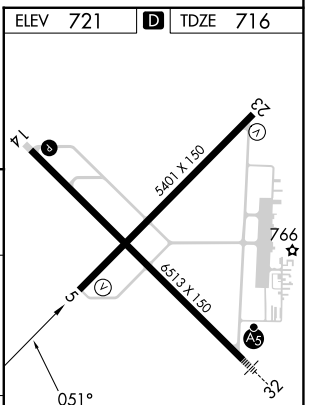
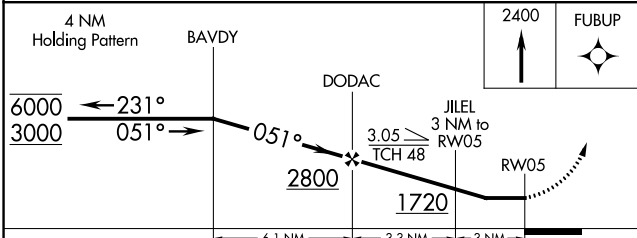
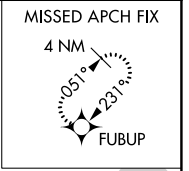
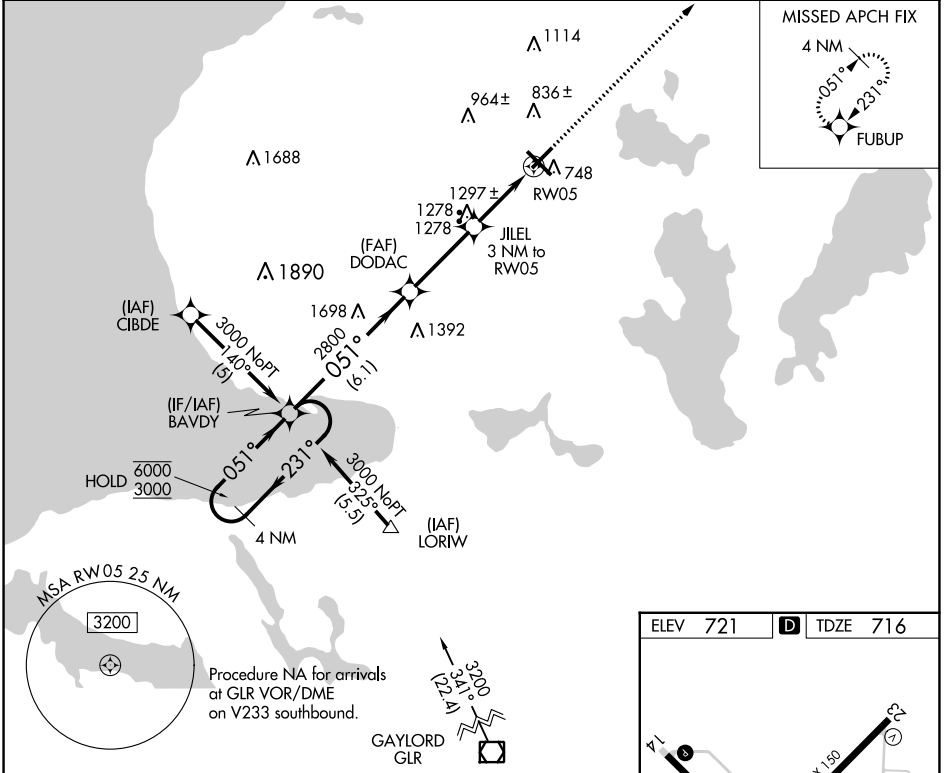
PELLSTON RGNL/EMMET COUNTY (PLN)

RNP APCH.

▼ Straight-in Rwy 5 NA at night, Circling Rwy 5, 14, 23 NA at night.
▲ Rwy 5 helicopter visibility reduction below 1 SM NA.
 When local altimeter setting not received, use Harbor Springs altimeter setting and increase all MDA 40 feet, increase LNAV Cat A visibility ¼ SM.

MISSED APPROACH:
 Climb to 2400 direct FUBUP and hold.

ASOS 119.025	MINNEAPOLIS CENTER 134.6 354.05	UNICOM 123.0 (CTAF) 0
-------------------------------	--	--



CATEGORY	A	B	C	D
LNAV MDA	1560-1 844 (900-1)	1560-1¼ 844 (900-1¼)	1560-2½ 844 (900-2½)	1560-2¾ 844 (900-2¾)
CIRCLING	1560-1¼	839 (900-1¼)	1560-2½ 839 (900-2½)	1660-3 939 (1000-3)

HIRL Rwy 14-32 0
 MRL Rwy 5-23 0
 REIL Rws 5, 14, and 23 0

EC-1, 22 FEB 2024 to 21 MAR 2024

EC-1, 22 FEB 2024 to 21 MAR 2024

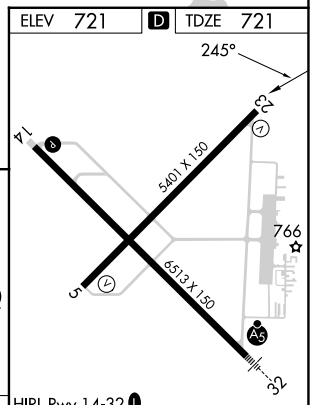
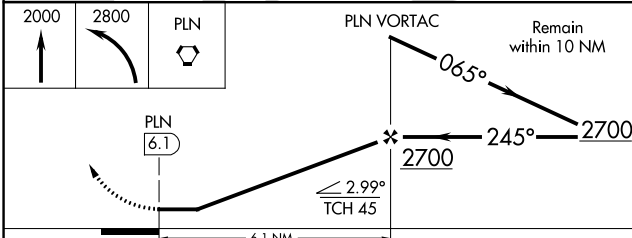
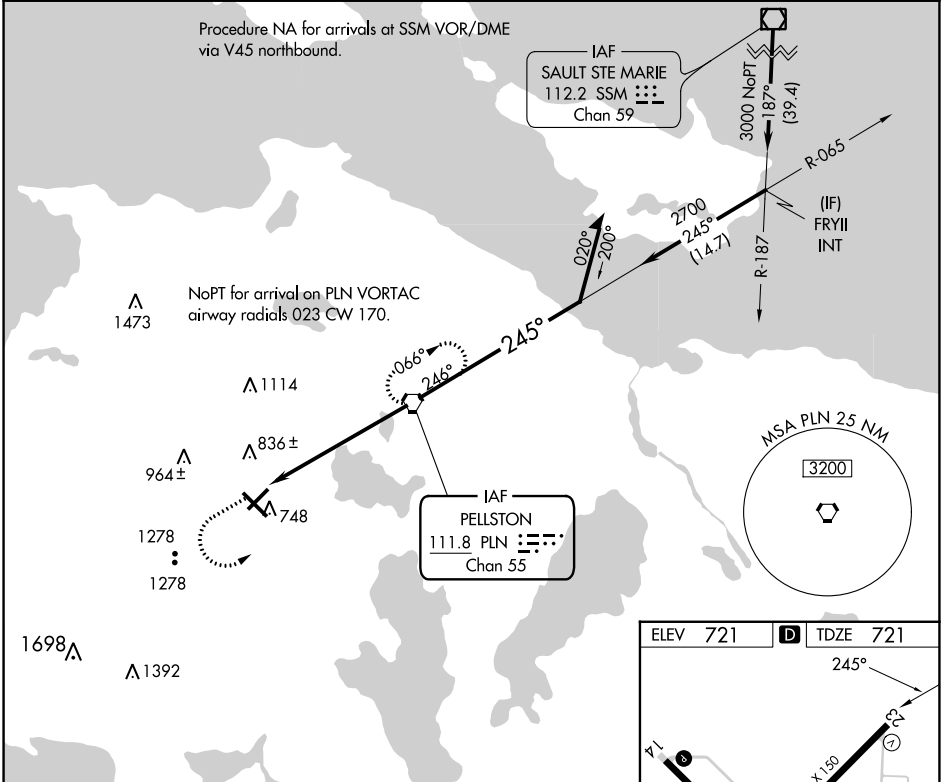
VORTAC PLN	APP CRS	Rwy Idg	5395
111.8	245°	TDZE	721
Chan 55		Apt Elev	721

VOR RWY 23

PELLSTON RGNL/EMMET COUNTY (PLN)

<p>⚠ When local altimeter setting not received, use Harbor Springs altimeter setting: increase all MDA 40 feet and visibility S-23 Cat C and D ¼ SM. Rwy 23 helicopter visibility reduction below 1 SM NA. Straight-in Rwy 23 NA at night, Circling Rwy 5, 14, 23 NA at night.</p>	<p>MISSED APPROACH: Climb to 2000 then climbing left turn to 2800 direct PLN VORTAC and hold.</p>
---	--

ASOS 119.025	MINNEAPOLIS CENTER 134.6 354.05	UNICOM 123.0 (CTAF) 0
------------------------	---	---------------------------------



CATEGORY	A	B	C	D	HIRL Rwy 14-32 0	MIRL Rwy 5-23 0	REIL Rwys 5, 14, and 23 0			
S-23	1300-1	579 (600-1)	1300-1½ 579 (600-1½)	1300-1¾ 579 (600-1¾)	FAF to MAP 6.1 NM					
CIRCLING	1300-1 579 (600-1)	1320-1 599 (600-1)	1560-2½ 839 (900-2½)	1660-3 939 (1000-3)	Knots	60	90	120	150	180
					Min:Sec	6:06	4:04	3:03	2:26	2:02

EC-1, 22 FEB 2024 to 21 MAR 2024

EC-1, 22 FEB 2024 to 21 MAR 2024