

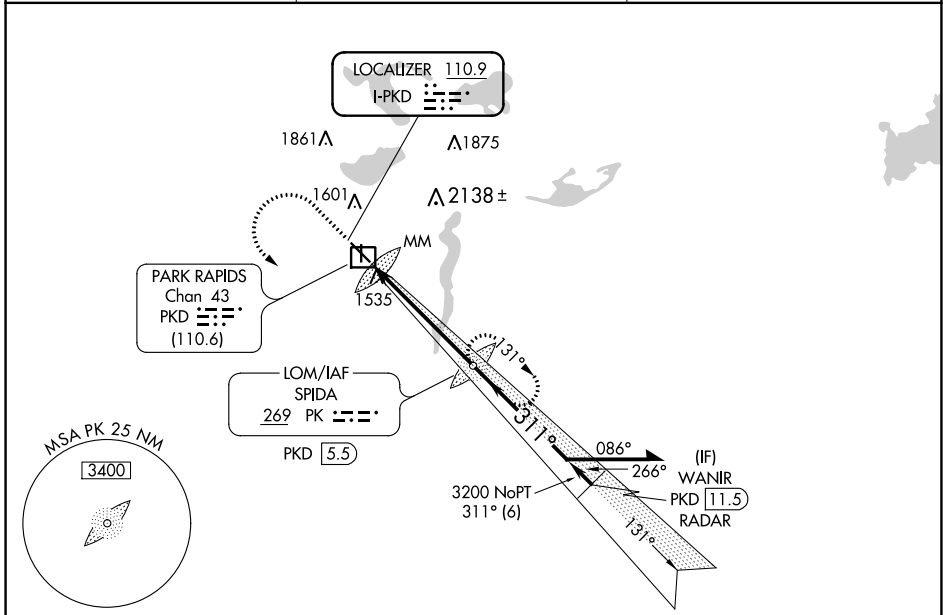
LOC I-PKD 110.9	APP CRS 311°	Rwy Idg TDZE 1444 Apt Elev 1445
---------------------------	------------------------	---

ILS or LOC RWY 31

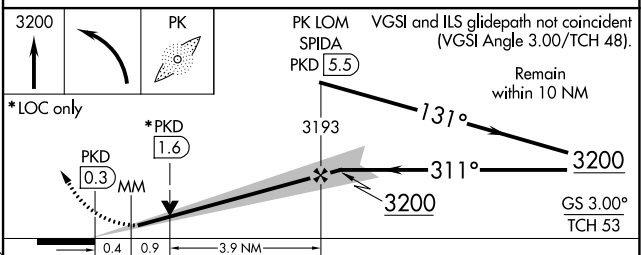
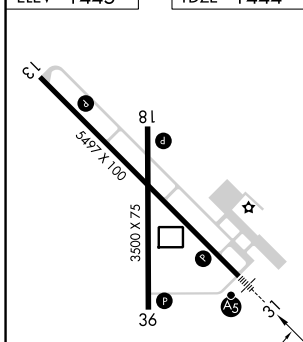
PARK RAPIDS MUNI/KONSHOK FLD (PKD)

ADF required. ADF or RADAR required for procedure entry.	MALSR 	MISSED APPROACH: Climb to 3200 then left turn direct SPIDA LOM and hold.
Circling Rwy 18, 36 NA at night. For inop ALS, increase S-LOC 31 Cat C/D visibility to 1 3/8 SM. Autopilot coupled approach NA below 1600 MSL.		

ASOS 119.25	MINNEAPOLIS CENTER 134.75 251.1	UNICOM 123.0 (CTAF) 0
-----------------------	---	---------------------------------



ELEV 1445	TDZE 1444
-----------	-----------



CATEGORY	A	B	C	D
S-ILS 31	1644-1/2 200 (200-1/2)			
S-LOC 31	1920-1/2 476 (500-1/2)		1920-1 476 (500-1)	
CIRCLING	1920-1 475 (500-1)	1980-1 535 (600-1)	2000-1 555 (600-1/2)	2500-3 1055 (1100-3)

NC-1, 22 FEB 2024 to 21 MAR 2024

NC-1, 22 FEB 2024 to 21 MAR 2024

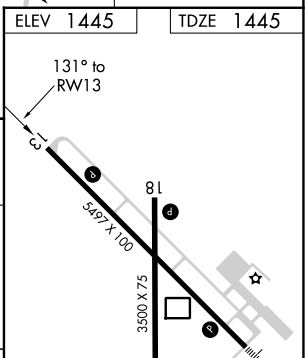
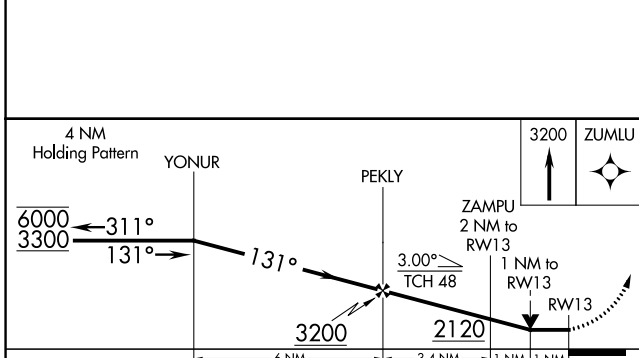
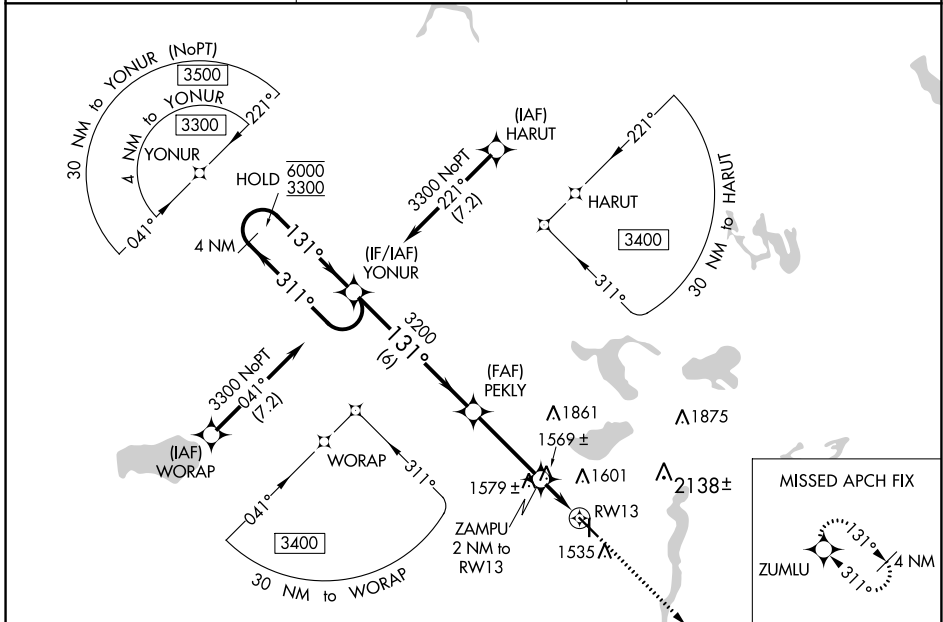
WAAS CH 86925 W13A	APP CRS 131°	Rwy Idg TDZE Apt Elev	5497 1445 1445
--	------------------------	-----------------------------	---

RNAV (GPS) RWY 13

PARK RAPIDS MUNI/KONSHOK FLD (PKD)

RNP APCH.	MISSED APPROACH: Climb to 3200 direct ZUMLU and hold.
<p>▼ Circling Rwy 18, 36 NA at night.</p> <p>▲ Rwy 13 helicopter visibility reduction below ¼ SM NA.</p>	

ASOS 119.25	MINNEAPOLIS CENTER 134.75 251.1	UNICOM 123.0 (CTAF)
-----------------------	---	-------------------------------



CATEGORY	A	B	C	D
LP MDA	1820-1 375 (400-1)			
LNAV MDA	1840-1	395 (400-1)	1840-1½	395 (400-1½)
CIRCLING	1900-1 455 (500-1)	1980-1 535 (600-1)	2000-1½ 555 (600-1½)	2500-3 1055 (1100-3)

HIRL Rwy 13-31	Ⓛ
MIRL Rwy 18-36	Ⓛ
REIL Rws 13, 18 and 36	Ⓛ

NC-1, 22 FEB 2024 to 21 MAR 2024

NC-1, 22 FEB 2024 to 21 MAR 2024


WAAS CH 82525 W31A	APP CRS 311°	Rwy Idg TDZE Apt Elev	5497 1444 1445
--	------------------------	-----------------------------	---

RNAV (GPS) RWY 31

PARK RAPIDS MUNI/KONSHOK FLD (PKD)

RNP APCH.

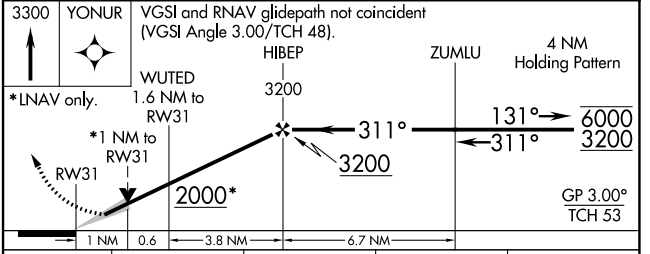
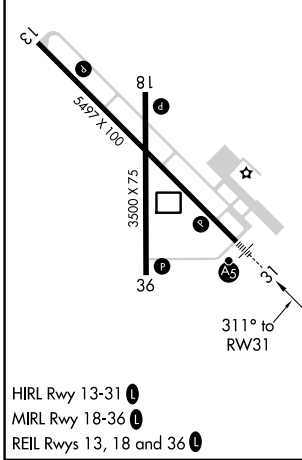
▽ For uncompensated Baro-VNAV systems, LNAV/VNAV NA below -17°C or above 34°C.
⚠ Circling Rwy 18, 36 NA at night.
 For inop ALS, increase LNAV/VNAV all Cats visibility to 7/8 SM and LNAV Cat C/D visibility to 1 SM.

MALSR  MISSED APPROACH: Climb to 3300 direct YONUR and hold.

ASOS 119.25	MINNEAPOLIS CENTER 134.75 251.1	UNICOM 123.0 (CTAF)
-----------------------	---	-------------------------------



ELEV 1445	TDZE 1444
------------------	------------------



CATEGORY	A	B	C	D
LPV DA	1644-½		200 (200-½)	
LNAV/VNAV DA	1731-½		287 (300-½)	
LNAV MDA	1800-½ 356 (400-½)		1800-5/8 356 (400-5/8)	
C CIRCLING	1900-1 455 (500-1)	1980-1 535 (600-1)	2000-1½ 555 (600-1½)	2500-3 1055 (1100-3)

NC-1, 22 FEB 2024 to 21 MAR 2024

NC-1, 22 FEB 2024 to 21 MAR 2024