

WAAS CH 62830 W14A	APP CRS 137°	Rwy Idg TDZE Apt Elev	6236 2608 2613
--	------------------------	-----------------------------	---

RNAV (GPS) RWY 14

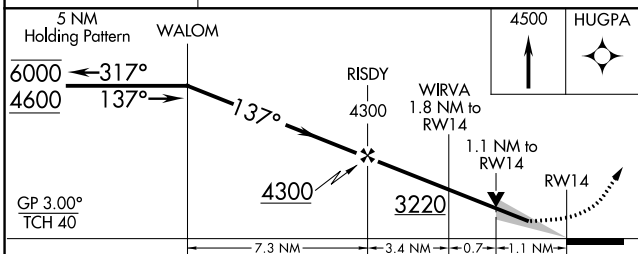
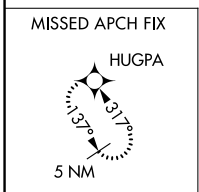
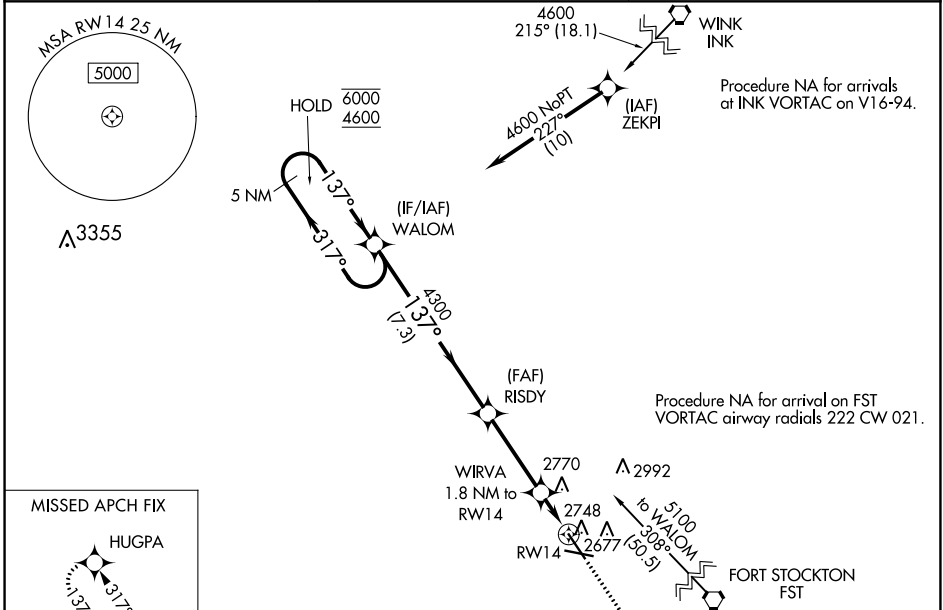
PECOS MUNI (PEQ)

RNP APCH - GPS.

⚠ Circling Rwy 9, 27 NA at night. Baro-VNAV and VDP NA when using Wink altimeter setting. For uncompensated Baro-VNAV systems, LNAV/VNAV NA below -20°C or above 54°C. When local altimeter setting not received, use Wink altimeter setting and increase LPV DA to 2903 feet and all visibilities ¼ SM. Increase LNAV/VNAV DA to 3004 feet and all visibilities ¼ SM. Increase all MDAs 100 feet and LNAV visibility Cat C/D ¼ SM, and Circling visibility Cat C/D ¼ SM.

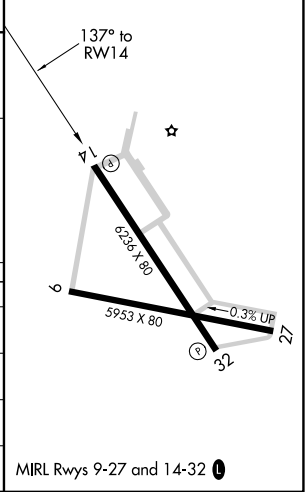
MISSED APPROACH:
Climb to 4500 direct HUGPA and hold.

AWOS-3 118.175	ALBUQUERQUE CENTER 135.875 292.15	UNICOM 122.8 (CTAF) 0
--------------------------	---	---------------------------------



ELEV 2613	TDZE 2608
-----------	-----------

CATEGORY	A	B	C	D
LPV DA		2808-¾	200 (200-¾)	
LNAV/VNAV DA		2909-7/8	301 (300-7/8)	
LNAV MDA	3000-1	392 (400-1)	3000-1½	392 (400-1½)
CIRCLING	3060-1 447 (500-1)	3140-1 527 (600-1)	3360-2¼ 747 (800-2¼)	3360-2½ 747 (800-2½)



SC-3, 22 FEB 2024 to 21 MAR 2024

SC-3, 22 FEB 2024 to 21 MAR 2024

WAAS CH 69629 W32A	APP CRS 317°	Rwy Idg TDZE Apt Elev 6236 2605 2613
--	------------------------	--

RNAV (GPS) RWY 32

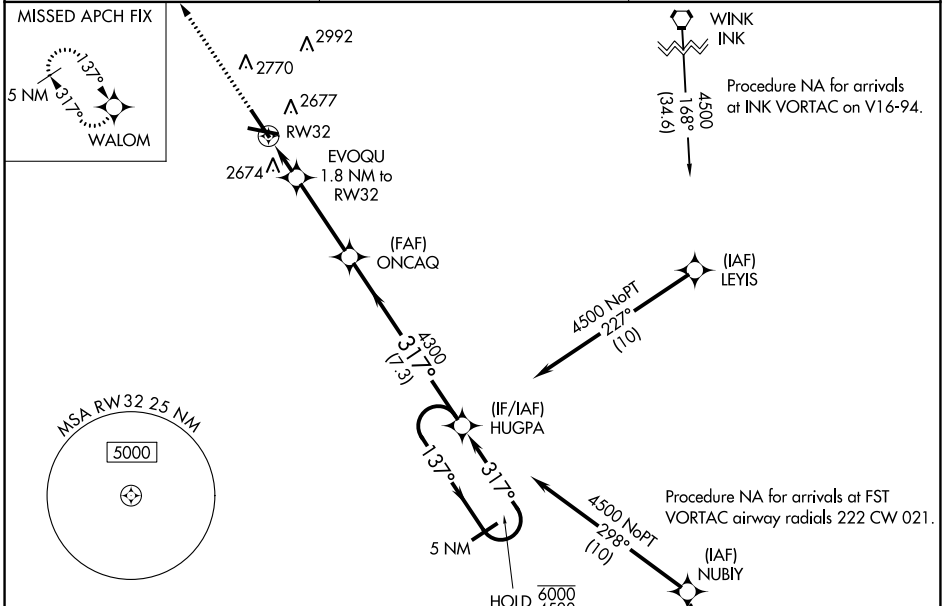
PECOS MUNI (P,E,Q)

RNP APCH - GPS.

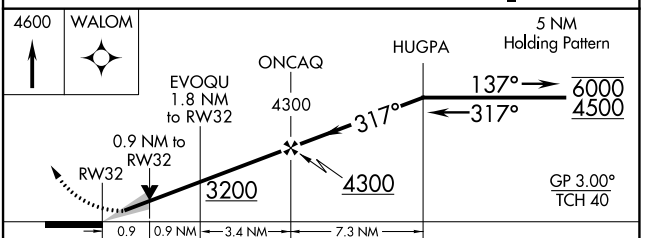
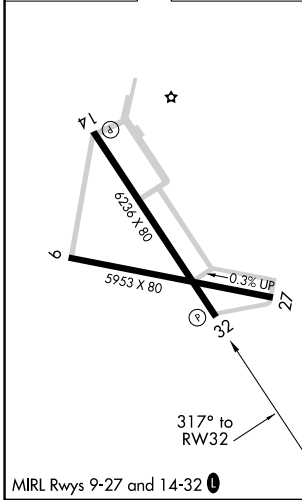
▼ Baro-VNAV and VDP NA when using Wink altimeter setting. For uncompensated Baro-VNAV systems, LNAV/VNAV NA below -20°C or above 54°C. When local altimeter setting not received, use Wink altimeter setting: increase LPV DA to 2900 feet, LNAV/VNAV DA to 2950 feet and all visibilities ¼ SM; increase all MDA 100 feet and visibility Cat C and LNAV Cat D ¼ SM. Circling Rwy 9, 27 NA at night.

MISSED APPROACH: Climb to 4600 direct WALOM and hold.

AWOS-3 118.175	ALBUQUERQUE CENTER 135.875 292.15	UNICOM 122.8 (CTAF) 0
--------------------------	---	---------------------------------



ELEV 2613	TDZE 2605
-----------	-----------



CATEGORY	A	B	C	D
LPV DA		2805-¾	200 (200-¾)	
LNAV/VNAV DA		2855-¾	250 (300-¾)	
LNAV MDA		2940-1	335 (400-1)	
C CIRCLING	3060-1 447 (500-1)	3140-1 527 (600-1)	3360-2¼ 747 (800-2¼)	3360-2½ 747 (800-2½)

SC-3, 22 FEB 2024 to 21 MAR 2024

SC-3, 22 FEB 2024 to 21 MAR 2024