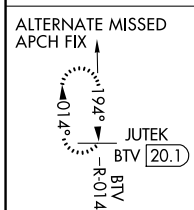
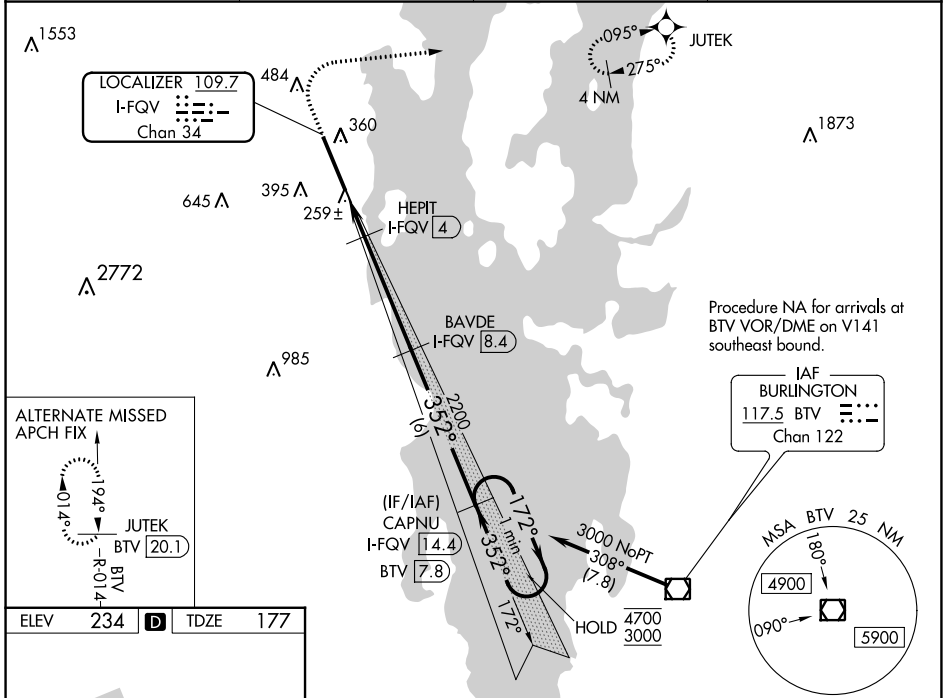


LOC/DME I-FQV 109.7 Chan 34	APP CRS 352°	Rwy Idg TDZE Apt Elev	11759 177 234
---	------------------------	-----------------------------	--

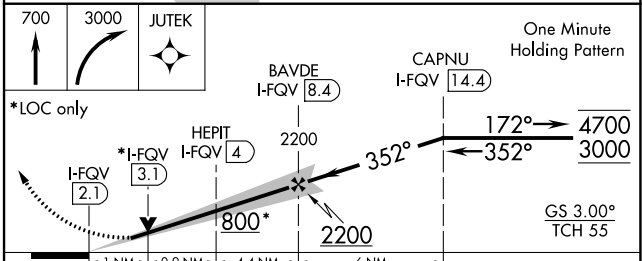
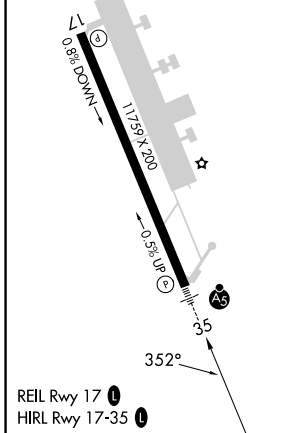
ILS or LOC RWY 35

PLATTSBURGH INTL (PBG)

DME required. RNAV 1-GPS required.		MALSR 	MISSED APPROACH: Climb to 700 then climbing right turn to 3000 direct JUTEK and hold.	
 For inop ALS, increase S-LOC 35 Cat C/D visibility to 1 SM.				
ASOS 132.225	BURLINGTON APP CON* 121.1 278.8	CLNC DEL 121.85	UNICOM 122.7 (CTAF) 0	



ELEV 234	D	TDZE 177
----------	---	----------



CATEGORY	A	B	C	D
S-ILS 35	377-½		200 (200-½)	
S-LOC 35	520-½	343 (300-½)	520-⅝	343 (300-⅝)
CIRCLING	720-1 486 (500-1)	740-1 506 (600-1)	800-1½ 566 (600-1½)	960-2¼ 726 (800-2¼)

WAAS CH 40402 W17A	APP CRS 172°	Rwy Idg TDZE 234 Apt Elev 234	11759
--	------------------------	---	--------------

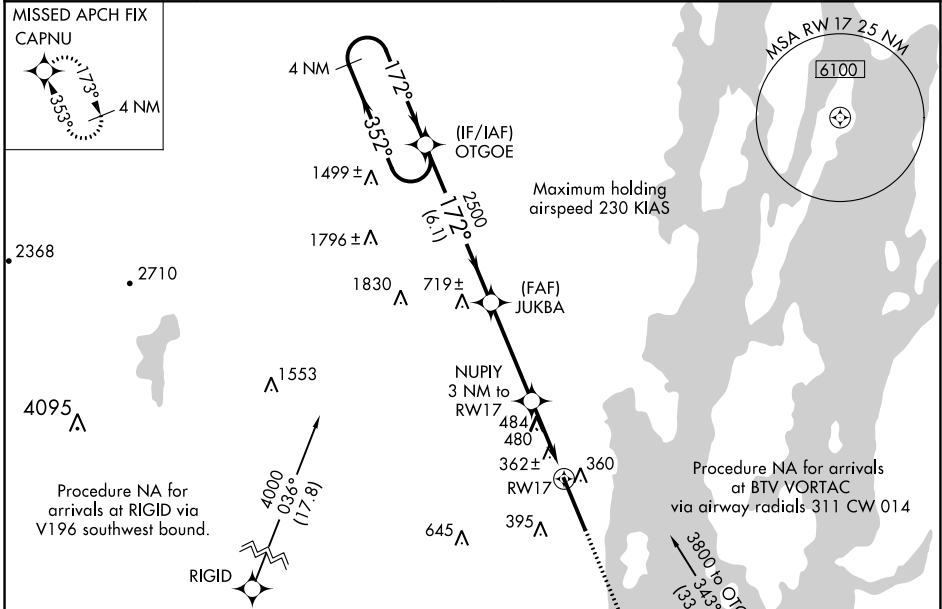
RNAV (GPS) RWY 17

PLATTSBURGH INTL (PBG)

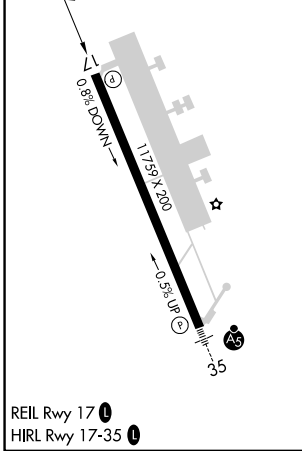
NA When local altimeter setting not received, use Patrick Leahy Burlington Intl altimeter setting and increase all DA 54 feet, all MDA 60 feet, LPV all Cats visibility ¼ mile, LNAV/VNAV all Cats visibility ¼ mile, LNAV Cats C, D and E visibility ¼ mile and Circling Cat C/D visibility ¼ mile. VDP NA when using Patrick Leahy Burlington Intl altimeter setting. Baro-VNAV NA. DME/DME RNP-0.3 NA. Helicopter visibility reduction below ¾ SM NA.

MISSED APPROACH: Climb to 3100 direct CAPNU and hold.

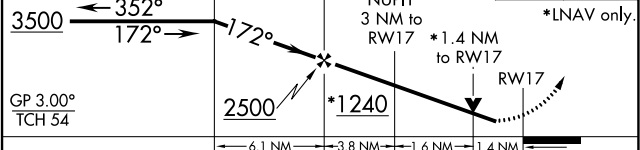
ASOS 132.225	BURLINGTON APP CON * 121.1 278.8	CLNC DEL 121.85	UNICOM 122.7 (CTAF) 0
------------------------	--	---------------------------	---------------------------------



ELEV 234	TDZE 234
----------	----------



4 NM Holding Pattern	OTGOE	JUKBA	NUPIY 3 NM to RWY 17	RWY 17
----------------------	-------	-------	----------------------	--------



VGSI and RNAV glidepath not coincident (VGSI Angle 3.00/TCH 40).	3100	CAPNU			
CATEGORY	A	B	C	D	E
LPV DA	561-1 327 (400-1)				
LNAV/VNAV DA	706-1 5/8 472 (500-1%)				
LNAV MDA	740-1	506 (600-1)	740-1 3/8	506 (600-1%)	
CIRCLING	740-1	506 (600-1)	800-1 1/2	960-2 1/4	1100-3
			566 (600-1 1/2)	726 (800-2 1/4)	866 (900-3)

NE-2, 22 FEB 2024 to 21 MAR 2024

NE-2, 22 FEB 2024 to 21 MAR 2024

WAAS CH 78003 W35A	APP CRS 353°	Rwy ldg TDZE 177 Apt Elev 234	11759
---------------------------------	------------------------	---	--------------

RNAV (GPS) RWY 35

PLATTSBURGH INTL (PBG)

⚠ For uncompensated Baro-VNAV systems, LNAV/VNAV NA below -18°C (0°F) or above 54°C (130°F). DME/DME RNP-0.3 NA. For inop MALSR, increase LPV and LNAV/VNAV all Cats visibility to ¾ mile. For inop MALSR when using Burlington altimeter setting, increase LPV and LNAV/VNAV all Cats visibility to 1 mile. When local altimeter setting not received, use Burlington altimeter setting and increase all DA 54 feet and all MDA 60 feet; increase LPV and LNAV/VNAV all Cats visibility to ¾ mile, LNAV Cats C, D visibility to 1¼ mile, and increase Circling Cats C/D visibility ¼ mile. VDP and Baro-VNAV NA when using Burlington Intl altimeter setting.

MALSR

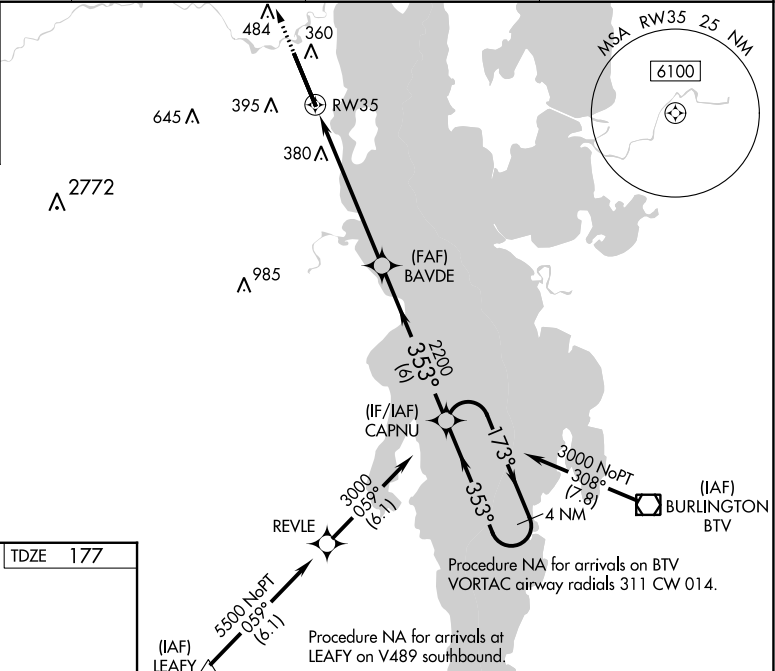
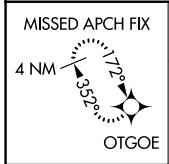
MISSED APPROACH:
Climb to 3500 direct OTGOE and hold, continue climb-in-hold to 3500.

ASOS 132.225

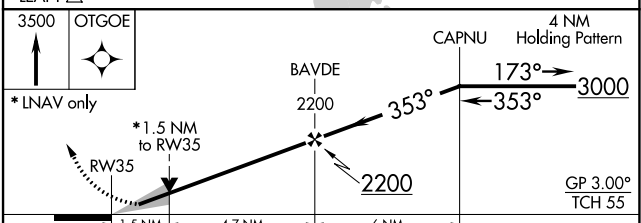
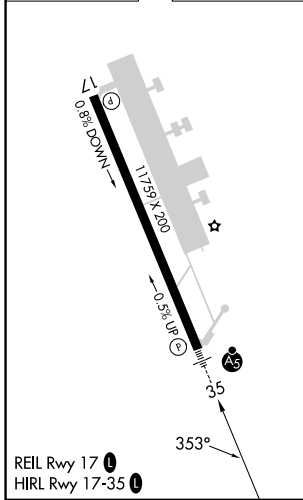
BURLINGTON APP CON ★ 121.1 278.8
--

CINC DEL 121.85

UNICOM 122.7 (CTAF) 0



ELEV 234	D	TDZE 177
----------	----------	----------



CATEGORY	A	B	C	D
LPV DA		427-½	250 (200-½)	
LNAV/VNAV DA		434-½	257 (200-½)	
LNAV MDA	700-½	523 (500-½)	700-1	523 (500-1)
CIRCLING	720-1	740-1	800-1½	960-2¼
	486 (600-1)	506 (600-1)	566 (700-1½)	726 (800-2¼)

NE-2, 22 FEB 2024 to 21 MAR 2024

NE-2, 22 FEB 2024 to 21 MAR 2024