

LOC I-PBF 111.7	APP CRS 178°	Rwy Idg 5998
		TDZE 206
		Apt Elev 206

ILS or LOC RWY 18

PINEBLUFF RGNL/GRIDER FLD (PBF)

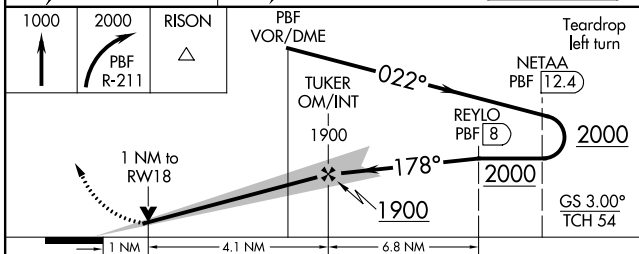
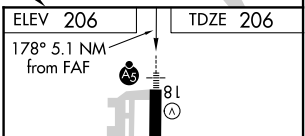
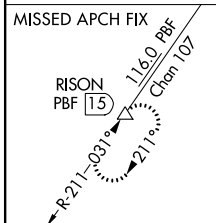
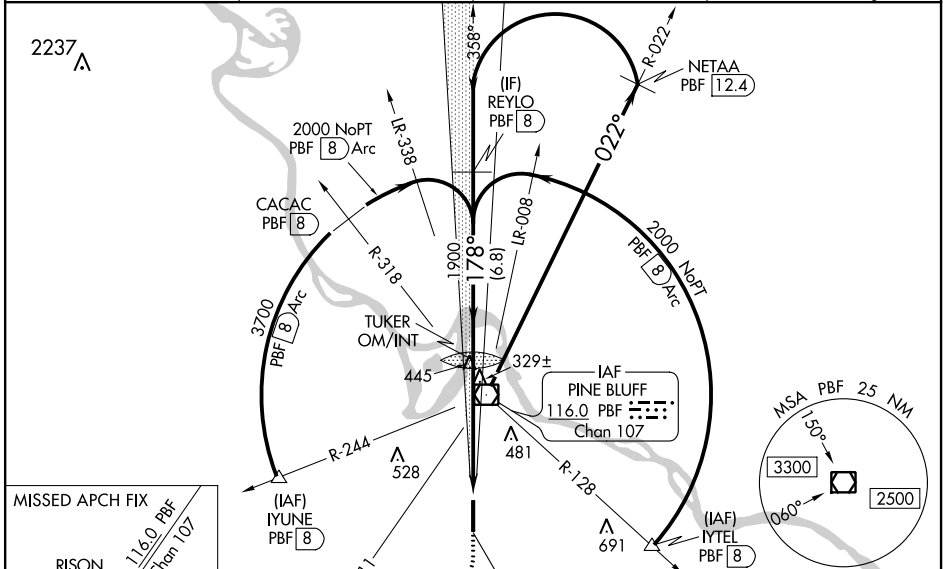
DME required.

NA Rwy 18 helicopter visibility reduction below 3/4 SM NA. Inop table does not apply to S-ILS 18. For inop ALS, increase S-LOC 18 all Cts visibility to 1 SM. For inop ALS when using Stuttgart altimeter setting, increase S-LOC 18 Cat A/B visibility to 1 SM. DME from PBF VOR/DME. DME requires simultaneous reception of I-PBF and PBF DME. When local altimeter setting not received, use Stuttgart altimeter setting; increase DA to 541 feet and all MDA 80 feet; increase S-LOC 18 Cat C/D visibility 1/2 SM and Circling Cts C/D visibility 1/4 SM.



MISSED APPROACH: Climb to 1000 then climbing right turn to 2000 on PBF VOR/DME R-211 to RISON/PBF 15 DME and hold.

ASOS 120.775	LITTLE ROCK APP CON 119.85 353.6	CLNC DEL 119.85	UNICOM 123.0 (CTAF) 1
------------------------	--	---------------------------	---------------------------------



CATEGORY	A	B	C	D
S-ILS 18		466-3/4	260 (300-3/4)	
S-LOC 18		580-3/4	374 (400-3/4)	
C CIRCLING	660-1 454 (500-1)	680-1 474 (500-1)	840-1-3/4 634 (700-1-3/4)	880-2-1/4 674 (700-2-1/4)

ELEV 206		TDZE 206	
178° 5.1 NM from FAF		81	
LOCALIZER 111.7 I-PBF		36	
MRL Rwy 18-36 1			
FAF to MAP 5.1 NM			
Knots	60	90	120 150 180
Min:Sec	5:06	3:24	2:33 2:02 1:42

SC-1, 07 OCT 2021 to 04 NOV 2021

SC-1, 07 OCT 2021 to 04 NOV 2021

WAAS CH 40420 W18A	APP CRS 178°	Rwy Idg TDZE Apt Elev	5998 206 206
--	------------------------	-----------------------------	---

RNAV (GPS) RWY 18

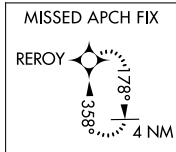
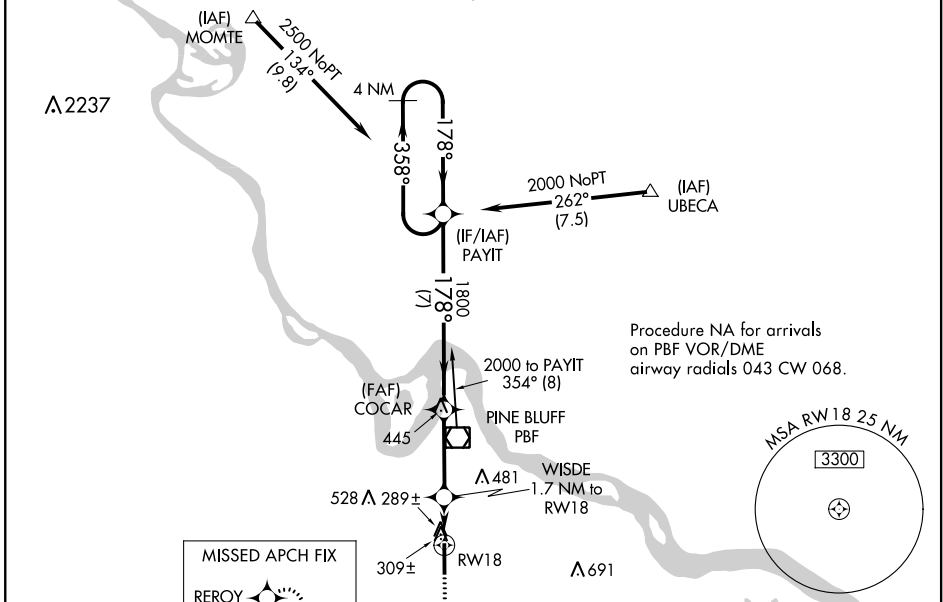
PINEBLUFF RGNL/GRIDER FLD (PBF)

Inoperative table does not apply to LPV. Baro-VNAV and VDP NA when using Stuttgart altimeter setting. For uncompensated Baro-VNAV systems, LNAV/VNAV NA below -15°C (5°F) or above 42°C (107°F). DME/DME RNP-0.3 NA. Rwy 18 helicopter visibility reduction below 3/4 SM NA. When local altimeter setting not received, use Stuttgart altimeter setting; increase LPV DA to 534 feet; increase LNAV/VNAV DA to 723 feet and visibility all Cats 1/2 SM; increase all MDA 80 feet and LNAV Cats C/D and Circling Cats C/D visibility 1/4 SM. For inop MALSR increase LNAV Cats A/B visibility to 1 and Cats C/D visibility to 1. For inop MALSR when using Stuttgart altimeter setting, increase LPV visibility all Cats 1/4 mile, increase LNAV visibility Cats A/B 1/4 mile and Cats C/D 3/8 mile.

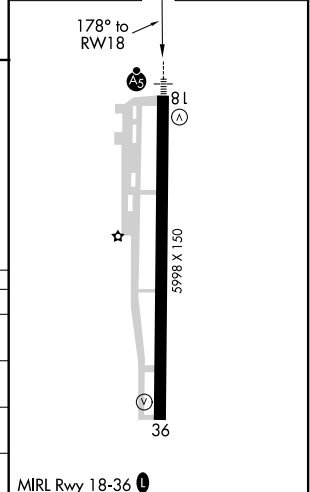
MALSR

MISSED APPROACH:
Climb to 2000 direct REROY and hold.

ASOS 120.775	LITTLE ROCK APP CON 119.85 353.6	CLNC DEL 119.85	UNICOM 123.0 (CTAF) 0
------------------------	--	---------------------------	---------------------------------



ELEV 206	TDZE 206
----------	----------



2000	REROY				
*LNAV only.		<p>Diagram showing segments A, B, C, D with altitudes 780, 1800, 358°, 2000, 4 NM Holding Pattern, GP 3.00° TCH 52.</p>			
CATEGORY	A	B	C	D	
LPV DA		459-3/4	253 (300-3/4)		
LNAV/VNAV DA		648-1	442 (500-1)		
LNAV MDA		600-3/4	394 (400-3/4)		
CIRCLING	660-1 454 (500-1)	680-1 474 (500-1)	840-1 3/4 634 (700-1 3/4)	880-2 1/4 674 (700-2 1/4)	

SC-1, 07 OCT 2021 to 04 NOV 2021

SC-1, 07 OCT 2021 to 04 NOV 2021

WAAS CH 86620	APP CRS 358°	Rwy Idg TDZE Apt Elev	5998 202 206
-------------------------	------------------------	-----------------------------	---

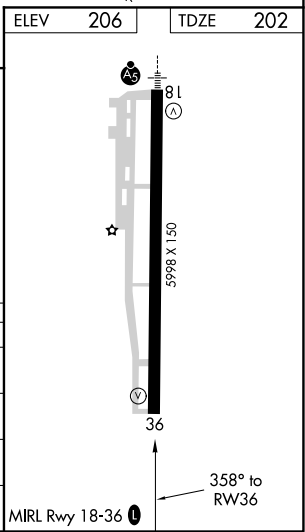
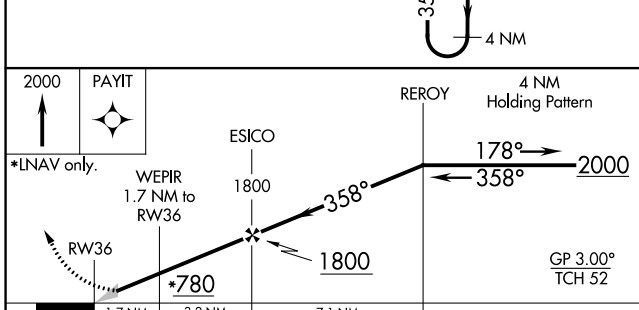
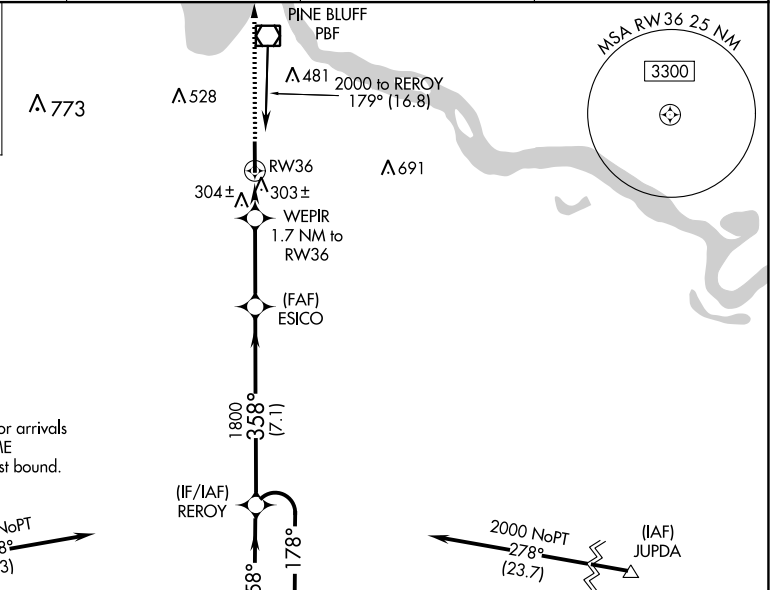
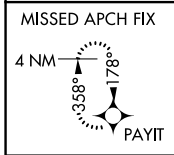
RNAV (GPS) RWY 36

PINEBLUFF RGNL/GRIDER FLD (PBF)

Baro-VNAV NA when using Stuttgart altimeter setting. For uncompensated Baro-VNAV systems, LNAV/VNAV NA below -15°C or above 42°C. DME/DME RNP-0.3 NA. When local altimeter setting not received, use Stuttgart altimeter setting; increase LPV DA to 527 feet; increase LNAV/VNAV DA to 562 feet and visibility all Cats ½ SM; increase all MDA 80 feet and LNAV and Circling visibility Cats C/D ¼ SM.

MISSED APPROACH:
Climb to 2000 direct PAYIT and hold.

ASOS 120.775	LITTLE ROCK APP CON 119.85 353.6	CLNC DEL 119.85	UNICOM 123.0 (CTAF) 0
------------------------	--	---------------------------	---------------------------------



CATEGORY	A	B	C	D
LPV DA	452-1 250 (300-1)			
LNAV/VNAV DA	487-1 285 (300-1)			
LNAV MDA	600-1 398 (400-1)	600-1 ¹ / ₈ 398 (400-1 ¹ / ₈)		
CIRCLING	660-1 454 (500-1)	680-1 474 (500-1)	840-1 ³ / ₄ 634 (700-1 ³ / ₄)	880-2 ¹ / ₄ 674 (700-2 ¹ / ₄)

SC-1, 07 OCT 2021 to 04 NOV 2021

SC-1, 07 OCT 2021 to 04 NOV 2021