

FOREY TWO ARRIVAL (RNAV)
(FOREY.FOREY2) 100CT19

ARB ATIS
134.55
FNT ATIS
133.15
DET ATIS
124.875
PTK ATIS
125.025
YIP ATIS
127.425
KMTK ATIS
125.325 270.1
DETROIT APP CON
134.3 284.0

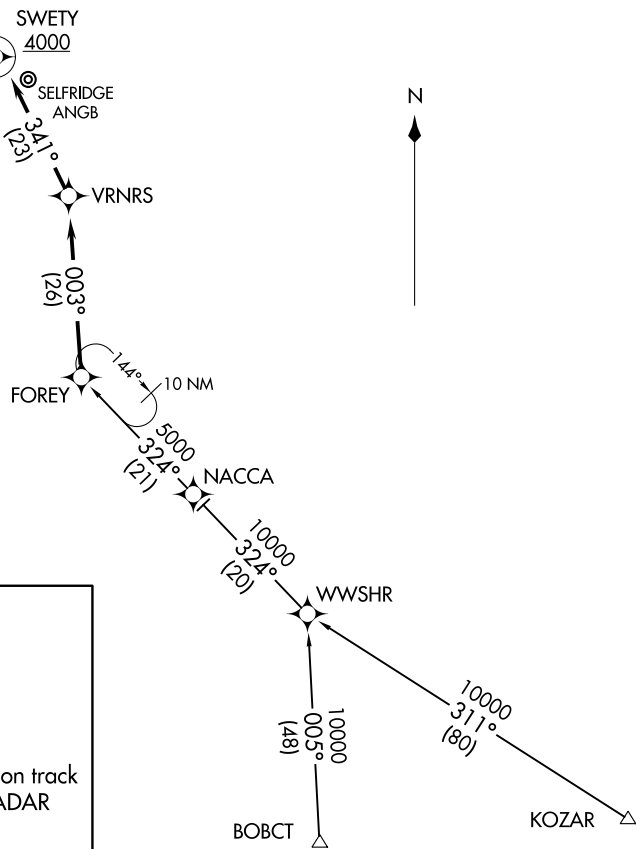
NOTE: RADAR required.
NOTE: RNAV 1.
NOTE: DME/DME/IRU or GPS required.

NOTE: Chart not to scale.

ARRIVAL ROUTE DESCRIPTION

BOBCT TRANSITION (BOBCT.FOREY2)
KOZAR TRANSITION (KOZAR.FOREY2)
WWSHR TRANSITION (WWSHR.FOREY2)

LANDING ALL AIRPORTS: From FOREY on track 003° to VRNRS, then on track 341° to cross SWETY at or above 4000, then on track 300°. Expect RADAR vectors to final approach course.



FOREY.FOREY2) 20198
FOREY TWO ARRIVAL (RNAV)

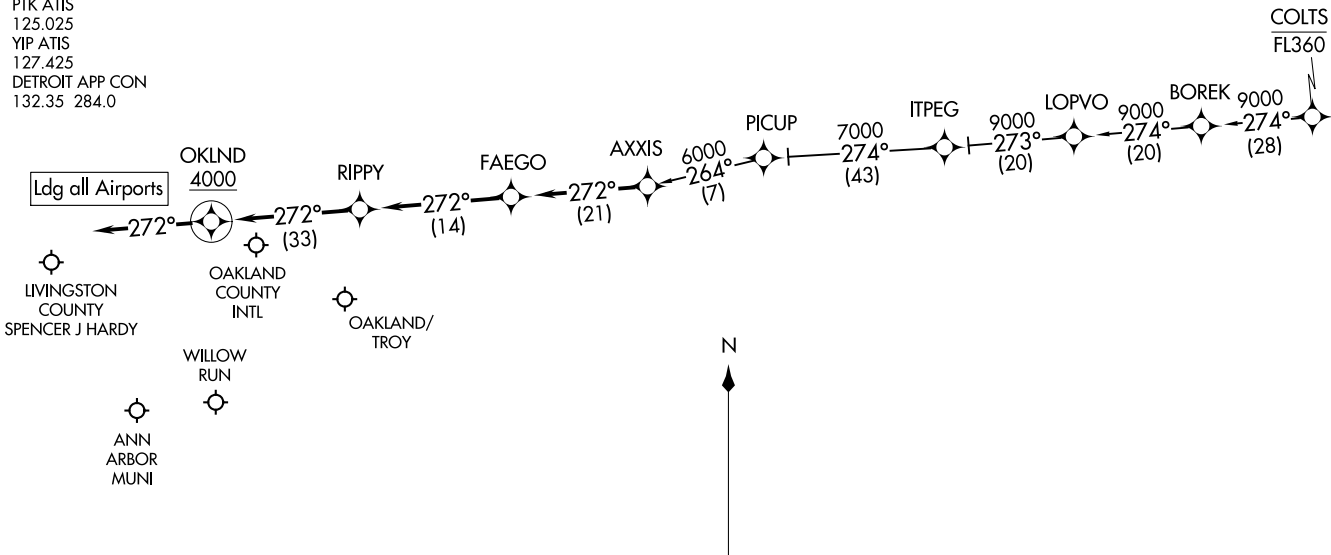
AL-5052 (FAA)

PONTIAC, MICHIGAN

PONTIAC, MICHIGAN

OKLND ONE ARRIVAL (RNAV)
(AXXIS, OKLND1) 24MAY18

ARB ATIS
134.55
PTK ATIS
125.025
YIP ATIS
127.425
DETROIT APP CON
132.35 284.0



ARRIVAL ROUTE DESCRIPTION

COLTS TRANSITION (COLTS.OKLND1):
PICUP TRANSITION (PICUP.OKLND1):

LANDING ALL AIRPORTS: From AXXIS on track 272° to FAEGO, then on track 272° to RIPPY, then on track 272° to cross OKLND at or above 4000, then on track 272°. Expect RADAR vectors to final approach course.

NOTE: RADAR required.
NOTE: RNAV 1.
NOTE: DME/DME/IRU or GPS required.

NOTE: Chart not to scale.

PONTIAC, MICHIGAN

(AXXIS, OKLND1) 20198
OKLND ONE ARRIVAL (RNAV)

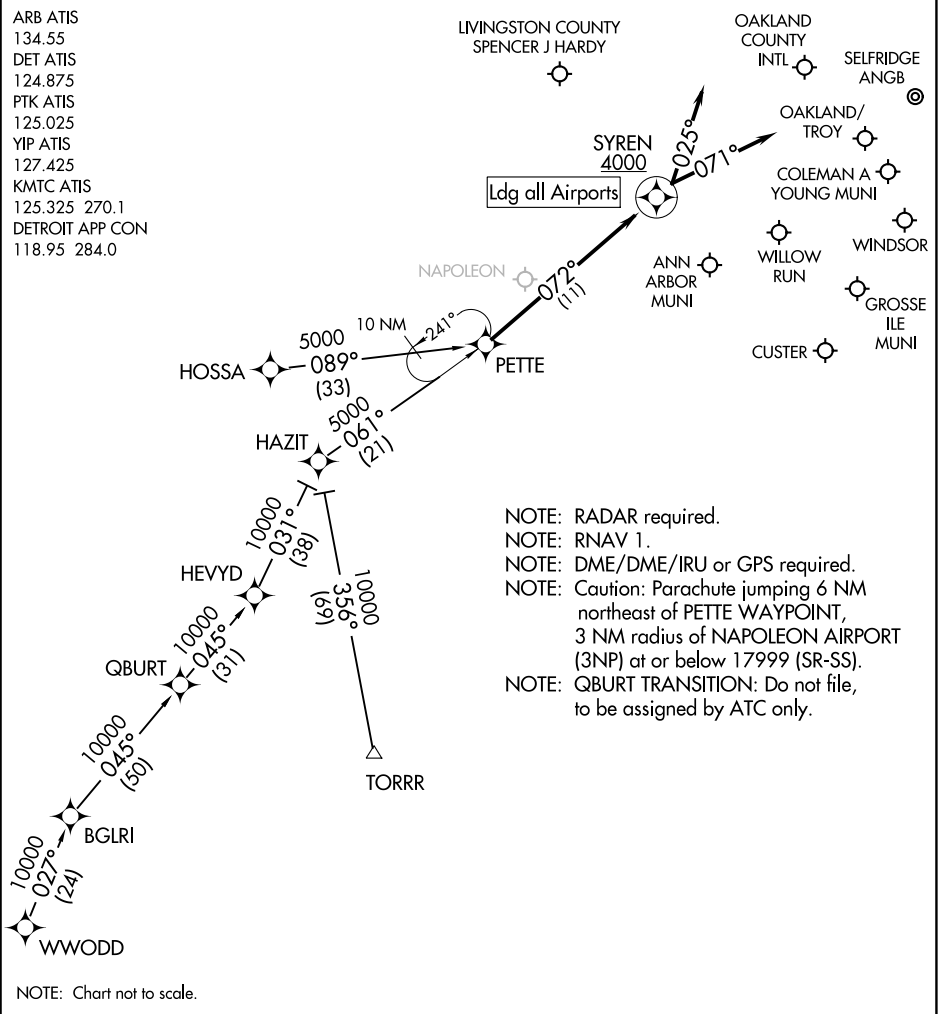
AL-5052 (FAA)

PONTIAC, MICHIGAN

PETTE TWO ARRIVAL (RNAV)

PONTIAC, MICHIGAN

ARB ATIS
134.55
DET ATIS
124.875
PTK ATIS
125.025
YIP ATIS
127.425
KMTC ATIS
125.325 270.1
DETROIT APP CON
118.95 284.0



- NOTE: RADAR required.
- NOTE: RNAV 1.
- NOTE: DME/DME/IRU or GPS required.
- NOTE: Caution: Parachute jumping 6 NM northeast of PETTE WAYPOINT, 3 NM radius of NAPOLEON AIRPORT (3NP) at or below 17999 (SR-SS).
- NOTE: QBURT TRANSITION: Do not file, to be assigned by ATC only.

NOTE: Chart not to scale.

ARRIVAL ROUTE DESCRIPTION

HOSSA TRANSITION (HOSSA.PETTE2):

QBURT TRANSITION (QBURT.PETTE2):

TORRR TRANSITION (TORRR.PETTE2):

WWODD TRANSITION (WWODD.PETTE2):

LANDING CYQG, KONZ, KARB, KYIP, KTF, KDET: From PETTE on track 072° to cross SYREN at or above 4000, then on track 071°. Expect RADAR vectors to final approach course.

LANDING KPTK, KMTC, KOZW, KYLL: From PETTE on track 072° to cross SYREN at or above 4000, then on track 025°. Expect RADAR vectors to final approach course.

PETTE TWO ARRIVAL (RNAV)

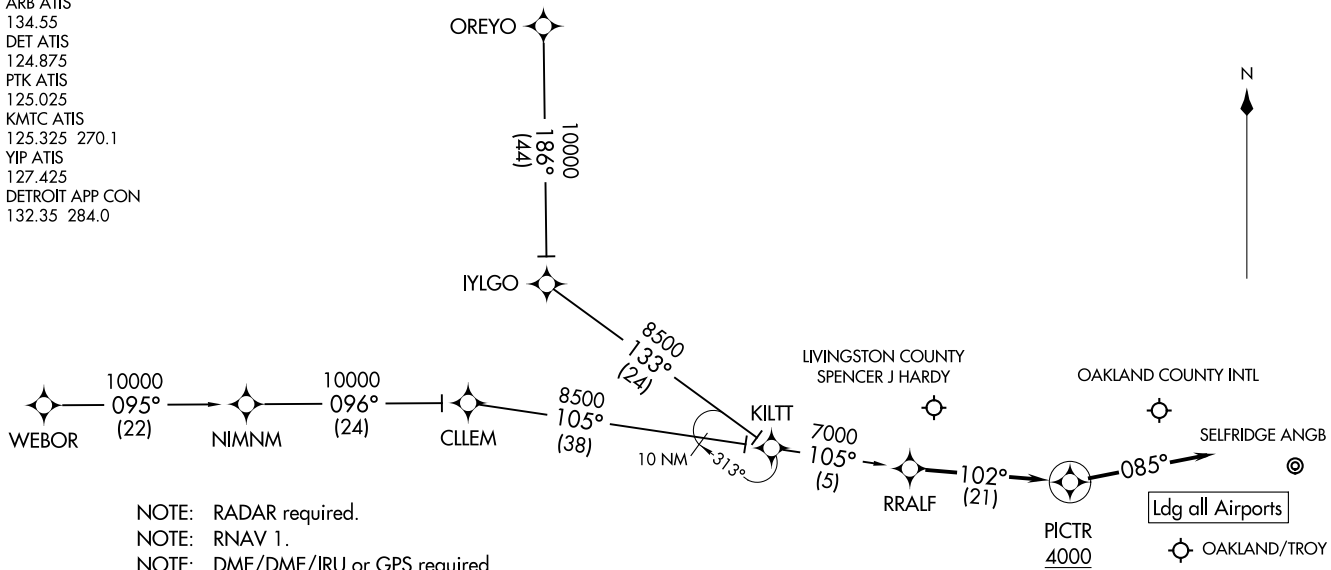
PONTIAC, MICHIGAN

EC-1, 07 OCT 2021 to 04 NOV 2021

EC-1, 07 OCT 2021 to 04 NOV 2021

RRALF THREE ARRIVAL (RNAV)
(RRALF.RRALF3) 21MAY20

ARB ATIS 134.55
DET ATIS 124.875
PTK ATIS 125.025
KMTC ATIS 125.325 270.1
YIP ATIS 127.425
DETROIT APP CON 132.35 284.0



NOTE: RADAR required.
NOTE: RNAV 1.
NOTE: DME/DME/IRU or GPS required.
NOTE: CLLEM TRANSITION: Do not file, to be assigned by ATC only.

ARRIVAL ROUTE DESCRIPTION

CLLEM TRANSITION (CLLEM.RRALF3)
OREYO TRANSITION (OREYO.RRALF3)
WEBOR TRANSITION (WEBOR.RRALF3)

LANDING ALL AIRPORTS: From RRALF on track 102° to cross PICTR at or above 4000, then on track 085°. Expect RADAR vectors to final approach course.

NOTE: Chart not to scale.

PONTIAC, MICHIGAN

(RRALF.RRALF3) 20198
RRALF THREE ARRIVAL (RNAV)
AL-5052 (FAA)

PONTIAC, MICHIGAN