

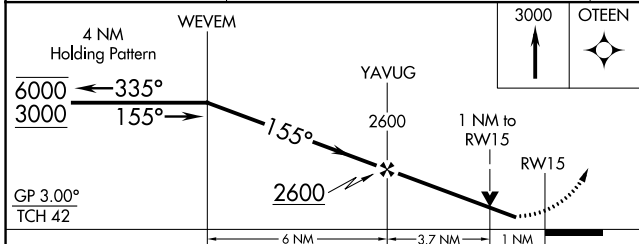
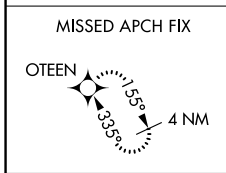
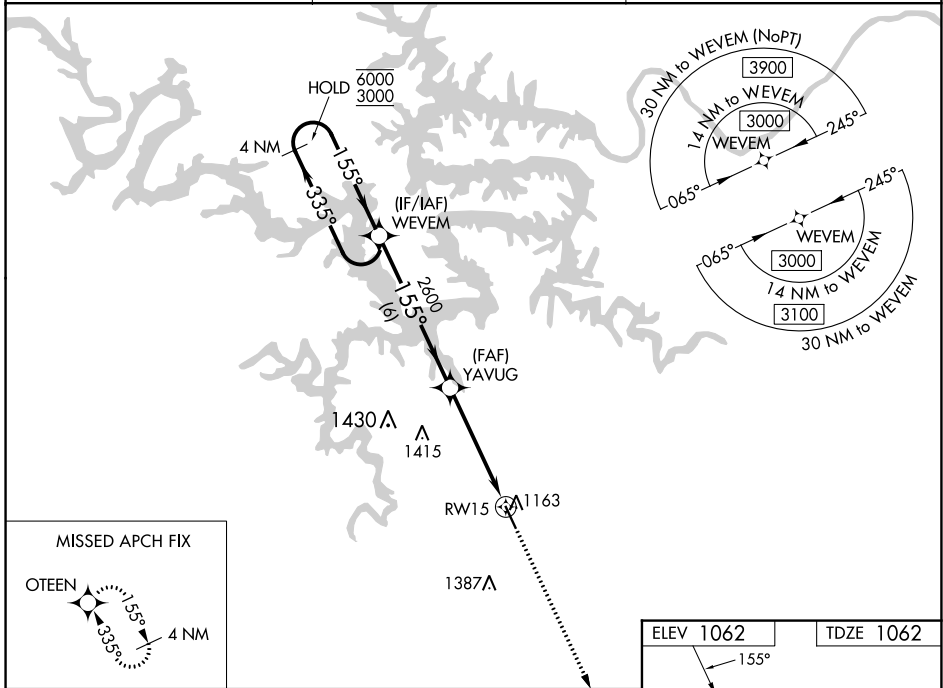
WAAS CH 50219 W15A	APP CRS 155°	Rwy Idg TDZE Apt Elev	5002 1062 1062
--	------------------------	-----------------------------	---

RNAV (GPS) RWY 15

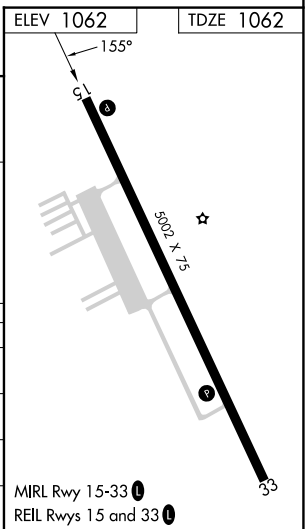
CAMDENTON MEML-LAKE RGNL (OZS)

RNP APCH - GPS.	MISSED APPROACH: Climb to 3000 direct OTEEN and hold.
<p>▼ Rwy 15 helicopter visibility reduction below 3/4 SM NA. ▲ For uncompensated Baro-VNAV systems, LNAV/VNAV NA below -17°C or above 54°C.</p>	

AWOS-3PT 120.225	MIZZU APP CON 124.1 353.925	UNICOM 122.8 (CTAF) 0
----------------------------	---------------------------------------	---------------------------------



CATEGORY	A	B	C	D
LPV DA		1312-1 250 (300-1)		NA
LNAV/VNAV DA		1313-1 251 (300-1)		NA
LNAV MDA		1420-1 358 (400-1)		NA
C CIRCLING	1520-1 458 (500-1)		1700-1 3/4 638 (700-1 3/4)	NA



NC-3, 22 FEB 2024 to 21 MAR 2024

NC-3, 22 FEB 2024 to 21 MAR 2024

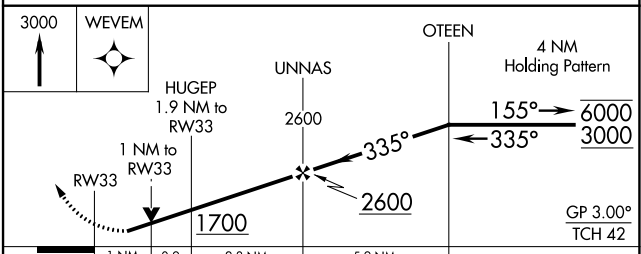
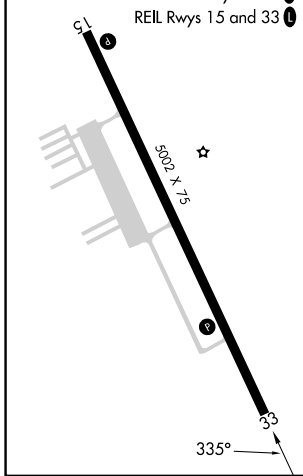
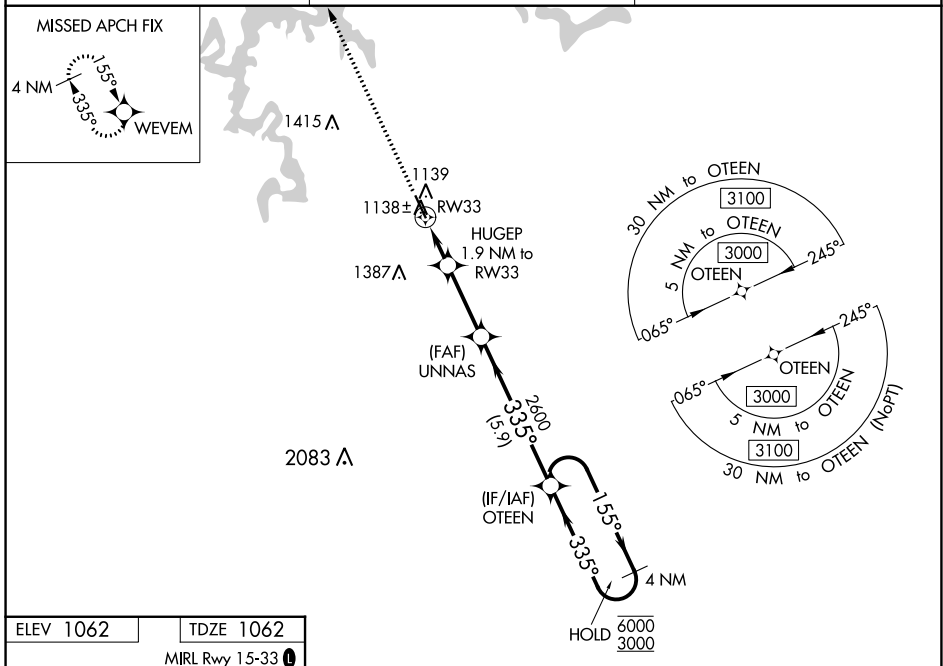
WAAS CH 97419 W33A	APP CRS 335°	Rwy Idg TDZE Apt Elev	5002 1062 1062
--	------------------------	-----------------------------	---

RNAV (GPS) RWY 33

CAMDENTON MEML-LAKE RGNL (OZS)

RNP APCH - GPS.	MISSED APPROACH: Climb to 3000 direct WEVEM and hold.
<p>▼ Rwy 33 helicopter visibility reduction below ¼ SM NA.</p> <p>▲ For uncompensated Baro-VNAV systems, LNAV/VNAV NA below -17°C or above 54°C.</p>	

AWOS-3PT 120,225	MIZZU APP CON 124.1 353.925	UNICOM 122.8 (CTAF) 0
----------------------------	---------------------------------------	---------------------------------



CATEGORY	A	B	C	D
LPV DA	1312-1	250 (300-1)		NA
LNAV/VNAV DA	1312-1	250 (300-1)		NA
LNAV MDA	1400-1	338 (400-1)		NA
C CIRCLING	1520-1	458 (500-1)	1700-1¾ 638 (700-1¾)	NA

NC-3, 22 FEB 2024 to 21 MAR 2024

NC-3, 22 FEB 2024 to 21 MAR 2024

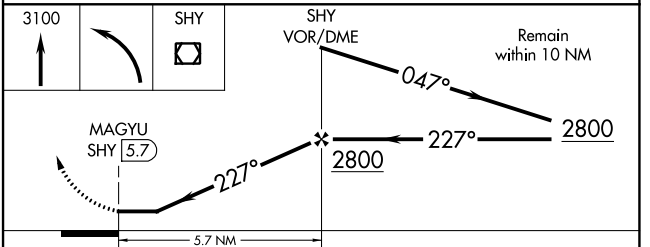
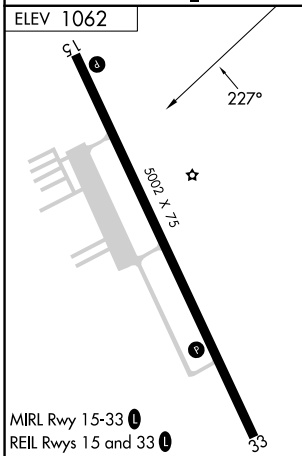
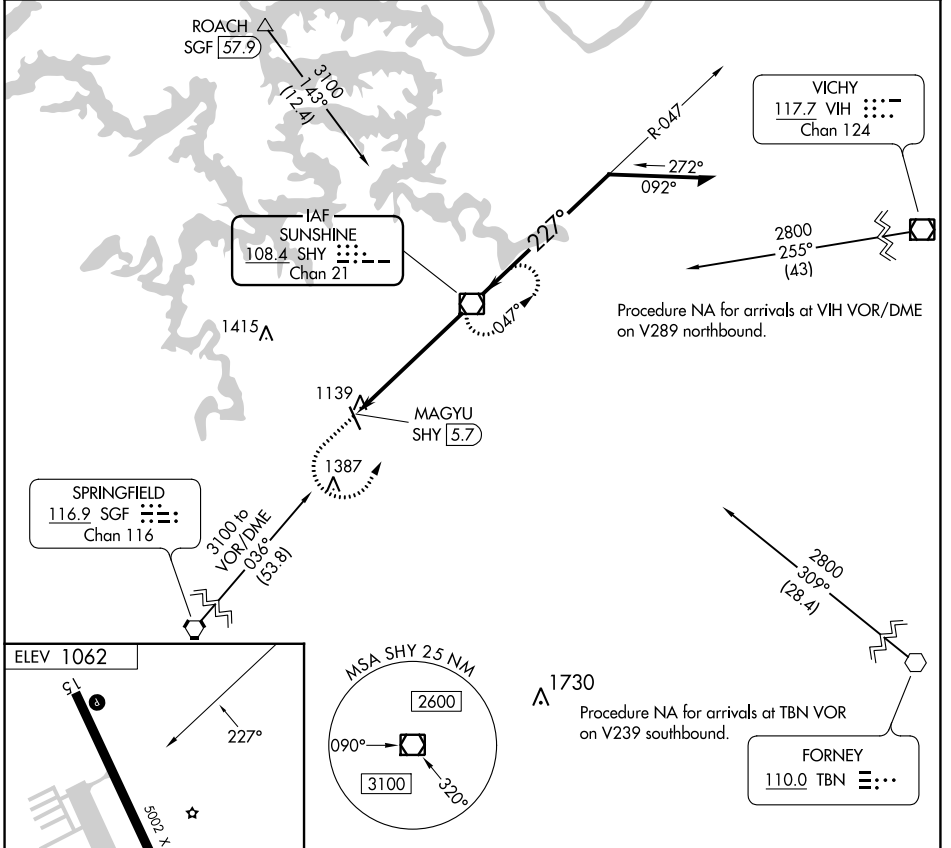
VOR/DME SHY 108.4 Chan 21	APP CRS 227°	Rwy Idg TDZE Apt Elev 1062	N/A N/A
--	------------------------	---	--------------------------

VOR-A

CAMDENTON MEML-LAKE RGNL (OZS)

▽ ▲ NA	MISSED APPROACH: Climb to 3100 then left turn direct SHY VOR/DME and hold.
-------------------------	--

AWOS-3PT 120.225	MIZZU APP CON 124.1 353.925	UNICOM 122.8 (CTAF) 0
----------------------------	---------------------------------------	--



FAF to MAP 5.7 NM						CATEGORY	A	B	C	D
Knots	60	90	120	150	180	CIRCLING	1520-1	458 (500-1)	1700-1¾ 638 (700-1¾)	NA
Min:Sec	5:42	3:48	2:51	2:17	1:54					

NC-3, 22 FEB 2024 to 21 MAR 2024

NC-3, 22 FEB 2024 to 21 MAR 2024