

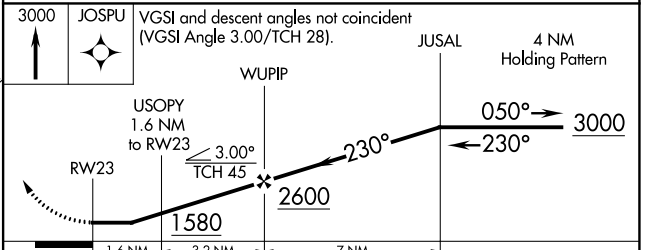
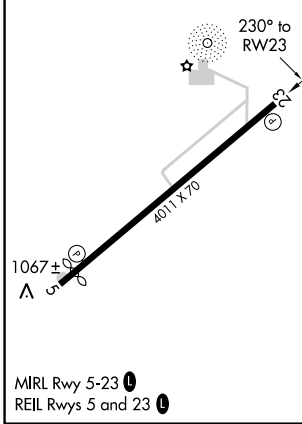
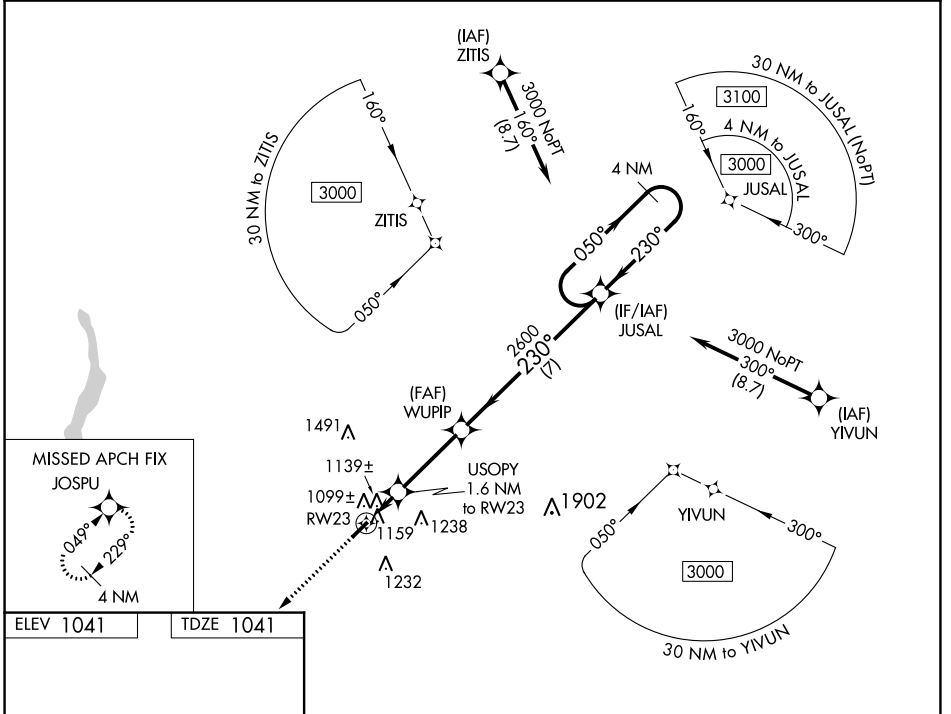
| | | |
|--|------------------------|-------------------------|
| WAAS CH 56528 W23A | APP CRS 230° | Rwy Idg 3741 |
| | | TDZE 1041 |
| | | Apt Elev 1041 |

RNAV (GPS) RWY 23

MIAMI UNIVERSITY (OXD)

| | | |
|-----------------|---|--|
| RNP APCH - GPS. | When Circling to Rwy 5 at night, operational VGSI required, remain on or above VGSI glidepath until threshold. Rwy 23 helicopter visibility reduction below 3/4 SM NA. When local altimeter setting not received, use Covington altimeter setting and increase all MDA 100 feet, increase LP Cat C visibility 3/8 mile, increase LNAV and Circling Cat C visibility 1/4 mile. | MISSED APPROACH: Climb to 3000 direct JOSPU and hold. |
|-----------------|---|--|

| | | | |
|----------------------------|---|-------------------------------|----------------|
| AWOS-3PT 118.625 | CINCINNATI APP CON 121.0 254.25 | UNICOM 122.8 (CTAF) | 122.9 0 |
|----------------------------|---|-------------------------------|----------------|



| CATEGORY | A | B | C | D |
|----------|-----------------------|-----------------------|-------------------------------|----|
| LP MDA | 1400-1 | | 359 (400-1) | NA |
| LNAV MDA | 1420-1 | 379 (400-1) | 1420-1 1/8 379 (400-1 1/8) | NA |
| CIRCLING | 1460-1 419 (500-1) | 1600-1 559 (600-1) | 1600-1 1/2 559 (600-1 1/2) | NA |

EC-2, 22 FEB 2024 to 21 MAR 2024

EC-2, 22 FEB 2024 to 21 MAR 2024

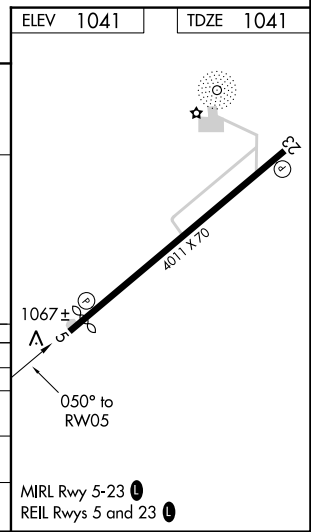
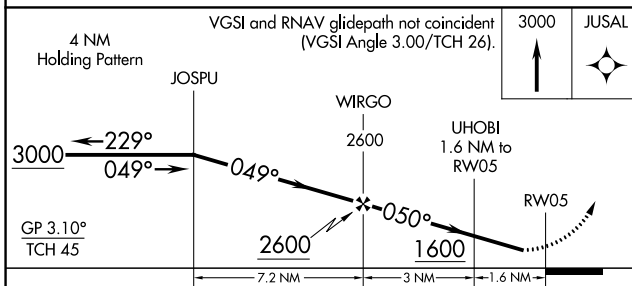
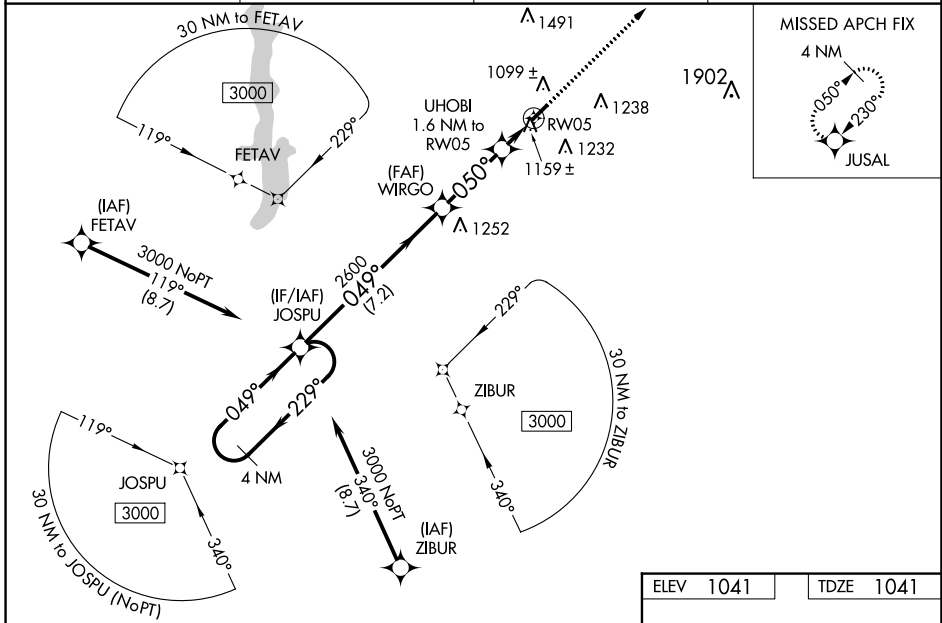
| | | | |
|--|------------------------|-----------------------------|---|
| WAAS CH 49228 W05A | APP CRS 050° | Rwy Idg TDZE Apt Elev | 3741 1041 1041 |
|--|------------------------|-----------------------------|---|

RNAV (GPS) RWY 5

MIAMI UNIVERSITY (OXD)

| | | |
|-----------------|---|--|
| RNP APCH - GPS. | <p>Baro-VNAV NA when using Covington altimeter setting. Straight-in/Circling Rwy 5 at low, operational VGSi required, remain on or above VGSi glidepath until threshold. Rwy 5 helicopter visibility reduction below 1 SM NA. When local altimeter setting not received, use Covington altimeter setting: increase LPV DA to 1393 and all visibilities 1/8 SM; increase LNAV/VNAV DA to 1419 and all visibilities 1/4 SM; increase all MDA 100 feet and visibility LNAV Cat C 3/8 SM and Circling Cat C 1/2 SM.</p> | <p>MISSED APPROACH: Climb to 3000 direct JUSAL and hold.</p> |
|-----------------|---|--|

| | | | |
|----------------------------|---|-------------------------------|--------------|
| AWOS-3PT 118.625 | CINCINNATI APP CON 121.0 254.25 | UNICOM 122.8 (CTAF) | 122.9 |
|----------------------------|---|-------------------------------|--------------|



| CATEGORY | A | B | C | D |
|--------------|-----------------------|-----------------------|-------------------------|----|
| LPV DA | 1304-1 | 263 (300-1) | | NA |
| LNAV/VNAV DA | 1330-1 | 289 (300-1) | | NA |
| LNAV MDA | 1420-1 | 379 (400-1) | | NA |
| CIRCLING | 1460-1 419 (500-1) | 1600-1 559 (600-1) | 1600-1½ 559 (600-1½) | NA |

EC-2, 22 FEB 2024 to 21 MAR 2024

EC-2, 22 FEB 2024 to 21 MAR 2024