

WAAS CH 49026 W02A	APP CRS 017°	Rwy Idg TDZE Apt Elev	6020 182 194
--	------------------------	-----------------------------	---

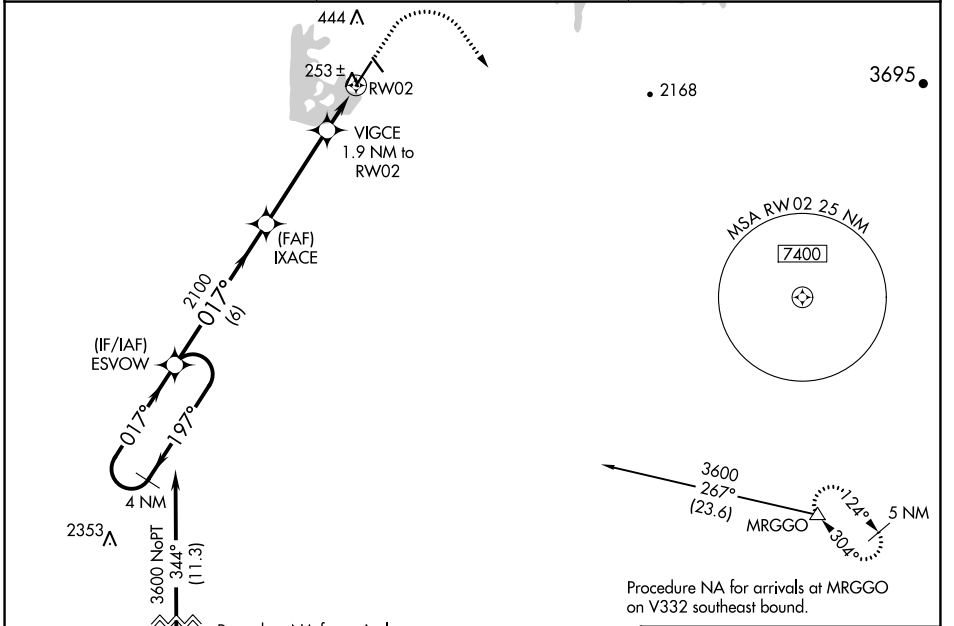
RNAV (GPS) RWY 2

OROVILLE MUNI (OVE)

▽ For uncompensated Baro-VNAV systems, LNAV/VNAV NA below -2°C (29°F) or above 54°C (130°F). Circling NA northeast of Rwy 13-31. DME/DME RNP-0.3 NA.

MISSED APPROACH: Climb to 650 then climbing right turn to 6000 direct MRGGO and hold, continue climb-in-hold to 6000.

ASOS 121.425	NORCAL APP CON 125.4 259.1	UNICOM 122.8(CTAF)
------------------------	--------------------------------------	------------------------------

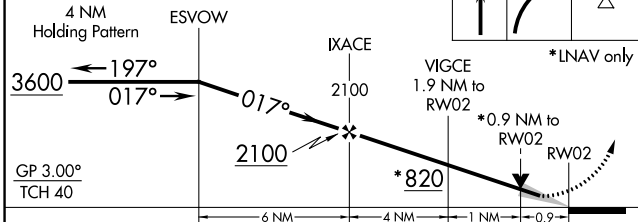


SW-2, 22 FEB 2024 to 21 MAR 2024

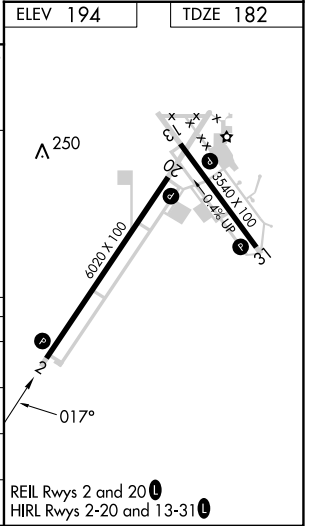
SW-2, 22 FEB 2024 to 21 MAR 2024

Procedure NA for arrivals at YUBBA on V23 southbound.

VGSI and RNAV glidepath angles not coincident (VGSI Angle 3.00/TCH 44).



CATEGORY	A	B	C	D
LPV DA		432-7/8	250 (300-7/8)	
LNAV/VNAV DA		432-7/8	250 (300-7/8)	
LNAV MDA		520-1	338 (400-1)	
C CIRCLING	580-1 386 (400-1)	660-1 466 (500-1)	660-1½ 466 (500-1½)	780-2 586 (600-2)



REIL Rws 2 and 20
HIRL Rws 2-20 and 13-31

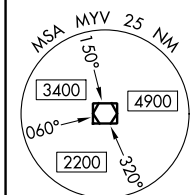
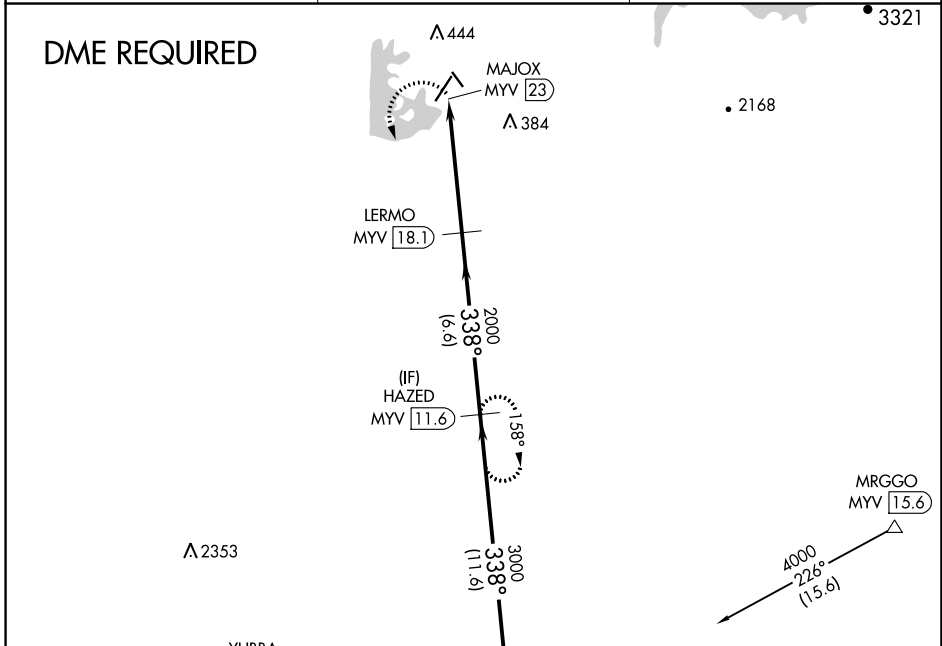
VOR/DME MYV 110.8 Chan 45	APP CRS 338°	Rwy Idg TDZE Apt Elev N/A N/A 194
---	------------------------	---

VOR-A
OROVILLE MUNI (OVE)

▼ Circling NA northeast of Rwy 13-31. DME required.

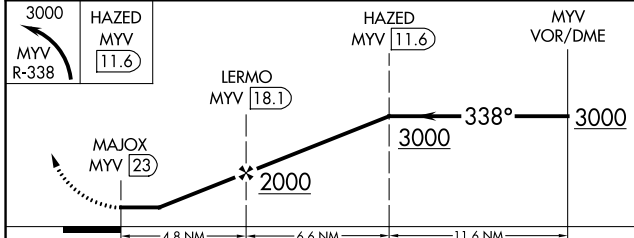
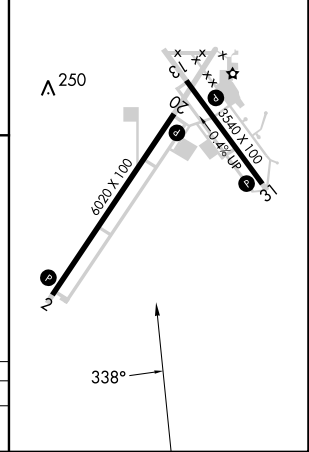
MISSED APPROACH: Climbing left turn to 3000 on MYV VOR/DME R-338 to HAZED/MYV 11.6 DME and hold.

ASOS 121.425	NORCAL APP CON 125.4 259.1	UNICOM 122.8 (CTAF)
------------------------	--------------------------------------	-------------------------------



IAF
MARYSVILLE
110.8 MYV
Chan 45

ELEV 194
REIL Rws 2 and 20
HIRL Rws 2-20 and 13-31



CATEGORY	A	B	C	D
CIRCLING	840-1	646 (700-1)	840-1¾ 646 (700-1¾)	840-2 646 (700-2)

SW-2, 22 FEB 2024 to 21 MAR 2024

SW-2, 22 FEB 2024 to 21 MAR 2024