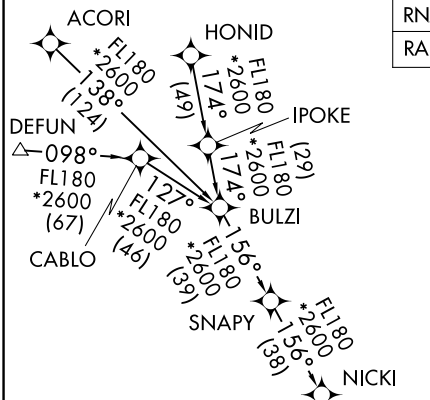


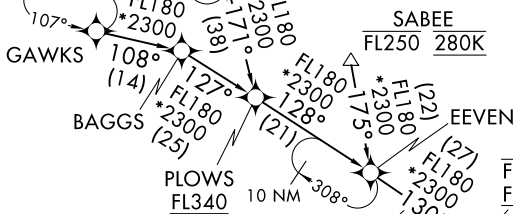
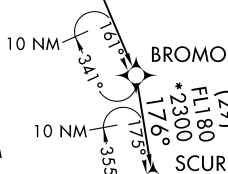
CUURT ONE ARRIVAL (RNAV) Transition Routes

| |
|------------------------------|
| RNAV 1 - DME/DME/IRU or GPS. |
| RADAR required. |

MIAMI APP CON
120.5 350.225
ATIS
125.9



NOTE: Jet aircraft only.
NOTE: Do not file BROMO or SCURF Transition - to be assigned by ATC.
NOTE: SABEE Transition for traffic departing KTPA area only.

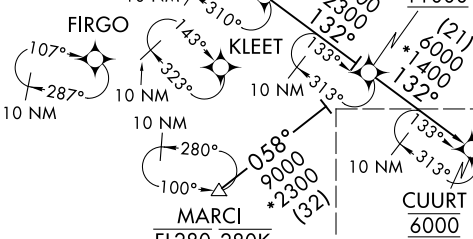


SABEE
FL250 280K

EVEN
FL280 280K
FL230

NAGIE
FL280 280K
FL230

WESTN
11000



MARCI
FL280 280K
FL210

CUURT
6000

See following page for arrival routes.

NOTE: Chart not to scale.

- ACORI TRANSITION (ACORI.CUURT1)
- BROMO TRANSITION (BROMO.CUURT1)
- DEFUN TRANSITION (DEFUN.CUURT1)
- GAWKS TRANSITION (GAWKS.CUURT1)
- HONID TRANSITION (HONID.CUURT1)
- MARCI TRANSITION (MARCI.CUURT1)
- SABEE TRANSITION (SABEE.CUURT1)
- SCURF TRANSITION (SCURF.CUURT1)

CUURT ONE ARRIVAL (RNAV) Transition Routes

(CUURT.CUURT1) 23166

AL-256 (FAA)

MIAMI-OPA LOCKA EXEC (OPF)

CUURT ONE ARRIVAL (RNAV) Arrival Routes

MIAMI, FLORIDA

RNAV 1 - DME/DME/IRU or GPS.

RADAR required.

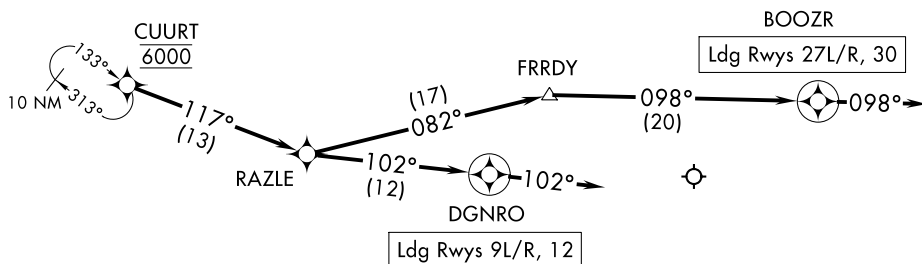
MIAMI APP CON
120.5 350.225
ATIS
125.9

NOTE: Jet aircraft only.

NOTE: Landing east use Rwy 9L Transition, landing west use Rwy 27R Transition.

Expect runway assignment from MIA approach prior to CUURT.

NOTE: Between 2300L and 0700L expect Rwy 12.



SE-3, 22 FEB 2024 to 21 MAR 2024

SE-3, 22 FEB 2024 to 21 MAR 2024

NOTE: Chart not to scale.

ARRIVAL ROUTE DESCRIPTION

From CUURT on track 117° to RAZLE.

LANDING RUNWAYS 9L/R, 12: From RAZLE on track 102° to DGNRO, then on track 102°. Expect RADAR vectors to final approach course.

LANDING RUNWAYS 27L/R, 30: From RAZLE on track 082° to FRRDY, then on track 098° to BOOZR, then on track 098°. Expect RADAR vectors to final approach course.

CUURT ONE ARRIVAL (RNAV) Arrival Routes

MIAMI, FLORIDA

(CUURT.CUURT1) 15JUN23

MIAMI-OPA LOCKA EXEC (OPF)

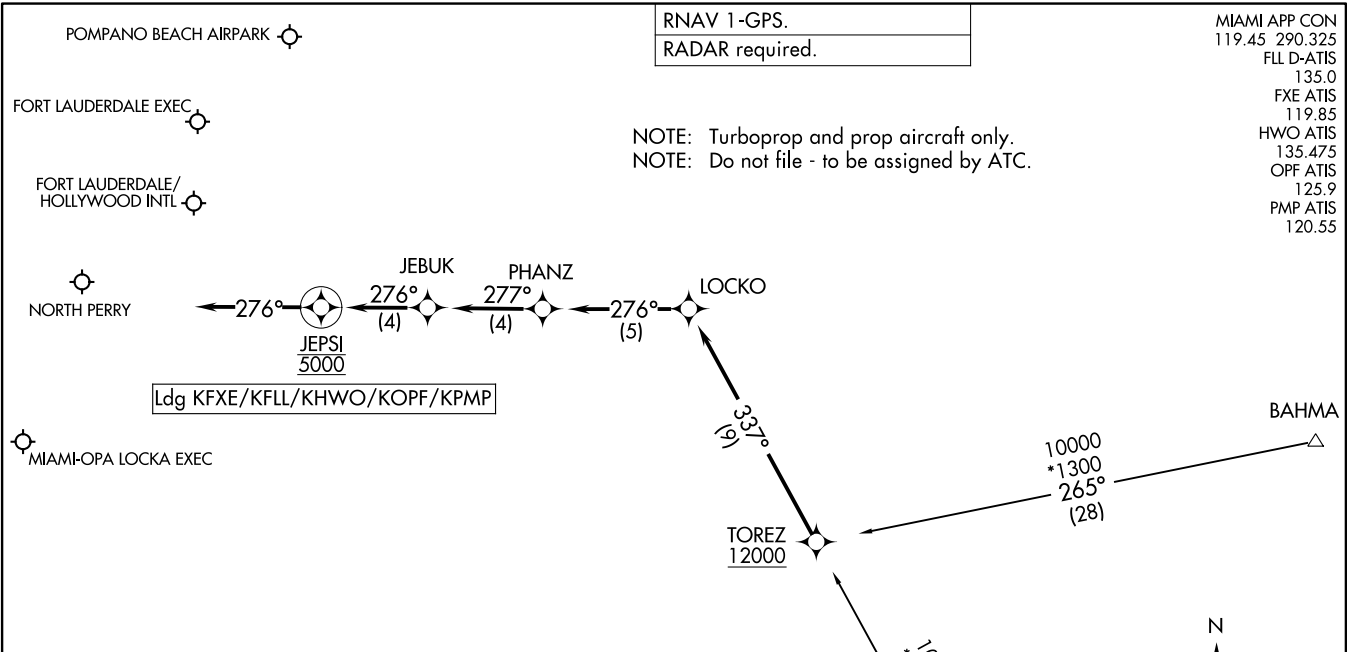
TOREZ ONE ARRIVAL (RNAV)
(TOREZ.TOREZ1) 15JUN23

(TOREZ.TOREZ1) 23166
TOREZ ONE ARRIVAL (RNAV)

RNAV 1-GPS.
RADAR required.

MIAMI APP CON
119.45 290.325
FLL D-ATIS
135.0
FXE ATIS
119.85
HWO ATIS
135.475
OPF ATIS
125.9
PMP ATIS
120.55

NOTE: Turboprop and prop aircraft only.
NOTE: Do not file - to be assigned by ATC.



ARRIVAL ROUTE DESCRIPTION

BAHMA TRANSITION (BAHMA.TOREZ1)
MKERS TRANSITION (MKERS.TOREZ1)

LANDING ALL AIRPORTS: From TOREZ on track 337° to LOCKO, then on track 276° to PHANZ, then on track 277° to JEBUK, then on track 276° to cross JEPSI at 5000, then on track 276°. Expect RADAR vectors to final approach course.

NOTE: Chart not to scale.

MIAMI, FLORIDA

MIAMI, FLORIDA

AL-256 (FAA)

DVALL THREE ARRIVAL

MIAMI, FLORIDA

MIAMI APP CON
 120.5 350.225
 FLL D-ATIS
 135.0
 FXE ATIS
 119.85
 KHST ATIS ★
 132.275 269.9
 MIA D-ATIS
 119.15
 OPF ATIS
 125.9
 PMP ATIS
 120.55
 TMB ATIS
 124.0

WEVER
 N25° 33.14' - W80° 54.82'
**TURBOJET VERTICAL NAVIGATION
 PLANNING INFORMATION**

Miami Intl landing East: Expect clearance
 to cross at 10000' and 250K.
 Miami Intl landing West: Expect clearance
 to cross at 14000' and 250K.

LA BELLE
 110.4 LBV
 Chan 41

POMPANO BEACH AIR PARK
 FORT LAUDERDALE EXEC
 FORT LAUDERDALE-HOLLYWOOD INTL
 MIAMI-OPA LOCKA EXEC

DOLPHIN
 113.9 DHP
 Chan 86
 N25° 48.00' - W80° 20.94'

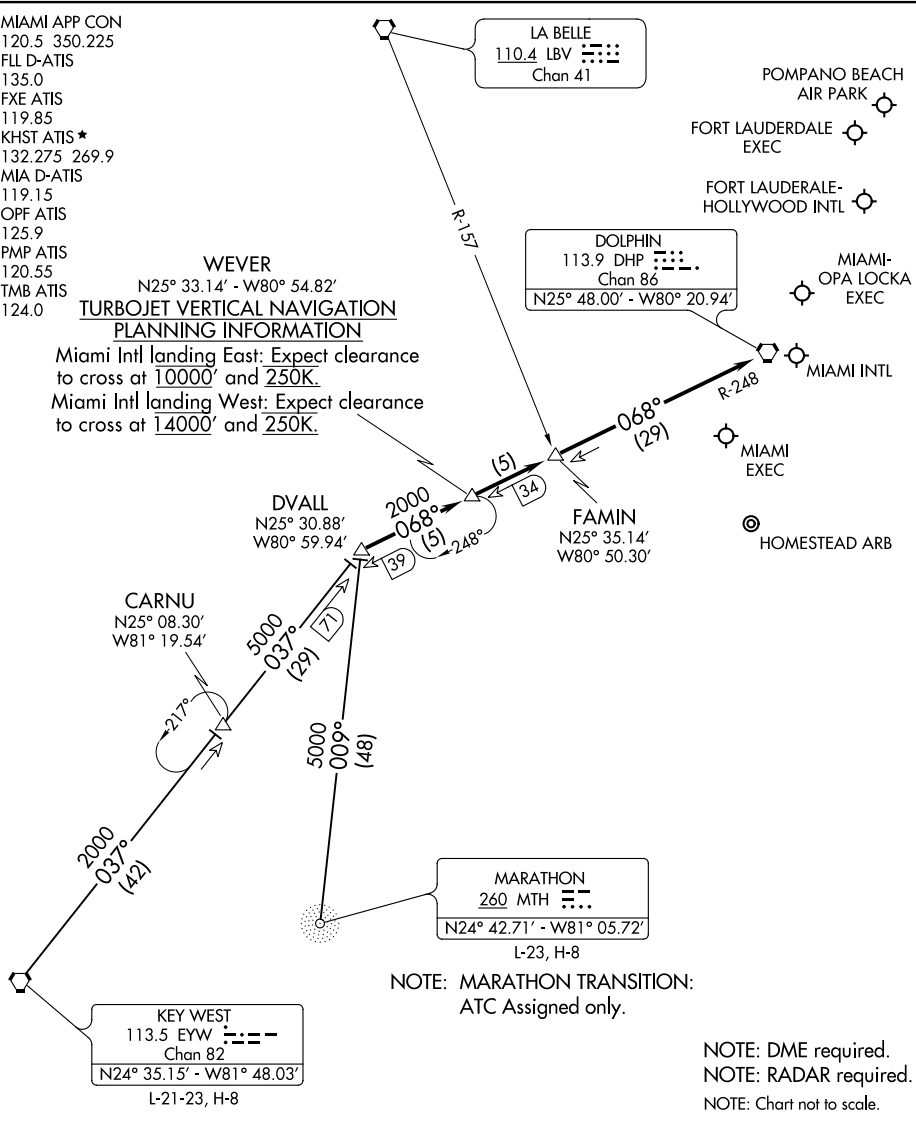
FAMIN
 N25° 35.14' - W80° 50.30'

MARATHON
 260 MTH
 L-23, H-8
 N24° 42.71' - W81° 05.72'

KEY WEST
 113.5 EYW
 Chan 82
 N24° 35.15' - W81° 48.03'
 L-21-23, H-8

NOTE: MARATHON TRANSITION:
 ATC Assigned only.

NOTE: DME required.
 NOTE: RADAR required.
 NOTE: Chart not to scale.



SE-3, 22 FEB 2024 to 21 MAR 2024

SE-3, 22 FEB 2024 to 21 MAR 2024

KEY WEST TRANSITION (EYW.DVALL3): From over EYW VORTAC on EYW R-037 to DVALL INT. Thence. . . .
MARATHON TRANSITION (MTH.DVALL3): From over MTH NDB on bearing 009° to DVALL INT. Thence. . . .
 . . . From over DVALL INT via DHP R-248 to DHP VORTAC. Expect RADAR vectors to final approach course after FAMIN INT.

DVALL THREE ARRIVAL

MIAMI, FLORIDA

BHHIA THREE ARRIVAL (RNAV) Transition Routes

FORT LAUDERDALE, FLORIDA

MIAMI APP CON
120.5 350.225
FLL D-ATIS
135.0
FXE ATIS
119.85
OPF ATIS
125.9
PMP ATIS
120.55

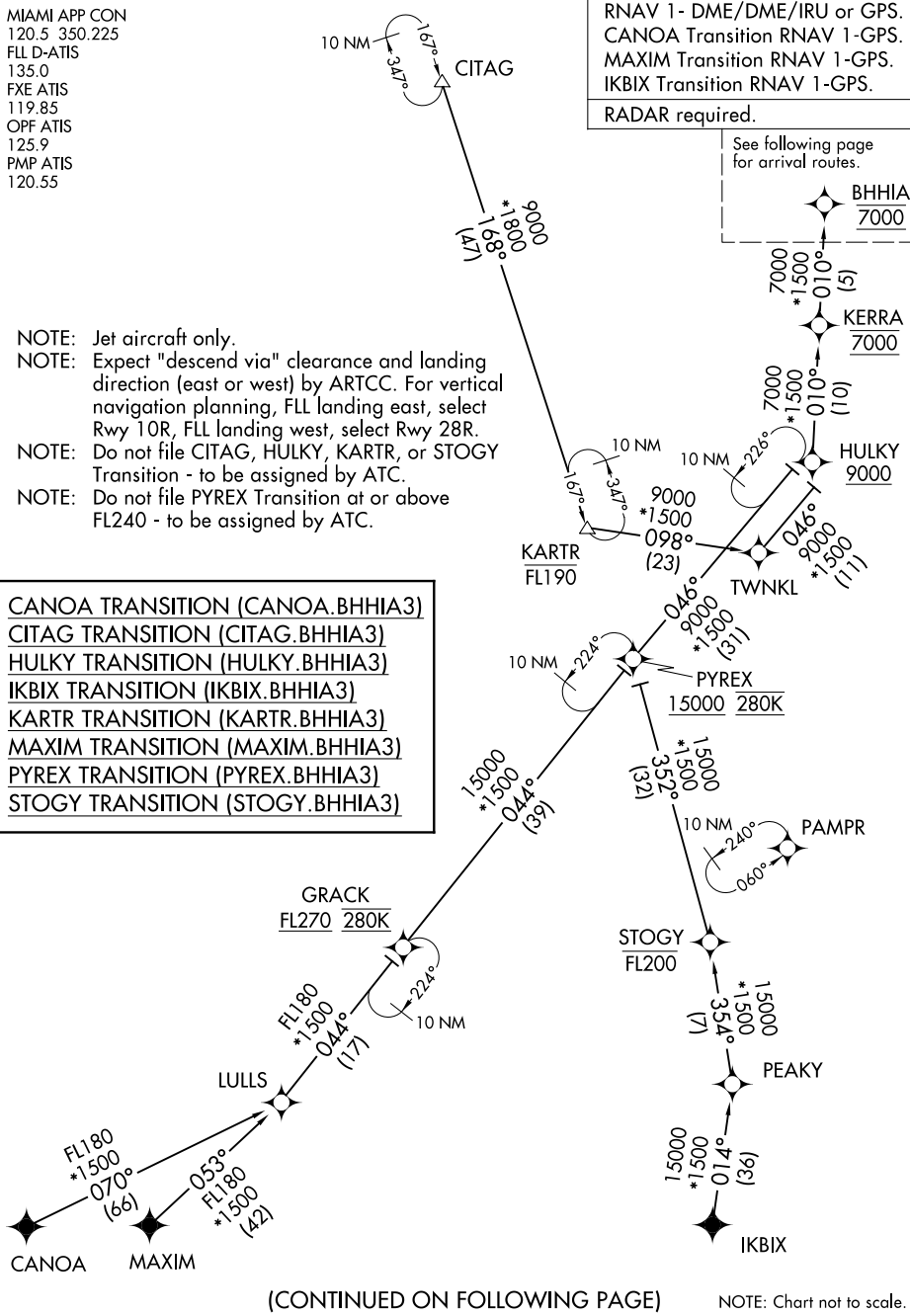
RNAV 1 - DME/DME/IRU or GPS.
CANOA Transition RNAV 1-GPS.
MAXIM Transition RNAV 1-GPS.
IKBIX Transition RNAV 1-GPS.

RADAR required.

See following page
for arrival routes.

- NOTE: Jet aircraft only.
- NOTE: Expect "descend via" clearance and landing direction (east or west) by ARTCC. For vertical navigation planning, FLL landing east, select Rwy 10R, FLL landing west, select Rwy 28R.
- NOTE: Do not file CITAG, HULKY, KARTR, or STOGY Transition - to be assigned by ATC.
- NOTE: Do not file PYREX Transition at or above FL240 - to be assigned by ATC.

- CANOA TRANSITION (CANOA.BHHIA3)
- CITAG TRANSITION (CITAG.BHHIA3)
- HULKY TRANSITION (HULKY.BHHIA3)
- IKBIX TRANSITION (IKBIX.BHHIA3)
- KARTR TRANSITION (KARTR.BHHIA3)
- MAXIM TRANSITION (MAXIM.BHHIA3)
- PYREX TRANSITION (PYREX.BHHIA3)
- STOGY TRANSITION (STOGY.BHHIA3)



(CONTINUED ON FOLLOWING PAGE)

NOTE: Chart not to scale.

SE-3, 22 FEB 2024 to 21 MAR 2024

SE-3, 22 FEB 2024 to 21 MAR 2024

BHHIA THREE ARRIVAL (RNAV) Transition Routes

FORT LAUDERDALE, FLORIDA

BHHIA, BHHIA3) 03NOV22

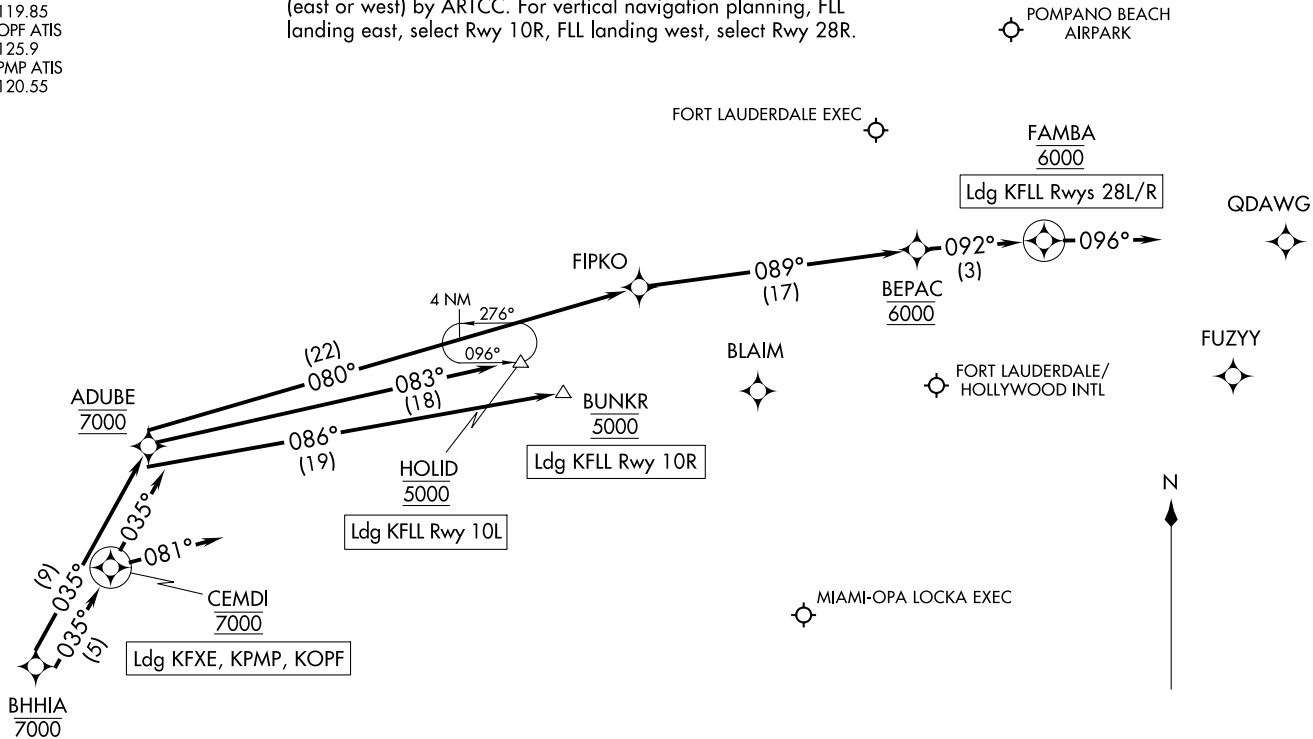
BHHIA THREE ARRIVAL (RNAV) Arrival Routes

FORT LAUDERDALE, FLORIDA

MIAMI APP CON
120.5 350.225
FLL D-ATIS
135.0
FXE ATIS
119.85
OPF ATIS
125.9
PMP ATIS
120.55

NOTE: Jet aircraft only.
NOTE: Expect "descend via" clearance and landing direction
(east or west) by ARTCC. For vertical navigation planning, FLL
landing east, select Rwy 10R, FLL landing west, select Rwy 28R.

RNAV 1-DME/DME/IRU or GPS.
RADAR required.



(NARRATIVE ON FOLLOWING PAGE)

NOTE: Chart not to scale.

(BHHIA, BHHIA3) 22307

AL:744 (FAA)
BHHIA THREE ARRIVAL (RNAV) Arrival Routes

FORT LAUDERDALE, FLORIDA

ARRIVAL ROUTE DESCRIPTION

KFLL: From BHHIA on track 035° to cross ADUBE at 7000.

LANDING KFLL RUNWAY 10L: From ADUBE on track 083° to cross HOLID at 5000. Expect ILS or LOC Rwy 10L approach.

LANDING KFLL RUNWAY 10R: From ADUBE on track 086° to cross BUNKR at 5000. Expect ILS or LOC Rwy 10R approach.

LANDING KFLL RUNWAYS 28L/R: From ADUBE on track 080° to FIPKO, then on track 089° to cross BEPAC at 6000, then on track 092° to cross FAMBA at 6000, then on track 096°. Expect RADAR vectors to final approach course.

LANDING KFXE/KPMP: From BHHIA on track 035° to cross CEMDI at 7000, then on track 035°. Expect RADAR vectors to final approach course.

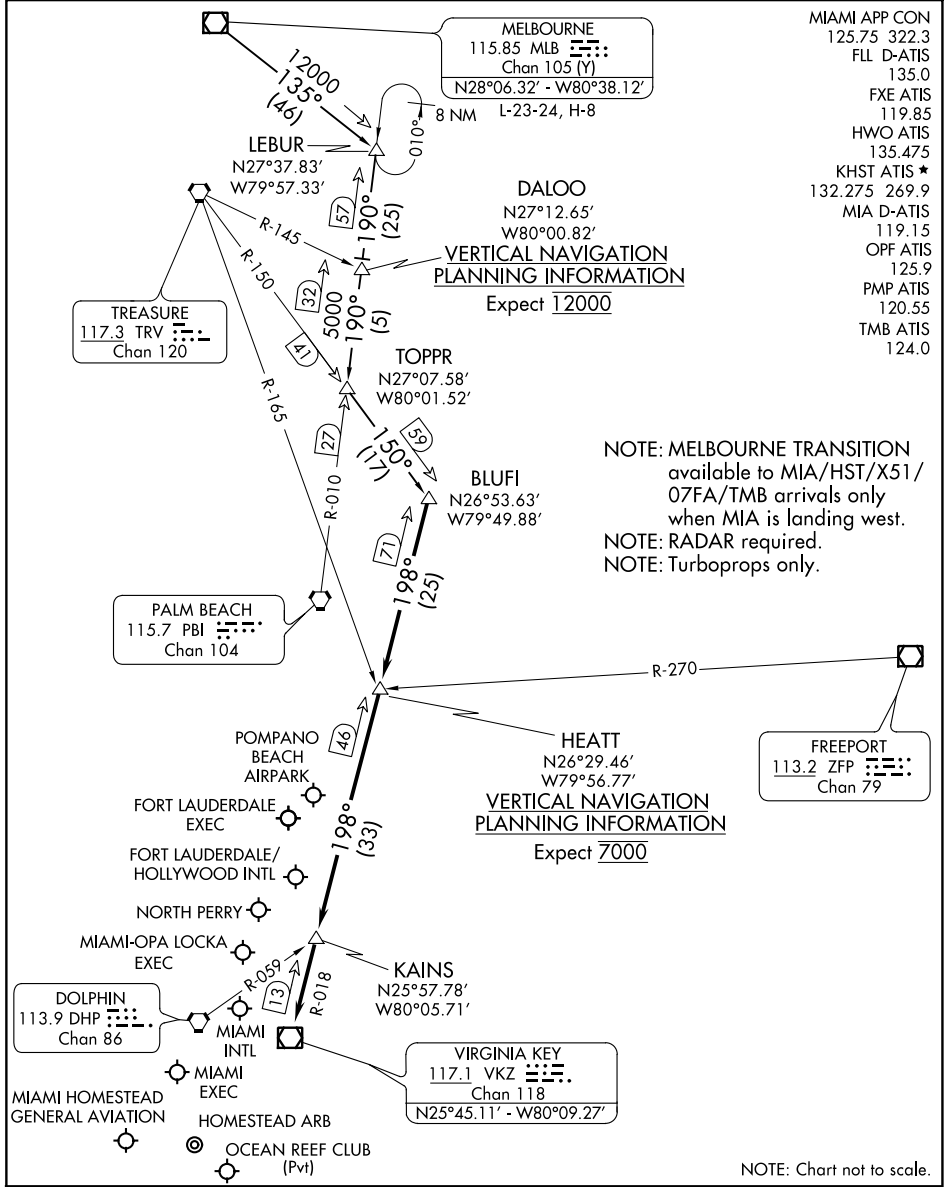
LANDING KOPF: From BHHIA on track 035° to cross CEMDI at 7000, then on heading 081°. Expect RADAR vectors to final approach course.

SE-3, 22 FEB 2024 to 21 MAR 2024

SE-3, 22 FEB 2024 to 21 MAR 2024

BLUFI FOUR ARRIVAL

FORT LAUDERDALE, FLORIDA



- MIAMI APP CON 125.75 322.3
- FLL D-ATIS 135.0
- FXE ATIS 119.85
- HWO ATIS 135.475
- KHST ATIS ★ 132.275 269.9
- MIA D-ATIS 119.15
- OPF ATIS 125.9
- PMP ATIS 120.55
- TMB ATIS 124.0

SE-3, 22 FEB 2024 to 21 MAR 2024

SE-3, 22 FEB 2024 to 21 MAR 2024

MELBOURNE TRANSITION (MLB.BLUFI4): From over MLB VOR/DME on MLB R-135 to LEBUR INT/MLB 46 DME, then on PBI R-010 to TOPPR INT/PBI 30 DME, then on TRV R-150 to BLUFI INT. Thence . . .
 . . . from over BLUFI INT/VKZ 71 DME on VKZ R-018 to HEATT INT/VKZ 46 DME, then on VKZ R-018 to KAINS INT, then on VKZ R-018 to VKZ VOR/DME. Expect RADAR vectors to final approach course after KAINS INT.

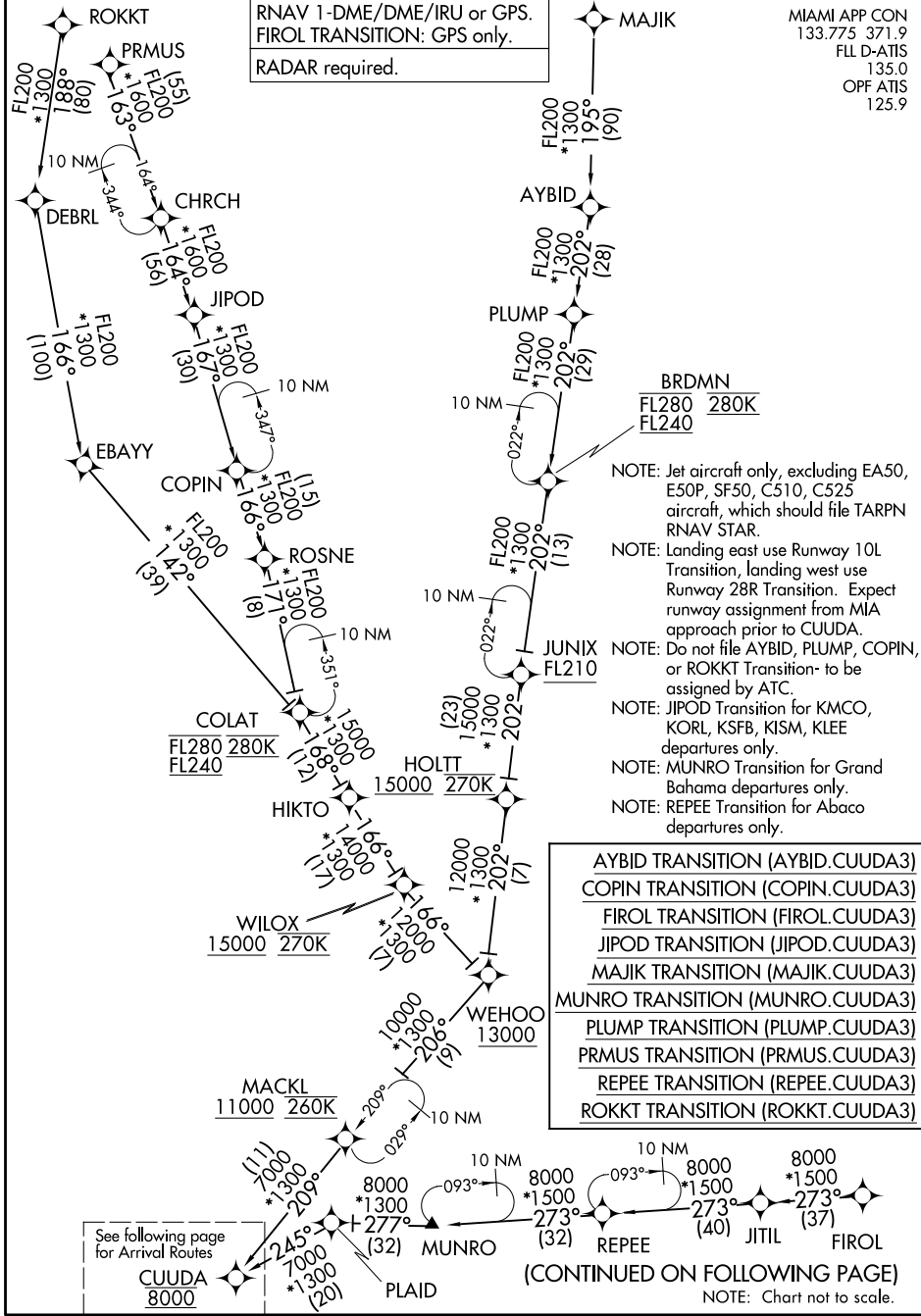
BLUFI FOUR ARRIVAL

FORT LAUDERDALE, FLORIDA

CUUDA THREE ARRIVAL (RNAV) Transition Routes FORT LAUDERDALE, FLORIDA

| |
|-----------------------------|
| RNAV 1-DME/DME/IRU or GPS. |
| FIROL TRANSITION: GPS only. |
| RADAR required. |

MIAMI APP CON
133.775 371.9
FL D-ATIS
135.0
OPF ATIS
125.9



- NOTE: Jet aircraft only, excluding EA50, E50P, SF50, C510, C525 aircraft, which should file TARPEN RNAV STAR.
- NOTE: Landing east use Runway 10L Transition, landing west use Runway 28R Transition. Expect runway assignment from MIA approach prior to CUUDA.
- NOTE: Do not file AYBID, PLUMP, COPIN, or ROKKT Transition- to be assigned by ATC.
- NOTE: JIPOD Transition for KMCO, KORL, KSFB, KISM, KLEE departures only.
- NOTE: MUNRO Transition for Grand Bahama departures only.
- NOTE: REPEE Transition for Abaco departures only.

- AYBID TRANSITION (AYBID.CUUDA3)
- COPIN TRANSITION (COPIN.CUUDA3)
- FIROL TRANSITION (FIROL.CUUDA3)
- JIPOD TRANSITION (JIPOD.CUUDA3)
- MAJIK TRANSITION (MAJIK.CUUDA3)
- MUNRO TRANSITION (MUNRO.CUUDA3)
- PLUMP TRANSITION (PLUMP.CUUDA3)
- PRMUS TRANSITION (PRMUS.CUUDA3)
- REPEE TRANSITION (REPEE.CUUDA3)
- ROKKT TRANSITION (ROKKT.CUUDA3)

See following page for Arrival Routes

CUUDA
8000

(CONTINUED ON FOLLOWING PAGE)
NOTE: Chart not to scale.

SE-3, 22 FEB 2024 to 21 MAR 2024

SE-3, 22 FEB 2024 to 21 MAR 2024

CUUDA THREE ARRIVAL (RNAV) Transition Routes FORT LAUDERDALE, FLORIDA

CUUDA THREE ARRIVAL (RNAV) Arrival Routes

FORT LAUDERDALE, FLORIDA

MIAMI APP CON
 133.775 371.9
 FLL D-ATIS
 135.0
 OPF ATIS
 125.9

RNAV 1-DME/DME/IRU or GPS.
 FIROL TRANSITION: GPS only.

RADAR required.

NOTE: Jet aircraft only, excluding EA50, E50P, SF50, C510, C525 aircraft, which should file TARPEN RNAV STAR.

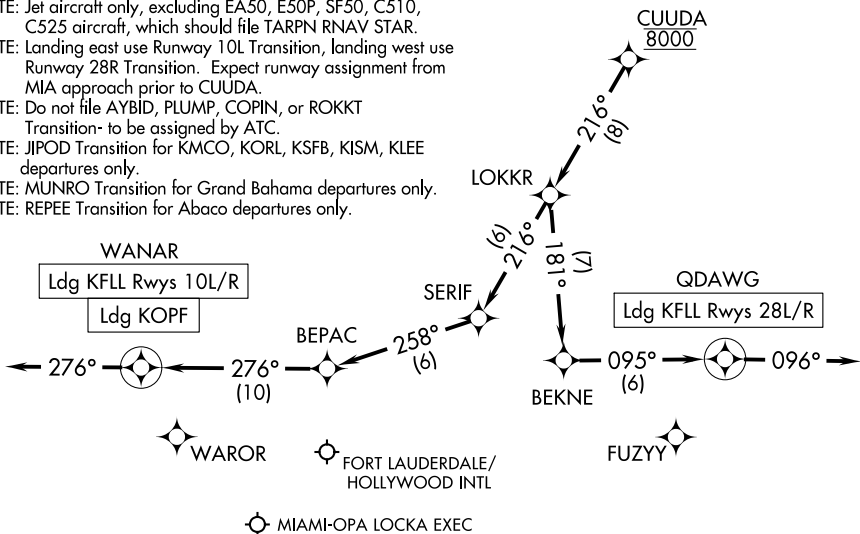
NOTE: Landing east use Runway 10L Transition, landing west use Runway 28R Transition. Expect runway assignment from MIA approach prior to CUUDA.

NOTE: Do not file AYBID, PLUMP, COPIN, or ROKKT Transition- to be assigned by ATC.

NOTE: JIPOD Transition for KMCO, KORL, KSFB, KISM, KLEE departures only.

NOTE: MUNRO Transition for Grand Bahama departures only.

NOTE: REPEE Transition for Abaco departures only.



NOTE: Chart not to scale.

ARRIVAL ROUTE DESCRIPTION

FLL: From CUUDA on track 216° to LOKKR.

LANDING KFL RUNWAYS 10L/R: From LOKKR on track 216° to SERIF, then on track 258° to BEPAC, then on track 276° to WANAR, then on track 276°.
 Expect RADAR vectors to final approach course.

LANDING KFL RUNWAYS 28L/R: From LOKKR on track 181° to BEKNE, then on track 095° to QDAWG, then on track 096°.
 Expect RADAR vectors to final approach course.

LANDING KOPF: From CUUDA on track 216° to LOKKR, then on track 216° to SERIF, then on track 258° to BEPAC, then on track 276° to WANAR, then on track 276°.
 Expect RADAR vectors to final approach course.

DEKAL EIGHT ARRIVAL
 (DEKAL.DEKAL8) 03NOV22

(DEKAL.DEKAL8) 22307
 DEKAL EIGHT ARRIVAL

AL-744 (FAA)

FORT LAUDERDALE, FLORIDA

MIAMI APP CON
 119.45 290.325
 FLL D-ATIS
 135.0
 FXE ATIS
 119.85
 HWO ATIS
 135.475
 OPF ATIS
 125.9
 PMP ATIS
 120.55

FORT LAUDERDALE
 114.4 FLL
 Chan 91
 N26°04.44'-W80°09.99'

POMPANO BEACH AIRPARK
 FORT LAUDERDALE EXEC

Ldg KFXXE, KFLI, KOPF, KHWO, KPMP

FORT LAUDERDALE/HOLLYWOOD INTL

MIAMI-OPA LOCKA EXEC

NORTH PERRY

NOTE: RADAR required.
 NOTE: DME required.

BIMINI
 116.7 ZBV
 Chan 114
 N25°42.25'-W79°17.67'

FREEPORT
 113.2 ZFP
 Chan 79
 N26°33.32'-W78°41.87'
 L-23, H-8

NASSAU
 112.7 ZQA
 Chan 74
 N25°01.53'-W77°26.79'
 L-23, H-8

BORDO
 N24°00.00'
 W78°27.53'
 H-8



ARRIVAL ROUTE DESCRIPTION

BORDO TRANSITION (BORDO.DEKAL8): From over BORDO on ZBV R-160 to ZBV VORTAC, then on ZBV R-300 to DEKAL. Thence. . . .

FREEPORT TRANSITION (ZFP.DEKAL8): From over ZFP VOR/DME on ZFP R-215 and ZBV R-036 to ZBV VORTAC, then on ZBV R-300 to DEKAL. Thence. . . .

NASSAU TRANSITION (ZQA.DEKAL8): From over ZQA VOR/DME on ZQA R-298 to RAJAY, then on ZBV R-116 to ZBV VORTAC, then on ZBV R-300 to DEKAL. Thence. . . .

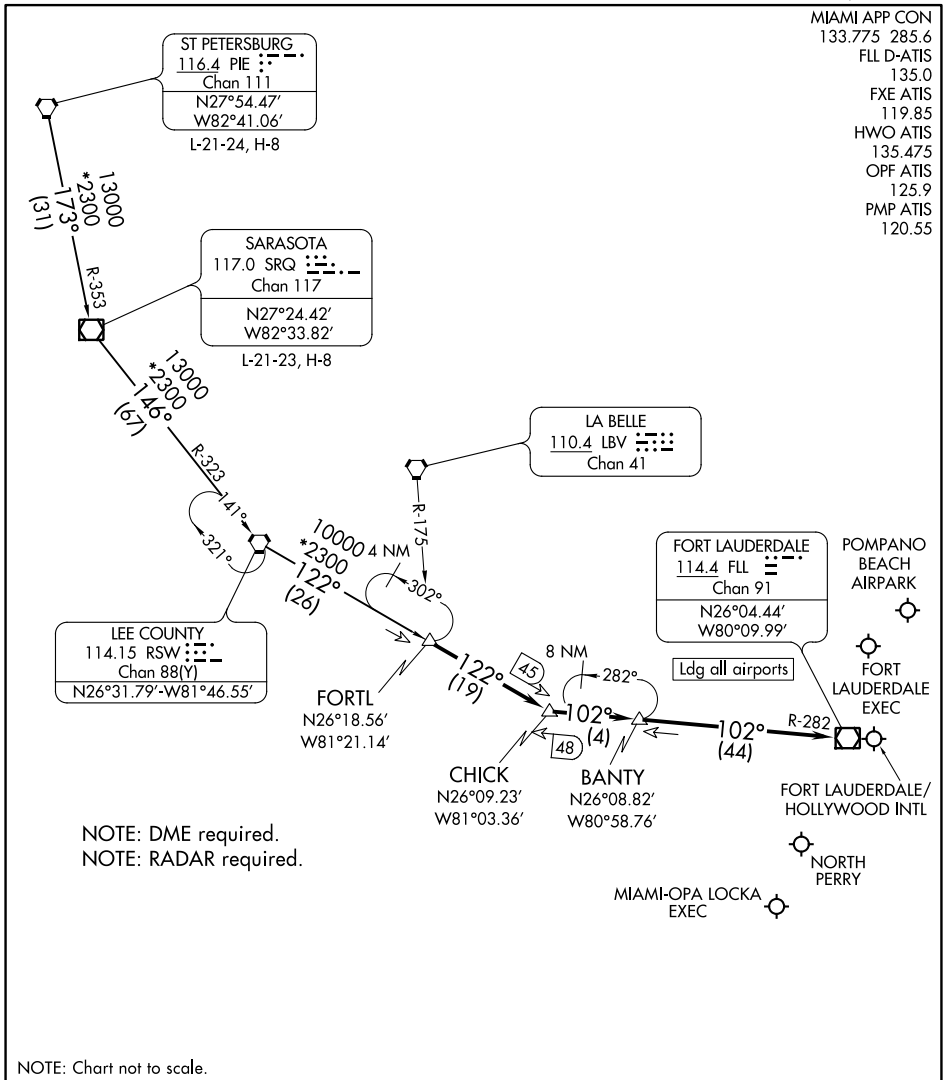
LANDING ALL AIRPORTS: From DEKAL on FORT LAUDERDALE VOR/DME (FLL) R-121 to FLL VOR/DME. Expect RADAR vectors to final approach course.

NOTE: Chart not to scale.

FORT LAUDERDALE, FLORIDA

FORTL NINE ARRIVAL

FORT LAUDERDALE, FLORIDA



NOTE: DME required.
 NOTE: RADAR required.

NOTE: Chart not to scale.

ARRIVAL ROUTE DESCRIPTION

ST PETERSBURG TRANSITION (PIE.FORTL9): From over PIE VORTAC on PIE R-173 and SRQ R-353 to SRQ VOR/DME, then on SRQ R-146 and RSW R-323 to RSW VORTAC, then on RSW R-122 to FORTL. Thence. . .

SARASOTA TRANSITION (SRQ.FORTL9): From over SRQ VOR/DME on SRQ R-146 and RSW R-323 to RSW VORTAC, then on RSW R-122 to FORTL. Thence. . .

LANDING ALL AIRPORTS: From FORTL on RSW R-122 to CHICK, then on FORT LAUDERDALE VOR/DME (FLL) R-282 to FLL VOR/DME. Expect RADAR vectors to final approach course.

FORTL NINE ARRIVAL

FORT LAUDERDALE, FLORIDA

SE-3, 22 FEB 2024 to 21 MAR 2024

SE-3, 22 FEB 2024 to 21 MAR 2024

MIAMI APP CON
128.6 306.975
FLL D-ATIS
135.0
FXE ATIS
119.85
HWO ATIS
135.475
OPF ATIS
125.9
PMP ATIS
120.55

(KYAKS.KYAKS3) 22307

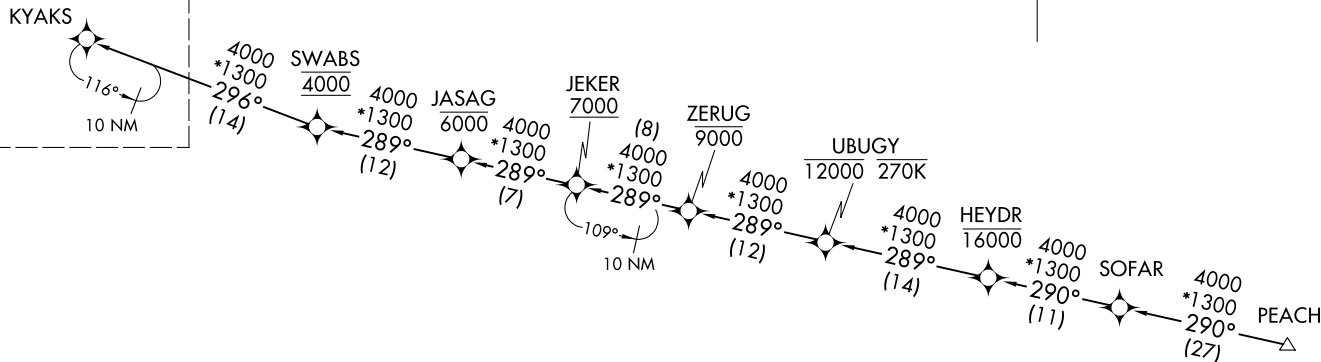
AL-744 (FAA)

FORT LAUDERDALE, FLORIDA



NOTE: Turboprop and prop aircraft only.
NOTE: Do not file JEKER Transition - to be assigned by ATC.

See following page
for arrival routes.



RNAV 1-GPS.
RADAR required.

JEKER TRANSITION (JEKER.KYAKS3)
PEACH TRANSITION (PEACH.KYAKS3)
SOFAR TRANSITION (SOFAR.KYAKS3)

(NARRATIVE ON FOLLOWING PAGE)
(CONTINUED ON FOLLOWING PAGE)

NOTE: Chart not to scale.

KYAKS THREE ARRIVAL (RNAV) Transition Routes
(KYAKS.KYAKS3) 03NOV22

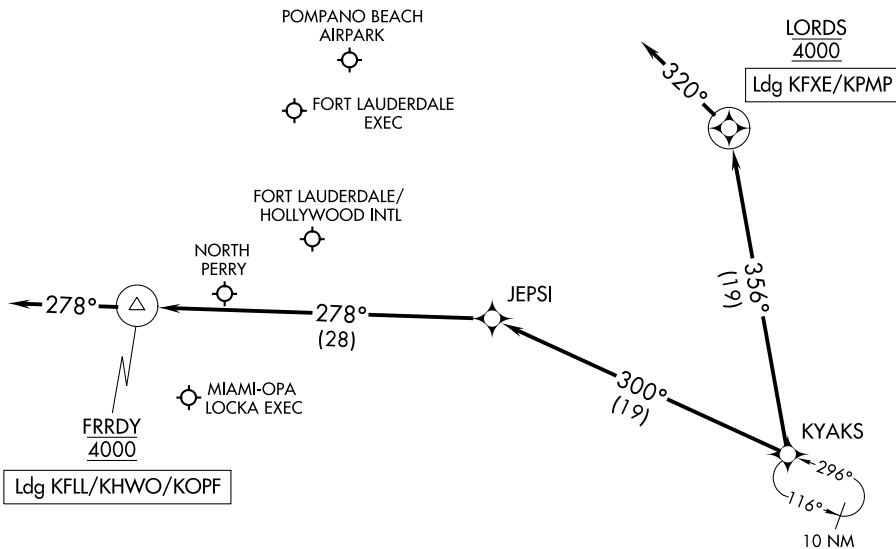
FORT LAUDERDALE, FLORIDA

KYAKS THREE ARRIVAL (RNAV) Arrival Routes

FORT LAUDERDALE, FLORIDA

RNAV 1-GPS.
RADAR required.

MIAMI APP CON
128.6 306.975
FLL D-ATIS
135.0
FXE ATIS
119.85
HWO ATIS
135.475
OPF ATIS
125.9
PMP ATIS
120.55



NOTE: Turboprop and prop aircraft only.

NOTE: Chart not to scale.

ARRIVAL ROUTE DESCRIPTION

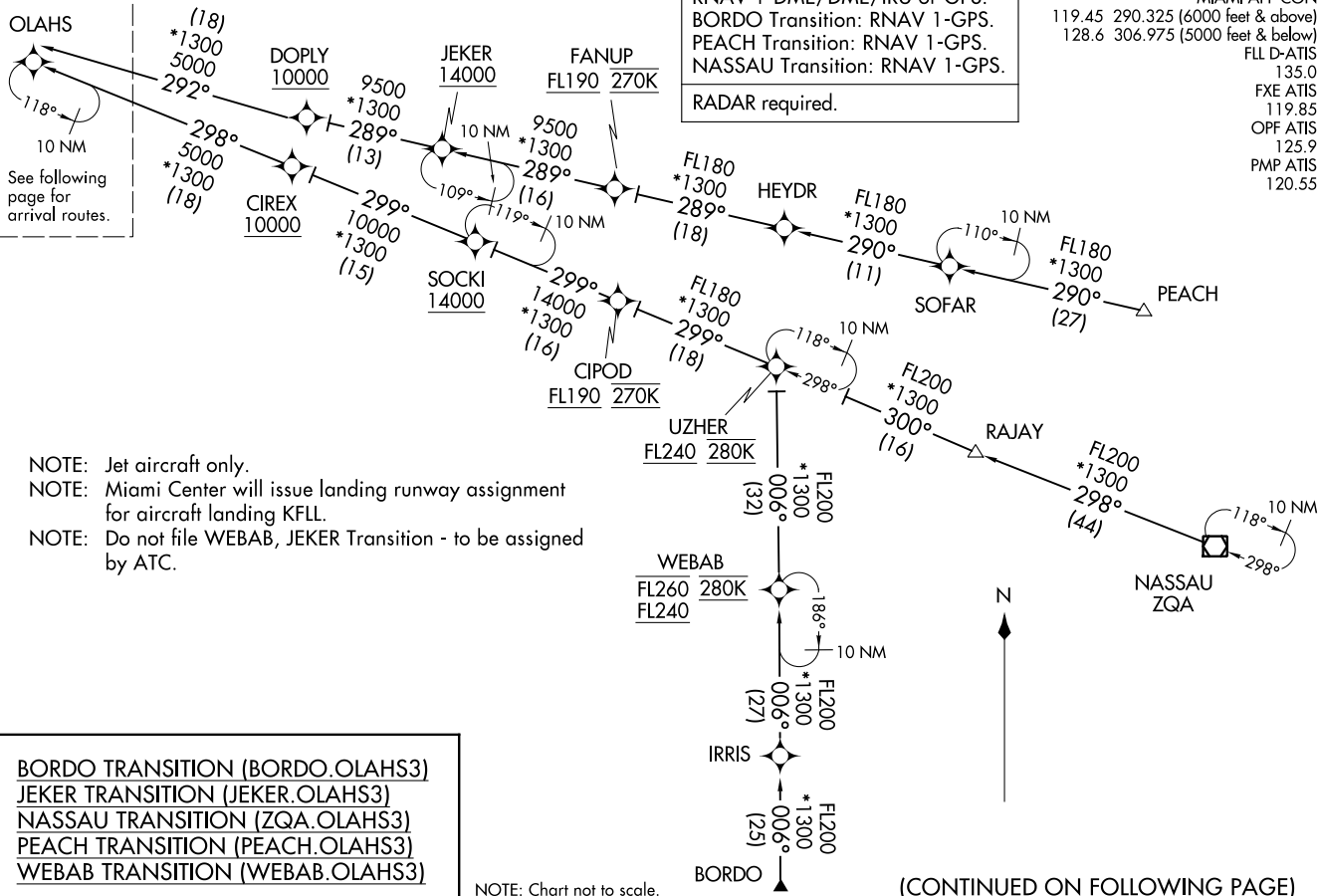
LANDING KFL/KHWO/KOPF: From KYAKS on track 300° to JEPSI, then on track 278° to cross FRRDY at 4000, then on track 278°. Expect RADAR vectors to final approach course.

LANDING KFXE/KPMP: From KYAKS on track 356° to cross LORDS at 4000, then on heading 320°. Expect RADAR vectors to final approach course.

OLAHS THREE ARRIVAL (RNAV) (OLAHS.OLAHS3) 03NOV22

OLAHS THREE ARRIVAL (RNAV) Transition Routes

FORT LAUDERDALE, FLORIDA



OLAHS THREE ARRIVAL (RNAV) 22207

AL-7/44 (FAA)

FORT LAUDERDALE, FLORIDA

(CONTINUED ON FOLLOWING PAGE)

RNAV 1-DME/DME/IRU or GPS.
RADAR required.

(OLAH3.OLAHS3) 03NOV22

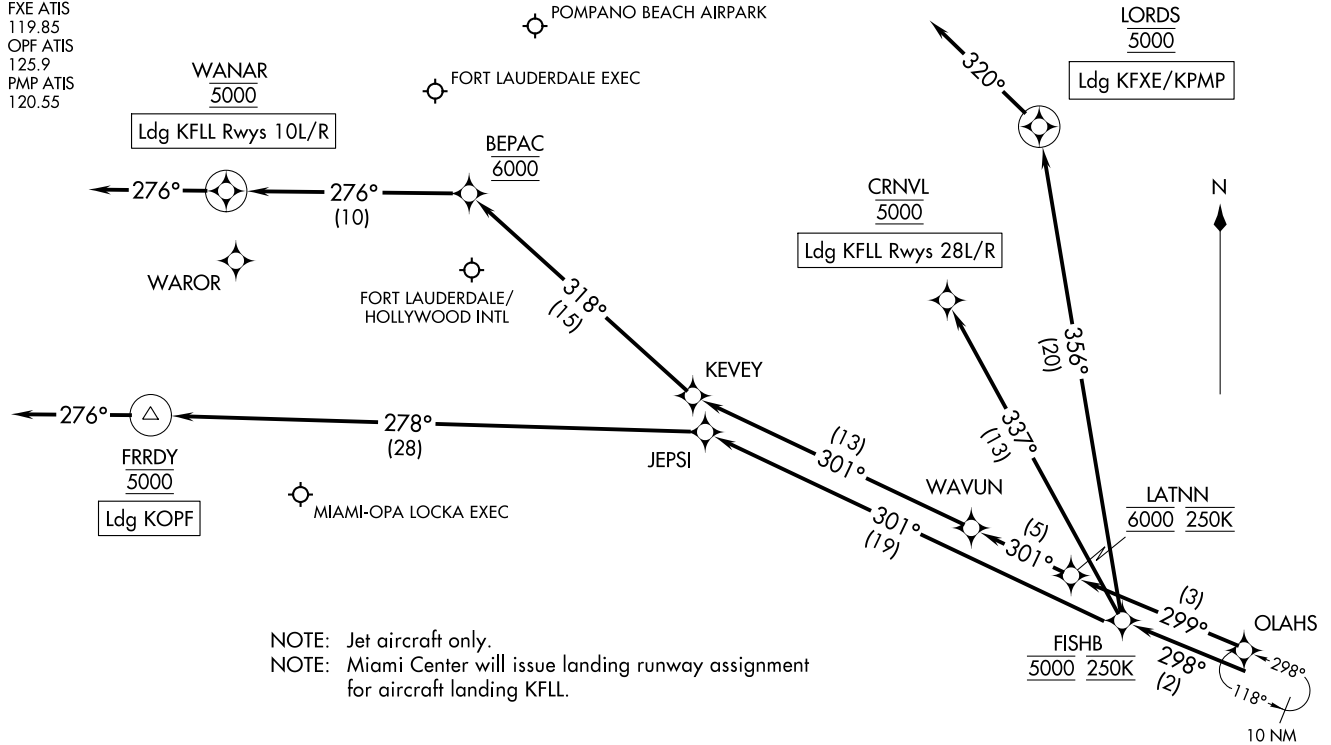
(OLAH3.OLAHS3) 22307

AL-7/44 (FAA)

Arrival Routes

Arrival Routes

MIAMI APP CON
119.45 290.325 (6000 feet & above)
128.6 306.975 (5000 feet & below)
FLL D-ATIS
135.0
FXE ATIS
119.85
OPF ATIS
125.9
PMP ATIS
120.55



NOTE: Jet aircraft only.
NOTE: Miami Center will issue landing runway assignment for aircraft landing KFFL.

NOTE: Chart not to scale.

(NARRATIVE ON FOLLOWING PAGE)

Arrival Routes

FORT LAUDERDALE, FLORIDA

ARRIVAL ROUTE DESCRIPTION

LANDING KFL RUNWAYS 10L/R: From OLAHS on track 299° to cross LATNN at 6000 and at 250K, then on track 301° to WAVUN, then on track 301° to KEVEY, then on track 318° to cross BEPAC at 6000, then on track 276° to cross WANAR at 5000, then on track 276°. Expect RADAR vectors to final approach course.

LANDING KFL RUNWAYS 28L/R: From OLAHS on track 298° to cross FISHB at 5000 and at 250K, then on track 337° to cross CRNVL at 5000.

LANDING KFXE/KPMP: From OLAHS on track 298° to cross FISHB at 5000 and at 250K, then on track 356° to cross LORDS at 5000, then on heading 320°. Expect RADAR vectors to final approach course.

LANDING KOPF: From OLAHS on track 298° to cross FISHB at 5000 and at 250K, then on track 301° to JEPSI, then on track 278° to cross FRRDY at 5000, then on heading 276°. Expect RADAR vectors to final approach course.

SE-3, 22 FEB 2024 to 21 MAR 2024

SE-3, 22 FEB 2024 to 21 MAR 2024

TARPN THREE ARRIVAL (RNAV)

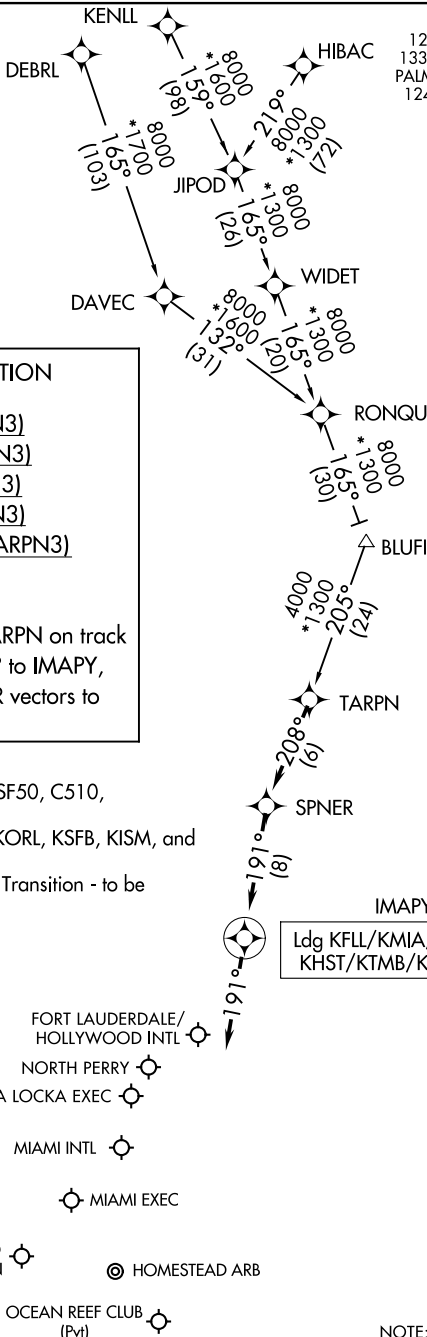
AL-744 (FAA)

FORT LAUDERDALE, FLORIDA

RNAV 1 - DME/DME/IRU or GPS.

RADAR required.

- MIAMI APP CON 126.05 251.1 (9000)
- 133.775 371.9 (7000)
- PALM BEACH APP CON 124.6 317.4 (12000)
- FLL D-ATIS 135.0
- HWO ATIS 135.475
- KHST ATIS * 132.275 269.9
- MIA D-ATIS 119.15
- OPF ATIS 125.9
- TMB ATIS 124.0
- X51 AWOS-3 118.375



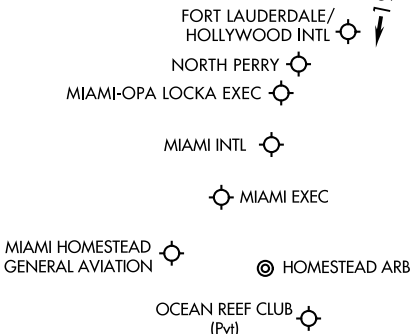
ARRIVAL ROUTE DESCRIPTION

- DEBRL TRANSITION (DEBRL.TARPN3)
- HIBAC TRANSITION (HIBAC.TARPN3)
- JIPOD TRANSITION (JIPOD.TARPN3)
- KENLL TRANSITION (KENLL.TARPN3)
- RONQU TRANSITION (RONQU.TARPN3)

LANDING ALL AIRPORTS: From TARP3 on track 208° to SPNER, then on track 191° to IMAPY, then on track 191°. Expect RADAR vectors to final approach course.

- NOTE: Turboprop and EA50, E50P, SF50, C510, and C525 aircraft only.
- NOTE: JIPOD Transition for KMCO, KORL, KSFB, KISM, and KLEE departures only.
- NOTE: Do not file DEBRL or RONQU Transition - to be assigned by ATC.

Ldg KFLL/KMIA/O7FA/X51/KHST/KTMB/KHWO/KOPF



NOTE: Chart not to scale.

TARPN THREE ARRIVAL (RNAV)

FORT LAUDERDALE, FLORIDA

SE-3, 22 FEB 2024 to 21 MAR 2024

SE-3, 22 FEB 2024 to 21 MAR 2024