

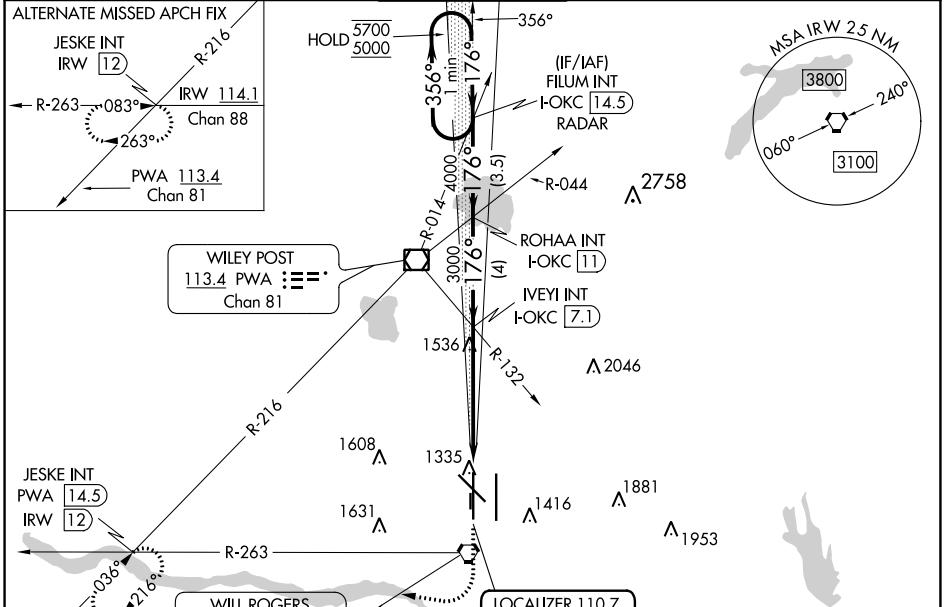
LOC/DME I-OKC 110.7 Chan 44	APP CRS 176°	Rwy Idg TDZE Apt Elev	9800 1282 1296
--	------------------------	-----------------------------	---

ILS RWY 17R (SA CAT II)

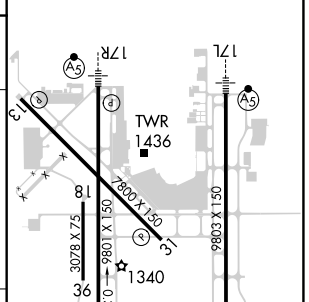
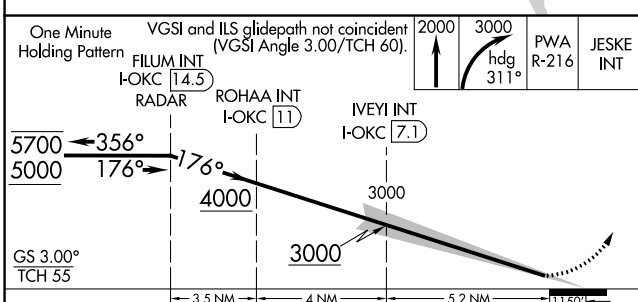
WILL ROGERS WORLD (OKC)

RADAR required for procedure entry.		MALSR 	MISSED APPROACH: Climb to 2000 then climbing right turn to 3000 on heading 311° and on PWA VOR/DME R-216 to JESKE INT/PWA 14.5 DME and hold.	
ASR Simultaneous approach authorized. Reduced lighting: requires specific OPSPEC, MSPEC, or LOA approval and use of autoland or HUD to touchdown.				

D-ATIS 125.85	OKE CITY APP CON 124.6 266.8	ROGERS TOWER 119.35 269.45	GND CON 121.9 348.6	CLNC DEL 124.35
-------------------------	--	---	-------------------------------	---------------------------



ELEV 1296	D TDZE 1282
-----------	--------------------



CATEGORY	A	B	C	D
5-ILS 17R	RA 102/12 100 DA 1382			

SA CATEGORY II ILS - SPECIAL AIRCREW & AIRCRAFT CERTIFICATION REQUIRED

TDZ/CL Rwy 35R
MIRL Rwy 13-31
REIL Rwy 13 and 31
HIRL Rwy 17L-35R and 17R-35L

SC-1, 22 FEB 2024 to 21 MAR 2024

SC-1, 22 FEB 2024 to 21 MAR 2024

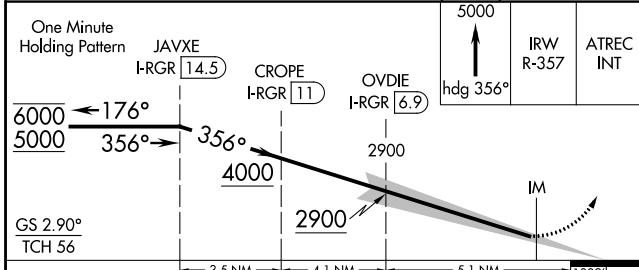
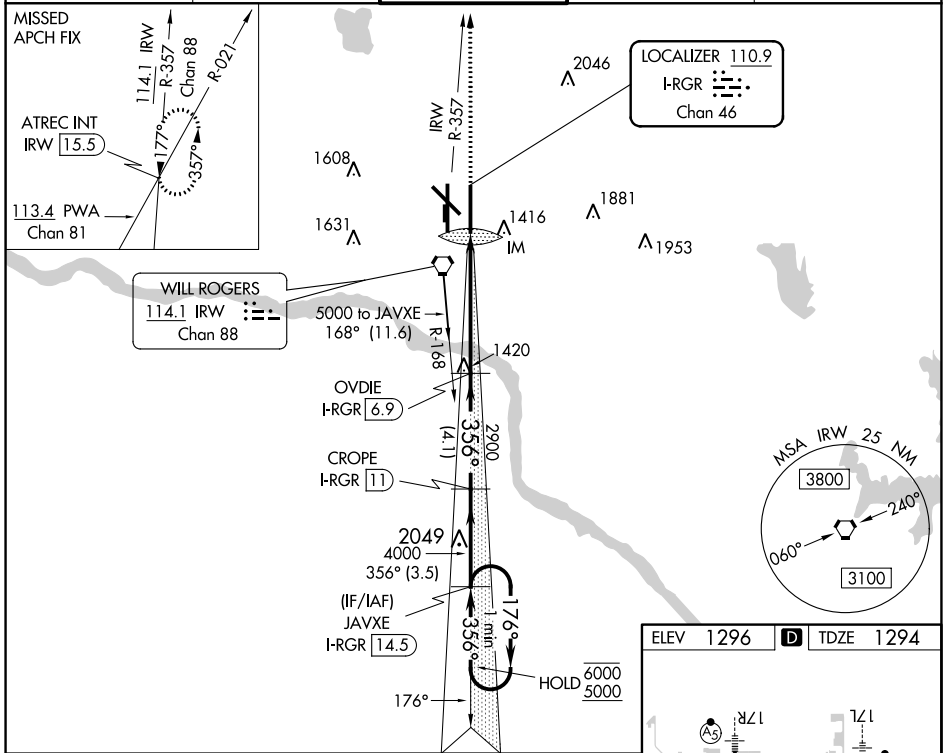
LOC/DME I-RGR 110.9 Chan 46	APP CRS 356°	Rwy Idg 9802 TDZE 1294 Apt Elev 1296
---	------------------------	---

ILS RWY 35R (CAT II)

WILL ROGERS WORLD (OKC)

DME required. ASR Simultaneous approach authorized.		ALSIF-2 	MISSED APPROACH: Climb to 5000 on heading 356° and on IRW VORTAC R-357 to ATREC INT/IRW 1.5.5 DME and hold, continue climb-in-hold to 5000.
--	--	-------------	---

D-ATIS 125.85	OKE CITY APP CON 124.6 266.8	ROGERS TOWER 119.35 269.45	GND CON 121.9 348.6	CLNC DEL 124.35
-------------------------	--	---	-------------------------------	---------------------------



CATEGORY	A	B	C	D
5-ILS 35R	RA 121/12 100 DA 1394			
CATEGORY II ILS - SPECIAL AIRCREW & AIRCRAFT CERTIFICATION REQUIRED				

REIL Rws 13 and 31
TDZ/CL Rwy 35R
MIRL Rwy 13-31
HIRL Rws 17L-35R and 17R-35L

SC-1, 22 FEB 2024 to 21 MAR 2024

SC-1, 22 FEB 2024 to 21 MAR 2024

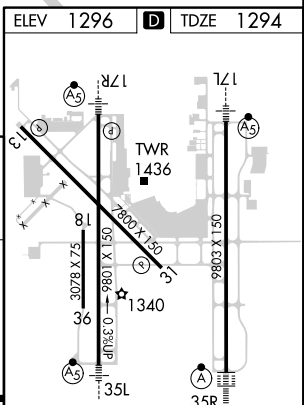
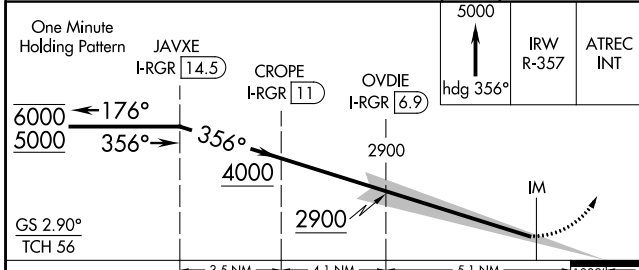
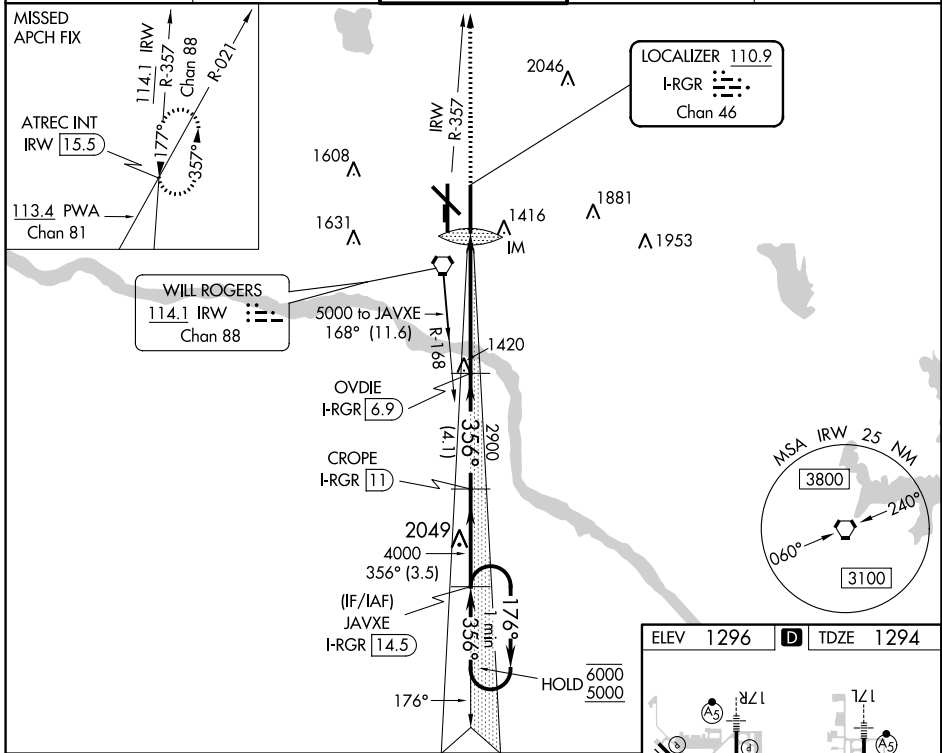
LOC/DME I-RGR 110.9 Chan 46	APP CRS 356°	Rwy Idg 9802 TDZE 1294 Apt Elev 1296
---	------------------------	---

ILS RWY 35R (SA CAT I)

WILL ROGERS WORLD (OKC)

DME required.		ALSF-2 	MISSED APPROACH: Climb to 5000 on heading 356° and on IRW VORTAC R-357 to ATREC INT/IRW 15.5 DME and hold, continue climb-in-hold to 5000.	
ASR Simultaneous approach authorized. Requires specific OPSPEC, MSPEC, or LOA approval and use of HUD to DH.				

D-ATIS 125.85	OKE CITY APP CON 124.6 266.8	ROGERS TOWER 119.35 269.45	GND CON 121.9 348.6	CLNC DEL 124.35
-------------------------	--	--------------------------------------	-------------------------------	---------------------------



CATEGORY	A	B	C	D
S-ILS 35R	RA 178/14		150 DA 1444	
SA CATEGORY I ILS - SPECIAL AIRCREW & AIRCRAFT CERTIFICATION REQUIRED				
REIL Rwy 13 and 31 TDZ/CL Rwy 35R MIRL Rwy 13-31 HIRL Rwy 17L-35R and 17R-35L				

SC-1, 22 FEB 2024 to 21 MAR 2024

SC-1, 22 FEB 2024 to 21 MAR 2024

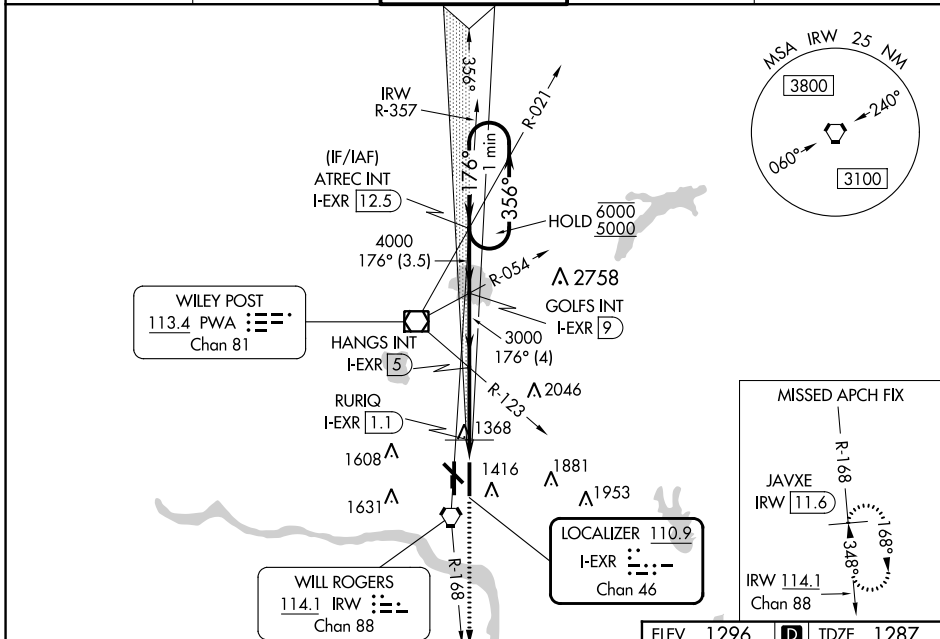
LOC/DME I-EXR 110.9 Chan 46	APP CRS 176°	Rwy Idg TDZE 1287 Apt Elev 1296
--	------------------------	---

ILS or LOC RWY 17L

WILL ROGERS WORLD (OKC)

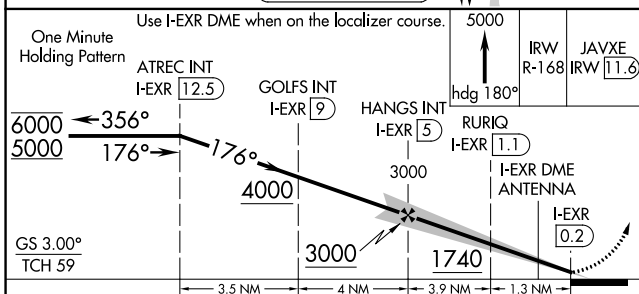
DME required. RADAR required for procedure entry. Simultaneous approach authorized. Inop table does not apply to S-ILS 17L. For inop ALS, increase S-LOC 17L visibilities Cats A and B to RVR 5500, and Cat E to 1 3/8 SM. RURIQ Fix Minimums: For inop ALS, increase S-LOC 17L visibilities Cats A and B to RVR 5500, and Cats C, D, and E to RVR 6000. Autopilot coupled approach NA below 1480.		MALSR 	MISSED APPROACH: Climb to 5000 on heading 180° and on IRW VORTAC R-168 to JAVXE/IRW 11.6 DME and hold, continue climb-in-hold to 5000.
---	--	-----------	--

D-ATIS 125.85	OKE CITY APP CON 124.6 266.8	ROGERS TOWER 119.35 269.45	GND CON 121.9 348.6	CLNC DEL 124.35
-------------------------	--	---	-------------------------------	---------------------------

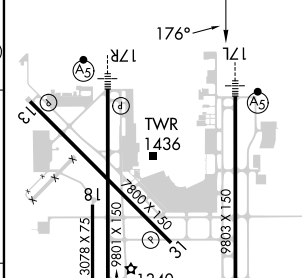


SC-1, 22 FEB 2024 to 21 MAR 2024

SC-1, 22 FEB 2024 to 21 MAR 2024



ELEV 1296	D TDZE 1287
-----------	--------------------



CATEGORY	A	B	C	D	E
S-ILS 17L	1487/40 200 (200-3/4)				
S-LOC 17L	1740/40	453 (500-3/4)	1740/45	453 (500-3/4)	
CIRCLING	1740-1	1760-1	1960-1 3/4	2000-2 1/4	2240-3
	444 (500-1)	464 (500-1)	664 (700-1 3/4)	704 (800-2 1/4)	944 (1000-3)
RURIQ FIX MINIMUMS					
S-LOC 17L	1680/40 393 (400-3/4)				
CIRCLING	1740-1	1760-1	1960-1 3/4	2000-2 1/4	2240-3
	444 (500-1)	464 (500-1)	664 (700-1 3/4)	704 (800-2 1/4)	944 (1000-3)

MRL Rwy 13-31
 TDZ/CL Rwy 35R
 HIRL Rws 17L-35R and 17R-35L
 REL Rws 13 and 31

LOC/DME I-OKC 110.7 Chan 44	APP CRS 176°	Rwy Ldg 9800
		TDZE 1282
		Apt Elev 1296

ILS or LOC RWY 17R

WILL ROGERS WORLD (OKC)

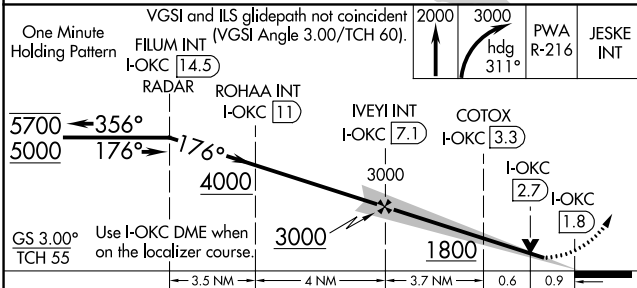
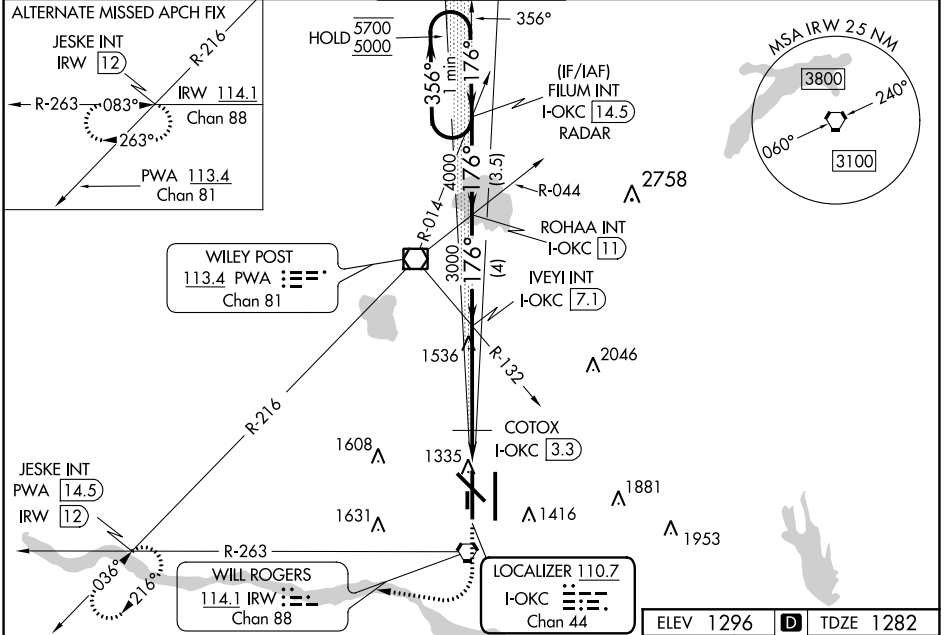
RADAR required for procedure entry.

Simultaneous approach authorized. For inop ALS, increase S-ILS 17R Cat E visibility to RVR 4000; increase S-LOC 17R Cats C, D and E visibilities to 1 $\frac{3}{8}$ SM.
* RVR 1800 authorized with use of FD or AP or HUD to DA.

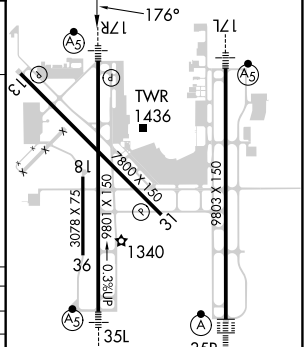
MALSR

MISSED APPROACH: Climb to 2000 then climbing right turn to 3000 on heading 311° and on PWA VOR/DME R-216 to JESKE INT/PWA 14.5 DME and hold.

D-ATIS 125.85	OKE CITY APP CON 124.6 266.8	ROGERS TOWER 119.35 269.45	GND CON 121.9 348.6	CLNC DEL 124.35
-------------------------	--	---	-------------------------------	---------------------------



ELEV 1296	D	TDZE 1282
-----------	----------	-----------



CATEGORY	A	B	C	D	E
S-ILS 17R*	1482/24		200 (200- $\frac{1}{2}$)		
S-LOC 17R	1800/24	518 (600- $\frac{1}{2}$)	1800/55		518 (600-1)
C CIRCLING	1800-1	504 (600-1)	1960-1 $\frac{3}{4}$ 664 (700-1 $\frac{3}{4}$)	2000-2 $\frac{1}{4}$ 704 (800-2 $\frac{1}{4}$)	2240-3 944 (1000-3)
COTOX FIX MINIMUMS					
S-LOC 17R	1620/24	338 (400- $\frac{1}{2}$)	1620/26	338 (400- $\frac{1}{2}$)	
C CIRCLING	1740-1 444 (500-1)	1760-1 464 (500-1)	1960-1 $\frac{3}{4}$ 664 (700-1 $\frac{3}{4}$)	2000-2 $\frac{1}{4}$ 704 (800-2 $\frac{1}{4}$)	2240-3 944 (1000-3)

TDZ/CL Rwy 35R	176°
MIRL Rwy 13-31	171°
REIL Rwys 13 and 31	
HIRL Rwys 17L-35R and 17R-35L	
FAF to MAP 5.2 NM	
Knots	60 90 120 150 180
Min:Sec	5:12 3:28 2:36 2:05 1:44


LOC/DME I-LIK 110.7 Chan 44	APP CRS 356°	Rwy Idg TDZE Apt Elev 9800 1276 1296
---	------------------------	--

ILS or LOC RWY 35L

WILL ROGERS WORLD (OKC)

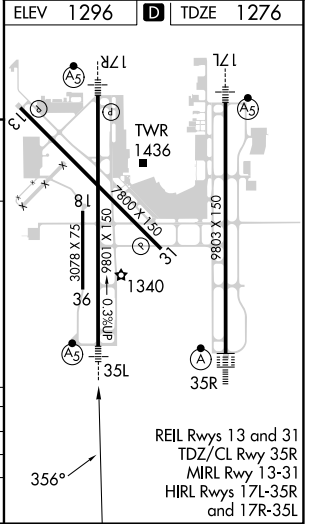
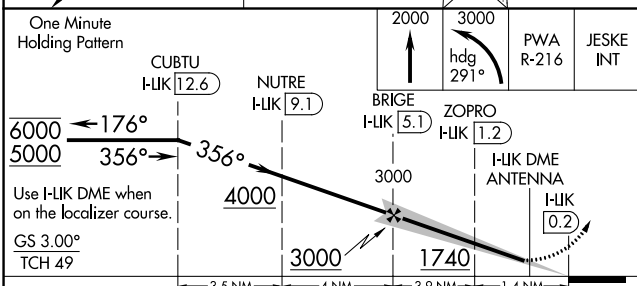
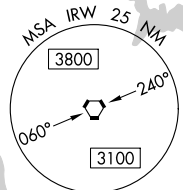
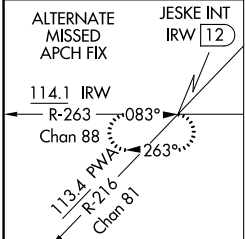
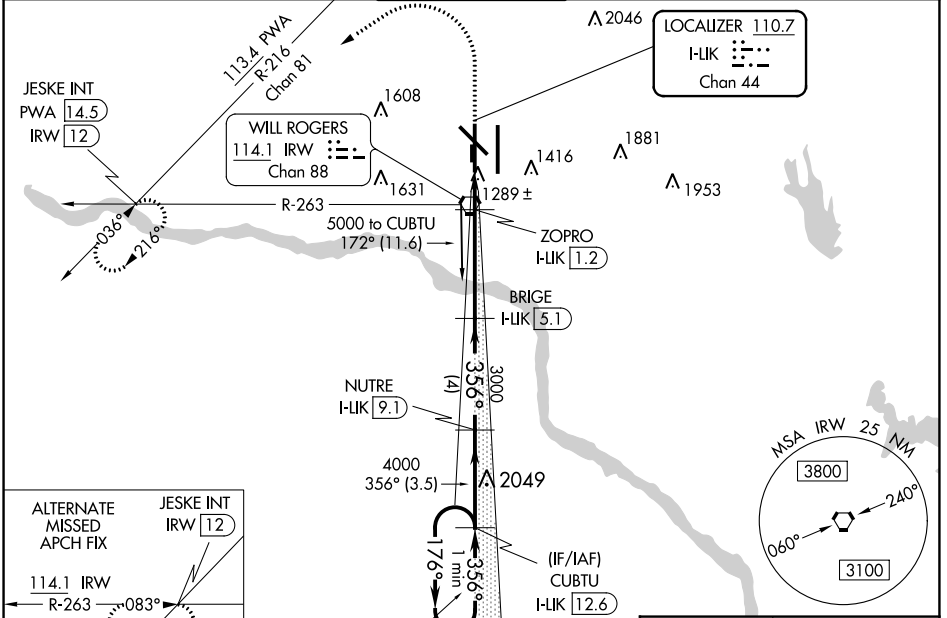
DME required.

Simultaneous approach authorized. For inop ALS, increase S-ILS 35L Cat E visibility to RVR 4000 and S-LOC 35L Cats C, D, and E visibility to RVR 5500.
*RVR 1800 authorized with use of FD or AP or HUD to DA.

MALSR 

MISSED APPROACH: Climb to 2000 then climbing left turn to 3000 on heading 291° and on PWA VOR/DME R-216 to JESKE INT/PWA 14.5 DME and hold.

D-ATIS 125.85	OKE CITY APP CON 124.6 266.8	ROGERS TOWER 119.35 269.45	GND CON 121.9 348.6	CLNC DEL 124.35
-------------------------	--	---	-------------------------------	---------------------------



CATEGORY	A	B	C	D	E
S-ILS 35L*	1476/24 200 (200-½)				
S-LOC 35L	1640/24	364 (400-½)	1640/35		364 (400-¾)
CIRCLING	1740-1 444 (500-1)	1760-1 464 (500-1)	1960-1¾ 664 (700-1¾)	2000-2¼ 704 (800-2¼)	2240-3 944 (1000-3)

SC-1, 22 FEB 2024 to 21 MAR 2024

SC-1, 22 FEB 2024 to 21 MAR 2024

REIL Rwy 13 and 31
TDZ/CL Rwy 35R
MIRL Rwy 13-31
HIRL Rwy 17L-35R
and 17R-35L

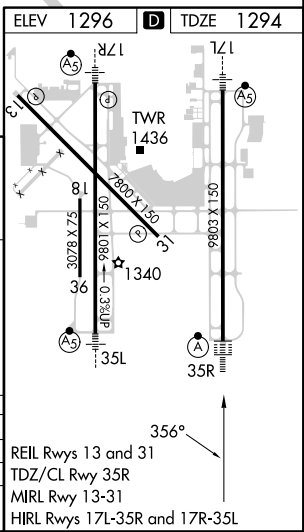
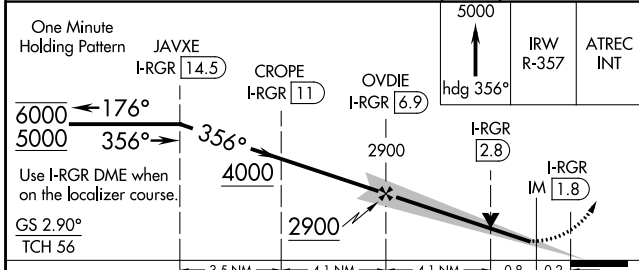
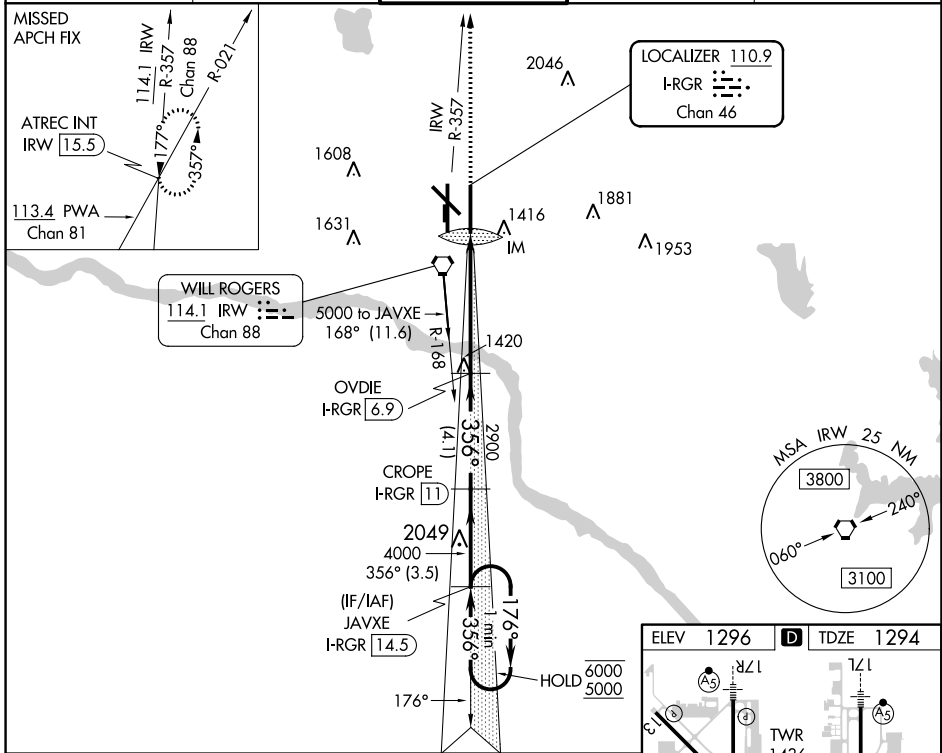
LOC/DME I-RGR 110.9 Chan 46	APP CRS 356°	Rwy Idg 9802 TDZE 1294 Apt Elev 1296
--	------------------------	---

ILS or LOC RWY 35R

WILL ROGERS WORLD (OKC)

DME required.	ALSIF-2	MISSED APPROACH: Climb to 5000 on heading 356° and on IRW VORTAC R-357 to ATREC INT/IRW 1.5.5 DME and hold, continue climb-in-hold to 5000.
<p>Simultaneous approach authorized. For inop ALS, increase S-ILS 35R Cat E visibility to RVR 4000 and S-LOC 35R Cats C/D/E visibility to RVR 5500.</p> <p>ASR</p>		

D-ATIS 125.85	OKE CITY APP CON 124.6 266.8	ROGERS TOWER 119.35 269.45	GND CON 121.9 348.6	CLNC DEL 124.35
-------------------------	--	--------------------------------------	-------------------------------	---------------------------



CATEGORY	A	B	C	D	E
S-ILS 35R	1494/18 200 (200-½)				
S-LOC 35R	1640/24	346 (400-½)	1640/30 346 (400-¾)		
CIRCLING	1740-1 444 (500-1)	1760-1 464 (500-1)	1960-1¾ 664 (700-1¾)	2000-2¼ 704 (800-2¼)	2240-3 944 (1000-3)

SC-1, 22 FEB 2024 to 21 MAR 2024

SC-1, 22 FEB 2024 to 21 MAR 2024

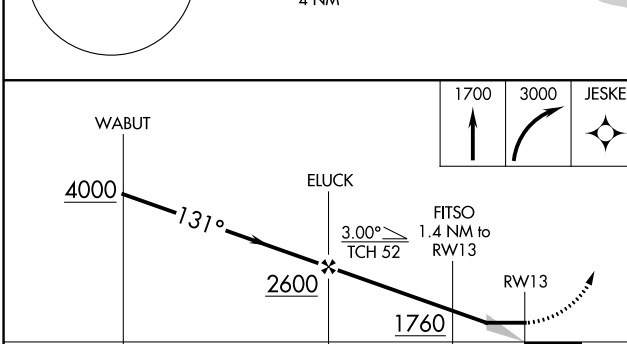
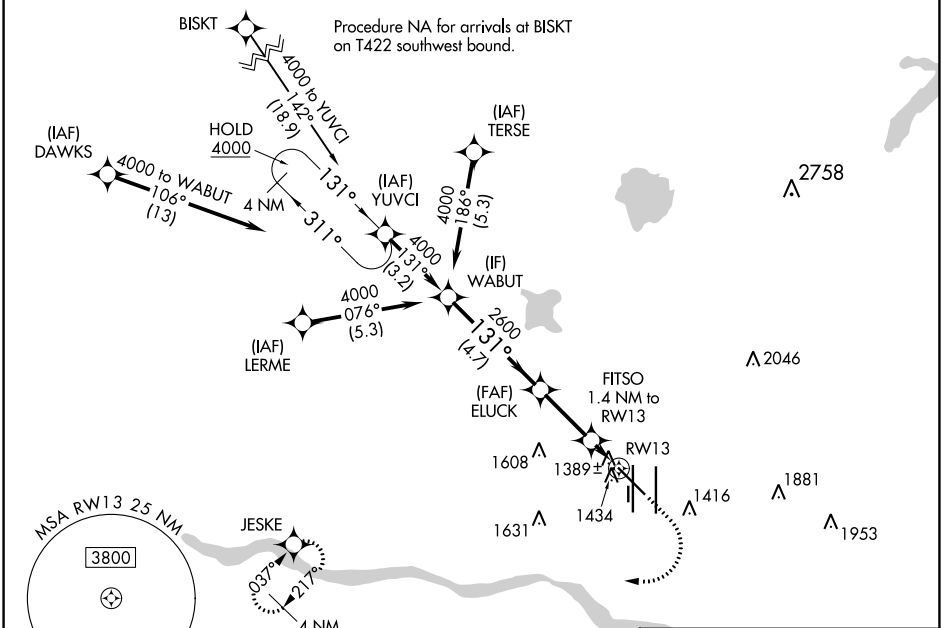
WAAS CH 45625 W13A	APP CRS 131°	Rwy Idg TDZE Apt Elev	7800 1279 1296
--	------------------------	-----------------------------	---

RNAV (GPS) RWY 13

WILL ROGERS WORLD (OKC)

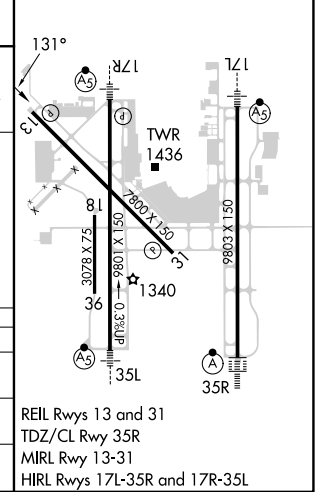
RNP APCH-GPS.		MISSED APPROACH: Climb to 1700 then climbing right turn to 3000 direct JESKE and hold.		
▼	▲			
ASR				

D-ATIS 125.85	OKE CITY APP CON 124.6 266.8	ROGERS TOWER 119.35 269.45	GND CON 121.9 348.6	CLNC DEL 124.35
-------------------------	--	--------------------------------------	-------------------------------	---------------------------



ELEV 1296	D	TDZE 1279
-----------	----------	-----------

CATEGORY	A	B	C	D
LP MDA	1640-1		361 (400-1)	
LNAV MDA	1700-1	421 (500-1)	1700-1¼	421 (500-1¼)
C CIRCLING	1740-1 444 (500-1)	1760-1 464 (500-1)	1960-1¾ 664 (700-1¾)	2000-2¼ 704 (800-2¼)



SC-1, 22 FEB 2024 to 21 MAR 2024

SC-1, 22 FEB 2024 to 21 MAR 2024

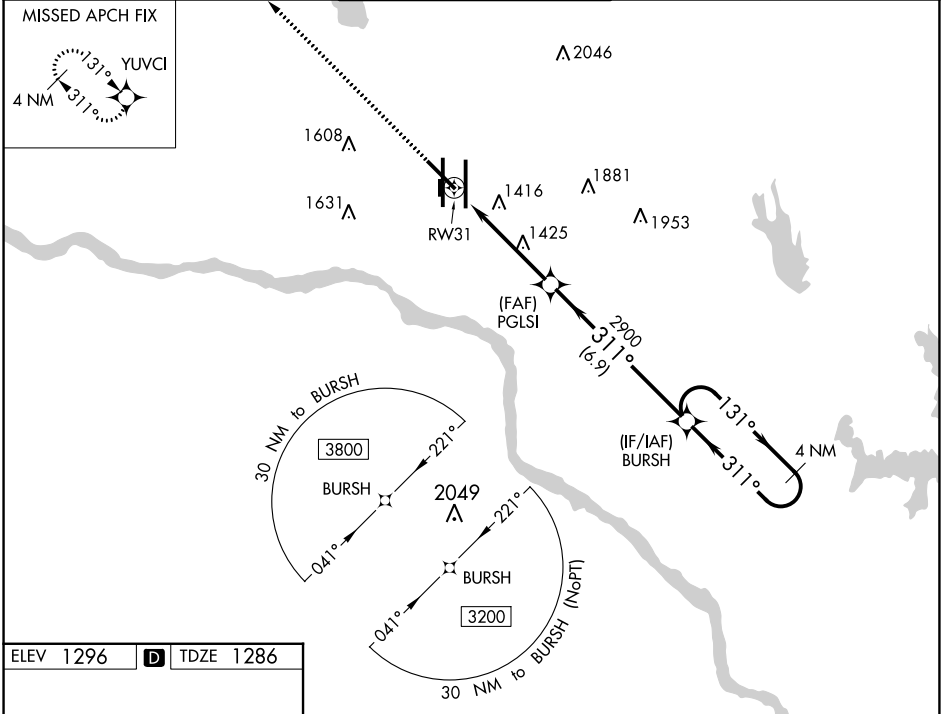
WAAS CH 50225 W31A	APP CRS 311°	Rwy Idg TDZE Apt Elev	7800 1286 1296
--	------------------------	-----------------------------	---

RNAV (GPS) RWY 31

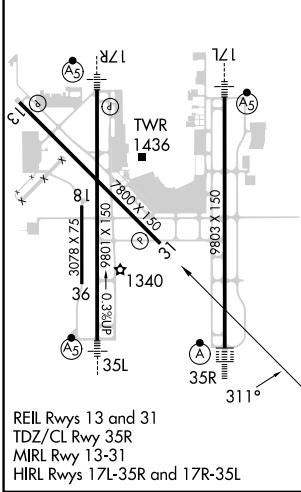
WILL ROGERS WORLD (OKC)

ASR	DME/DME RNP-0.3 NA.	MISSED APPROACH: Climb to 3600 direct YUVCI and hold.		
------------	---------------------	---	--	--

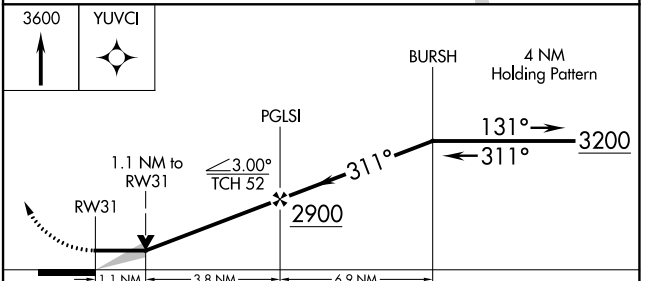
D-ATIS 125.85	OKC CITY APP CON 124.6 266.8	ROGERS TOWER 119.35 269.45	GND CON 121.9 348.6	CLNC DEL 124.35
-------------------------	--	--------------------------------------	-------------------------------	---------------------------



ELEV 1296	D	TDZE 1286
-----------	----------	-----------



REIL Rwy 13 and 31
TDZ/CL Rwy 35R
MIRL Rwy 13-31
HIRL Rwy 17L-35R and 17R-35L



CATEGORY	A	B	C	D
LP MDA	1680-1	394 (400-1)	1680-1½	394 (400-1½)
LNAV MDA	1700-1	414 (500-1)	1700-1½	414 (500-1½)
C CIRCLING	1740-1 444 (500-1)	1760-1 464 (500-1)	1960-1¾ 664 (700-1¾)	2000-2¼ 704 (800-2¼)

SC-1, 22 FEB 2024 to 21 MAR 2024


SC-1, 22 FEB 2024 to 21 MAR 2024

APP CRS	Rwy Idg	9802
176°	TDZE	1287
	Apt Elev	1296

RNAV (RNP) Z RWY 17L

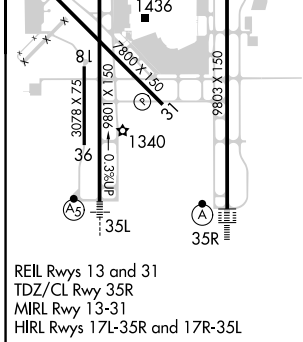
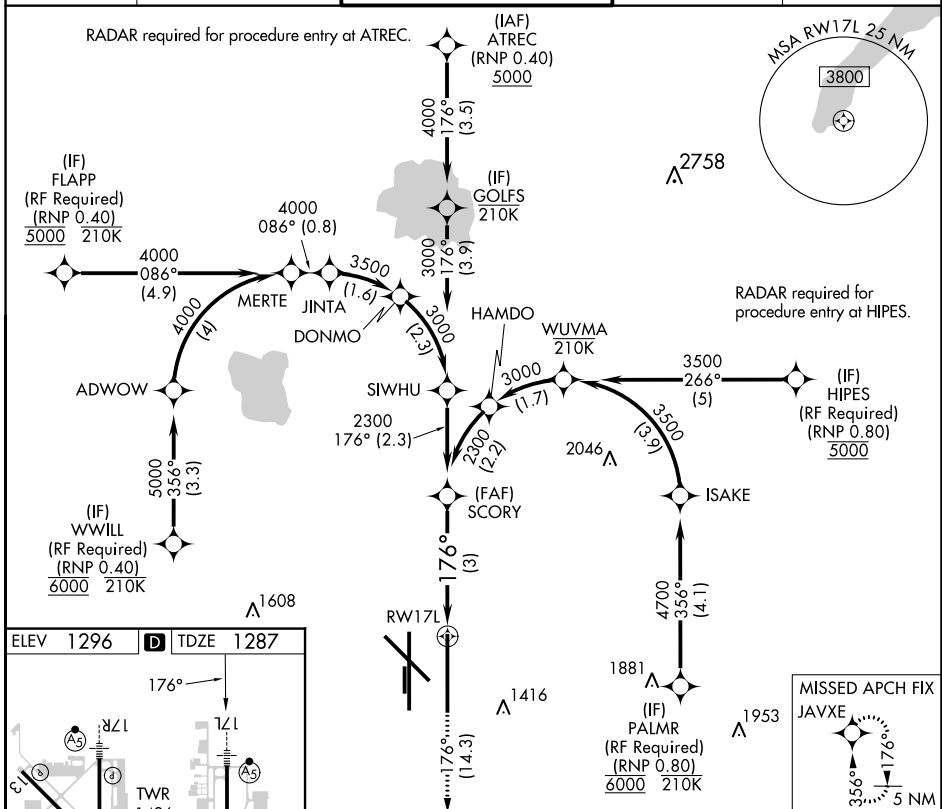
WILL ROGERS WORLD (OKC)

ASR For uncompensated Baro-VNAV systems, procedure NA below -12°C (11°F) or above 54°C (130°F). GPS required. Simultaneous approach authorized with Rwy 17R. Use of FD or AP providing RNAV track guidance required during simultaneous operations.

MALSR 

MISSED APPROACH: Climb to 5000 on track 176° to JAVXE and hold, continue climb-in-hold to 5000.

D-ATIS	OKC CITY APP CON	ROGERS TOWER	GND CON	CLNC DEL
125.85	124.6 266.8	119.35 269.45	121.9 348.6	124.35



5000

↑

tr 176°

JAVXE

See planview for multiple IF locations.

SCORY 2300

2300

176°

RW17L

3 NM

GP 3.00°

TCH 59

CATEGORY	A	B	C	D
RNP 0.11 DA		1555/24	268 (300-½)	
RNP 0.20 DA		1643/34	356 (400-¾)	
RNP 0.30 DA		1724/49	437 (500-1)	

AUTHORIZATION REQUIRED

SC-1, 22 FEB 2024 to 21 MAR 2024

SC-1, 22 FEB 2024 to 21 MAR 2024

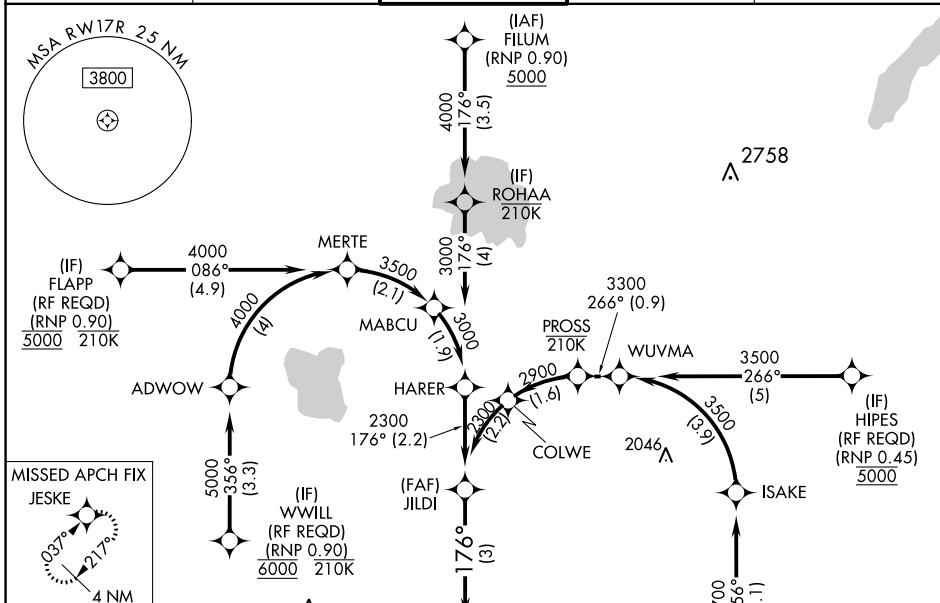
APP CRS	Rwy Idg	9800
176°	TDZE	1282
	Apt Elev	1296

RNAV (RNP) Z RWY 17R

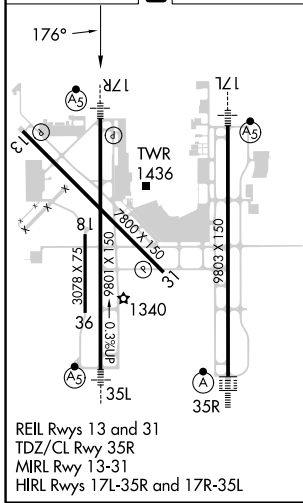
WILL ROGERS WORLD (OKC)

RNP AR APCH.	For uncompensated Baro-VNAV systems, procedure NA below -13°C or above 54°C. For inop ALS, increase RNP 0.20 all Cats visibility to RVR 4500 and RNP 0.30 all Cats visibility to RVR 6000. Simultaneous approach authorized. Use of FD or AP required during simultaneous operations.	MALS R 	MISSED APPROACH: Climb to 2000 then climbing right turn to 3000 direct JESKE and hold.

D-ATIS 125.85	OKE CITY APP CON 124.6 266.8	ROGERS TOWER 119.35 269.45	GND CON 121.9 348.6	CLNC DEL 124.35
-------------------------	--	--------------------------------------	-------------------------------	---------------------------



ELEV 1296	D	TDZE 1282
-----------	---	-----------



VGSI and RNAV glidepath not coincident (VGSI Angle 3.00/TCH 60).

2000	3000	JESKE
↑	↷	◆

GP 3.00° TCH 55

See planview for multiple IF locations.

CATEGORY	A	B	C	D
RNP 0.20 DA		1559/24	277 (300-½)	
RNP 0.30 DA		1677/35	395 (400-⅝)	

AUTHORIZATION REQUIRED

SC-1, 22 FEB 2024 to 21 MAR 2024

SC-1, 22 FEB 2024 to 21 MAR 2024


RNAV (RNP) Z RWY 35L

WILL ROGERS WORLD (OKC)

APP CRS 356°	Rwy Idg 9800
	TDZE 1276
	Apt Elev 1296

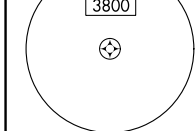
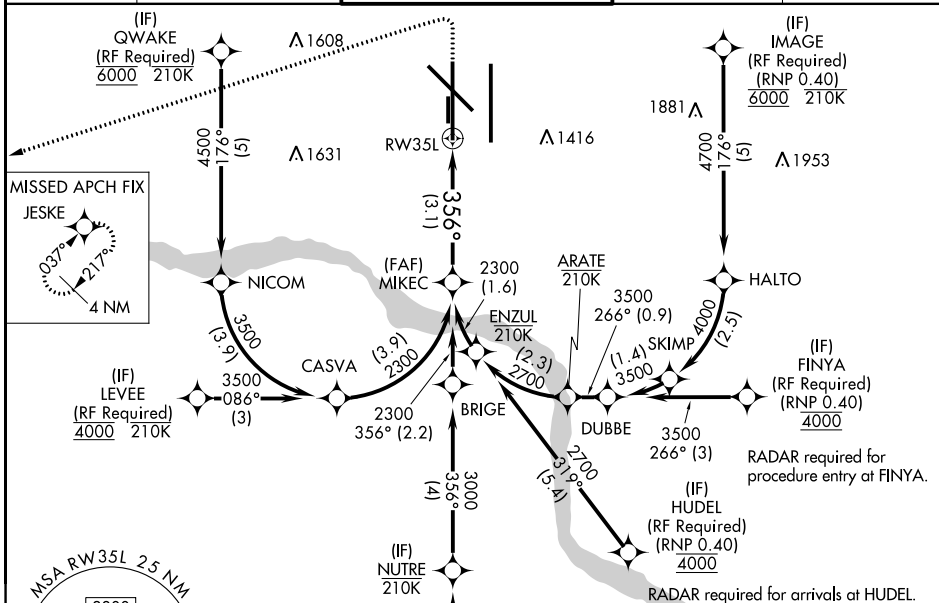
ASR For uncompensated Baro-VNAV systems, procedure NA below -12°C (11°F) or above 54°C (130°F). GPS required. Simultaneous approach authorized with Rwy 35R. Use of FD or AP providing RNAV track guidance required during simultaneous operations. For inop ALS, increase RNP 0.30 all Cats visibility to 1/4 SM.

MALSR



MISSED APPROACH: Climb to 2000 then climbing left turn to 3000 direct JESKE and hold.

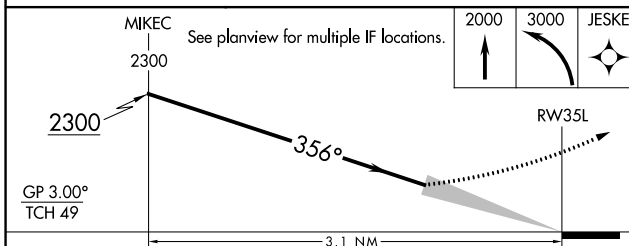
D-ATIS 125.85	OKE CITY APP CON 124.6 266.8	ROGERS TOWER 119.35 269.45	GND CON 121.9 348.6	CLNC DEL 124.35
-------------------------	--	--------------------------------------	-------------------------------	---------------------------



RADAR required for procedure entry at CUBTU.

RADAR required for arrivals at HUDEL.

RADAR required for procedure entry at FINYA.



ELEV 1296 TDZE 1276

REIL Rwy 13 and 31
TDZ/CL Rwy 35R
MIRL Rwy 13-31
HIRL Rwy 17L-35R and 17R-35L

Map view showing RWY 35L, RWY 35R, RWY 13, RWY 31, and RWY 17L-35R/17R-35L. Tower (TWR) 1436 is also shown.

CATEGORY	A	B	C	D
RNP 0.30 DA	1646/38		370 (400-3/4)	

AUTHORIZATION REQUIRED

SC-1, 22 FEB 2024 to 21 MAR 2024

SC-1, 22 FEB 2024 to 21 MAR 2024

RNAV (RNP) Z RWY 35R

WILL ROGERS WORLD (OKC)

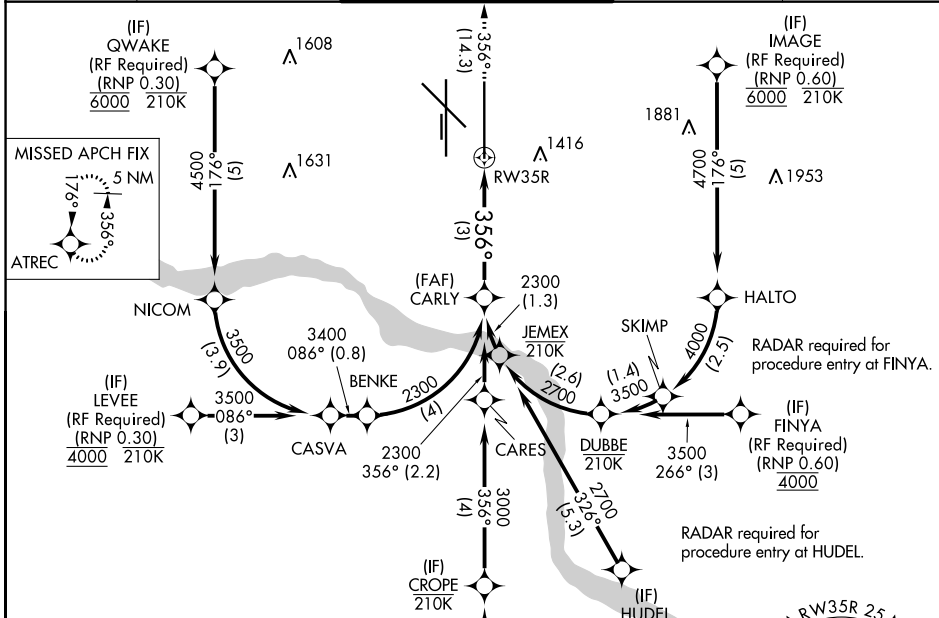
APP CRS 356°	Rwy Idg 9802
	TDZE 1294
	Apt Elev 1296

ASR For uncompensated Baro-VNAV systems, procedure NA below -12°C (11°F) or above 54°C (130°F). GPS required. Simultaneous approach authorized with Rwy 35L.
Use of FD or AP providing RNAV track guidance required during simultaneous operations.

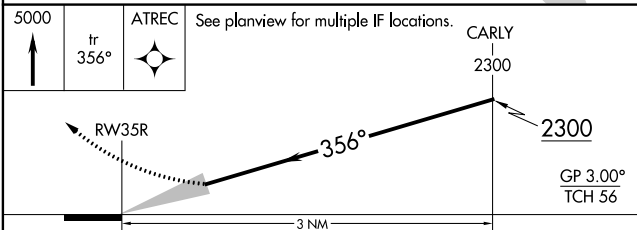
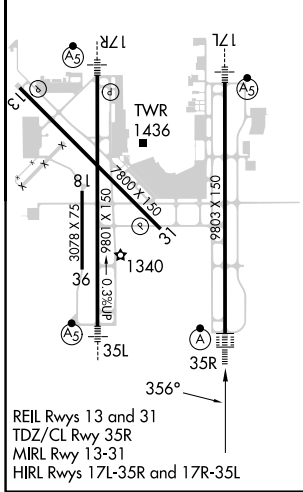
ALSF-2

MISSED APPROACH: Climb to 5000 on track 356° to ATREC and hold, continue climb-in-hold to 5000.

D-ATIS 125.85	OKC CITY APP CON 124.6 266.8	ROGERS TOWER 119.35 269.45	GND CON 121.9 348.6	CUNC DEL 124.35
-------------------------	--	--------------------------------------	-------------------------------	---------------------------



ELEV 1296	D	TDZE 1294
-----------	----------	-----------



CATEGORY	A	B	C	D
RNP 0.16 DA		1570/24	276 (300-½)	
RNP 0.30 DA		1674/39	380 (400-¾)	

AUTHORIZATION REQUIRED

RNAV (RNP) Z RWY 35R

SC-1, 22 FEB 2024 to 21 MAR 2024

WAAS CH 56503 W17B	APP CRS 176°	Rwy Idg TDZE Apt Elev	9802 1287 1296
--	------------------------	-----------------------------	---

RNAV (GPS) Y RWY 17L

WILL ROGERS WORLD (OKC)

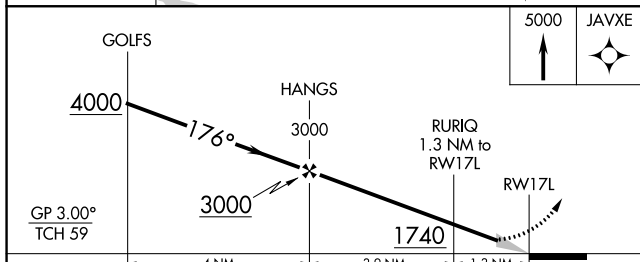
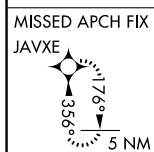
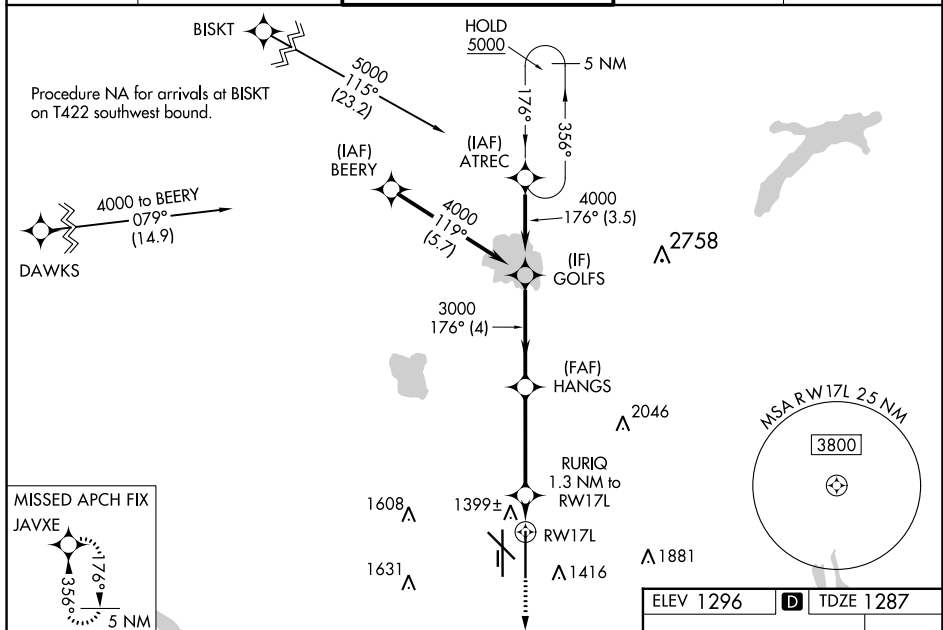
RNP APCH-GPS.

ASR Simultaneous approach authorized. LNAV procedure NA during simultaneous operations. Use of FD or AP required during simultaneous operations. For uncompensated Baro-VNAV systems, LNAV/VNAV NA below -12°C or above 54°C. For inop ALS, increase LPV Cat E visibility to RVR 4000, LNAV/VNAV Cat E visibility to RVR 4500, and LNAV all Cats visibility to RVR 5500.
* RVR 1800 authorized with use of FD or AP or HUD to DA.

MALSR

MISSED APPROACH: Climb to 5000 direct JAVXE and hold, continue climb-in-hold to 5000.

D-ATIS 125.85	OKE CITY APP CON 124.6 266.8	ROGERS TOWER 119.35 269.45	GND CON 121.9 348.6	CLNC DEL 124.35
-------------------------	--	--------------------------------------	-------------------------------	---------------------------



ELEV 1296	D TDZE 1287
-----------	--------------------

REIL Rwy 13 and 31
TDZ/CL Rwy 35R
MIRL Rwy 13-31
HIRL Rwy 17L-35R and 17R-35L

SC-1, 22 FEB 2024 to 21 MAR 2024

SC-1, 22 FEB 2024 to 21 MAR 2024

WAAS CH 50102 W17A	APP CRS 176°	Rwy Idg TDZE Apt Elev	9800 1282 1296
--	------------------------	-----------------------------	---

RNAV (GPS) Y RWY 17R

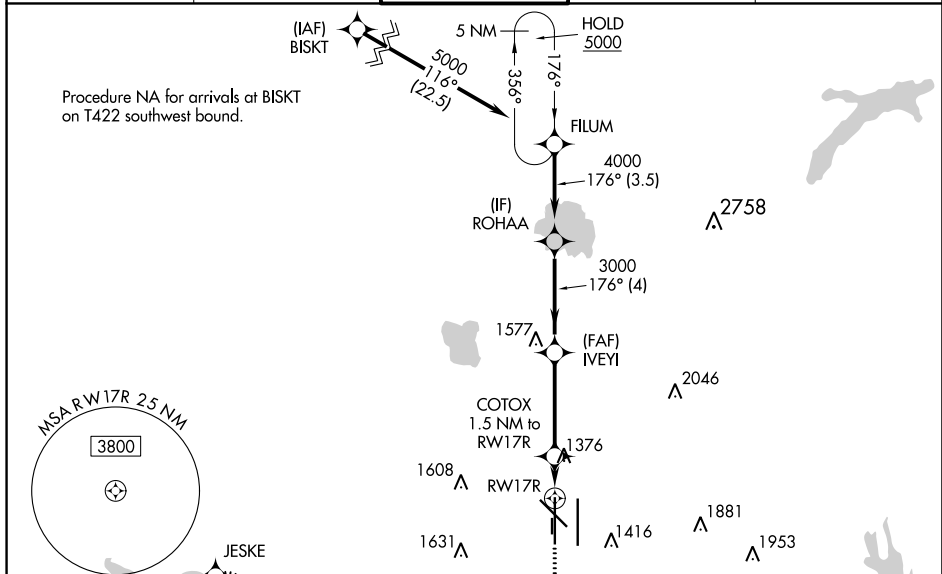
WILL ROGERS WORLD (OKC)

RNP APCH-GPS.

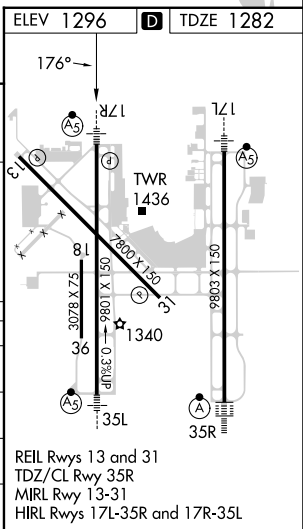
▽ Simultaneous approach authorized. LNAV procedure NA during simultaneous operations.
▲ Use of FD or AP required during simultaneous operations. For uncompensated Baro-VNAV systems, LNAV/VNAV NA below -12°C or above 54°C. For inop ALS, increase LNAV/VNAV all Cats visibility to RVR 4500, and LNAV Cats C and D visibility to RVR 5500.
ASR * RVR 1800 authorized with use of FD or AP or HUD to DA.

MALSR MISSED APPROACH: Climb to 2000 then climbing right turn to 3000 direct JESKE and hold.

D-ATIS 125.85	OKE CITY APP CON 124.6 266.8	ROGERS TOWER 119.35 269.45	GND CON 121.9 348.6	CLNC DEL 124.35
-------------------------	--	---	-------------------------------	---------------------------



GP 3.00° TCH 55	FILUM	ROHAA	IVEYI	COTOX	JESKE
	5000	4000	3000	1800	2000
VGSI and RNAV glidepath not coincident (VGSI Angle 3.00/TCH 60).					
3.5 NM 4 NM 3.7 NM 0.6 0.9 NM					
CATEGORY	A	B	C	D	
LPV DA*	1482/24		200 (200-½)		
LNAV/VNAV DA	1550/24		268 (300-½)		
LNAV MDA	1640/24		1640/30		358 (400-⅝)
CIRCLING	1740-1	1760-1	1960-1¾	2000-2¼	
	444 (500-1)	464 (500-1)	664 (700-1¾)	704 (800-2¼)	



SC-1, 22 FEB 2024 to 21 MAR 2024


SC-1, 22 FEB 2024 to 21 MAR 2024

WAAS CH 56202 W35A	APP CRS 356°	Rwy Idg 9800 TDZE 1276 Apt Elev 1296
--	------------------------	---

RNAV (GPS) Y RWY 35L

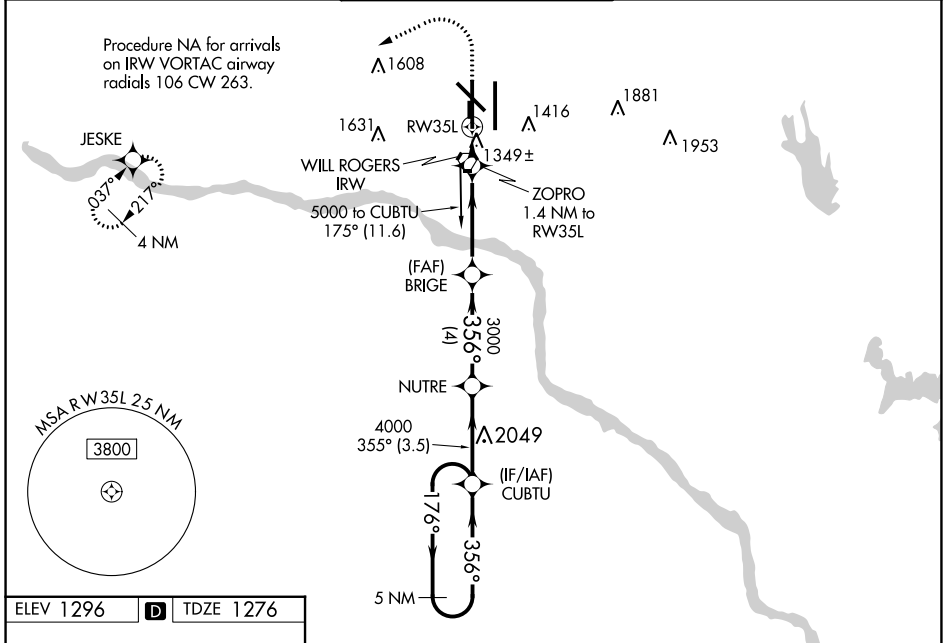
WILL ROGERS WORLD (OKC)

⚠ For uncompensated Baro-VNAV systems, LNAV/VNAV NA below -12°C (11°F) or above 54°C (130°F). DME/DME RNP-0.3 NA. For inop MALSR, increase LPV and LNAV/VNAV Cat E visibility to RVR 4000. Increase LNAV Cat A/B visibility to RVR 5500 and Cat C/D/E to RVR 5000. Simultaneous approach authorized with Rwy 35R. LNAV procedure NA during simultaneous operations. Use of FD or AP providing RNAV track guidance required during simultaneous operations. **RVR 1800 authorized with use of FD or AP or HUD to DA.

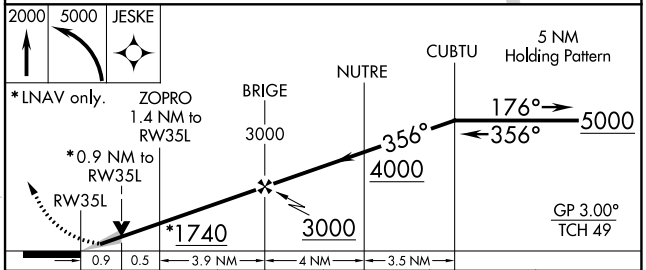
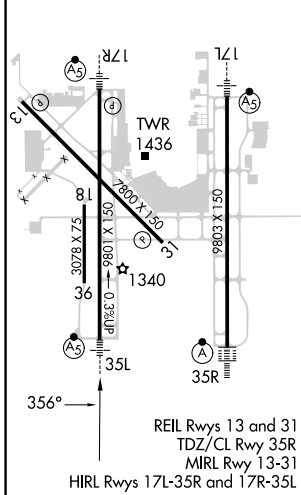
ASR MALSR 

MISSED APPROACH: Climb to 2000 then climbing left turn to 5000 direct JESKE and hold.

D-ATIS 125,85	OKE CITY APP CON 124,6 266,8	ROGERS TOWER 119,35 269,45	GND CON 121,9 348,6	CLNC DEL 124,35
-------------------------	--	--------------------------------------	-------------------------------	---------------------------



ELEV 1296	D	TDZE 1276
-----------	----------	-----------



CATEGORY	A	B	C	D	E
LPV DA**		1476/24	200 (200-½)		
LNAV/VNAV DA		1543/24	267 (300-½)		
LNAV MDA	1600/24	324 (400-½)	1600/26	324 (400-½)	
CIRCLING	1740-1 444 (500-1)	1760-1 464 (500-1)	1960-1¾ 664 (700-1¾)	2000-2¼ 704 (800-2¼)	2240-3 944 (1000-3)

SC-1, 22 FEB 2024 to 21 MAR 2024

SC-1, 22 FEB 2024 to 21 MAR 2024

WAAS CH 61218 W35B	APP CRS 356°	Rwy Idg TDZE Apt Elev	9802 1294 1296
--	------------------------	-----------------------------	---

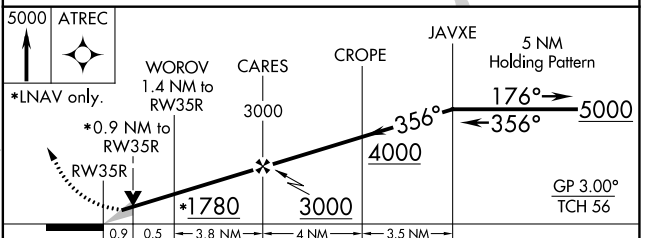
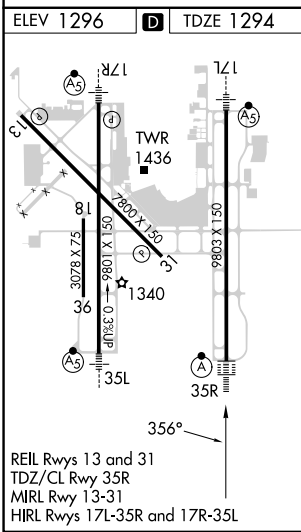
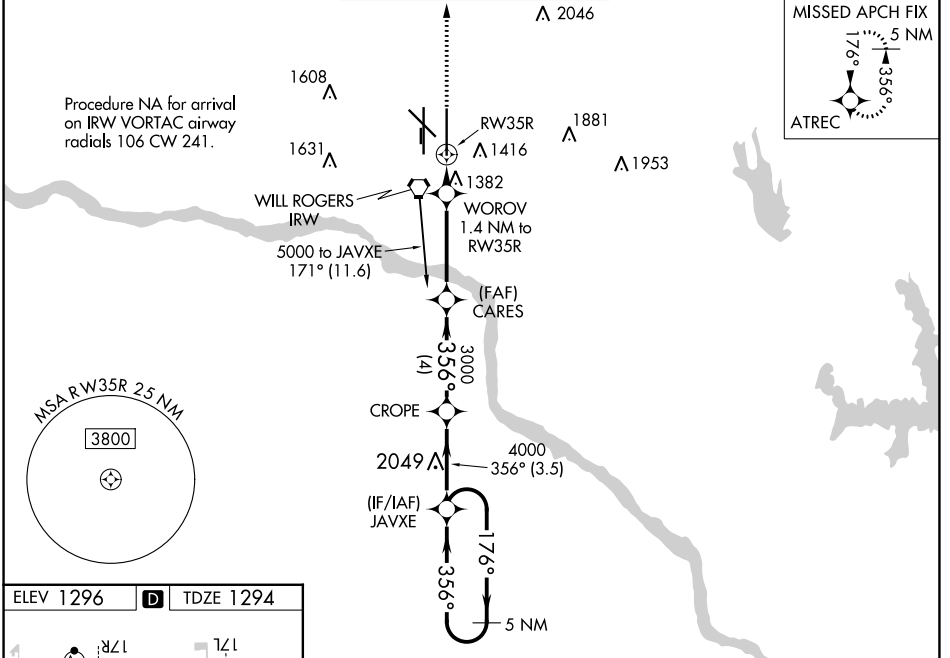
RNAV (GPS) Y RWY 35R

WILL ROGERS WORLD (OKC)

⚠ For uncompensated Baro-VNAV systems, LNAV/VNAV NA below -12°C (11°F) or above 54°C (130°F). DME/DME RNP-0.3 NA. For inop ALSF, increase LPV and LNAV/VNAV Cat E visibility to RVR 4000. Increase LNAV all Cats visibility to RVR 5500. Simultaneous approach authorized with Rwy 35L. LNAV procedure NA during simultaneous operations. Use of FD or AP providing RNAV track guidance required during simultaneous operations.

ALSF-2
MISSED APPROACH: Climb to 5000 direct ATREC and hold, continue climb-in-hold to 5000.

D-ATIS 125.85	OKE CITY APP CON 124.6 266.8	ROGERS TOWER 119.35 269.45	GND CON 121.9 348.6	CLNC DEL 124.35
-------------------------	--	--------------------------------------	-------------------------------	---------------------------



CATEGORY	A	B	C	D	E
LPV DA		1494/18	200 (200-½)		
LNAV/VNAV DA		1544/24	250 (300-½)		
LNAV MDA	1640/24	346 (400-½)	1640/40	346 (400-¾)	
CIRCLING	1740-1 444 (500-1)	1760-1 464 (500-1)	1960-1¾ 664 (700-1¾)	2000-2¼ 704 (800-2¼)	2240-3 944 (1000-3)

SC-1, 22 FEB 2024 to 21 MAR 2024

SC-1, 22 FEB 2024 to 21 MAR 2024

VOR IRW 114.1 Chan 88	APP CRS 190°	Rwy Idg TDZE 1287 Apt Elev 1296
---	------------------------	---

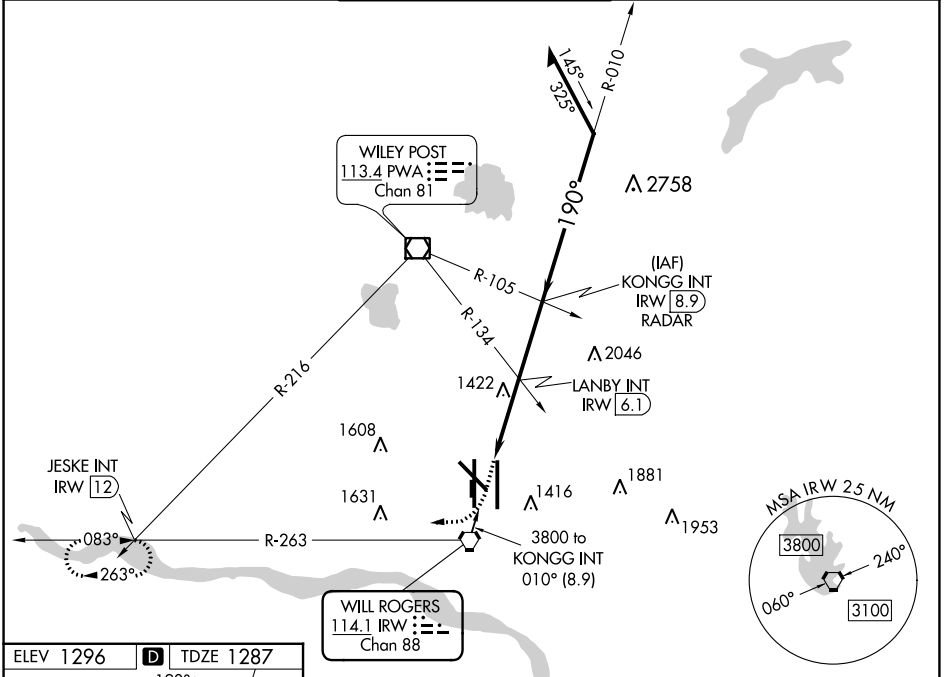
VOR RWY 17L

WILL ROGERS WORLD (OKC)

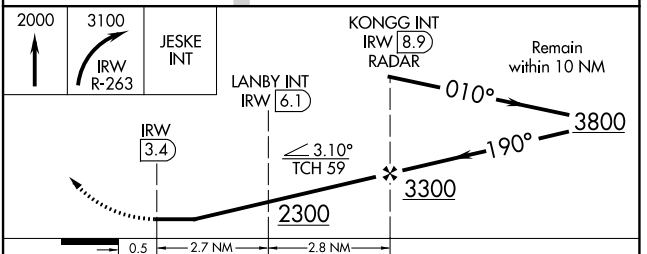
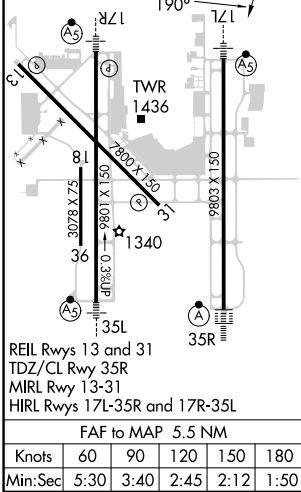
⚠ Inop table does not apply to S-17L Cats B, C, D, and E. Cat E procedure turn NA. For inop ALS, increase LANBY Fix Minimums S-17L visibilities ASR Cats A and B to RVR 5000, and Cats C, D and E to RVR 6000.

MALSR MISSED APPROACH: Climb to 2000 then climbing right turn to 3100 on IRW VORTAC R-263 to JESKE INT/12 IRW DME and hold.

D-ATIS 125.85	OKE CITY APP CON 124.6 266.8	ROGERS TOWER 119.35 269.45	GND CON 121.9 348.6	CLNC DEL 124.35
-------------------------	--	--------------------------------------	-------------------------------	---------------------------



ELEV 1296	D TDZE 1287
-----------	--------------------



CATEGORY	A	B	C	D	E
S-17L	2300/40 1013 (1100-3/4)	2300-1 1013 (1100-1)	2300-2 1/2	1013 (1100-2 1/2)	
C CIRCLING	2300-1 1/4 1004 (1100-1 1/4)	2300-1 1/2 1004 (1100-1 1/2)	2300-3	1004 (1100-3)	
LANBY FIX MINIMUMS					
S-17L	1680/24	393 (400-1/2)	1680/40 393 (400-3/4)	1680/50 393 (400-1)	1680-1 1/2 393 (400-1 1/2)
C CIRCLING	1760-1	464 (500-1)	1960-1 3/4 664 (700-1 1/4)	2000-2 1/4 704 (800-2 1/4)	2240-3 944 (1000-3)

SC-1, 22 FEB 2024 to 21 MAR 2024

SC-1, 22 FEB 2024 to 21 MAR 2024