

LOC I-MWH 109.5	APP CRS 324°	Rwy Idg 13492
		TDZE 1167
		Apt Elev 1189

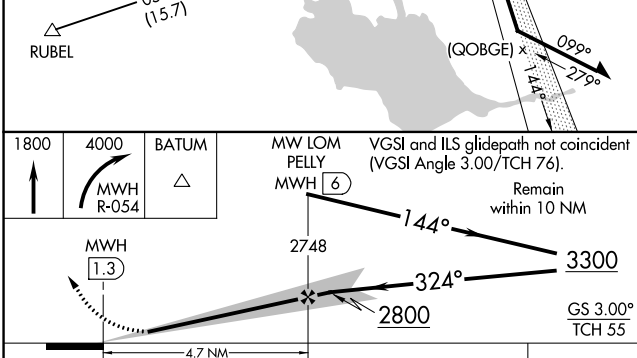
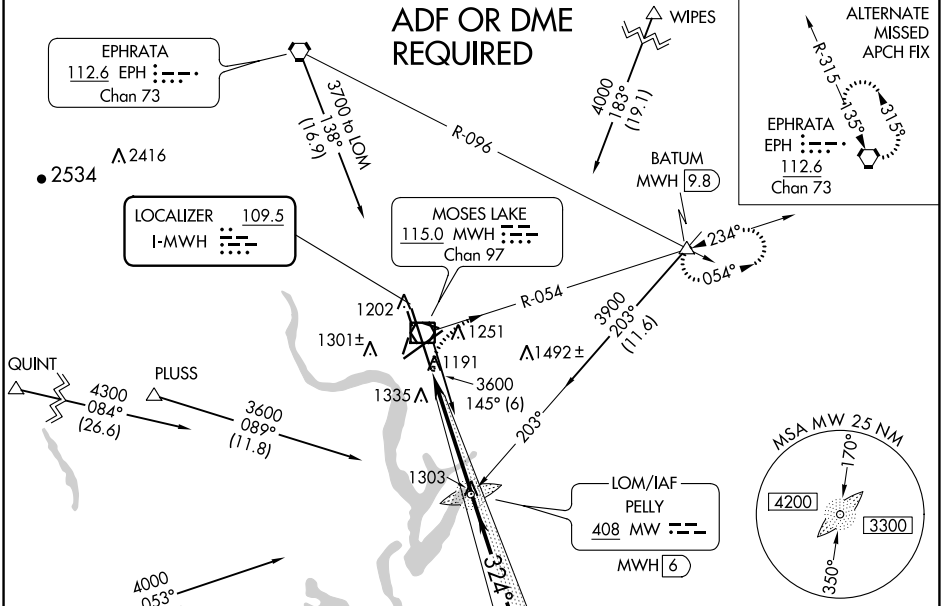
ILS or LOC RWY 32R

GRANT COUNTY INTL (MWH)

⚠ When local altimeter setting not received, use Ephrata altimeter setting; increase all DA/MDA 40 feet and Circling Cat D visibility 1/4 SM. For inop MALSR, increase S-LOC 32R Cat D visibility to RVR 5000. *RVR 1800 authorized with use of FD or AP or HUD to DA, NA when using Ephrata altimeter setting.

MALSR MISSED APPROACH: Climb to 1800, then climbing right turn to 4000 on MWH R-054 to BATUM INT/MWH 9.8 DME and hold, continue climb-in-hold to 4000.

ATIS 119.05	GRANT COUNTY APP CON * 126.4 379.95	GRANT COUNTY TOWER * 118.25 (CTAF) 257.8 (EAST) 128.0 257.8 (WEST)	GND CON 121.9	UNICOM 122.95
-----------------------	---	--	-------------------------	-------------------------



CATEGORY	A	B	C	D
S-ILS 32R*	1367/24 200 (200-1/2)			
S-LOC 32R	1440/24 273 (300-1/2)		1440/40 273 (300-3/4)	
CIRCLING	1680-1 491 (500-1)		1680-1 1/2 491 (500-1 1/2) 1820-2 631 (700-2)	
FAF to MAP 4.7 NM				
Knots	60	90	120	150 180
Min:Sec	4:42	3:08	2:21	1:53 1:34

NW-1, 22 FEB 2024 to 21 MAR 2024

NW-1, 22 FEB 2024 to 21 MAR 2024

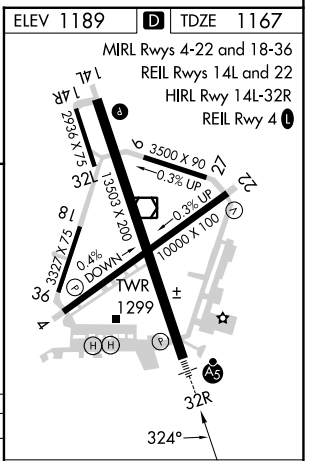
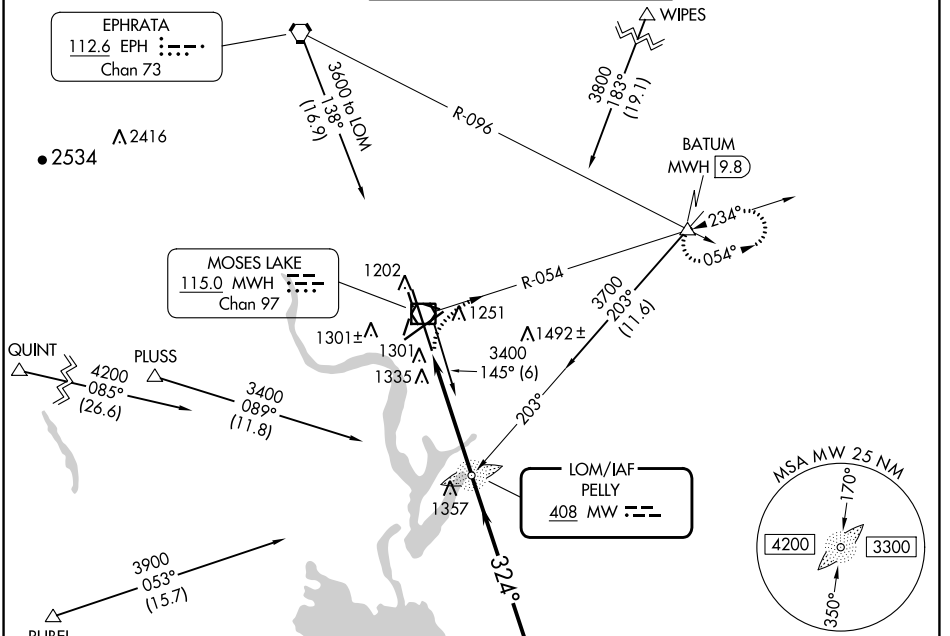
LOM MW 408	APP CRS 324°	Rwy ldg 13492 TDZE 1167 Apt Elev 1189
----------------------	------------------------	--

NDB RWY 32R

GRANT COUNTY INTL (MWH)

MALSR MISSED APPROACH: Climbing right turn to 4000 via MWH R-054 to BATUM INT/MWH 9.8 DME and hold.	
--	--

ATIS 119.05	GRANT COUNTY APP CON * 126.4 379.95	GRANT COUNTY TOWER * 118.25 (CTAF) 257.8 (EAST) 128.0 257.8 (WEST)	GND CON 121.9	UNICOM 122.95
-----------------------	---	--	-------------------------	-------------------------



4000 MWH R-054	BATUM MWH	MW LOM	Remain within 10 NM
		144°	2800
		324°	2600
4.7 NM			

CATEGORY	A	B	C	D
S-32R	1680/40 513 (500-¾)		1680/50 513 (500-1)	1680-1½ 513 (500-1½)
CIRCLING	1680-1 491 (500-1)		1680-1½ 491 (500-1½)	1820-2 631 (700-2)

FAF to MAP 4.7 NM					
Knots	60	90	120	150	180
Min:Sec	4:42	3:08	2:21	1:53	1:34

NW-1, 22 FEB 2024 to 21 MAR 2024

NW-1, 22 FEB 2024 to 21 MAR 2024

APP CRS	Rwy Idg	10000
216°	TDZE	1166
	Apt Elev	1189

RNAV (RNP) Z RWY 22

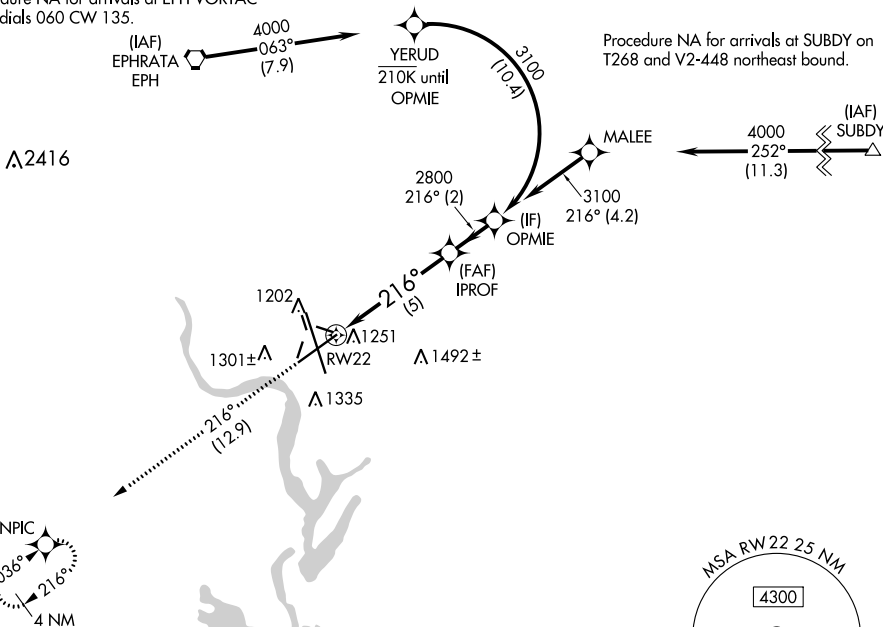
GRANT COUNTY INTL (MWH)

RNP AR APCH-GPS.	MISSED APPROACH: Climb to 4000 on track 216° to ONPIC and hold.
<p>▼ For uncompensated Baro-VNAV systems, procedure NA below</p> <p>▲ -15°C or above 54°C.</p>	

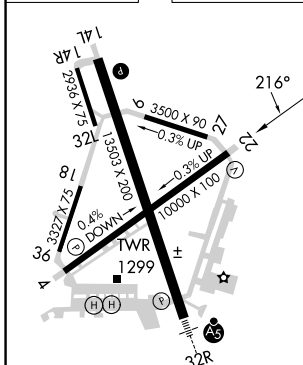
ATIS 119.05	GRANT COUNTY APP CON * 126.4 379.95	GRANT COUNTY TOWER * 118.25 (CTAF) 0 257.8 (EAST) 128.0 257.8 (WEST)	GND CON 121.9	UNICOM 122.95
-----------------------	---	--	-------------------------	-------------------------

Procedure NA for arrivals at EPH VORTAC on radials 060 CW 135.

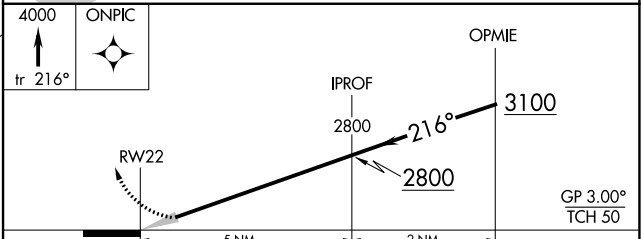
Procedure NA for arrivals at SUBDY on T268 and V2-448 northeast bound.



ELEV 1189	D	TDZE 1166
-----------	----------	-----------



REIL Rwy 4
 REIL Rwy 14L and 22
 HIRL Rwy 14L-32R
 MIRL Rwy 4-22 and 18-36



CATEGORY	A	B	C	D
RNP 0.10 DA	1421- ³ / ₄ 255 (300- ³ / ₄)			
RNP 0.30 DA	1508-1 342 (400-1)			

AUTHORIZATION REQUIRED

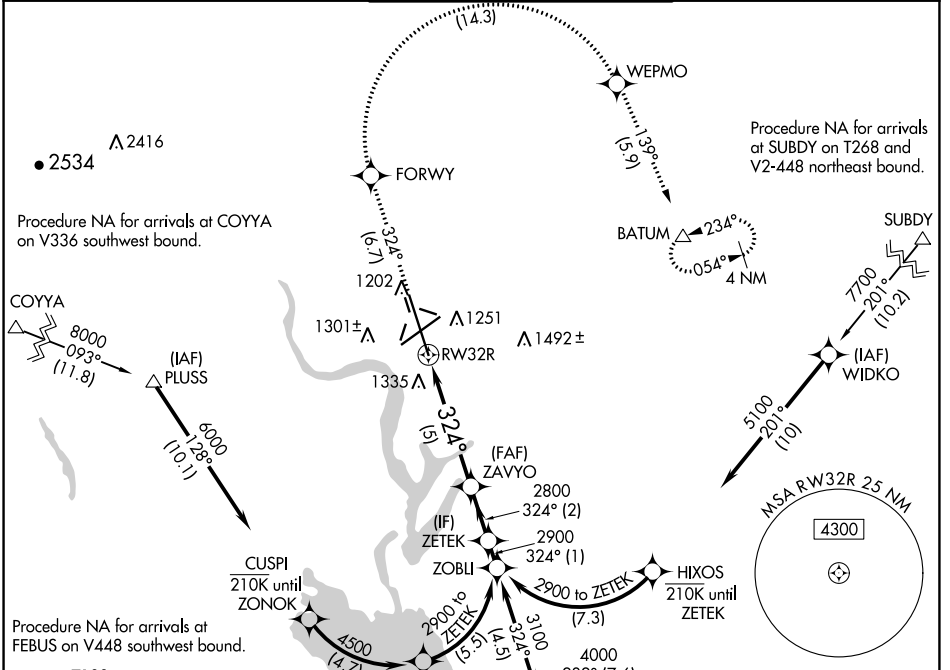
APP CRS	Rwy ldg	13492
324°	TDZE	1167
	Apt Elev	1189

RNAV (RNP) Z RWY 32R

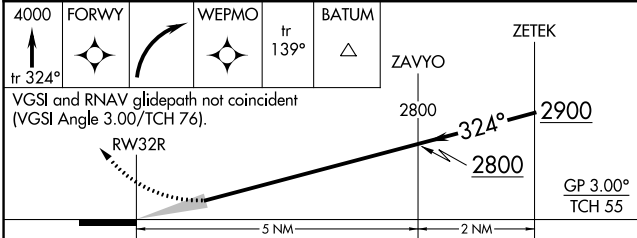
GRANT COUNTY INTL (MWH)

RNP AR APCH-GPS.		MALSR	MISSED APPROACH: Climb to 4000 on track 324° to FORWY right turn to WEPMO and track 139° to BATUM and hold.
<p>⚠ For uncompensated Baro-VNAV systems, procedure NA below -15°C or above 54°C. For inoperative ALS increase RNP 0.10 visibility all Cats to RVR 4000, increase RNP 0.30 visibility all Cats to RVR 6000.</p>			

ATIS 119.05	GRANT COUNTY APP CON * 126.4 379.95	GRANT COUNTY TOWER * 118.25 (CTAF) 257.8 (EAST) 128.0 257.8 (WEST)	GND CON 121.9	UNICOM 122.95
-----------------------	---	--	-------------------------	-------------------------



4000	FORWY	WEPMO	BATUM	ZAVYO	ZETEK
tr 324°			tr 139°		



CATEGORY	A	B	C	D
RNP 0.10 DA		1417/24	250 (300-½)	
RNP 0.30 DA		1564/35	397 (400-⅔)	

AUTHORIZATION REQUIRED

ELEV 1189	TDZE 1167
-----------	-----------

REIL Rwy 4

REIL Rwys 14L and 22

HIRL Rwy 14L-32R

MIRL Rwys 4-22 and 18-36

NW-1, 22 FEB 2024 to 21 MAR 2024

NW-1, 22 FEB 2024 to 21 MAR 2024

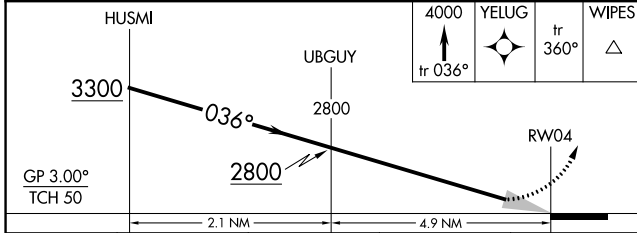
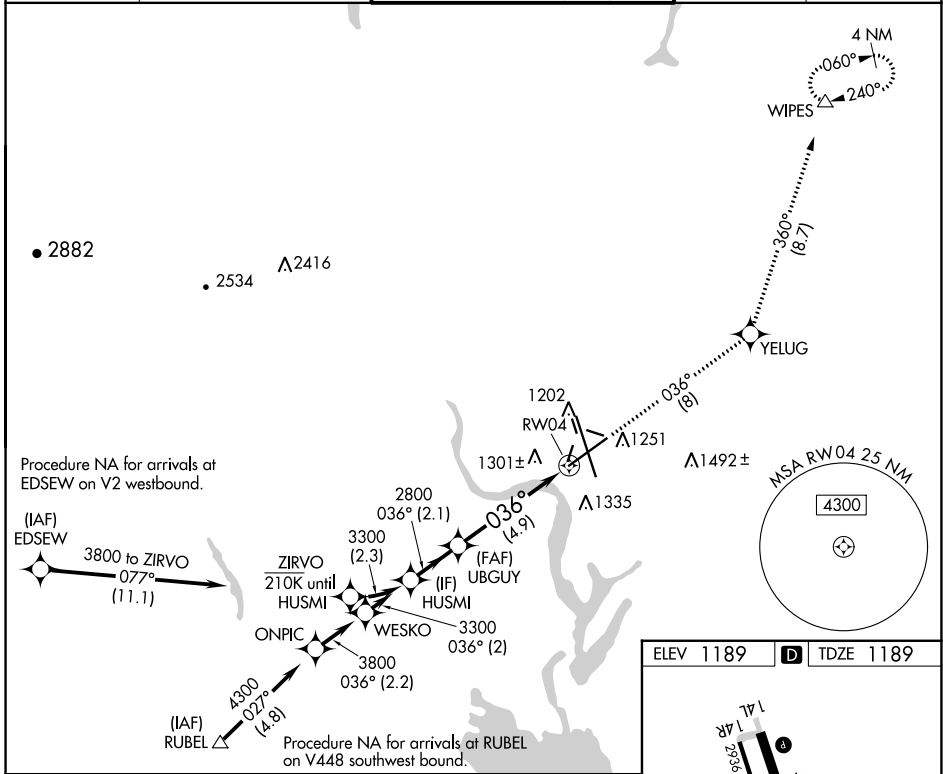
APP CRS	Rwy Idg	10000
036°	TDZE	1189
	Apt Elev	1189

RNAV (RNP) Z RWY 4

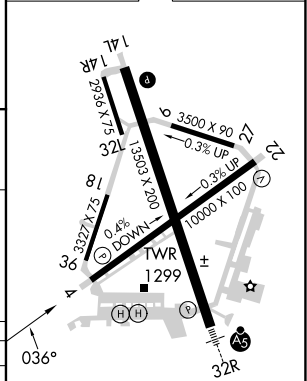
GRANT COUNTY INTL (MWH)

RNP AR APCH-GPS.		MISSED APPROACH: Climb to 4000 on track 036° to YELUG and track 360° to WIPES and hold.	

ATIS 119.05	GRANT COUNTY APP CON * 126.4 379.95	GRANT COUNTY TOWER * 118.25 (CTAF) 0 257.8 (EAST) 128.0 257.8 (WEST)	GND CON 121.9	UNICOM 122.95
-----------------------	---	--	-------------------------	-------------------------



ELEV 1189	D	TDZE 1189
-----------	----------	-----------



CATEGORY	A	B	C	D
RNP 0.10 DA	1549-1 360 (400-1)			
RNP 0.30 DA	1644-1 ³ / ₈ 455 (500-1 ³ / ₈)			

AUTHORIZATION REQUIRED

REIL Rwy 4
REIL Rwy 14L and 22
HIRL Rwy 14L-32R
MIRL Rwy 4-22 and 18-36

NW-1, 22 FEB 2024 to 21 MAR 2024

NW-1, 22 FEB 2024 to 21 MAR 2024

WAAS CH 90509 W14A	APP CRS 144°	Rwy ldg 13503 TDZE 1169 Apt Elev 1189
--	------------------------	--

RNAV (GPS) Y RWY 14L

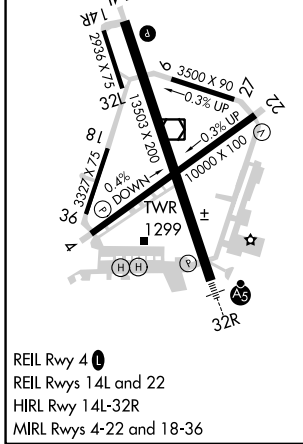
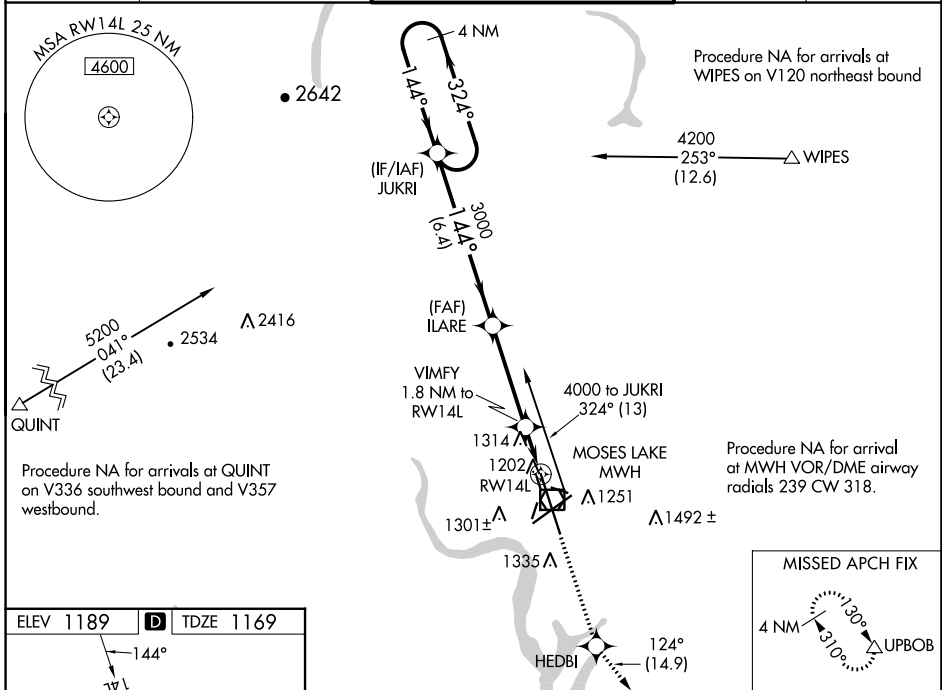
GRANT COUNTY INTL (MWH)

RNP APCH.

▼ For uncompensated Baro-VNAV systems, LNAV/VNAV NA below -17°C or above 36°C.
 ▲ Baro-VNAV and VDP NA when using Ephrata altimeter setting. When local altimeter setting not received, use Ephrata altimeter setting; increase all DA 36 feet and all MDA 40 feet, increase LNAV/VNAV visibility all Cats 1/8 SM, LNAV Cats C and D and Circling Cat D 1/4 SM.

MISSED APPROACH: Climb to 4000 direct HEDBI and on track 124° to UPBOB and hold.

ATIS 119.05	GRANT COUNTY APP CON * 126.4 379.95	GRANT COUNTY TOWER * 118.25 (CTAF) 0 257.8 (EAST) 128.0 257.8 (WEST)	GND CON 121.9	UNICOM 122.95
-----------------------	---	--	-------------------------	-------------------------



MOSES LAKE, WASHINGTON
 Amdt 1C 20MAY21

VGSi and RNAV glidepath not coincident (VGSi Angle 3.00/TCH 75). 4000 HEDBI tr 124° UPBOB *LNAV only.				
Holding Pattern: 4000 ← 324° → 3000 GP 3.00° TCH 52				
*1.1 NM to RW14L				
6.4 NM 3.8 NM 0.7 1.1 NM				
CATEGORY	A	B	C	D
LPV DA		1369-3/4	200 (200-3/4)	
LNAV/VNAV DA		1436-7/8	267 (300-7/8)	
LNAV MDA	1580-1	411 (400-1)	1580-1 1/8	411 (400-1 1/8)
CIRCLING	1660-1	471 (500-1)	1680-1 1/2	1820-2 631 (700-2)

NW-1, 22 FEB 2024 to 21 MAR 2024

NW-1, 22 FEB 2024 to 21 MAR 2024

WAAS CH 70410 W22A	APP CRS 216°	Rwy Idg TDZE 1166 Apt Elev 1189	10000
--	------------------------	---	--------------

RNAV (GPS) Y RWY 22

GRANT COUNTY INTL (MWH)

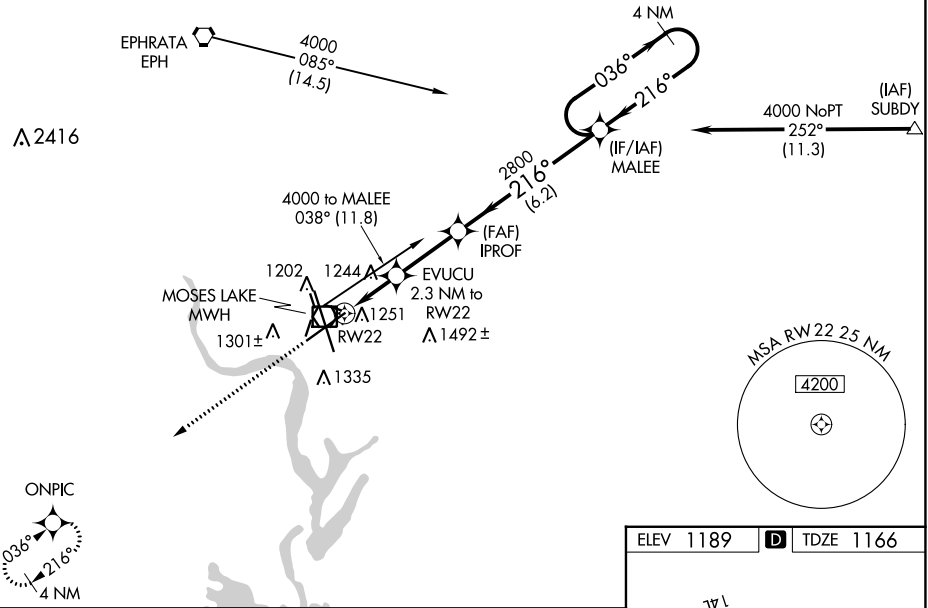
RNP APCH.

⚠ For uncompensated Baro-VNAV systems, LNAV/VNAV NA below -17°C or above 36°C. Baro-VNAV and VDP NA when using Ephrata altimeter setting. When local altimeter setting not received, use Ephrata altimeter setting; increase all DA 36 feet and all MDA 40 feet, increase LNAV/VNAV all Cats visibility and LNAV Cats C and D visibility $\frac{1}{8}$ SM and Circling Cat D visibility $\frac{1}{4}$ SM.

MISSED APPROACH:
Climb to 4000 direct ONPIC and hold.

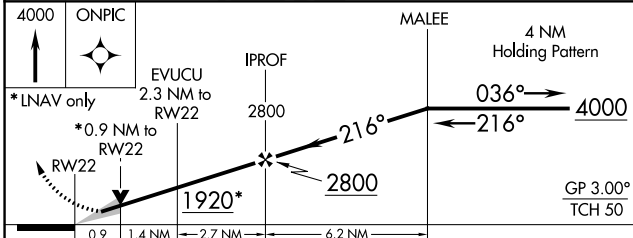
ATIS 119.05	GRANT COUNTY APP CON * 126.4 379.95	GRANT COUNTY TOWER * 118.25 (CTAF) 0 257.8 (EAST) 128.0 257.8 (WEST)	GND CON 121.9	UNICOM 122.95
-----------------------	---	--	-------------------------	-------------------------

Procedure NA for arrivals at EPH VORTAC on airway radials 060 CW 135.

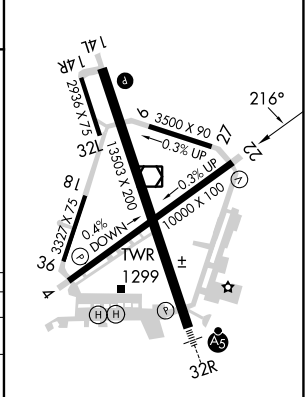


NW-1, 22 FEB 2024 to 21 MAR 2024

NW-1, 22 FEB 2024 to 21 MAR 2024



ELEV 1189	D TDZE 1166
-----------	--------------------



CATEGORY	A	B	C	D
LPV DA		1366- $\frac{3}{4}$	200 (200- $\frac{3}{4}$)	
LNAV/VNAV DA		1429- $\frac{7}{8}$	263 (300- $\frac{7}{8}$)	
LNAV MDA		1500-1	334 (400-1)	
CIRCLING	1660-1	471 (500-1)	1680-1 $\frac{1}{2}$ 491 (500-1 $\frac{1}{2}$)	1820-2 631 (700-2)

REIL Rwy 4 **1**

REIL Rws 14L and 22

HRL Rwy 14L-32R

MRL Rws 4-22 and 18-36

WAAS CH 77799 W32A	APP CRS 324°	Rwy ldg 13492 TDZE 1167 Apt Elev 1189
--	------------------------	--

RNAV (GPS) Y RWY 32R

GRANT COUNTY INTL (MWH)

RNP APCH-GPS.

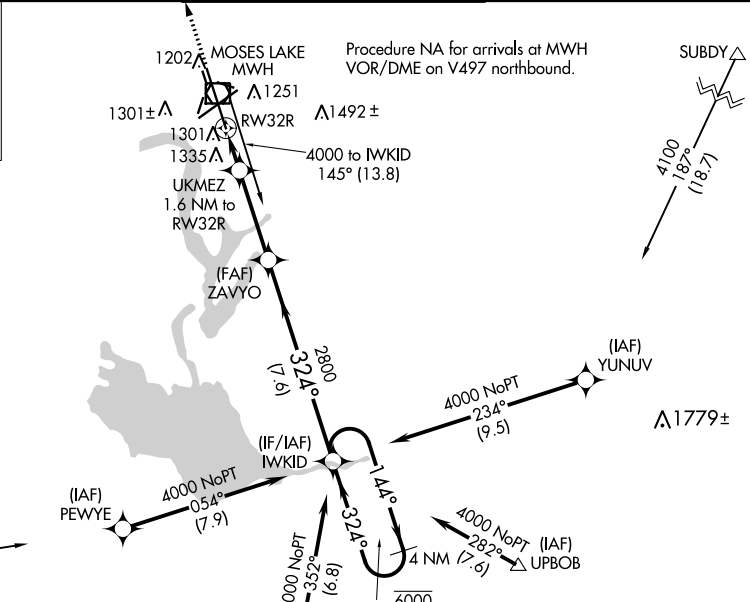
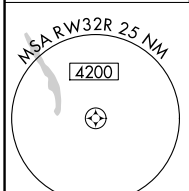
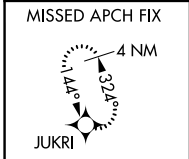
⚠ For uncompensated Baro-VNAV systems, LNAV/VNAV NA below -15°C or above 54°C. Circling Rwy 9/27, 18/36 NA at night. For inop ALS increase LNAV/VNAV all Cats visibility to RVR 5500, increase LNAV Cat C and D visibility to 1/2 SM.
*RVR 1800 authorized with use of FD or AP or HUD to DA (NA when using Ephrata altimeter setting).

MALSR

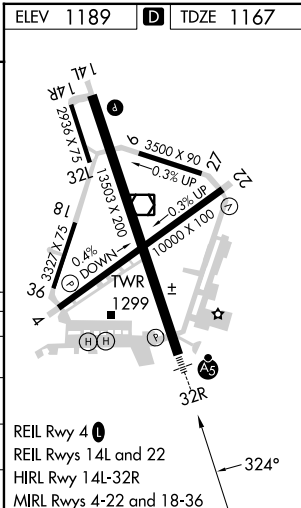
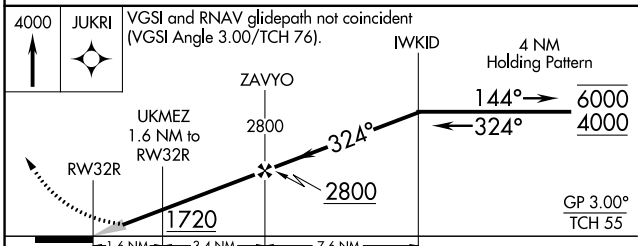


MISSED APPROACH: Climb to 4000 direct JUKRI and hold.

ATIS 119.05	GRANT COUNTY APP CON * 126.4 379.95	GRANT COUNTY TOWER * 118.25 (CTAF) 0 257.8 (EAST) 128.0 257.8 (WEST)	GND CON 121.9	UNICOM 122.95
-----------------------	---	--	-------------------------	-------------------------



ELEV 1189	TDZE 1167
-----------	-----------



CATEGORY	A	B	C	D
LPV DA*		1367/24	200 (200-1/2)	
LNAV/VNAV DA		1540/35	373 (400-3/4)	
LNAV MDA	1620/24	453 (500-1/2)	1620/45	453 (500-3/4)
CIRCLING	1660-1	471 (500-1)	1680-1 1/2	1820-2
			491 (500-1 1/2)	631 (700-2)

REIL Rwy 4
REIL Rwy 14L and 22
HIRL Rwy 14L-32R
MIRL Rwy 4-22 and 18-36

NW-1, 22 FEB 2024 to 21 MAR 2024

NW-1, 22 FEB 2024 to 21 MAR 2024

WAAS CH 42809 W04A	APP CRS 036°	Rwy ldg 10000 TDZE 1189 Apt Elev 1189
--	------------------------	--

RNAV (GPS) Y RWY 4

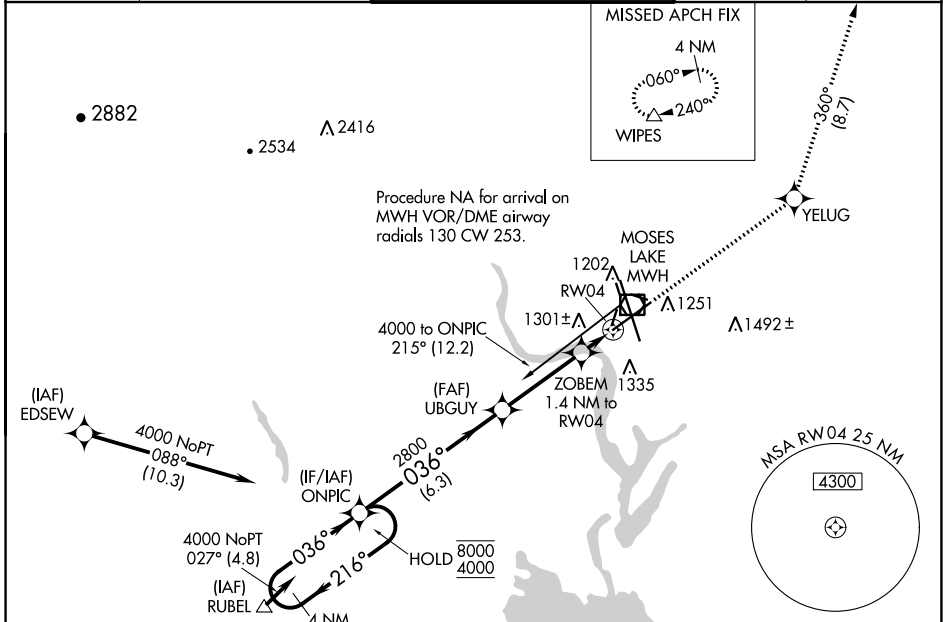
GRANT COUNTY INTL (MWH)

RNP APCH-GPS.

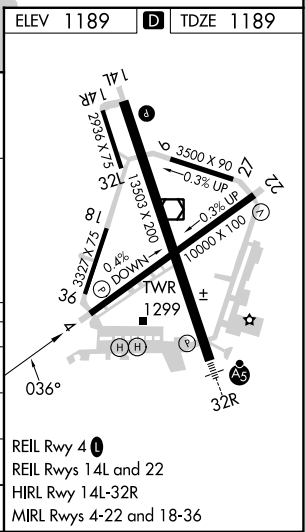
⚠ Circling Rwy 9/27, 18/36 NA at night. For uncompensated Baro-VNAV systems, LNAV/VNAV NA below -15°C or above 54°C.

MISSED APPROACH: Climb to 4000 direct YELUG and on track 360° to WIPES and hold.

ATIS 119.05	GRANT COUNTY APP CON ★ 126.4 379.95	GRANT COUNTY TOWER ★ 118.25 (CTAF) 0 257.8 (EAST) 128.0 257.8 (WEST)	GND CON 121.9	UNICOM 122.95
-----------------------	---	---	-------------------------	-------------------------



	4000	YELUG	tr 360°	WIPES
8000	4000	2800	1680	
GP 3.00°				
TCH 50				
	6.3 NM	3.5 NM	1.4 NM	
CATEGORY	A	B	C	D
LPV DA		1389-3/4	200 (200-3/4)	
LNAV/VNAV DA		1461-7/8	272 (300-7/8)	
LNAV MDA		1560-1	371 (400-1)	
C CIRCLING	1660-1	471 (500-1)	1680-1 1/2 491 (500-1 1/2)	1820-2 631 (700-2)



NW-1, 22 FEB 2024 to 21 MAR 2024

NW-1, 22 FEB 2024 to 21 MAR 2024

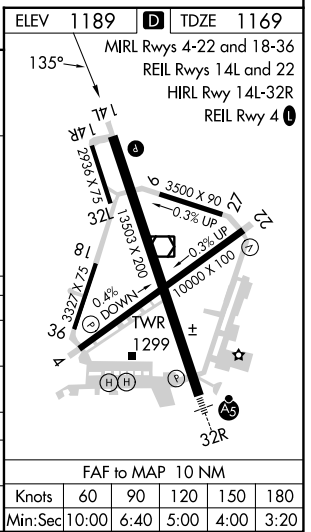
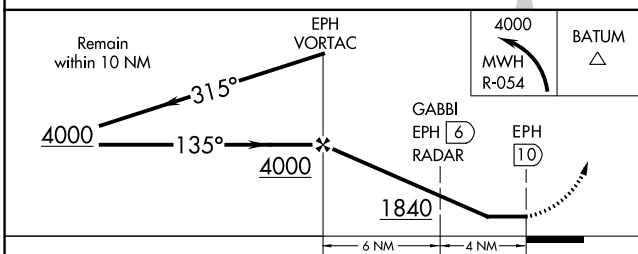
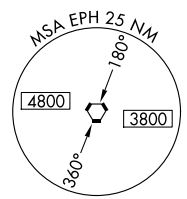
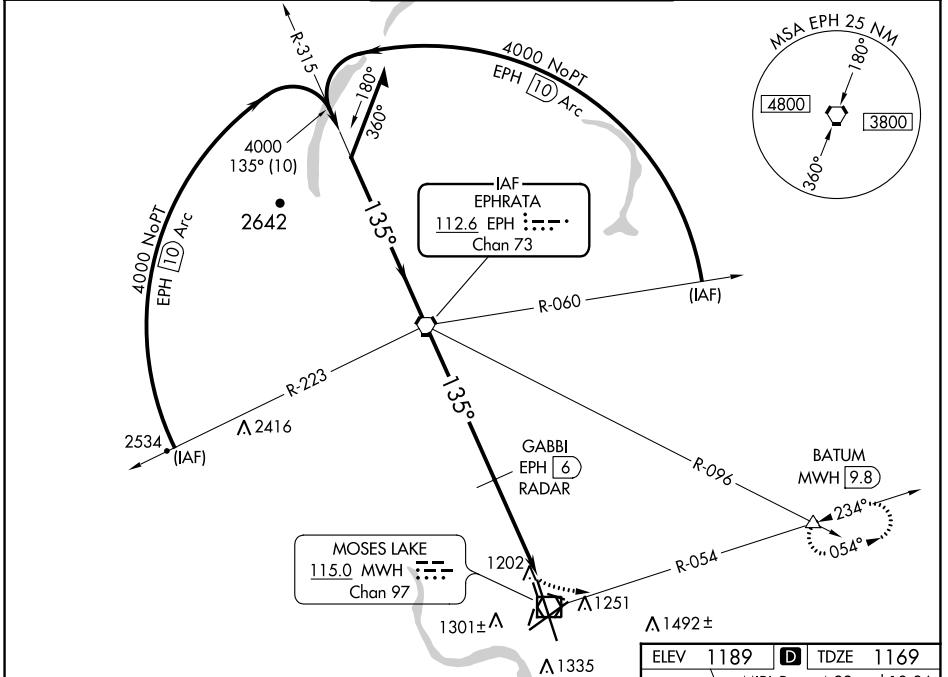
VORTAC EPH 112.6 Chan 73	APP CRS 135°	Rwy Idg 13503 TDZE 1169 Apt Elev 1189
---------------------------------------	------------------------	--

VOR-1 RWY 14L

GRANT COUNTY INTL (MWH)

⚠ MISSED APPROACH: Climbing left turn to 4000 via MWH R-054 to BATUM INT/MWH 9.8 DME and hold.

ATIS 119.05	GRANT COUNTY APP CON * 126.4 379.95	GRANT COUNTY TOWER * 118.25 (CTAF) 257.8 (EAST) 128.0 257.8 (WEST)	GND CON 121.9	UNICOM 122.95
-----------------------	---	---	-------------------------	-------------------------



CATEGORY	A	B	C	D
S-14L	1840-1 671 (700-1)		1840-2 671 (700-2)	1840-2 1/4 671 (700-2 1/4)
CIRCLING	1840-1 651 (700-1)		1840-2 651 (700-2)	1840-2 1/4 651 (700-2 1/4)
GABBI DME or RADAR MINIMUMS				
S-14L	1640-1 471 (500-1)		1640-1 1/4 471 (500-1 1/4)	1640-1 1/2 471 (500-1 1/2)
CIRCLING	1680-1 491 (500-1)		1680-1 1/2 491 (500-1 1/2)	1820-2 631 (700-2)

NW-1, 22 FEB 2024 to 21 MAR 2024

NW-1, 22 FEB 2024 to 21 MAR 2024

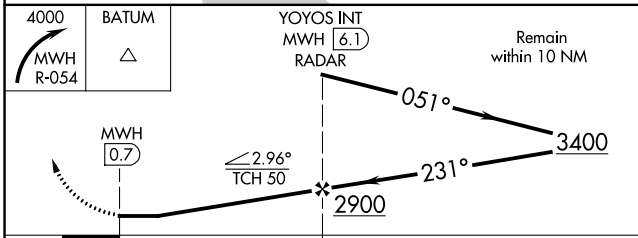
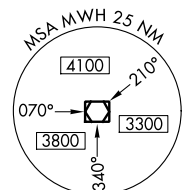
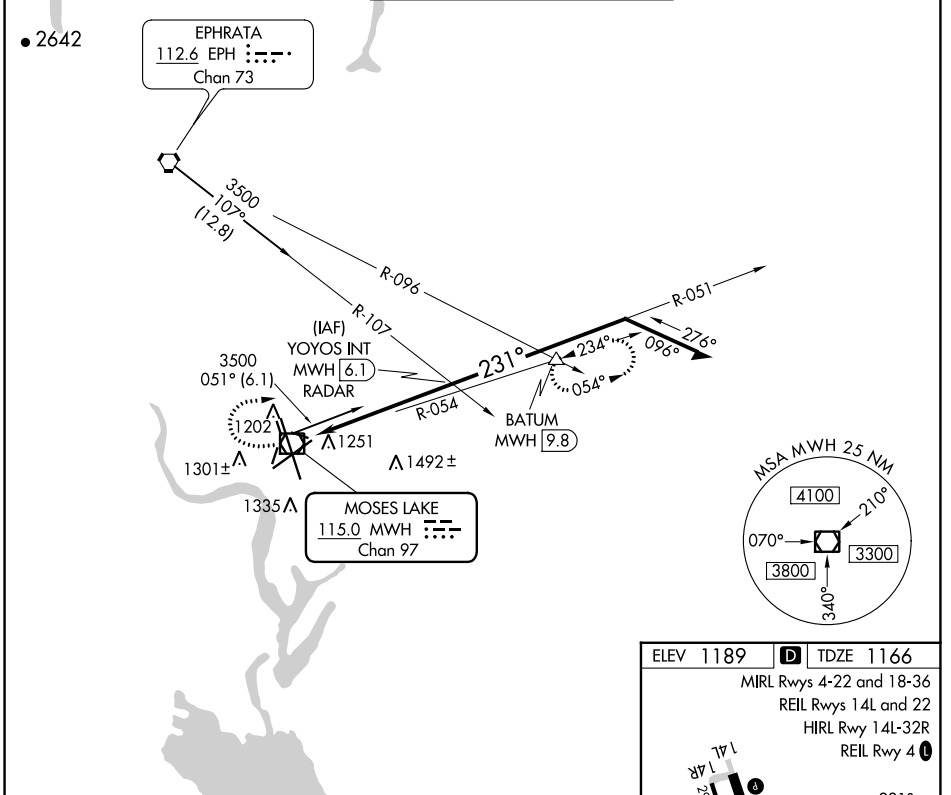
FAF to MAP 10 NM					
Knots	60	90	120	150	180
Min:Sec	10:00	6:40	5:00	4:00	3:20

VOR/DME MWH 115.0 Chan 97	APP CRS 231°	Rwy ldg 10000 TDZE 1166 Apt Elev 1189
---	------------------------	--

VOR RWY 22
GRANT COUNTY INTL (MWH)

⚠ MISSED APPROACH: Climbing right turn to 4000 via MWH R-054 to BATUM INT/MWH 9.8 DME and hold.

ATIS 119.05	GRANT COUNTY APP CON * 126.4 379.95	GRANT COUNTY TOWER * 118.25 (CTAF) 257.8 (EAST) 128.0 257.8 (WEST)	GND CON 121.9	UNICOM 122.95
-----------------------	---	--	-------------------------	-------------------------



CATEGORY	A	B	C	D
S-22	1760-1 594 (600-1)		1760-1½ 594 (600-1½)	1760-1¾ 594 (600-1¾)
CIRCLING	1760-1 571 (600-1)		1760-1½ 571 (600-1½)	1820-2 631 (700-2)

ELEV 1189 [D] TDZE 1166

MIRL Rws 4-22 and 18-36
REIL Rws 14L and 22
HIRL Rwy 14L-32R
REIL Rwy 4

FAF to MAP 5.4 NM

Knots	60	90	120	150	180
Min:Sec	5:24	3:36	2:42	2:10	1:48

NW-1, 22 FEB 2024 to 21 MAR 2024

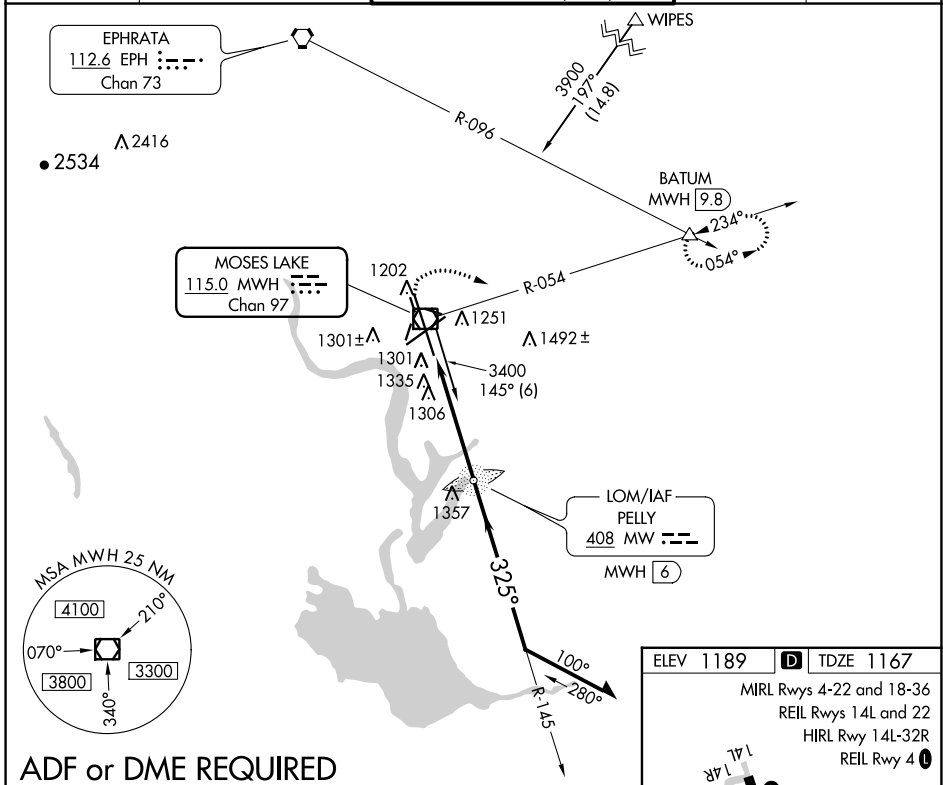
NW-1, 22 FEB 2024 to 21 MAR 2024

VOR/DME MWH 115.0 Chan 97	APP CRS 325°	Rwy Idg 13492 TDZE 1167 Apt Elev 1189
---	------------------------	--

VOR RWY 32R

GRANT COUNTY INTL (MWH)

		MISSED APPROACH: Climbing right turn to 4000 via MWH R-054 to BATUM INT/MWH 9.8 DME and hold.		
		ATIS 119.05	GRANT COUNTY APP CON * 126.4 379.95	GRANT COUNTY TOWER * 118.25 (CTAF) 257.8 (EAST) 128.0 257.8 (WEST)



NW-1, 22 FEB 2024 to 21 MAR 2024

NW-1, 22 FEB 2024 to 21 MAR 2024

ADF or DME REQUIRED

ELEV 1189	TDZE 1167
MIRL Rwy 4-22 and 18-36 REIL Rwy 14L and 22 HIRL Rwy 14L-32R REIL Rwy 4	

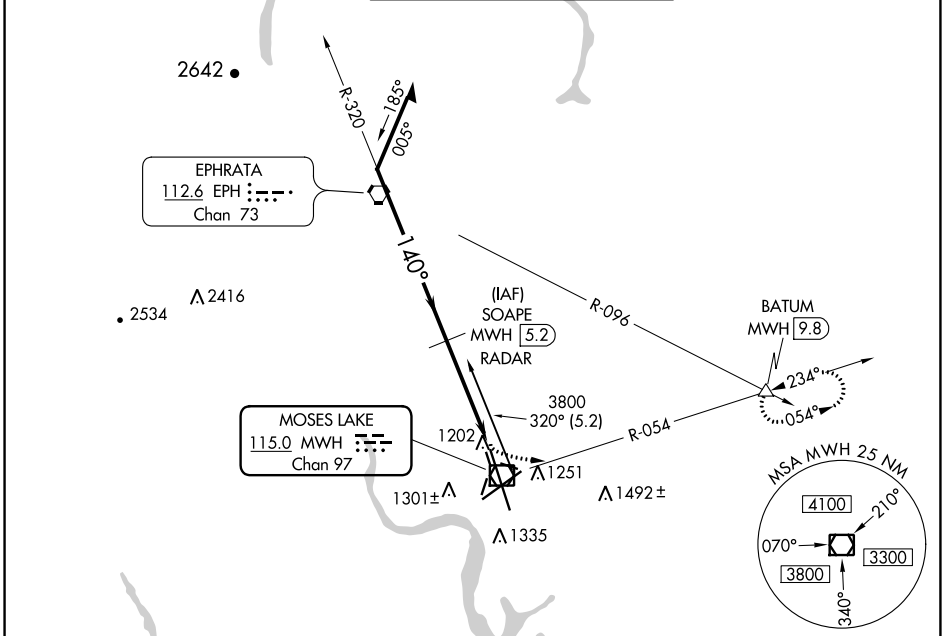
VOR/DME MWH 115.0 Chan 97	APP CRS 140°	Rwy ldg 13503 TDZE 1169 Apt Elev 1189
---	------------------------	--

VOR-3 RWY 14L

GRANT COUNTY INTL (MWH)

		MISSED APPROACH: Climbing left turn to 4000 via MWH R-054 to BATUM INT/MWH 9.8 DME and hold.		
--	--	--	--	--

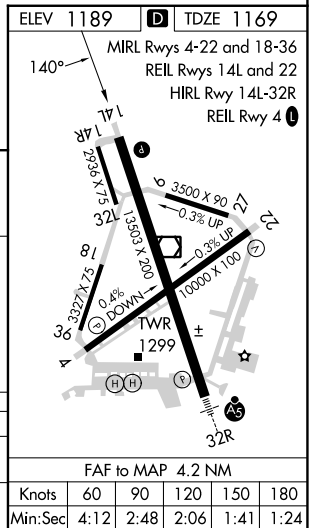
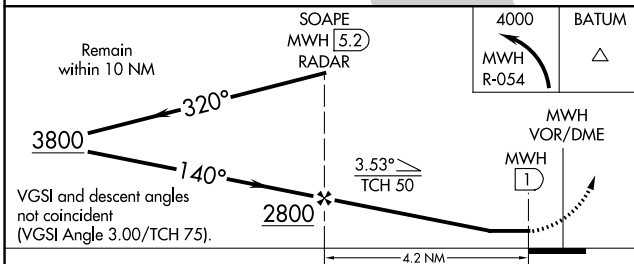
ATIS 119.05	GRANT COUNTY APP CON * 126.4 379.95	GRANT COUNTY TOWER * 118.25 (CTAF) 257.8 (EAST) 128.0 257.8 (WEST)	GND CON 121.9	UNICOM 122.95
-----------------------	---	--	-------------------------	-------------------------



NW-1, 22 FEB 2024 to 21 MAR 2024

NW-1, 22 FEB 2024 to 21 MAR 2024

RADAR or DME REQUIRED



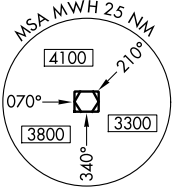
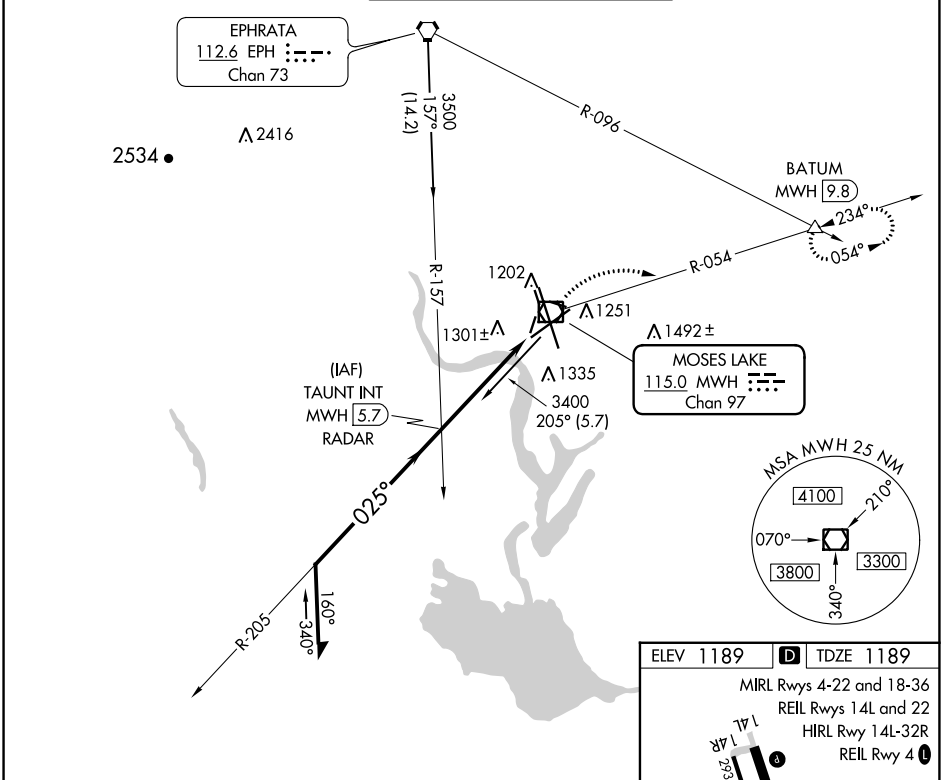
VOR/DME MWH 115.0 Chan 97	APP CRS 025°	Rwy Idg 10000 TDZE 1189 Apt Elev 1189
---	------------------------	--

VOR RWY 4

GRANT COUNTY INTL (MWH)

MISSED APPROACH: Climbing right turn to 4000 via MWH R-054 to BATUM INT/MWH 9.8 DME and hold.

ATIS 119.05	GRANT COUNTY APP CON * 126.4 379.95	GRANT COUNTY TOWER * 118.25 (CTAF) 257.8 (EAST) 128.0 257.8 (WEST)	GND CON 121.9	UNICOM 122.95
-----------------------	---	--	-------------------------	-------------------------

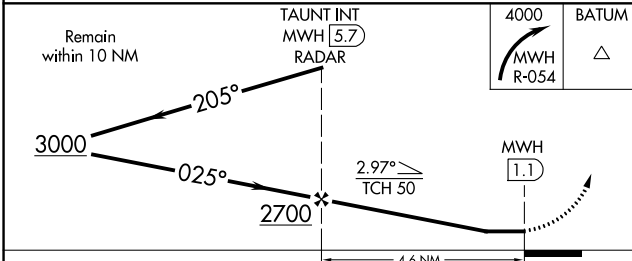


ELEV 1189 **D** TDZE 1189

MIRL Rwy 4-22 and 18-36
REIL Rwy 14L and 22
HIRL Rwy 14L-32R
REIL Rwy 4

FAF to MAP 4.6 NM

Knots	60	90	120	150	180
Min:Sec	4:36	3:04	2:18	1:50	1:32



CATEGORY	A	B	C	D
S-4	1620-1	431 (500-1)	1620-1½ 431 (500-1½)	1620-1½ 431 (500-1½)
CIRCLING	1680-1	491 (500-1)	1680-1½ 491 (500-1½)	1820-2 631 (700-2)

NW-1, 22 FEB 2024 to 21 MAR 2024

NW-1, 22 FEB 2024 to 21 MAR 2024