

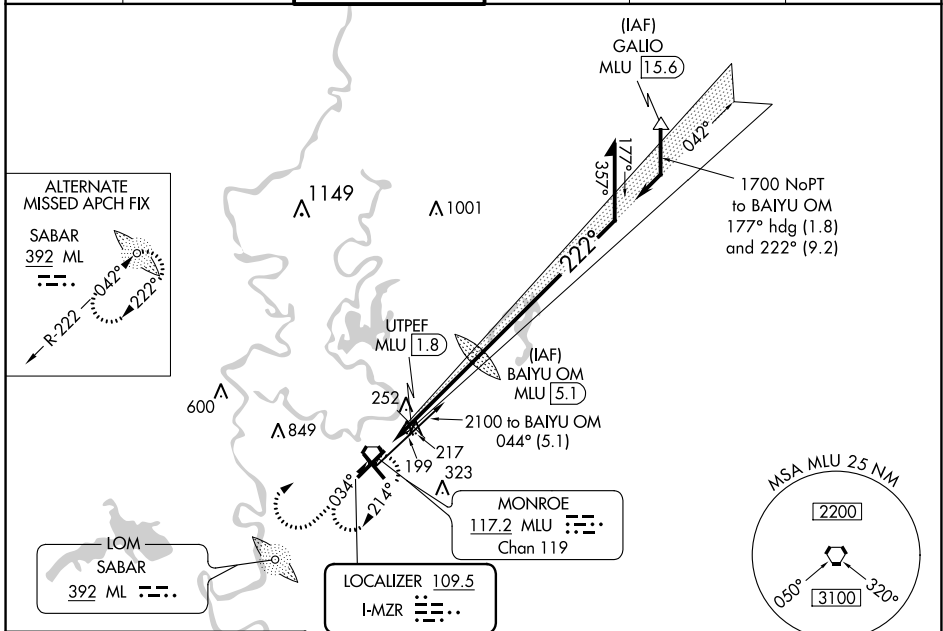
LOC I-MZR 109.5	APP CRS 222°	Rwy Idg TDZE Apt Elev	7504 78 79
---------------------------	------------------------	-----------------------------	---------------------------------------

ILS or LOC RWY 22

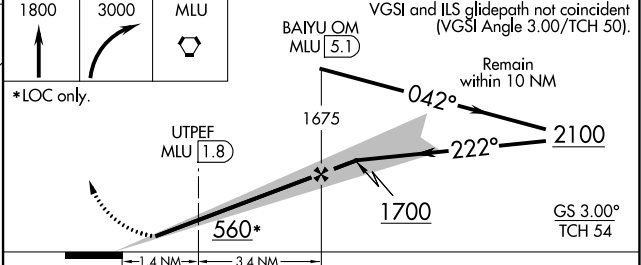
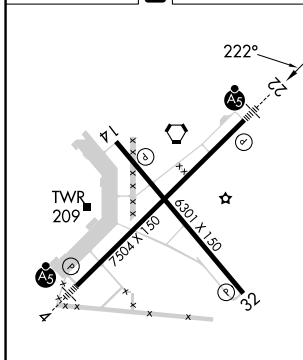
MONROE RGNL (MLU)

DME or RADAR required for procedure entry.		MALSR 	MISSED APPROACH: Climb to 3000 direct MLU VORTAC and hold, continue climb-in-hold to 3000.
 Circling Rwy 14 NA at night. For inop ALS, increase S-LOC 22 Cat C/D visibility to 1 3/8 SM. # DME from MLU VORTAC.			

ATIS 125.05	MONROE APP CON * 118.15 290.475	MONROE TOWER * 118.9 (CTAF) 257.8	GND CON 121.9	CLNC DEL 121.65	UNICOM 122.95
-----------------------	---	---	-------------------------	---------------------------	-------------------------



ELEV 79	D TDZE 78
---------	-----------



CATEGORY	A	B	C	D
S-ILS 22	278-1/2 200 (200-1/2)			
S-LOC 22	560-1/2	482 (500-1/2)	560-1	482 (500-1)
CIRCLING	580-1	501 (600-1)	740-1 3/4 661 (700-1 3/4)	1160-3 1081 (1100-3)
# UTPEF FIX MINIMUMS				
S-LOC 22	500-1/2	422 (500-1/2)	500-3/4	422 (500-3/4)
CIRCLING	580-1	501 (600-1)	740-1 3/4 661 (700-1 3/4)	1160-3 1081 (1100-3)

REIL Rws 14 and 32
MIRL Rwy 14-32
HIRL Rwy 4-22

FAF to MAP 4.8 NM

Knots	60	90	120	150	180
Min:Sec	4:48	3:12	2:24	1:55	1:36

SC-4, 22 FEB 2024 to 21 MAR 2024

SC-4, 22 FEB 2024 to 21 MAR 2024

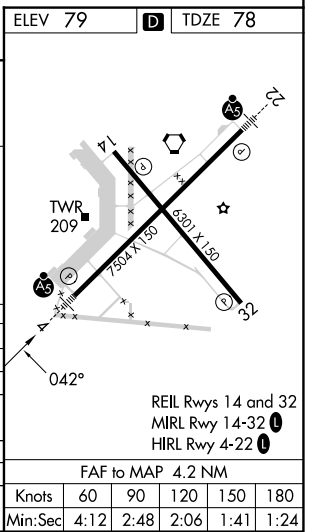
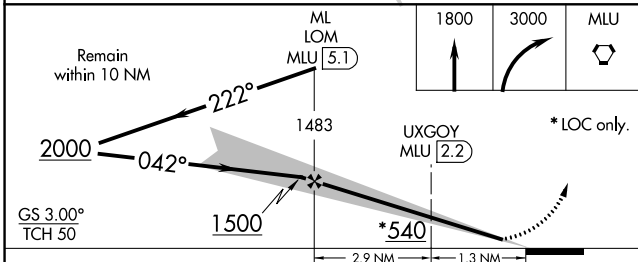
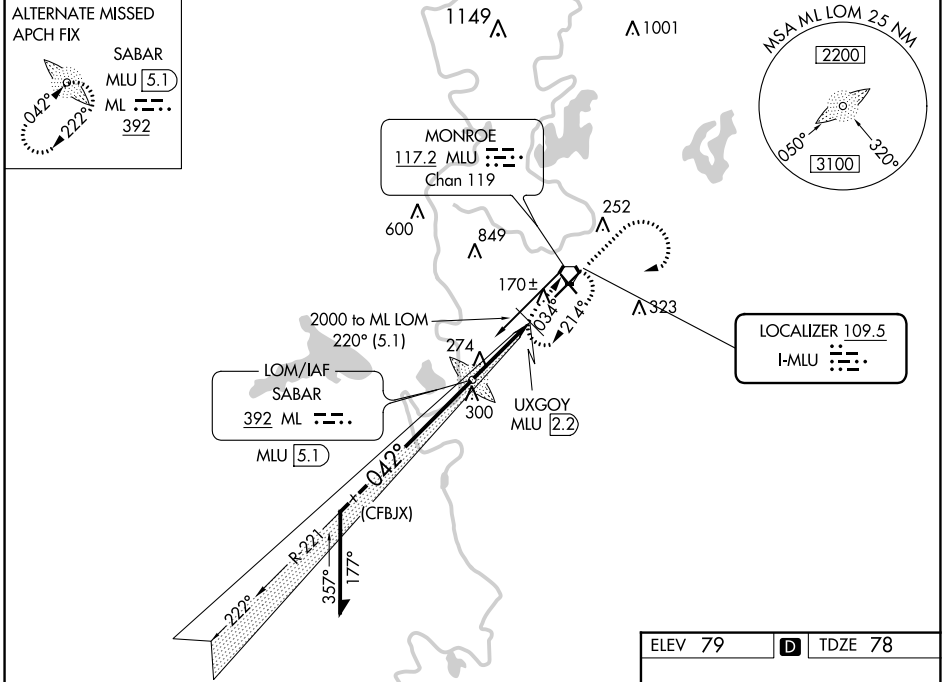
LOC I-MLU 109.5	APP CRS 042°	Rwy Idg 7504 TDZE 78 Apt Elev 79
---------------------------	------------------------	---

ILS or LOC RWY 4

MONROE RGNL (MLU)

ADF or DME required for procedure entry.		MALSR	MISSED APPROACH: Climb to 1800 then climbing right turn to 3000 direct MLU VORTAC and hold.
⚠ Circling Rwy 14 NA at night. For inop ALS, increase S-LOC 4 Cat C/D visibility to 1½ SM. ⚠ UXGOY FIX MINIMUMS: For inop ALS, increase S-LOC 4 Cat C/D visibility to RVR 5500. ASR **RVR 1800 authorized with the use of FD or AP or HUD to DA. # DME from MLU VORTAC.			

ATIS 125.05	MONROE APP CON * 118.15 290.475	MONROE TOWER * 118.9 (CTAF) 0 257.8	GND CON 121.9	CLNC DEL 121.65	UNICOM 122.95
-----------------------	---	---	-------------------------	---------------------------	-------------------------



CATEGORY	A	B	C	D
S-ILS 4	**278/24 200 (200-½)			
S-LOC 4	540/24	462 (500-½)	540/50	462 (500-1)
CIRCLING	580-1	501 (600-1)	740-1¾ 661(700-1¾)	1160-3 1081 (1100-3)
# UXGOY FIX MINIMUMS				
S-LOC 4	420/24	342 (400-½)	420/30	342 (400-¾)
CIRCLING	580-1	501 (600-1)	740-1¾ 661 (700-1¾)	1160-3 1081 (1100-3)

FAF to MAP 4.2 NM					
Knots	60	90	120	150	180
Min:Sec	4:12	2:48	2:06	1:41	1:24

SC-4, 22 FEB 2024 to 21 MAR 2024

SC-4, 22 FEB 2024 to 21 MAR 2024

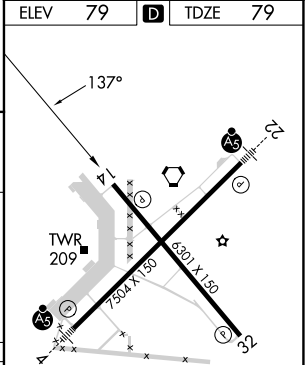
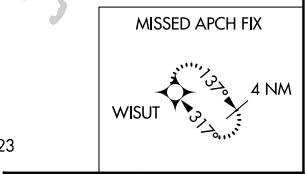
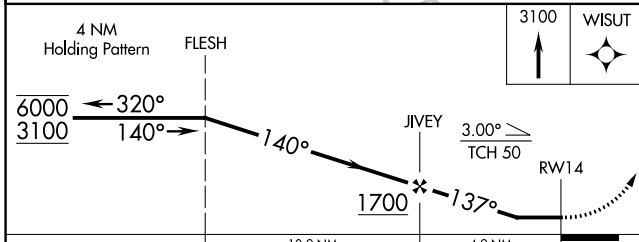
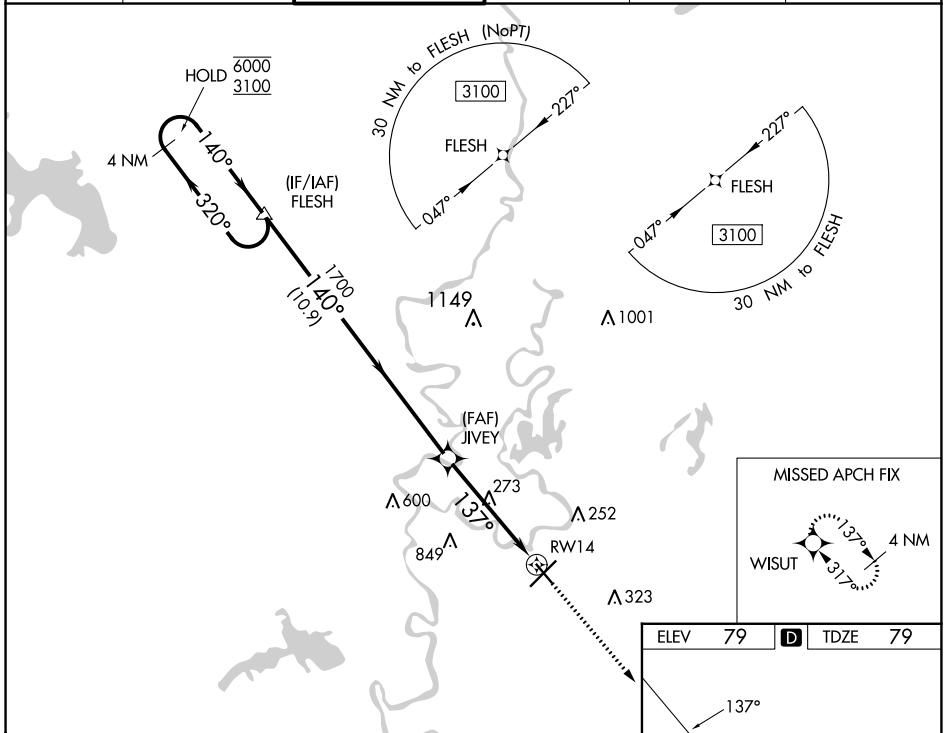
WAAS CH 90542 W14A	APP CRS 137°	Rwy Idg TDZE 79 Apt Elev 79	6301
--	------------------------	---	-------------

RNAV (GPS) RWY 14

MONROE RGNL (MLU)

RNP APCH.		MISSED APPROACH: Climb to 3100 direct WISUT and hold. Continue climb-in-hold to 3100.	
	Rwy 14 helicopter visibility reduction below 1 SM NA. Straight-In and Circling Rwy 14 NA at night.		

ATIS 125.05	MONROE APP CON * 118.15 290.475	MONROE TOWER * 118.9 (CTAF) 0 257.8	GND CON 121.9	CLNC DEL 121.65	UNICOM 122.95
-----------------------	---	--	-------------------------	---------------------------	-------------------------



CATEGORY	A	B	C	D
LP MDA	580-1	501 (600-1)	580-1 $\frac{3}{8}$	501 (600-1 $\frac{3}{8}$)
LNAV MDA	580-1	501 (600-1)	580-1 $\frac{3}{8}$	501 (600-1 $\frac{3}{8}$)
CIRCLING	580-1 501 (600-1)	620-1 541 (600-1)	740-1 $\frac{3}{4}$ 661 (700-1 $\frac{3}{4}$)	1160-3 1081 (1100-3)

HIRL Rwy 4-22

MIRL Rwy 14-32

REIL Rws 14 and 32

SC-4, 22 FEB 2024 to 21 MAR 2024

SC-4, 22 FEB 2024 to 21 MAR 2024

WAAS CH 70510 W22A	APP CRS 222°	Rwy Idg TDZE 78 Apt Elev 79
--	------------------------	---

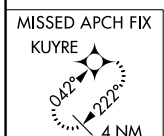
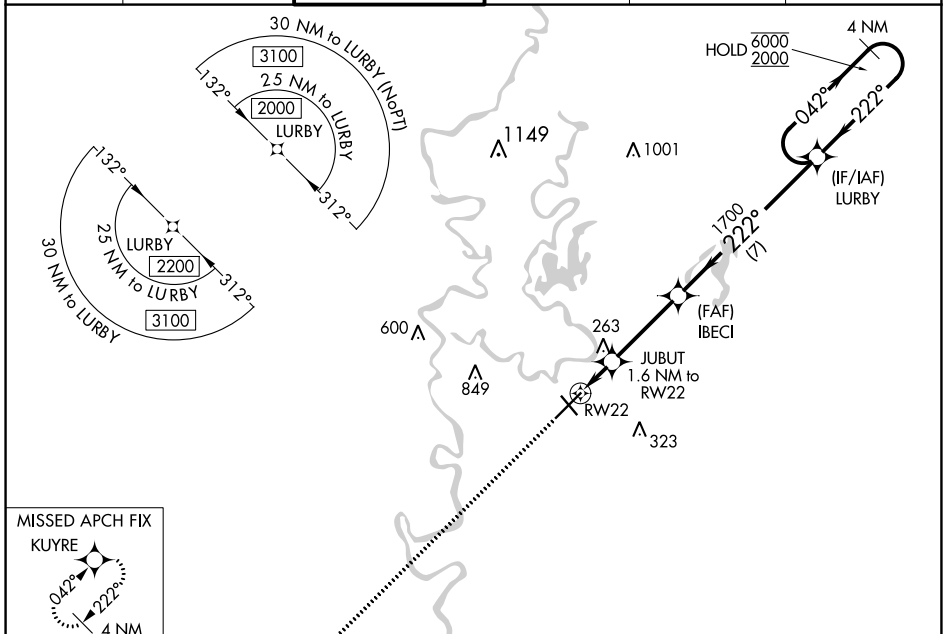
RNAV (GPS) RWY 22

MONROE RGNL (MLU)

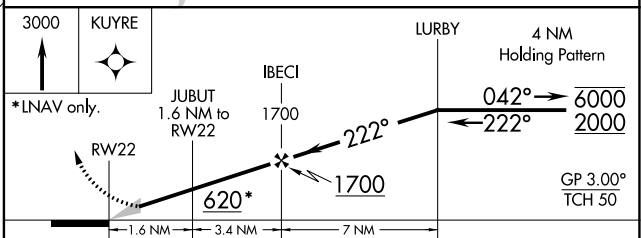
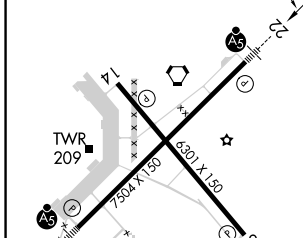
RNP APCH.
 Circling Rwy 14 NA at night. For uncompensated Baro-VNAV systems, LNAV/VNAV NA below -6°C or above 54°C. For inop ALS, increase LNAV/VNAV all Cats visibility to 1½ SM.
 ASR

MALSRL
 MISSED APPROACH: Climb to 3000 direct KUYRE and hold, continue climb-in-hold to 3000.

ATIS 125.05	MONROE APP CON * 118.15 290.475	MONROE TOWER * 118.9 (CTAF) 257.8	GND CON 121.9	CLNC DEL 121.65	UNICOM 122.95
-----------------------	---	---	-------------------------	---------------------------	-------------------------



ELEV 79	D	TDZE 78
----------------	----------	----------------



REIL Rws 14 and 32 MIRL Rwy 14-32 HIRL Rwy 4-22	<table border="1"> <tr> <td>3000</td> <td>KUYRE</td> <td>LURBY</td> <td>4 NM Holding Pattern</td> </tr> <tr> <td>*LNAV only.</td> <td>JUBUT 1.6 NM to RW22</td> <td>IBECI 1700</td> <td>GP 3.00° TCH 50</td> </tr> <tr> <td>RW22</td> <td>620*</td> <td>1700</td> <td></td> </tr> <tr> <td></td> <td>1.6 NM</td> <td>3.4 NM</td> <td>7 NM</td> </tr> </table>	3000	KUYRE	LURBY	4 NM Holding Pattern	*LNAV only.	JUBUT 1.6 NM to RW22	IBECI 1700	GP 3.00° TCH 50	RW22	620*	1700			1.6 NM	3.4 NM	7 NM									
3000	KUYRE	LURBY	4 NM Holding Pattern																							
*LNAV only.	JUBUT 1.6 NM to RW22	IBECI 1700	GP 3.00° TCH 50																							
RW22	620*	1700																								
	1.6 NM	3.4 NM	7 NM																							
<table border="1"> <tr> <td>CATEGORY</td> <td>A</td> <td>B</td> <td>C</td> <td>D</td> </tr> <tr> <td>LPV DA</td> <td></td> <td>278-½</td> <td>200 (200-½)</td> <td></td> </tr> <tr> <td>LNAV/VNAV DA</td> <td></td> <td>534-1</td> <td>456 (500-1)</td> <td></td> </tr> <tr> <td>LNAV MDA</td> <td>520-½</td> <td>442 (500-½)</td> <td>520-⅞</td> <td>442 (500-⅞)</td> </tr> <tr> <td>C CIRCLING</td> <td>540-1 461 (500-1)</td> <td>580-1 501 (600-1)</td> <td>740-1¾ 661 (700-1¾)</td> <td>1160-3 1081 (1100-3)</td> </tr> </table>	CATEGORY	A	B	C	D	LPV DA		278-½	200 (200-½)		LNAV/VNAV DA		534-1	456 (500-1)		LNAV MDA	520-½	442 (500-½)	520-⅞	442 (500-⅞)	C CIRCLING	540-1 461 (500-1)	580-1 501 (600-1)	740-1¾ 661 (700-1¾)	1160-3 1081 (1100-3)	
CATEGORY	A	B	C	D																						
LPV DA		278-½	200 (200-½)																							
LNAV/VNAV DA		534-1	456 (500-1)																							
LNAV MDA	520-½	442 (500-½)	520-⅞	442 (500-⅞)																						
C CIRCLING	540-1 461 (500-1)	580-1 501 (600-1)	740-1¾ 661 (700-1¾)	1160-3 1081 (1100-3)																						

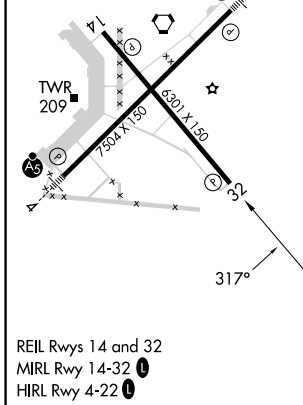
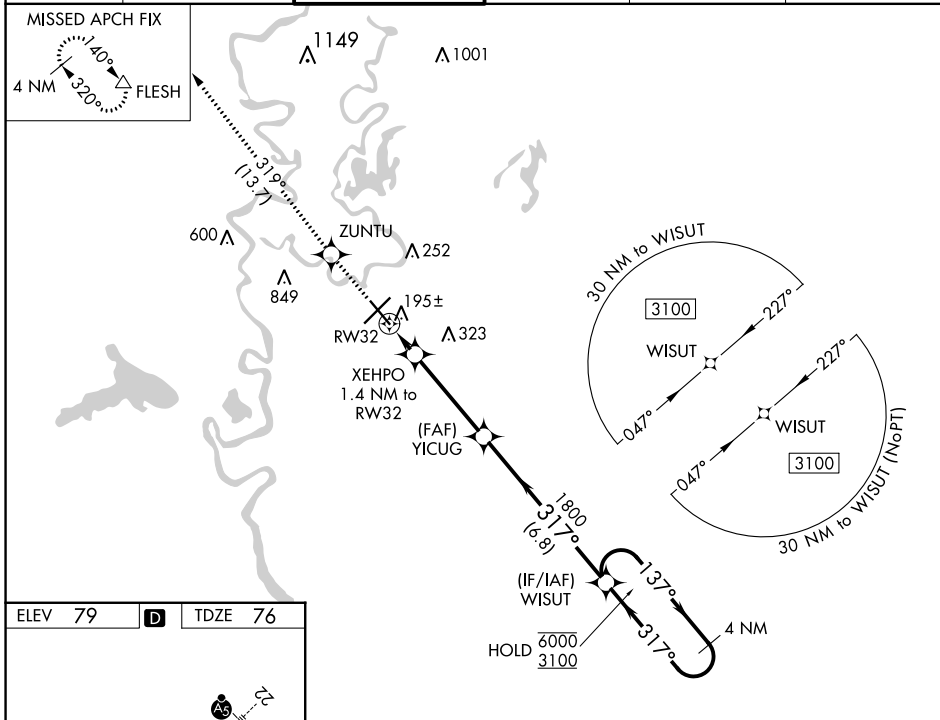
WAAS CH 56428 W32A	APP CRS 317°	Rwy Idg TDZE 76 Apt Elev 79	6301
--	------------------------	---	-------------

RNAV (GPS) RWY 32

MONROE RGNL (MLU)

RNP APCH - GPS.		MISSED APPROACH: Climb to 3000 direct ZUNTU and on track 319° to FLESH and hold.	
Rwy 32 helicopter visibility reduction below 3/4 SM NA. For uncompensated Baro-VNAV systems, procedure NA below -5°C or above 54°C. Circling Rwy 14 NA at night.			

ATIS 125.05	MONROE APP CON * 118.15 290.475	MONROE TOWER * 118.9 (CTAF) 257.8	GND CON 121.9	CLNC DEL 121.65	UNICOM 122.95
-----------------------	---	---	-------------------------	---------------------------	-------------------------



3000	ZUNTU	tr 319°	FLESH	WISUT	4 NM Holding Pattern
			YICUG 1800		
	XEHPO 1.4 NM to RW32		1800		
	RW32		580		
	1.4 NM	3.8 NM	6.8 NM		
				6000	3100
				137°	← 317°
				GP 3.00°	TCH 53
CATEGORY	A	B	C	D	
LPV DA		326-1	250 (300-1)		
LNVA/VNAV DA		356-1	280 (300-1)		
LNVA MDA	460-1	384 (400-1)	460-1½ 384 (400-1½)		
C CIRCLING	540-1 461 (500-1)	580-1 501 (600-1)	740-1¾ 661 (700-1¾)	1160-3 1081 (1100-3)	

SC-4, 22 FEB 2024 to 21 MAR 2024

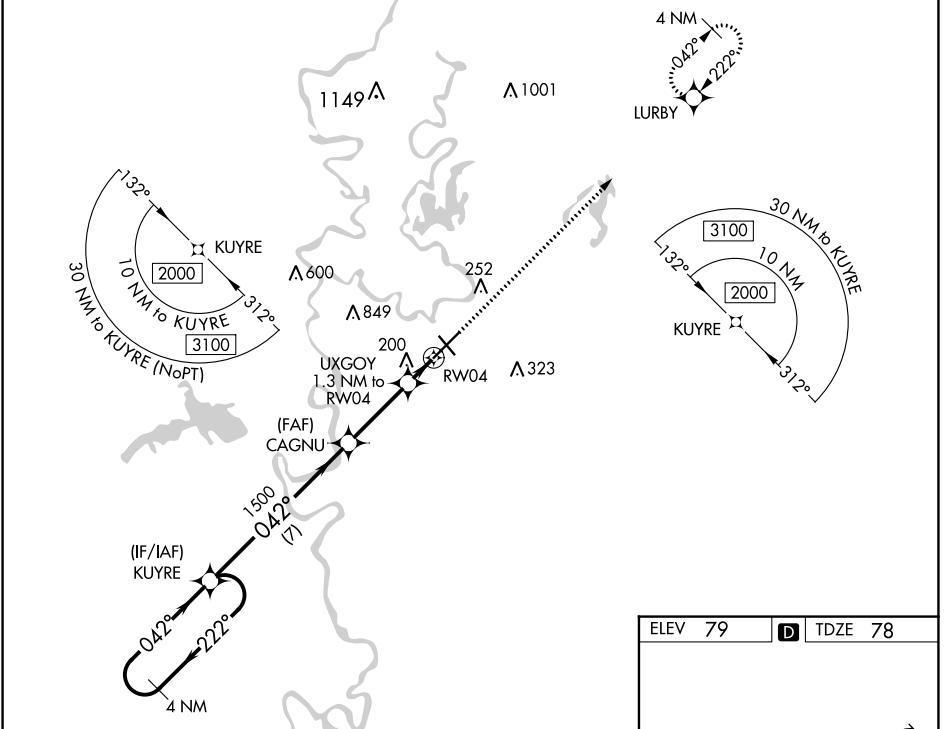
SC-4, 22 FEB 2024 to 21 MAR 2024

WAAS CH 56410 W04A	APP CRS 042°	Rwy Idg 7504 TDZE 78 Apt Elev 79
--	------------------------	---

RNAV (GPS) RWY 4

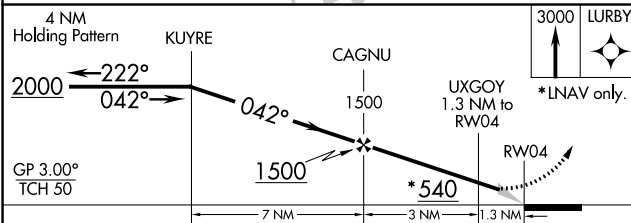
MONROE RGNL (MLU)

RNP APCH.		MALSR MISSED APPROACH: Climb to 3000 direct LURBY and hold.			
⚠ For uncompensated Baro-VNAV systems, LNAV/VNAV NA below -15°C or above 54°C. For inop ALS, increase LNAV/VNAV all Cats visibility to RVR 4500. Circling ASR Rwy 14 NA at night. ** RVR 1800 authorized with use of FD or AP or HUD to DA.					
ATIS 125.05	MONROE APP CON * 118.15 290.475	MONROE TOWER * 118.9 (CTAF) 0 257.8	GND CON 121.9	CLNC DEL 121.65	UNICOM 122.95



SC-4, 22 FEB 2024 to 21 MAR 2024

SC-4, 22 FEB 2024 to 21 MAR 2024



ELEV 79	D	TDZE 78
---------	---	---------

TWR 209

REIL Rws 14 and 32
MIRL Rwy 14-32
HIRL Rwy 4-22

GP 3.00° TCH 50	7 NM	3 NM	1.3 NM	
CATEGORY	A	B	C	D
LPV DA **		278/24	200 (200-½)	
LNAV/VNAV DA		383/24	305 (400-½)	
LNAV MDA	460/24	382 (400-½)	460/35	382 (400-¾)
CIRCLING	580-1	501 (600-1)	740-1¾ 661 (700-1¾)	1160-3 1081 (1100-3)

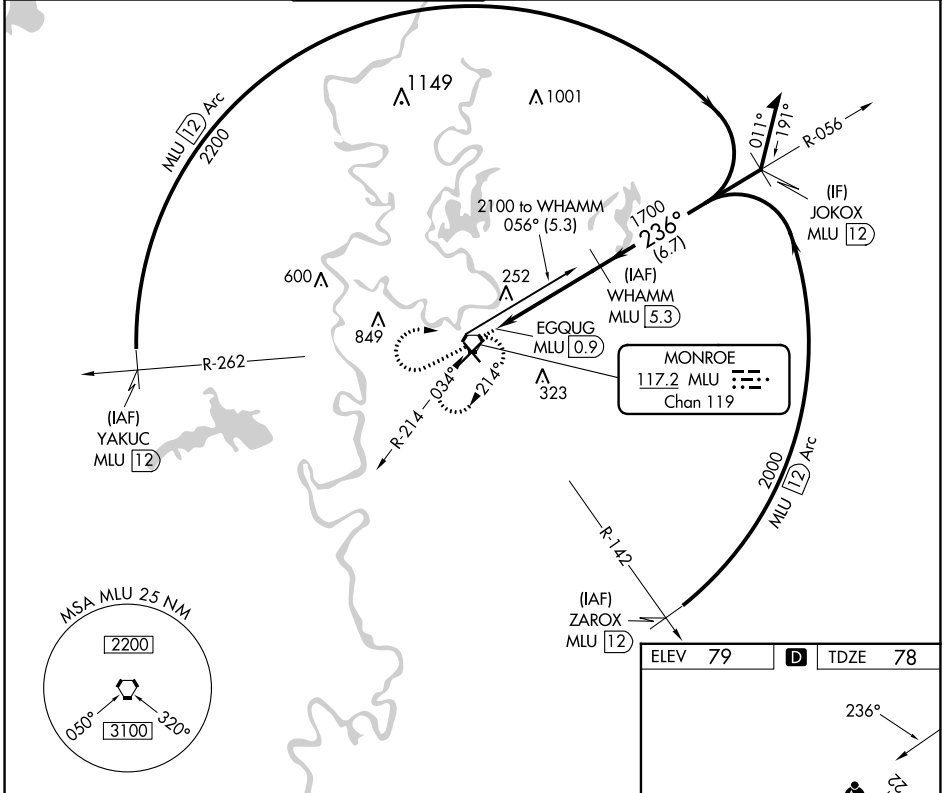
VORTAC MLU 117.2 Chan 119	APP CRS 236°	Rwy Idg 7504 TDZE 78 Apt Elev 79
---	------------------------	---

VOR RWY 22

MONROE RGNL (MLU)

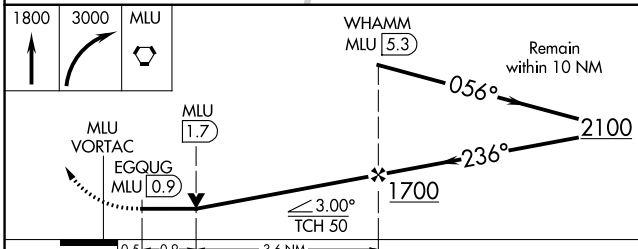
DME required. ⚠ Circling Rwy 14 NA at night. Rwy 22 helicopter visibility reduction below 3/4 SM NA. For inop ALS, increase S-22 Cat A/B ASR visibility to 1 SM, and Cat C/D to 1 1/2 SM.	MALSR ⚠	MISSED APPROACH: Climb to 1800 then climbing right turn to 3000 direct MLU VORTAC and hold, continue climb-in-hold to 3000.
--	------------	---

ATIS 125.05	MONROE APP CON ★ 118.15 290.475	MONROE TOWER ★ 118.9 (CTAF) 257.8	GND CON 121.9	CLNC DEL 121.65	UNICOM 122.95
-----------------------	---	--	-------------------------	---------------------------	-------------------------

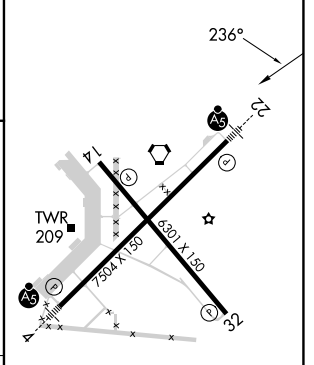


SC-4, 22 FEB 2024 to 21 MAR 2024

SC-4, 22 FEB 2024 to 21 MAR 2024



ELEV 79	D	TDZE 78
---------	---	---------



CATEGORY	A	B	C	D
S-22	560-3/4 482 (500-3/4)		560-1 482 (500-1)	
CIRCLING	560-1 481 (500-1)	580-1 501 (600-1)	740-1 3/4 661 (700-1 3/4)	1160-3 1081 (1100-3)

REIL Rwy 14 and 32
MIRL Rwy 14-32
HIRL Rwy 4-22

VORTAC MLU 117.2 Chan 119	APP CRS 328°	Rwy Idg TDZE Apt Elev	6301 76 79
---	------------------------	-----------------------------	---------------------------------------

VOR RWY 32

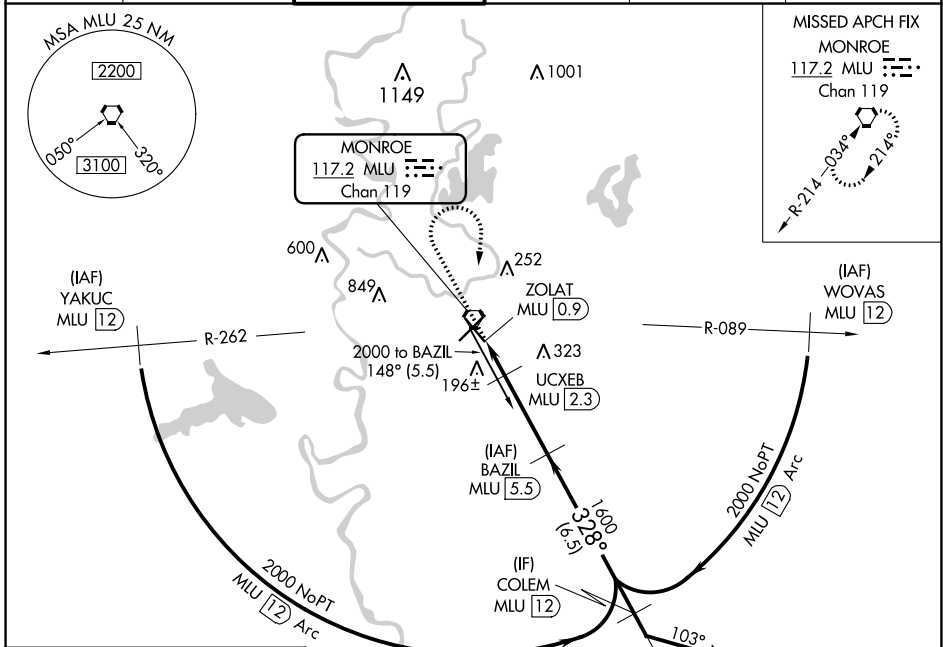
MONROE RGNL (MLU)

DME required.

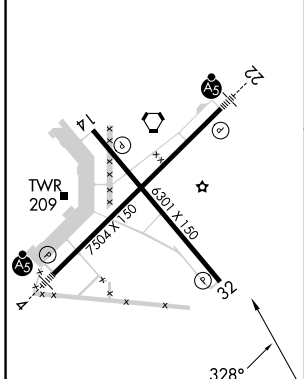
ASR Rwy 32 helicopter visibility reduction below 3/4 SM NA.
Circling Rwy 14 NA at night.

MISSED APPROACH: Climb to 1800 then climbing right turn to 3000 direct MLU VORTAC and hold, continue climb-in-hold to 3000.

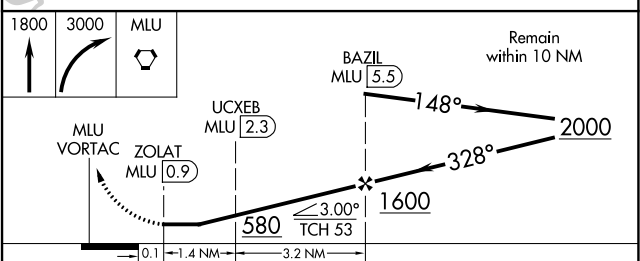
ATIS 125.05	MONROE APP CON * 118.15 290.475	MONROE TOWER * 118.9 (CTAF) 0 257.8	GND CON 121.9	CLNC DEL 121.65	UNICOM 122.95
-----------------------	---	---	-------------------------	---------------------------	-------------------------



ELEV 79	D TDZE 76
---------	------------------



REIL Rws 14 and 32
MIRL Rwy 14-32
HIRL Rwy 4-22



CATEGORY	A	B	C	D
S-32	460-1	384 (400-1)	460-1 1/8	384 (400-1 1/8)
C CIRCLING	540-1 461 (500-1)	580-1 501 (600-1)	740-1 3/4 661 (700-1 3/4)	1160-3 1081 (1100-3)

SC-4, 22 FEB 2024 to 21 MAR 2024

SC-4, 22 FEB 2024 to 21 MAR 2024

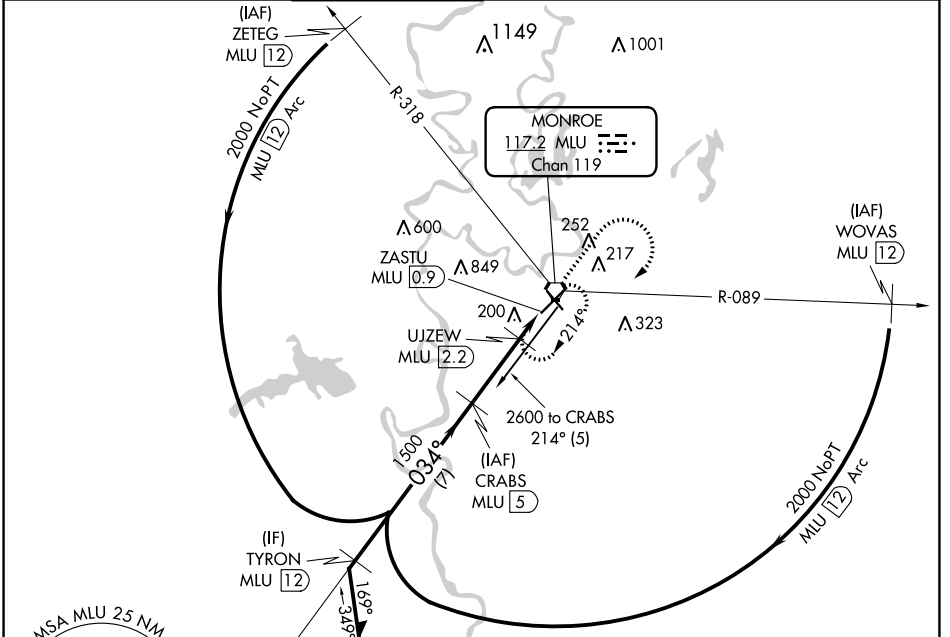
VORTAC MLU 117.2 Chan 119	APP CRS 034°	Rwy Idg 7504 TDZE 78 Apt Elev 79
---	------------------------	---

VOR/DME RWY 4

MONROE RGNL (MLU)

⚠ Circling to Rwy 14 NA at night.	MALSR 	MISSED APPROACH: Climb to 1800 then climbing right turn to 3000 direct MLU VORTAC and hold, continue climb-in-hold to 3000.
--	------------------	--

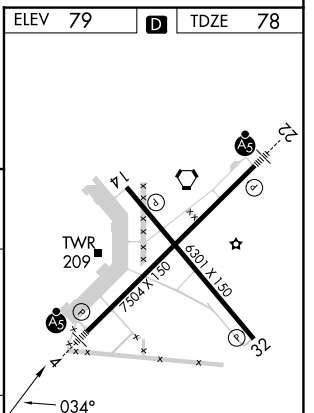
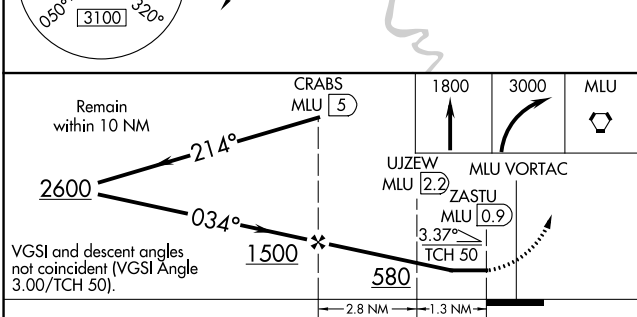
ATIS 125.05	MONROE APP CON★ 118.15 290.475	MONROE TOWER★ 118.9 (CTAF) 257.8	GND CON 121.9	CLNC DEL 121.65	UNICOM 122.95
-----------------------	--	--	-------------------------	---------------------------	-------------------------



SC-4, 22 FEB 2024 to 21 MAR 2024

SC-4, 22 FEB 2024 to 21 MAR 2024

ELEV 79	D	TDZE 78
---------	----------	---------



CATEGORY	A	B	C	D
S-4	460/24	382 (400-1/2)	460/40	382 (400-3/4)
C CIRCLING	580-1 501 (600-1)	620-1 541 (600-1)	740-1 3/4 661 (700-1 3/4)	1160-3 1081 (1100-3)

REIL Rws 14 and 32
MIRL Rwy 14-32 **⓪**
HIRL Rwy 4-22 **⓪**