

NDB UMB <b>380</b>	APP CRS <b>276°</b>	Rwy Idg TDZE Apt Elev	<b>5424</b> <b>379</b> <b>385</b>
-----------------------	------------------------	-----------------------------	---

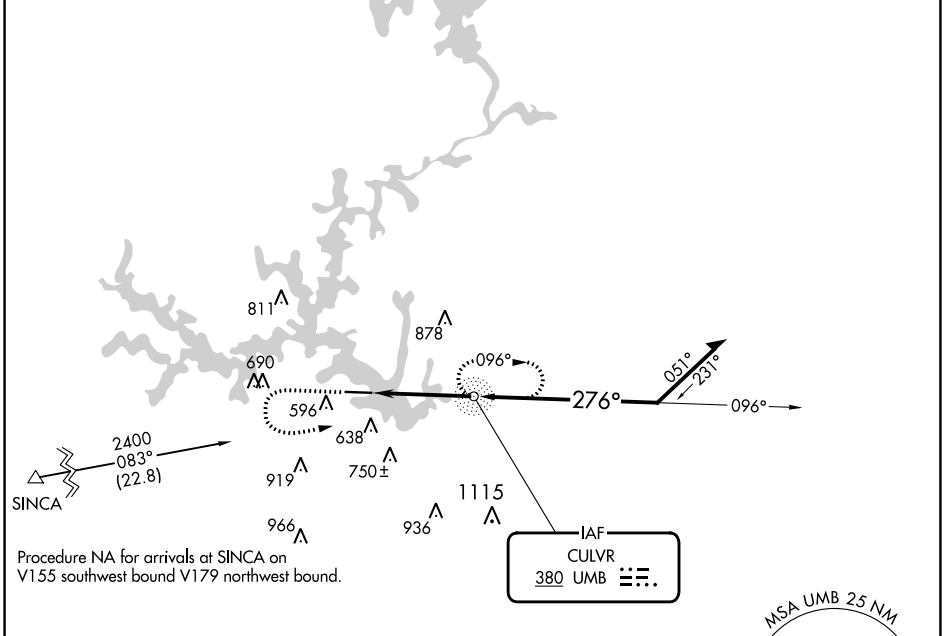
# NDB RWY 28

BALDWIN COUNTY RGNL (MLJ)

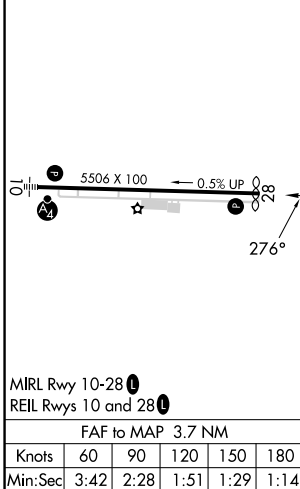
**⚠** Rwy 28 helicopter visibility reduction below  $\frac{3}{4}$  SM NA.

**⚠** MISSED APPROACH: Climb to 1400 then climbing left turn to 2400 direct UMB NDB and hold, continue climb-in-hold to 2400.

AWOS-3 <b>120.925</b>	ATLANTA APP CON ★ <b>124.2 279.6</b>	UNICOM <b>122.975 (CTAF) 0</b>
--------------------------	---	-----------------------------------



ELEV 385	TDZE 379
----------	----------



CATEGORY	A	B	C	D
S-28	940-1	561 (600-1)	940-1 $\frac{5}{8}$	561 (600-1 $\frac{5}{8}$ )
<b>C</b> CIRCLING	940-1	555 (600-1)	1080-2 695 (700-2)	1280-3 895 (900-3)

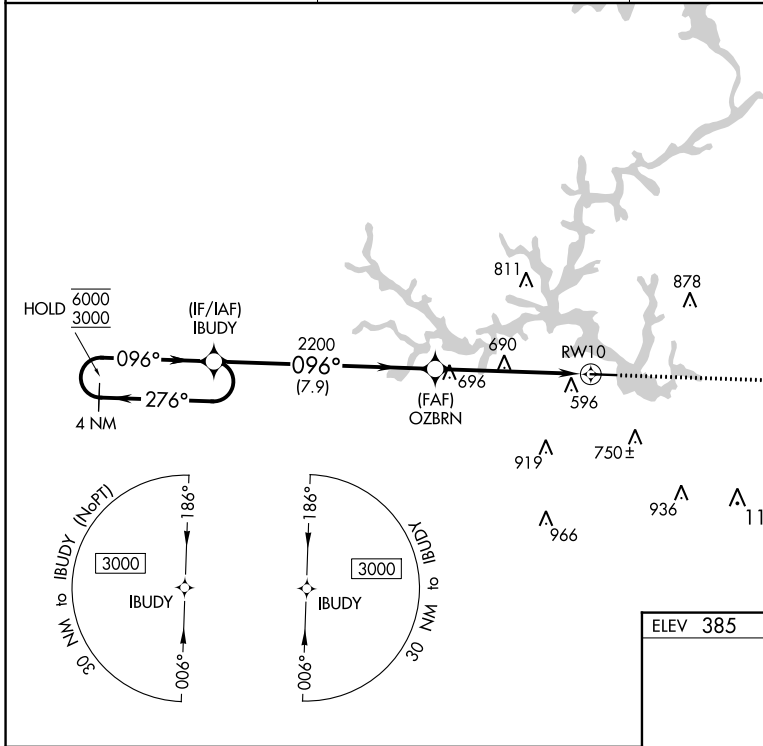
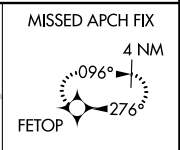
APP CRS	Rwy Idg	<b>5506</b>
<b>096°</b>	TDZE	<b>385</b>
	Apt Elev	<b>385</b>

# RNAV (GPS) RWY 10

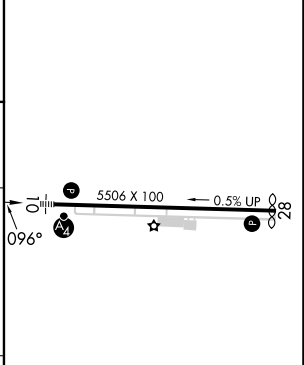
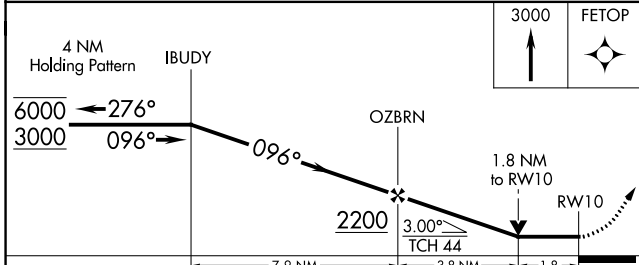
BALDWIN COUNTY RGNL (MLJ)

RNP APCH - GPS.	MALSF	MISSED APPROACH: Climb to 3000 direct FETOP and hold.
  Rwy 10 helicopter visibility reduction below 3/4 SM NA.		

AWOS-3 <b>120.925</b>	ATLANTA APP CON ★ <b>124.2 279.6</b>	UNICOM <b>122.975 (CTAF)</b>
--------------------------	---	---------------------------------



ELEV 385	TDZE 385
----------	----------



CATEGORY	A	B	C	D
LNVA MDA	1000-1	615 (700-1)	1000-1½	615 (700-1½)
CIRCLING	1000-1	615 (700-1)	1080-2 695 (700-2)	1280-3 895 (900-3)

MIRL Rwy 10-28  
REIL Rwy 10 and 28

SE-4, 22 FEB 2024 to 21 MAR 2024

SE-4, 22 FEB 2024 to 21 MAR 2024

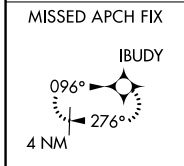
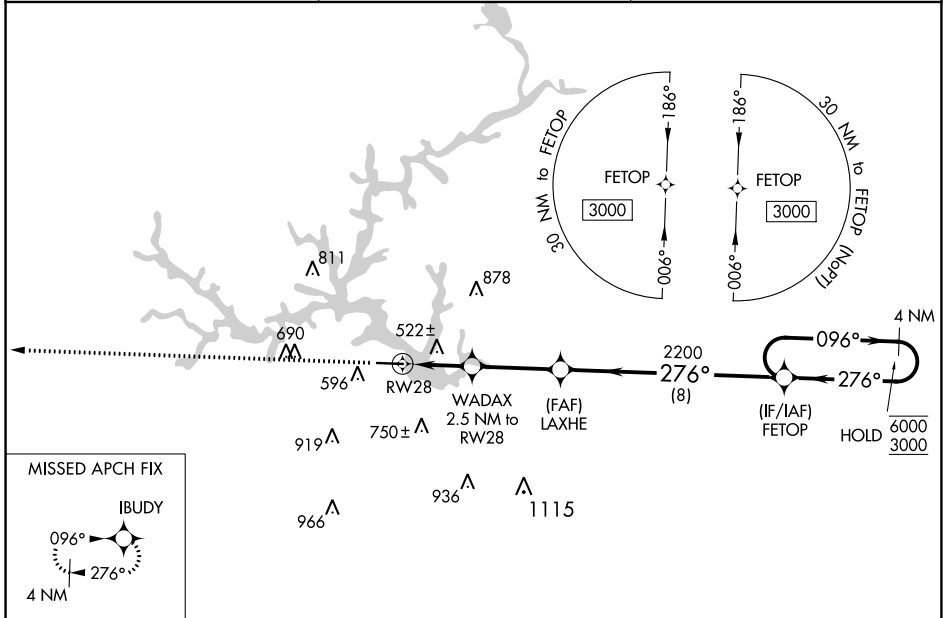
WAAS CH <b>82318</b>	APP CRS <b>276°</b>	Rwy Idg TDZE Apt Elev	<b>5424</b> <b>379</b> <b>385</b>
-------------------------	------------------------	-----------------------------	---

# RNAV (GPS) RWY 28

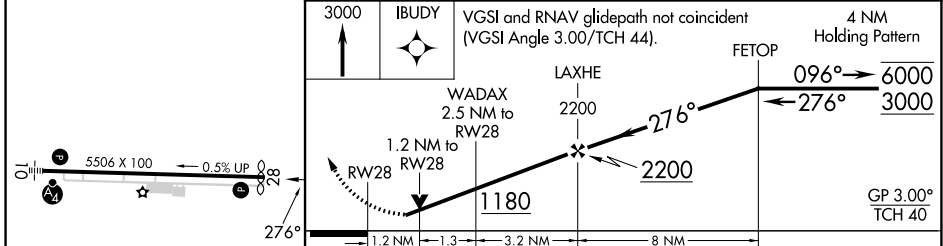
BALDWIN COUNTY RGNL (MLJ)

RNP APCH-GPS.		MISSED APPROACH: Climb to 3000 direct IBUDY and hold.
<p><b>▼</b> <b>▲</b> Rwy 28 helicopter visibility reduction below 3/4 SM NA. For uncompensated Baro-VNAV systems, LNAV/VNAV NA below -15°C or above 54°C.</p>		

AWOS-3 <b>120.925</b>	ATLANTA APP CON ★ <b>124.2 279.6</b>	UNICOM <b>122.975 (CTAF) 0</b>
--------------------------	---	-----------------------------------



ELEV 385	TDZE 379
----------	----------



CATEGORY	A	B	C	D
LPV DA	680-1 301 (300-1)			
LNAV/VNAV DA	830-1 3/8 451 (500-1 3/8)			
LNAV MDA	780-1 401 (400-1)	780-1 1/8 401 (400-1 1/8)		
<b>C</b> CIRCLING	900-1 515 (600-1)	940-1 555 (600-1)	1080-2 695 (700-2)	1280-3 895 (900-3)

MIRL Rwy 10-28 0  
REIL Rwy 10 and 28 0

SE-4, 22 FEB 2024 to 21 MAR 2024

SE-4, 22 FEB 2024 to 21 MAR 2024