

AUTMN SIX DEPARTURE (RNAV)
(AUTMNM6.AUTMNM) 31DECC20

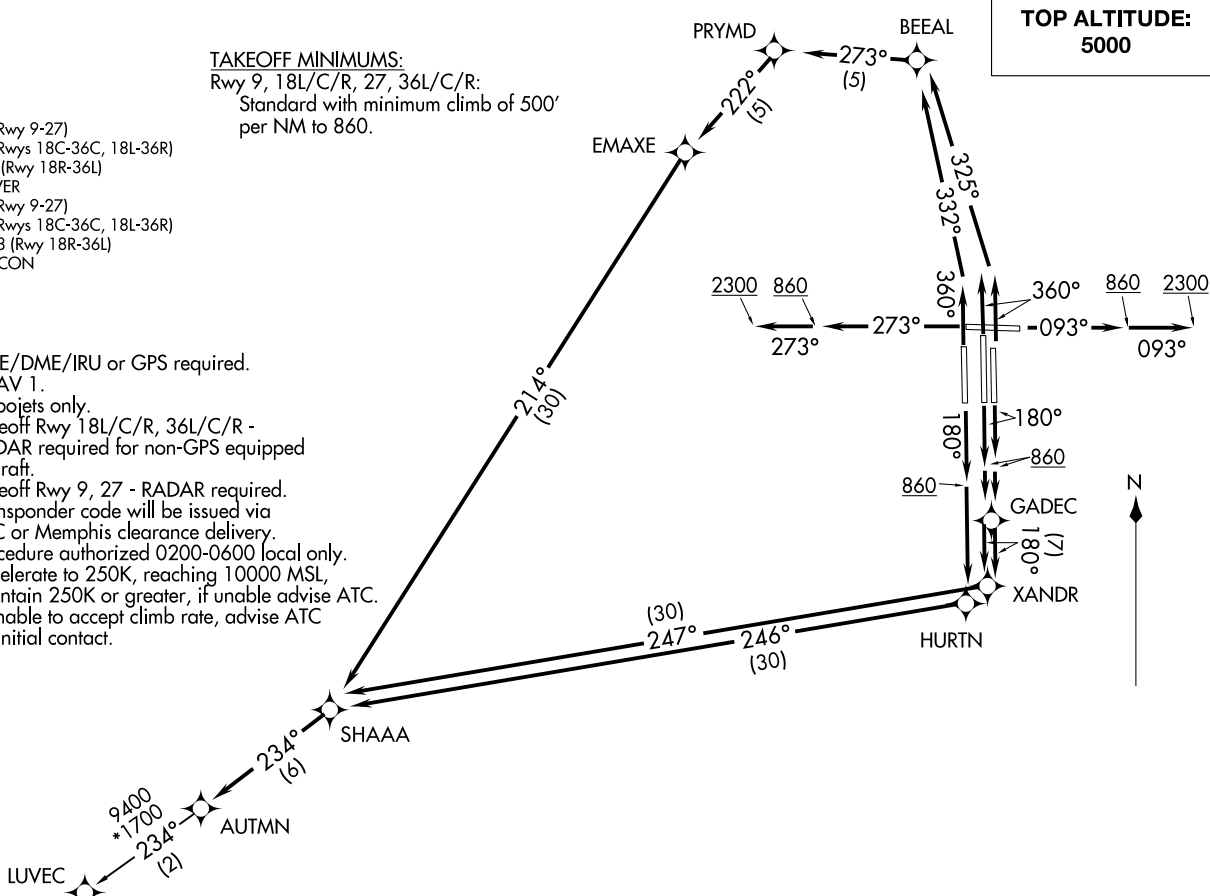
D-ATIS
127.75
CLNC DEL
125.2
CPDLC
GND CON
121.0 379.2 (Rwy 9-27)
121.9 379.2 (Rwys 18C-36C, 18L-36R)
121.65 379.2 (Rwy 18R-36L)
MEMPHIS TOWER
118.3 257.8 (Rwy 9-27)
119.7 257.8 (Rwys 18C-36C, 18L-36R)
128.425 257.8 (Rwy 18R-36L)
MEMPHIS DEP CON
124.65 284.7

TAKEOFF MINIMUMS:
Rwy 9, 18L/C/R, 27, 36L/C/R:
Standard with minimum climb of 500'
per NM to 860.

- NOTE: DME/DME/IRU or GPS required.
- NOTE: RNAV 1.
- NOTE: Turbojets only.
- NOTE: Takeoff Rwy 18L/C/R, 36L/C/R - RADAR required for non-GPS equipped aircraft.
- NOTE: Takeoff Rwy 9, 27 - RADAR required.
- NOTE: Transponder code will be issued via PDC or Memphis clearance delivery.
- NOTE: Procedure authorized 0200-0600 local only.
- NOTE: Accelerate to 250K, reaching 10000 MSL, maintain 250K or greater, if unable advise ATC.
- NOTE: If unable to accept climb rate, advise ATC on initial contact.

(NARRATIVE ON FOLLOWING PAGE)

**TOP ALTITUDE:
5000**



NOTE: Chart not to scale.

(AUTMNM6.AUTMNM) 20366
AUTMN SIX DEPARTURE (RNAV)

AL-253 (FAA)

MEMPHIS INTL (MEMM)
MEMPHIS, TENNESSEE

MEMPHIS, TENNESSEE
MEMPHIS INTL (MEMM)



DEPARTURE ROUTE DESCRIPTION

TAKEOFF RUNWAY 9: Climb on heading 093° to 860, then continue climb to 2300 on heading 093° or as assigned by ATC for vectors to SHAAA, then on depicted route to AUTMN, thence....

TAKEOFF RUNWAYS 18L/C: Climb on heading 180° to 860, then direct GADEC, then on depicted route to AUTMN, thence....

TAKEOFF RUNWAY 18R: Climb on heading 180° to 860, then direct HURTN, then on depicted route to AUTMN, thence....

TAKEOFF RUNWAY 27: Climb on heading 273° to 860, then continue climb to 2300 on heading 273° or as assigned by ATC for vectors to SHAAA, then on depicted route to AUTMN, thence....

TAKEOFF RUNWAY 36L: Climb on heading 360° to intercept course 332° to BEEAL, then on depicted route to AUTMN, thence....

TAKEOFF RUNWAYS 36C/R: Climb on heading 360° to intercept course 325° to BEEAL, then on depicted route to AUTMN, thence....

....maintain 5000. Expect clearance to filed altitude within ten (10) minutes after departure.

LUVEC TRANSITION (AUTMN6.LUVEC):

SE-1, 22 FEB 2024 to 21 MAR 2024

SE-1, 22 FEB 2024 to 21 MAR 2024

AZONE SEVEN DEPARTURE (RNAV)
(AZONE7.AZONE) 31DEC20

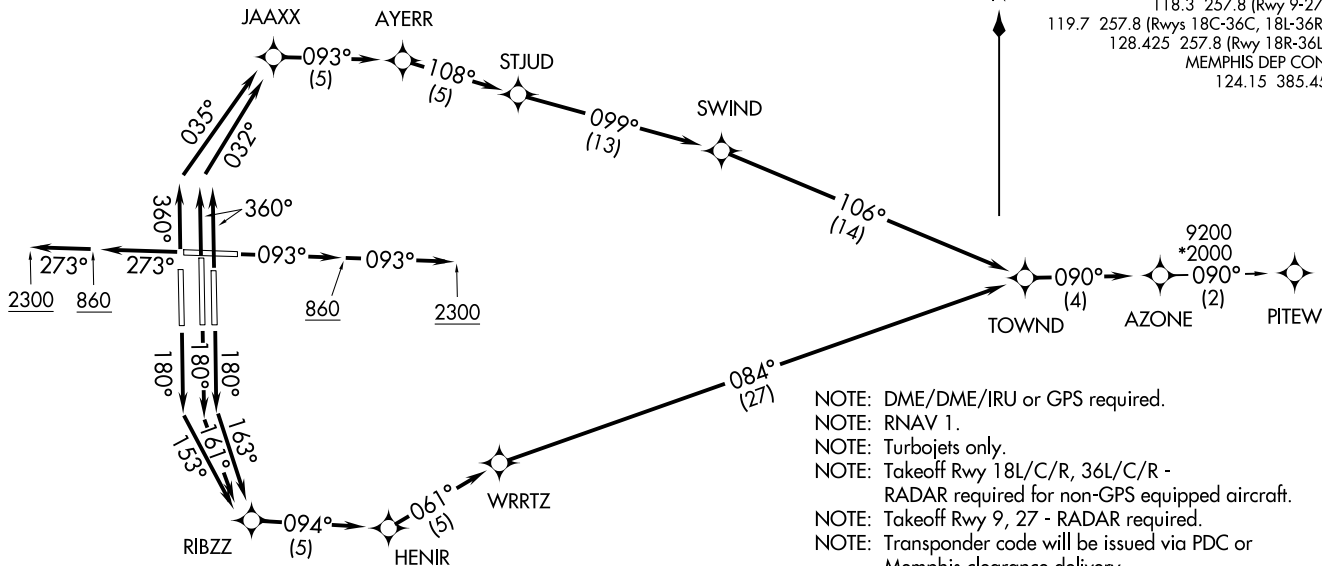
(AZONE7.AZONE) 20366
AZONE SEVEN DEPARTURE (RNAV)

MEMPHIS INTL (MEM)
MEMPHIS, TENNESSEE

AL-253 (FAA)

D-ATIS
127.75
CLNC DEL
125.2
CPDLC
GND CON
121.0 379.2 (Rwy 9-27)
121.9 379.2 (Rwys 18C-36C, 18L-36R)
121.65 379.2 (Rwy 18R-36L)
MEMPHIS TOWER
118.3 257.8 (Rwy 9-27)
119.7 257.8 (Rwys 18C-36C, 18L-36R)
128.425 257.8 (Rwy 18R-36L)
MEMPHIS DEP CON
124.15 385.45

TOP ALTITUDE:
5000



TAKEOFF MINIMUMS:

Rwy 9, 18L/C/R, 27, 36L/C/R: Standard with minimum climb of 500' per NM to 860.

NOTE: Chart not to scale.

(NARRATIVE ON FOLLOWING PAGE)

- NOTE: DME/DME/IRU or GPS required.
- NOTE: RNAV 1.
- NOTE: Turbojets only.
- NOTE: Takeoff Rwy 18L/C/R, 36L/C/R - RADAR required for non-GPS equipped aircraft.
- NOTE: Takeoff Rwy 9, 27 - RADAR required.
- NOTE: Transponder code will be issued via PDC or Memphis clearance delivery.
- NOTE: Accelerate to 250K, reaching 10000 MSL, maintain 250K or greater, if unable advise ATC.
- NOTE: Procedure not authorized when Columbus 4 MOA active.
- NOTE: If unable to accept climb rate, advise ATC on initial contact.

MEMPHIS, TENNESSEE
MEMPHIS INTL (MEM)



DEPARTURE ROUTE DESCRIPTION

TAKEOFF RUNWAY 9: Climb on heading 093° to 860, then continue climb to 2300 on heading 093° or as assigned by ATC, for vectors to TOWND, then on depicted route to AZONE, thence....

TAKEOFF RUNWAY 18C: Climb on heading 180° to intercept course 161° to RIBZZ, then on depicted route to AZONE, thence....

TAKEOFF RUNWAY 18L: Climb on heading 180° to intercept course 163° to RIBZZ, then on depicted route to AZONE, thence....

TAKEOFF RUNWAY 18R: Climb on heading 180° to intercept course 153° to RIBZZ, then on depicted route to AZONE, thence....

TAKEOFF RUNWAY 27: Climb on heading 273° to 860, then continue climb to 2300 on heading 273° or as assigned by ATC, for vectors to TOWND, then on depicted route to AZONE, thence....

TAKEOFF RUNWAY 36L: Climb on heading 360° to intercept course 035° to JAAXX, then on depicted route to AZONE, thence....

TAKEOFF RUNWAYS 36C/R: Climb on heading 360° to intercept course 032° to JAAXX, then on depicted route to AZONE, thence....

....maintain 5000. Expect clearance to filed altitude within ten (10) minutes after departure.

PITW TRANSITION (AZONE7.PITW):

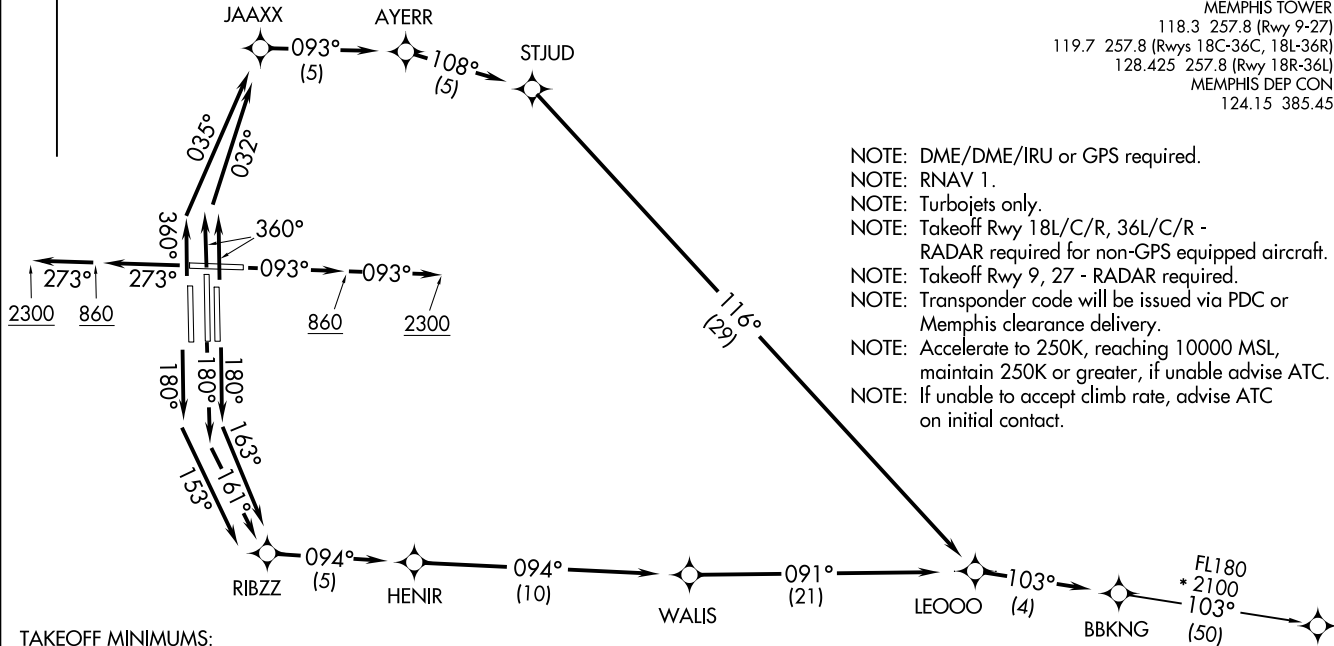
SE-1, 22 FEB 2024 to 21 MAR 2024

SE-1, 22 FEB 2024 to 21 MAR 2024

BBKNG SEVEN DEPARTURE (RNAV)
(BBKNG7.BBKNG) 31DEC20

MEMPHIS, TENNESSEE
MEMPHIS INTL (MEM)

TOP ALTITUDE:
5000



TAKEOFF MINIMUMS:

Rwy 9, 18L/C/R, 27, 36L/C/R: Standard with minimum climb of 500' per NM to 860.

NOTE: Chart not to scale.

(NARRATIVE ON FOLLOWING PAGE)

D-ATIS 127.75
 CLNC DEL 125.2
 CPDLC
 GND CON 121.0 379.2 (Rwy 9-27)
 121.9 379.2 (Rwys 18C-36C, 18L-36R)
 121.65 379.2 (Rwy 18R-36L)
 MEMPHIS TOWER 118.3 257.8 (Rwy 9-27)
 119.7 257.8 (Rwys 18C-36C, 18L-36R)
 128.425 257.8 (Rwy 18R-36L)
 MEMPHIS DEP CON 124.15 385.45

NOTE: DME/DME/IRU or GPS required.

NOTE: RNAV 1.

NOTE: Turbojets only.

NOTE: Takeoff Rwy 18L/C/R, 36L/C/R - RADAR required for non-GPS equipped aircraft.

NOTE: Takeoff Rwy 9, 27 - RADAR required.

NOTE: Transponder code will be issued via PDC or Memphis clearance delivery.

NOTE: Accelerate to 250K, reaching 10000 MSL, maintain 250K or greater, if unable advise ATC.

NOTE: If unable to accept climb rate, advise ATC on initial contact.

(BBKNG7.BBKNG) 22195

AL-253 (FAA)

MEMPHIS INTL (MEM)
MEMPHIS, TENNESSEE

BBKNG SEVEN DEPARTURE (RNAV)



DEPARTURE ROUTE DESCRIPTION

TAKEOFF RUNWAY 9: Climb on heading 093° to 860, then continue climb to 2300 on heading 093° or assigned by ATC, for vectors to LEOOO, then on depicted route to BBKNG, thence....

TAKEOFF RUNWAY 18C: Climb on heading 180° to intercept course 161° to RIBZZ, then on depicted route to BBKNG, thence....

TAKEOFF RUNWAY 18L: Climb on heading 180° to intercept course 163° to RIBZZ, then on depicted route to BBKNG, thence....

TAKEOFF RUNWAY 18R: Climb on heading 180° to intercept course 153° to RIBZZ, then on depicted route to BBKNG, thence....

TAKEOFF RUNWAY 27: Climb on heading 273° to 860, then continue climb to 2300 on heading 273° or assigned by ATC, for vectors to LEOOO, then on depicted route to BBKNG, thence....

TAKEOFF RUNWAY 36L: Climb on heading 360° to intercept course 035° to JAAXX, then on depicted route to BBKNG, thence....

TAKEOFF RUNWAYS 36C/R: Climb on heading 360° to intercept course 032° to JAAXX, then on depicted route to BBKNG, thence....

...maintain 5000. Expect clearance to filed altitude within ten (10) minutes after departure.

KERMI TRANSITION (BBKNG7.KERMI):

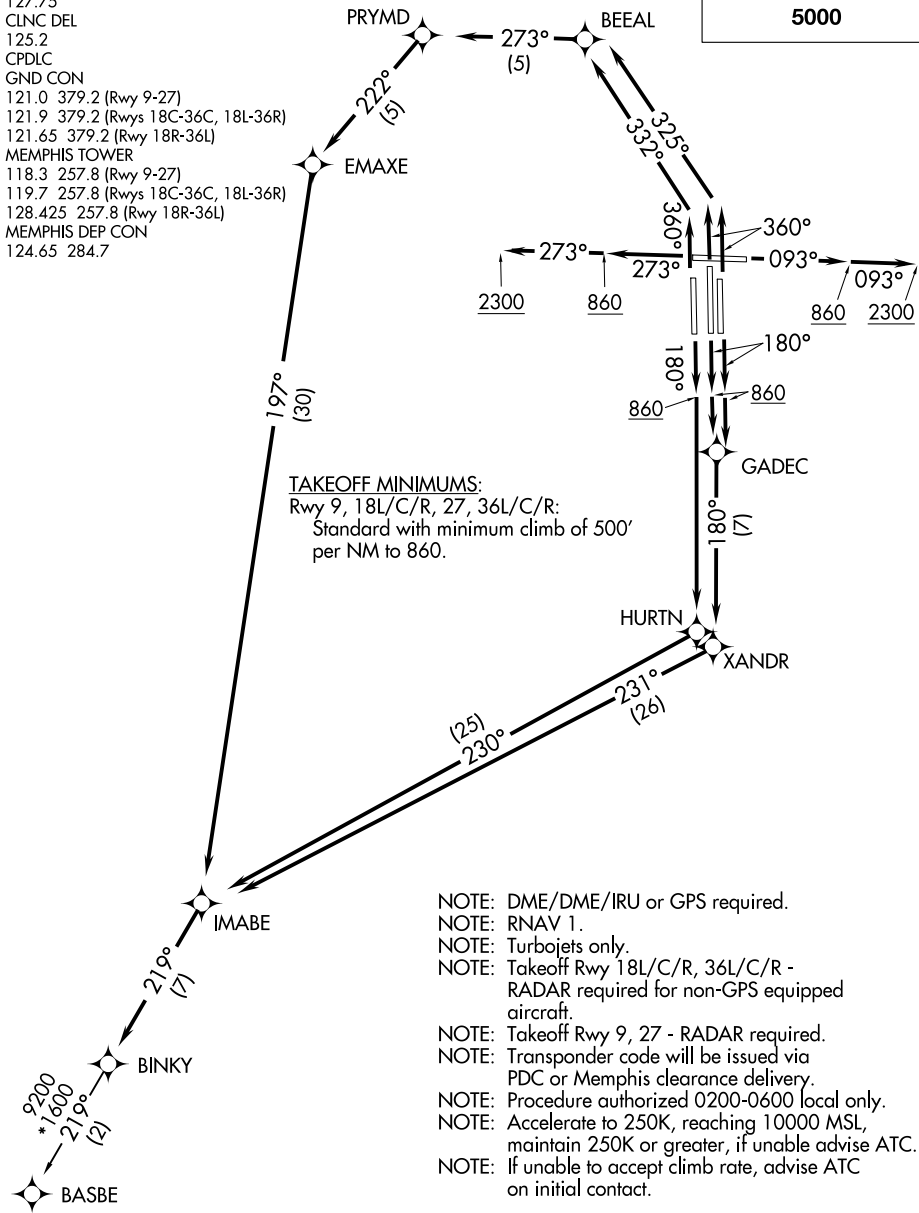
SE-1, 22 FEB 2024 to 21 MAR 2024

SE-1, 22 FEB 2024 to 21 MAR 2024

BINKY SIX DEPARTURE (RNAV)

D-ATIS
127.75
CLNC DEL
125.2
CPDLC
GND CON
121.0 379.2 (Rwy 9-27)
121.9 379.2 (Rwys 18C-36C, 18L-36R)
121.65 379.2 (Rwy 18R-36L)
MEMPHIS TOWER
118.3 257.8 (Rwy 9-27)
119.7 257.8 (Rwys 18C-36C, 18L-36R)
128.425 257.8 (Rwy 18R-36L)
MEMPHIS DEP CON
124.65 284.7

**TOP ALTITUDE:
5000**



TAKEOFF MINIMUMS:
Rwy 9, 18L/C/R, 27, 36L/C/R:
Standard with minimum climb of 500' per NM to 860.

- NOTE: DME/DME/IRU or GPS required.
- NOTE: RNAV 1.
- NOTE: Turbojets only.
- NOTE: Takeoff Rwy 18L/C/R, 36L/C/R - RADAR required for non-GPS equipped aircraft.
- NOTE: Takeoff Rwy 9, 27 - RADAR required.
- NOTE: Transponder code will be issued via PDC or Memphis clearance delivery.
- NOTE: Procedure authorized 0200-0600 local only.
- NOTE: Accelerate to 250K, reaching 10000 MSL, maintain 250K or greater, if unable advise ATC.
- NOTE: If unable to accept climb rate, advise ATC on initial contact.

NOTE: Chart not to scale.

(NARRATIVE ON FOLLOWING PAGE)

SE-1, 22 FEB 2024 to 21 MAR 2024

SE-1, 22 FEB 2024 to 21 MAR 2024

BINKY SIX DEPARTURE (RNAV)



DEPARTURE ROUTE DESCRIPTION

TAKEOFF RUNWAY 9: Climb on heading 093° to 860, then continue climb to 2300 on heading 093° or as assigned by ATC, for vectors to IMABE, then on depicted route to BINKY, thence....

TAKEOFF RUNWAYS 18L/C: Climb on heading 180° to 860, then direct GADEC, then on depicted route to BINKY, thence....

TAKEOFF RUNWAY 18R: Climb on heading 180° to 860, then direct HURTN, then on depicted route to BINKY, thence....

TAKEOFF RUNWAY 27: Climb on heading 273° to 860, then continue climb to 2300 on heading 273° or as assigned by ATC for vectors to IMABE, then on depicted route to BINKY, thence....

TAKEOFF RUNWAY 36L: Climb on heading 360° to intercept course 332° to BEEAL, then on depicted route to BINKY, thence....

TAKEOFF RUNWAYS 36C/R: Climb on heading 360° to intercept course 325° to BEEAL, then on depicted route to BINKY, thence....

....maintain 5000. Expect clearance to filed altitude within ten (10) minutes after departure.

BASBE TRANSITION (BINKY6.BASBE):

SE-1, 22 FEB 2024 to 21 MAR 2024

SE-1, 22 FEB 2024 to 21 MAR 2024

CHILDR FIVE DEPARTURE (RNAV)
(CHILDR5, CHILDR) 31 DEC 20

D-ATIS
127.75
CLNC DEL
125.2
CPDLC
GND CON
121.0 379.2 (Rwy 9-27)
121.9 379.2 (Rwys 18C-36C,
18L-36R)
121.65 379.2 (Rwy 18R-36L)
MEMPHIS TOWER
118.3 257.8 (Rwy 9-27)
119.7 257.8 (Rwys 18C-36C,
18L-36R)
128.425 257.8 (Rwy 18R-36L)
MEMPHIS DEP CON
124.65 284.7

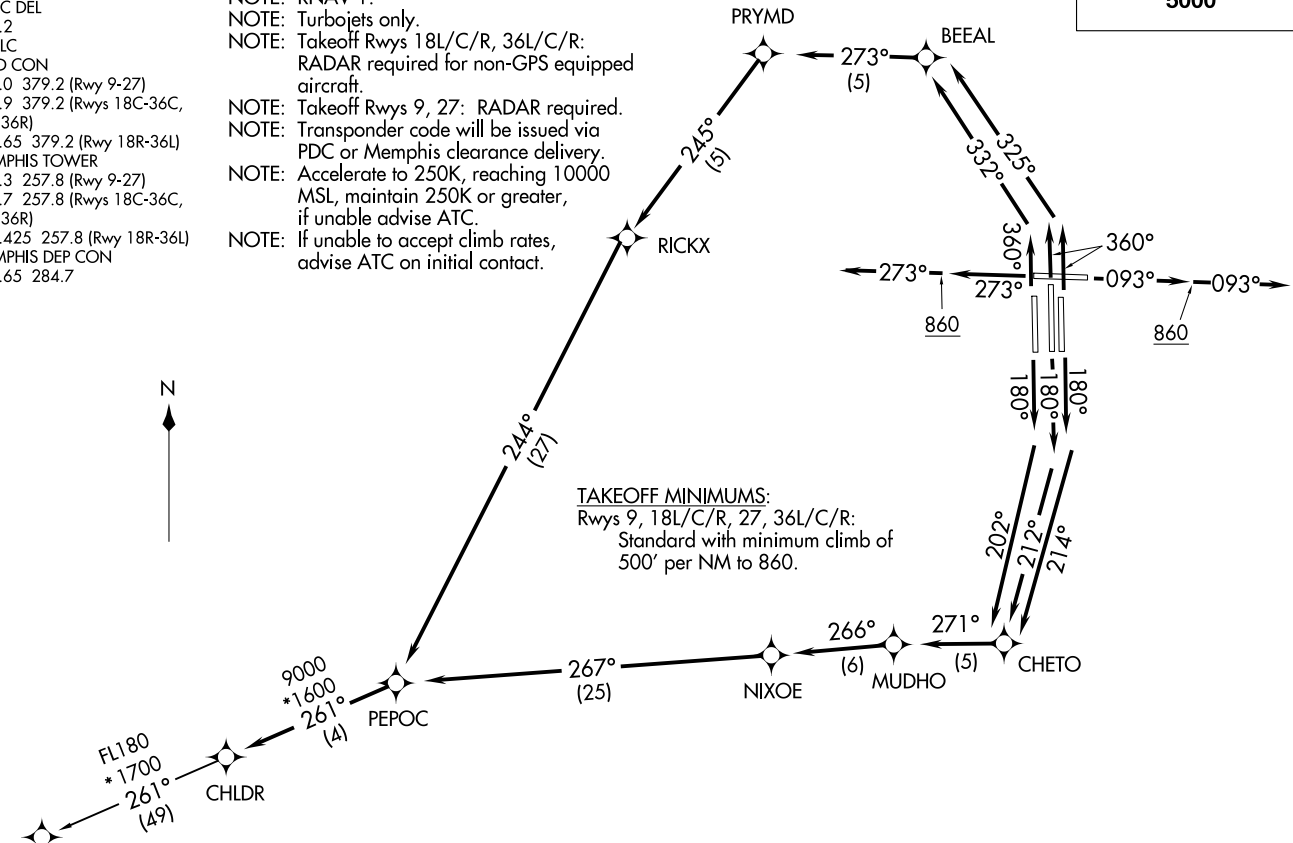
NOTE: DME/DME/IRU or GPS required.
NOTE: RNAV 1.
NOTE: Turbojets only.
NOTE: Takeoff Rwys 18L/C/R, 36L/C/R:
RADAR required for non-GPS equipped
aircraft.
NOTE: Takeoff Rwys 9, 27: RADAR required.
NOTE: Transponder code will be issued via
PDC or Memphis clearance delivery.
NOTE: Accelerate to 250K, reaching 10000
MSL, maintain 250K or greater,
if unable advise ATC.
NOTE: If unable to accept climb rates,
advise ATC on initial contact.

TOP ALTITUDE:
5000

(CHILDR5, CHILDR) 20366
CHILDR FIVE DEPARTURE (RNAV)

AL-233 (FAA)

MEMPHIS INTL (METM)
MEMPHIS, TENNESSEE



(NARRATIVE ON FOLLOWING PAGE)

NOTE: Chart not to scale.

MEMPHIS, TENNESSEE
MEMPHIS INTL (METM)



DEPARTURE ROUTE DESCRIPTION

TAKEOFF RUNWAY 9: Climb on heading 093° to 860, then continue climb on heading 093°, expect vectors to PEPOC, then on depicted route to CHLDR, thence....

TAKEOFF RUNWAY 18C: Climb on heading 180° to intercept course 212° to CHETO, then on depicted route to CHLDR, thence....

TAKEOFF RUNWAY 18L: Climb on heading 180° to intercept course 214° to CHETO, then on depicted route to CHLDR, thence....

TAKEOFF RUNWAY 18R: Climb on heading 180° to intercept course 202° to CHETO, then on depicted route to CHLDR, thence....

TAKEOFF RUNWAY 27: Climb on heading 273° to 860, then continue climb on heading 273°, expect vectors to PEPOC, then on depicted route to CHLDR, thence....

TAKEOFF RUNWAY 36L: Climb on heading 360° to intercept course 332° to BEEAL, then on depicted route to CHLDR, thence....

TAKEOFF RUNWAY 36C/R: Climb on heading 360° to intercept course 325° to BEEAL, then on depicted route to CHLDR, thence....

....maintain 5000. Expect clearance to filed altitude within ten (10) minutes after departure.

ANSWA TRANSITION (CHLDR5.ANSWA):

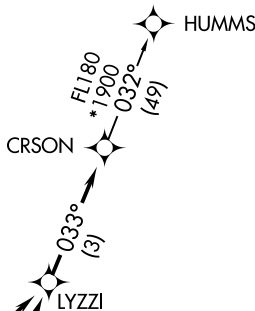
SE-1, 22 FEB 2024 to 21 MAR 2024

SE-1, 22 FEB 2024 to 21 MAR 2024

CRSON SEVEN DEPARTURE (RNAV)

D-ATIS
127.75
CLNC DEL
125.2
CPDLC
GND CON
121.0 379.2 (Rwy 9-27)
121.9 379.2 (Rwys 18C-36C, 18L-36R)
121.65 379.2 (Rwy 18R-36L)
MEMPHIS TOWER
118.3 257.8 (Rwy 9-27)
119.7 257.8 (Rwys 18C-36C, 18L-36R)
128.425 257.8 (Rwy 18R-36L)
MEMPHIS DEP CON
124.15 385.45

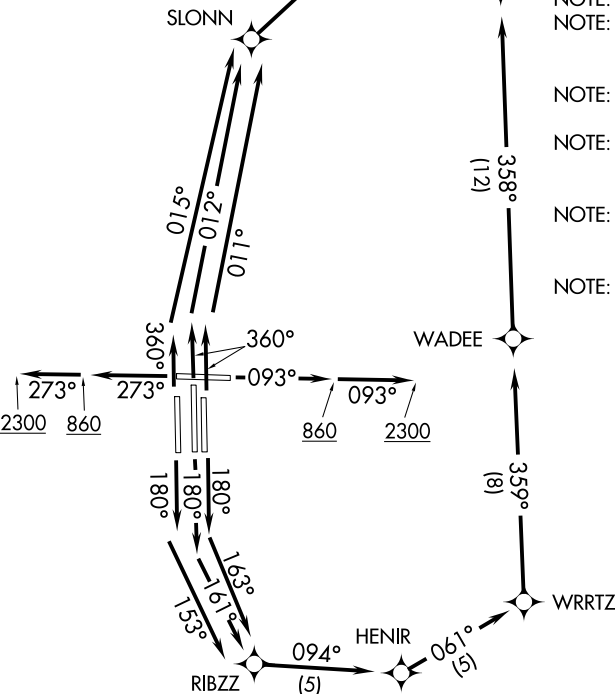
**TOP ALTITUDE:
5000**



TAKEOFF MINIMUMS:

Rwy 9, 18L/C/R, 27, 36L/C/R:
Standard with minimum climb of
500' per NM to 860.

- NOTE: DME/DME/IRU or GPS required.
- NOTE: RNAV 1.
- NOTE: Turbojets only.
- NOTE: Takeoff Rwy 18L/C/R, 36L/C/R - RADAR required for non-GPS equipped aircraft.
- NOTE: Takeoff Rwy 9, 27 - RADAR required.
- NOTE: Transponder code will be issued via PDC or Memphis clearance delivery.
- NOTE: Accelerate to 250K, reaching 10000 MSL, maintain 250K or greater, if unable advise ATC.
- NOTE: If unable to accept climb rate, advise ATC on initial contact.



SE-1, 22 FEB 2024 to 21 MAR 2024

SE-1, 22 FEB 2024 to 21 MAR 2024

NOTE: Chart not to scale.

(NARRATIVE ON FOLLOWING PAGE)



DEPARTURE ROUTE DESCRIPTION

TAKEOFF RUNWAY 9: Climb on heading 093° to 860, then continue climb to 2300 on heading 093° or as assigned by ATC, for vectors to LYZZI, then on depicted route to CRSON, thence....

TAKEOFF RUNWAY 18C: Climb on heading 180° to intercept course 161° to RIBZZ, then on depicted route to CRSON, thence....

TAKEOFF RUNWAY 18L: Climb on heading 180° to intercept course 163° to RIBZZ, then on depicted route to CRSON, thence....

TAKEOFF RUNWAY 18R: Climb on heading 180° to intercept course 153° to RIBZZ, then on depicted route to CRSON, thence....

TAKEOFF RUNWAY 27: Climb on heading 273° to 860, then continue climb to 2300 on heading 273° or as assigned by ATC, for vectors to LYZZI, then on depicted route to CRSON, thence....

TAKEOFF RUNWAY 36C: Climb on heading 360° to intercept course 012° to SLONN, then on depicted route to CRSON, thence....

TAKEOFF RUNWAY 36L: Climb on heading 360° to intercept course 015° to SLONN, then on depicted route to CRSON, thence....

TAKEOFF RUNWAY 36R: Climb on heading 360° to intercept course 011° to SLONN, then on depicted route to CRSON, thence....

....maintain 5000. Expect clearance to filed altitude within ten (10) minutes after departure.

HUMMS TRANSITION (CRSON7.HUMMS):

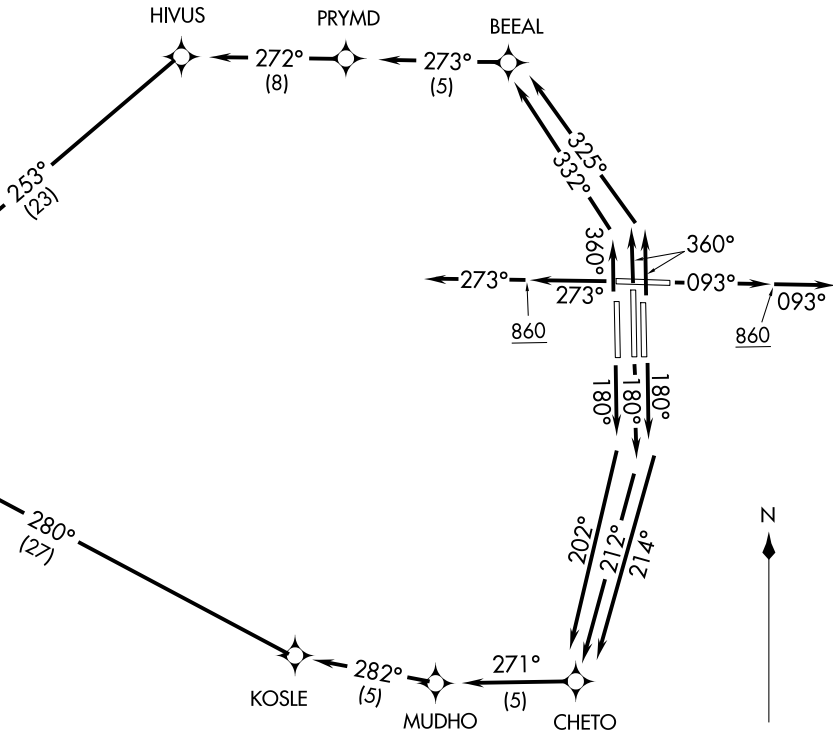
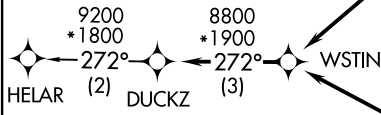
SE-1, 22 FEB 2024 to 21 MAR 2024

SE-1, 22 FEB 2024 to 21 MAR 2024

**TOP ALTITUDE:
5000**

TAKEOFF MINIMUMS:
Rwys 9, 18L/C/R, 27, 36L/C/R:
Standard with minimum climb of
500' per NM to 860.

D-ATIS
127.75
CLNC DEL
125.2
CPDLC
GND CON
121.0 379.2 (Rwy 9-27)
121.9 379.2 (Rwys 18C-36C, 18L-36R)
121.65 379.2 (Rwy 18R-36L)
MEMPHIS TOWER
118.3 257.8 (Rwy 9-27)
119.7 257.8 (Rwys 18C-36C, 18L-36R)
128.425 257.8 (Rwy 18R-36L)
MEMPHIS DEP CON
124.65 284.7



- NOTE: DME/DME/IRU or GPS required.
- NOTE: RNAV 1.
- NOTE: Turbojets only.
- NOTE: Takeoff Rwys 18L/C/R, 36L/C/R:
RADAR required for non-GPS equipped aircraft.
- NOTE: Takeoff Rwys 9, 27: RADAR required.
- NOTE: Transponder code will be issued via PDC or Memphis clearance delivery.
- NOTE: Accelerate to 250K, reaching 10000 MSL, maintain 250K or greater, if unable advise ATC.
- NOTE: If unable to accept climb rates, advise ATC on initial contact.

(NARRATIVE ON FOLLOWING PAGE)

NOTE: Chart not to scale.

DUCKZ FIVE DEPARTURE (RNAV)
(DUCKZ5, DUCKZ) 31/DECCO

MEMPHIS, TENNESSEE
MEMPHIS INTL (MEM)

(DUCKZ5, DUCKZ) 20366
DUCKZ FIVE DEPARTURE (RNAV)

MEMPHIS INTL (MEM)
MEMPHIS, TENNESSEE

AL-253 (FAA)

DEPARTURE ROUTE DESCRIPTION



TAKEOFF RUNWAY 9: Climb on heading 093° to 860, then continue climb on heading 093°, expect vectors to WSTIN, then on depicted route to DUCKZ, thence....

TAKEOFF RUNWAY 18C: Climb on heading 180° to intercept course 212° to CHETO, then on depicted route to DUCKZ, thence....

TAKEOFF RUNWAY 18L: Climb on heading 180° to intercept course 214° to CHETO, then on depicted route to DUCKZ, thence....

TAKEOFF RUNWAY 18R: Climb on heading 180° to intercept course 202° to CHETO, then on depicted route to DUCKZ, thence....

TAKEOFF RUNWAY 27: Climb on heading 273° to 860, then continue climb on heading 273°, expect vectors to WSTIN, then on depicted route to DUCKZ, thence....

TAKEOFF RUNWAY 36L: Climb on heading 360° to intercept course 332° to BEEAL, then on depicted route to DUCKZ, thence....

TAKEOFF RUNWAYS 36C/R: Climb on heading 360° to intercept course 325° to BEEAL, then on depicted route to DUCKZ, thence....

....maintain 5000. Expect clearance to filed altitude within ten (10) minutes after departure.

HELAR TRANSITION (DUCKZ5.HELAR):

SE-1, 22 FEB 2024 to 21 MAR 2024

SE-1, 22 FEB 2024 to 21 MAR 2024

ELVIS FOUR DEPARTURE

AL-253 (FAA)

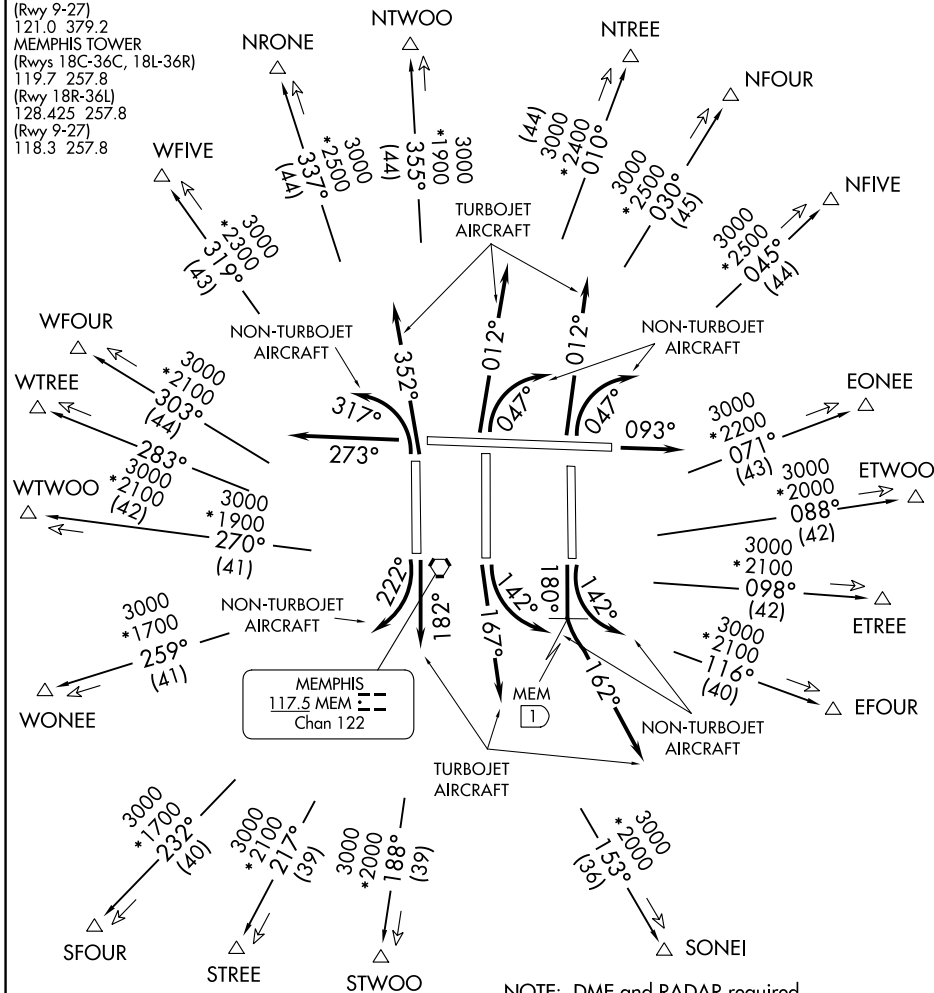
MEMPHIS INTL (MEM)

MEMPHIS, TENNESSEE

D-ATIS 127.75
 CLNC DEL
 125.2
 CPDLC
 GND CON
 (Rwys 18C-36C, 18L-36R)
 121.9 379.2
 (Rwy 18R-36L)
 121.65 379.2
 (Rwy 9-27)
 121.0 379.2
 MEMPHIS TOWER
 (Rwys 18C-36C, 18L-36R)
 119.7 257.8
 (Rwy 18R-36L)
 128.425 257.8
 (Rwy 9-27)
 118.3 257.8

TOP ALTITUDE:
(JETS) 5000
(PROPS) 3000

MEMPHIS DEP CON
 EONEE, ETWOO, ETREE, EFOUR
 NTREE, NFOUR, NFIVE, SONEI
 TRANSITIONS: 124.15 353.67
 NRONE, NTWOO, STWOO, STREE
 SFOUR, WONEE, WTWOO, WTREE,
 WFOUR, WFIVE TRANSITIONS: 124.65 284.7



NOTE: DME and RADAR required.
 NOTE: Make no turns below 800 MSL.
 NOTE: Turbojet aircraft accelerate to 250K immediately until reaching 10000 MSL, if unable advise ATC.
 NOTE: Transponder code will be issued via PDC or Memphis clearance delivery.

TAKEOFF MINIMUMS:

Rwys 9, 18C/R, 27, 36L/C/R: Standard.
 Rwy 18L: Props: Standard; Turbojets: Standard with minimum climb of 340' per NM to 800.

(NARRATIVE ON FOLLOWING PAGES)

NOTE: Chart not to scale.

ELVIS FOUR DEPARTURE

MEMPHIS, TENNESSEE

MEMPHIS INTL (MEM)

SE-1, 22 FEB 2024 to 21 MAR 2024

SE-1, 22 FEB 2024 to 21 MAR 2024



DEPARTURE ROUTE DESCRIPTION

ALL AIRCRAFT

TAKEOFF RWY 9: Climb heading 093° or as assigned by ATC, thence....

TAKEOFF RWY 27: Climb heading 273° or as assigned by ATC, thence....

TURBOJET AIRCRAFT

TAKEOFF RWY 18C: Climb heading 167° or as assigned by ATC, thence....

TAKEOFF RWY 18L: Climb heading 180° to 1 DME south of MEM VORTAC, then turn left heading 162° or as assigned by ATC, thence....

TAKEOFF RWY 18R: Climb heading 182° or as assigned by ATC, thence....

TAKEOFF RWY 36C: Climb heading 012° or assigned by ATC, thence....

TAKEOFF RWY 36L: Climb heading 352° or as assigned by ATC, thence....

TAKEOFF RWY 36R: Climb heading 012° or as assigned by ATC, thence....

NON-TURBOJET AIRCRAFT

TAKEOFF RWY 18C: Climbing left turn heading 142° or as assigned by ATC, thence....

TAKEOFF RWY 18L: Climbing left turn heading 142° or as assigned by ATC, thence....

TAKEOFF RWY 18R: Climbing right turn heading 222° or as assigned by ATC, thence....

TAKEOFF RWY 36C: Climbing right turn heading 047° or as assigned by ATC, thence....

TAKEOFF RWY 36L: Climbing left turn heading 317° or as assigned by ATC, thence....

TAKEOFF RWY 36R: Climbing right turn heading 047° or as assigned by ATC, thence....

....expect vectors to join assigned transition radial. Crossing the transition fix, continue on current heading, expect vectors from Memphis Center to join filed route. Jet aircraft maintain 5000 (or requested altitude if lower). Prop aircraft maintain 3000. Expect clearance to filed altitude within ten (10) minutes after departure.

EFOUR TRANSITION (ELVIS4.EFOUR): From over MEM VORTAC on MEM R-116 to EFOUR.

EONEE TRANSITION (ELVIS4.EONEE): From over MEM VORTAC on MEM R-071 to EONEE.

ETREE TRANSITION (ELVIS4.ETREE): From over MEM VORTAC on MEM R-098 to ETREE.

ETWOO TRANSITION (ELVIS4.ETWOO): From over MEM VORTAC on MEM R-088 to ETWOO.

NFIVE TRANSITION (ELVIS4.NFIVE): From over MEM VORTAC on MEM R-045 to NFIVE.

NFOUR TRANSITION (ELVIS4.NFOUR): From over MEM VORTAC on MEM R-030 to NFOUR.

NRONE TRANSITION (ELVIS4.NRONE): From over MEM VORTAC on MEM R-337 to NRONE.

NTREE TRANSITION (ELVIS4.NTREE): From over MEM VORTAC on MEM R-010 to NTREE.

NTWOO TRANSITION (ELVIS4.NTWOO): From over MEM VORTAC on MEM R-355 to NTWOO.

SFOUR TRANSITION (ELVIS4.SFOUR): From over MEM VORTAC on MEM R-232 to SFOUR.

SONEI TRANSITION (ELVIS4.SONEI): From over MEM VORTAC on MEM R-153 to SONEI.

STREE TRANSITION (ELVIS4.STREE): From over MEM VORTAC on MEM R-217 to STREE.

STWOO TRANSITION (ELVIS4.STWOO): From over MEM VORTAC on MEM R-188 to STWOO.

WFIVE TRANSITION (ELVIS4.WFIVE): From over MEM VORTAC on MEM R-319 to WFIVE.

WFOUR TRANSITION (ELVIS4.WFOUR): From over MEM VORTAC on MEM R-303 to WFOUR.

WONEE TRANSITION (ELVIS4.WONEE): From over MEM VORTAC on MEM R-259 to WONEE.

WTREE TRANSITION (ELVIS4.WTREE): From over MEM VORTAC on MEM R-283 to WTREE.

WTWOO TRANSITION (ELVIS4.WTWOO): From over MEM VORTAC on MEM R-270 to WTWOO.

(NOTES CONTINUED ON FOLLOWING PAGE)

SE-1, 22 FEB 2024 to 21 MAR 2024

SE-1, 22 FEB 2024 to 21 MAR 2024

- NOTE: NFIVE, EFOUR, STREE, SFOUR, WFOUR, and WFIVE transitions authorized 0200-0600 local only.
- NOTE: ETWOO and WTREE transitions restricted to aircraft requesting 9000 MSL or below, sunrise to sunset, Monday-Friday. Restrictions do not apply on weekday nights, weekends, or holidays.
- NOTE: NRONE transition restricted to Prop/Turboprop aircraft requesting 14000 MSL or below. Restriction does not apply 0200-0600 local.
- NOTE: SONEI transition restricted to aircraft requesting 7000 MSL or below, sunrise to sunset, Monday-Friday. Restrictions do not apply on weekday nights, weekends, or holidays.
- NOTE: Aircraft filing flight plans that do not meet the authorized time, altitude, or aircraft type restrictions may experience delays.

FIX NAME PRONUNCIATION:

<u>EONEE</u>	<u>EAST ONE</u>
<u>ETWOO</u>	<u>EAST TWO</u>
<u>ETREE</u>	<u>EAST THREE</u>
<u>EFOUR</u>	<u>EAST FOUR</u>
<u>SONEI</u>	<u>SOUTH ONE</u>
<u>STWOO</u>	<u>SOUTH TWO</u>
<u>STREE</u>	<u>SOUTH THREE</u>
<u>SFOUR</u>	<u>SOUTH FOUR</u>
<u>WONEE</u>	<u>WEST ONE</u>
<u>WTWOO</u>	<u>WEST TWO</u>
<u>WTREE</u>	<u>WEST THREE</u>
<u>WFOUR</u>	<u>WEST FOUR</u>
<u>WFIVE</u>	<u>WEST FIVE</u>
<u>NRONE</u>	<u>NORTH ONE</u>
<u>NTWOO</u>	<u>NORTH TWO</u>
<u>NTREE</u>	<u>NORTH THREE</u>
<u>NFOUR</u>	<u>NORTH FOUR</u>
<u>NFIVE</u>	<u>NORTH FIVE</u>

SE-1, 22 FEB 2024 to 21 MAR 2024

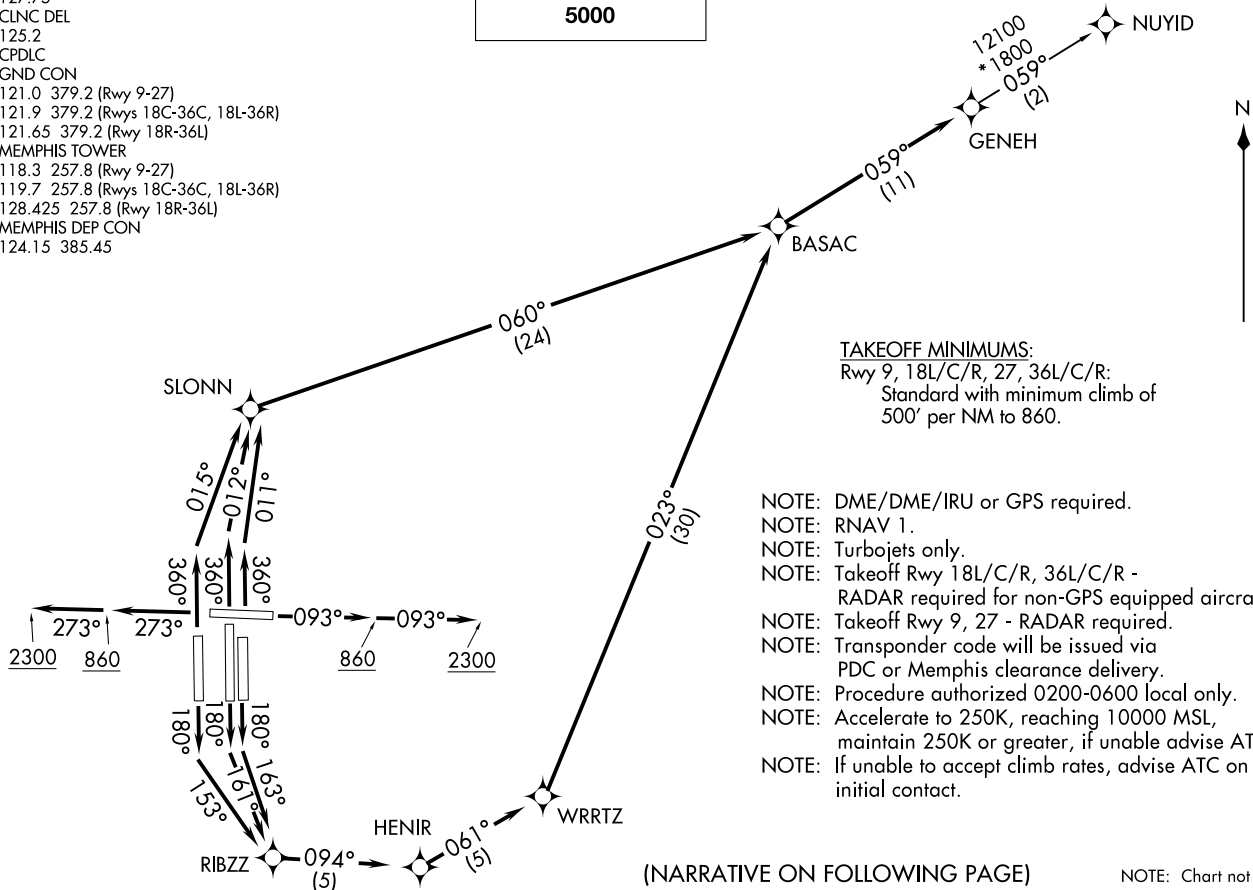
SE-1, 22 FEB 2024 to 21 MAR 2024

**TOP ALTITUDE:
5000**

D-ATIS
127.75
CLNC DEL
125.2
CPDLC
GND CON
121.0 379.2 (Rwy 9-27)
121.9 379.2 (Rwys 18C-36C, 18L-36R)
121.65 379.2 (Rwy 18R-36L)
MEMPHIS TOWER
118.3 257.8 (Rwy 9-27)
119.7 257.8 (Rwys 18C-36C, 18L-36R)
128.425 257.8 (Rwy 18R-36L)
MEMPHIS DEP CON
124.15 385.45

GENEH SEVEN DEPARTURE (RNAV)
(GENEH7.GENEH) 31DEC20

MEMPHIS, TENNESSEE
MEMPHIS INTL (MEMD)



TAKEOFF MINIMUMS:
Rwy 9, 18L/C/R, 27, 36L/C/R:
Standard with minimum climb of
500' per NM to 860.

- NOTE: DME/DME/IRU or GPS required.
- NOTE: RNAV 1.
- NOTE: Turbojets only.
- NOTE: Takeoff Rwy 18L/C/R, 36L/C/R -
RADAR required for non-GPS equipped aircraft.
- NOTE: Takeoff Rwy 9, 27 - RADAR required.
- NOTE: Transponder code will be issued via
PDC or Memphis clearance delivery.
- NOTE: Procedure authorized 0200-0600 local only.
- NOTE: Accelerate to 250K, reaching 10000 MSL,
maintain 250K or greater, if unable advise ATC.
- NOTE: If unable to accept climb rates, advise ATC on
initial contact.

(NARRATIVE ON FOLLOWING PAGE)

NOTE: Chart not to scale.

GENEH SEVEN DEPARTURE (RNAV)
(GENEH7.GENEH) 20366

MEMPHIS INTL (MEMD)
MEMPHIS, TENNESSEE

AL-253 (FAA)



DEPARTURE ROUTE DESCRIPTION

TAKEOFF RUNWAY 9: Climb on heading 093° to 860, then continue climb to 2300 on heading 093° or as assigned by ATC, for RADAR vectors to BASAC, then on depicted route to GENEH, thence. . . .

TAKEOFF RUNWAY 18C: Climb on heading 180° to intercept course 161° to RIBZZ, then on depicted route to GENEH, thence. . . .

TAKEOFF RUNWAY 18L: Climb on heading 180° to intercept course 163° to RIBZZ, then on depicted route to GENEH, thence. . . .

TAKEOFF RUNWAY 18R: Climb on heading 180° to intercept course 153° to RIBZZ, then on depicted route to GENEH, thence. . . .

TAKEOFF RUNWAY 27: Climb on heading 273° to 860, then continue climb to 2300 on heading 273° or as assigned by ATC, for RADAR vectors to BASAC then on depicted route to GENEH, thence. . . .

TAKEOFF RUNWAY 36C: Climb on heading 360° to intercept course 012° to SLONN, then on depicted route to GENEH, thence. . . .

TAKEOFF RUNWAY 36L: Climb on heading 360° to intercept course 015° to SLONN, then on depicted route to GENEH, thence. . . .

TAKEOFF RUNWAY 36R: Climb on heading 360° to intercept course 011° to SLONN, then on depicted route to GENEH, thence. . . .

. . . . maintain 5000. Expect clearance to filed altitude within ten (10) minutes after departure.

NUYID TRANSITION (GENEH7.NUYID)

SE-1, 22 FEB 2024 to 21 MAR 2024

SE-1, 22 FEB 2024 to 21 MAR 2024

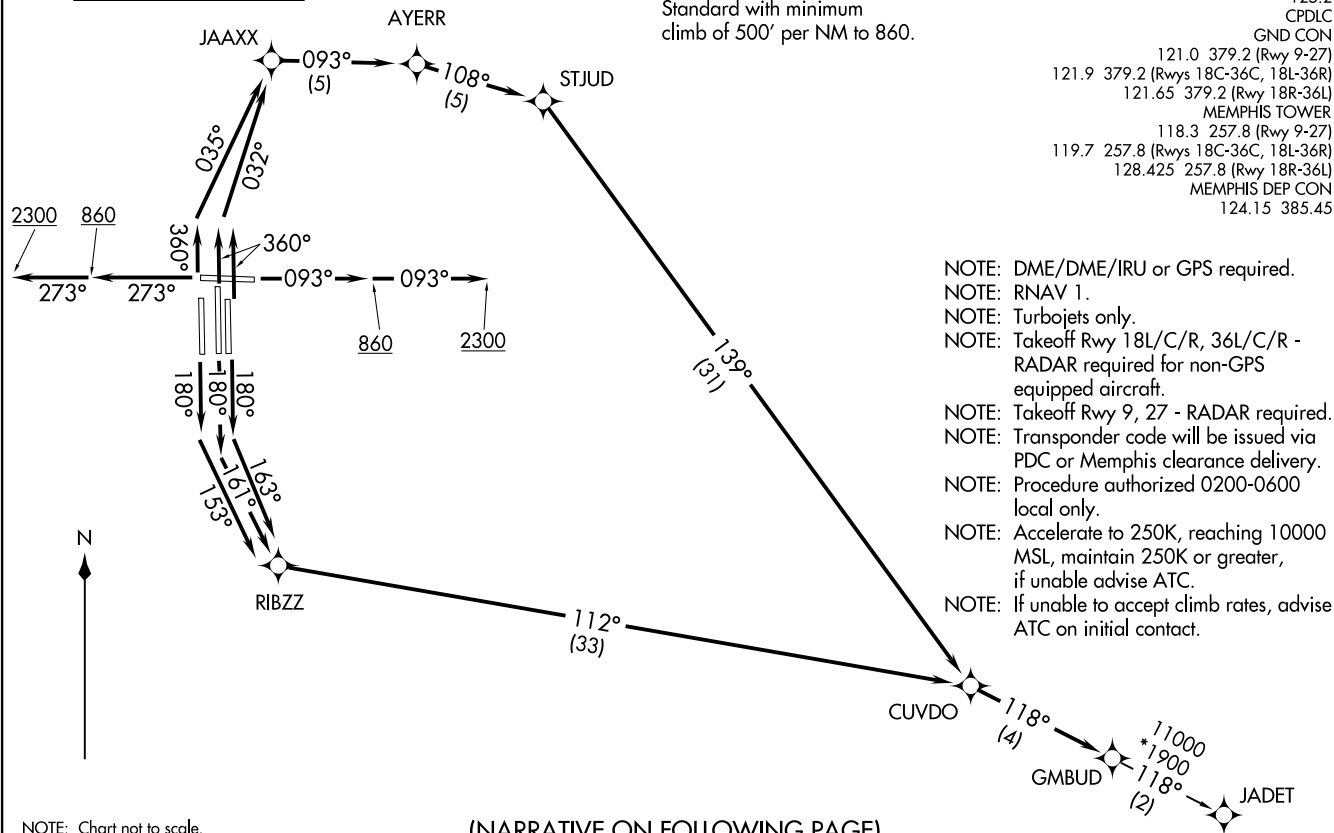
GMBUD SEVEN DEPARTURE (RNAV)
(GMBUD7.GMBUD) 31 DEC 20

MEMPHIS, TENNESSEE
MEMPHIS INTL (MET.M)

**TOP ALTITUDE:
5000**

TAKEOFF MINIMUMS:
Rwy 9, 18L/C/R, 27, 36L/C/R:
Standard with minimum
climb of 500' per NM to 860.

D-ATIS 127.75
CLNC DEL 125.2
CPDLC
GND CON
121.0 379.2 (Rwy 9-27)
121.9 379.2 (Rwys 18C-36C, 18L-36R)
121.65 379.2 (Rwy 18R-36L)
MEMPHIS TOWER 118.3 257.8 (Rwy 9-27)
119.7 257.8 (Rwys 18C-36C, 18L-36R)
128.425 257.8 (Rwy 18R-36L)
MEMPHIS DEP CON 124.15 385.45



- NOTE: DME/DME/IRU or GPS required.
- NOTE: RNAV 1.
- NOTE: Turbojets only.
- NOTE: Takeoff Rwy 18L/C/R, 36L/C/R - RADAR required for non-GPS equipped aircraft.
- NOTE: Takeoff Rwy 9, 27 - RADAR required.
- NOTE: Transponder code will be issued via PDC or Memphis clearance delivery.
- NOTE: Procedure authorized 0200-0600 local only.
- NOTE: Accelerate to 250K, reaching 10000 MSL, maintain 250K or greater, if unable advise ATC.
- NOTE: If unable to accept climb rates, advise ATC on initial contact.

(GMBUD7.GMBUD) 20366
GMBUD SEVEN DEPARTURE (RNAV)

MEMPHIS INTL (MET.M)
MEMPHIS, TENNESSEE

AI-253 (FAA)

(NARRATIVE ON FOLLOWING PAGE)



DEPARTURE ROUTE DESCRIPTION

TAKEOFF RUNWAY 9: Climb on heading 093° to 860, then continue climb to 2300 on heading 093° or as assigned by ATC, for RADAR vectors to CUVDO, then on depicted route to GMBUD, thence....

TAKEOFF RUNWAY 18C: Climb on heading 180° to intercept course 161° to RIBZZ, then on depicted route to GMBUD, thence....

TAKEOFF RUNWAY 18L: Climb on heading 180° to intercept course 163° to RIBZZ, then on depicted route to GMBUD, thence....

TAKEOFF RUNWAY 18R: Climb on heading 180° to intercept course 153° to RIBZZ, then on depicted route to GMBUD, thence....

TAKEOFF RUNWAY 27: Climb on heading 273° to 860, then continue climb to 2300 on heading 273° or as assigned by ATC, for RADAR vectors to cross CUVDO, then on depicted route to GMBUD, thence....

TAKEOFF RUNWAY 36L: Climb on heading 360° to intercept course 035° to JAAXX, then on depicted route to GMBUD, thence....

TAKEOFF RUNWAYS 36C/R: Climb on heading 360° to intercept course 032° to JAAXX, then on depicted route to GMBUD, thence....

....maintain 5000. Expect clearance to filed altitude within ten (10) minutes after departure.

JADET TRANSITION (GMBUD7.JADET):

SE-1, 22 FEB 2024 to 21 MAR 2024

SE-1, 22 FEB 2024 to 21 MAR 2024

**TOP ALTITUDE:
5000**

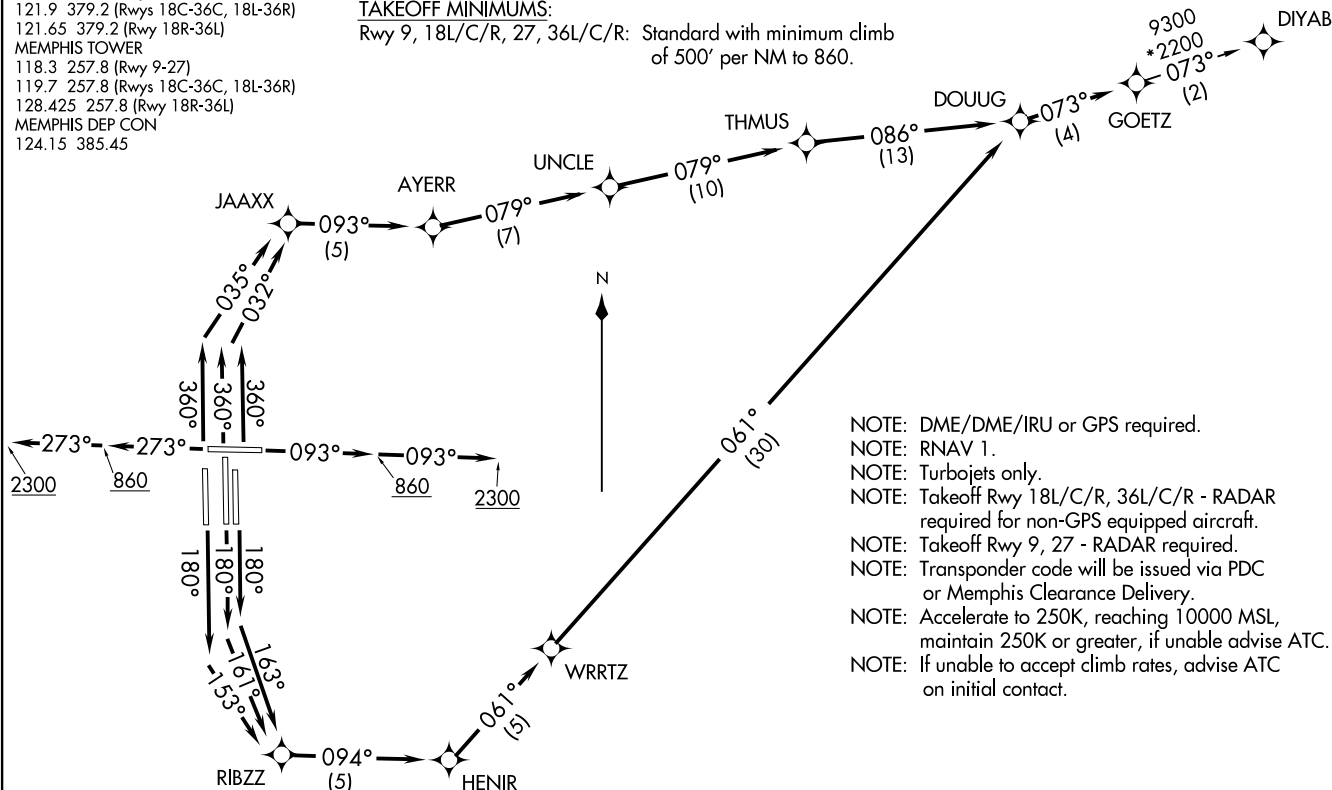
TAKEOFF MINIMUMS:

Rwy 9, 18L/C/R, 27, 36L/C/R: Standard with minimum climb of 500' per NM to 860.

D-ATIS 127.75
CLNC DEL 125.2
CPDLC
GND CON
121.0 379.2 (Rwy 9-27)
121.9 379.2 (Rwys 18C-36C, 18L-36R)
121.65 379.2 (Rwy 18R-36L)
MEMPHIS TOWER
118.3 257.8 (Rwy 9-27)
119.7 257.8 (Rwys 18C-36C, 18L-36R)
128.425 257.8 (Rwy 18R-36L)
MEMPHIS DEP CON
124.15 385.45

GOETZ SEVEN DEPARTURE (RNAV)
(GOETZZ.GOEI7Z) 31DECCO

MEMPHIS, TENNESSEE
MEMPHIS INTL (MEMI)



- NOTE: DME/DME/IRU or GPS required.
- NOTE: RNAV 1.
- NOTE: Turbojets only.
- NOTE: Takeoff Rwy 18L/C/R, 36L/C/R - RADAR required for non-GPS equipped aircraft.
- NOTE: Takeoff Rwy 9, 27 - RADAR required.
- NOTE: Transponder code will be issued via PDC or Memphis Clearance Delivery.
- NOTE: Accelerate to 250K, reaching 10000 MSL, maintain 250K or greater, if unable advise ATC.
- NOTE: If unable to accept climb rates, advise ATC on initial contact.

(NARRATIVE ON FOLLOWING PAGE)

NOTE: Chart not to scale.

(GOETZZ.GOEI7Z) 20366
GOETZ SEVEN DEPARTURE (RNAV)

AL-253 (FAA)

MEMPHIS INTL (MEMI)
MEMPHIS, TENNESSEE

GOETZ SEVEN DEPARTURE (RNAV)



DEPARTURE ROUTE DESCRIPTION

TAKEOFF RUNWAY 9: Climb on heading 093° to 860, then continue climb to 2300 on heading 093° or as assigned by ATC, for RADAR vectors to DOUUG, then on depicted route to GOETZ, thence

TAKEOFF RUNWAY 18C: Climb on heading 180° to intercept course 161° to RIBZZ, then on depicted route to GOETZ, thence

TAKEOFF RUNWAY 18L: Climb on heading 180° to intercept course 163° to RIBZZ, then on depicted route to GOETZ, thence

TAKEOFF RUNWAY 18R: Climb on heading 180° to intercept course 153° to RIBZZ, then on depicted route to GOETZ, thence

TAKEOFF RUNWAY 27: Climb on heading 273° to 860, then continue climb to 2300 on heading 273° or as assigned by ATC, for RADAR vectors to DOUUG, then on depicted route to GOETZ, thence

TAKEOFF RUNWAY 36L: Climb on heading 360° to intercept course 035° to JAAXX, then on depicted route to GOETZ, thence

TAKEOFF RUNWAYS 36C/R: Climb on heading 360° to intercept course 032° to JAAXX, then on depicted route to GOETZ, thence

. . . . maintain 5000. Expect clearance to filed altitude within ten (10) minutes after departure.

DIYAB TRANSITION (GOETZ7.DIYAB)

SE-1, 22 FEB 2024 to 21 MAR 2024

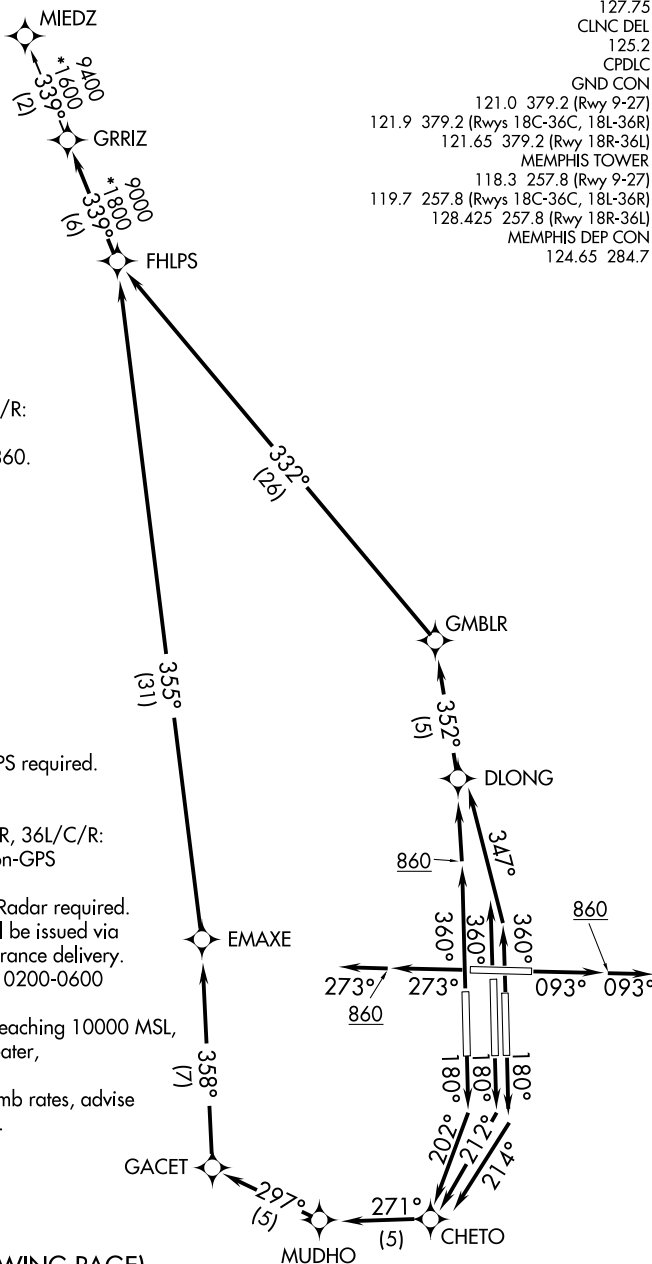
SE-1, 22 FEB 2024 to 21 MAR 2024

GRRIZ FIVE DEPARTURE (RNAV)

MEMPHIS, TENNESSEE

**TOP ALTITUDE:
5000**

D-ATIS 127.75
 CLNC DEL 125.2
 CPDLC
 GND CON 121.0 379.2 (Rwy 9-27)
 121.9 379.2 (Rwys 18C-36C, 18L-36R)
 121.65 379.2 (Rwy 18R-36L)
 MEMPHIS TOWER 118.3 257.8 (Rwy 9-27)
 119.7 257.8 (Rwys 18C-36C, 18L-36R)
 128.425 257.8 (Rwy 18R-36L)
 MEMPHIS DEP CON 124.65 284.7



TAKEOFF MINIMUMS:

Rwys 9, 18L/C/R, 27, 36L/C/R:
 Standard with minimum
 climb of 500' per NM to 860.

- NOTE: DME/DME/IRU or GPS required.
- NOTE: RNAV 1.
- NOTE: Turbojets only.
- NOTE: Takeoff Rwys 18L/C/R, 36L/C/R:
 Radar required for non-GPS
 equipped aircraft.
- NOTE: Takeoff Rwys 9, 27: Radar required.
- NOTE: Transponder code will be issued via
 PDC or Memphis clearance delivery.
- NOTE: Procedure authorized 0200-0600
 local only.
- NOTE: Accelerate to 250K, reaching 10000 MSL,
 maintain 250K or greater,
 if unable advise ATC.
- NOTE: If unable to accept climb rates, advise
 ATC on initial contact.

(NARRATIVE ON FOLLOWING PAGE)

NOTE: Chart not to scale.

GRRIZ FIVE DEPARTURE (RNAV)

(GRRIZ5.GRRIZ) 31DEC20

MEMPHIS, TENNESSEE
MEMPHIS INTL (M.E.M)

SE-1, 22 FEB 2024 to 21 MAR 2024

SE-1, 22 FEB 2024 to 21 MAR 2024

GRRIZ FIVE DEPARTURE (RNAV)



DEPARTURE ROUTE DESCRIPTION

TAKEOFF RUNWAY 9: Climb on heading 093° to 860, then continue climb on heading 093°, expect vectors to FHLPS, then on depicted route to GRRIZ, thence....

TAKEOFF RUNWAY 18C: Climb on heading 180° to intercept course 212° to CHETO, then on depicted route to GRRIZ, thence....

TAKEOFF RUNWAY 18L: Climb on heading 180° to intercept course 214° to CHETO, then on depicted route to GRRIZ, thence....

TAKEOFF RUNWAY 18R: Climb on heading 180° to intercept course 202° to CHETO, then on depicted route to GRRIZ, thence....

TAKEOFF RUNWAY 27: Climb on heading 273° to 860, then continue climb on heading 273°, expect vectors to FHLPS, then on depicted route to GRRIZ, thence....

TAKEOFF RUNWAY 36L: Climb on heading 360° to 860, then direct DLONG, then on depicted route to GRRIZ, thence....

TAKEOFF RUNWAYS 36C/R: Climb on heading 360° to intercept course 347° to DLONG, then on depicted route to GRRIZ, thence....

....maintain 5000. Expect clearance to filed altitude within ten (10) minutes after departure.

MIEDZ TRANSITION (GRRIZ5.MIEDZ):

SE-1, 22 FEB 2024 to 21 MAR 2024

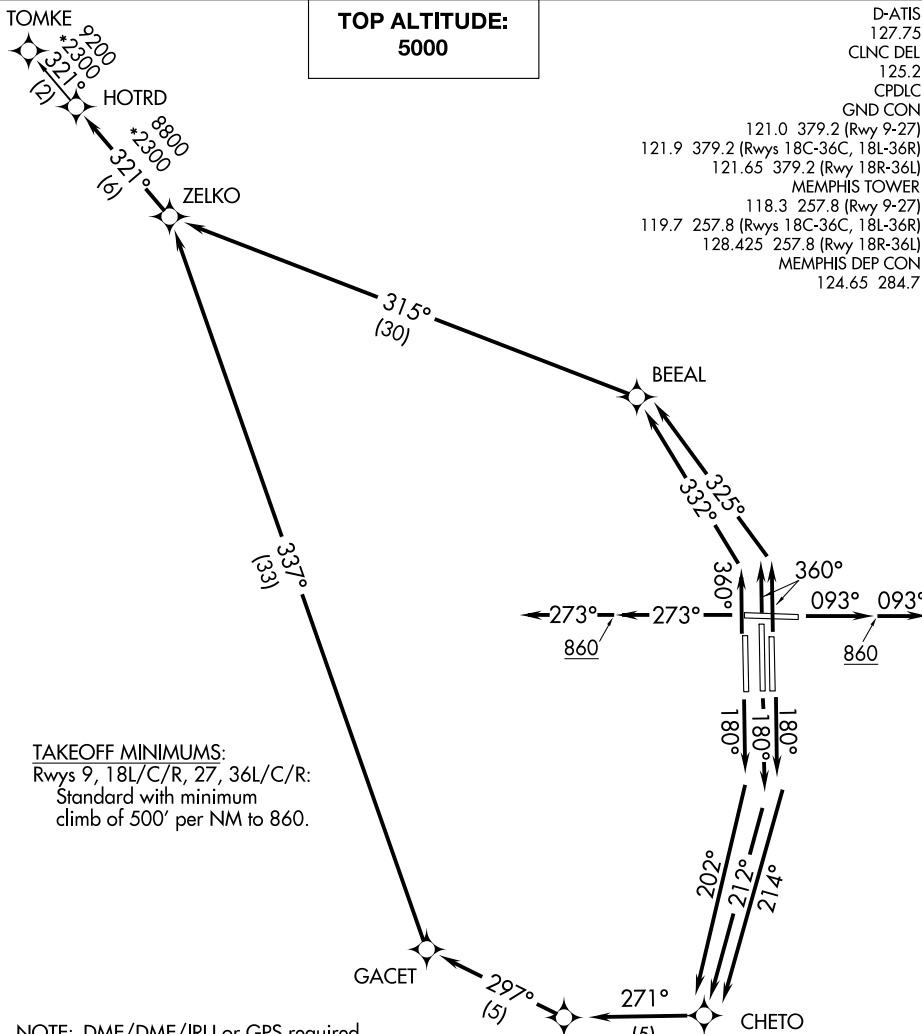
SE-1, 22 FEB 2024 to 21 MAR 2024

HOTRD FIVE DEPARTURE (RNAV)

MEMPHIS, TENNESSEE

**TOP ALTITUDE:
5000**

D-ATIS
127.75
CLNC DEL
125.2
CPDLC
GND CON
121.0 379.2 (Rwy 9-27)
121.9 379.2 (Rwys 18C-36C, 18L-36R)
121.65 379.2 (Rwy 18R-36L)
MEMPHIS TOWER
118.3 257.8 (Rwy 9-27)
119.7 257.8 (Rwys 18C-36C, 18L-36R)
128.425 257.8 (Rwy 18R-36L)
MEMPHIS DEP CON
124.65 284.7



TAKEOFF MINIMUMS:

Rwys 9, 18L/C/R, 27, 36L/C/R:

Standard with minimum
climb of 500' per NM to 860.

NOTE: DME/DME/IRU or GPS required.

NOTE: RNAV 1.

NOTE: Turbojets only.

NOTE: Takeoff Rwys 18L/C/R, 36L/C/R: Radar required
for non-GPS equipped aircraft.

NOTE: Takeoff Rwys 9, 27: Radar required.

NOTE: Transponder code will be issued via PDC or Memphis
clearance delivery.

NOTE: Procedure authorized 0200-0600 local only.

NOTE: Accelerate to 250K, reaching 10000 MSL, maintain
250K or greater, if unable advise ATC.

NOTE: If unable to accept climb rates, advise ATC on initial contact.

(NARRATIVE ON FOLLOWING PAGE)

NOTE: Chart not to scale.

HOTRD FIVE DEPARTURE (RNAV)

MEMPHIS, TENNESSEE

SE-1, 22 FEB 2024 to 21 MAR 2024

SE-1, 22 FEB 2024 to 21 MAR 2024



DEPARTURE ROUTE DESCRIPTION

TAKEOFF RUNWAY 9: Climb on heading 093° to 860, then continue climb on heading 093°, expect vectors to ZELKO, then on depicted route to HOTRD, thence....

TAKEOFF RUNWAY 18C: Climb on heading 180° to intercept course 212° to CHETO, then on depicted route to HOTRD, thence....

TAKEOFF RUNWAY 18L: Climb on heading 180° to intercept course 214° to CHETO, then on depicted route to HOTRD, thence....

TAKEOFF RUNWAY 18R: Climb on heading 180° to intercept course 202° to CHETO, then on depicted route to HOTRD, thence....

TAKEOFF RUNWAY 27: Climb on heading 273° to 860, then continue climb on heading 273°, expect vectors to ZELKO, then on depicted route to HOTRD, thence....

TAKEOFF RUNWAY 36L: Climb on heading 360° to intercept course 332° to BEEAL, then on depicted route to HOTRD, thence....

TAKEOFF RUNWAYS 36C/R: Climb on heading 360° to intercept course 325° to BEEAL, then on depicted route to HOTRD, thence....

....maintain 5000. Expect clearance to filed altitude within ten (10) minutes after departure.

TOMKE TRANSITION (HOTRD5.TOMKE):

SE-1, 22 FEB 2024 to 21 MAR 2024

SE-1, 22 FEB 2024 to 21 MAR 2024

JTEEE FIVE DEPARTURE (RNAV)

**TOP ALTITUDE:
5000**

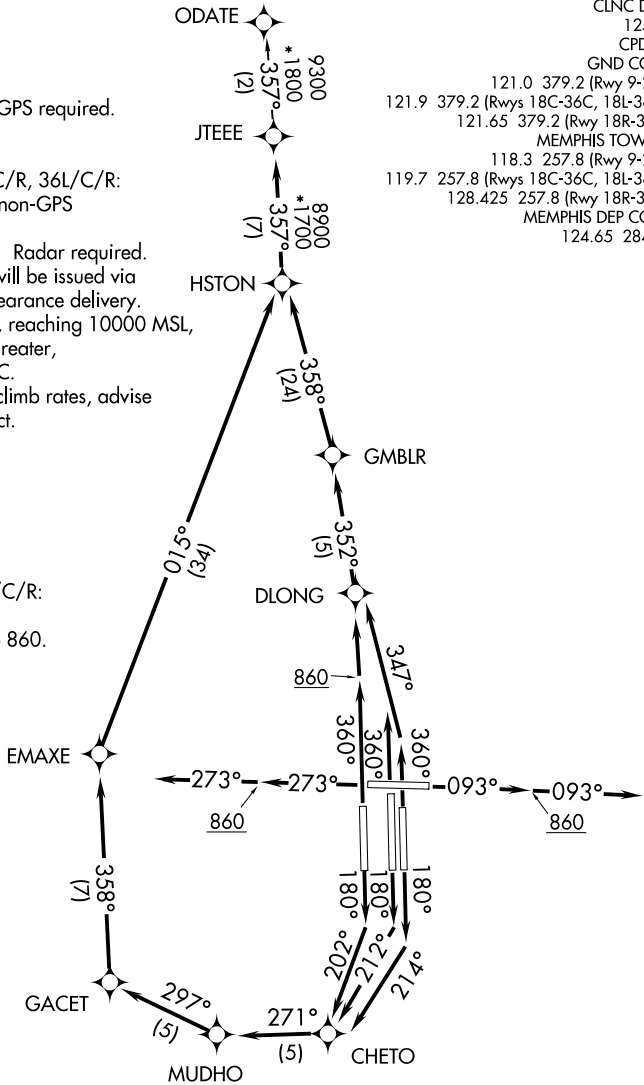
(NARRATIVE ON FOLLOWING PAGE)

D-ATIS 127.75
 CLNC DEL 125.2
 CPDLC
 GND CON 121.0 379.2 (Rwy 9-27)
 121.9 379.2 (Rwys 18C-36C, 18L-36R)
 121.65 379.2 (Rwy 18R-36L)
 MEMPHIS TOWER 118.3 257.8 (Rwy 9-27)
 119.7 257.8 (Rwys 18C-36C, 18L-36R)
 128.425 257.8 (Rwy 18R-36L)
 MEMPHIS DEP CON 124.65 284.7

- NOTE: DME/DME/IRU or GPS required.
- NOTE: RNAV 1.
- NOTE: Turbojets only.
- NOTE: Takeoff Rwys 18L/C/R, 36L/C/R: Radar required for non-GPS equipped aircraft.
- NOTE: Takeoff Rwys 9, 27: Radar required.
- NOTE: Transponder code will be issued via PDC or Memphis clearance delivery.
- NOTE: Accelerate to 250K, reaching 10000 MSL, maintain 250K or greater, if unable advise ATC.
- NOTE: If unable to accept climb rates, advise ATC on initial contact.

TAKEOFF MINIMUMS:

Rwys 9, 18L/C/R, 27, 36L/C/R:
 Standard with minimum climb of 500' per NM to 860.



NOTE: Chart not to scale.

SE-1, 22 FEB 2024 to 21 MAR 2024

SE-1, 22 FEB 2024 to 21 MAR 2024

JTEEE FIVE DEPARTURE (RNAV)

DEPARTURE ROUTE DESCRIPTION



TAKEOFF RUNWAY 9: Climb on heading 093° to 860, then continue climb on heading 093°, expect vectors to HSTON, then on depicted route to JTEEE, thence....

TAKEOFF RUNWAY 18C: Climb on heading 180° to intercept course 212° to CHETO, then on depicted route to JTEEE, thence....

TAKEOFF RUNWAY 18L: Climb on heading 180° to intercept course 214° to CHETO, then on depicted route to JTEEE, thence....

TAKEOFF RUNWAY 18R: Climb on heading 180° to intercept course 202° to CHETO, then on depicted route to JTEEE, thence....

TAKEOFF RUNWAY 27: Climb on heading 273° to 860, then continue climb on heading 273°, expect vectors to HSTON, then on depicted route to JTEEE thence....

TAKEOFF RUNWAY 36L: Climb on heading 360° to 860, then direct DLONG, then on depicted route to JTEEE, thence....

TAKEOFF RUNWAYS 36C/R: Climb on heading 360° to intercept course 347° to DLONG, then on depicted route to JTEEE, thence....

....maintain 5000. Expect clearance to filed altitude within ten (10) minutes after departure.

ODATE TRANSITION (JTEEE5.ODATE):

SE-1, 22 FEB 2024 to 21 MAR 2024

SE-1, 22 FEB 2024 to 21 MAR 2024

TOP ALTITUDE:
5000

D-ATIS
127.75
CLNC DEL
125.2
CPDLC
GND CON
121.0 379.2 (Rwy 9-27)
121.9 379.2 (Rwys 18C-36C, 18L-36R)
121.65 379.2 (Rwy 18R-36L)
MEMPHIS TOWER
118.3 257.8 (Rwy 9-27)
119.7 257.8 (Rwys 18C-36C, 18L-36R)
128.425 257.8 (Rwy 18R-36L)
MEMPHIS DEP CON
124.65 284.7

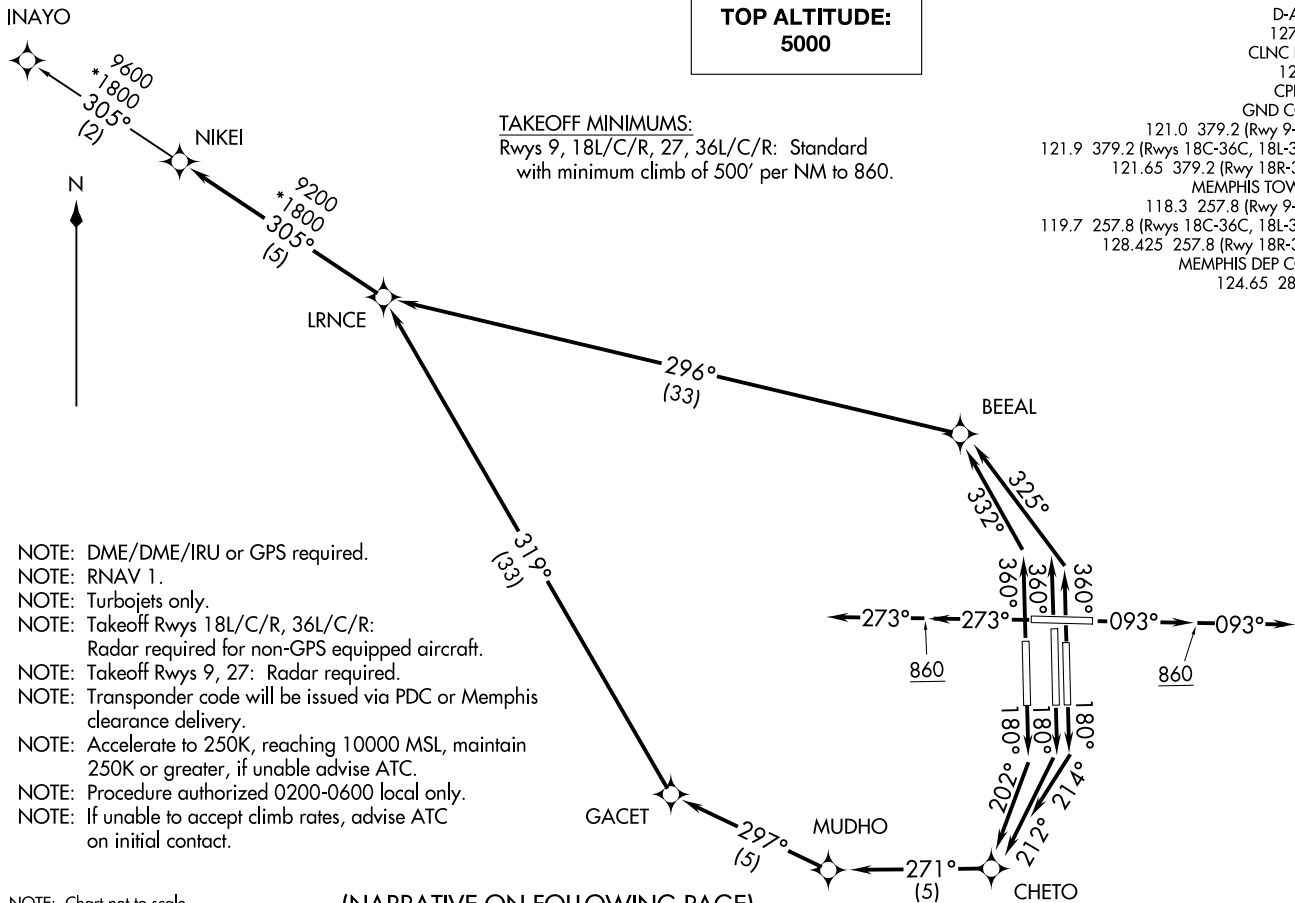
TAKEOFF MINIMUMS:

Rwys 9, 18L/C/R, 27, 36L/C/R: Standard
with minimum climb of 500' per NM to 860.

(NIKE15.NIKE1) 20366

A1-253 (FAA)

MEMPHIS INTL (MET.M)
MEMPHIS, TENNESSEE



- NOTE: DME/DME/IRU or GPS required.
- NOTE: RNAV 1.
- NOTE: Turbojets only.
- NOTE: Takeoff Rwys 18L/C/R, 36L/C/R:
Radar required for non-GPS equipped aircraft.
- NOTE: Takeoff Rwys 9, 27: Radar required.
- NOTE: Transponder code will be issued via PDC or Memphis clearance delivery.
- NOTE: Accelerate to 250K, reaching 10000 MSL, maintain 250K or greater, if unable advise ATC.
- NOTE: Procedure authorized 0200-0600 local only.
- NOTE: If unable to accept climb rates, advise ATC on initial contact.

NOTE: Chart not to scale.

(NARRATIVE ON FOLLOWING PAGE)

NIKEI FIVE DEPARTURE (RNAV)
(NIKE15.NIKE1) 31DEC20

MEMPHIS, TENNESSEE
MEMPHIS INTL (MET.M)

NIKEI FIVE DEPARTURE (RNAV)



DEPARTURE ROUTE DESCRIPTION

TAKEOFF RUNWAY 9: Climb on heading 093° to 860, then continue climb on heading 093°, expect vectors to LRNCE, then on depicted route to NIKEI, thence....

TAKEOFF RUNWAY 18C: Climb on heading 180° to intercept course 212° to CHETO, then on depicted route to NIKEI, thence....

TAKEOFF RUNWAY 18L: Climb on heading 180° to intercept course 214° to CHETO, then on depicted route to NIKEI, thence....

TAKEOFF RUNWAY 18R: Climb on heading 180° to intercept course 202° to CHETO, then on depicted route to NIKEI, thence....

TAKEOFF RUNWAY 27: Climb on heading 273° to 860, then continue climb on heading 273°, expect vectors to LRNCE, then on depicted route to NIKEI, thence....

TAKEOFF RUNWAY 36L: Climb on heading 360° to intercept course 332° to BEEAL, then on depicted route to NIKEI, thence....

TAKEOFF RUNWAYS 36C/R: Climb on heading 360° to intercept course 325° to BEEAL, then on depicted route to NIKEI, thence....

....maintain 5000. Expect clearance to filed altitude within ten (10) minutes after departure.

INAYO TRANSITION (NIKEI5.INAYO):

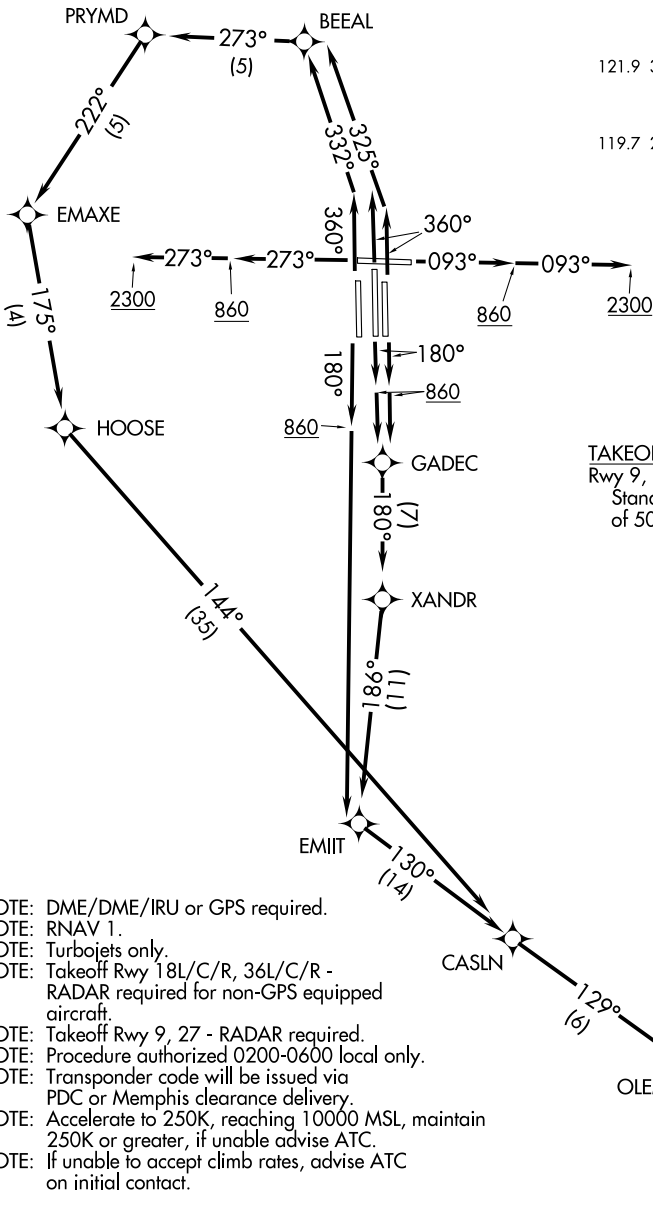
SE-1, 22 FEB 2024 to 21 MAR 2024

SE-1, 22 FEB 2024 to 21 MAR 2024

OLEMS SIX DEPARTURE (RNAV)

TOP ALTITUDE:
5000

- D-ATIS 127.75
- CLNC DEL 125.2
- CPDLC 121.0 379.2 (Rwy 9-27)
- GND CON 121.9 379.2 (Rwys 18C-36C, 18L-36R)
- 121.65 379.2 (Rwy 18R-36L)
- MEMPHIS TOWER 118.3 257.8 (Rwy 9-27)
- 119.7 257.8 (Rwys 18C-36C, 18L-36R)
- 128.425 257.8 (Rwy 18R-36L)
- MEMPHIS DEP CON 124.65 284.7



TAKEOFF MINIMUMS:
 Rwy 9, 18L/C/R, 27, 36L/C/R:
 Standard with minimum climb
 of 500' per NM to 860.

- NOTE: DME/DME/IRU or GPS required.
- NOTE: RNAV 1.
- NOTE: Turbojets only.
- NOTE: Takeoff Rwy 18L/C/R, 36L/C/R - RADAR required for non-GPS equipped aircraft.
- NOTE: Takeoff Rwy 9, 27 - RADAR required.
- NOTE: Procedure authorized 0200-0600 local only.
- NOTE: Transponder code will be issued via PDC or Memphis clearance delivery.
- NOTE: Accelerate to 250K, reaching 10000 MSL, maintain 250K or greater, if unable advise ATC.
- NOTE: If unable to accept climb rates, advise ATC on initial contact.

(NARRATIVE ON FOLLOWING PAGE)

NOTE: Chart not to scale.

OLEMS SIX DEPARTURE (RNAV)

SE-1, 22 FEB 2024 to 21 MAR 2024

SE-1, 22 FEB 2024 to 21 MAR 2024

OLEMS SIX DEPARTURE (RNAV)



DEPARTURE ROUTE DESCRIPTION

TAKEOFF RUNWAY 9: Climb on heading 093° to 860, then continue climb to 2300 on heading 093° or as assigned by ATC, for RADAR vectors to CASLN, then on depicted route to OLEMS, thence....

TAKEOFF RUNWAYS 18C/L: Climb on heading 180° to 860, then direct GADEC, then on depicted route to OLEMS, thence....

TAKEOFF RUNWAY 18R: Climb on heading 180° to 860, then direct EMIIT, then on depicted route to OLEMS, thence....

TAKEOFF RUNWAY 27: Climb on heading 273° to 860, then continue climb to 2300 on heading 273° or as assigned by ATC, for RADAR vectors to CASLN, then on depicted route to OLEMS, thence....

TAKEOFF RUNWAY 36L: Climb on heading 360° to intercept course 332° to BEEAL, then on depicted route to OLEMS, thence....

TAKEOFF RUNWAYS 36C/R: Climb on heading 360° to intercept course 325° to BEEAL, then on depicted route to OLEMS, thence....

....maintain 5000. Expect clearance to filed altitude within ten (10) minutes after departure.

LEYIK TRANSITION (OLEMS6.LEYIK)

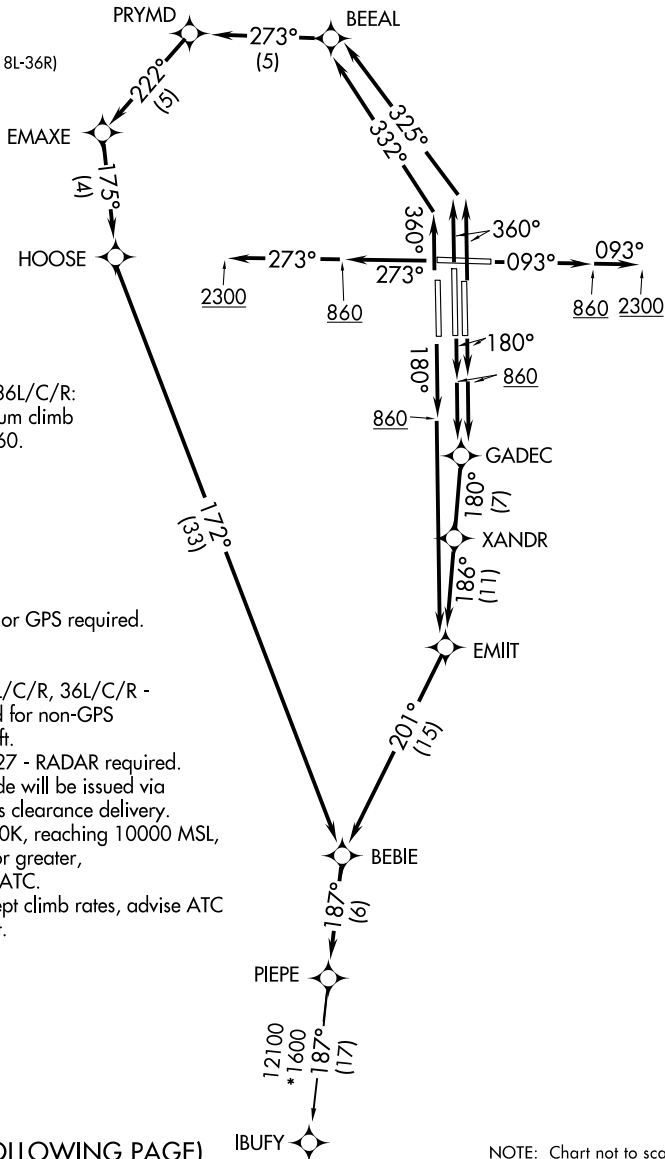
SE-1, 22 FEB 2024 to 21 MAR 2024

SE-1, 22 FEB 2024 to 21 MAR 2024

PIEPE SIX DEPARTURE (RNAV)

**TOP ALTITUDE:
5000**

D-ATIS
127.75
CLNC DEL
125.2
CPDLC
GND CON
121.0 379.2 (Rwy 9-27)
121.9 379.2 (Rwys 18C-36C, 18L-36R)
121.65 379.2 (Rwy 18R-36L)
MEMPHIS TOWER
118.3 257.8 (Rwy 9-27)
119.7 257.8 (Rwys 18C-36C, 18L-36R)
128.425 257.8 (Rwy 18R-36L)
MEMPHIS DEP CON
124.65 284.7



TAKEOFF MINIMUMS:

Rwy 9, 18L/C/R, 27, 36L/C/R:
Standard with minimum climb
of 500' per NM to 860.

- NOTE: DME/DME/IRU or GPS required.
- NOTE: RNAV 1.
- NOTE: Turbojets only.
- NOTE: Takeoff Rwy 18L/C/R, 36L/C/R - RADAR required for non-GPS equipped aircraft.
- NOTE: Takeoff Rwy 9, 27 - RADAR required.
- NOTE: Transponder code will be issued via PDC or Memphis clearance delivery.
- NOTE: Accelerate to 250K, reaching 10000 MSL, maintain 250K or greater, if unable advise ATC.
- NOTE: If unable to accept climb rates, advise ATC on initial contact.

(NARRATIVE ON FOLLOWING PAGE)

NOTE: Chart not to scale.

PIEPE SIX DEPARTURE (RNAV)

SE-1, 22 FEB 2024 to 21 MAR 2024

SE-1, 22 FEB 2024 to 21 MAR 2024

PIEPE SIX DEPARTURE (RNAV)



DEPARTURE ROUTE DESCRIPTION

TAKEOFF RUNWAY 9: Climb on heading 093° to 860, then continue climb to 2300 on heading 093° or as assigned by ATC, for RADAR vectors to BEBIE, then on depicted route to PIEPE, thence. . . .

TAKEOFF RUNWAYS 18C/L: Climb on heading 180° to 860, then direct GADEC, then on depicted route to PIEPE, thence. . . .

TAKEOFF RUNWAY 18R: Climb on heading 180° to 860, then direct EMIIT, then on depicted route to PIEPE, thence. . . .

TAKEOFF RUNWAY 27: Climb on heading 273° to 860, then continue climb to 2300 on heading 273° or as assigned by ATC, for RADAR vectors to BEBIE, then on depicted route to PIEPE, thence. . . .

TAKEOFF RUNWAYS 36C/R: Climb on heading 360° to intercept course 325° to BEEAL, then on depicted route to PIEPE, thence. . . .

TAKEOFF RUNWAY 36L: Climb on heading 360° to intercept course 332° to BEEAL, then on depicted route to PIEPE, thence. . . .

. . . .maintain 5000. Expect clearance to filed altitude within ten (10) minutes after departure.

IBUFY TRANSITION (PIEPE6.IBUFY):

SE-1, 22 FEB 2024 to 21 MAR 2024

SE-1, 22 FEB 2024 to 21 MAR 2024

SELPH SEVEN DEPARTURE (RNAV)

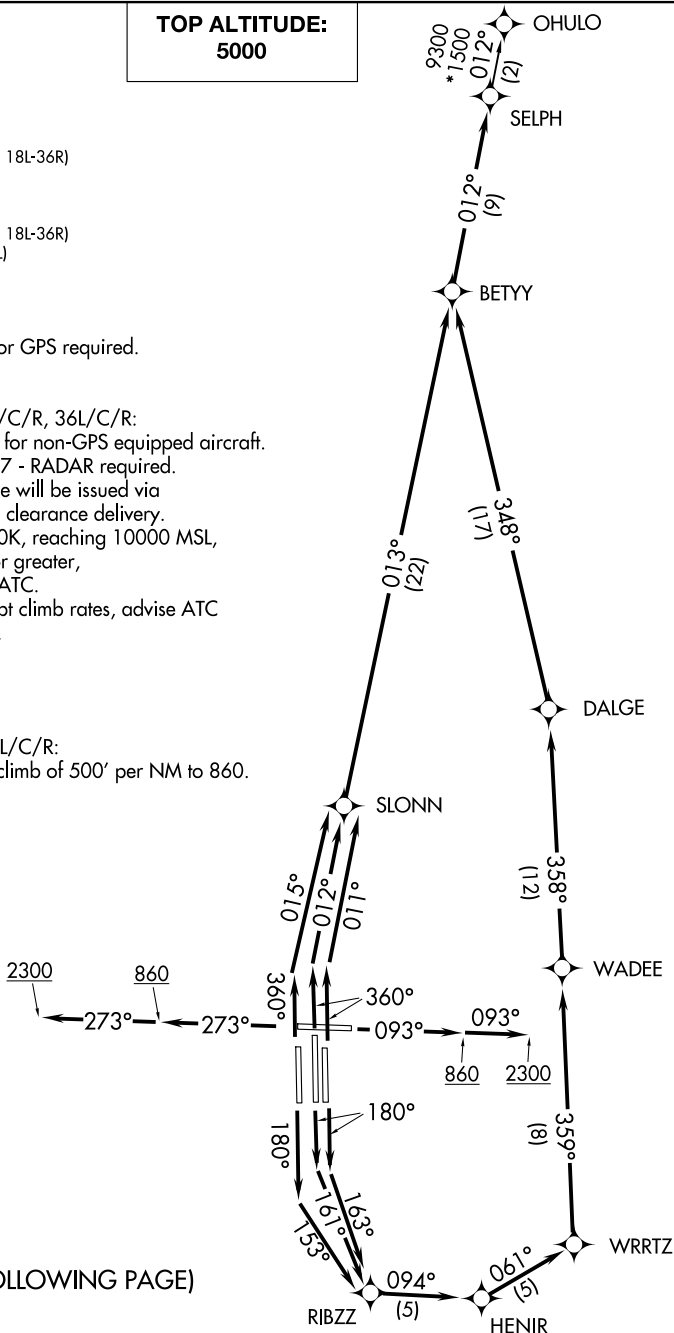
**TOP ALTITUDE:
5000**

D-ATIS
127.75
CLINC DEL
125.2
CPDLC
GND CON
121.0 379.2 (Rwy 9-27)
121.9 379.2 (Rwys 18C-36C, 18L-36R)
121.65 379.2 (Rwy 18R-36L)
MEMPHIS TOWER
118.3 257.8 (Rwy 9-27)
119.7 257.8 (Rwys 18C-36C, 18L-36R)
128.425 257.8 (Rwy 18R-36L)
MEMPHIS DEP CON
124.15 385.45

- NOTE: DME/DME/IRU or GPS required.
- NOTE: RNAV 1.
- NOTE: Turbojets only.
- NOTE: Takeoff Rwy 18L/C/R, 36L/C/R:
RADAR required for non-GPS equipped aircraft.
- NOTE: Takeoff Rwy 9, 27 - RADAR required.
- NOTE: Transponder code will be issued via PDC or Memphis clearance delivery.
- NOTE: Accelerate to 250K, reaching 10000 MSL, maintain 250K or greater, if unable advise ATC.
- NOTE: If unable to accept climb rates, advise ATC on initial contact.

TAKEOFF MINIMUMS:

Rwy 9, 18L/C/R, 27, 36L/C/R:
Standard with minimum climb of 500' per NM to 860.



(NARRATIVE ON FOLLOWING PAGE)

NOTE: Chart not to scale.

SELPH SEVEN DEPARTURE (RNAV)

(SELPH7.SELPH) 31DEC20

MEMPHIS, TENNESSEE
MEMPHIS INTL (M.E.M)

SE-1, 22 FEB 2024 to 21 MAR 2024

SE-1, 22 FEB 2024 to 21 MAR 2024

SELPH SEVEN DEPARTURE (RNAV)



DEPARTURE ROUTE DESCRIPTION

TAKEOFF RUNWAY 9: Climb on heading 093° to 860, then continue climb to 2300 on heading 093° or as assigned by ATC, for RADAR vectors to BETYY, then on depicted route to SELPH, thence . . .

TAKEOFF RUNWAY 18C: Climb on heading 180° to intercept course 161° to RIBZZ, then on depicted route to SELPH, thence . . .

TAKEOFF RUNWAY 18L: Climb on heading 180° to intercept course 163° to RIBZZ, then on depicted route to SELPH, thence . . .

TAKEOFF RUNWAY 18R: Climb on heading 180° to intercept course 153° to RIBZZ, then on depicted route to SELPH, thence . . .

TAKEOFF RUNWAY 27: Climb on heading 273° to 860, then continue climb to 2300 on heading 273° or as assigned by ATC, for RADAR vectors to BETYY, then on depicted route to SELPH, thence . . .

TAKEOFF RUNWAY 36C: Climb on heading 360° to intercept course 012° to SLONN, then on depicted route to SELPH, thence . . .

TAKEOFF RUNWAY 36L: Climb on heading 360° to intercept course 015° to SLONN, then on depicted route to SELPH, thence . . .

TAKEOFF RUNWAY 36R: Climb on heading 360° to intercept course 011° to SLONN, then on depicted route to SELPH, thence . . .

. . . maintain 5000. Expect clearance to filed altitude within ten (10) minutes after departure.

OHULO TRANSITION (SELPH7.OHULO)

SE-1, 22 FEB 2024 to 21 MAR 2024

SE-1, 22 FEB 2024 to 21 MAR 2024

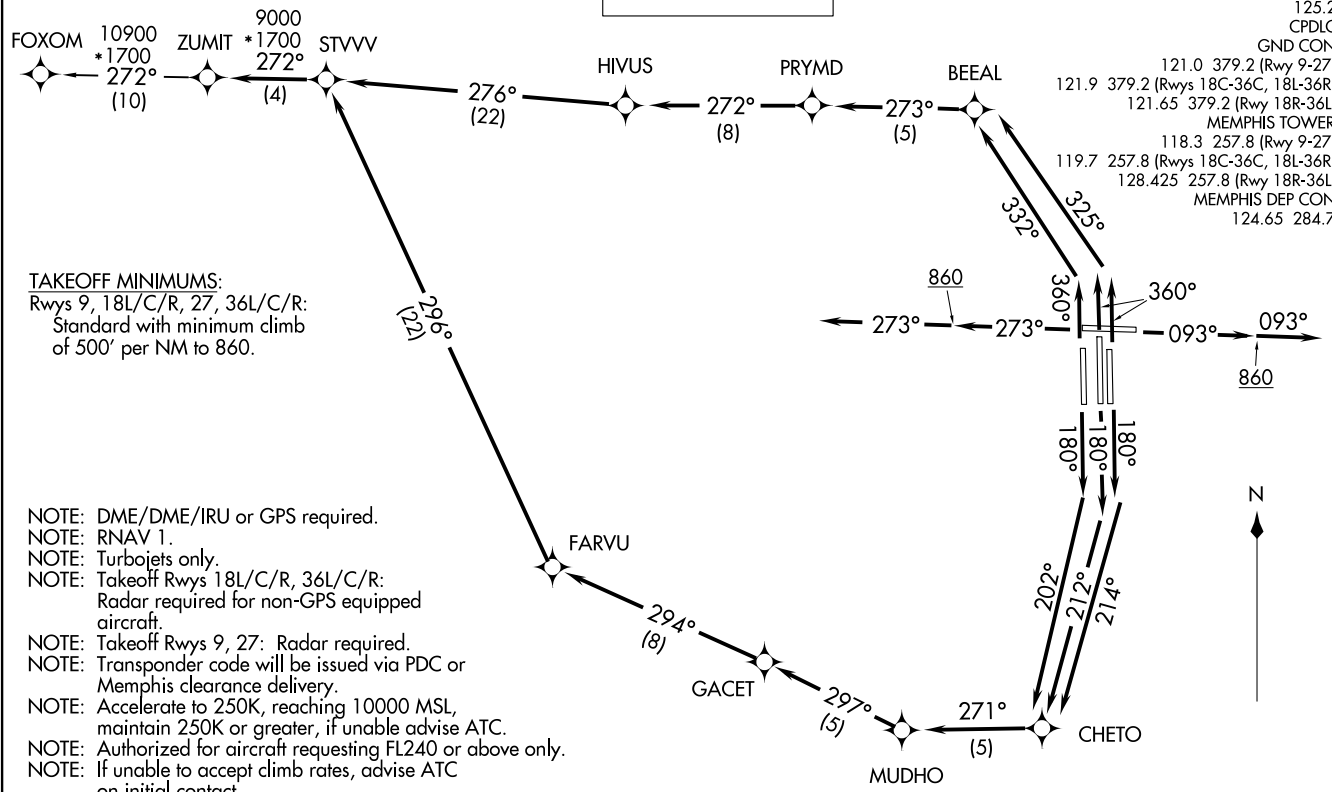
**TOP ALTITUDE:
5000**

D-ATIS 127.75
CLNC DEL 125.2
CPDLC
GND CON
121.0 379.2 (Rwy 9-27)
121.9 379.2 (Rwys 18C-36C, 18L-36R)
121.65 379.2 (Rwy 18R-36L)
MEMPHIS TOWER
118.3 257.8 (Rwy 9-27)
119.7 257.8 (Rwys 18C-36C, 18L-36R)
128.425 257.8 (Rwy 18R-36L)
MEMPHIS DEP CON
124.65 284.7

(ZUMIT5 ZUMIT) 21224
ZUMIT FIVE DEPARTURE (RNAV)

AL-253 (FAA)

MEMPHIS INTL (METRM)
MEMPHIS, TENNESSEE



TAKEOFF MINIMUMS:
Rwys 9, 18L/C/R, 27, 36L/C/R:
Standard with minimum climb
of 500' per NM to 860.

- NOTE: DME/DME/IRU or GPS required.
- NOTE: RNAV 1.
- NOTE: Turbojets only.
- NOTE: Takeoff Rwys 18L/C/R, 36L/C/R:
Radar required for non-GPS equipped aircraft.
- NOTE: Takeoff Rwys 9, 27: Radar required.
- NOTE: Transponder code will be issued via PDC or Memphis clearance delivery.
- NOTE: Accelerate to 250K, reaching 10000 MSL, maintain 250K or greater, if unable advise ATC.
- NOTE: Authorized for aircraft requesting FL240 or above only.
- NOTE: If unable to accept climb rates, advise ATC on initial contact.

(NARRATIVE ON FOLLOWING PAGE)

NOTE: Chart not to scale.

ZUMIT FIVE DEPARTURE (RNAV)
(ZUMIT5 ZUMIT) 31DECC20

MEMPHIS, TENNESSEE
MEMPHIS INTL (METRM)

ZUMIT FIVE DEPARTURE (RNAV)

DEPARTURE ROUTE DESCRIPTION



TAKEOFF RUNWAY 9: Climb on heading 093° to 860, then continue climb on heading 093°, expect vectors to STVVV, then on depicted route to ZUMIT, thence....

TAKEOFF RUNWAY 18C: Climb on heading 180° to intercept course 212° to CHETO, then on depicted route to ZUMIT, thence....

TAKEOFF RUNWAY 18L: Climb on heading 180° to intercept course 214° to CHETO, then on depicted route to ZUMIT, thence....

TAKEOFF RUNWAY 18R: Climb on heading 180° to intercept course 202° to CHETO, then on depicted route to ZUMIT, thence....

TAKEOFF RUNWAY 27: Climb on heading 273° to 860, then continue climb on heading 273°, expect vectors to STVVV, then on depicted route to ZUMIT, thence....

TAKEOFF RUNWAY 36L: Climb on heading 360° to intercept course 332° to BEEAL, then on depicted route to ZUMIT, thence....

TAKEOFF RUNWAYS 36C/R: Climb on heading 360° to intercept course 325° to BEEAL, then on depicted route to ZUMIT, thence....

....maintain 5000. Expect clearance to filed altitude within ten (10) minutes after departure.

FOXOM TRANSITION (ZUMIT5.FOXOM):

SE-1, 22 FEB 2024 to 21 MAR 2024

SE-1, 22 FEB 2024 to 21 MAR 2024