

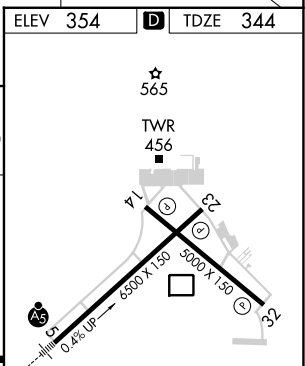
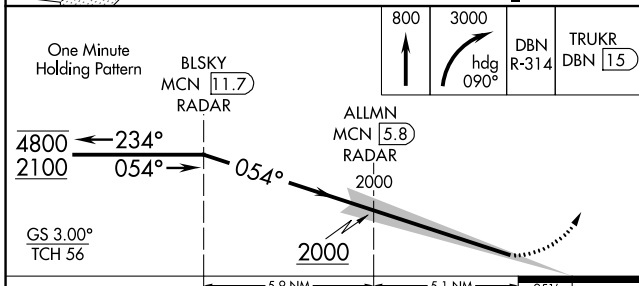
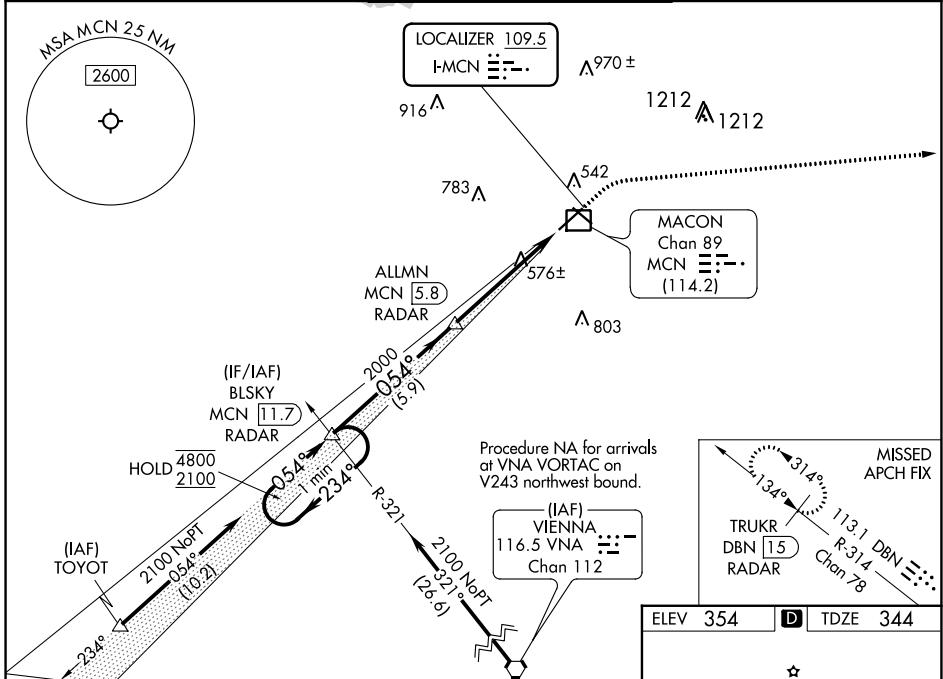
LOC I-MCN	APP CRS	Rwy Idg	<b>6221</b>
<b>109.5</b>	<b>054°</b>	TDZE	<b>344</b>
		Apt Elev	<b>354</b>

**ILS RWY 5 (SA CAT I & II)**  
MIDDLE GEORGIA RGNL (MCN)

DME and RADAR required.

**MALS** MISSED APPROACH: Climb to 800 then climbing right turn to 3000 on heading 090° and DBN VORTAC R-314 to TRUKR/DBN VORTAC 15 DME/RADAR and hold.

ATIS	ATLANTA APP CON *	MACON TOWER *	GND CON	UNICOM
<b>120.775</b>	<b>124.2 279.6</b>	<b>128.2 (CTAF) 257.8</b>	<b>121.65</b>	<b>122.95</b>



CATEGORY	A	B	C	D
S-ILS 5	SA CAT I	RA 216/14	150 DA 494	
S-ILS 5	SA CAT II	RA 151/12	100 DA 444	

**SA CATEGORY I & II ILS - SPECIAL AIRCREW & AIRCRAFT CERTIFICATION REQUIRED**

HIRL Rwy 5-23

MIRL Rwy 14-32

REIL Rws 23 and 32

SE-4, 22 FEB 2024 to 21 MAR 2024

SE-4, 22 FEB 2024 to 21 MAR 2024

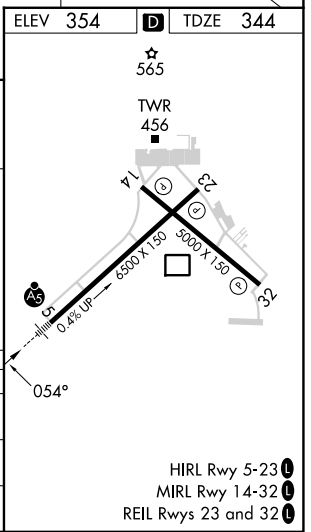
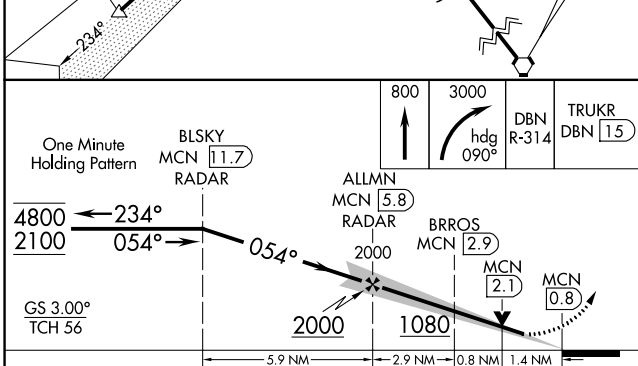
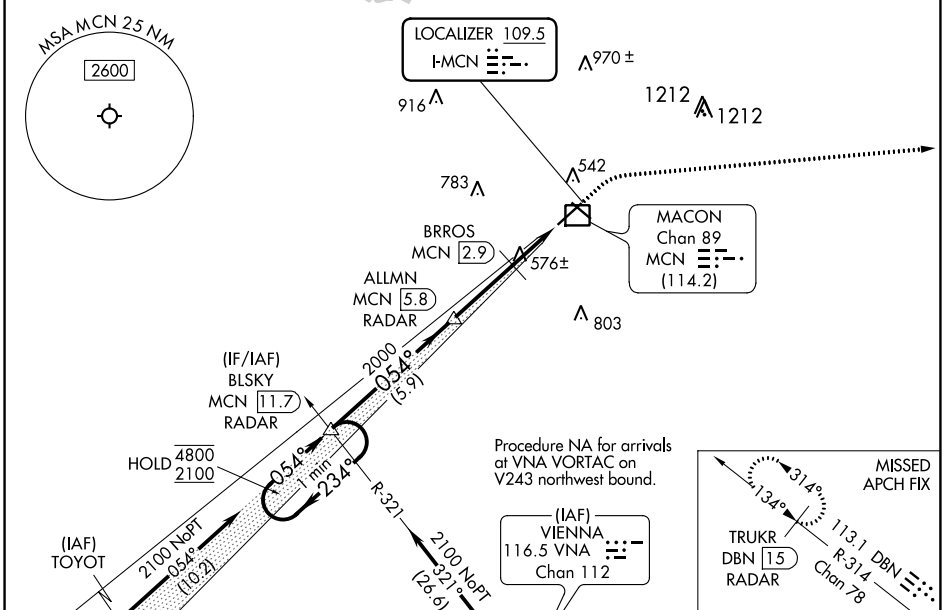
LOC I-MCN <b>109.5</b>	APP CRS <b>054°</b>	Rwy Idg TDZE Apt Elev	<b>6221</b> <b>344</b> <b>354</b>
---------------------------	------------------------	-----------------------------	---

# ILS or LOC RWY 5

MIDDLE GEORGIA RGNL (MCN)

DME and RADAR required.	MALSR 	MISSED APPROACH: Climb to 800 then climbing right turn to 3000 on heading 090° and DBN VORTAC R-314 to TRUKR/DBN VORTAC 15 DME/RADAR and hold.
<p><b>▲</b> DME from MCN VORTAC. Simultaneous reception of I-MCN and MCN DME required. For inop ALS, increase S-ILS 5 Cat E visibility to RVR 4000 and S-LOC 5 Cats C, D, and E visibilities to 1 3/8 SM. * RVR 1800 authorized with use of FD or AP or HUD to DA.</p>		

ATIS <b>120.775</b>	ATLANTA APP CON * <b>124.2 279.6</b>	MACON TOWER * <b>128.2 (CTAF) 257.8</b>	GND CON <b>121.65</b>	UNICOM <b>122.95</b>
------------------------	---	--	--------------------------	-------------------------



CATEGORY	A	B	C	D	E
S-ILS 5 *	544/24 200 (200-1/2)				
S-LOC 5	840/24	496 (500-1/2)	840/50 496 (500-1)		
<b>C</b> CIRCLING	900-1	546 (600-1)	920-1 1/2 566 (600-1 1/2)	1120-2 1/2 766 (800-2 1/2)	1180-3 826 (900-3)

SE-4, 22 FEB 2024 to 21 MAR 2024

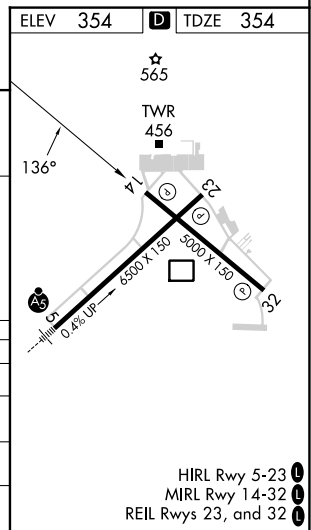
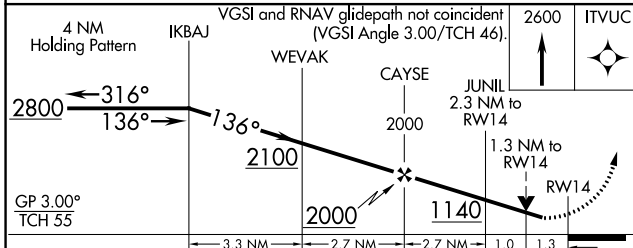
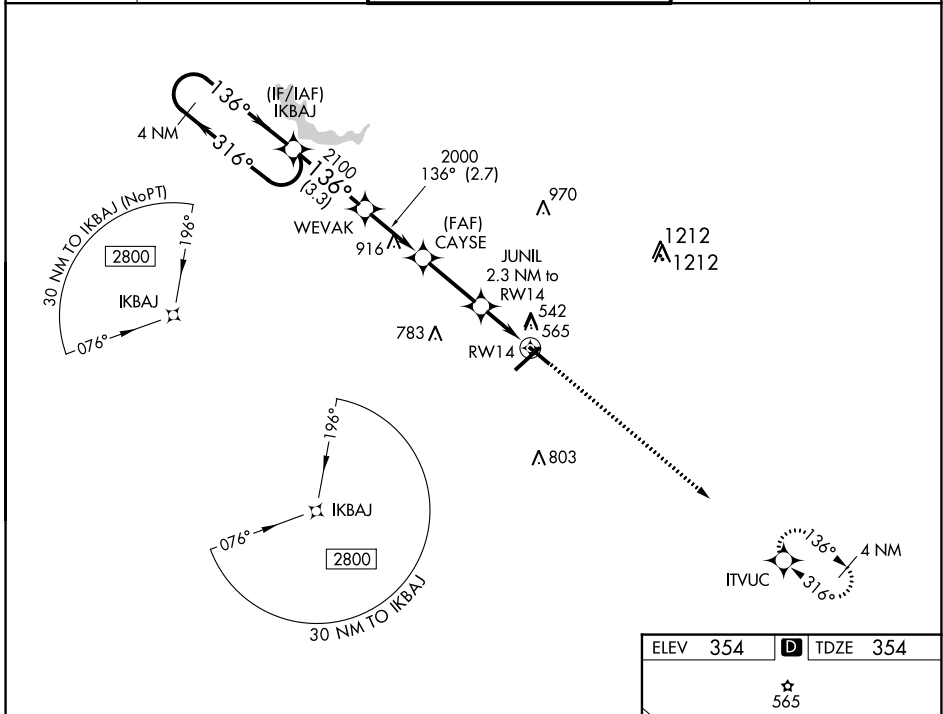
SE-4, 22 FEB 2024 to 21 MAR 2024

WAAS CH <b>90322</b> W14A	APP CRS <b>136°</b>	Rwy Idg <b>5000</b> TDZE <b>354</b> Apt Elev <b>354</b>
---------------------------------	------------------------	---

# RNAV (GPS) RWY 14

MIDDLE GEORGIA RGNL (MCN)

RNP APCH-GPS.		MISSED APPROACH: Climb to 2600 direct ITVUC and hold.		
⚠ For uncompensated Baro-VNAV systems, LNAV/VNAV NA below -8°C or above 54°C. Rwy 14 helicopter visibility reduction below 3/4 SM NA.				
ATIS <b>120.775</b>	ATLANTA APP CON ★ <b>124.2 279.6</b>	MACON TOWER ★ <b>128.2 (CTAF) 257.8</b>	GND CON <b>121.65</b>	UNICOM <b>122.95</b>



CATEGORY	A	B	C	D
LPV DA	652-1 298 (300-1)			
LNAV/VNAV DA	745-1¼ 391 (400-1¼)			
LNAV MDA	820-1	466 (500-1)	820-1¾	466 (500-1¾)
CIRCLING	900-1	546 (600-1)	920-1½	1120-2½
			566 (600-1½)	766 (800-2½)

SE-4, 22 FEB 2024 to 21 MAR 2024

SE-4, 22 FEB 2024 to 21 MAR 2024

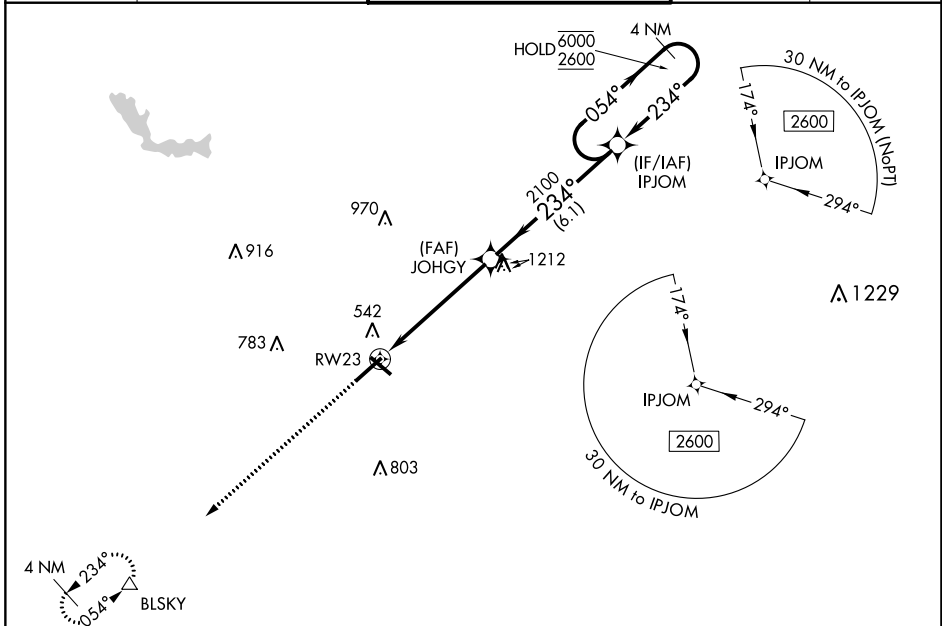
WAAS CH <b>40419</b> <b>W23A</b>	APP CRS <b>234°</b>	Rwy Idg TDZE Apt Elev	<b>6426</b> <b>354</b> <b>354</b>
--	------------------------	-----------------------------	---

# RNAV (GPS) RWY 23

MIDDLE GEORGIA RGNL (MCN)

RNP APCH.		MISSED APPROACH: Climb to 2600 direct BLSKY and hold.	

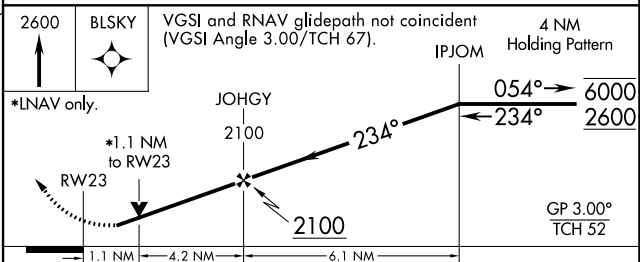
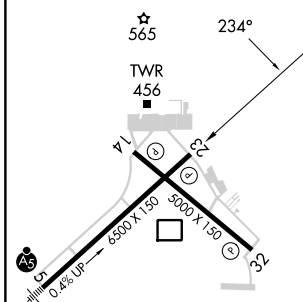
ATIS <b>120.775</b>	ATLANTA APP CON ★ <b>124.2 279.6</b>	MACON TOWER ★ <b>128.2 (CTAF) 257.8</b>	GND CON <b>121.65</b>	UNICOM <b>122.95</b>
------------------------	---	--	--------------------------	-------------------------



SE-4, 22 FEB 2024 to 21 MAR 2024

SE-4, 22 FEB 2024 to 21 MAR 2024

ELEV 354	<b>D</b>	TDZE 354
----------	----------	----------



*LNAV only. RWY 23 1.1 NM 4.2 NM 6.1 NM	JOHGY 2100 2100 2100	IPJOM 4 NM Holding Pattern 054° → 6000 ← 234° 2600 GP 3.00° TCH 52		
CATEGORY LPV DA LNAV/VNAV DA LNAV MDA CIRCLING	A 635-1 726-1¼ 760-1 900-1	B 281 (300-1) 372 (400-1¼) 406 (500-1) 546 (600-1)	C 760-1½ 920-1½ 566 (600-1½)	D 281 (300-1) 372 (400-1¼) 406 (500-1½) 766 (800-2½)

HIRL Rwy 5-23  
MIRL Rwy 14-32  
REIL Rwy 23, and 32

WAAS CH <b>63228</b> <b>W32A</b>	APP CRS <b>316°</b>	Rwy Idg TDZE Apt Elev	<b>5000</b> <b>351</b> <b>354</b>
--	------------------------	-----------------------------	---

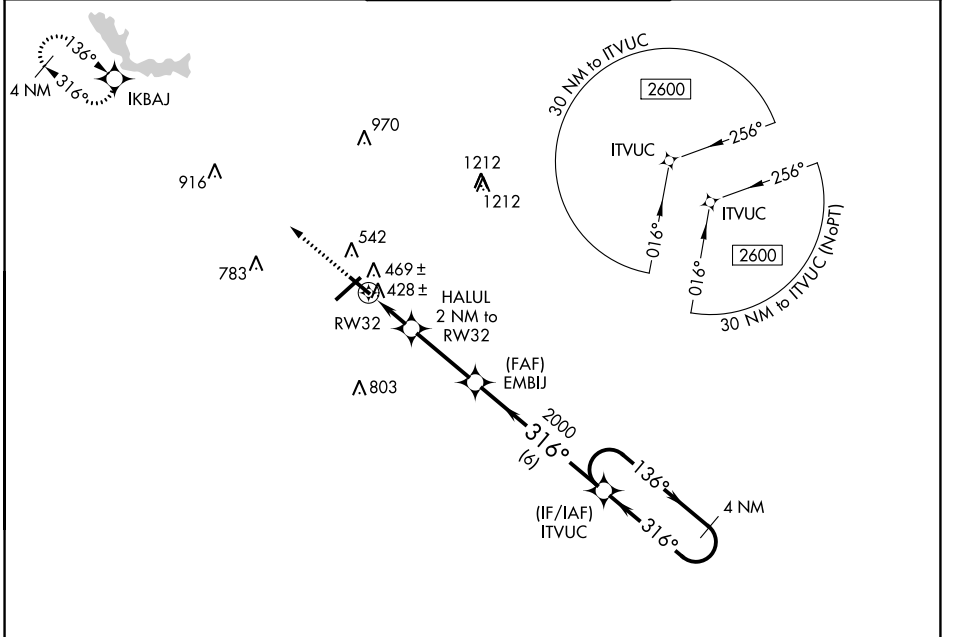
# RNAV (GPS) RWY 32

MIDDLE GEORGIA RGNL (MCN)

RNP APCH-GPS.

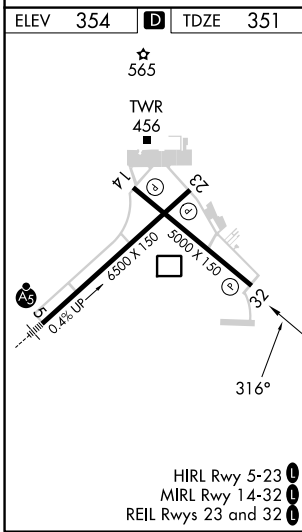
**⚠** Rwy 32 helicopter visibility reduction below 1 SM NA. MISSED APPROACH: Climb to 2800 direct IKBAJ and hold.

ATIS <b>120.775</b>	ATLANTA APP CON ★ <b>124.2 279.6</b>	MACON TOWER ★ <b>128.2 (CTAF) 257.8</b>	GND CON <b>121.65</b>	UNICOM <b>122.95</b>
------------------------	---	--	--------------------------	-------------------------

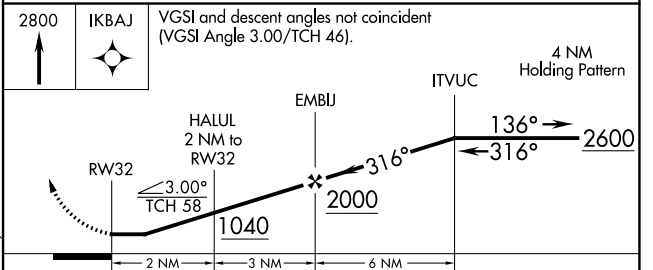


SE-4, 22 FEB 2024 to 21 MAR 2024

SE-4, 22 FEB 2024 to 21 MAR 2024



ELEV 354	<b>D</b> TDZE 351	1568 $\Delta$
----------	-------------------	---------------



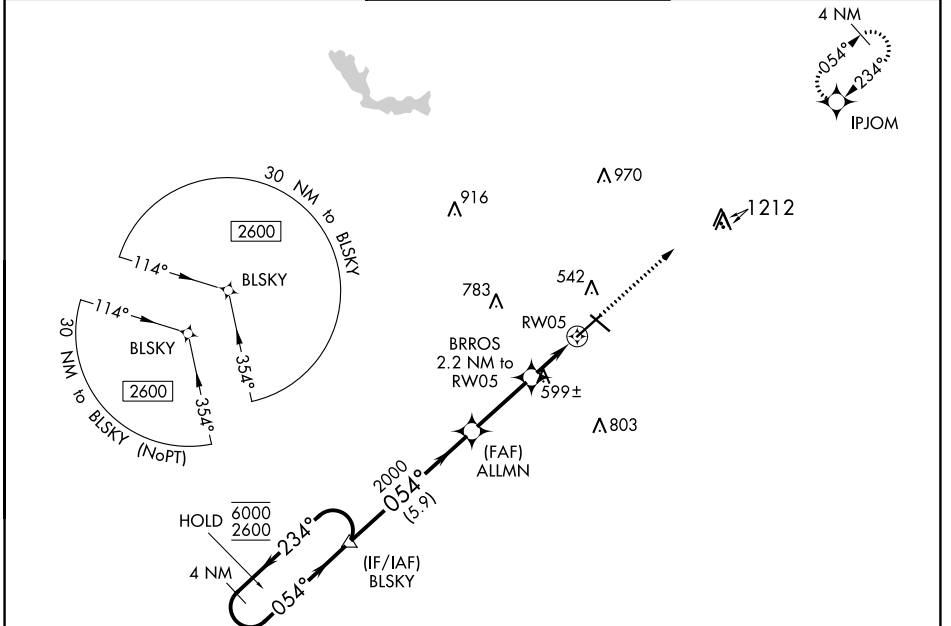
CATEGORY	A	B	C	D
LP MDA	680-1		329 (400-1)	
LNAV MDA	720-1		369 (400-1)	
<b>C</b> CIRCLING	900-1	546 (600-1)	920-1½ 566 (600-1½)	1120-2½ 766 (800-2½)

WAAS CH <b>97315</b> <b>W05A</b>	APP CRS <b>054°</b>	Rwy Idg TDZE <b>344</b> Apt Elev <b>354</b>
--	------------------------	---

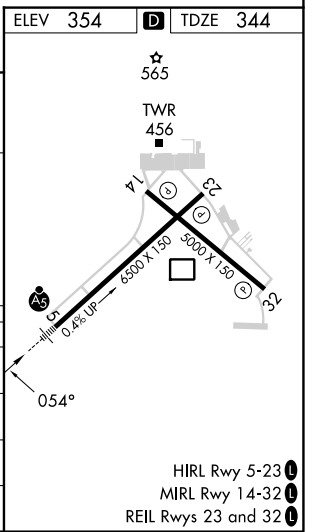
# RNAV (GPS) RWY 5

MIDDLE GEORGIA RGNL (MCN)

RNP APCH.		MALSR	MISSED APPROACH: Climb to 2600 direct IPJOM and hold.		
For uncompensated Baro-VNAV systems, LNAV/VNAV NA below -8°C or above 54°C.					
ATIS <b>120.775</b>	ATLANTA APP CON ★ <b>124.2 279.6</b>	MACON TOWER ★ <b>128.2 (CTAF) 257.8</b>	GND CON <b>121.65</b>	UNICOM <b>122.95</b>	



4 NM Holding Pattern		BLSKY	2600	IPJOM
6000	← 234°			
2600	→ 054°			
GP 3.00°		ALLMN	2000	*LNAV only.
TCH 56		BRROS	2.2 NM to RW05	
			*1.5 NM to RW05	
			*1080	
			RW05	
			0.7 NM	
			1.5 NM	
			5.9 NM	
			2.9 NM	



- HIRL Rwy 5-23
- MIRL Rwy 14-32
- REIL Rwy 23 and 32

SE-4, 22 FEB 2024 to 21 MAR 2024

SE-4, 22 FEB 2024 to 21 MAR 2024