

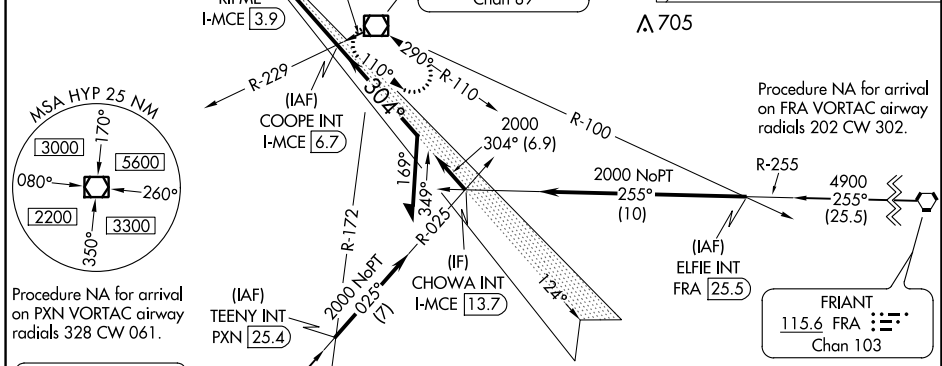
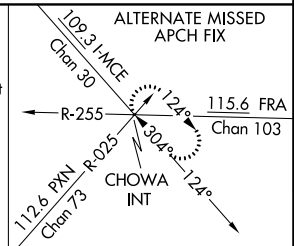
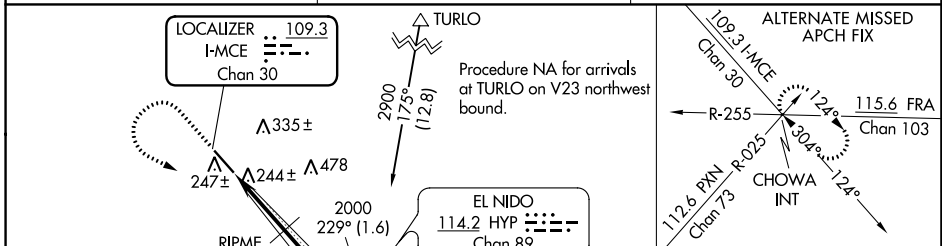
LOC/DME I-MCE 109.3 Chan 30	APP CRS 304°	Rwy Idg TDZE 155 Apt Elev 155
--	------------------------	---

ILS or LOC RWY 30

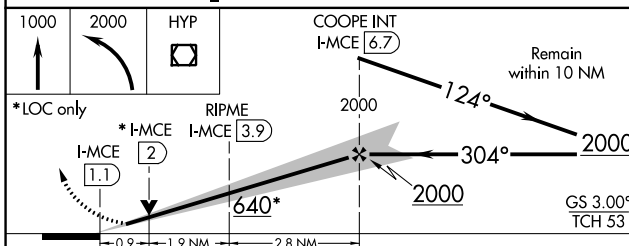
MERCED YOSEMITE RGNL (MCE)

<p>NA For inop ALS, increase S-LOC visibility to 1 SM.</p>	<p>MALSRL</p>	<p>MISSED APPROACH: Climb to 1000 then climbing left turn to 2000 direct HYP VOR/DME and hold.</p>
---	---------------	--

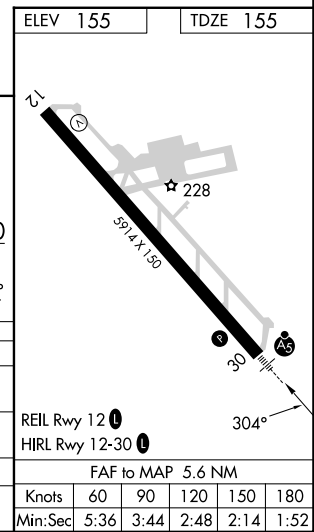
ASOS 132.175	NORCAL APP CON 120.95 269.45	UNICOM 122.7 (CTAF)
------------------------	--	-------------------------------



ELEV 155	TDZE 155
----------	----------



CATEGORY	A	B	C	D
S-ILS 30		355-½	200 (200-½)	
S-LOC 30	640-¾	485 (500-¾)	640-1	485 (500-1)
RIPME FIX MINIMUMS				
S-LOC 30		500-¾	345 (400-¾)	



SW-2, 22 FEB 2024 to 21 MAR 2024

SW-2, 22 FEB 2024 to 21 MAR 2024

LOC/DME I-MCE 109.3 Chan 30	APP CRS 123°	Rwy Idg TDZE 155 Apt Elev 155
--	------------------------	---

LOC BC RWY 12

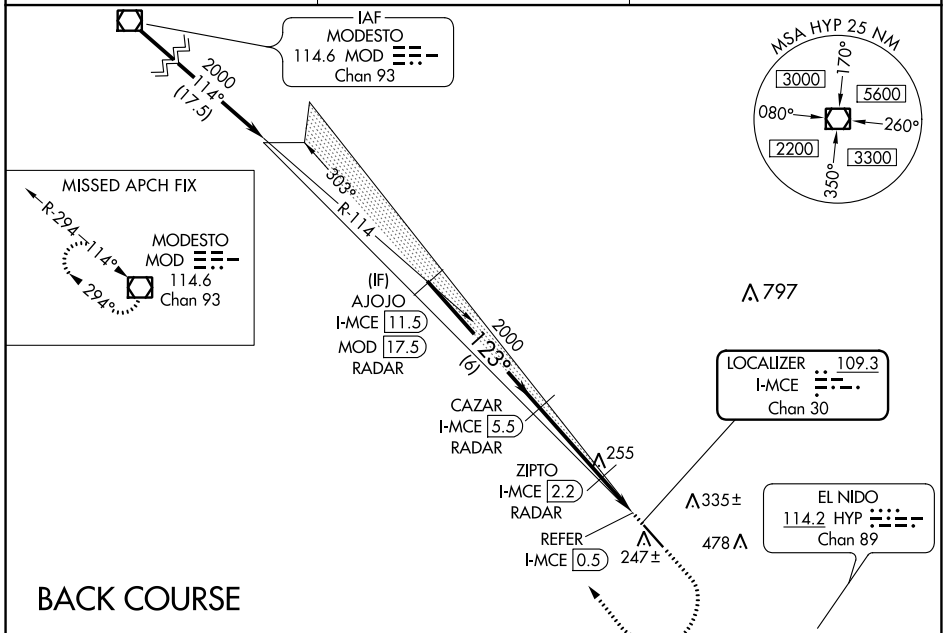
MERCED YOSEMITE RGNL (MCE)

DME or RADAR required.

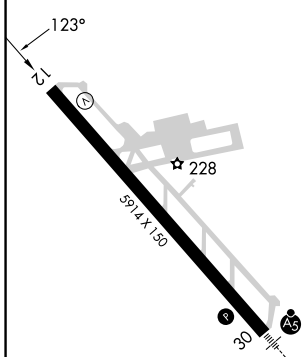
▼ Rwy 12 helicopter visibility reduction below 3/4 SM NA.
 ▲NA Circling NA northeast of Rwy 12-30.

MISSED APPROACH: Climb to 1000 then climbing right turn to 3000 direct MOD VOR/DME and hold.

ASOS 132.175	NORCAL APP CON 120.95 269.45	UNICOM 122.7 (CTAF) 0
------------------------	--	---------------------------------



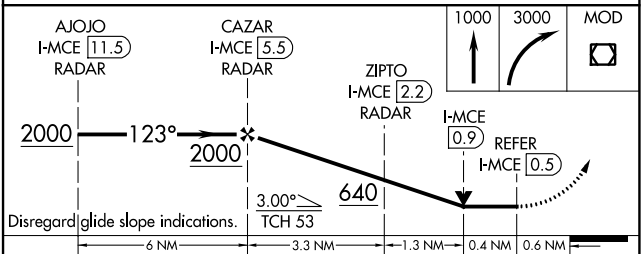
ELEV 155	TDZE 155
----------	----------



REIL Rwy 12 0
 HIRL Rwy 12-30 0

FAF to MAP 5 NM

Knots	60	90	120	150	180
Min:Sec	5:00	3:20	2:30	2:00	1:40



CATEGORY	A	B	C	D
S-12	640-1	485 (500-1)	640-1 3/8	485 (500-1 3/8)
C CIRCLING	640-1	485 (500-1)	640-1 1/2	720-2 485 (500-1 1/2) 565 (600-2)
ZIPTO FIX MINIMUMS				
S-12	520-1 365 (400-1)	NA		
C CIRCLING	560-1 405 (500-1)	620-1 465 (500-1)	620-1 1/2 465 (500-1 1/2)	720-2 565 (600-2)

SW-2, 22 FEB 2024 to 21 MAR 2024

SW-2, 22 FEB 2024 to 21 MAR 2024

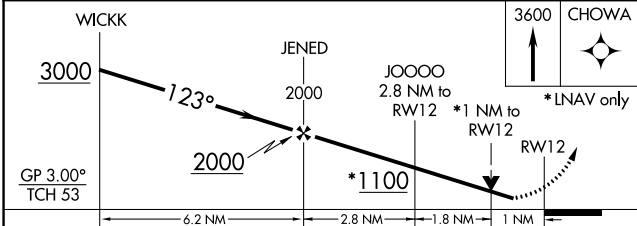
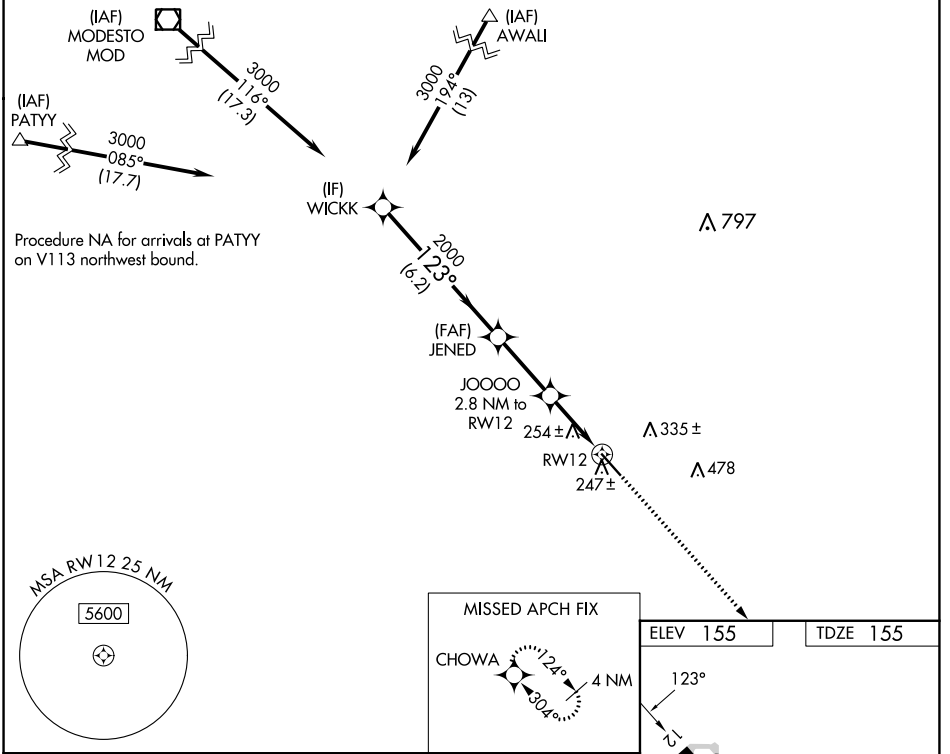
WAAS CH 93923 W12A	APP CRS 123°	Rwy Idg 5914 TDZE 155 Apt Elev 155
--	------------------------	---

RNAV (GPS) RWY 12

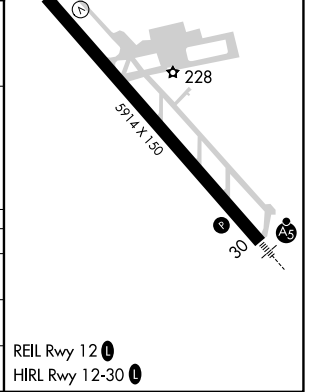
MERCED YOSEMITE RGNL (MCE)

RNP APCH. ▼ Rwy 12 helicopter visibility reduction below 3/4 SM NA. For uncompensated Baro-VNAV systems, LNAV/VNAV NA below -3°C or above 54°C.	MISSED APPROACH: Climb to 3600 direct CHOWA and hold.
--	---

ASOS 132.175	NORCAL APP CON 120.95 269.45	UNICOM 122.7 (CTAF) 0
------------------------	--	---------------------------------



CATEGORY	A	B	C	D
LPV DA		405-3/4	250 (300-3/4)	
LNAV/VNAV DA		434-7/8	279 (300-7/8)	
LNAV MDA		520-1	365 (400-1)	



SW-2, 22 FEB 2024 to 21 MAR 2024

SW-2, 22 FEB 2024 to 21 MAR 2024

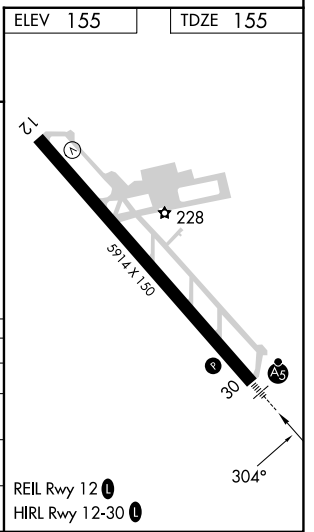
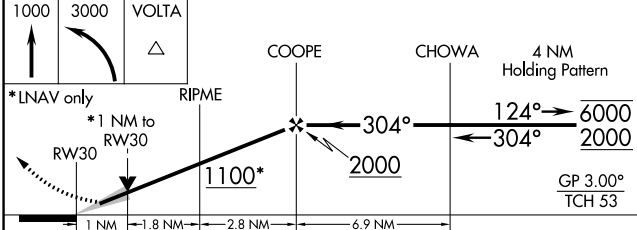
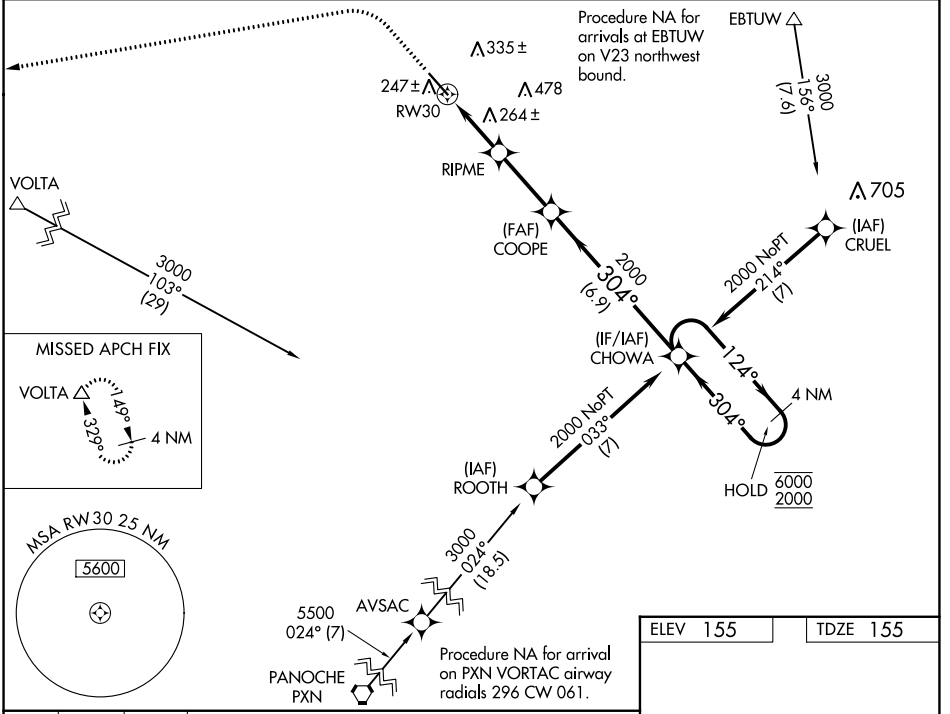
WAAS CH 93709 W30A	APP CRS 304°	Rwy Idg TDZE 155 Apt Elev 155	5914
--	------------------------	---	-------------

RNAV (GPS) RWY 30

MERCED YOSEMITE RGNL (MCE)

RNP APCH.	MALSR	MISSED APPROACH: Climb to 1000 then climbing left turn to 3000 direct VOLTA and hold.
<p>▼ For uncompensated Baro-VNAV systems, LNAV/VNAV NA below -3°C or above 54°C. For inoperative ALS, increase LNAV Cats C/D visibility to 1 3/8 SM. Circling NA northeast of Rwy 12-30.</p>		

ASOS 132.175	NORCAL APP CON 120.95 269.45	UNICOM 122.7 (CTAF) 0
------------------------	--	---------------------------------



CATEGORY	A	B	C	D
LPV DA		355-1/2	200 (200-1/2)	
LNAV/VNAV DA		544-5/8	389 (400-5/8)	
LNAV MDA	520-1/2 365 (400-1/2)		520-5/8 365 (400-5/8)	
CIRCLING	560-1 405 (500-1)	620-1 465 (500-1)	620-1 1/2 465 (500-1 1/2)	720-2 565 (600-2)

SW-2, 22 FEB 2024 to 21 MAR 2024

SW-2, 22 FEB 2024 to 21 MAR 2024