

LOC I-LWB 110.35	APP CRS 045°	Rwy Idg 7003
		TDZE 2288
		Apt Elev 2302


ILS or LOC RWY 4

GREENBRIER VALLEY (LWB)

RNAV 1-GPS required.
ADF or DME required for LOC only.

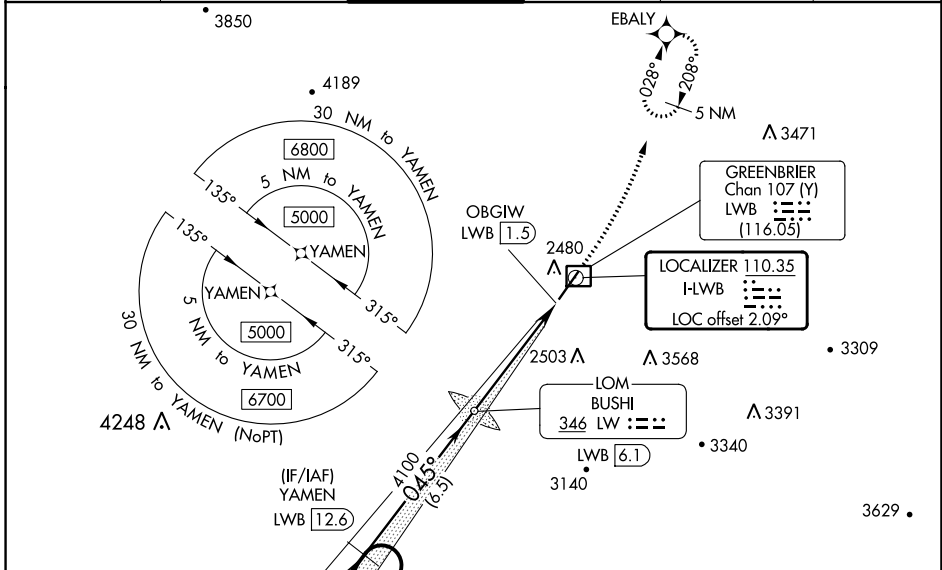
⚠ Autopilot coupled approach NA below 2700. Rwy 4 helicopter visibility reduction below $\frac{3}{4}$ SM NA. For inop ALS increase S-ILS 4 all Cats visibility to $\frac{7}{8}$ SM, increase S-LOC 4 Cats A/B to $1\frac{1}{8}$ SM.

MALSRL



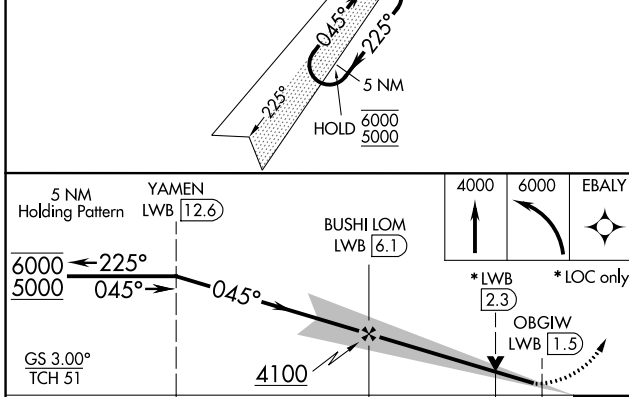
MISSED APPROACH: Climb to 4000 then climbing left turn to 6000 direct EBALY and hold, continue climb-in-hold to 6000.

ATIS ★ 121.4	WASHINGTON CENTER 134.4 353.9	LEWISBURG TOWER★ 118.9 (CTAF) 0	GND CON 121.9	CLNC DEL 125.725 (When twr closed)	UNICOM 122.95
------------------------	---	---	-------------------------	---	-------------------------



NE-4, 22 FEB 2024 to 21 MAR 2024

NE-4, 22 FEB 2024 to 21 MAR 2024



ELEV 2302	D TDZE 2288
-----------	--------------------

TWR 2357
7003 x 150
045°

REIL Rwy 22 **1**
HIRL Rwy 4-22 **1**

FAF to MAP 4.6 NM					
Knots	60	90	120	150	180
Min:Sec	4:36	3:04	2:18	1:50	1:32

CATEGORY	A	B	C	D
S-ILS 4		2559- $\frac{3}{4}$	271 (300- $\frac{3}{4}$)	
S-LOC 4		2720- $\frac{3}{4}$	432 (500- $\frac{3}{4}$)	
C CIRCLING	2840-1 538 (600-1)	3040-1 738 (800-1)	3280-3 978 (1000-3)	3680-3 1378 (1400-3)

WAAS CH 99441 W22A	APP CRS 223°	Rwy Idg TDZE Apt Elev	7003 2302 2302
--	------------------------	-----------------------------	---

RNAV (GPS) RWY 22

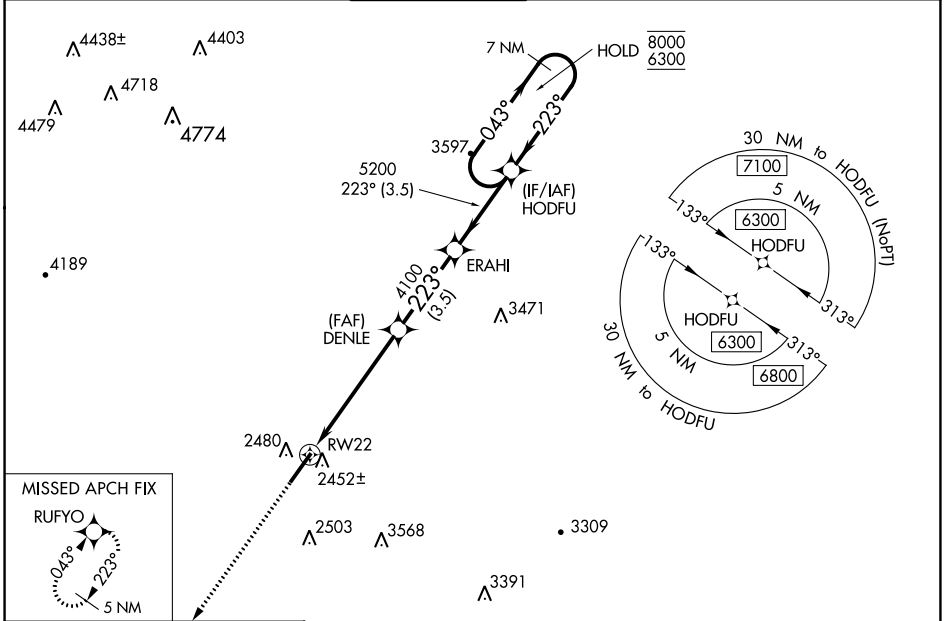
GREENBRIER VALLEY (LWB)

RNP APCH.

⚠ Rwy 22 helicopter visibility reduction below 3/4 SM NA.
For uncompensated Baro-VNAV systems, LNAV/VNAV
NA below -19°C or above 52°C.

MISSED APPROACH: Climb to 5000 direct RUFYO and hold.

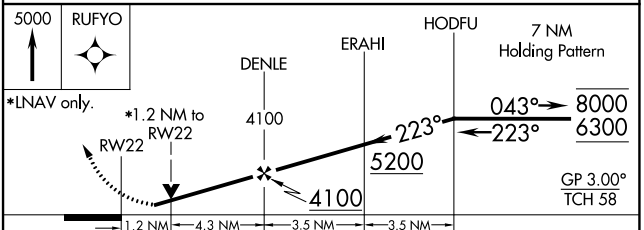
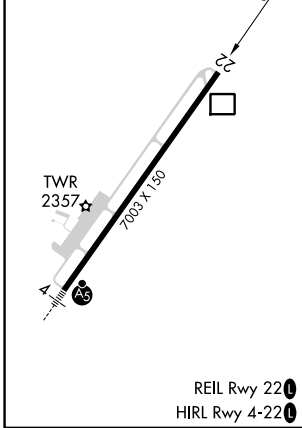
ATIS* 121.4	WASHINGTON CENTER 134.4 353.9	LEWISBURG TOWER* 118.9 (CTAF) 0	GND CON 121.9	CLNC DEL 125.725 (When twr closed)	UNICOM 122.95
-----------------------	---	---	-------------------------	---	-------------------------



NE-4, 22 FEB 2024 to 21 MAR 2024

NE-4, 22 FEB 2024 to 21 MAR 2024

ELEV 2302	D	TDZE 2302
-----------	----------	-----------



CATEGORY	A	B	C	D
LPV DA		2614-7/8	312 (400-7/8)	
LNAV/VNAV DA		2723-1/4	421 (500-1/4)	
LNAV MDA	2720-1	418 (500-1)	2720-1/8	418 (500-1/8)
C CIRCLING	2840-1 538 (600-1)	3040-1 738 (800-1)	3280-3 978 (1000-3)	3580-3 1278 (1300-3)

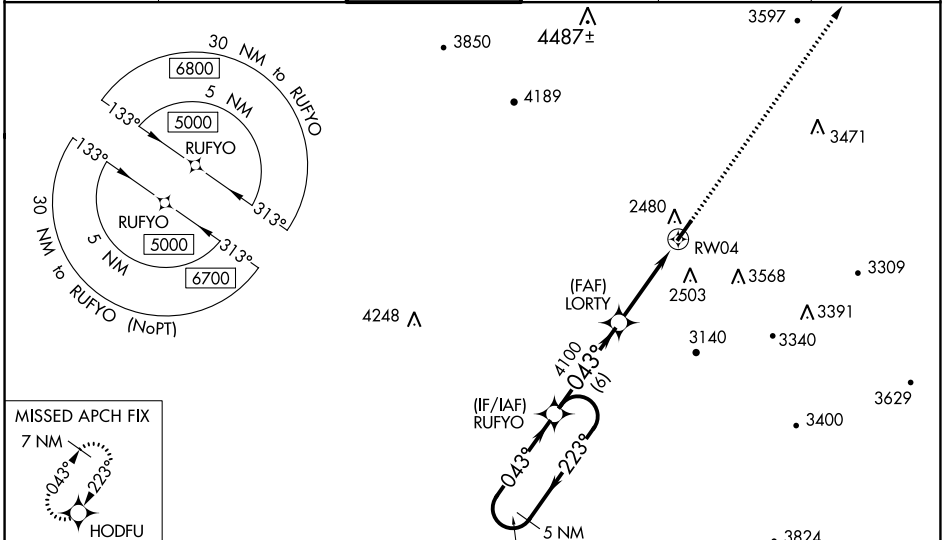
WAAS CH 42613 W04A	APP CRS 043°	Rwy Idg TDZE 2288 Apt Elev 2302
--	------------------------	---

RNAV (GPS) RWY 4

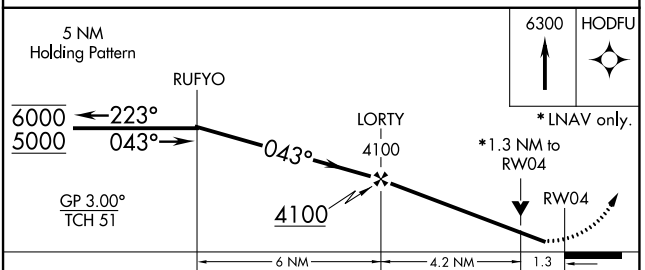
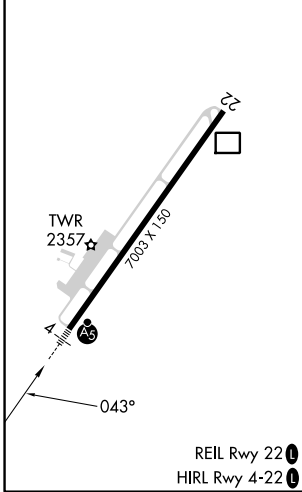
GREENBRIER VALLEY (LWB)

RNP APCH.		MISSED APPROACH: Climb to 6300 direct HODFU and hold, continue climb-in-hold to 6300.
Rwy 4 helicopter visibility reduction below 3/4 NA. For uncompensated Baro-VNAV systems, LNAV/VNAV NA below -19°C or above 54°C. For inop ALS, increase LNAV Cats A/B visibilities to 1 SM, Cats C/D to 1/2 SM, and increase LPV all Cats visibilities to 7/8 SM.		

ATIS* 121.4	WASHINGTON CENTER 134.4 353.9	LEWISBURG TOWER* 118.9 (CTAF) 0	GND CON 121.9	CLNC DEL 125.725 (When twr closed)	UNICOM 122.95
-----------------------	---	---	-------------------------	---	-------------------------



ELEV 2302	D	TDZE 2288
-----------	----------	-----------



CATEGORY	A	B	C	D
LPV DA		2559-3/4	271 (300-3/4)	
LNAV/VNAV DA		2738-7/8	450 (500-7/8)	
LNAV MDA	2760-3/4	472 (500-3/4)	2760-1	472 (500-1)
<input checked="" type="checkbox"/> CIRCLING	2840-1 538 (600-1)	3040-1 738 (800-1)	3280-3 978 (1000-3)	3680-3 1378 (1400-3)

NE-4, 22 FEB 2024 to 21 MAR 2024

NE-4, 22 FEB 2024 to 21 MAR 2024