

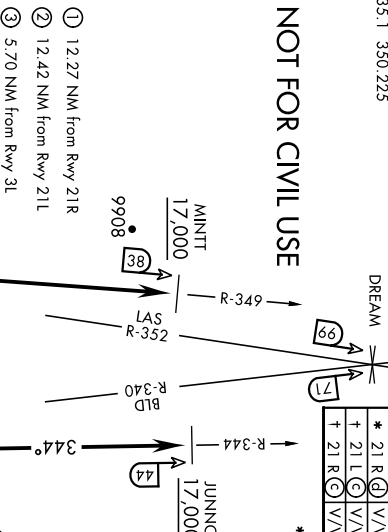
**DREAM SEVEN DEPARTURE (DREAM7 • DREAM)**

NELLIS AFB (KLSV)  
LAS VEGAS, NEVADA

		[USAFI]					
Rwy	Knobs	60	120	180	240	300	360
* 3 L (G)	V/V/(fpm)	305	610	915	1220	1525	1830
* 3 L R (B)	V/V/(fpm)	251	502	753	1004	1255	1506
† 3 L R (C)	V/V/(fpm)	498	996	1494	1992	2490	2988
† 3 R (C)	V/V/(fpm)	496	992	1488	1984	2480	2976
* 21 L (D)	V/V/(fpm)	387	774	1161	1548	1935	2322
* 21 R (D)	V/V/(fpm)	393	786	1179	1572	1965	2358
† 21 L (C)	V/V/(fpm)	453	906	1359	1812	2265	2718
† 21 R (C)	V/V/(fpm)	457	914	1371	1828	2285	2742

**NOT FOR CIVIL USE**

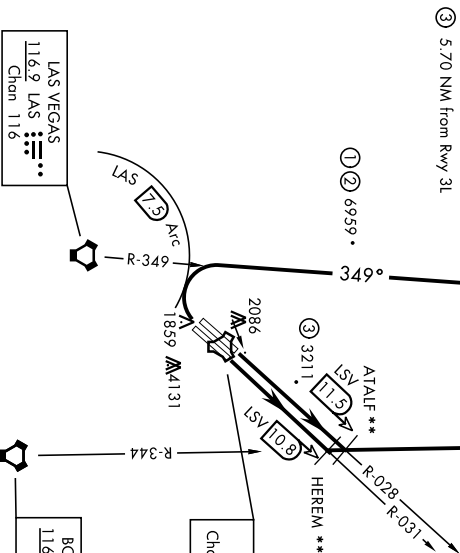
**TOP ALTITUDE:  
FL190**



- Ⓒ to 3600
- Ⓓ to 3300
- Ⓔ to 17,000
- Ⓕ to 8900

CAUTION: If unable to comply with restrictions advise ATC prior to departure.

\*\* Lead DME:  
ATLAF - LSV 9.5  
HEREM - LSV 8.8



**DEPARTURE ROUTE DESCRIPTION**

**TAKEOFF RMY 3L:** Fly runway heading to intercept the LSV TACAN R-028 then direct ATLAF, intercept the BLD VORTAC R-344 then direct JUNNO, cross JUNNO at or above 17,000, thence...  
**TAKEOFF RMY 3R:** Fly runway heading to intercept the LSV TACAN R-031 then direct HEREM, intercept the BLD VORTAC R-344 then direct JUNNO, cross JUNNO at or above 17,000, thence...  
**TAKEOFF RMY 21L/R:** Turn right to intercept LAS VORTAC R-349 outbound. Remain North of LAS 7.5 DME turning Northbound. Intercept LAS R-349 between 5000 and 6000, do not proceed West of LAS R-349. Cross MINTT at above 17,000, thence...  
 ...maintain FL190, then via assigned route.

**NOISE ABATEMENT PROCEDURES:** Fly IAW Nellis Noise Abatement instructions published in AP/1.

**DREAM SEVEN DEPARTURE (DREAM7 • DREAM)**

LAS VEGAS, NEVADA  
NELLIS AFB (KLSV)

RADAR required

TOP ALTITUDE:  
FL200

Rwy	Knots	60	120	180	240	300	360
3L (A)	V/V(fpm)	372	744	1116	1488	1860	2232
3R (B)	V/V(fpm)	384	768	1152	1536	1920	2304
21L (C)	V/V(fpm)	392	784	1176	1568	1960	2352
21R (C)	V/V(fpm)	394	788	1182	1576	1970	2364

Minimum Climb Rate

- (A) to 10,000
- (B) to 10,400
- (C) to 13,600

ATIS  
270.1  
CLNC DEL  
120.9 289.4  
GND CON  
121.8 275.8  
TOWER  
132.55 327.0  
NELLIS CONTROL  
119.35 254.4  
DEP CON  
135.1 350.225

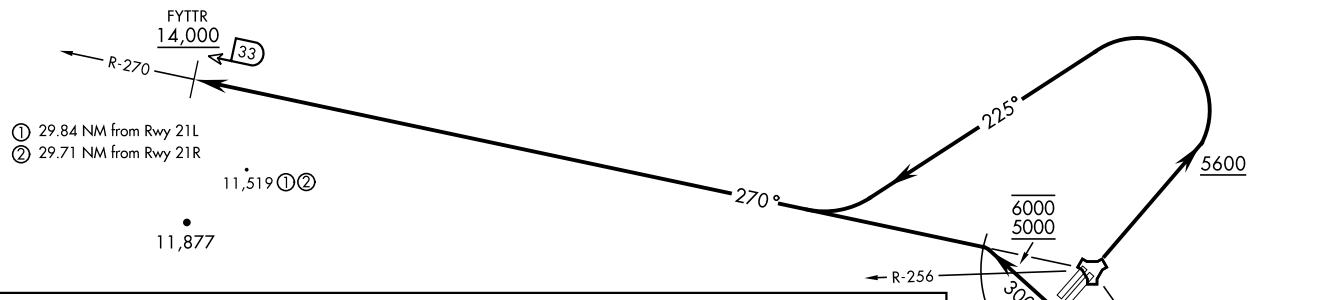
CAUTION: If unable to comply with restrictions advise ATC prior to departure.

FYTR SEVEN DEPARTURE (FYTR7 • FYTR)

LAS VEGAS, NEVADA  
NELLIS AFB (KLSV)

FYTR SEVEN DEPARTURE (FYTR7 • FYTR)

[USAF] NELLIS AFB (KLSV)  
LAS VEGAS, NEVADA



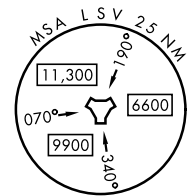
DEPARTURE ROUTE DESCRIPTION

**TAKEOFF RWY 3L/R:** Fly runway heading until reaching 5600, then climbing left turn heading 225° to intercept LSV TACAN R-270 outbound. Cross FYTR at or above 14,000, thence...

**TAKEOFF RWY 21L/R:** Turn right heading 300° to intercept LSV TACAN R-270, remain within LSV 4 DME until joining LSV R-270, cross LSV R-256 between 5000 and 6000. Cross FYTR at or above 14,000, thence...

...maintain FL200 or as assigned by ATC, then via assigned route. Expect filed altitude 10 minutes after departure.

**NOISE ABATEMENT PROCEDURES:** Fly IAW Nellis Noise Abatement instructions published in AP/1.



24025

# WORMON MESA EIGHT DEPARTURE (MMMM8 • MMM)

NELLIS AFB (KLSV)  
LAS VEGAS, NEVADA

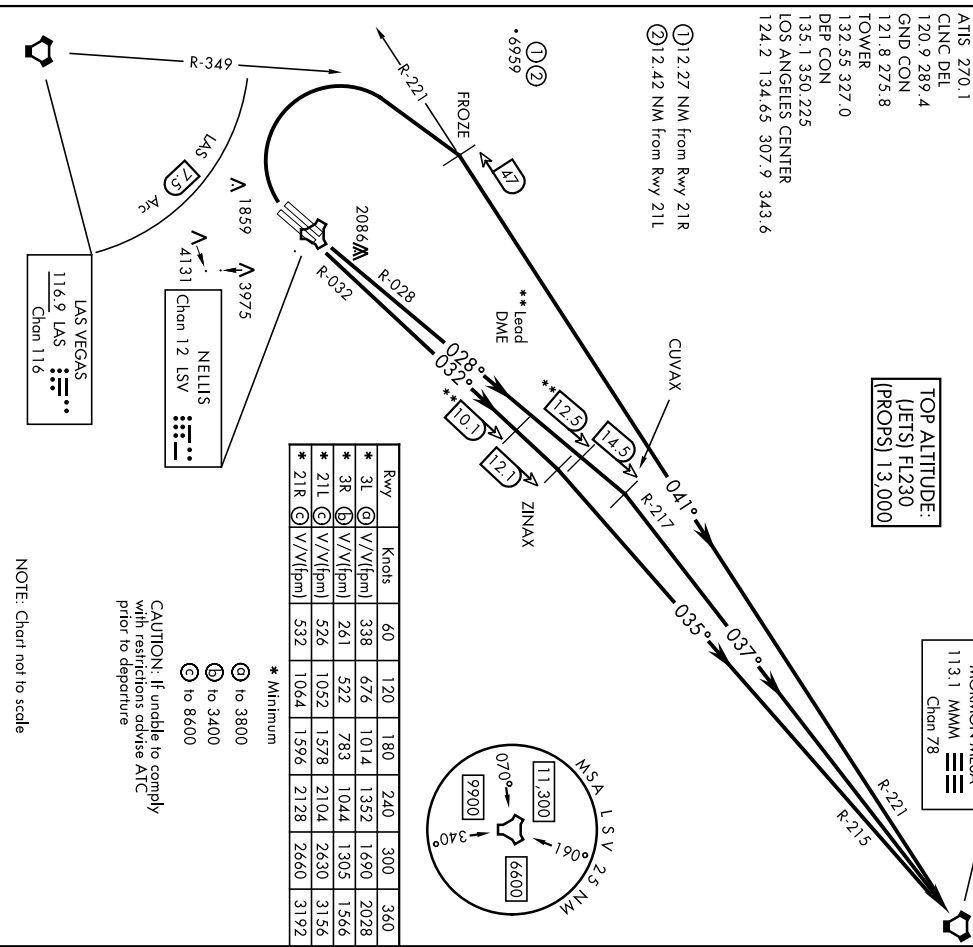
[USAF]

TOP ALTITUDE:  
(JETS) FL230  
(PROPS) 13,000

WORMON MESA  
113.1 MMM  
Chan 78

• 9485

ATIS 270.1  
CLINC DEL  
120.9 289.4  
GND CON  
121.8 275.8  
TOWER  
132.55 327.0  
DEP CON  
135.1 350.225  
LOS ANGELES CENTER  
124.2 134.65 307.9 343.6



SW-4, 22 FEB 2024 to 21 MAR 2024

SW-4, 22 FEB 2024 to 21 MAR 2024

## DEPARTURE ROUTE DESCRIPTION

▼ TAKEOFF RWY 3L: Fly runway heading to intercept LSV TACAN R-028 then direct CUVAX, intercept the MMM VORTAC R-217 then direct MMM, hence...

TAKEOFF RWY 3R: Fly runway heading to intercept LSV TACAN R-032 then direct ZINAX, intercept the MMM VORTAC R-215 then direct MMM, hence...

TAKEOFF RWY 21L/R: Turn right to intercept MMM VORTAC R-221 prior to MMM 47 DME (FROZE), remain north of the LAS VORTAC 7.5 DME, remain East of LAS R-349, intercept MMM R-221 then direct MMM, hence...

...turbopets maintain FL230 (or requested altitude if lower), props maintain 13,000 (or requested altitude if lower), then via assigned route. Expect filed altitude 10 minutes after departure.

NOISE ABATEMENT PROCEDURES: Fly LAW Nellis Noise Abatement instructions published in AP/1.

# WORMON MESA EIGHT DEPARTURE (MMMM8 • MMM)

Amth 7 ZSIAN24

LAS VEGAS, NEVADA  
NELLIS AFB (KLSV)