

APP CRS	Rwy Idg	4000
173°	TDZE	915
	Apt Elev	915

RNAV (GPS) RWY 17

LAWRENCE SMITH MEML (L.R.Y)

RNP APCH.

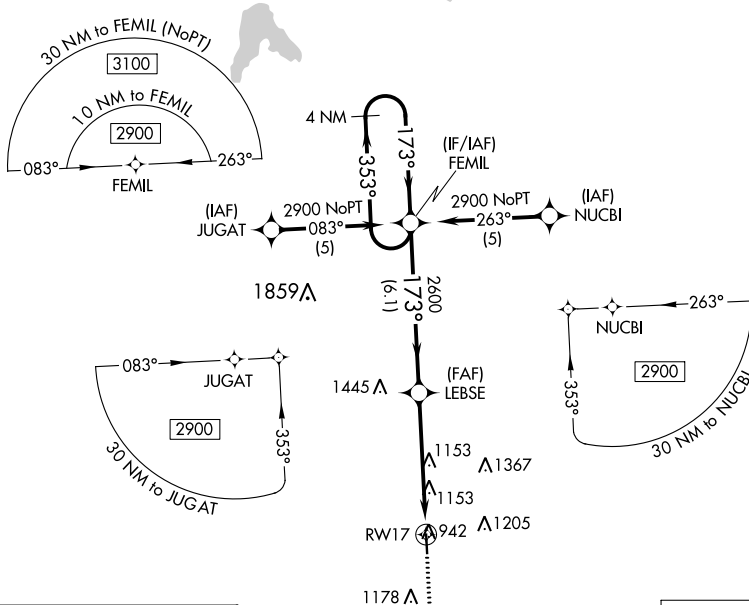
⚠ When local altimeter setting not received, use Charles B Wheeler Downtown altimeter setting: increase all MDAs 100 feet and visibility Cat C ¼ mile. Procedure NA at night. Rwy 17 helicopter visibility reduction below 1 SM NA.

MISSED APPROACH: Climb to 2600 direct HOWIF and hold.

AWOS-3PT
119.975

KANSAS CITY CENTER
125.55 327.0

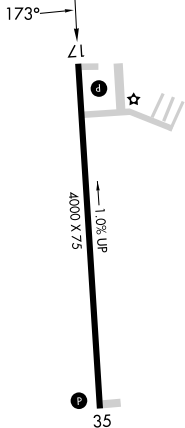
UNICOM
123.0 (CTAF) 0



NC-3, 22 FEB 2024 to 21 MAR 2024

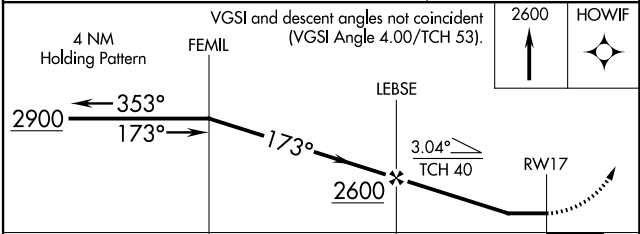
NC-3, 22 FEB 2024 to 21 MAR 2024

ELEV 915 **D** TDZE 915



MIRL Rwy 17-35 0

MISSED APCH FIX



CATEGORY	A	B	C	D
LNAV MDA	1420-1	505 (600-1)	1420-1½ 505 (600-1½)	NA
CIRCLING	1420-1 505 (600-1)	1460-1 545 (600-1)	1520-1¾ 605 (700-1¾)	NA

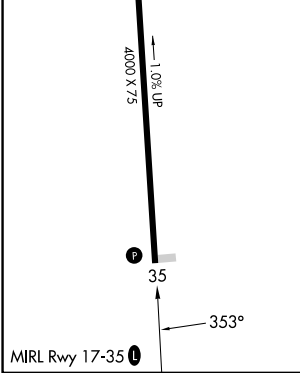
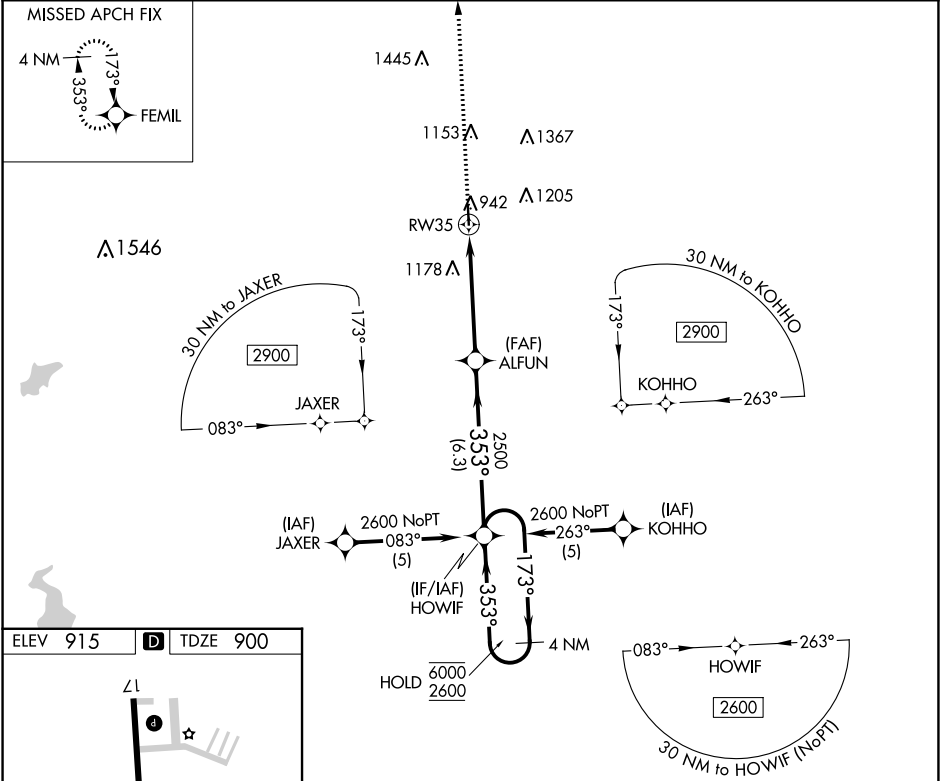
APP CRS	Rwy Idg	4000
353°	TDZE	900
	Apt Elev	915

RNAV (GPS) RWY 35

LAWRENCE SMITH MEML (L.R.Y)

RNP APCH.	MISSED APPROACH: Climb to 3000 direct FEMIL and hold.
<p>V Procedure NA at night.</p> <p>A Rwy 35 helicopter visibility reduction below 1 SM NA.</p>	

AWOS-3PT 119.975	KANSAS CITY CENTER 125.55 327.0	UNICOM 123.0 (CTAF)
----------------------------	---	-------------------------------



3000	FEMIL	VGSI and descent angles not coincident (VGSI Angle 3.00/TCH 47).		
		HOWIF	4 NM Holding Pattern	
	RW35	ALFUN	HOWIF	
		3.04° TCH 40	173° → 6000	
		353°	← 353° 2600	
		2500		
		4.9 NM	6.3 NM	
CATEGORY	A	B	C	D
LNAV MDA	1380-1	480 (500-1)	1380-1 3/8 480 (500-1 3/8)	NA
CIRCLING	1400-1 485 (500-1)	1460-1 545 (600-1)	1520-1 3/4 605 (700-1 3/4)	NA

NC-3, 22 FEB 2024 to 21 MAR 2024

NC-3, 22 FEB 2024 to 21 MAR 2024