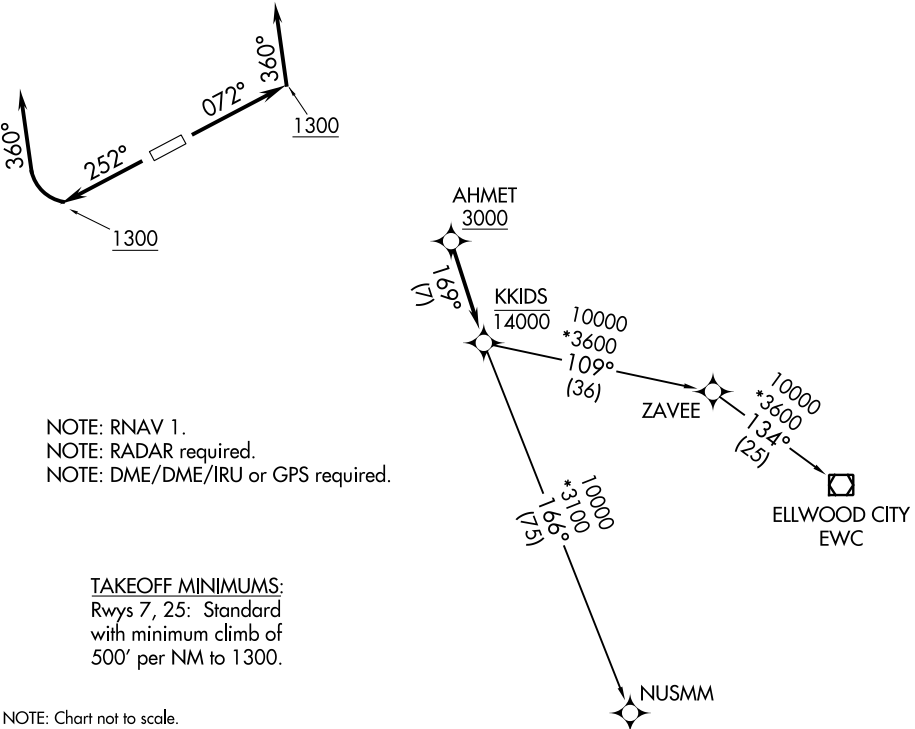


ASOS
118.925
CLNC DEL
125.7
CTAF
122.7
CLEVELAND DEP CON
125.35 346.325

TOP ALTITUDE:
ASSIGNED BY ATC



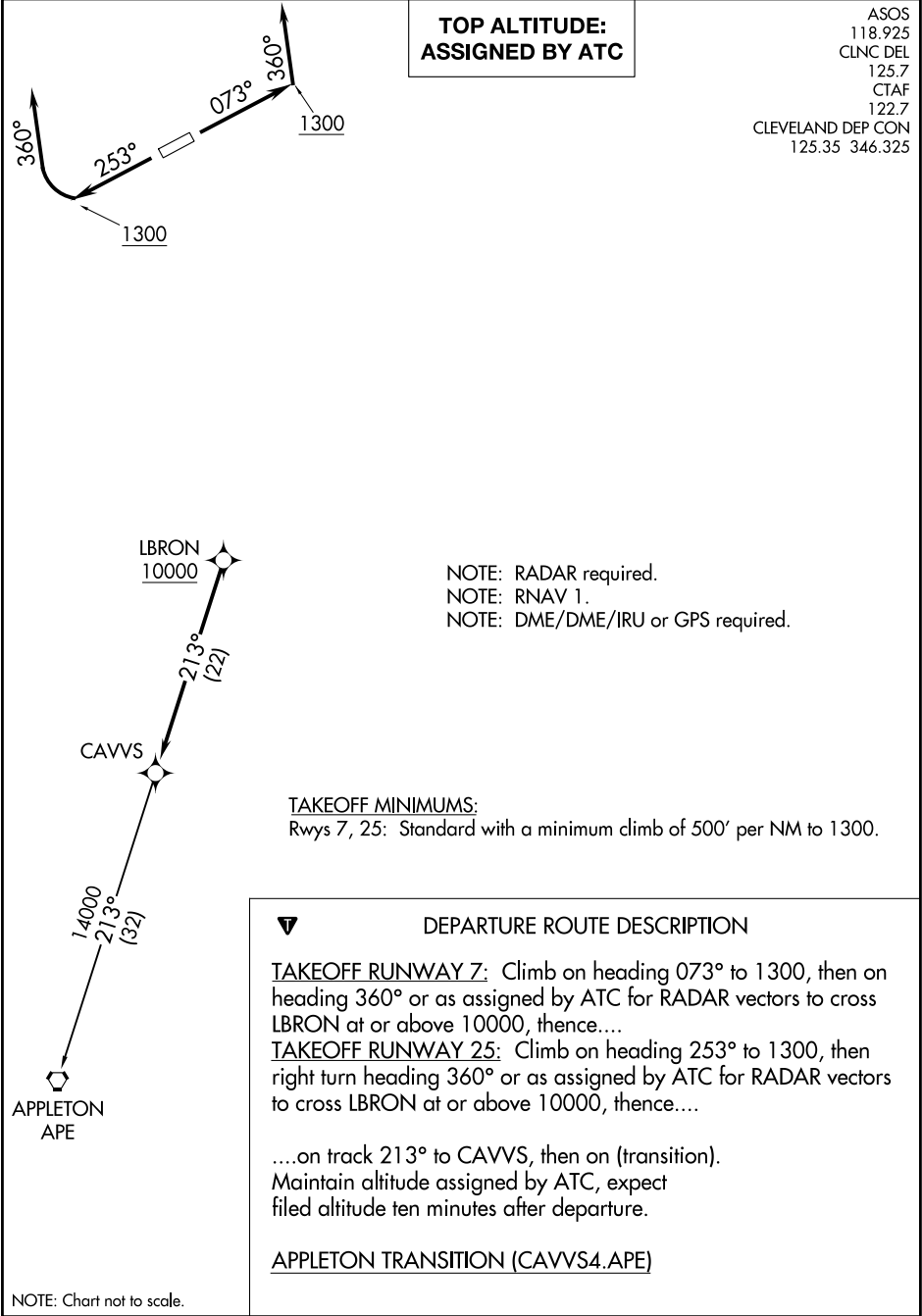
DEPARTURE ROUTE DESCRIPTION

TAKEOFF RUNWAY 7: Climb on heading 072° to 1300, then on heading 360° or as assigned by ATC for RADAR vectors to cross AHMET at or above 3000, thence....

TAKEOFF RUNWAY 25: Climb on heading 252° to 1300, then right turn on heading 360° or as assigned by ATC for RADAR vectors to cross AHMET at or above 3000, thence....

....on track 169° to cross KKIDS at or below 14000, then on (transition).
Maintain altitude assigned by ATC, expect filed altitude ten minutes after departure.

ELLWOOD CITY TRANSITION (AHMET4.EWC)
NUSMM TRANSITION (AHMET4.NUSMM)



GTIKE FOUR DEPARTURE (RNAV)
(GTLKE4.GTIKE) 26MAR20

LORAIN COUNTY RGNL (LPR)
LORAIN/EVRIA, OHIO

ASOS
118.925
CLNC DEL
125.7
CTAF
122.7
CLEVELAND DEP CON
125.35 346.325

**TOP ALTITUDE:
ASSIGNED BY ATC**



DEPARTURE ROUTE DESCRIPTION

TAKEOFF RUNWAY 7: Climb on heading 073° to 1300, then on heading 360° or as assigned by ATC for RADAR vectors to cross AYYLE at or above 9000, thence....

TAKEOFF RUNWAY 25: Climb on heading 253° to 1300, then right turn heading 360° or as assigned by ATC for RADAR vectors to cross AYYLE at or above 9000, thence....

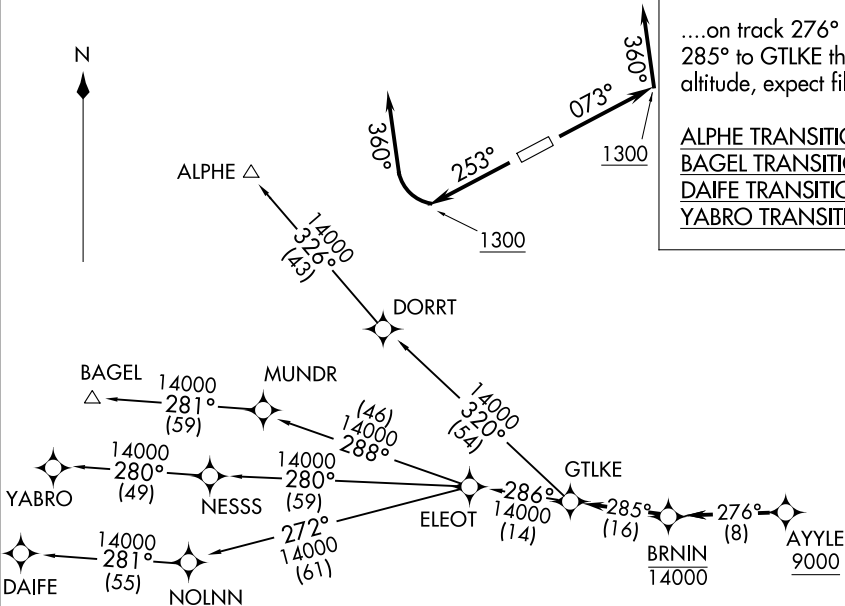
....on track 276° to cross BRNIN at or below 14000, then on track 285° then on (transition). Maintain ATC assigned altitude, expect filed altitude 10 minutes after departure.

ALPHE TRANSITION (GTLKE4.ALPHE)
BAGEL TRANSITION (GTLKE4.BAGEL)
DAIFE TRANSITION (GTLKE4.DAIFE)
YABRO TRANSITION (GTLKE4.YABRO)

NOTE: RADAR required.
NOTE: RNAV 1.
NOTE: DME/DME/IRU or GPS required.
NOTE: BAGEL TRANSITION: For aircraft landing MDW only, or as assigned by ATC.
NOTE: DAIFE TRANSITION: For aircraft landing ORD only, or as assigned by ATC.

TAKEOFF MINIMUMS:

Rwys 7, 25: Standard with a minimum climb of 500' per NM to 1300.



NOTE: Chart not to scale.

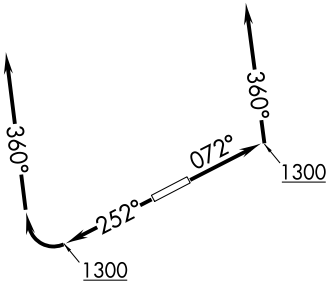
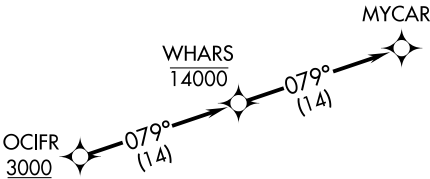
(GTLKE4.GTIKE) 24025
GTIKE FOUR DEPARTURE (RNAV)
AL-5703 (FAA)

LORAIN COUNTY RGNL (LPR)
LORAIN/EVRIA, OHIO

ASOS
118.925
CLNC DEL
125.7
CTAF
122.7
CLEVELAND DEP CON
125.35 346.325

TOP ALTITUDE:
ASSIGNED BY ATC

NOTE: RNAV 1.
NOTE: RADAR required.
NOTE: DME/DME/IRU or GPS required.



TAKEOFF MINIMUMS:
Rwys 7, 25: Standard
with minimum climb of
500' per NM to 1300.

NOTE: Chart not to scale.



DEPARTURE ROUTE DESCRIPTION

TAKEOFF RUNWAY 7: Climb on heading 072° to 1300, then on heading 360° or as assigned by ATC for RADAR vectors to cross OCIFR at or above 3000, thence....
TAKEOFF RUNWAY 25: Climb on heading 252° to 1300, then right turn on heading 360° or as assigned by ATC for RADAR vectors to cross OCIFR at or above 3000, thence....
....on track 079° to cross WHARS at or below 14000, then on track 079° to MYCAR.
Maintain altitude assigned by ATC, expect filed altitude ten minutes after departure.

ZAAPA FIVE DEPARTURE (RNAV)
(ZAAPA5.ZAAPA) 26MAR20

LORAIN COUNTY RCNL (LPR)
LORAIN/EVRIA, OHIO

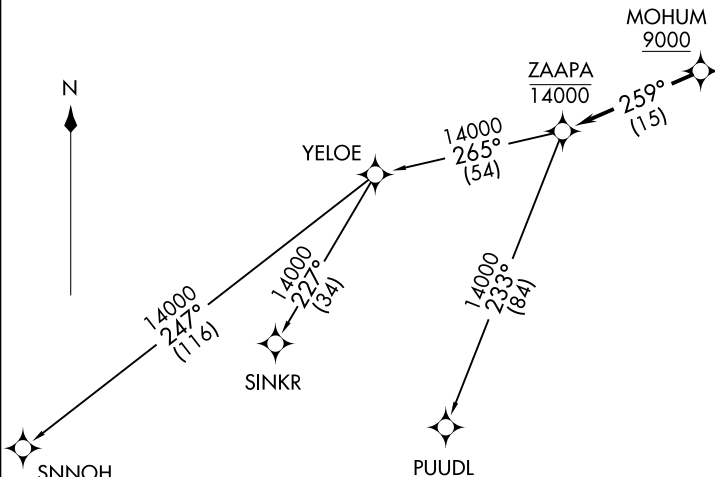
ASOS
118.925
CLINC DEL
125.7
CTAF
122.7
CLEVELAND DEP CON
125.35 346.325

**TOP ALTITUDE:
ASSIGNED BY ATC**

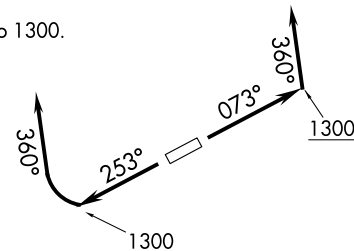
TAKEOFF MINIMUMS:

Rwys 7, 25: Standard with a minimum climb of 500' per NM to 1300.

- NOTE: RADAR required.
NOTE: RNAV 1.
NOTE: DME/DME/IRU or GPS required.
NOTE: PUUDL TRANSITION: For aircraft at or below FL220 only or as assigned by ATC.



NOTE: Chart not to scale.



DEPARTURE ROUTE DESCRIPTION

TAKEOFF RUNWAY 7: Climb on heading 073° to 1300, then on heading 360° or as assigned by ATC for RADAR vectors to cross MOHUM at or above 9000, thence....
TAKEOFF RUNWAY 25: Climb on heading 253° to 1300, then right turn heading 360° or as assigned by ATC for RADAR vectors to cross MOHUM at or above 9000, thence....

....on track 259° to cross ZAAPA at or below 14000, then on (transition). Maintain ATC assigned altitude, expect filed altitude ten minutes after departure.

PUUDL TRANSITION (ZAAPA5.PUUDL)
SINKR TRANSITION (ZAAPA5.SINKR)
SNNOH TRANSITION (ZAAPA5.SNNOH)

(ZAAPA5.ZAAPA) 24025
ZAAPA FIVE DEPARTURE (RNAV)
AL-5703 (FAA)

LORAIN COUNTY RCNL (LPR)
LORAIN/EVRIA, OHIO