

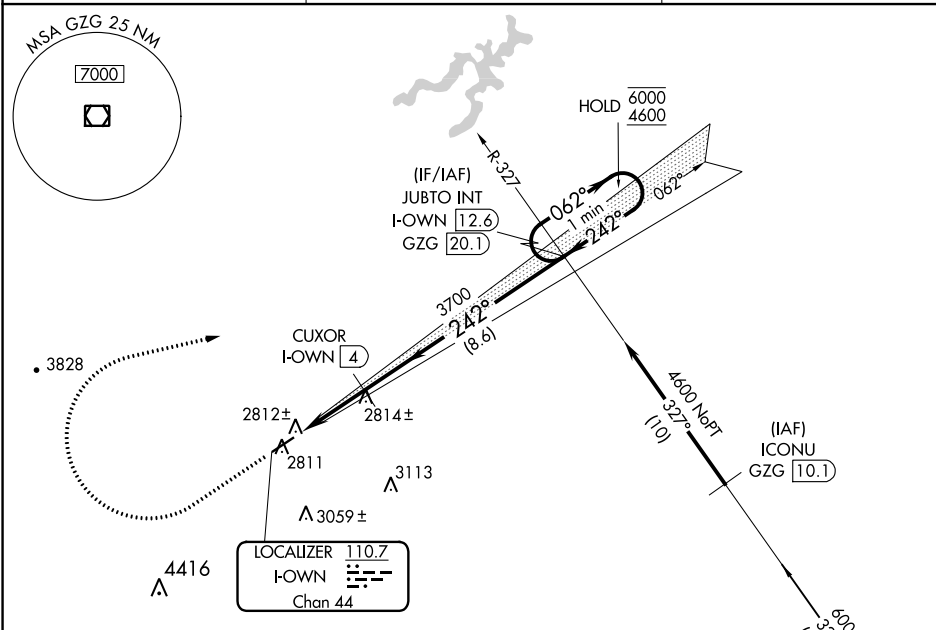
LOC I-OWN <b>110.7</b> Chan 44	APP CRS <b>242°</b>	Rwy Idg TDZE Apt Elev	<b>5280</b> <b>2684</b> <b>2684</b>
--------------------------------------	------------------------	-----------------------------	---

# LOC RWY 24

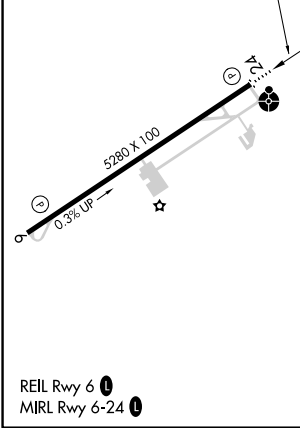
LONESOME PINE (LNP)

DME required. RNAV 1-GPS required.	ODALS ⚠	MISSED APPROACH: Climb to 3300 then climbing right turn to 4600 direct JUBTO and hold.
▼ Circling to Rwy 6 NA at night. Rwy 24 helicopter visibility reduction below 3/4 SM NA.	⚠ NA	

AWOS-3 <b>118.6</b>	INDIANAPOLIS CENTER <b>126.575 257.85</b>	UNICOM <b>123.0</b> (CTAF) <b>1</b>
------------------------	--	--



ELEV 2684	TDZE 2684
-----------	-----------



CATEGORY	A	B	C	D
S-LOC 24	3160-1	476 (500-1)	3160-1 1/4	476 (500-1 1/4)
<input checked="" type="checkbox"/> CIRCLING	3240-1 556 (600-1)	3360-1 676 (700-1)	3360-2 676 (700-2)	3560-2 3/4 876 (900-2 3/4)

NE-3, 22 FEB 2024 to 21 MAR 2024

NE-3, 22 FEB 2024 to 21 MAR 2024

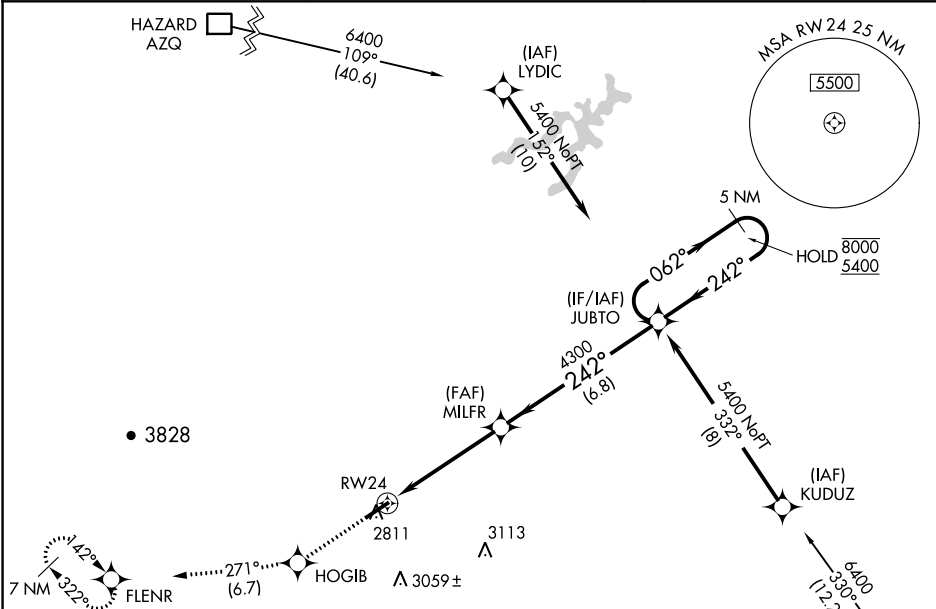
WAAS CH <b>77602</b> <b>W24A</b>	APP CRS <b>242°</b>	Rwy ldg TDZE Apt Elev	<b>5280</b> <b>2684</b> <b>2684</b>
--	------------------------	-----------------------------	---

# RNAV (GPS) RWY 24

LONESOME PINE (LNP)

RNP APCH.	ODALS	MISSED APPROACH: Climb to 6400 direct HOGIB and on track 271° to FLENR and hold, continue climb-in-hold to 6400.
<p>⚠ Circling to Rwy 6 NA at night. Rwy 24 helicopter visibility reduction below 3/4 SM NA.                  For uncompensated Baro-VNAV systems, LNAV/VNAV NA below -20°C or above 54°C.                  Inop table does not apply to LPV all Cats and LNAV Cat A/B. For inop ALS, increase LNAV/VNAV Cat A/B visibility to 1 1/4 SM and LNAV Cat C/D visibility to 1 3/8 SM.</p>		

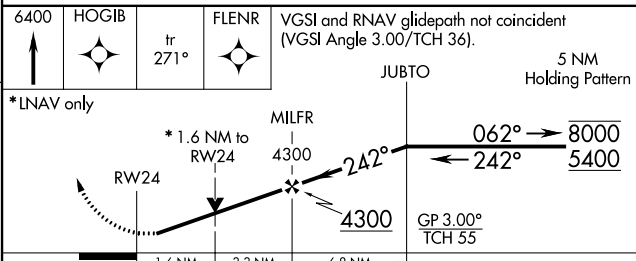
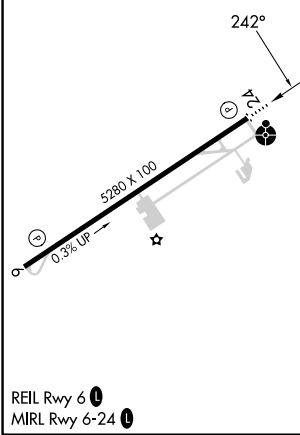
AWOS-3 <b>118.6</b>	INDIANAPOLIS CENTER <b>126.575 257.85</b>	UNICOM <b>123.0 (CTAF) 0</b>
------------------------	--	---------------------------------



ELEV <b>2684</b>	TDZE <b>2684</b>
------------------	------------------

Procedure NA for arrival on GZG VOR/DME airway radials 248 CW 010.

GLADE SPRING GZG



CATEGORY	A	B	C	D
LPV DA		2962-1	278 (300-1)	
LNAV/VNAV DA		3112-1 1/8	428 (500-1 1/8)	
LNAV MDA	3140-1	456 (500-1)	3140-1 1/8	456 (500-1 1/8)
CIRCLING	3240-1 556 (600-1)	3360-1 676 (700-1)	3360-2 676 (700-2)	3560-2 3/4 876 (900-2 3/4)

NE-3, 22 FEB 2024 to 21 MAR 2024

NE-3, 22 FEB 2024 to 21 MAR 2024

APP CRS	Rwy Idg	<b>5280</b>
<b>066°</b>	TDZE	<b>2671</b>
	Apt Elev	<b>2684</b>

# RNAV (GPS) RWY 6

LONESOME PINE (LNP)

RNP APCH.

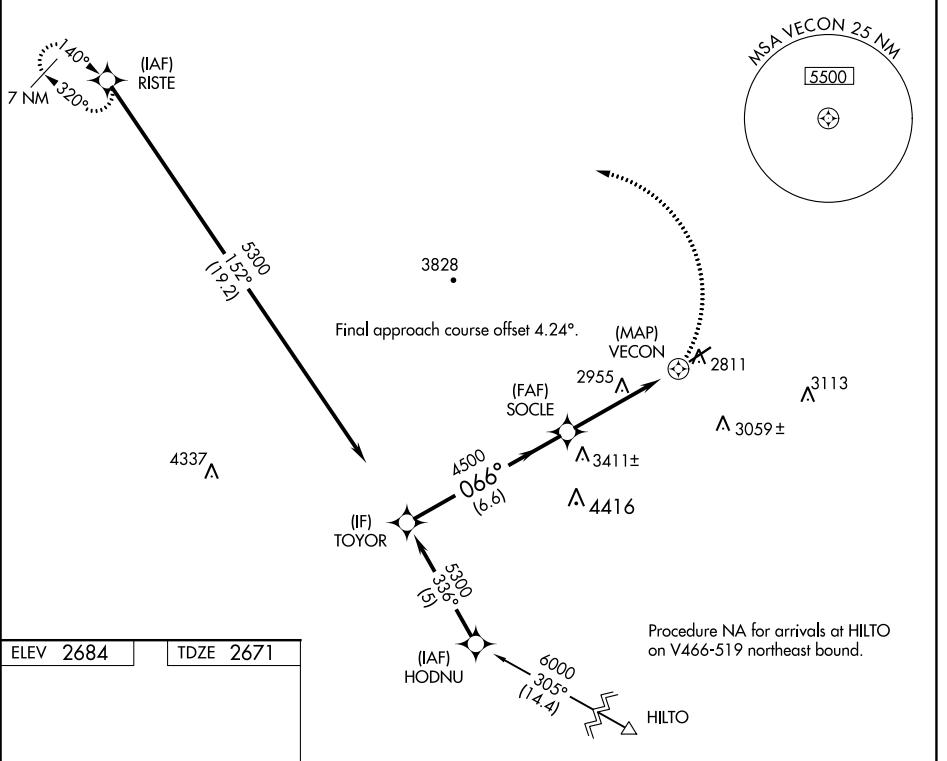
- ▼ Procedure NA at night.
- ▲ Rwy 6 helicopter visibility reduction below 1 SM NA.

MISSED APPROACH: Climbing left turn to 6400 direct RISTE and hold.

AWOS-3  
**118.6**

INDIANAPOLIS CENTER  
**126.575 257.85**

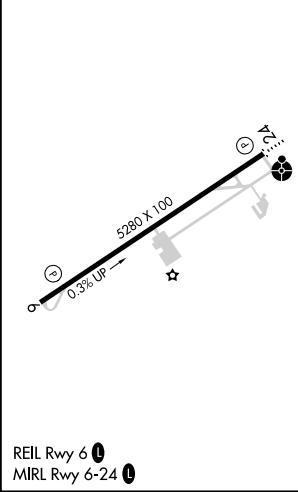
UNICOM  
**123.0** (CTAF) **0**



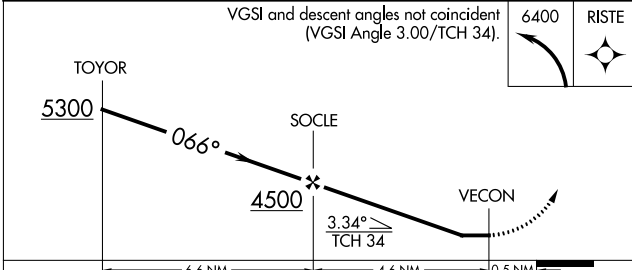
NE-3, 22 FEB 2024 to 21 MAR 2024

NE-3, 22 FEB 2024 to 21 MAR 2024

ELEV 2684	TDZE 2671
-----------	-----------



VGSI and descent angles not coincident (VGSI Angle 3.00/TCH 34).



CATEGORY	A	B	C	D
LNAV MDA	3260-1	589 (600-1)	3260-1¾	589 (600-1¾)
<input checked="" type="checkbox"/> CIRCLING	3260-1 576 (600-1)	3360-1 676 (700-1)	3360-2 676 (700-2)	3560-2¾ 876 (900-2¾)