

APP CRS	Rwy Idg	4870
010°	TDZE	722
	Apt Elev	726

RNAV (GPS) RWY 1

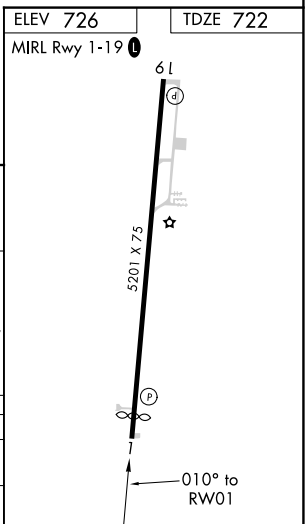
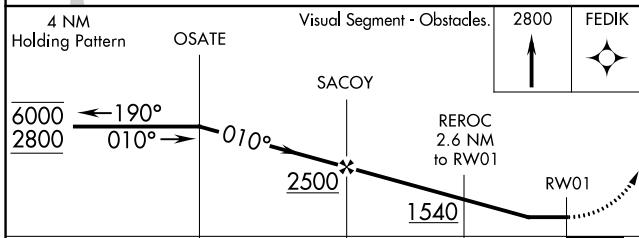
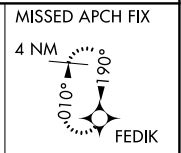
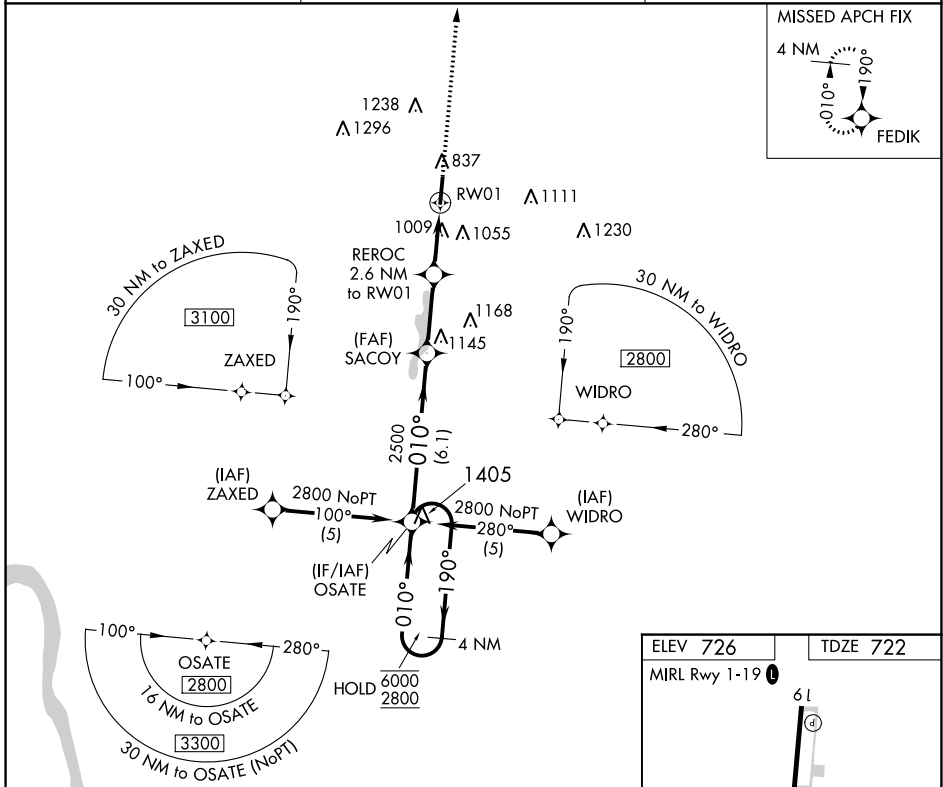
JAMES A RHODES (JRO)

RNP APCH - GPS.

Procedure NA at night. Rwy 1 helicopter visibility reduction below 1 SM NA.

MISSED APPROACH: Climb to 2800 direct FEDIK and hold.

AWOS-3 118.825	HUNTINGTON APP CON 128.4 270.1	UNICOM 122.7 (CTAF) 0
--------------------------	--	---------------------------------



CATEGORY	A	B	C	D
LNVA MDA	1300-1	578 (600-1)	1300-1½	578 (600-1½)
CIRCLING	1340-1 614 (700-1)	1480-1 754 (800-1)	1680-3	954 (1000-3)

EC-2, 22 FEB 2024 to 21 MAR 2024

EC-2, 22 FEB 2024 to 21 MAR 2024

APP CRS **190°**
 Rwy Idg **5201**
 TDZE **726**
 Apt Elev **726**

RNAV (GPS) RWY 19

JAMES A RHODES (JRO)

RNP APCH - GPS.

▼ Procedure NA at night.
▲ Rwy 19 helicopter visibility reduction below 1 SM NA.

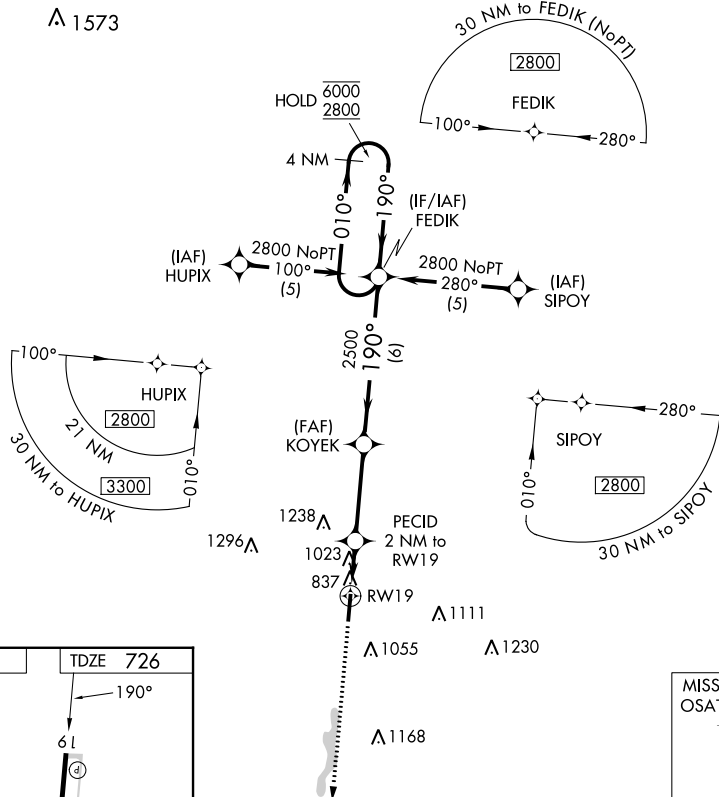
MISSED APPROACH: Climb to 2800 direct OSATE and hold.

AWOS-3 **118.825**

HUNTINGTON APP CON **128.4 270.1**

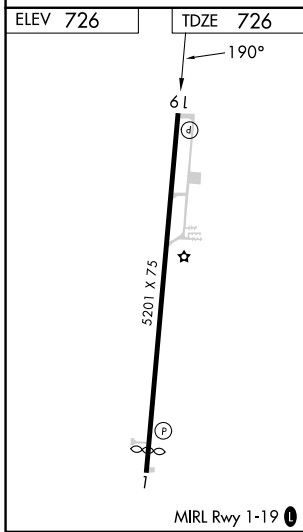
UNICOM **122.7 (CTAF) 0**

▲ 1573



EC-2, 22 FEB 2024 to 21 MAR 2024

EC-2, 22 FEB 2024 to 21 MAR 2024



OSATE KOYEK RWY 19	2800 OSATE VGSi and descent angles not coincident (VGSi Angle 4.00/TCH 45).	FEDIK 4 NM Holding Pattern
	PECID 2 NM to RWY 19 1460	2500
RWY 19 3.32° TCH 40	190° 6000 2800	
CATEGORY A B C D	LNAV MDA 1280-1 554 (600-1) 1280-1½ 554 (600-1½)	CIRCLING 1340-1 614 (700-1) 1480-1 754 (800-1) 1680-3 954 (1000-3)