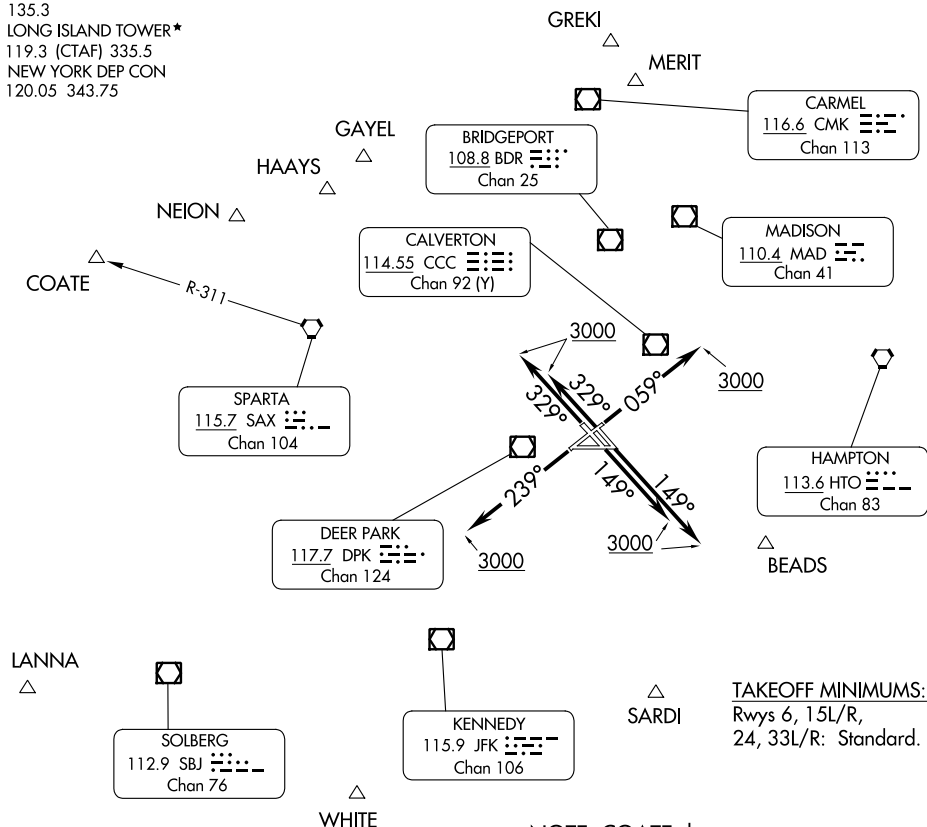


# LONG ISLAND SEVEN DEPARTURE

ATIS 120.725  
 CLNC DEL  
 121.85  
 GND CON  
 135.3  
 LONG ISLAND TOWER\*  
 119.3 (CTAF) 335.5  
 NEW YORK DEP CON  
 120.05 343.75

**TOP ALTITUDE:  
3000**



**TAKEOFF MINIMUMS:**  
 Rwys 6, 15L/R,  
 24, 33L/R: Standard.

NOTE: COATE departures expect vectors to SAX VORTAC or SAX R-311.

NOTE: Chart not to scale.

## DEPARTURE ROUTE DESCRIPTION

- TAKEOFF RUNWAY 6: Climb heading 059° to 3000, thence....
- TAKEOFF RUNWAYS 15L/15R: Climb heading 149° to 3000, thence....
- TAKEOFF RUNWAY 24: Climb heading 239° to 3000, thence....
- TAKEOFF RUNWAYS 33L/33R: Climb heading 329° to 3000, thence....

....on vectors to assigned route/fix. Maintain 3000, expect clearance to filed altitude/flight level 10 minutes after departure.

# LONG ISLAND SEVEN DEPARTURE