

LOC/DME I-FVJ 111.15 Chan 48 (Y)	APP CRS 230°	Rwy Idg 10000 TDZE 790 Apt Elev 796
--	------------------------	--

ILS RWY 23L (SA CAT II)

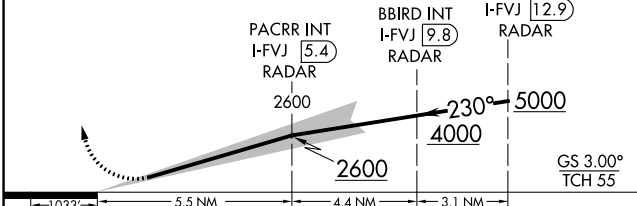
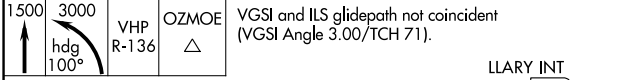
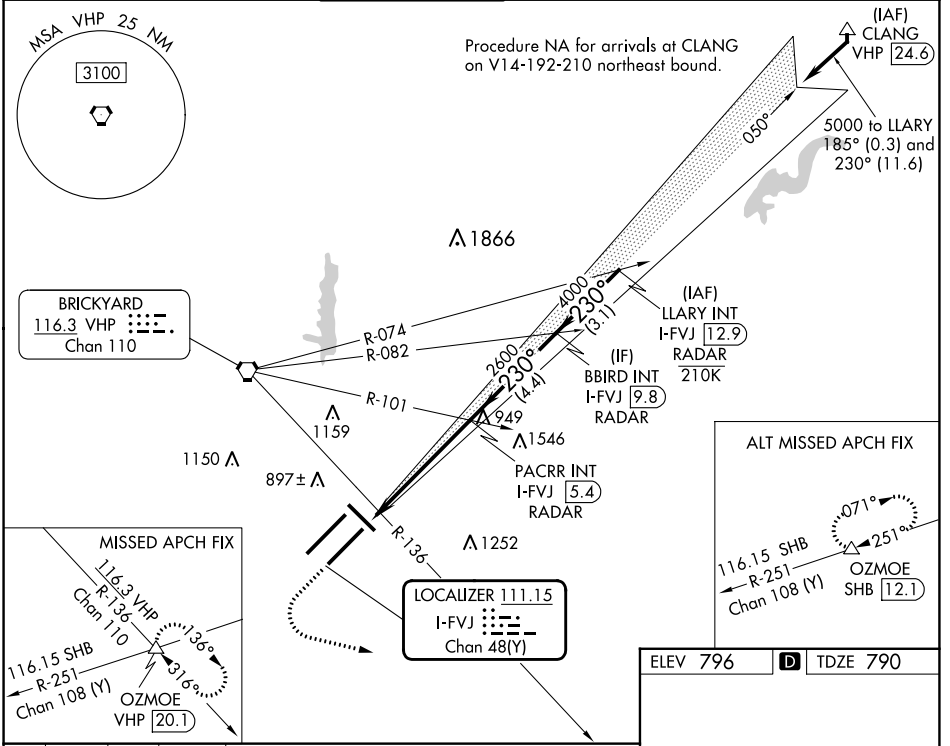
INDIANAPOLIS INTL (IND)

Simultaneous approach authorized. Requires specific OPSPEC, MSPEC, or LOA approval.

MALS

MISSED APPROACH: Climb to 1500 then climbing left turn to 3000 on heading 100° and on VHP VORTAC R-136 to OZMOE INT/VHP 20.1 DME and hold.

D-ATIS 134.25	INDIANAPOLIS APP CON 128.175 317.8	INDY TOWER 120.9 257.8	GND CON 121.9	CLNC DEL 128.75 257.8	CPDLC
-------------------------	--	----------------------------------	-------------------------	---------------------------------	-------



CATEGORY	A	B	C	D
S-ILS 23L	RA 105/12		100 DA 890	

ELEV 796 **D** TDZE 790

HIRL all Rwys
TDZ/CL Rwys 5L and 5R

SA CATEGORY II ILS- SPECIAL AIRCREW & AIRCRAFT CERTIFICATION REQUIRED

EC-2, 22 FEB 2024 to 21 MAR 2024

EC-2, 22 FEB 2024 to 21 MAR 2024

LOC/DME I-ZUK 111.75 Chan 54 (Y)	APP CRS 230°	Rwy Idg 11200 TDZE 783 Apt Elev 796
---	------------------------	--

ILS RWY 23R (SA CAT I & II)

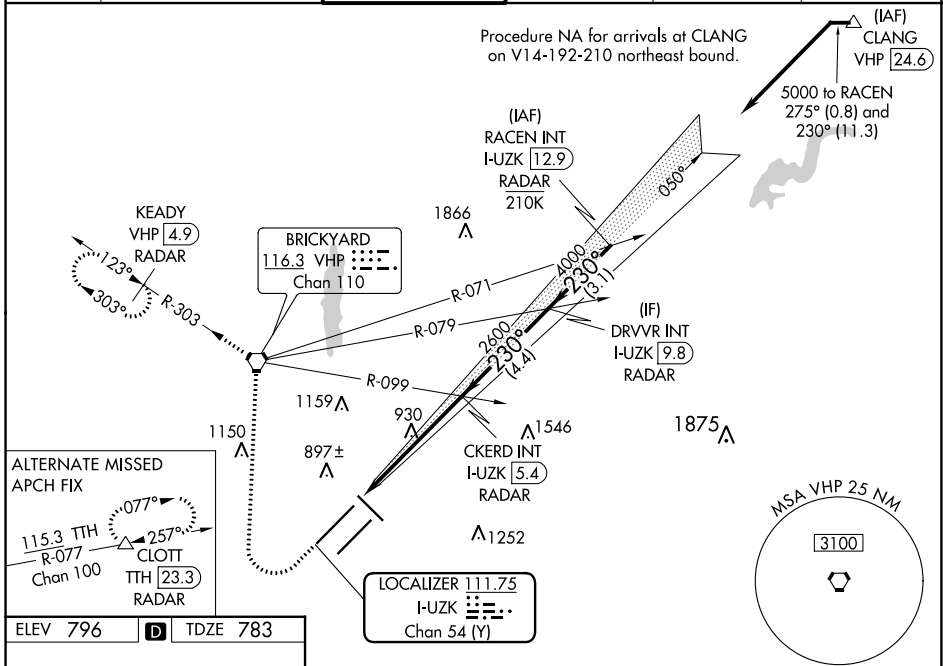
INDIANAPOLIS INTL (IND)

⚠ Simultaneous approach authorized. DME or RADAR required. Requires specific OPSPEC, MSPEC, or LOA approval and use of HUD to DH. Reduced lighting: requires specific OPSPEC, MSPEC, or LOA approval and use of autoland or HUD to touchdown.



MISSED APPROACH: Climb to 1500 then climbing right turn to 3000 direct VHP VORTAC and on VHP R-303 to KEADY/VHP 4.9 DME/RADAR and hold.

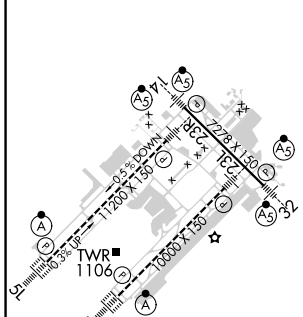
D-ATIS 134.25	INDIANAPOLIS APP CON 128.175 317.8	INDY TOWER 120.9 257.8	GND CON 121.9	CLNC DEL 128.75 257.8	CPDLC
-------------------------	--	----------------------------------	-------------------------	---------------------------------	-------



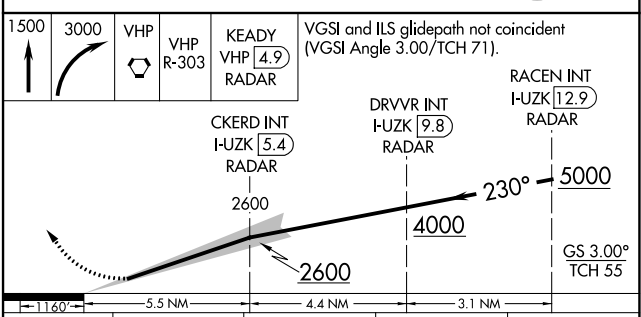
EC-2, 22 FEB 2024 to 21 MAR 2024

EC-2, 22 FEB 2024 to 21 MAR 2024

ELEV 796	D	TDZE 783
----------	----------	----------



HIRL all Rwys
TDZ/CL Rwys 5L and 5R



CATEGORY	A	B	C	D
S-ILS 23R	SA CAT I RA 140/14 150 DA 933			
S-ILS 23R	SA CAT II RA 96/12 100 DA 883			

SA CATEGORY I & II ILS - SPECIAL AIRCREW & AIRCRAFT CERTIFICATION REQUIRED

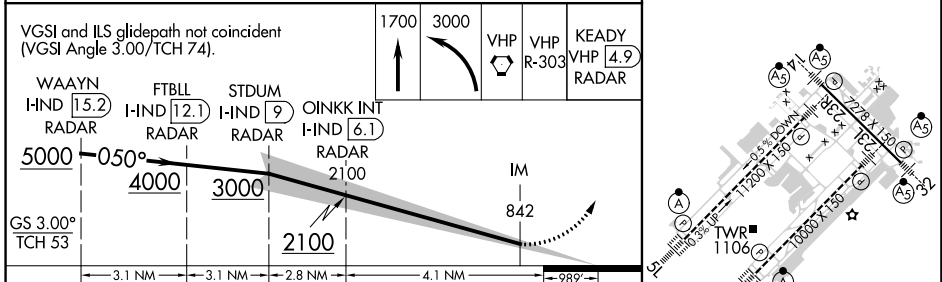
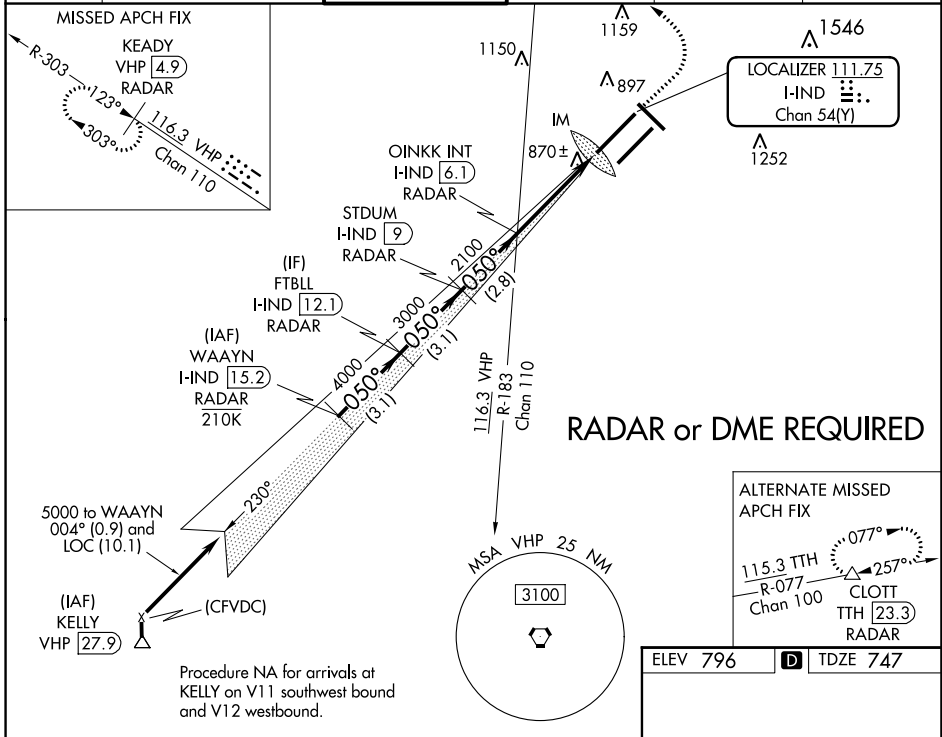
LOC/DME I-IND 111.75 Chan 54 (Y)	APP CRS 050°	Rwy Idg 11200 TDZE 747 Apt Elev 796
--	------------------------	--

ILS RWY 5L (CAT II & III)

INDIANAPOLIS INTL (IND)

<p>Simultaneous approach authorized. CAT III: Localizer not suitable for electronic rollout guidance. DME or RADAR required.</p>	<p>ALSF-2</p>	<p>MISSED APPROACH: Climb to 1700 then climbing left turn to 3000 direct VHP VORTAC then on VHP VORTAC R-303 to KEADY/VHP 4.9 DME/RADAR and hold.</p>
--	---------------	---

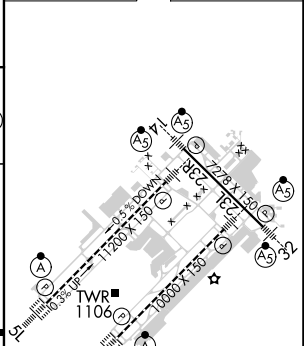
D-ATIS 134.25	INDIANAPOLIS APP CON 128.175 317.8	INDY TOWER 120.9 257.8	GND CON 121.9	CLNC DEL 128.75 257.8	CPDLC
-------------------------	--	----------------------------------	-------------------------	---------------------------------	-------



CATEGORY	A	B	C	D
S-ILS 5L	CAT II RA 113/12 100 DA 847			
S-ILS 5L	CAT III RVR 07			

CATEGORY II & III ILS - SPECIAL AIRCREW & AIRCRAFT CERTIFICATION REQUIRED

ELEV 796	D	TDZE 747
----------	----------	----------



HIRL all Rwws
TDZ/CL Rwws 5L and 5R

EC-2, 22 FEB 2024 to 21 MAR 2024

EC-2, 22 FEB 2024 to 21 MAR 2024

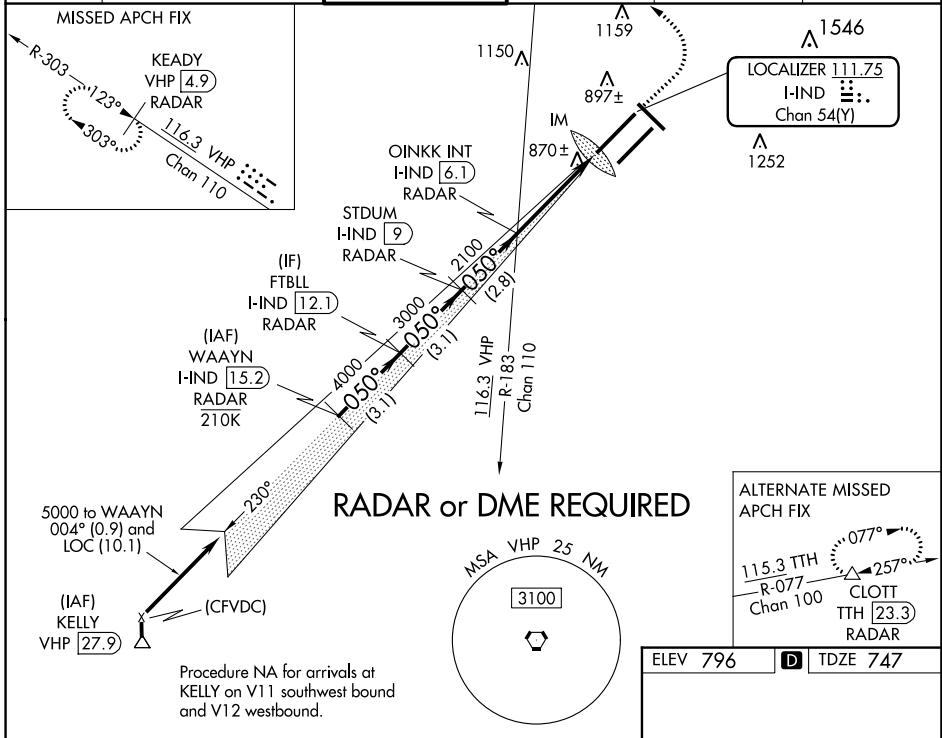
LOC/DME I-IND 111.75 Chan 54 (Y)	APP CRS 050°	Rwy Idg 11200 TDZE 747 Apt Elev 796
--	------------------------	--

ILS RWY 5L (SA CAT I)

INDIANAPOLIS INTL (IND)

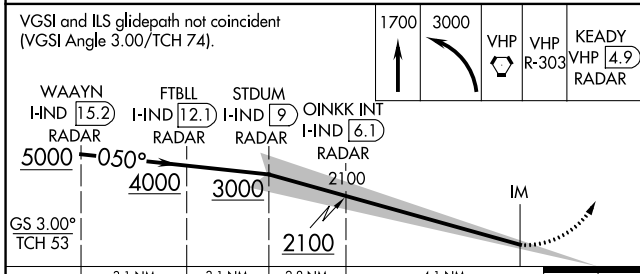
Simultaneous approach authorized. Requires specific OPSPEC, MSPEC, or LOA approval and use of HUD to DH. DME or RADAR required.	ALSF-2 	MISSED APPROACH: Climb to 1700 then climbing left turn to 3000 direct VHP VORTAC then on VHP VORTAC R-303 to KEADY/VHP 4.9 DME/RADAR and hold.

D-ATIS 134.25	INDIANAPOLIS APP CON 128.175 317.8	INDY TOWER 120.9 257.8	GND CON 121.9	CLNC DEL 128.75 257.8	CPDLC
-------------------------	--	----------------------------------	-------------------------	---------------------------------	-------

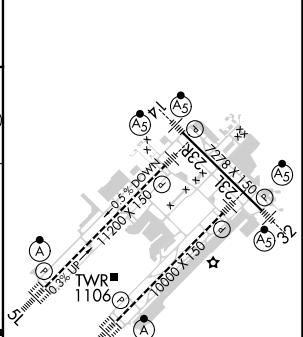


EC-2, 22 FEB 2024 to 21 MAR 2024

EC-2, 22 FEB 2024 to 21 MAR 2024



ELEV 796	D TDZE 747
----------	-------------------



CATEGORY	A	B	C	D
S-ILS 5L	RA 178/14		150 DA 897	

SA CATEGORY I ILS - SPECIAL AIRCREW & AIRCRAFT CERTIFICATION REQUIRED

HIRL all Rwws
TDZ/CL Rwws 5L and 5R

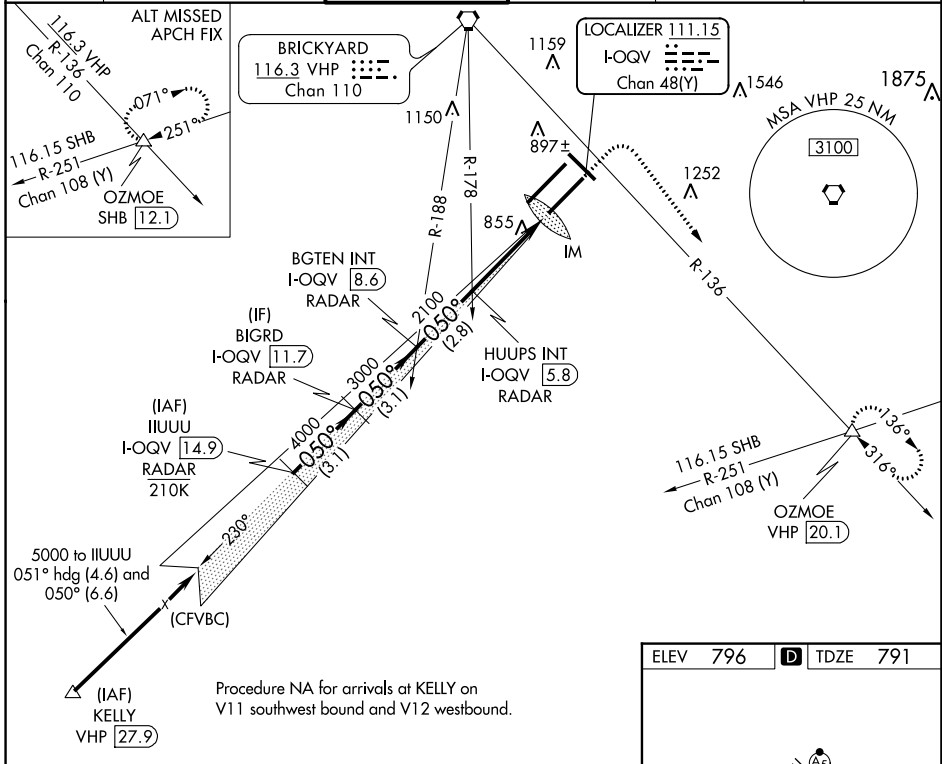
LOC/DME I-QOQV 111.15 Chan 48(Y)	APP CRS 050°	Rwy Ldg TDZE Apt Elev	10000 791 796
---	------------------------	-----------------------------	--

ILS RWY 5R (CAT II & III)

INDIANAPOLIS INTL (IND)

<p>▽ DME or RADAR required. △ Simultaneous approach authorized.</p>	<p>ALSF-2 A</p>	<p>MISSED APPROACH: Climb to 1500 then climbing right turn to 3000 on heading 148° and on VHP VORTAC R-136 to OZMOE INT/VHP 20.1 DME and hold.</p>
---	----------------------------	--

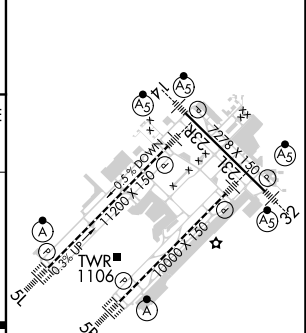
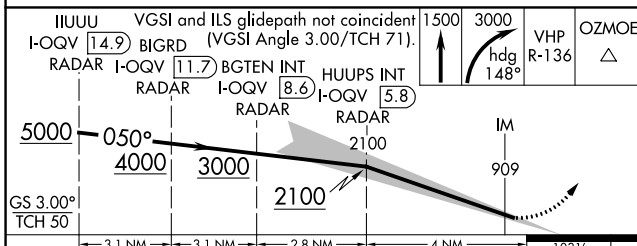
D-ATIS 134.25	INDIANAPOLIS APP CON 128.175 317.8	INDY TOWER 120.9 257.8	GND CON 121.9	CLNC DEL 128.75 257.8	CPDLC
-------------------------	--	----------------------------------	-------------------------	---------------------------------	-------



EC-2, 22 FEB 2024 to 21 MAR 2024

EC-2, 22 FEB 2024 to 21 MAR 2024

ELEV 796	D TDZE 791
----------	-------------------



CATEGORY	A	B	C	D
S-ILS 5R	CAT II RA 109/12 100 DA 891			
S-ILS 5R	CAT III RVR 06			

CATEGORY II & III ILS - SPECIAL AIRCREW & AIRCRAFT CERTIFICATION REQUIRED

HIRL all Rwys
TDZ/CL Rwys 5L and 5R

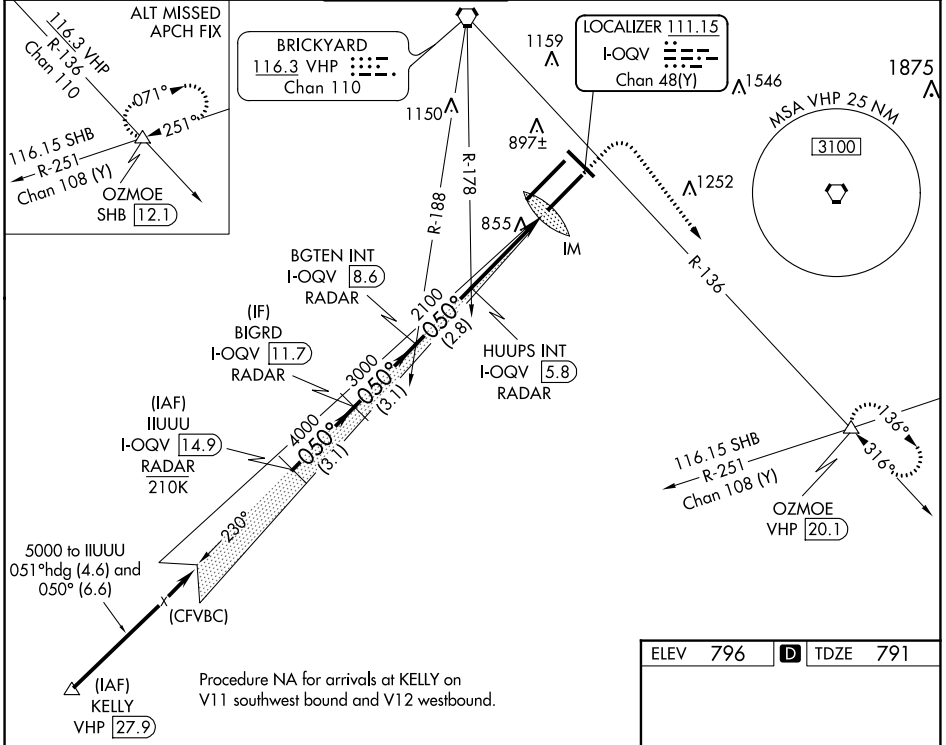
LOC/DME I-QOV 111.15 Chan 48(Y)	APP CRS 050°	Rwy ldg 10000 TDZE 791 Apt Elev 796
--	------------------------	--

ILS RWY 5R (SA CAT I)

INDIANAPOLIS INTL (IND)

▼ DME or RADAR required. Simultaneous approach authorized. Requires specific OPSPEC, MSPEC, or LOA approval and use of HUD to DH.	ALS-F-2 	MISSED APPROACH: Climb to 1500 then climbing right turn to 3000 on heading 148° and on VHP VORTAC R-136 to OZMOE INT/VHP 20.1 DME and hold.
--	-------------	---

D-ATIS 134.25	INDIANAPOLIS APP CON 128.175 317.8	INDY TOWER 120.9 257.8	GND CON 121.9	CLNC DEL 128.75 257.8	CPDLC
-------------------------	--	----------------------------------	-------------------------	---------------------------------	-------

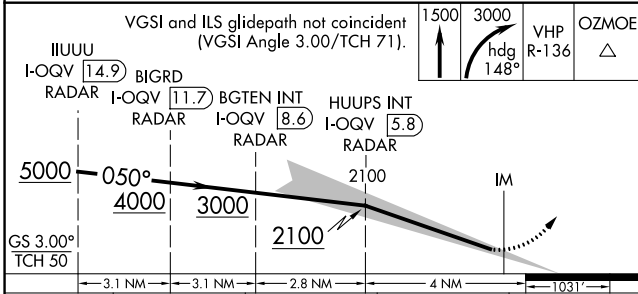


EC-2, 22 FEB 2024 to 21 MAR 2024

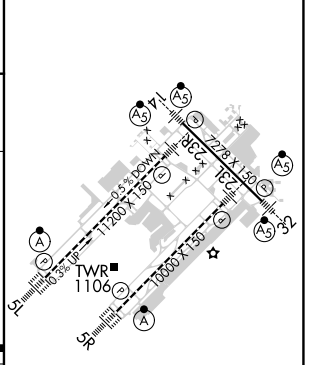
EC-2, 22 FEB 2024 to 21 MAR 2024

Procedure NA for arrivals at KELLY on V11 southwest bound and V12 westbound.

VGSI and ILS glidepath not coincident (VGSI Angle 3.00/TCH 71).



ELEV 796	D TDZE 791
----------	-------------------



CATEGORY	A	B	C	D
S-ILS 5R	RA 163/14 150 DA 941			

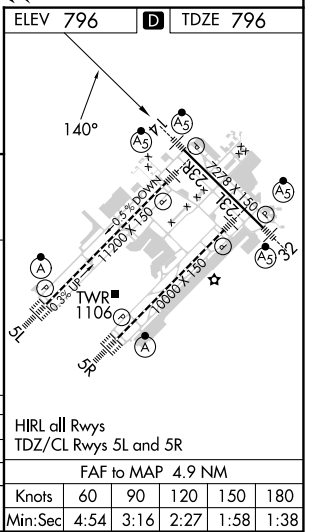
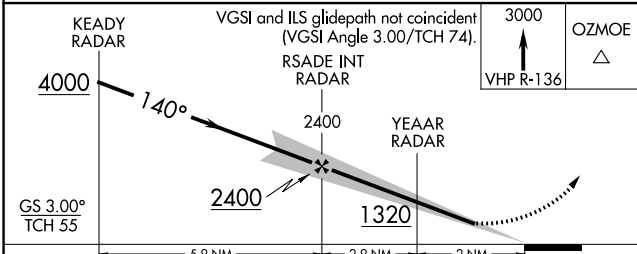
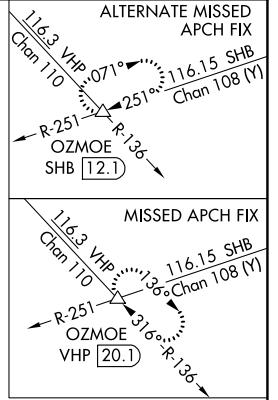
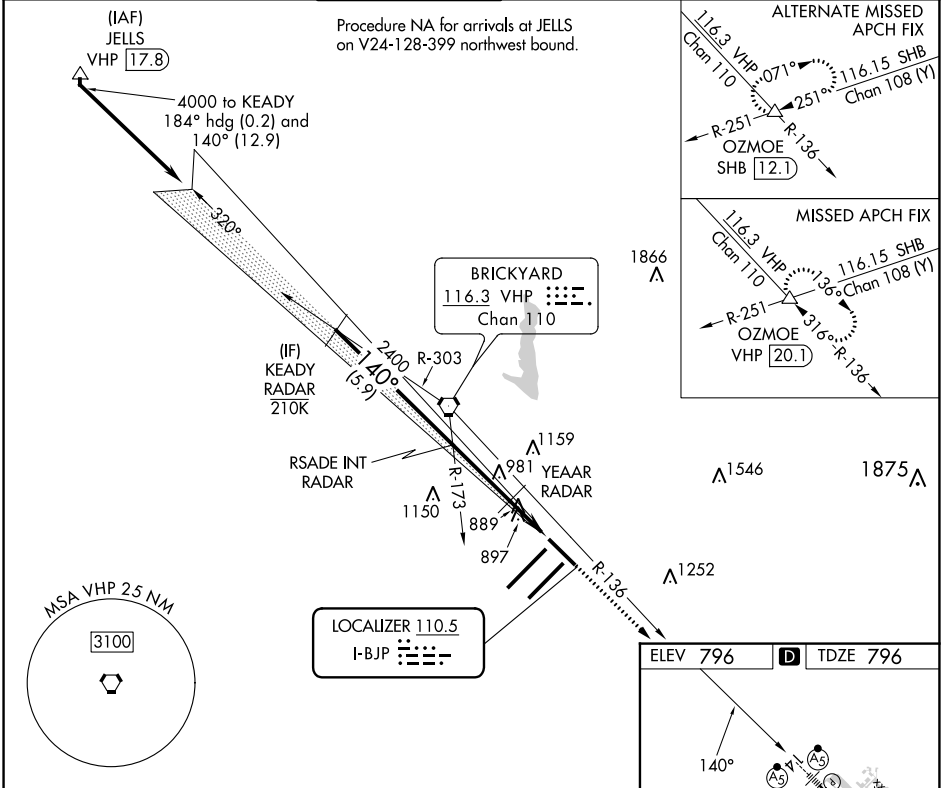
SA CATEGORY I ILS SPECIAL AIRCREW & AIRCRAFT CERTIFICATION REQUIRED

HIRL all Rwys
TDZ/CL Rwys 5L and 5R

LOC I-BJP 110.5	APP CRS 140°	Rwy Idg 7278 TDZE 796 Apt Elev 796
---------------------------	------------------------	---

ILS or LOC RWY 14
INDIANAPOLIS INTL (IND)

RADAR required.		MALSR		MISSED APPROACH: Climb to 3000 on VHP R-136 to OZMOE INT/VHP 20.1 DME and hold.			
For inop ALS, increase S-LOC 14 Cat C and D visibility to RVR 5500. *RVR 1800 authorized with use of FD or AP or HUD to DA.		D-ATIS 134.25	INDIANAPOLIS APP CON 128.175 317.8	INDY TOWER 120.9 257.8	GND CON 121.9	CLNC DEL 128.75 257.8	CPDLC



CATEGORY	A	B	C	D	
S-ILS 14 *	996/24 200 (200-½)				
S-LOC 14	1140/24	344 (400-½)	1140/30	344 (400-¾)	
C CIRCLING	1420-1	624 (700-1)	1420-1¾	624 (700-1¾)	
			1560-2½	764 (800-2½)	
HIRL all Rwys	TDZ/CL Rwy 5L and 5R				
	FAF to MAP 4.9 NM				
Knots	60	90	120	150	180
Min:Sec	4:54	3:16	2:27	1:58	

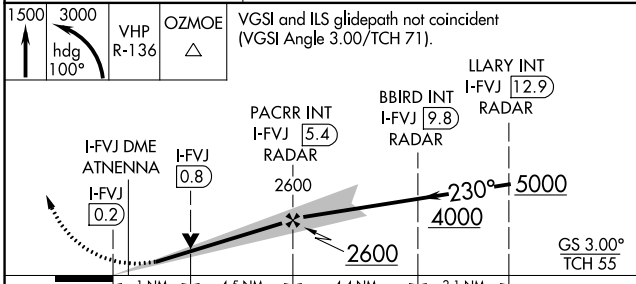
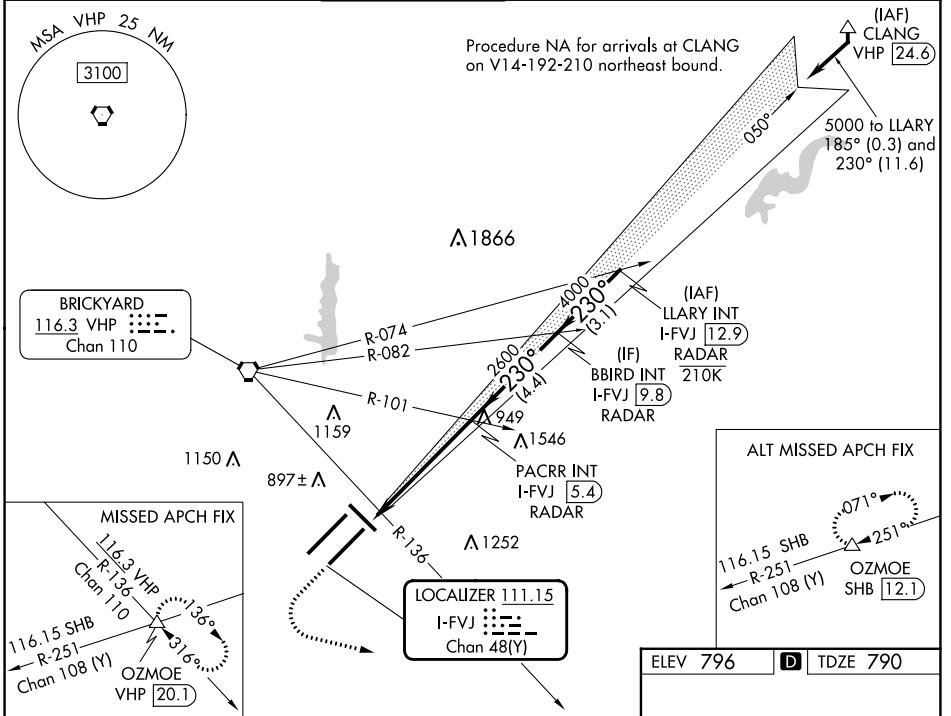
LOC/DME I-FVJ 111.15 Chan 48 (Y)	APP CRS 230°	Rwy Idg TDZE Apt Elev	10000 790 796
---	------------------------	-----------------------------	--

ILS or LOC RWY 23L

INDIANAPOLIS INTL (IND)

⚠ Simultaneous approach authorized. ⚠ * RVR 1800 authorized with use of FD or AP or HUD to DA.	MALS 	MISSED APPROACH: Climb to 1500 then climbing left turn to 3000 on heading 100° and on VHP VORTAC R-136 to OZMOE INT/VHP 20.1 DME and hold.
---	-----------------	---

D-ATIS 134.25	INDIANAPOLIS APP CON 128.175 317.8	INDY TOWER 120.9 257.8	GND CON 121.9	CLNC DEL 128.75 257.8	CPDLC
-------------------------	--	----------------------------------	-------------------------	---------------------------------	-------



ELEV 796	D TDZE 790
----------	-------------------

HIRL all Rwy's
TDZ/CL Rwy's 5L and 5R
FAF to MAP 5.5 NM

Knots	60	90	120	150	180
Min:Sec	5:30	3:40	2:45	2:12	1:50

CATEGORY	A	B	C	D
S-ILS 23L *	990/24		200 (200-½)	
S-LOC 23L	1180/24	390 (400-½)	1180/35	390 (400-¾)
C CIRCLING	1420-1 624 (700-1)		1420-1¾ 624 (700-1¾)	1560-2½ 764 (800-2½)

LOC/DME I-UZK 111.75 Chan 54 (Y)	APP CRS 230°	Rwy Idg 11200 TDZE 783 Apt Elev 796
---	------------------------	--

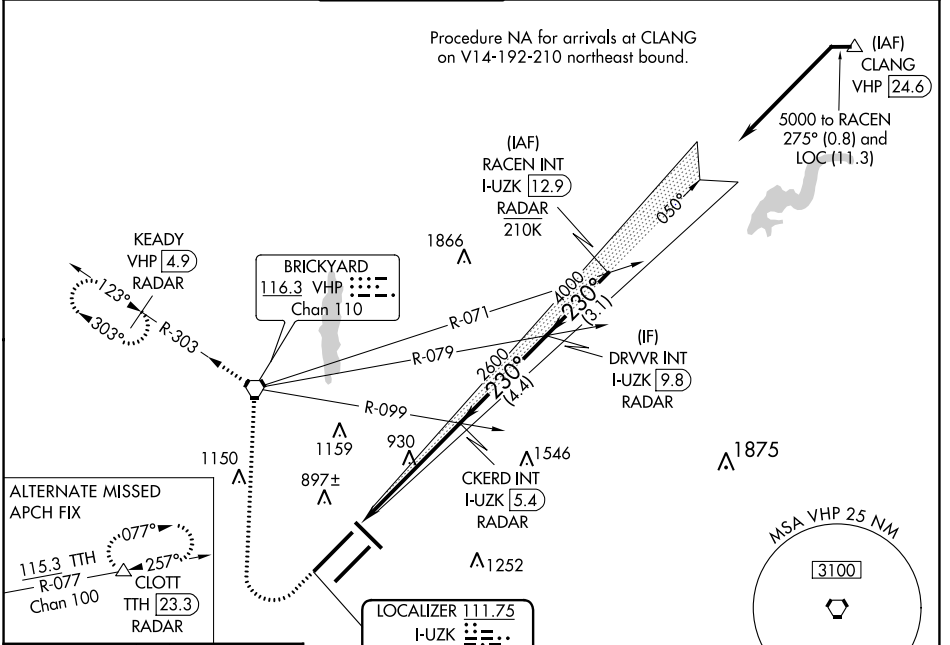
ILS or LOC RWY 23R

INDIANAPOLIS INTL (IND)

⚠ Simultaneous approach authorized.
⚠ DME or RADAR required.
 **RVR 1800 authorized with use of FD or AP or HUD to DA.

MALS MISSED APPROACH: Climb to 1500 then climbing right turn to 3000 direct VHP VORTAC and on VHP R-303 to KEADY/VHP 4.9 DME/RADAR and hold.

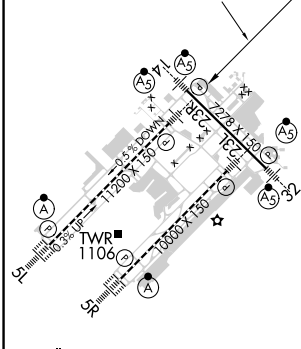
D-ATIS 134.25	INDIANAPOLIS APP CON 128.175 317.8	INDY TOWER 120.9 257.8	GND CON 121.9	CLNC DEL 128.75 257.8	CPDLC
-------------------------	--	----------------------------------	-------------------------	---------------------------------	-------



EC-2, 22 FEB 2024 to 21 MAR 2024

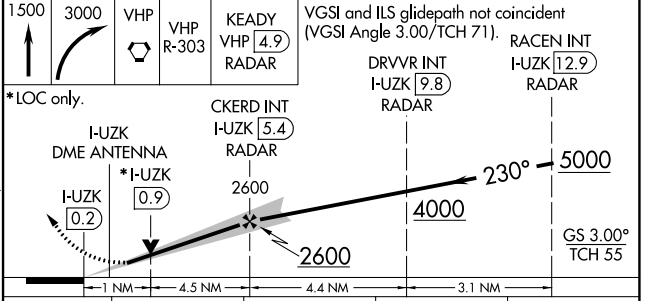
EC-2, 22 FEB 2024 to 21 MAR 2024

ELEV 796	D	TDZE 783
----------	----------	----------



HIRL all Rwy's
 TDZ/CL Rwy's 5L and 5R
 FAF to MAP 5.5 NM

Knots	60	90	120	150	180
Min:Sec	5:30	3:40	2:45	2:12	1:50



CATEGORY	A	B	C	D
S-ILS 23R**	983/24 200 (200-½)			
S-LOC 23R	1180/24	397 (400-½)	1180/35	397 (400-¾)
C CIRCLING	1420-1	624 (700-1)	1420-1¾ 624 (700-1¾)	1560-2½ 764 (800-2½)

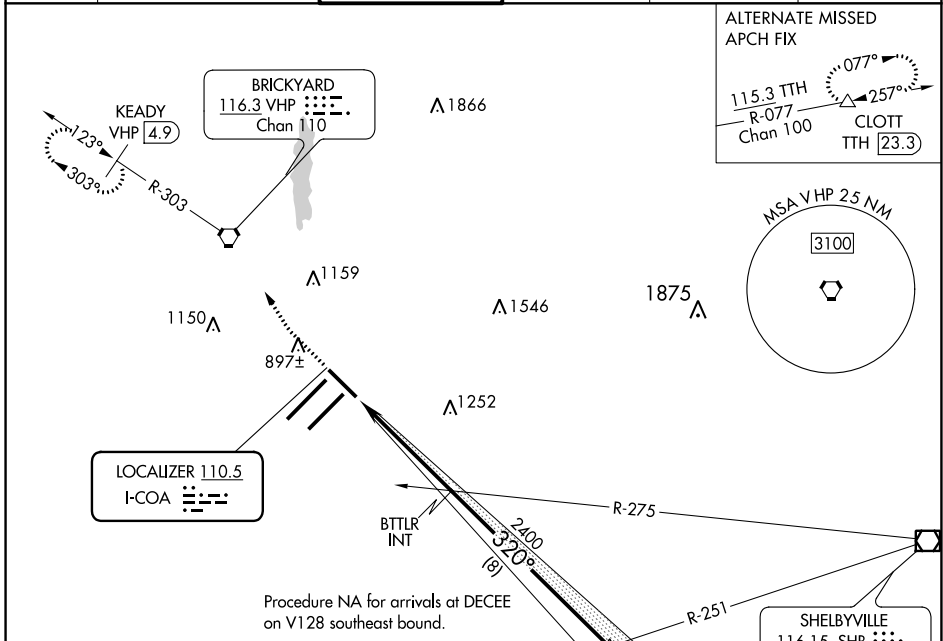
LOC I-COA 110.5	APP CRS 320°	Rwy Idg 7278 TDZE 793 Apt Elev 796
---------------------------	------------------------	--

ILS or LOC RWY 32

INDIANAPOLIS INTL (IND)

<p>▼ DME required.</p> <p>▲ #RVR 1800 authorized with the use of FD or AP or HUD to DA.</p>	<p>MALSR</p>	<p>MISSED APPROACH: Climb to 1500 then climbing right turn to 3000 direct VHP VORTAC and on VHP R-303 to KEADY/VHP 4.9 DME and hold.</p>
---	--------------	--

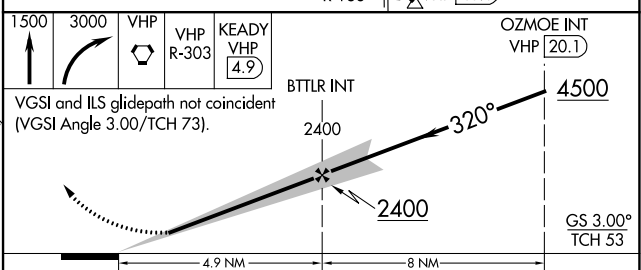
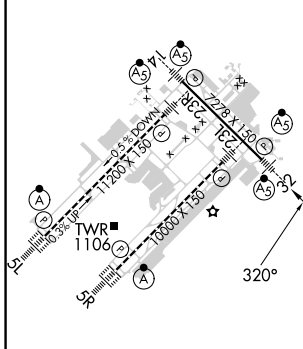
D-ATIS 134.25	INDIANAPOLIS APP CON 128.175 317.8	INDY TOWER 120.9 257.8	GND CON 121.9	CLNC DEL 128.75 257.8	CPDLC
-------------------------	--	----------------------------------	-------------------------	---------------------------------	-------



EC-2, 22 FEB 2024 to 21 MAR 2024

EC-2, 22 FEB 2024 to 21 MAR 2024

ELEV 796	D	TDZE 793
----------	----------	----------



CATEGORY	A	B	C	D
S-ILS 32	# 993/24 200 (200-½)			
S-LOC 32	1280/24	487 (500-½)	1280/50	487 (500-1)
C CIRCLING	1420-1	624 (700-1)	1420-1¾ 624 (700-1¾)	1560-2½ 764 (800-2½)

HIRL all Rwys
TDZ/CL Rwys 5L and 5R

FAF to MAP 4.9 NM

Knots	60	90	120	150	180
Min:Sec	4:54	3:16	2:27	1:58	1:38

LOC/DME I-IND 111.75 Chan 54 (Y)	APP CRS 050°	Rwy Idg 11200 TDZE 747 Apt Elev 796
--	------------------------	--

ILS or LOC RWY 5L

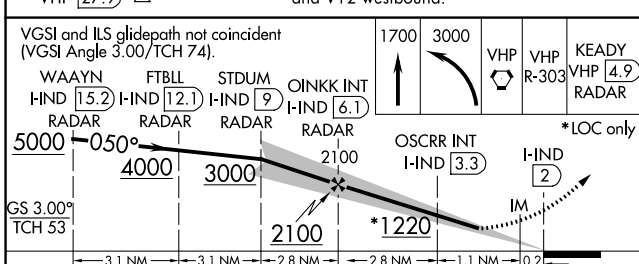
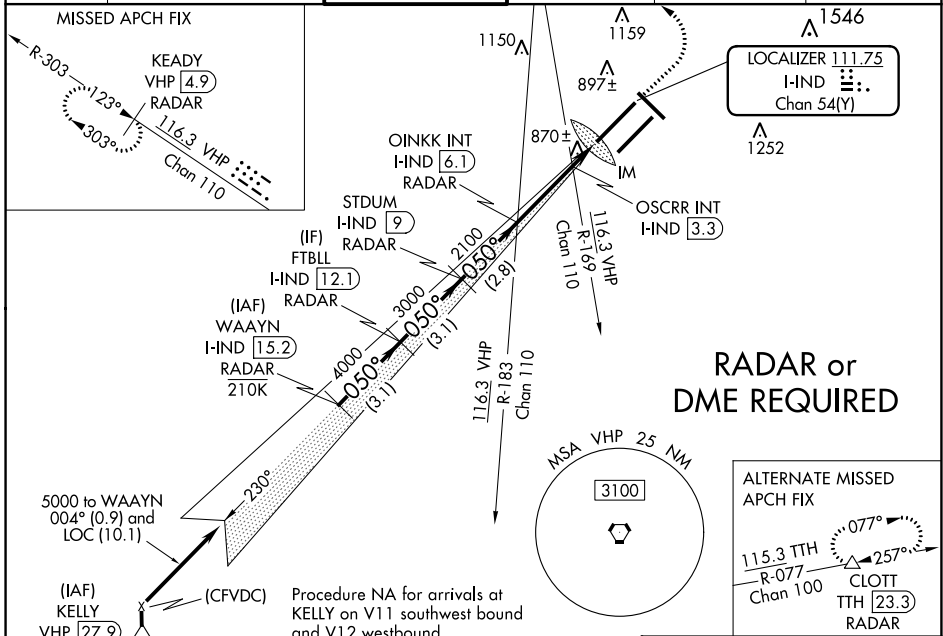
INDIANAPOLIS INTL (IND)

⚠ Simultaneous approach authorized. DME or RADAR required. For inop ALS, increase S-LOC 5L Cat C/D visibility to 1 1/2 SM. OSCRR fix minimums: For inop ALS, increase S-LOC 5L Cat C/D visibility to RVR 5500.

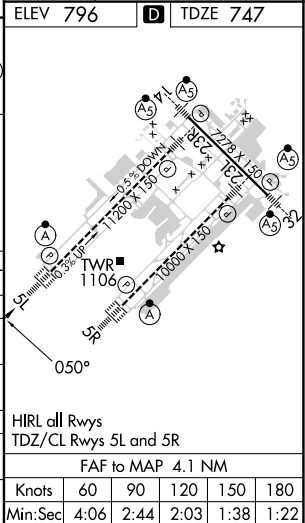
ALSIF-2
A

MISSED APPROACH: Climb to 1700 then climbing left turn to 3000 direct VHP VORTAC then on VHP VORTAC R-303 to KEADY/VHP 4.9 DME/RADAR and hold.

D-ATIS 134.25	INDIANAPOLIS APP CON 128.175 317.8	INDY TOWER 120.9 257.8	GND CON 121.9	CLNC DEL 128.75 257.8	CPDLC
-------------------------	--	----------------------------------	-------------------------	---------------------------------	-------



CATEGORY	A	B	C	D
S-ILS 5L	947/18		200 (200-1/2)	
S-LOC 5L	1220/24	473 (500-1/2)	1220/50	473 (500-1)
C CIRCLING	1420-1	624 (700-1)	1420-1 3/4 624 (700-1 3/4)	1560-2 1/2 764 (800-2 1/2)
OSCRR FIX MINIMUMS (DUAL VOR RECEIVERS or DME REQUIRED)				
S-LOC 5L	1120/24	373 (400-1/2)	1120/35	373 (400-5/8)
C CIRCLING	1420-1	624 (700-1)	1420-1 3/4 624 (700-1 3/4)	1560-2 1/2 764 (800-2 1/2)



EC-2, 22 FEB 2024 to 21 MAR 2024

EC-2, 22 FEB 2024 to 21 MAR 2024

APP CRS	Rwy Idg	10000
230°	TDZE	790
	Apt Elev	796


RNAV (RNP) Z RWY 23L

INDIANAPOLIS INTL (IND)

RNP AR APCH - GPS.

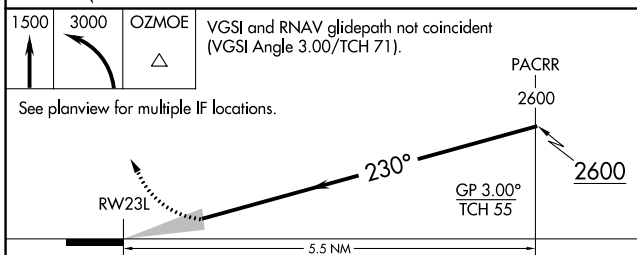
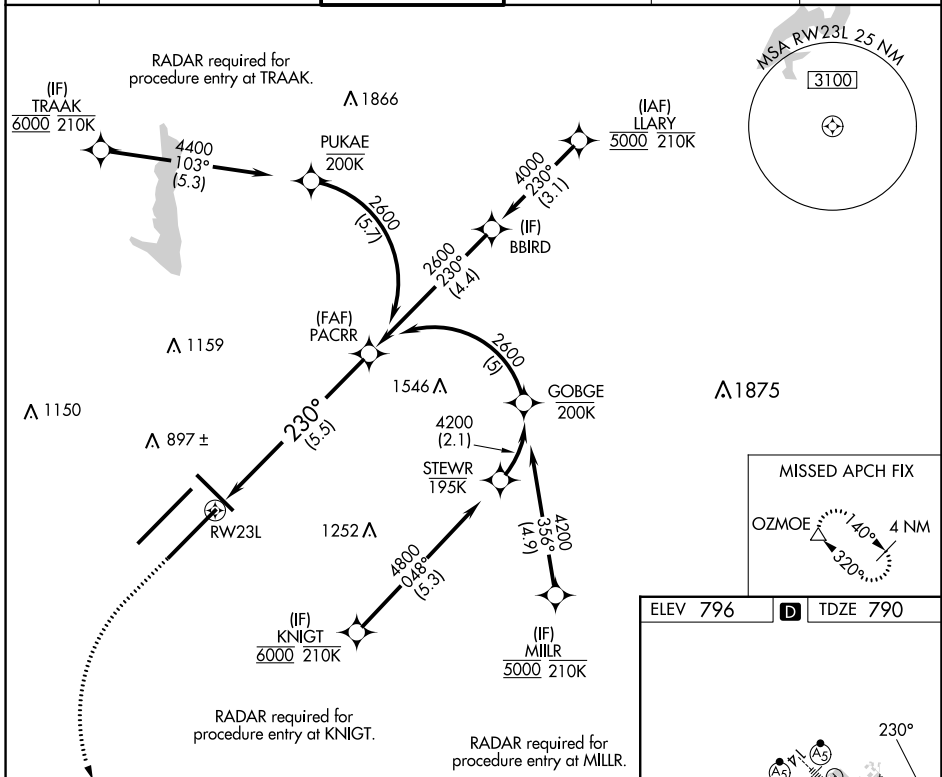
▼ For uncompensated Baro-VNAV systems, procedure NA below -20°C or above 54°C. Simultaneous approach authorized for arrivals from LLRY only.

MALSRL



MISSED APPROACH: Climb to 1500, then climbing left turn to 3000 direct OZMOE and hold.

D-ATIS 134.25	INDIANAPOLIS APP CON 128.175 317.8	INDY TOWER 120.9 257.8	GND CON 121.9	CLNC DEL 128.75 257.8	CPDLC
-------------------------	--	----------------------------------	-------------------------	---------------------------------	-------



ELEV 796 **D** TDZE 790

HIRL all Rwys
TDZ/CL Rwys 5L and 5R

EC-2, 22 FEB 2024 to 21 MAR 2024

EC-2, 22 FEB 2024 to 21 MAR 2024

CATEGORY	A	B	C	D
RNP 0.30 DA	1175/35		385 (400-%)	

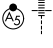
AUTHORIZATION REQUIRED

RNAV (RNP) Z RWY 23R

INDIANAPOLIS INTL (IND)

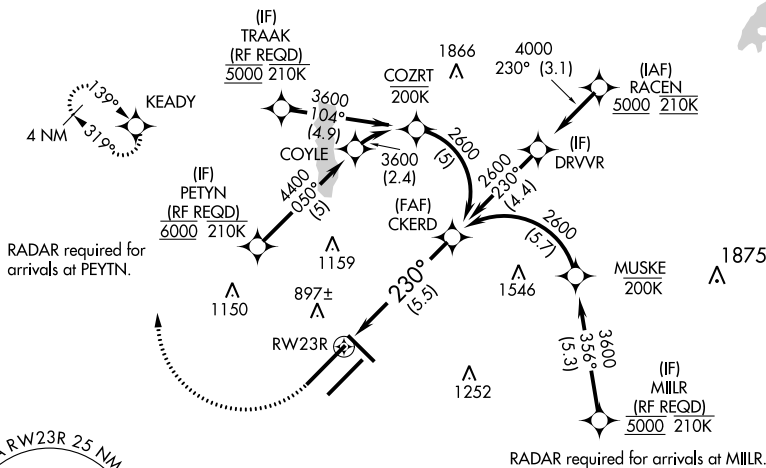
APP CRS 230°	Rwy Idg 11200
	TDZE 783
	Apt Elev 796

▽ For uncompensated Baro-VNAV systems, procedure NA below -18°C (0°F) or above 54°C (130°F). GPS Required. For inoperative ALS, increase RNP 0.15 all Cats visibility to RVR 6000 and increase RNP 0.30 all Cats visibility to 1 3/8 SM. Simultaneous approach authorized.

MALSR

MISSED APPROACH:
 Climb to 1200 then climbing right turn to 3000 direct KEADY and hold.

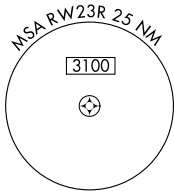
D-ATIS 134,25	INDIANAPOLIS APP CON 128.175 317.8	INDY TOWER 120.9 257.8	GND CON 121.9	CLNC DEL 128.75 257.8	CPDLC
-------------------------	--	----------------------------------	-------------------------	---------------------------------	-------

RADAR required for arrivals at TRAAK.

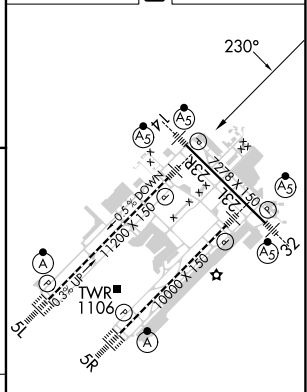
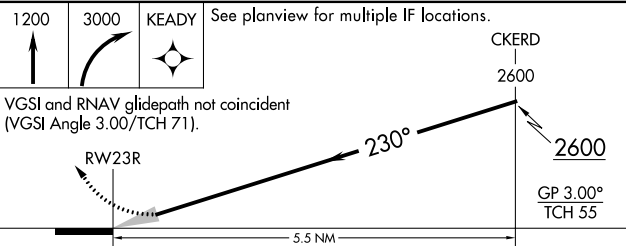


EC-2, 22 FEB 2024 to 21 MAR 2024

EC-2, 22 FEB 2024 to 21 MAR 2024



ELEV 796 **D** TDZE 783



CATEGORY	A	B	C	D
RNP 0.15 DA		1147/40	364 (400-3/4)	
RNP 0.30 DA		1206/50	423 (500-1)	

AUTHORIZATION REQUIRED

HIRL all Rwy's
 TDZ/CL Rwy's 5L and 5R

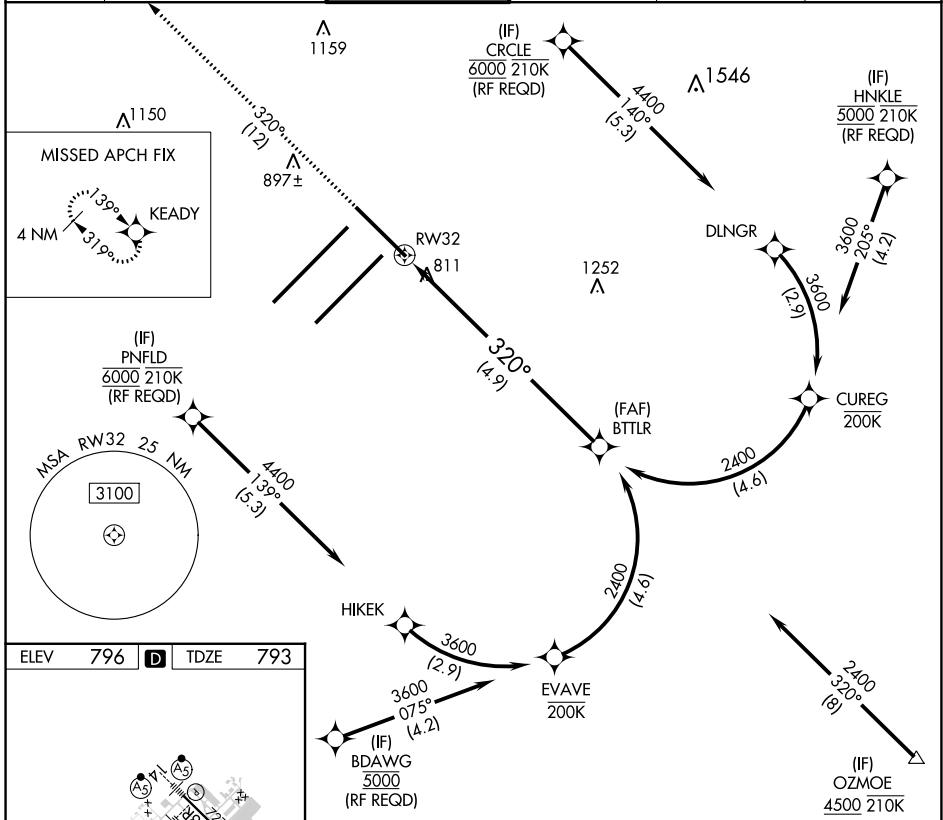
APP CRS 320°	Rwy Idg 7278
	TDZE 793
	Apt Elev 796

RNAV (RNP) Z RWY 32

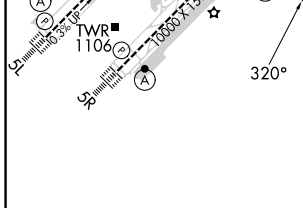
INDIANAPOLIS INTL (IND)

	For uncompensated Baro-VNAV systems, procedure NA below -18°C (2°F) or above 54°C (130°F). GPS required.	MALSR 	MISSED APPROACH: Climb to 3000 on track 320° to KEADY and hold.

D-ATIS 134.25	INDIANAPOLIS APP CON 128.175 317.8	INDY TOWER 120.9 257.8	GND CON 121.9	CLNC DEL 128.75 257.8	CPDLC
-------------------------	--	----------------------------------	-------------------------	---------------------------------	-------



ELEV 796	D	TDZE 793
----------	----------	----------



KEADY 3000
 VGSi and RNAV glidepath not coincident (VGSi Angle 3.00/TCH 73).
 BTTLR 2400
 GP 3.00° TCH 53
 See planview for multiple IF locations.
 4.9 NM

CATEGORY	A	B	C	D
RNP 0.19 DA		1134/30	341 (400- $\frac{5}{8}$)	
RNP 0.30 DA		1196/45	403 (400- $\frac{5}{8}$)	

HIRL all Rwys
 TDZ/CL Rwys 5L and 5R

INDIANAPOLIS, INDIANA
 Amdt 2 10NOV16

39°43'N-86°18'W

INDIANAPOLIS INTL (IND) RNAV (RNP) Z RWY 32

AUTHORIZATION REQUIRED

EC-2, 22 FEB 2024 to 21 MAR 2024

EC-2, 22 FEB 2024 to 21 MAR 2024

APP CRS	Rwy Idg	11200
050°	TDZE	747
	Apt Elev	796

RNAV (RNP) Z RWY 5L

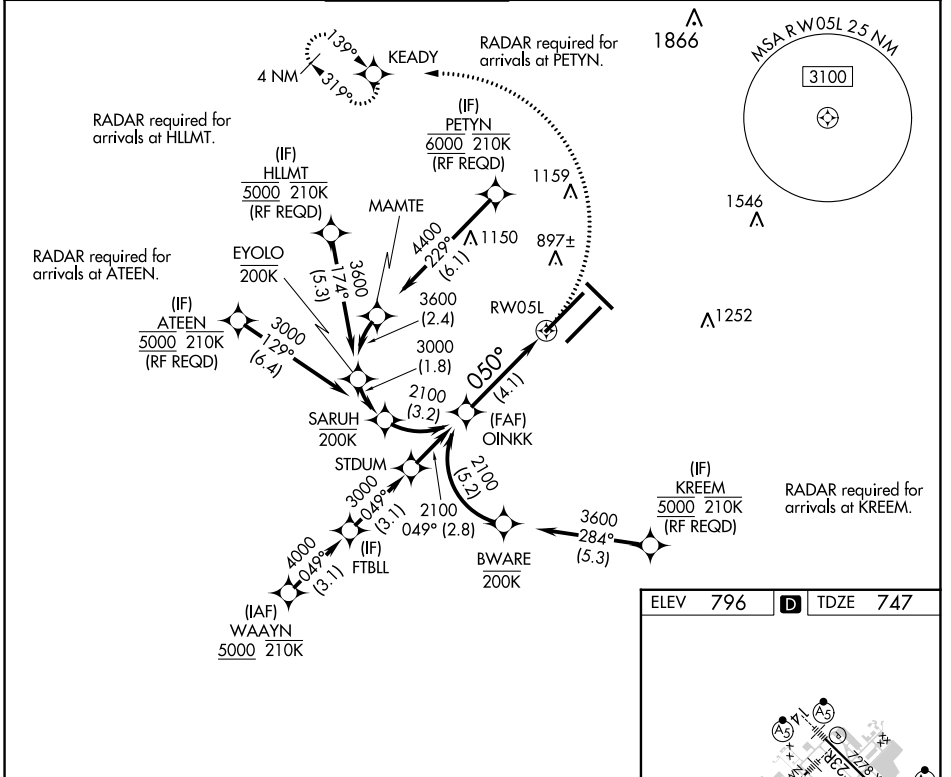
INDIANAPOLIS INTL (IND)

▼ For uncompensated Baro-VNAV systems, procedure NA below -18°C (0°F) or above 54°C (130°F). GPS required. For inop ALS, increase RNP 0.30 all Cats visibility to 1½ SM. Simultaneous approach authorized.

ALSF-2

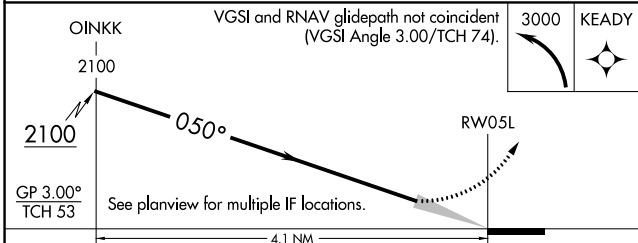
MISSED APPROACH: Climbing left turn to 3000 direct KEADY and hold.

D-ATIS	INDIANAPOLIS APP CON	INDY TOWER	GND CON	CLNC DEL	CPDLC
134.25	128.175 317.8	120.9 257.8	121.9	128.75 257.8	



EC-2, 22 FEB 2024 to 21 MAR 2024

EC-2, 22 FEB 2024 to 21 MAR 2024



ELEV	796	D	TDZE	747
------	-----	---	------	-----

TWR 1106

HIRL all Rwys

TDZ/CL Rwys 5L and 5R

CATEGORY	A	B	C	D
RNP 0.30 DA		1197/60	450 (500-1½)	

AUTHORIZATION REQUIRED

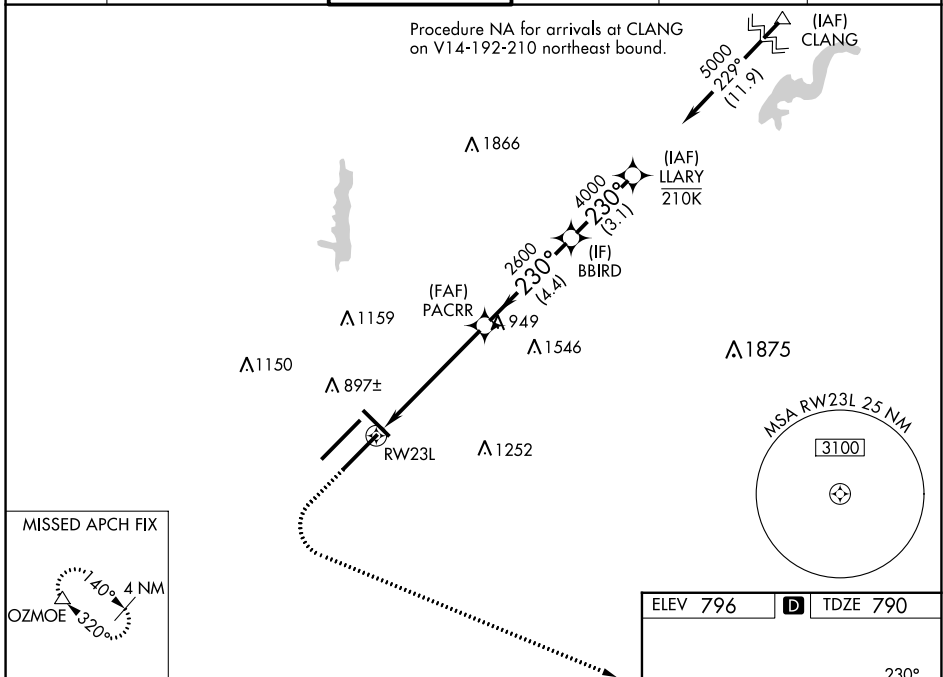
WAAS CH 86406 W23A	APP CRS 230°	Rwy Idg 10000 TDZE 790 Apt Elev 796
--	------------------------	--

RNAV (GPS) Y RWY 23L

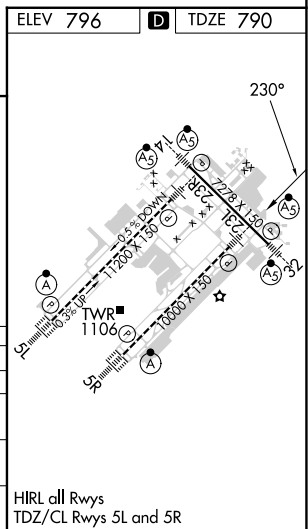
INDIANAPOLIS INTL (IND)

RNP APCH - GPS.	MALSR MISSED APPROACH: Climb to 1500 then climbing left turn to 3000 direct OZMOE and hold.
⚠ LNAV procedure NA during simultaneous operations. Simultaneous approach authorized. ⚠ Use of FD or AP required during simultaneous operations. For uncompensated Baro-VNAV systems, LNAV/VNAV NA below -20°C or above 54°C. For inop ALS, increase LNAV/VNAV all Cats visibility to RVR 4500. * RVR 1800 authorized with use of FD or AP or HUD to DA.	

D-ATIS 134.25	INDIANAPOLIS APP CON 128.175 317.8	INDY TOWER 120.9 257.8	GND CON 121.9	CLNC DEL 128.75 257.8	CPDLC
-------------------------	--	----------------------------------	-------------------------	---------------------------------	-------



MISSED APCH FIX OZMOE 320° (4.0 NM)	1500 3000 OZMOE 	VGSI and RNAV glidepath not coincident (VGSI Angle 3.00/TCH 71).		
 GP 3.00° TCH 55	PACRR 2600 BBIRD 4000 LLARY 5000			
CATEGORY	A	B	C	D
LPV DA*	990/24 200 (200-½)			
LNAV/VNAV DA	1078/24 288 (300-½)			
LNAV MDA	1180/24 390 (400-½)		1180/35 390 (400-¾)	
C CIRCLING	1420-1 624 (700-1)		1420-1¾ 624 (700-1¾) / 1560-2½ 764 (800-2½)	



EC-2, 22 FEB 2024 to 21 MAR 2024

EC-2, 22 FEB 2024 to 21 MAR 2024

WAAS CH 77706 W23B	APP CRS 230°	Rwy Idg 11200 TDZE 783 Apt Elev 796
--	------------------------	--

RNAV (GPS) Y RWY 23R

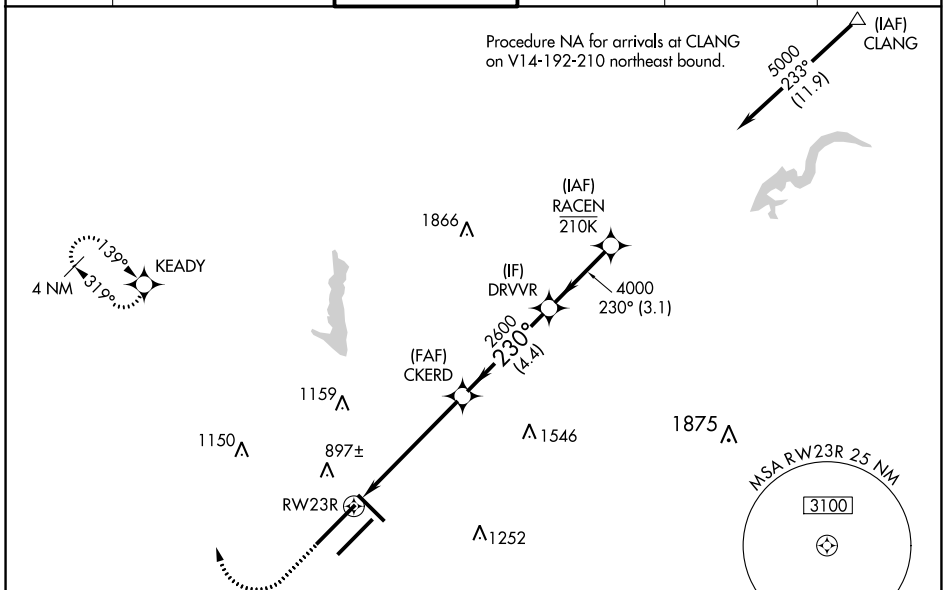
INDIANAPOLIS INTL (IND)

For uncompensated Baro-VNAV systems, LNAV/VNAV NA below -18°C (0°F) or above 54°C (130°F). DME/DME RNP-0.3 NA. For inoperative ALS, increase LNAV Cat C/D visibility to RVR 6000. Simultaneous approach authorized. LNAV procedure NA during simultaneous operations. Use of FD or AP providing RNAV track guidance required during simultaneous operations.
**** RVR 1800 authorized with use of FD or AP or HUD to DA.**



MISSED APPROACH:
Climb to 1500 then climbing right turn to 3000 direct KEADY and hold.

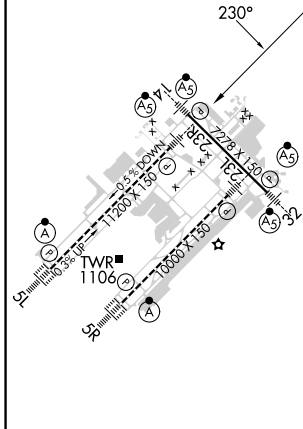
D-ATIS 134.25	INDIANAPOLIS APP CON 128.175 317.8	INDY TOWER 120.9 257.8	GND CON 121.9	CLNC DEL 128.75 257.8	CPDLC
-------------------------	--	----------------------------------	-------------------------	---------------------------------	-------



EC-2, 22 FEB 2024 to 21 MAR 2024

EC-2, 22 FEB 2024 to 21 MAR 2024

ELEV 796	D	TDZE 783
----------	----------	----------



1500	3000	KEADY	VGSI and RNAV glidepath not coincident (VGSI Angle 3.00/TCH 71).
* LNAV only		CKERD	RACEN
* 1.1 NM to RWY 23R		2600	5000
RWY 23R		4000	230°
1.1 NM		4.4 NM	3.1 NM
2600		4000	GP 3.00° TCH 55

CATEGORY	A	B	C	D
LPV DA	** 983/24		200 (200-½)	
LNAV/VNAV DA	1165/40		382 (400-¾)	
LNAV MDA	1200/24	417 (500-½)	1200/40	417 (500-¾)
C CIRCLING	1420-1	624 (700-1)	1420-1¾ 624 (700-1¾)	1560-2½ 764 (800-2½)

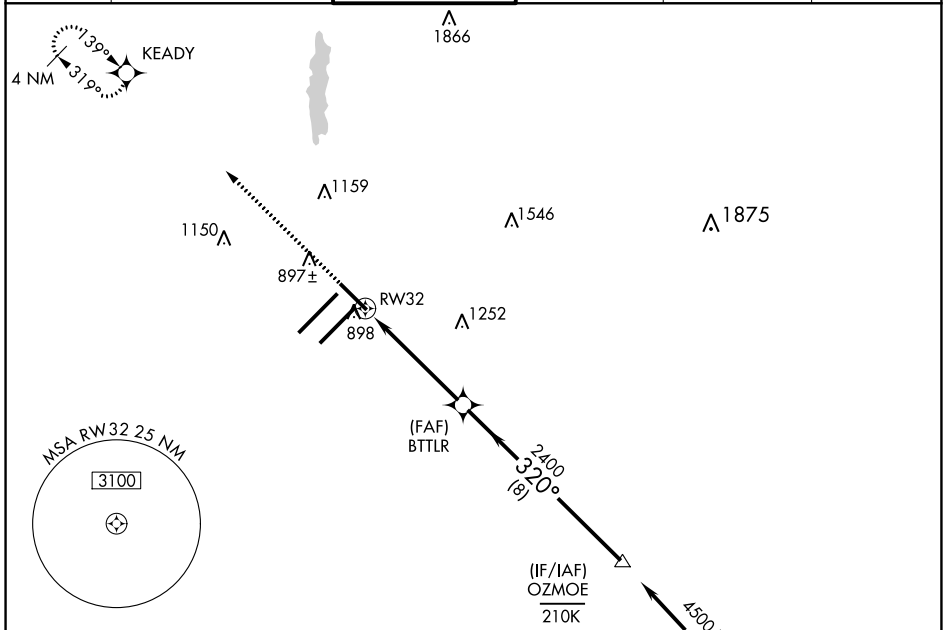
WAAS CH 62802 W32A	APP CRS 320°	Rwy Idg 7278 TDZE 793 Apt Elev 796
--	------------------------	---

RNAV (GPS) Y RWY 32

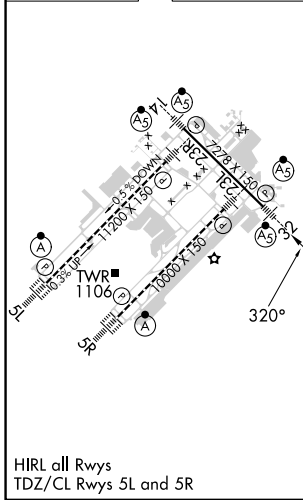
INDIANAPOLIS INTL (IND)

<p>⚠ For uncompensated Baro-VNAV systems, LNAV/VNAV NA below -18°C (0°F) or above 54°C (130°F). ⚠ DME/DME RNP-0.3 NA. **RVR 1800 authorized with use of FD or AP or HUD to DA.</p>	<p>MALSR </p>	<p>MISSED APPROACH: Climb to 3000 direct KEADY and hold.</p>
---	--------------------	--

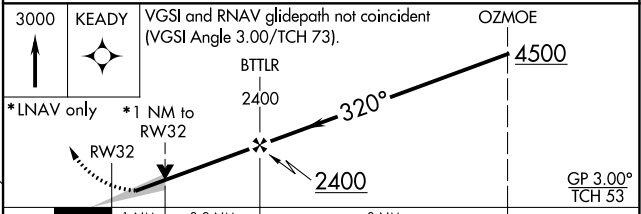
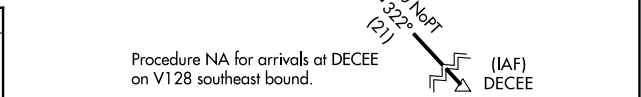
D-ATIS 134.25	INDIANAPOLIS APP CON 128.175 317.8	INDY TOWER 120.9 257.8	GND CON 121.9	CLNC DEL 128.75 257.8	CPDLC
-------------------------	--	----------------------------------	-------------------------	---------------------------------	-------



ELEV 796	D	TDZE 793
----------	----------	----------



INDIANAPOLIS, INDIANA
Amdt 4A 17AUG17



CATEGORY	A	B	C	D
LPV DA	**993/24		200 (200-½)	
LNAV/VNAV DA	1069/24		276 (300-½)	
LNAV MDA	1160/24	367 (400-½)	1160/35	367 (400-¾)
C CIRCLING	1420-1	624 (700-1)	1420-1¾ 624 (700-1¾)	1560-2½ 764 (800-2½)

EC-2, 22 FEB 2024 to 21 MAR 2024

EC-2, 22 FEB 2024 to 21 MAR 2024

WAAS CH 45706 W05A	APP CRS 050°	Rwy Idg 11200 TDZE 747 Apt Elev 796
--	------------------------	--

RNAV (GPS) Y RWY 5L

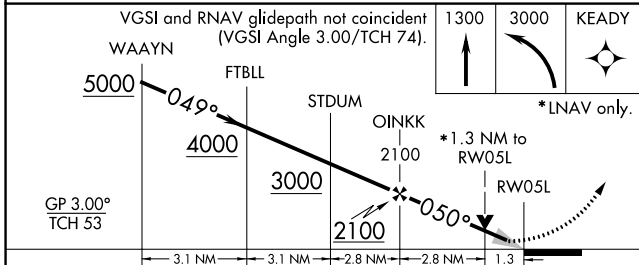
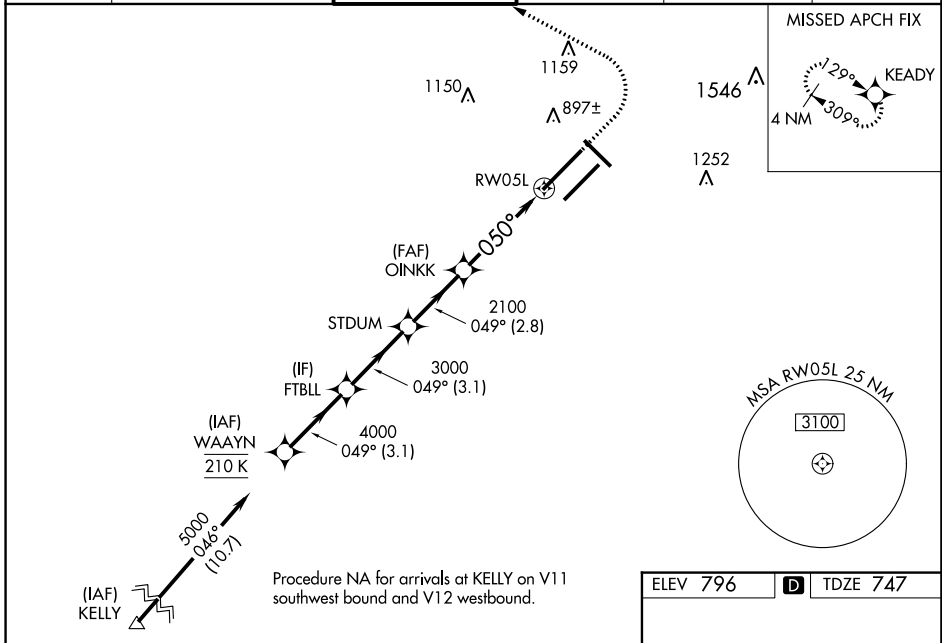
INDIANAPOLIS INTL (IND)

T **A** For uncompensated Baro-VNAV systems, LNAV/VNAV NA below -18°C (0°F) or above 54°C (130°F). DME/DME RNP-0.3 NA. Simultaneous approach authorized. LNAV procedure NA during simultaneous operations. Use of FD or AP providing RNAV track guidance required during simultaneous operations. For inoperative ALS, increase LNAV/VNAV all Cats visibility to 1¼ SM and increase LNAV Cat C/D visibility to 1½ SM.

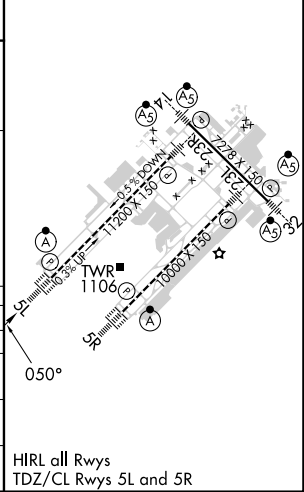
ALS-F-2

MISSED APPROACH: Climb to 1300 then climbing left turn to 3000 direct KEADY and hold.

D-ATIS 134.25	INDIANAPOLIS APP CON 128.175 317.8	INDY TOWER 120.9 257.8	GND CON 121.9	CLNC DEL 128.75 257.8	CPDLC
-------------------------	--	---	-------------------------	---------------------------------	-------



ELEV 796	D TDZE 747
----------	-------------------



CATEGORY	A	B	C	D
LPV DA	947/18		200 (200-½)	
LNAV/VNAV DA	1136/45		389 (400-¾)	
LNAV MDA	1220/24 473 (500-½)		1220/50 473 (500-1)	
C CIRCLING	1420-1 624 (700-1)		1420-1¾ 624 (700-1¾) 1560-2½ 764 (800-2½)	

EC-2, 22 FEB 2024 to 21 MAR 2024

EC-2, 22 FEB 2024 to 21 MAR 2024

WAAS CH 50306 W05B	APP CRS 050°	Rwy Idg 10000 TDZE 791 Apt Elev 796
--	------------------------	--

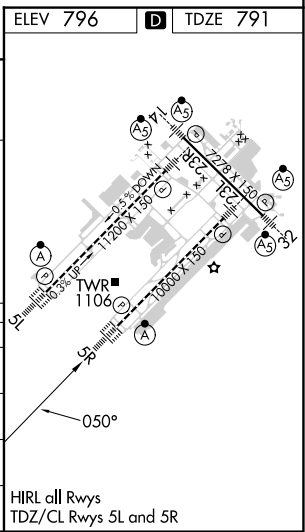
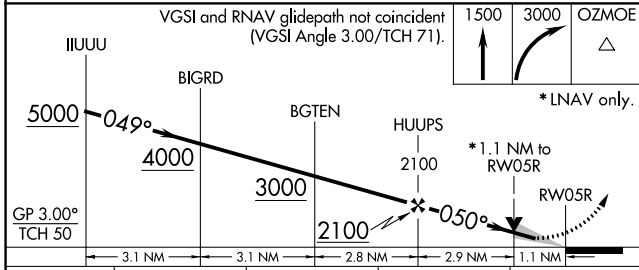
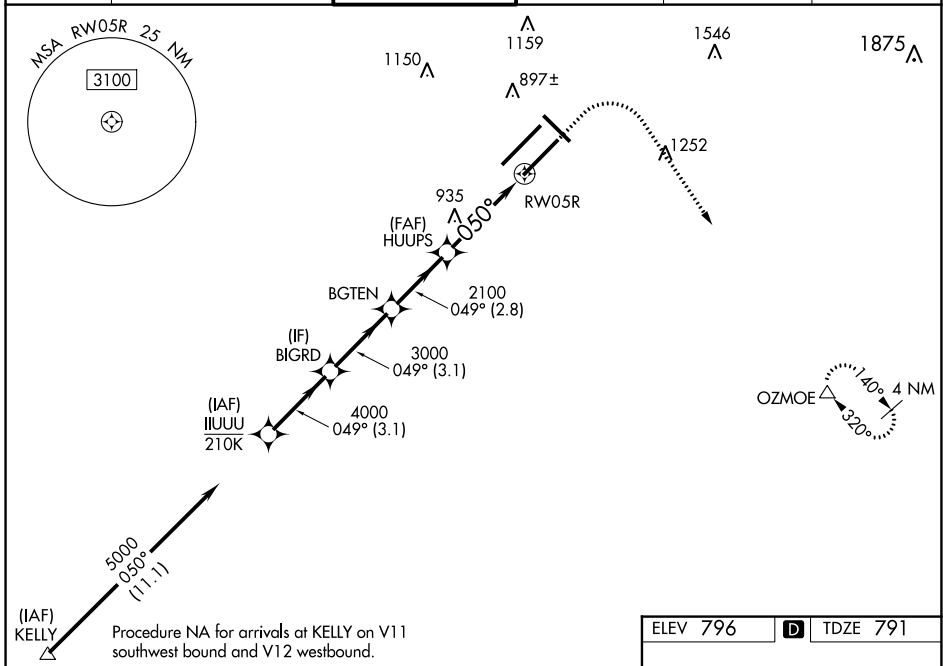
RNAV (GPS) Y RWY 5R

INDIANAPOLIS INTL (IND)

▼ For uncompensated Baro-VNAV systems, LNAV/VNAV NA below -18°C (0°F) or above 54°C (130°F). DME/DME RNP-0.3 NA. Simultaneous approach authorized. LNAV procedure NA during simultaneous operations. Use of FD or AP providing RNAV track guidance required during simultaneous operations.

ALSF-2 MISSED APPROACH: Climb to 1500 then climbing right turn to 3000 direct OZMOE and hold.

D-ATIS 134.25	INDIANAPOLIS APP CON 128.175 317.8	INDY TOWER 120.9 257.8	GND CON 121.9	CLNC DEL 128.75 257.8	CPDLC
-------------------------	--	----------------------------------	-------------------------	---------------------------------	-------



CATEGORY	A	B	C	D
LPV DA		991/18	200 (200-½)	
LNAV/VNAV DA		1172/40	381 (400-¾)	
LNAV MDA	1220/24	429 (500-½)	1220/40	429 (500-¾)
CIRCLING	1420-1	624 (700-1)	1420-1¾ 624 (700-1¾)	1560-2½ 764 (800-2½)

HIRL all Rwys
TDZ/CL Rws 5L and 5R

EC-2, 22 FEB 2024 to 21 MAR 2024

EC-2, 22 FEB 2024 to 21 MAR 2024